



Floatable Materials Monitoring and Collection City of Pasadena Phase I MS4 Permit Requirements and Current Activities



Rick Masters, CPESC, CPSWQ, MTA
Senior Environmental Scientist

LJA Engineering, Inc. 
AN EMPLOYEE-OWNED
COMPANY

3120 Fannin Street
Beaumont, TX 77701
Office: (409) 554-8985
Cell: (409) 893-1493
Fax: (409) 833-0317
Email: rmasters@ljaengineering.com



Floatable Materials Monitoring and Collection City of Pasadena Phase I MS4 Permit Requirements and Current Activities







TEXAS COMMISSION
ON ENVIRONMENTAL QUALITY
P. O. Box 13087
Austin, Texas 78711-3087

TPDES PERMIT NO.
WQ0004524000
[For TCEQ office use only - EPA
I.D. No. TXS001701]

This is a renewal of TPDES
Permit No. WQ0004524000
issued on February 23, 2006.

PERMIT TO DISCHARGE UNDER THE TEXAS
POLLUTANT DISCHARGE ELIMINATION SYSTEM
under provisions of
Section 402 of the Clean Water Act
and Chapter 26 of the Texas Water Code

PART I: AUTHORIZATION

City of Pasadena
P.O. Box 672
Pasadena, Texas 77501

is authorized to discharge from to discharge from the City of Pasadena Municipal Separate Storm
Sewer System (MS4) (SIC 911)

including all areas, except for any agricultural lands, located within the corporate boundary of the City
of Pasadena served by, or otherwise contributing to discharges to the MS4 owned or operated by the
permittee, located in Harris County, Texas, 77501, 77502, 77503, 77504, 77505, and 77506

via the MS4 to various ditches and tributaries that eventually reach the Houston Ship Channel Tidal,
Houston Ship Channel/Buffalo Bayou Tidal, Armand Bayou, and Upper Galveston Bay, in Segment
Nos. 1006 and 1007 of the San Jacinto River Basin, Segment No. 1113 of the San Jacinto-Brazos
Coastal River Basin, and Segment No. 2421 of the Bays and Estuaries

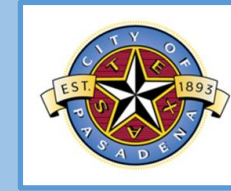
only according to conditions set forth in this permit, as well as the rules of the Texas Commission on
Environmental Quality (TCEQ), the laws of the State of Texas, and other orders of the TCEQ. The
issuance of this permit does not grant to the permittee the right to use private or public property for
conveyance of storm water and certain non storm water discharges along the discharge route
described in this permit. This includes, but is not limited to, property belonging to any individual,
partnership, corporation or other entity. Neither does this permit authorize any invasion of personal
rights nor any violation of federal, state, or local laws or regulations. It is the responsibility of the
permittee to acquire property rights as may be necessary to use the discharge route.

This permit shall expire at midnight, five (5) years from the date of issuance.

ISSUED DATE: October 18, 2011

Max V. Udey
For the Commission

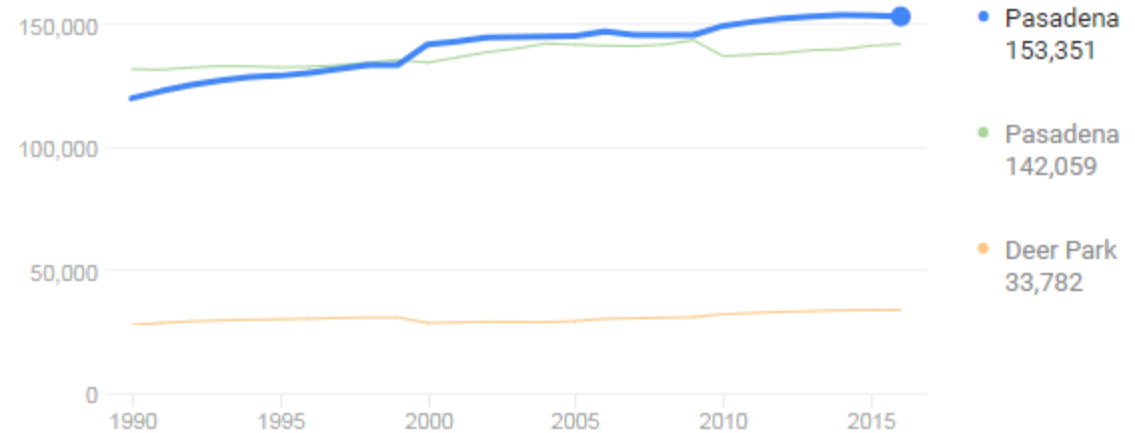
City of Pasadena, Texas:



- Phase I MS4 Permittee
- Discharges Stormwater To Armand Bayou and the Houston Ship Channel – both waterways end up in Galveston Bay.

Pasadena / Population

153,351 (2016)





Floatable Materials Monitoring and Collection City of Pasadena Phase I MS4 Permit Requirements and Current Activities

City of Pasadena

TPDES Permit No. WQ0004524000

B. SWMP Components

The SWMP must contain the following minimum control measures (MCMs) for:

1. **MS4 Maintenance Activities:**
 - a. *Structural Controls:* To the maximum extent practicable (MEP), the permittee shall operate and maintain the MS4, including any storm water structural controls in such a manner as to reduce erosion and the discharge of pollutants.
 - b. *Floatables:* The permittee shall implement a program to reduce the discharge of floatables (for example, litter and other human generated solid refuse) into the MS4. This program element must include source controls at a minimum, and structural controls and other appropriate controls where necessary.
 - c. *Roadways:* The permittee shall operate and maintain public streets, roads, and highways in a manner that minimizes the discharge of pollutants, including those pollutants related to deicing or sanding activities.



Floatable Materials Monitoring and Collection City of Pasadena Phase I MS4 Permit Requirements and Current Activities

B. Floatables Monitoring

The permittee shall maintain two monitoring locations for removal of floatable material in discharges to or from the MS4. Floatable material shall be collected at the frequency necessary for maintenance of the removal devices, but not less than twice per year. The amount of material collected shall be estimated by weight, volume, or by other practical means. Results must be included in the Annual Report required in this permit.



Floatable Materials Monitoring and Collection

City of Pasadena Phase I MS4 Permit Requirements and Current Activities

5.0 Floatables Monitoring

The City maintain 5 dedicated floatables monitoring locations as per the requirements set out in Part IV of the MS4 permit in order to estimate the discharge of floatable materials from the MS4. Floatable Capture Gates are utilized to collect floatables at the monitoring locations. The floatable monitoring locations are cleaned at least 2 times per year and as needed according to the schedule outlined in the MS4 permit.

Measureable Goals:

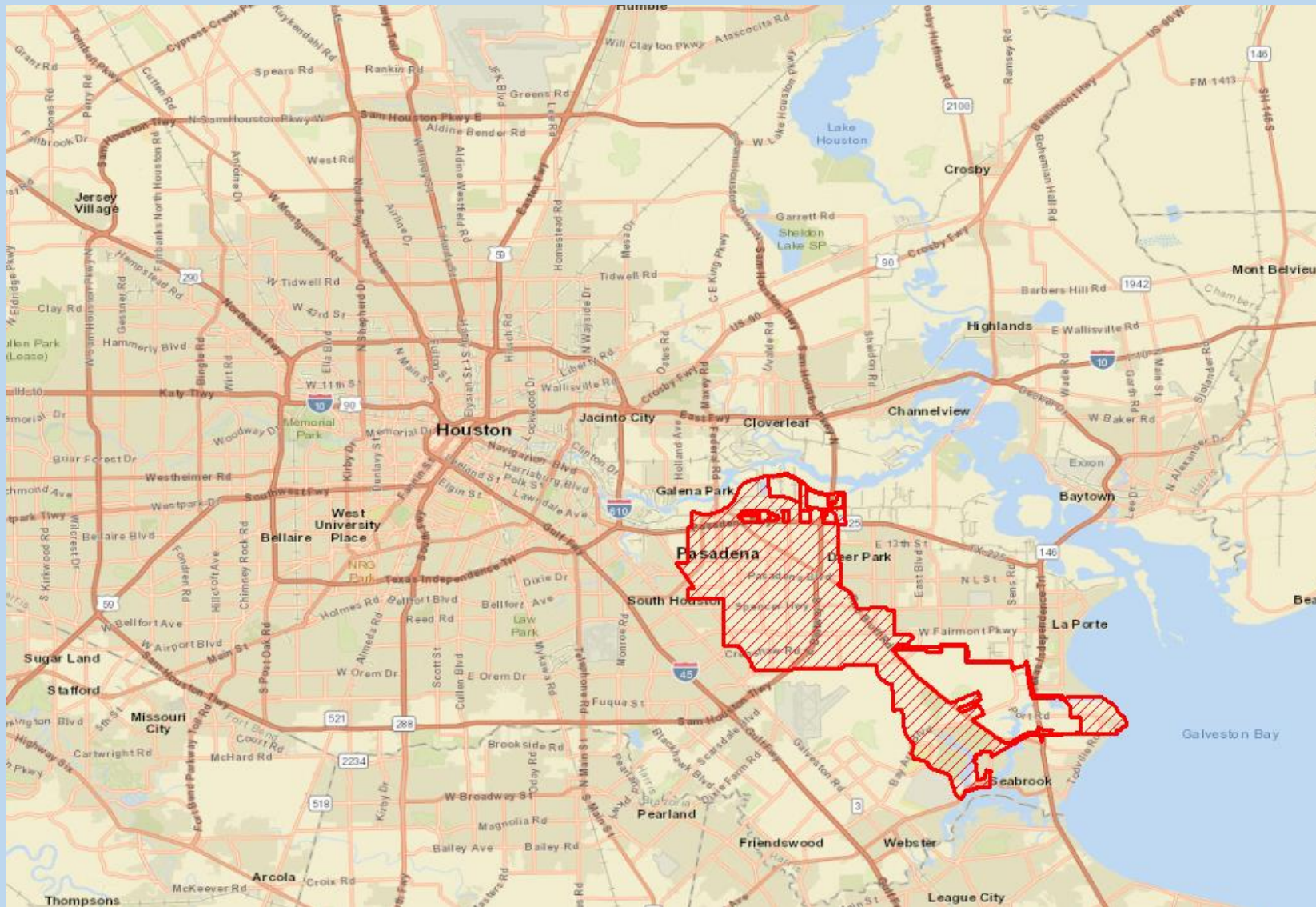
Goal	Status	Permit Year
Collect floatable materials as required by the permit at 2 monitoring locations 2 times per year.	Goal Met	1 - 5

Annual Report Data Tracking Metrics:

Metric	Report Data	City Department
Number of Maintenance Events at Floatable Monitoring Locations	9	Storm Water Team
Estimated Volume of Floatable Materials Collected	19.5 Cubic Yards	Storm Water Team



Floatable Materials Monitoring and Collection City of Pasadena Phase I MS4 Permit Requirements and Current Activities

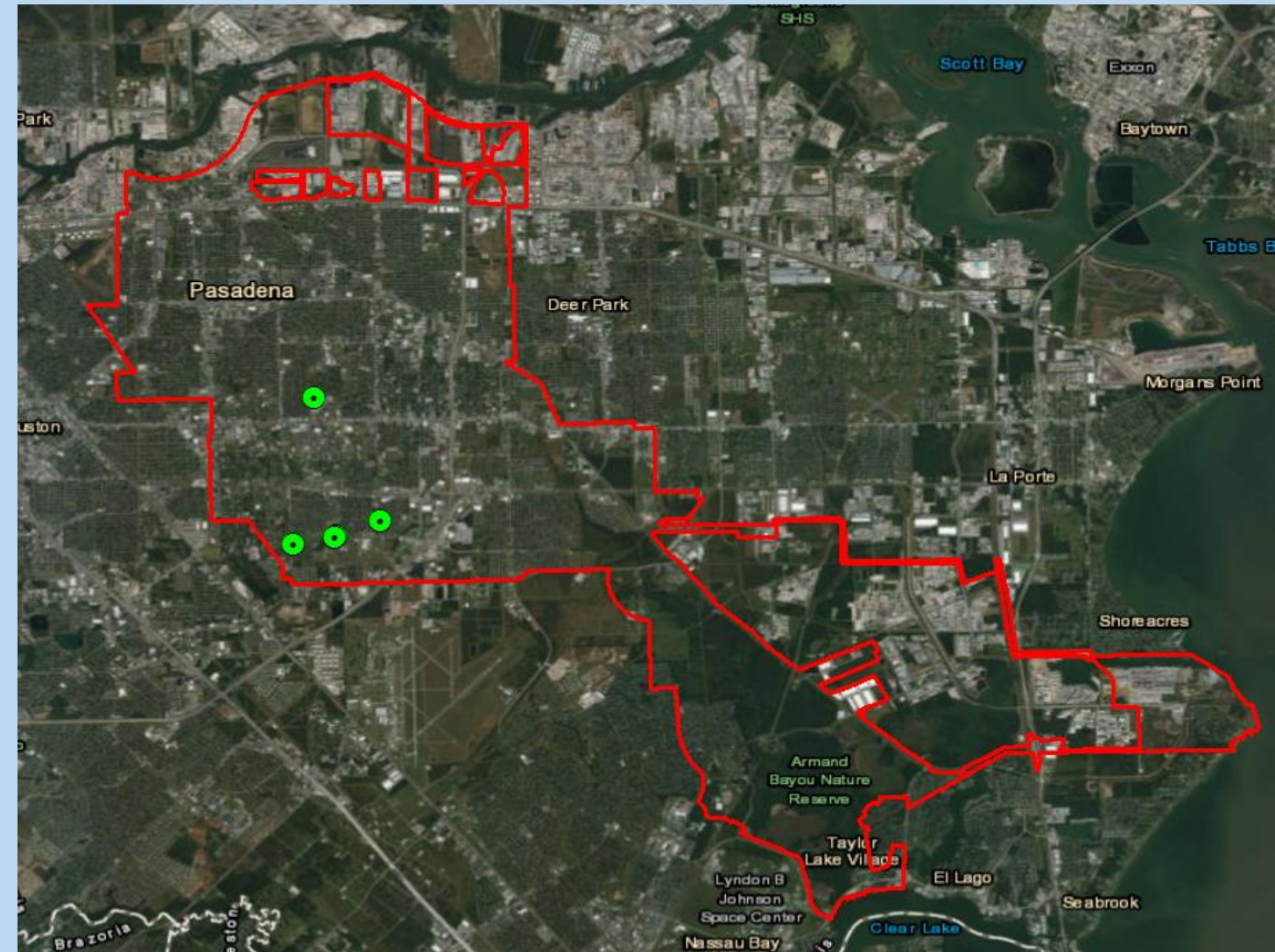




Floatable Materials Monitoring and Collection City of Pasadena Phase I MS4 Permit Requirements and Current Activities

5 Floatable Monitoring Locations

- #1 & #2 Capture Gates at Burke @ Crenshaw
- #3 Stadium
- #4 Preston @ Yellowstone
- #5 Strawberry @ Crenshaw



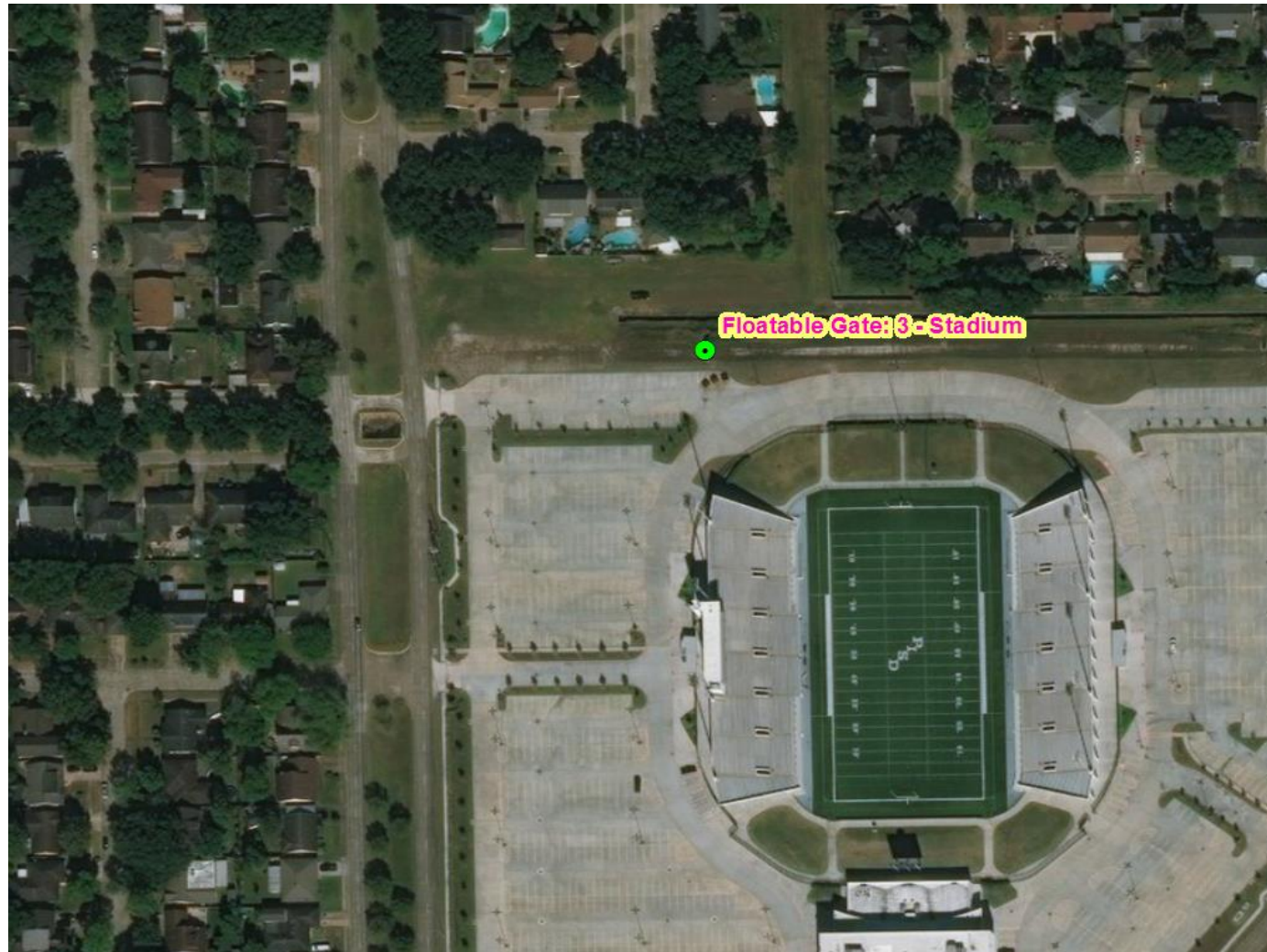


Floatable Materials Monitoring and Collection City of Pasadena Phase I MS4 Permit Requirements and Current Activities



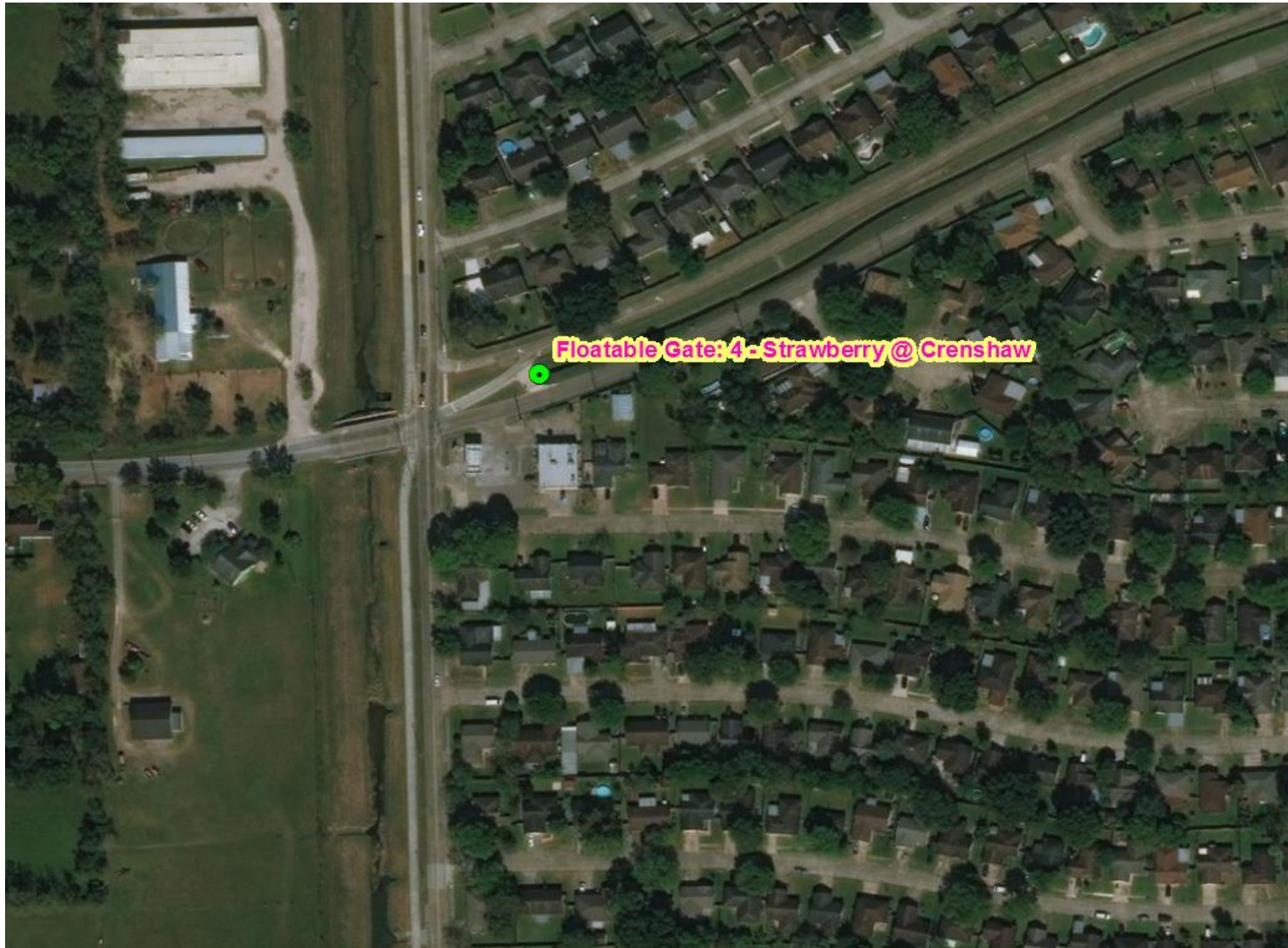


Floatable Materials Monitoring and Collection City of Pasadena Phase I MS4 Permit Requirements and Current Activities



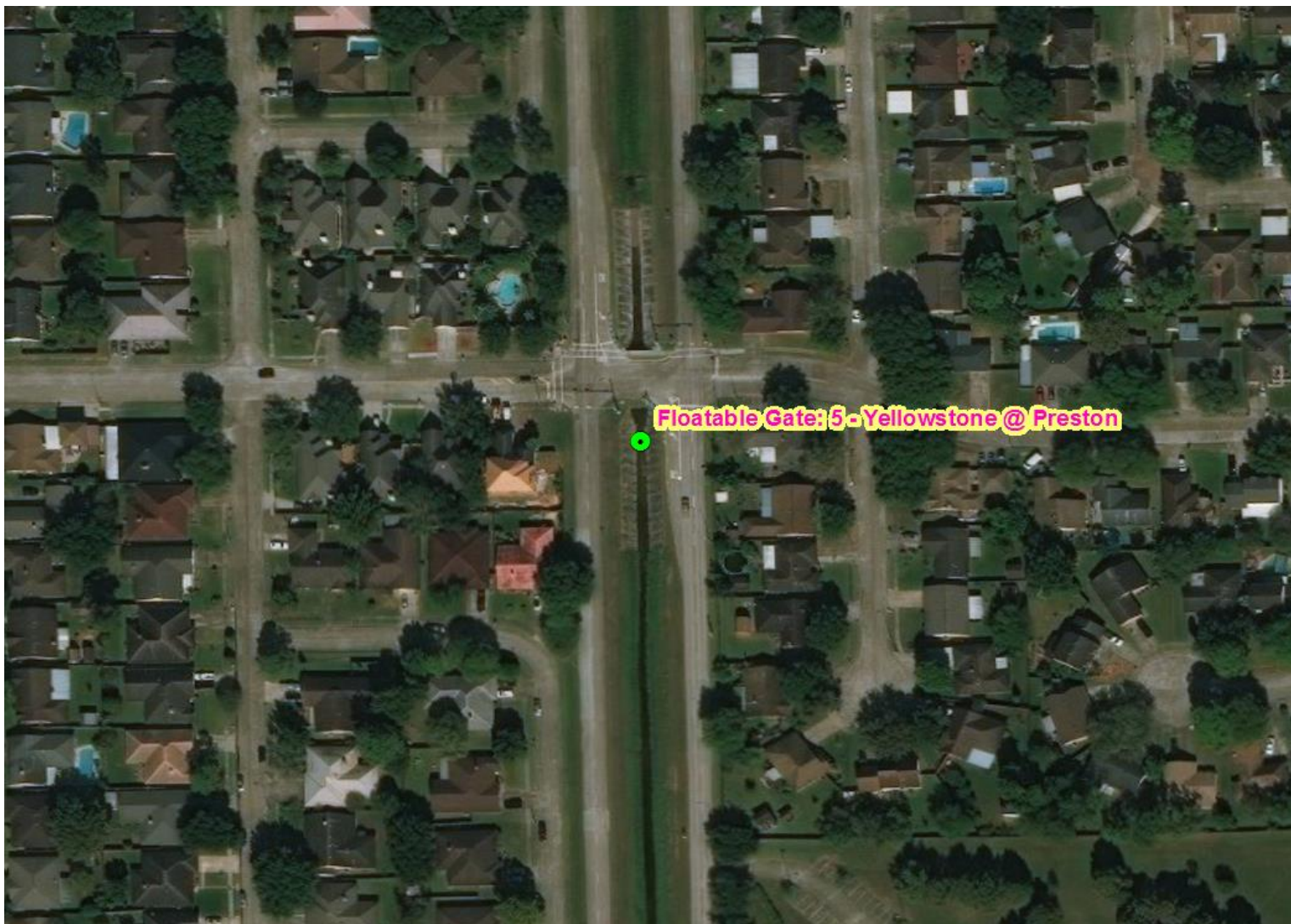


Floatable Materials Monitoring and Collection City of Pasadena Phase I MS4 Permit Requirements and Current Activities





Floatable Materials Monitoring and Collection City of Pasadena Phase I MS4 Permit Requirements and Current Activities



Floatable Gate: 5 - Yellowstone @ Preston



Floatable Materials Monitoring and Collection City of Pasadena Phase I MS4 Permit Requirements and Current Activities

The systems...

Gate-or© Floatable Capture Gates

Built, Designed and Provided by

WaterWay CleanUp Services

Perry Panousis

waterwaycleanup@gmail.com

PH# 832.588.8097





Floatable Materials Monitoring and Collection City of Pasadena Phase I MS4 Permit Requirements and Current Activities





Floatable Materials Monitoring and Collection City of Pasadena Phase I MS4 Permit Requirements and Current Activities





Floatable Materials Monitoring and Collection City of Pasadena Phase I MS4 Permit Requirements and Current Activities





Floatable Materials Monitoring and Collection City of Pasadena Phase I MS4 Permit Requirements and Current Activities





Floatable Materials Monitoring and Collection City of Pasadena Phase I MS4 Permit Requirements and Current Activities





Got Floatables?

Rick Masters, CPESC, CPSWQ, MTA
Senior Environmental Scientist

LJA Engineering, Inc. 
AN EMPLOYEE-OWNED
COMPANY

3120 Fannin Street

Beaumont, TX 77701

Office: (409) 554-8985

Cell: (409) 893-1493

Fax: (409) 833-0317

Email: rmasters@ljaengineering.com