



Partnership and Urban Conservation in the Houston Region

March 14, 2017

Bayou Land Conservancy permanently protects wetlands and other ecologically valuable habitat through partnerships with willing landowners. We preserve land for wildlife habitat, flood mitigation, and enhanced water quality. Our programs connect the public to nature through recreation, education, and stewardship.



[DONATE NOW](#)

[BECOME A MEMBER](#)

[JOIN OUR MAILING LIST](#)

[home](#)

[about us](#)

[preserves](#)

[events](#)

[education](#)

[spring creek greenway](#)

[deer park prairie](#)

[contact us](#)

Community Supported 501 c(3) Non-profit

Vision:

Preserving Greater Houston's natural spaces for wildlife and people

Bayou Land Conservancy permanently protects wetlands and other ecologically valuable habitat through partnerships with willing landowners. We preserve land for wildlife habitat, flood mitigation, and enhanced water quality. Our programs connect the public to nature through recreation, education, and stewardship.



[DONATE NOW](#)

[BECOME A MEMBER](#)

[JOIN OUR MAILING LIST](#)

[home](#)

[about us](#)

[preserves](#)

[events](#)

[education](#)

[spring creek greenway](#)

[deer park prairie](#)

[contact us](#)

Community Supported 501 c(3) Non-profit

Mission:

Bayou Land Conservancy permanently protects wetlands and other ecologically valuable habitat through partnerships with willing landowners. We preserve land for wildlife habitat, flood mitigation, and enhanced water quality. Our programs connect the public to nature through recreation, education, and stewardship.

A photograph of a forest with large, mature trees and a fallen log on the ground. The scene is captured in a natural, slightly overcast light. The text is overlaid on the image.

What is a land trust?

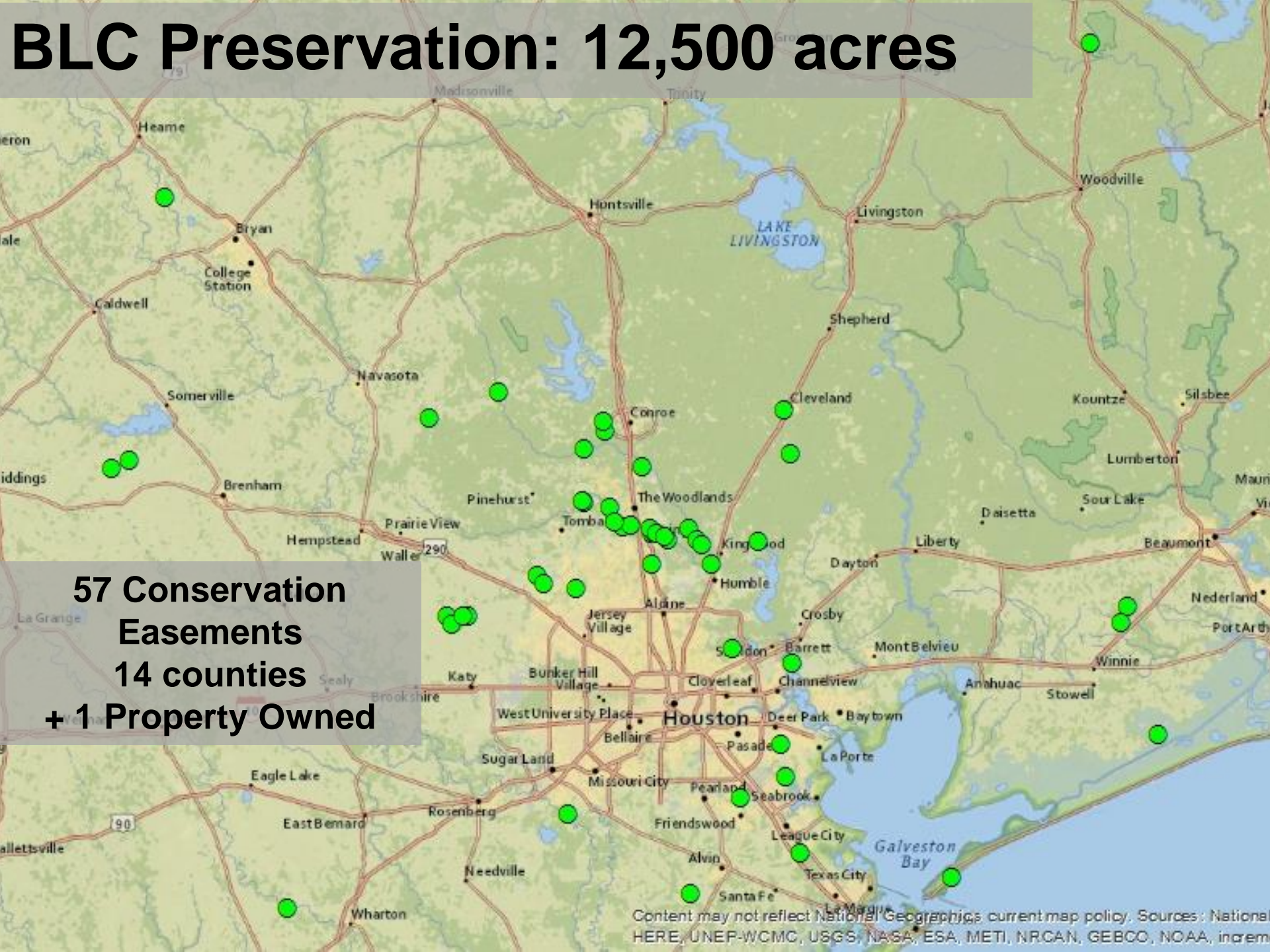
Their mission is to preserve land
via conservation easements
and/or acquisition.



What is a land trust?

There are 30 land trusts in Texas that hold conservation easements and 1,100 land trusts in the U.S.

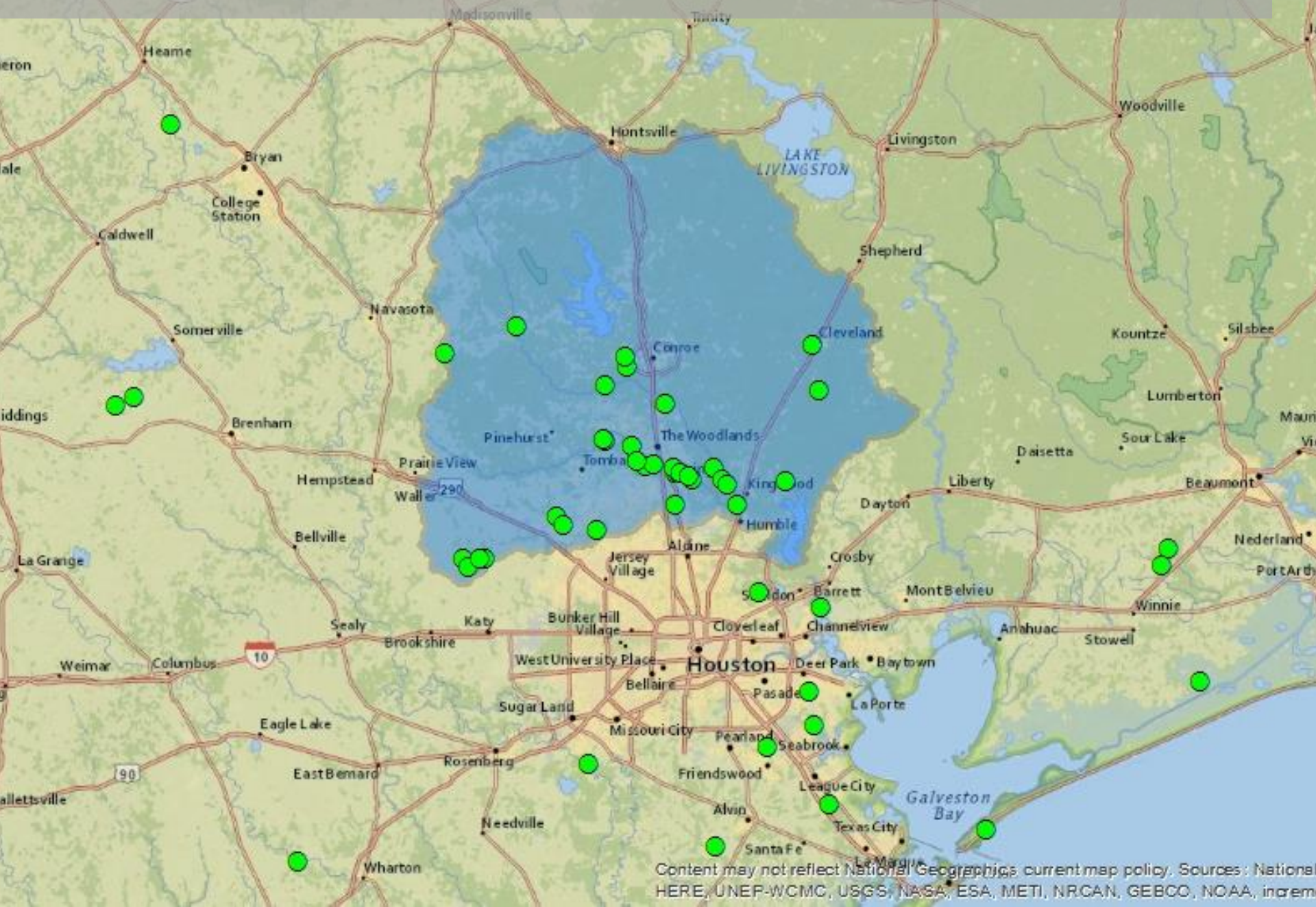
BLC Preservation: 12,500 acres



57 Conservation Easements
14 counties
+ 1 Property Owned

Content may not reflect National Geographic's current map policy. Sources: National Geographic, HERE, UNEP-WCMC, USGS, NASA, ESA, METI, NRCAN, GEBCO, NOAA, incremental

Focus Area: Lake Houston Watershed



Content may not reflect National Geographic's current map policy. Sources: National Geographic, HERE, UNEP-WCMC, USGS, NASA, ESA, METI, NRCAN, GEBCO, NOAA, increment

What is a Conservation Easement?

- Voluntary legal agreement between a landowner and conservation organization that places restrictions on specified future uses.
- Land ownership carries with it a bundle of rights—the right to occupy, lease, sell, or develop.
- A landowner can give up one or more of those rights for a purpose such as conservation while retaining ownership of the remainder of the rights.
- Land Trust holds the defined RIGHTS, often termed DEVELOPMENT RIGHTS

What is a Conservation Easement?

A conservation easement must achieve at least one of the following conservation purposes

- Public recreation or education
- Protects natural habitat
- Scenic enjoyment
- Historically important land

Must be made in perpetuity

Variety of Conservation Easements

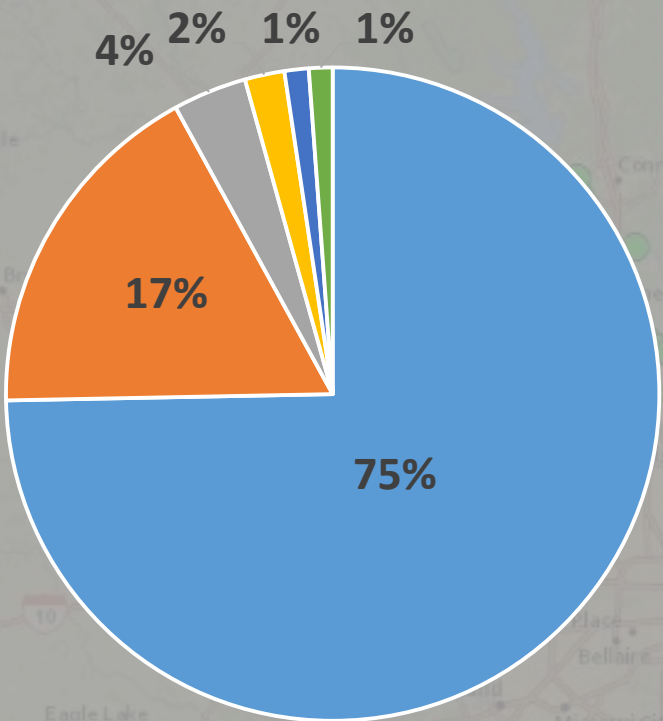
Types of Conservation Easements BLC holds:

- Private land conservation
- Public park space
- Wetlands preservation and conservation

From five to 2,000 acres

Coastal flats to prairies to wooded riparian habitat

Conservation Easements by Acreage

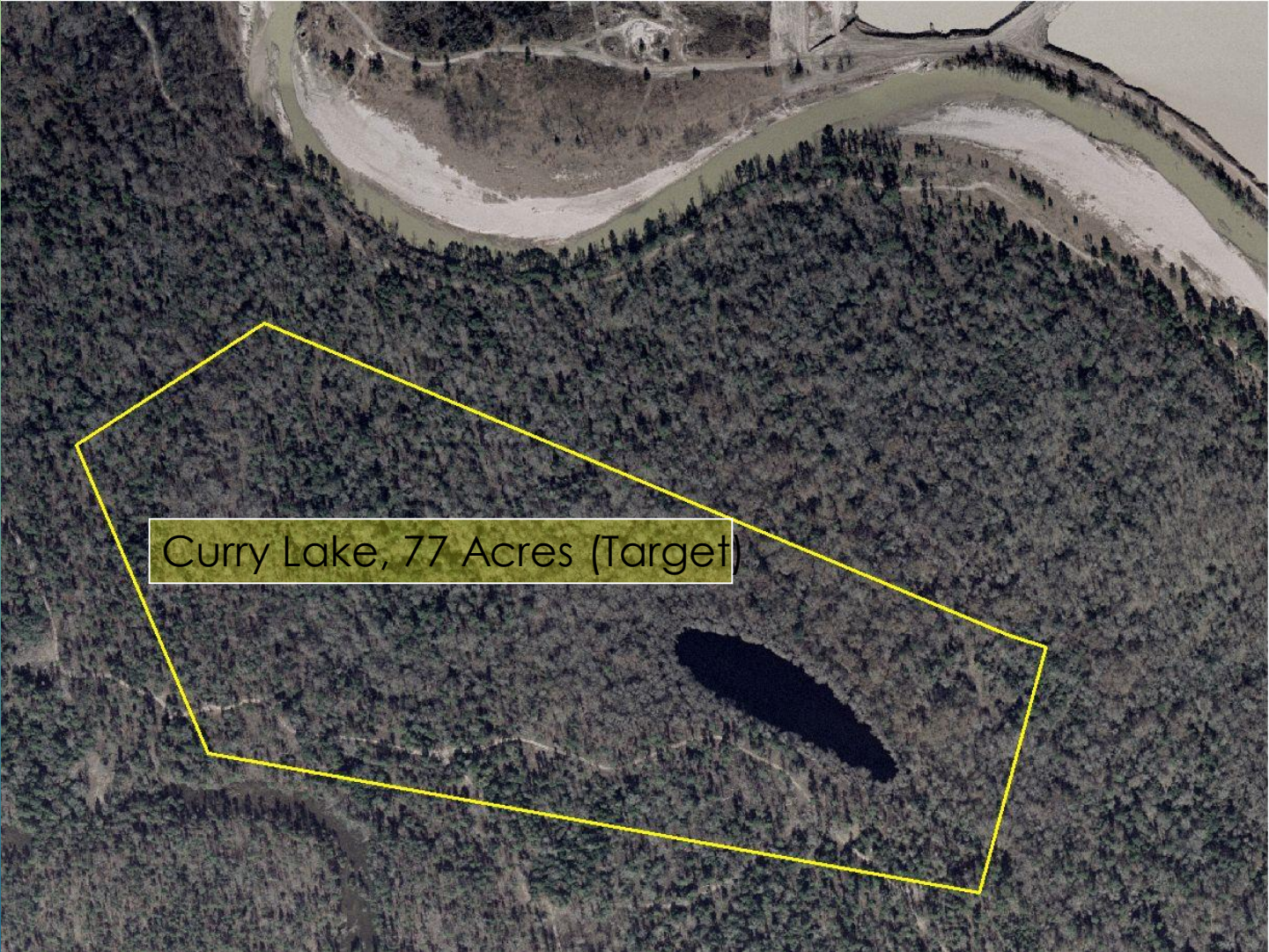


- Wetland Mitigation Total
- Private Landowner Total
- In Lieu Fee and/or SEP Total
- Superfund Total
- Purchase Total
- Donation Total

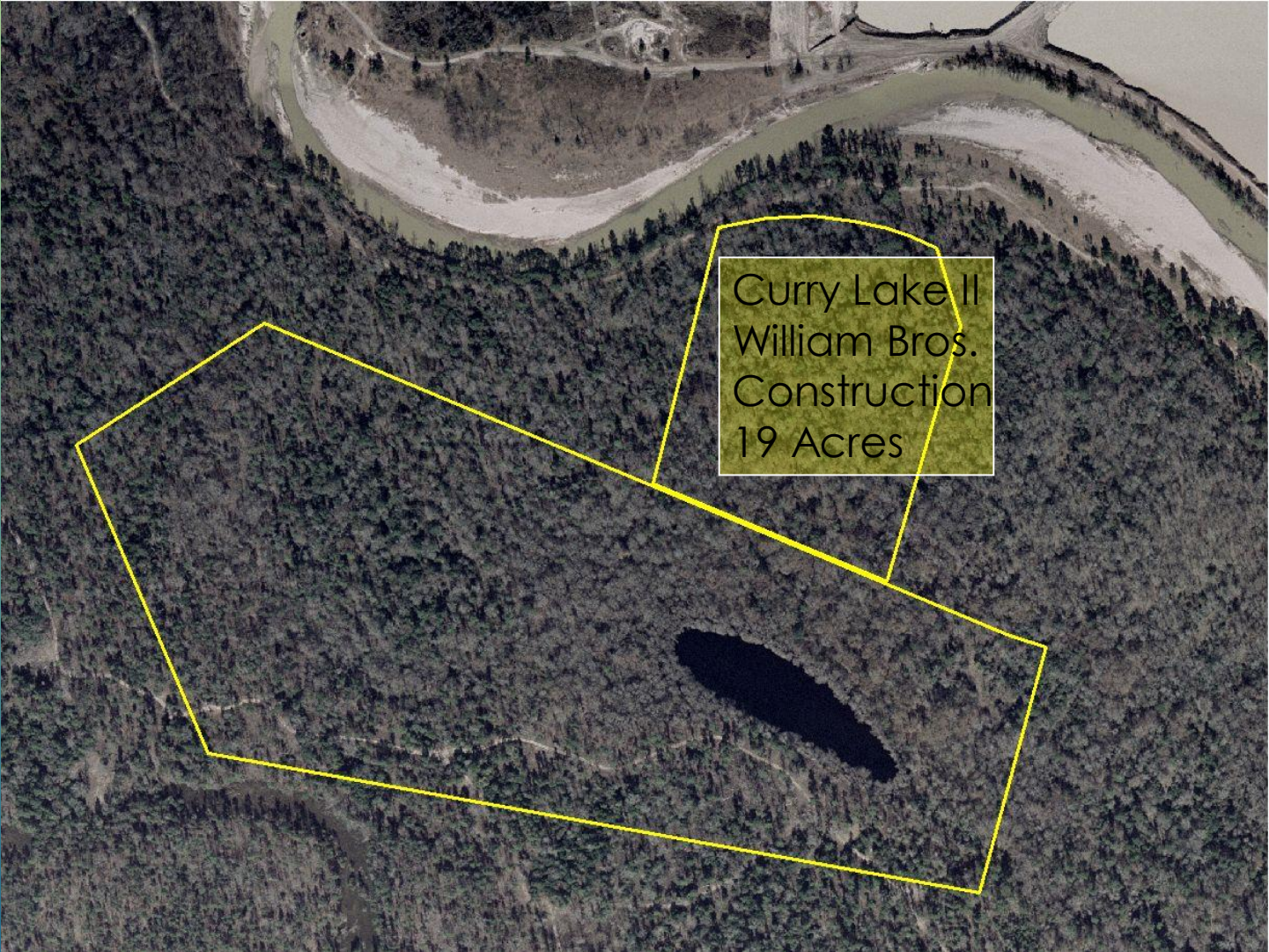
Benefits of Conservation Easements

- Increase stormwater absorption capacity (flood mitigation)
- Enhance water quality
- Permanent land preservation
- Tax benefits



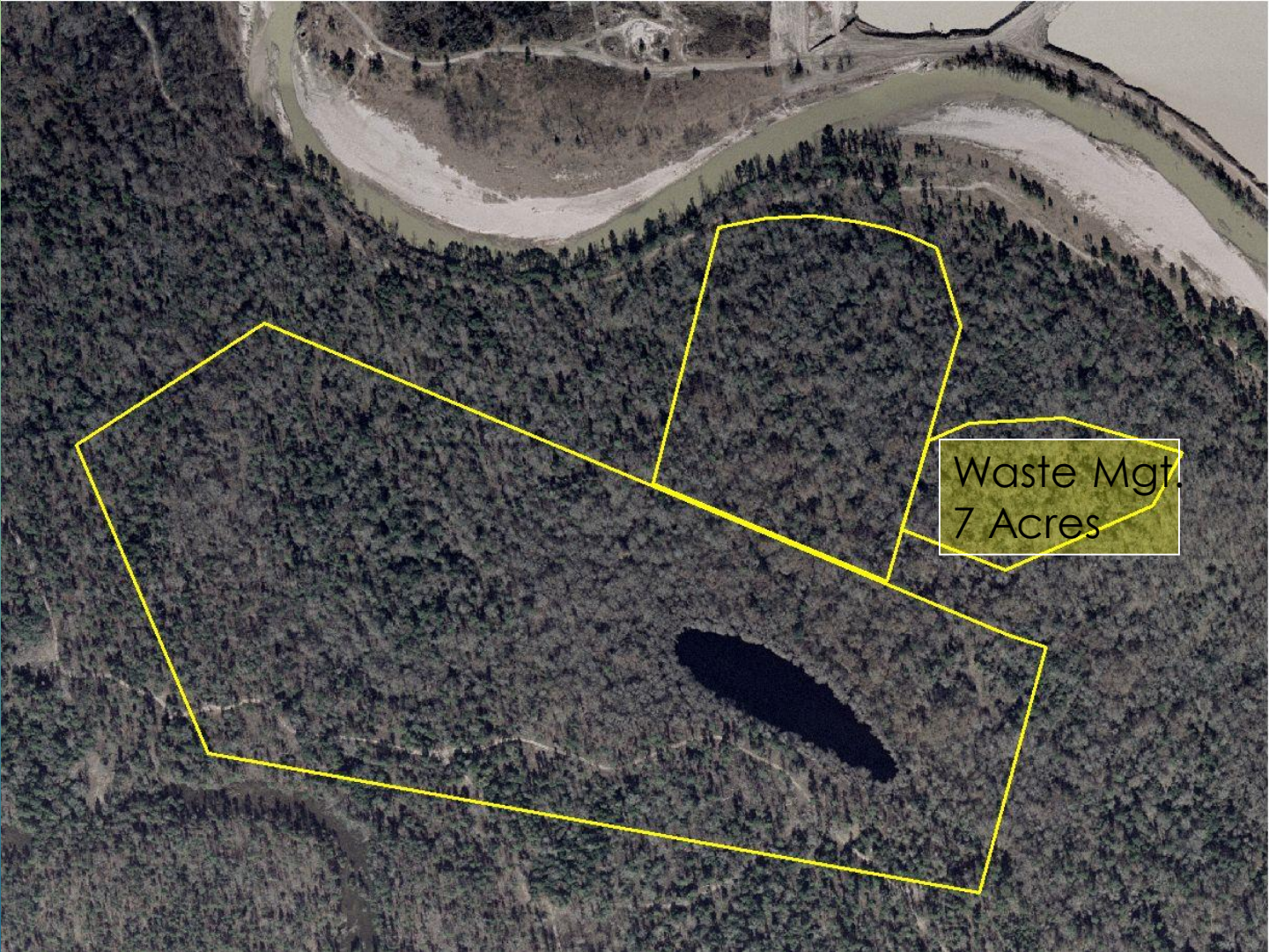


Curry Lake, 77 Acres (Target)

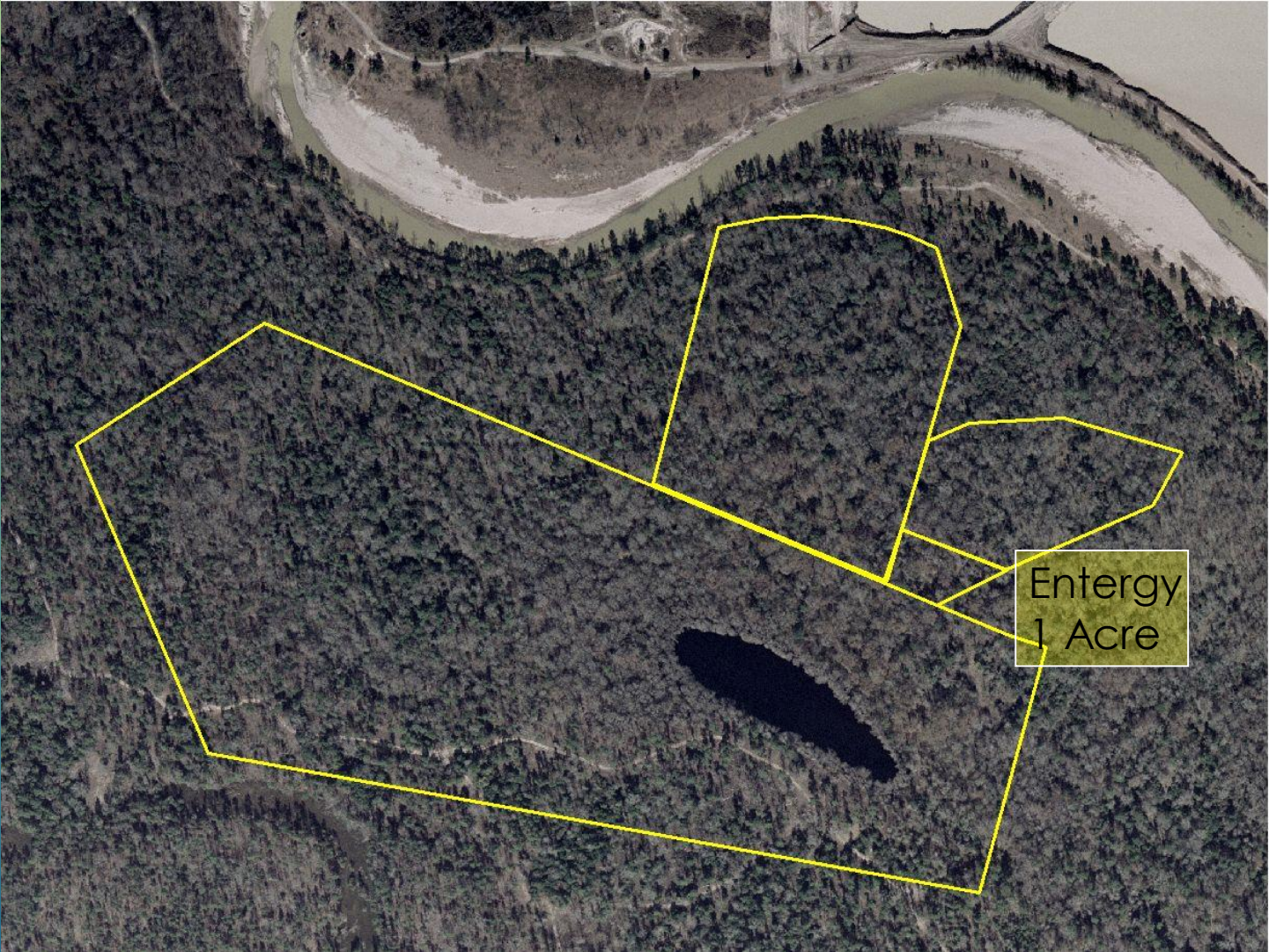


Curry Lake II
William Bros.
Construction
19 Acres

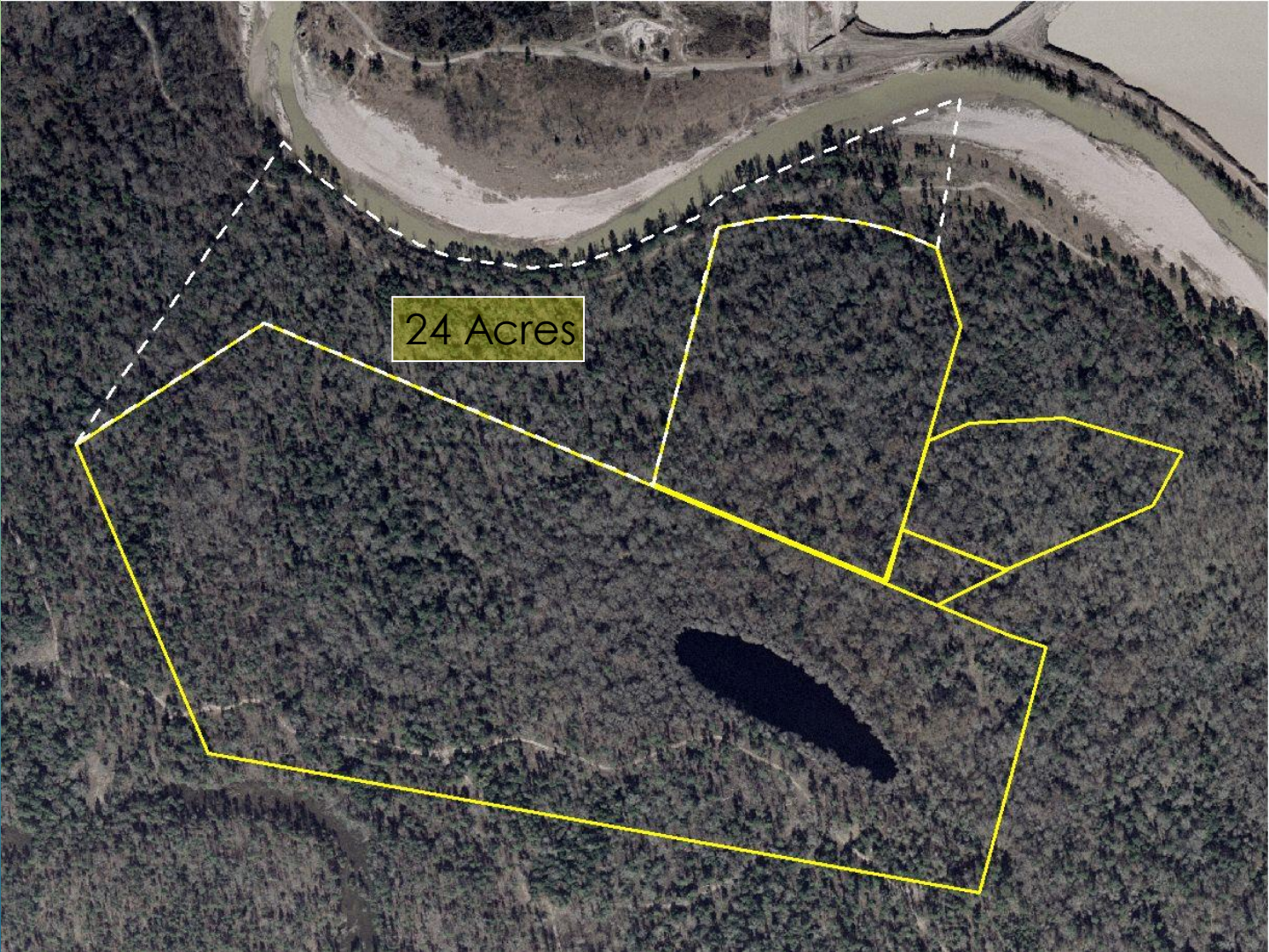




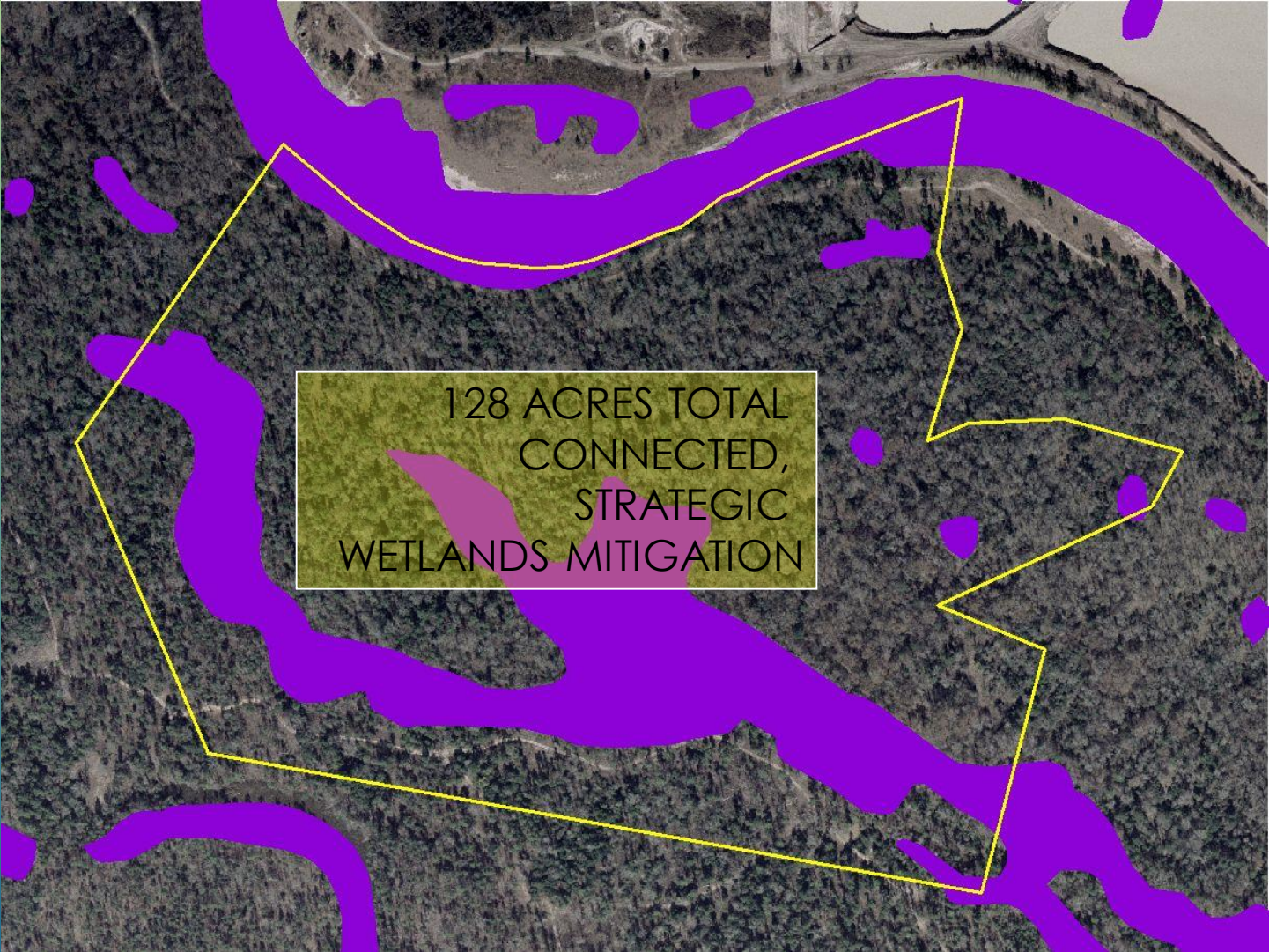
Waste Mgt.
7 Acres



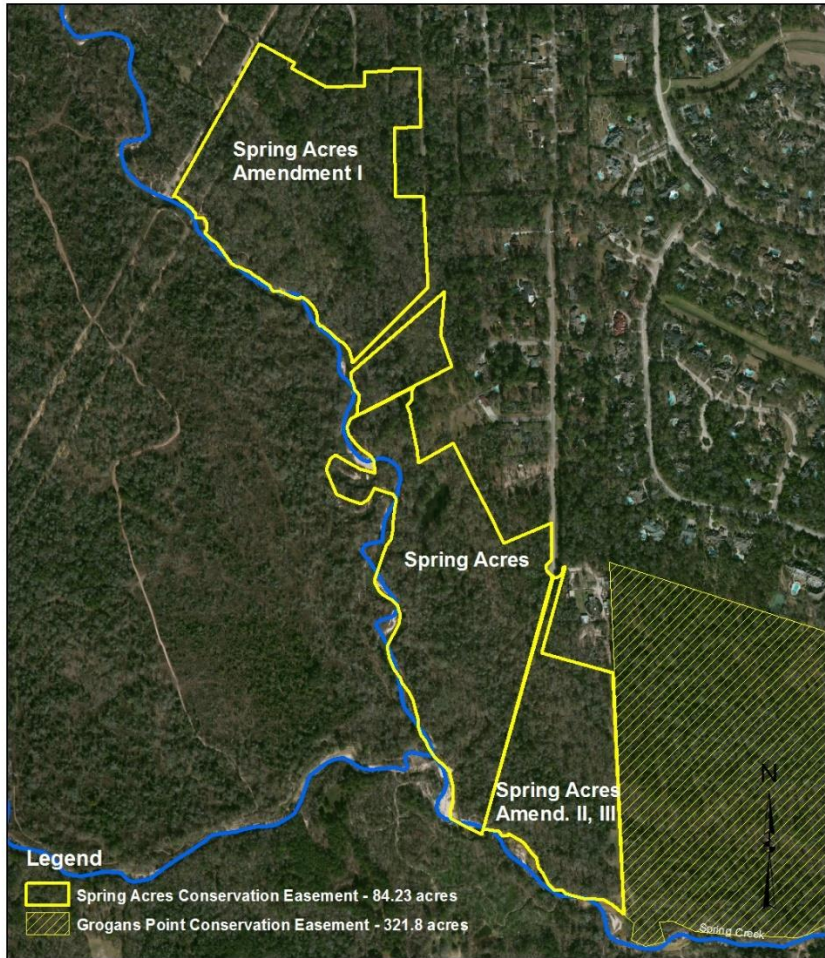
Entergy
1 Acre



24 Acres



128 ACRES TOTAL
CONNECTED,
STRATEGIC
WETLANDS MITIGATION



Legend

- Spring Acres Conservation Easement - 84.23 acres
- Grogans Point Conservation Easement - 321.8 acres



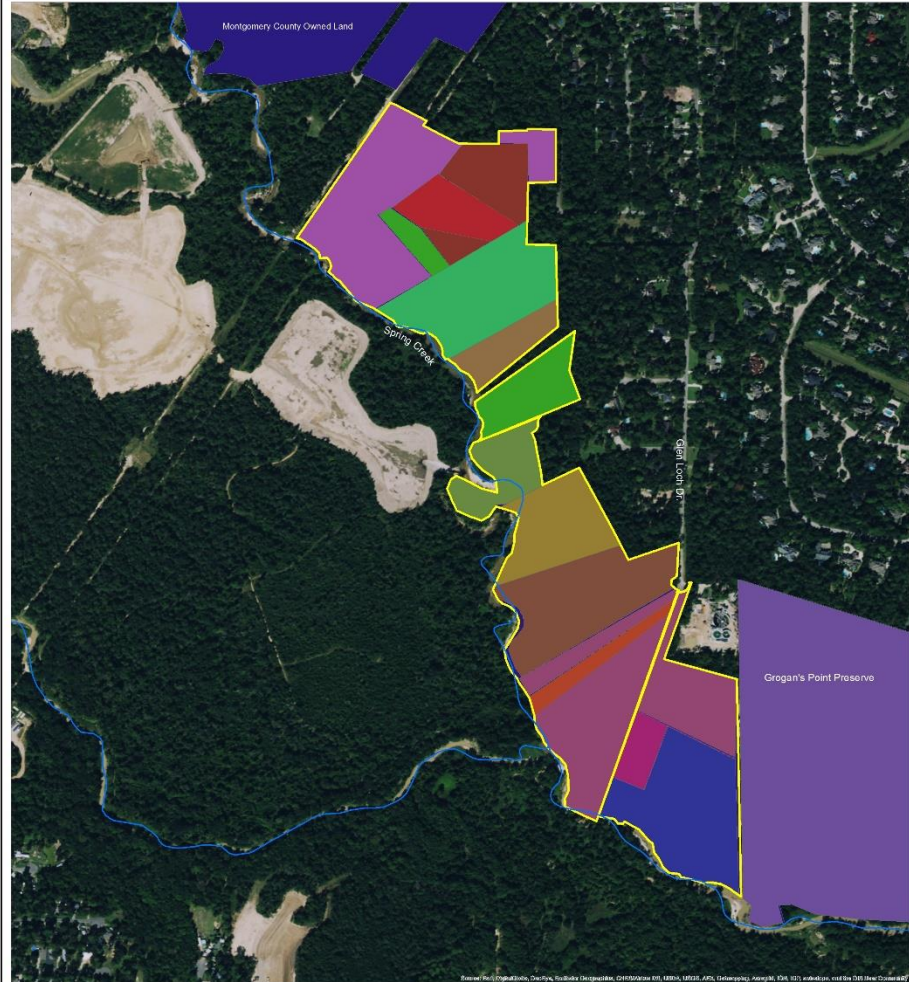
Spring Acres Preserve, Amend I, II, III - 84.255
Spring Creek Greenway

Map Created By:
 Stephanie Prosser
 Bayou Land Conservancy
 5/28/2015

Image Source: www.esri.org
 Imagery: 2012, True Color
 Texas State Plane,
 South Central, NAD83

Spring Acres Preserve

Mitigation Project Map



Legend

- Spring Acres Conservation Easement 84.3 acres



www.bayoulandconservancy.org

Map Drawn By	Stephanie Prosser	Contact	281.576.1634
Organization	Bayou Land Conservancy		
Date	11-6-2015	Coordinate System	NAD 83

SPRING CREEK GREENWAY

- 33 mile connected Greenway
- 12,000 acres
- Connects Harris County to Montgomery County
- Provides \$20 million in ecosystem services annually



SPRING CREEK GREENWAY

- Partnership Between
 - Bayou Land Conservancy
 - Harris County
 - Montgomery County
 - The Woodlands Development Company
 - The Woodlands Township
 - Private Land Owners



Spring Creek Greenway & Portions of Cypress Creek Greenway

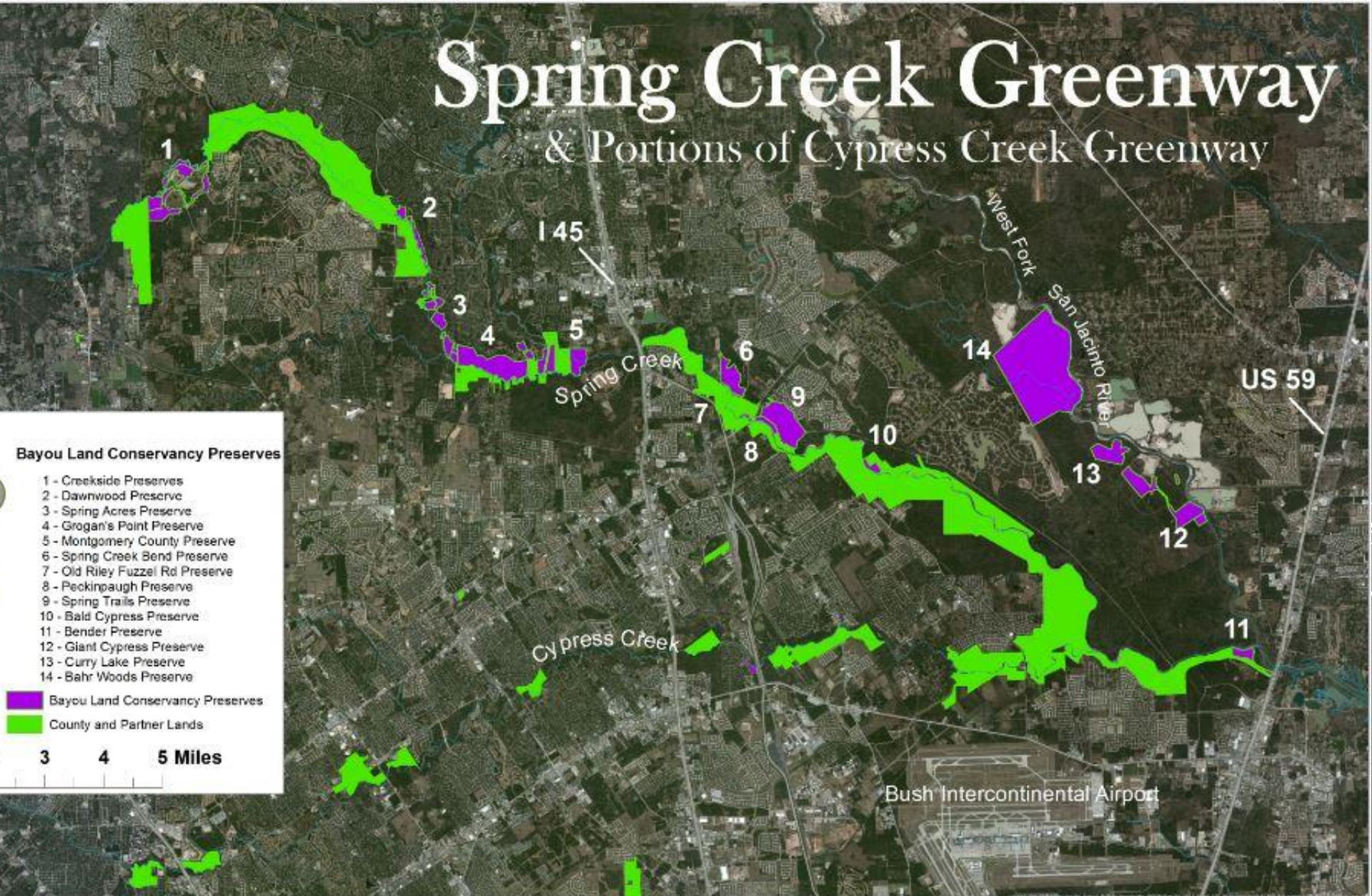
Bayou Land Conservancy Preserves

- 1 - Creekside Preserves
- 2 - Dawnwood Preserve
- 3 - Spring Acres Preserve
- 4 - Grogan's Point Preserve
- 5 - Montgomery County Preserve
- 6 - Spring Creek Bend Preserve
- 7 - Old Riley Fuzzel Rd Preserve
- 8 - Peckinpaugh Preserve
- 9 - Spring Trails Preserve
- 10 - Bald Cypress Preserve
- 11 - Bender Preserve
- 12 - Giant Cypress Preserve
- 13 - Curry Lake Preserve
- 14 - Bahr Woods Preserve

 Bayou Land Conservancy Preserves

 County and Partner Lands

3 4 5 Miles

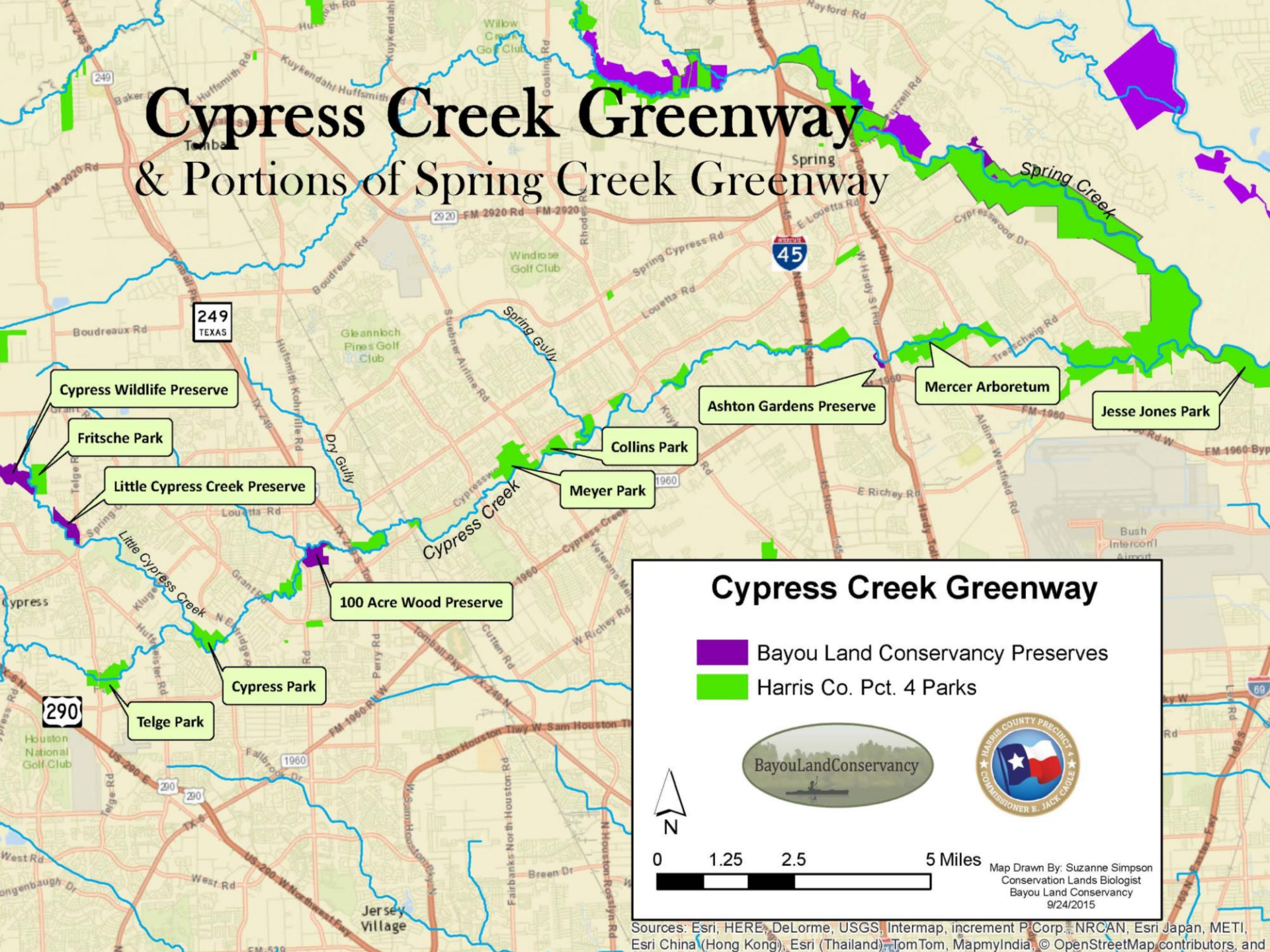


CYPRESS CREEK GREENWAY

Partnership Between:

- Bayou Land Conservancy
- Harris County Precinct 4
- Harris County Flood Control District
- MUD Districts
- Private Land Owners
- Cypress Creek Flood Coalition

Cypress Creek Greenway & Portions of Spring Creek Greenway



Cypress Wildlife Preserve

Fritsche Park

Little Cypress Creek Preserve

100 Acre Wood Preserve

Telge Park

Cypress Park

Meyer Park

Collins Park

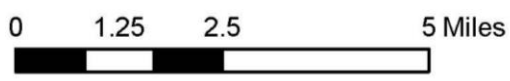
Ashton Gardens Preserve

Mercer Arboretum

Jesse Jones Park

Cypress Creek Greenway

- Bayou Land Conservancy Preserves
- Harris Co. Pct. 4 Parks



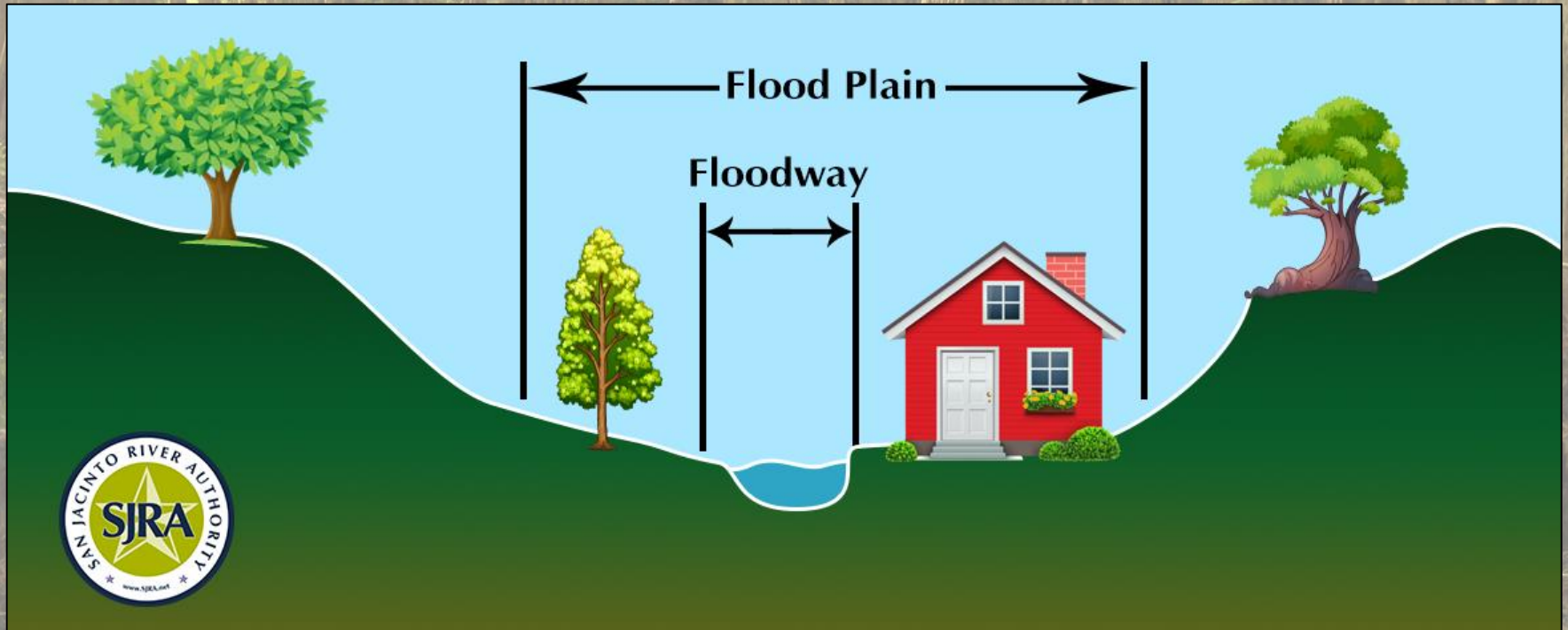
Map Drawn By: Suzanne Simpson
Conservation Lands Biologist
Bayou Land Conservancy
9/24/2015

Sources: Esri, HERE, DeLorme, USGS, Intermap, increment P Corp., NRCAN, Esri Japan, METI, Esri China (Hong Kong), Esri (Thailand), TomTom, MapmyIndia, © OpenStreetMap contributors, and

Arguments against conservation

1. Houston will always flood
2. Burden on Houston's economy
3. Too much damage already done

“Houston will always flood”



Arguments against conservation

1. Houston will always flood
2. Burden on Houston's economy
3. Too much damage already done

“Wetlands are an economic burden”



“Wetlands are an economic burden”



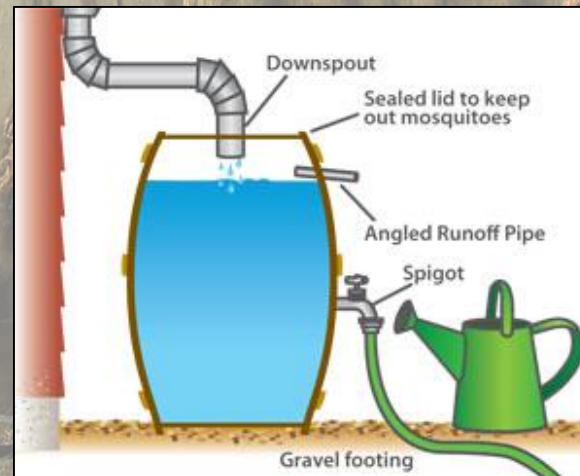


Arguments against conservation

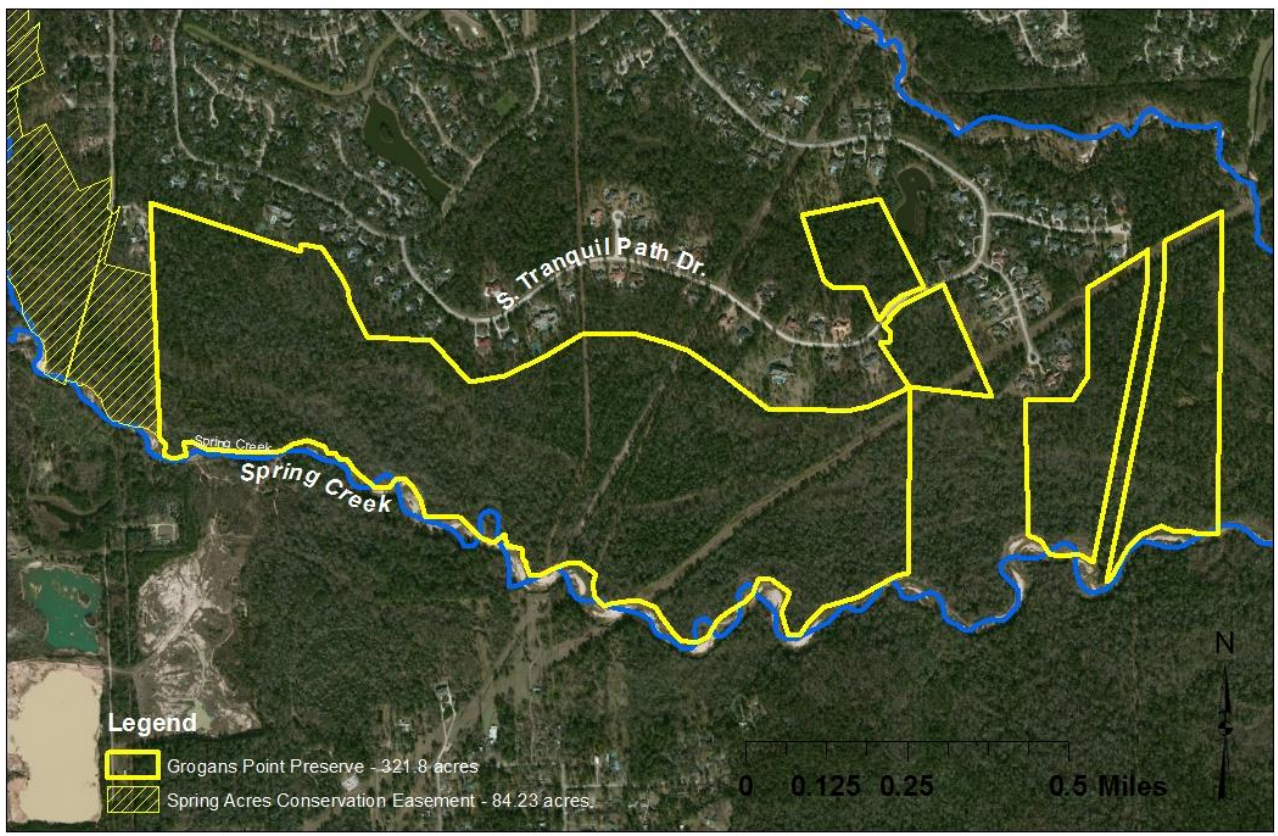
1. Houston will always flood
2. Burden on Houston's economy
3. Too much damage already done

“We’ve already paved too much”

1. Conserve pristine wetlands
2. Restore impacted floodplains
3. Implement green infrastructure



GROGAN'S POINT PRESERVE: CASE STUDY IN CONSERVATION PLANNING



Grogan's Point Preserve - 321.8 acres
Spring Creek Greenway

Map Created By:
Stephanie Prosser
Bayou Land Conservancy
5/28/2015
Image Source: www.esri.org
Imagery: 2012, True Color
Texas State Plane,
South Central, NAD83

<http://conservationeasement.us/>

SEARCH

NCED EASEMENTS

MY NCED

ABOUT

CONTACT US

View NCED Maps

Quick Searches

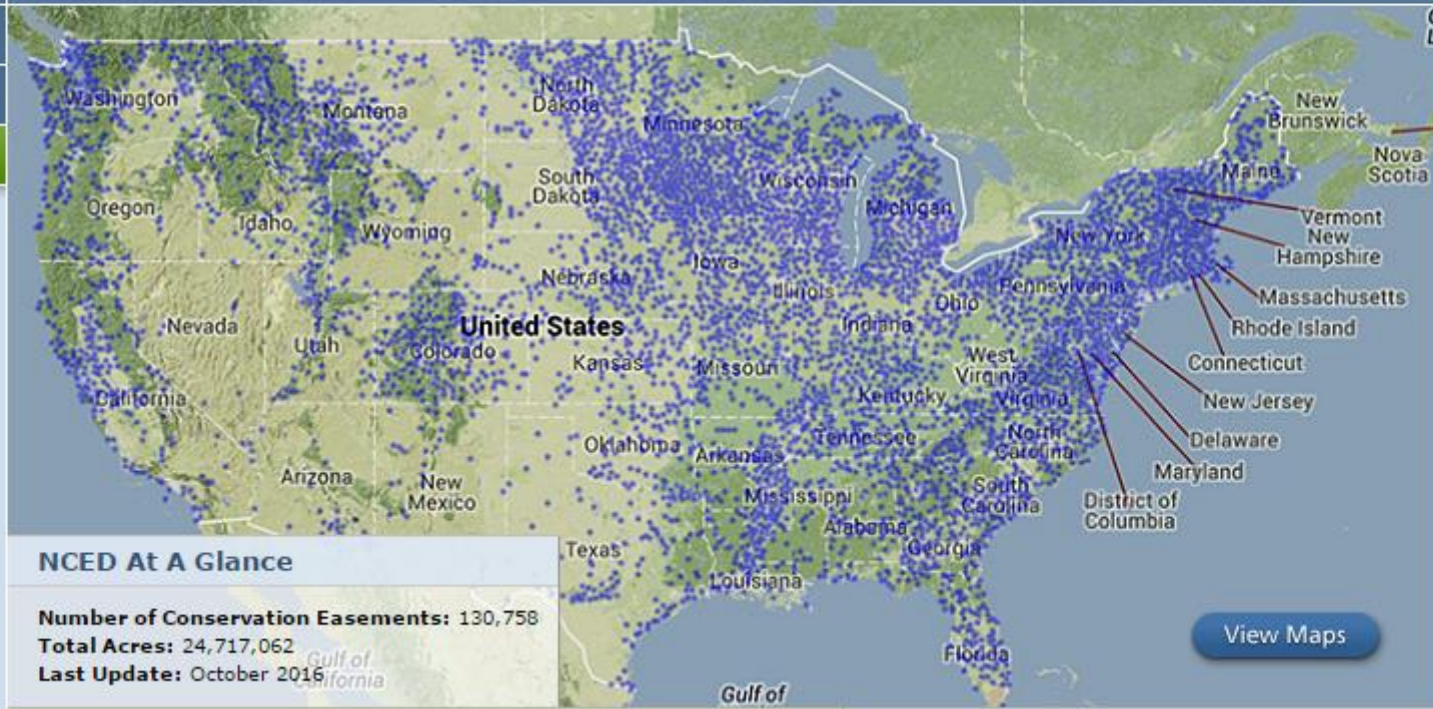
Advanced Search

Add an Easement

Featured Quick Searches

View easements by Easement Holder

- [Federal](#)
- [Native American](#)
- [State](#)
- [Regional Agency](#)
- [Local Government](#)
- [Non-Governmental Organization](#)
- [Private](#)
- [Jointly Held](#)
- [Unknown Landowner](#)
- [Territorial](#)



<https://ribits.usace.army.mil/>



RIBITS

Regulatory In-lieu Fee and Bank Information Tracking System

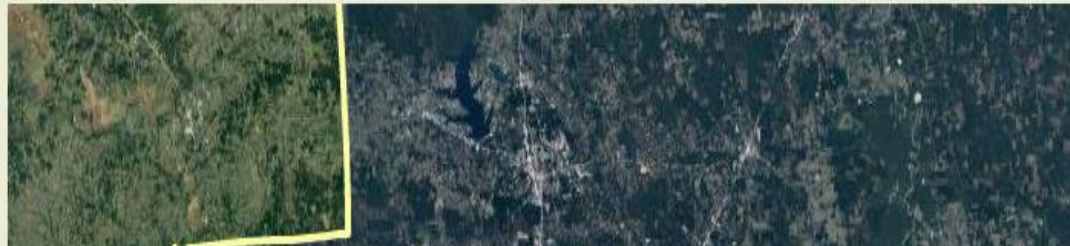
[\[Hide Google Maps\]](#) [\[Print\]](#)

Navigation

- Home
- Mitigation Concepts
- Banks & ILF Sites
- ILF Programs
- Reporting
- Bank & ILF Establishment

RIBITS

Roads Borders Counties



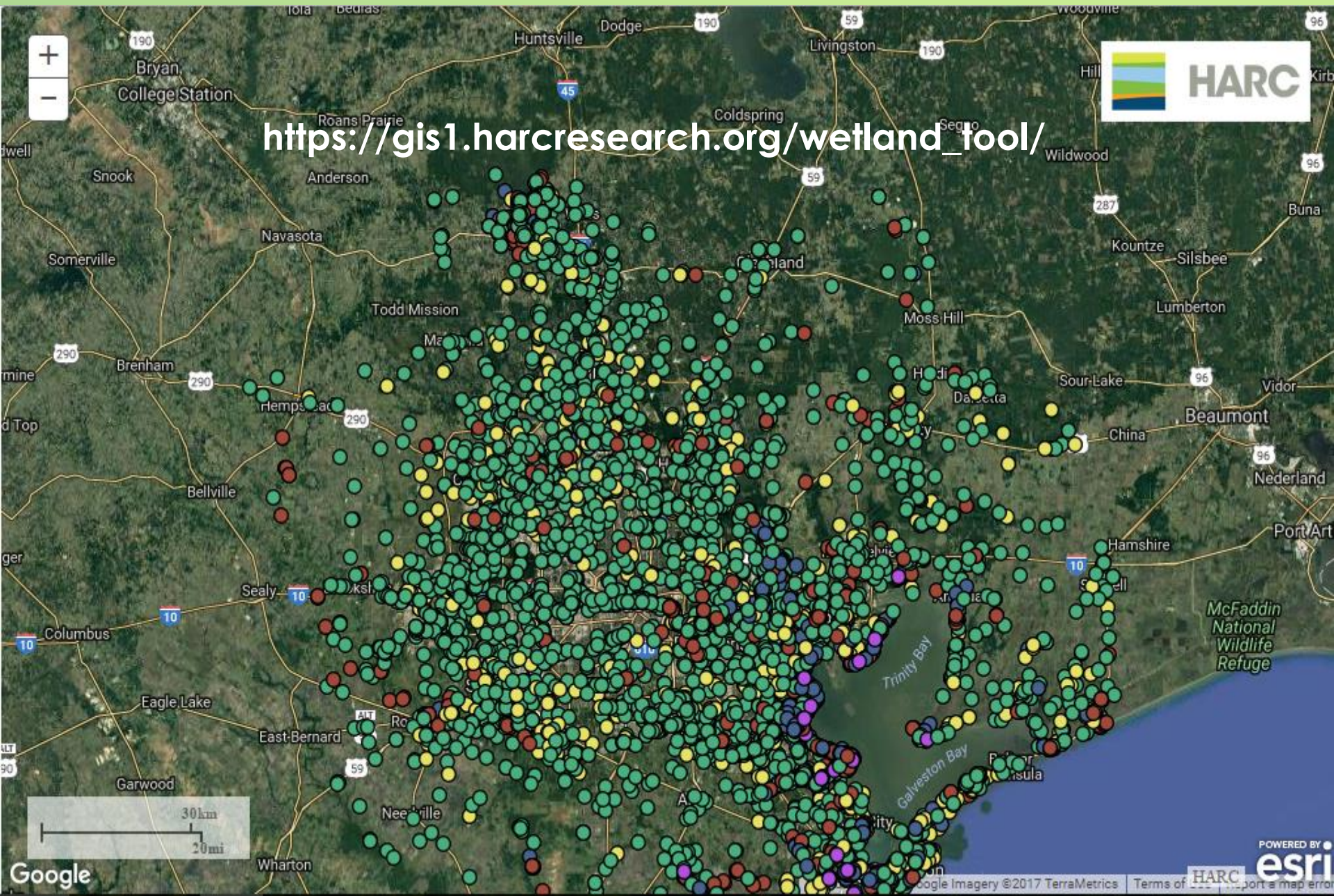
RIBITS Sponsors



US Army Corps
of Engineers



https://gis1.harcresearch.org/wetland_tool/



McFaddin National Wildlife Refuge

POWERED BY
HARC esri

Google Imagery ©2017 TerraMetrics Terms of Use Support a map error

- ▶ ssimpson@bayouland.org
- ▶ 281-576-1634 (o)
- ▶ 713-628-4200 (c)

SUZANNE SIMPSON, LAND
STEWARDSHIP DIRECTOR

