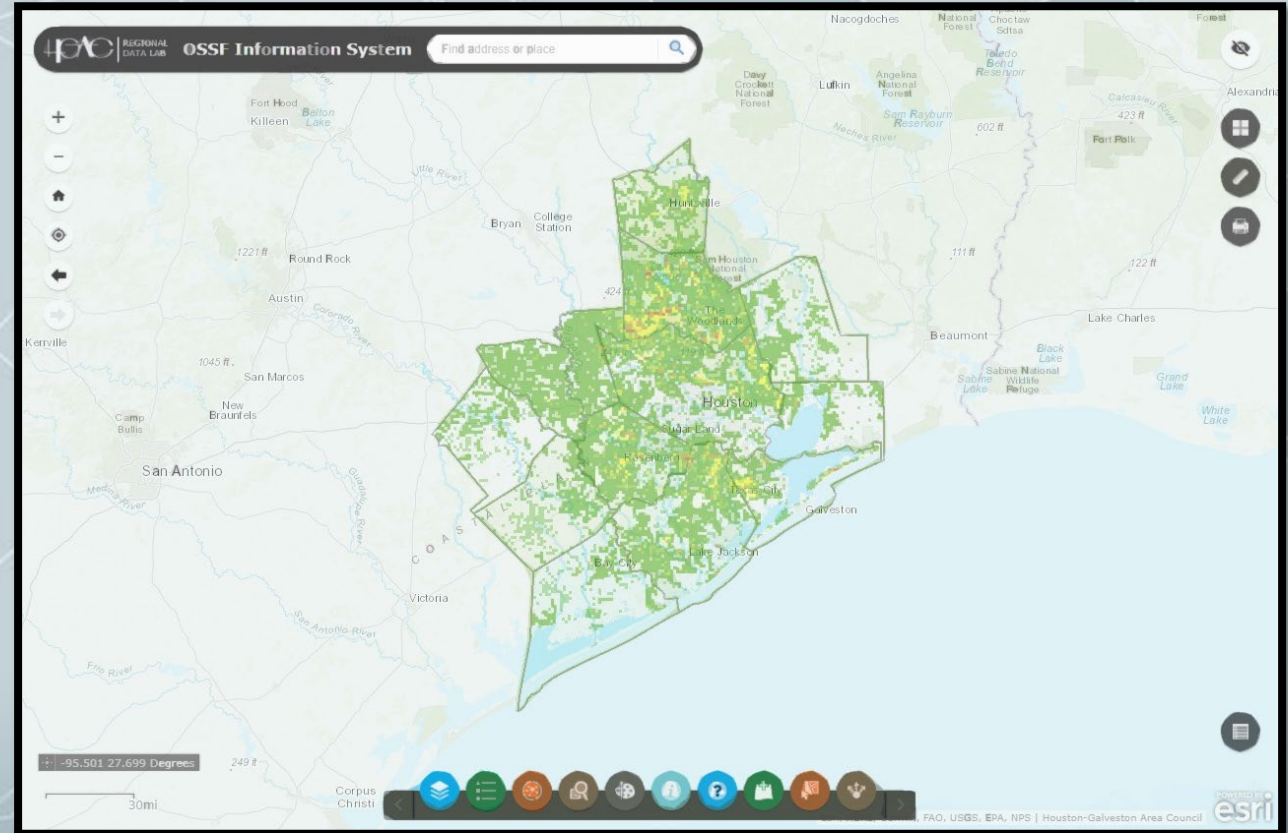


# On-Site Sewage Facility Mapping Tool

**Jessie Casillas**  
Senior Planner  
Water Resources

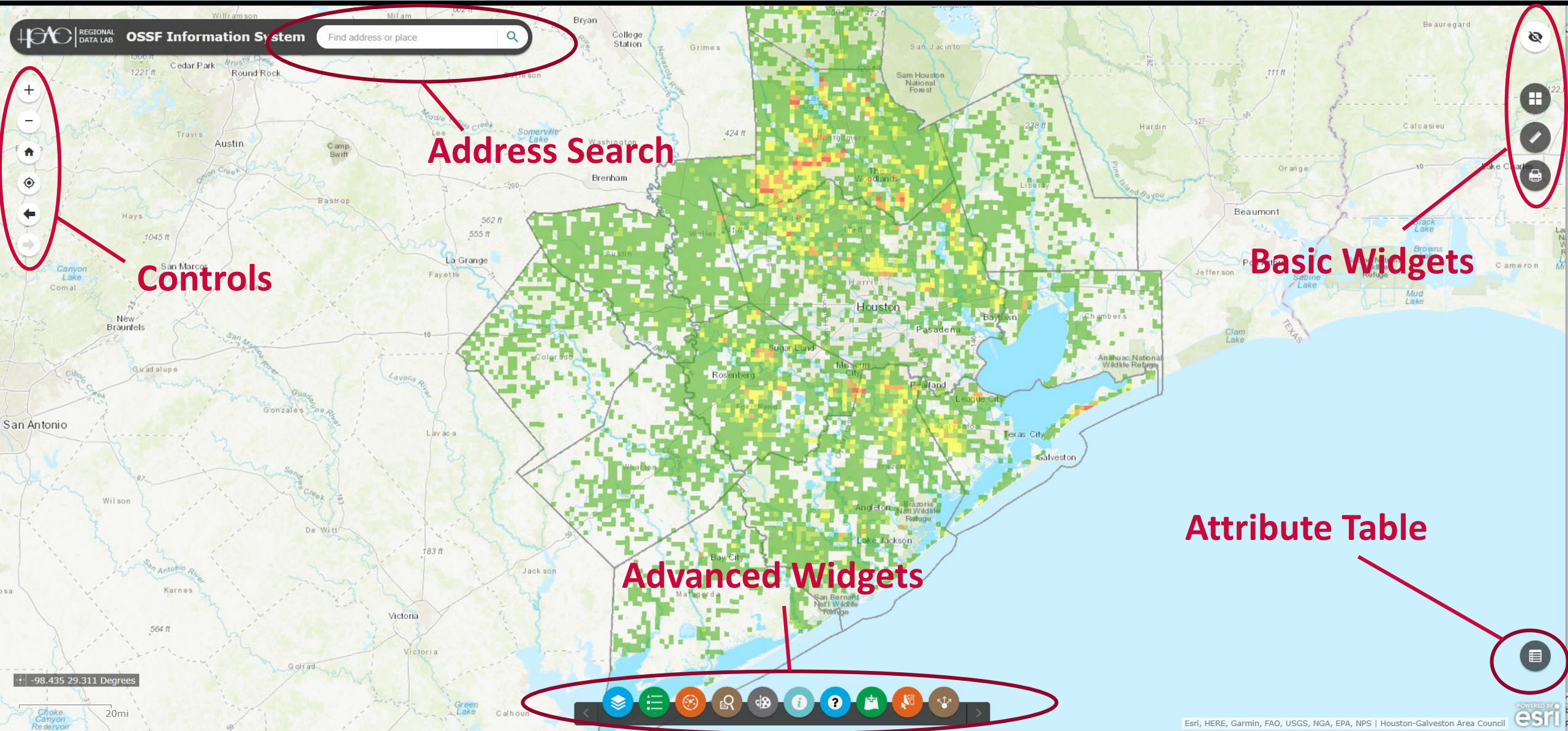
# OSSF Mapping Tool

- H-GAC's **On-Site Sewage Facility (OSSF) Mapping Tool** is an online database and Geographical Information System (GIS) mapping tool for OSSF permits in the Houston-Galveston Region.
- The OSSF Mapping Tool is available at the following URL: <http://datalab.h-gac.com/ossf/>
- The system is compiled from OSSF permit data submitted to H-GAC by the Region's Authorized Agents responsible for permitting and enforcement of these systems.
- Currently includes complete or partial data from the following counties:
  - Austin, Brazoria, Chambers, Colorado, Fort Bend, Galveston, Harris, Liberty, Matagorda, Montgomery, Walker, Waller, Wharton, and Grimes
- The database includes over 144,500 permitted OSSFs in the H-GAC region.



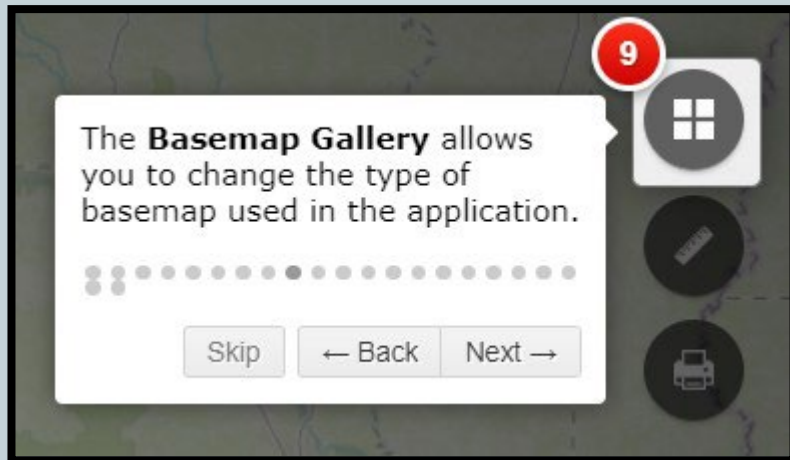


# OSSF Mapping Tool

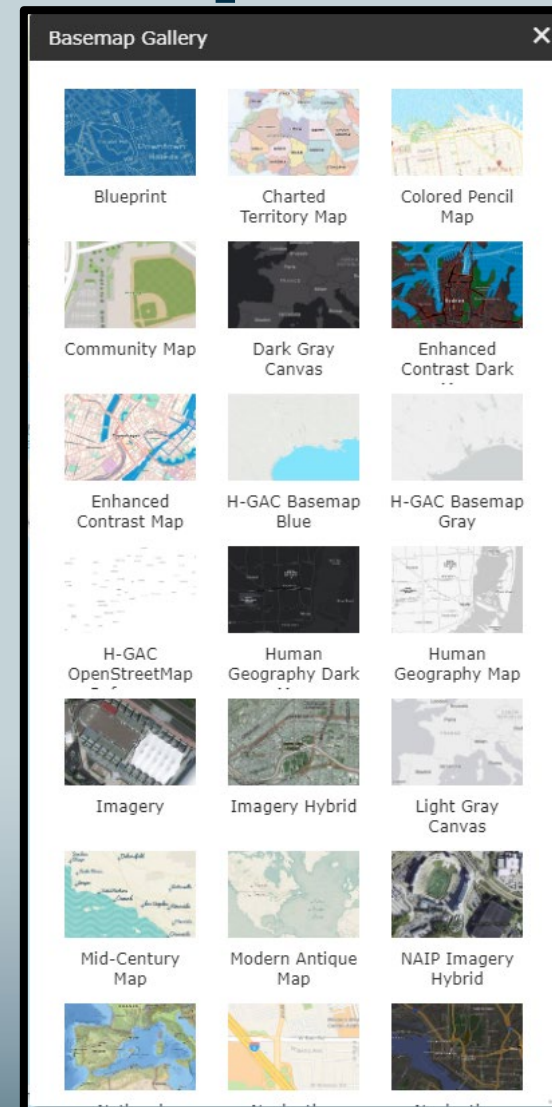


Attribute Table

# Basic Widgets - Basemap Gallery

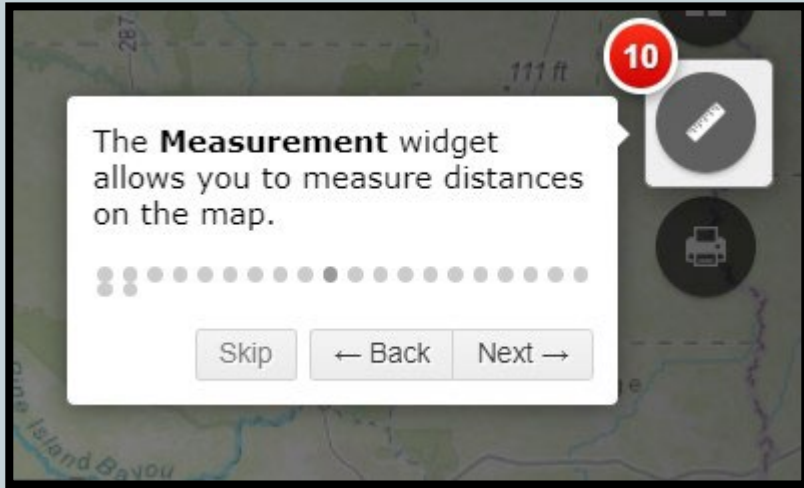


- There are 33 available **basemaps** that can be used to display the maps in the Online Mapping Tool
- Additional basemaps can be imported





# Basic Widgets - Measurement



The **Measurement** tool allows for the measurement of:

- Distances
- Area
- GPS coordinates of a point on the map.

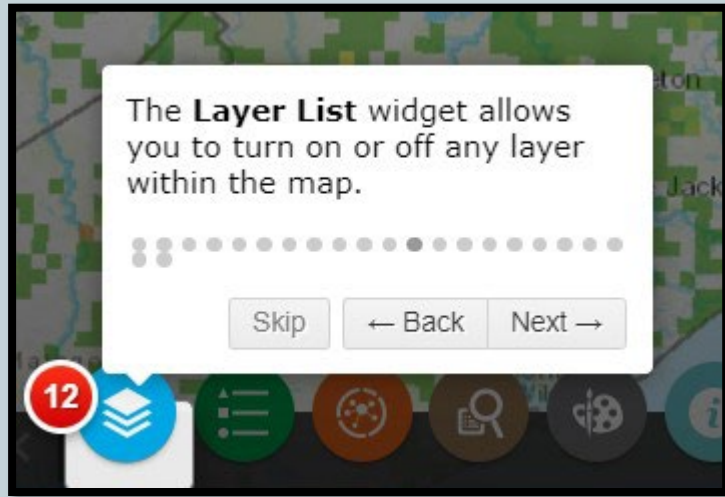
# Advanced Widgets

Advanced Widgets allow for higher-level functions.

These controls include:

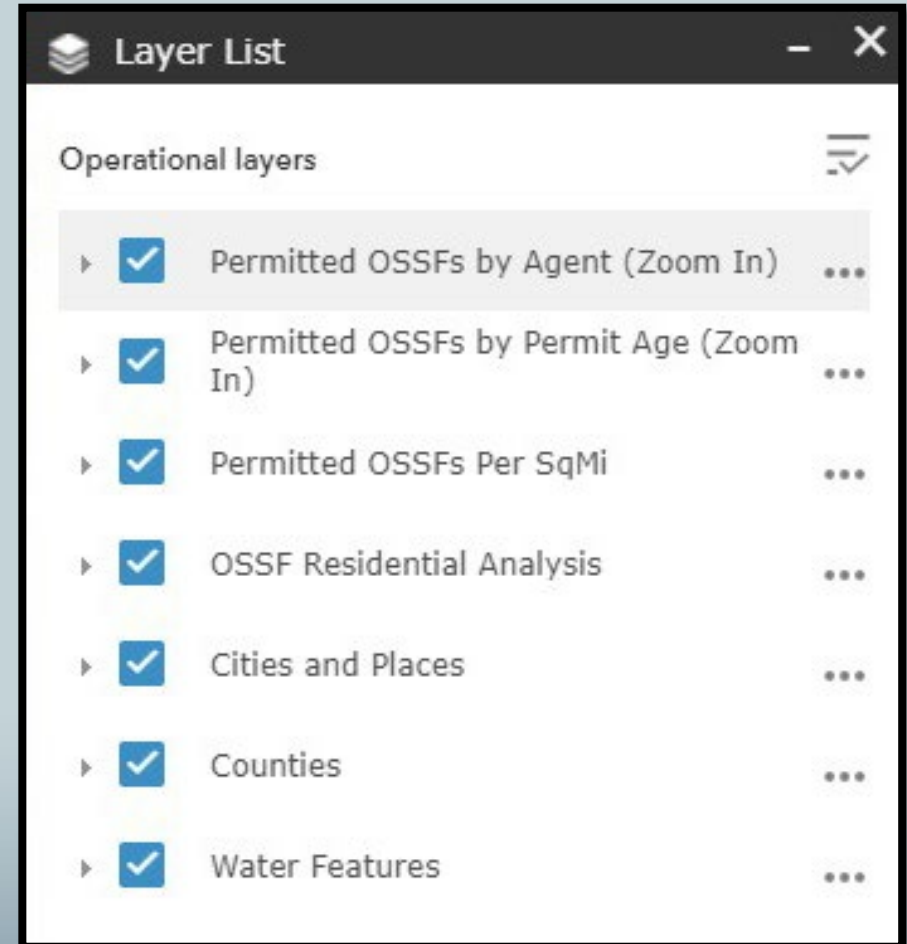
- Layer List
- Legend
- Location Analysis
- Query
- Draw
- Additional Resources
- Application Data
- Add Data
- Select
- Share

# Advanced Widgets - Layers List

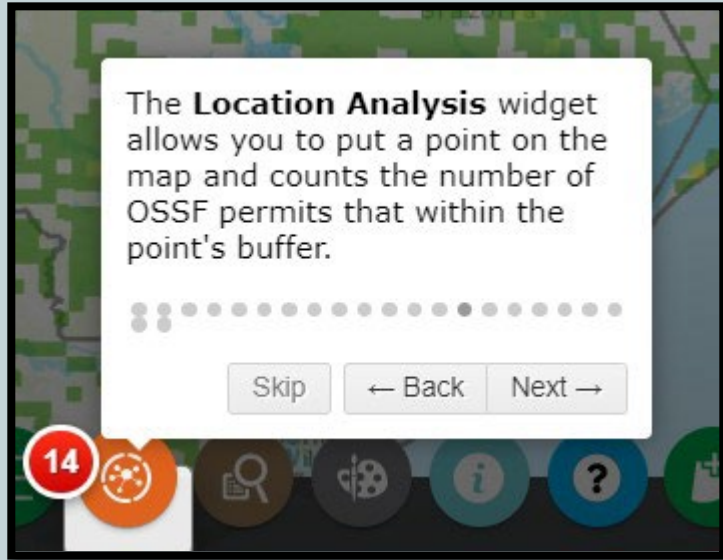


The **Layers List** allows the user to turn on or off layers within the map.

- Permitting Agent (Authorized Agent)
- Permit Age
- Residential Analysis
- Geographical elements (cities, counties, water bodies)



# Advanced Widgets - Location Analysis

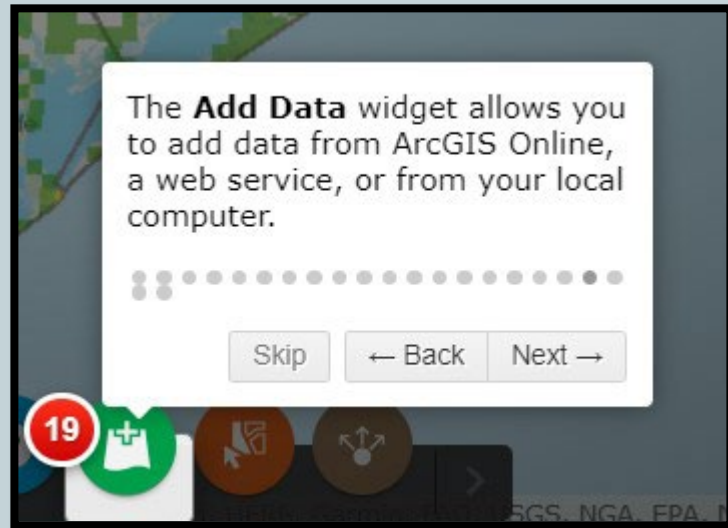


The **Location Analysis** function is useful for determining the number of OSSFs within a user-defined buffer around a point, a line, or within an area.

- This function allows you to determine not only the number of OSSFs within the buffer, but also the number by age category.

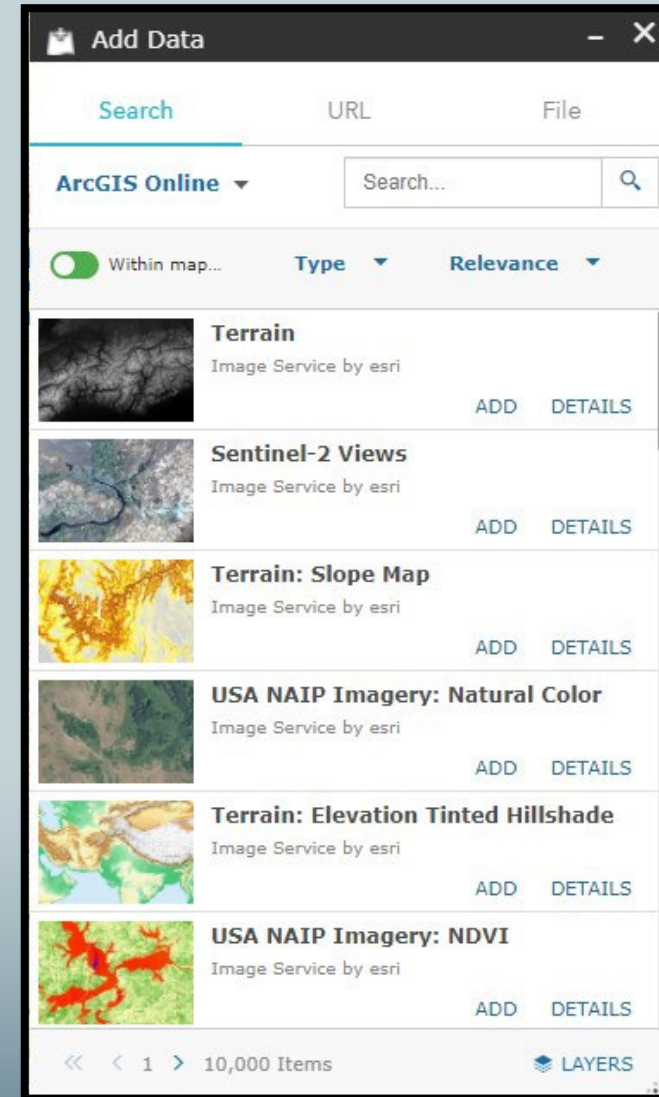


# Advanced Widgets – Add Data

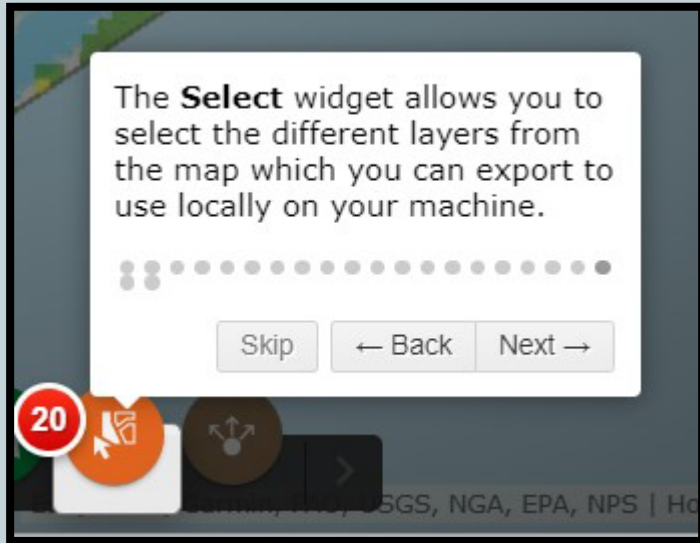


The **Add Data** feature allows the user to temporarily add external data layers to the OSSF Mapping Tool

- From ArcGIS Online
- From a web address
- From a file (such as a .csv file)



# Advanced Widgets – Select



The **Select** widget allows the user to select specific layers from the map and export the data for use.

This tool allows you to export the data in the selected area to a .csv file.

You can also perform basic statistics such as counts, averages, and minimums and maximums.

# Advanced Widgets - Other

- **Legend** – shows the legend for the layers that are active
- **Draw** – allows the user to draw shapes, add text boxes, etc.
- **Query** – allows the user to query for a specific OSSF permit (by permit number)
- **Additional Information** – allows the user to access the User Guide
- **Application Help** – provides a quick explanation of the control buttons
- **Share** – allows the user to send the application to others

# Attribute Table



The **Attribute Table** feature allows the user to view tabular OSSF permit data.

The level of detail varies by Authorized Agent, but generally includes:

- Permit number
- Location (GPS coordinates)
- System Type
- Date Permitted/Installed



# Acknowledgements

***PREPARED IN COOPERATION WITH THE TEXAS COMMISSION ON ENVIRONMENTAL QUALITY AND U.S. ENVIRONMENTAL PROTECTION AGENCY***

*This project has been funded wholly or in part by the United States Environmental Protection Agency under a Clean Water Act Section 604(b) grant to the Texas Commission on Environmental Quality. The contents of this document do not necessarily reflect the views and policies of the Environmental Protection Agency, nor does the EPA endorse trade names or recommend the use of commercial products mentioned in this document.*



# Contact Information

For more information, please contact:

Jessie Casillas  
Senior Planner  
Houston-Galveston Area Council  
713-993-4594  
[jessica.casillas@h-gac.com](mailto:jessica.casillas@h-gac.com)