

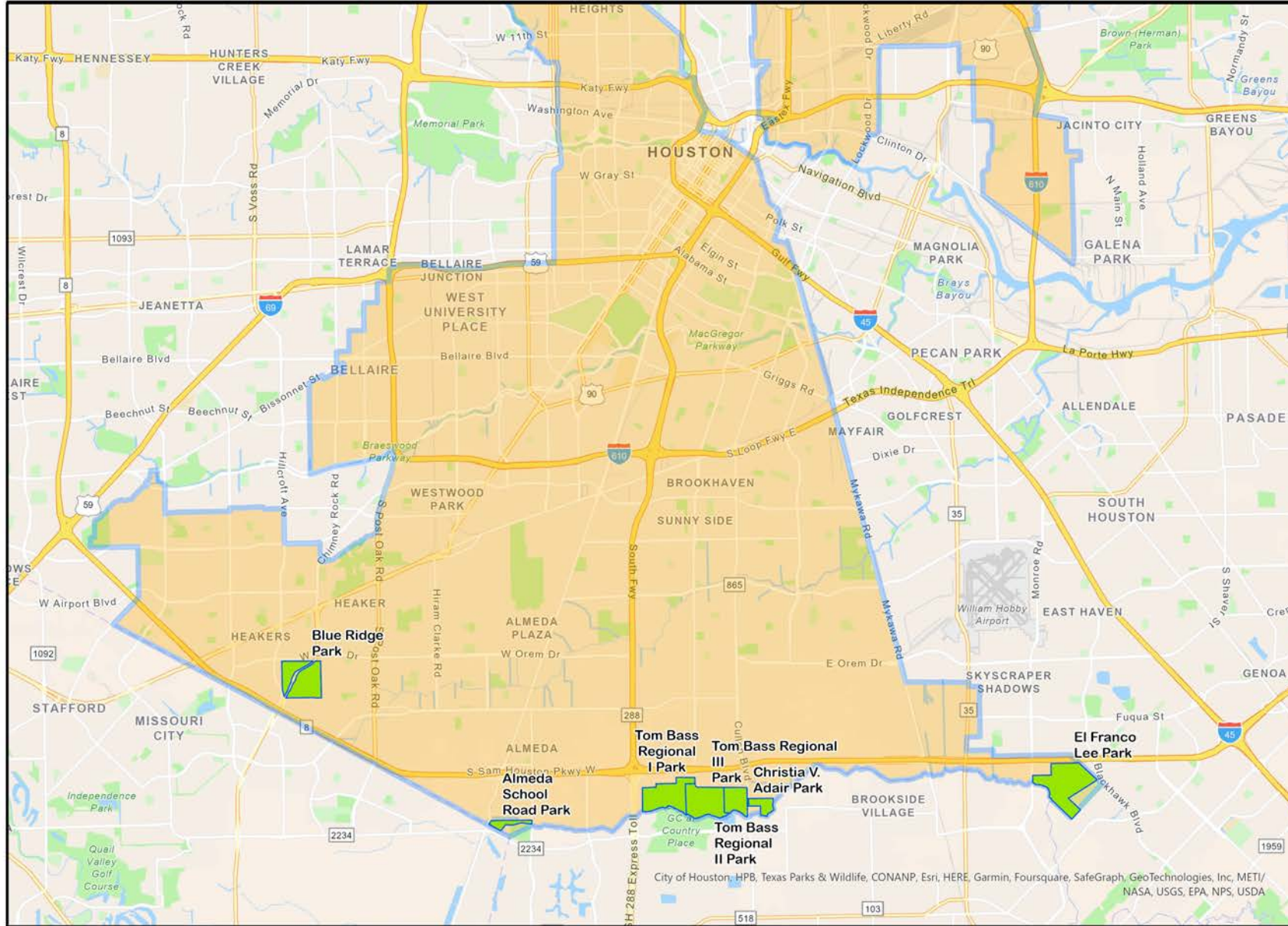
Almeda Road Nature Reserve



Rodney Ellis
COMMISSIONER
PRECINCT ONE

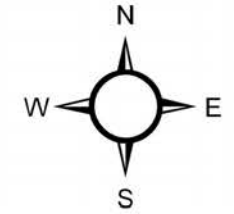


Precinct One Parks



Legend

- Park Boundary
- Precinct 1



Rodney Ellis
COMMISSIONER
PRECINCT ONE





How did we get here?

- We don't know much about the park's history.
- It has been a county park since 1988.
- We were looking for native prairie restoration sites.
- We decided to stop mowing to assess the site in March 2023.











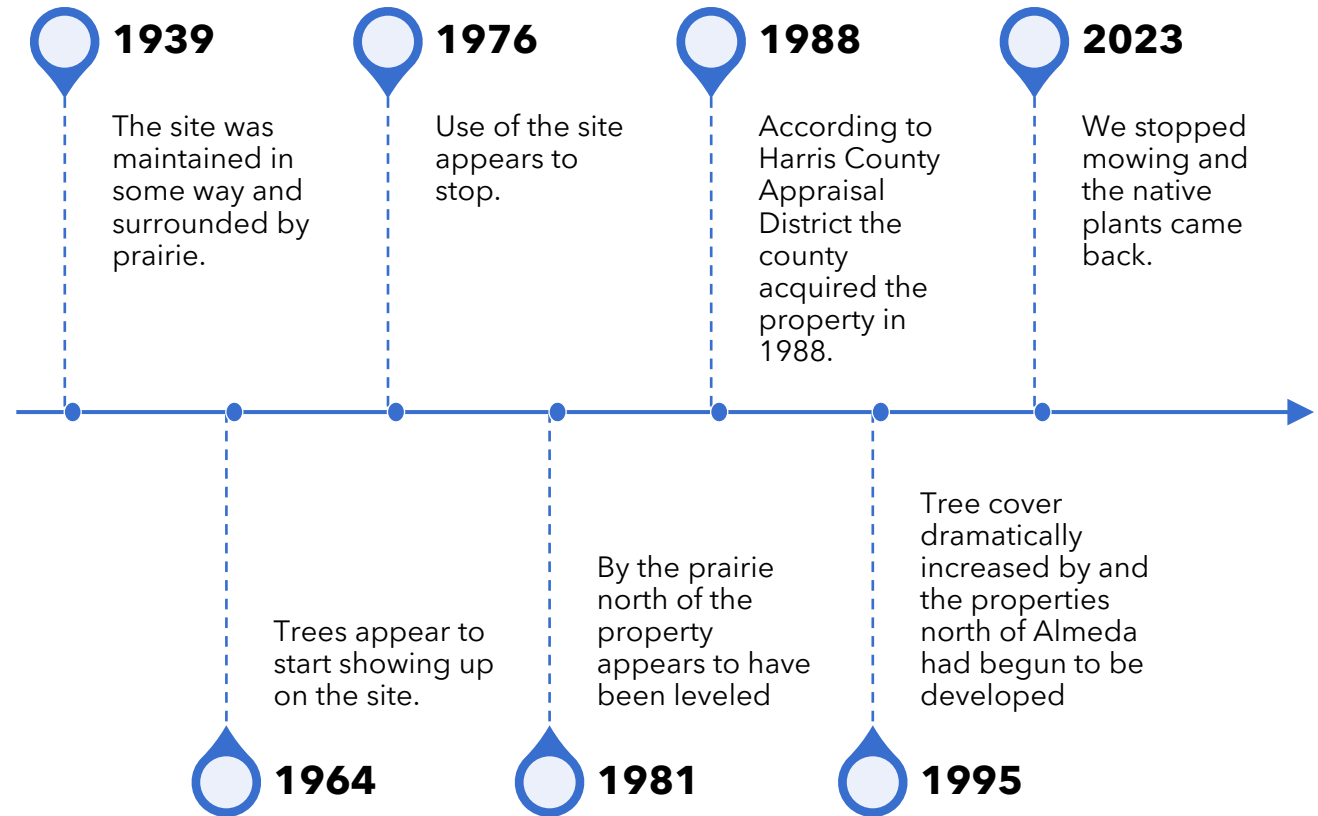


Is this truly "remnant" prairie?



- It depends on the definition
- This area was historically native prairie
- It does appear to have been disturbed
- The assemblage of species returning seems to indicate it is

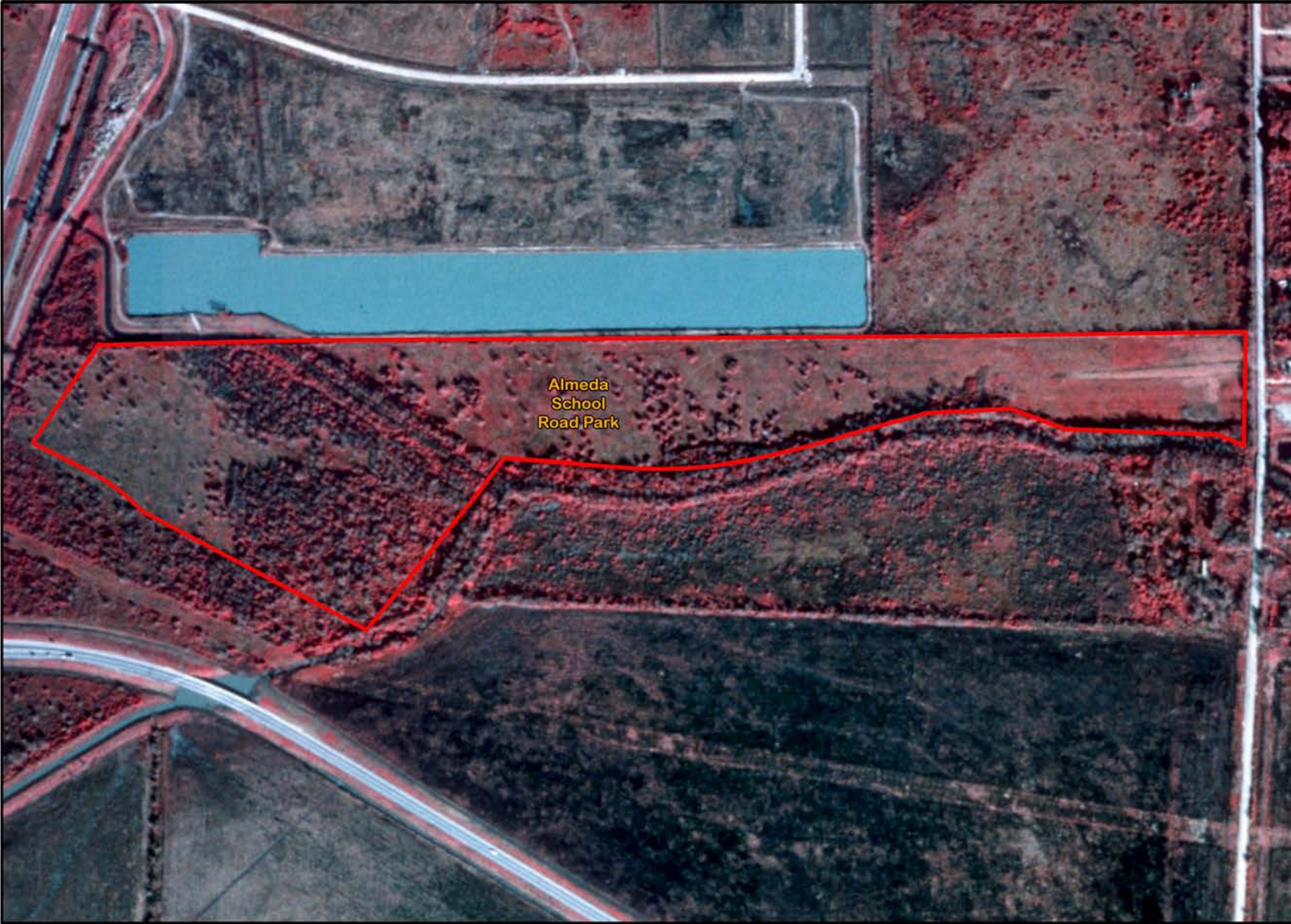
What do we know about park's history?





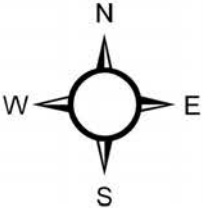
1939 Farm Service Agency Aerial Imagery

1995 Harris County Aerial



Legend

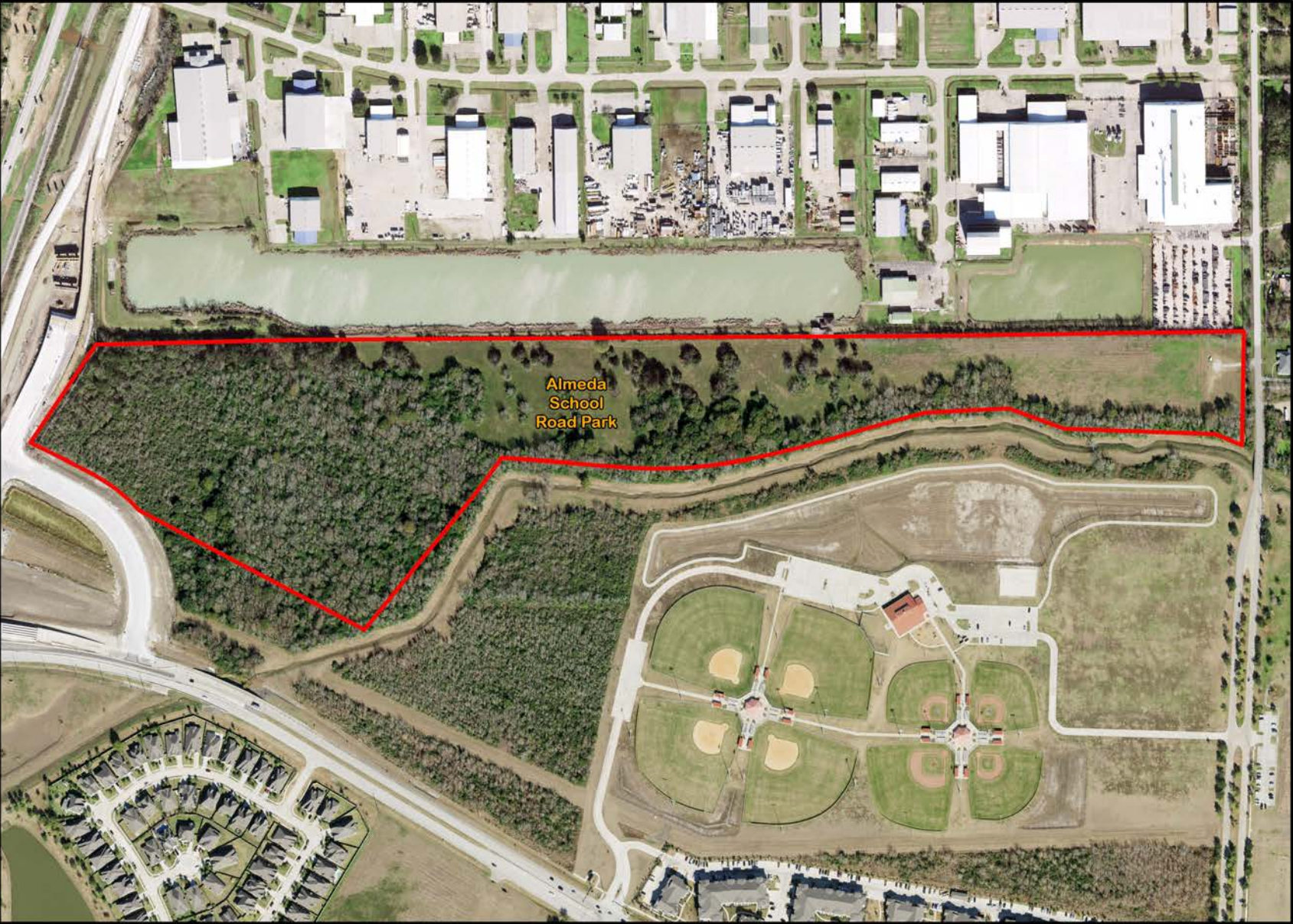
 Park Boundary



Rodney Ellis
COMMISSIONER
PRECINCT ONE

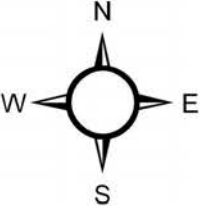


2020 Harris County Aerial



Legend

 Park Boundary



Rodney Ellis
COMMISSIONER
PRECINCT ONE



What have we found?

- Violet ruellia
- Traub's rain-lily
- Rattlesnake master
- Texas prairie parsley
- Hemp dogbane
- Green antelopehorn
- Oppositeleaf spotflower
- Ovateleaf cacalia
- Golden tickseed
- Southern sneezeweed
- Narrowleaf sunflower
- Sharp blazing star
- Prairie blazing star
- Upright prairie coneflower
- Blackeyed susan
- Texas coneflower
- Southern seaside goldenrod
- Missouri ironweed
- Claspig venus' looking-glass
- Hypericum sp.
- Spiderwort
- Silky evolvulus
- Cherokee sedge
- Fimbristylis sp.
- Common persimmon
- Yellow wild indigo
- Scarlet pea
- Powderpuff
- Yellow puff
- Louisiana vetch
- Meadow pink
- Prairie nymph
- Large grass-leaved rush
- Browne's savory
- Lyre leaf sage
- Crow poison
- Winged loosestrife
- Winecup mallow
- Maryland meadowbeauty
- Spring lady's tresses
- Velvet panicgrass
- Texas wintergrass
- Longtom paspalum
- Brownseed paspalum
- Longspike tridens
- Virginia buttonweed
- Saw greenbrier
- Carolina horsenettle
- Sugarberry
- Beaked cornsalad
- Frogfruit



What do we need to work on?

- Preventing invasive species and woody plant encroachment
 - Thinning the tree mottes
 - Controlling Macartney Rose, Vasey Grass and Tallow Trees
- Collecting seeds to be replanted at this site and others



Other Candidates for Prairie Restoration

Blue Ridge Park

Tom Bass I Park

Tom Bass II Park

Tom Bass III Park

Adair Park

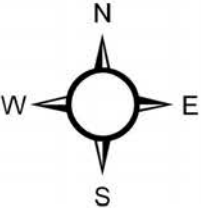
El Franco Lee Park

1944 Harris County Aerial



Legend

- Potential Remnant Prairie Areas
- Park Boundary





Rodney Ellis
COMMISSIONER
PRECINCT ONE

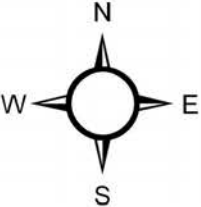


1978 Harris County Aerial



Legend

-  Potential Remnant Prairie Areas
-  Park Boundary

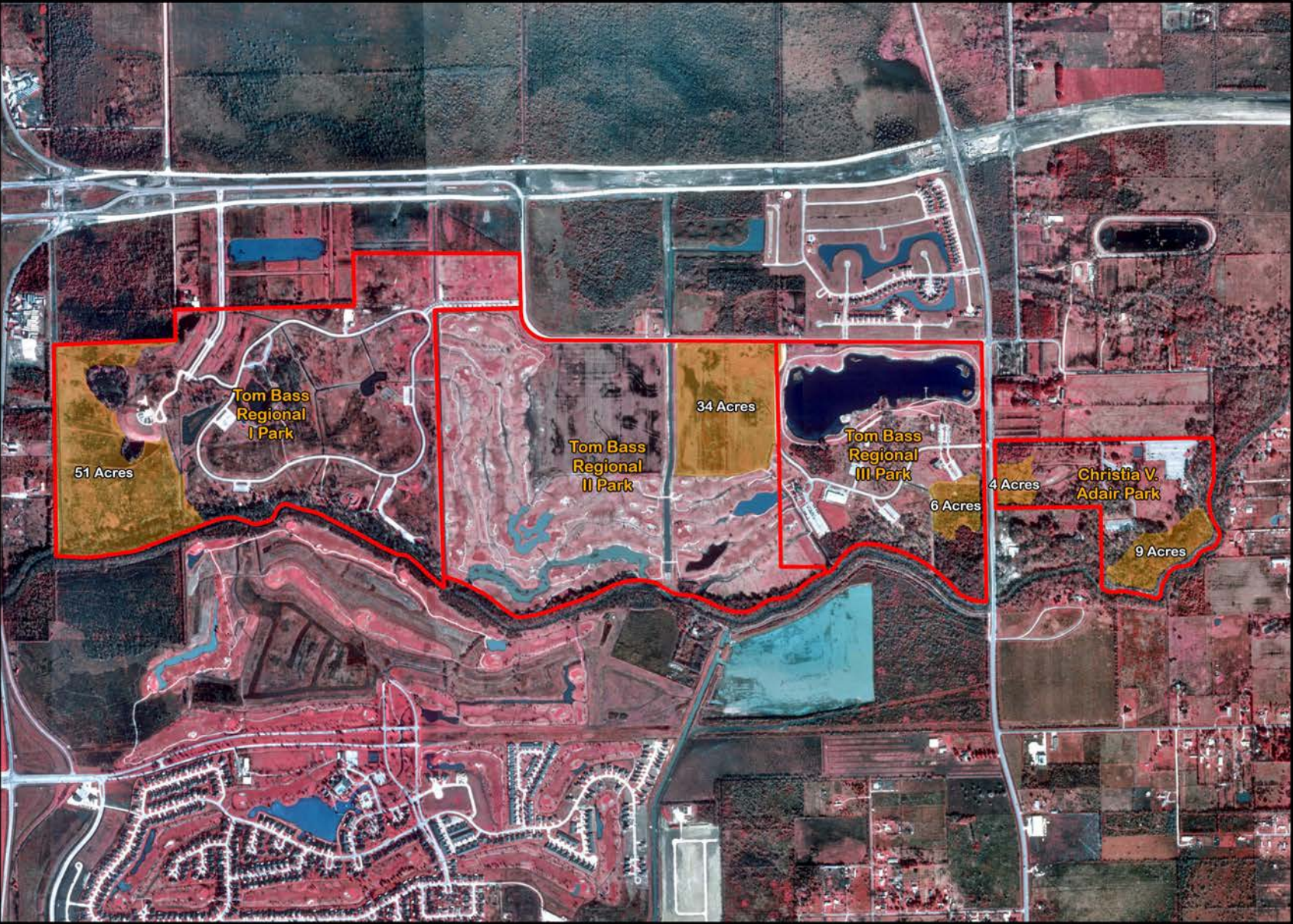


Rodney Ellis
COMMISSIONER
PRECINCT ONE

0 1,250 2,500 5,000 Feet

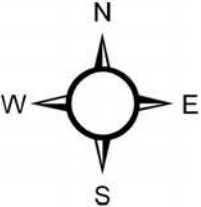
Produced by Royce Daniels

1995 Harris County Aerial



Legend

- Potential Remnant Prairie Areas
- Park Boundary

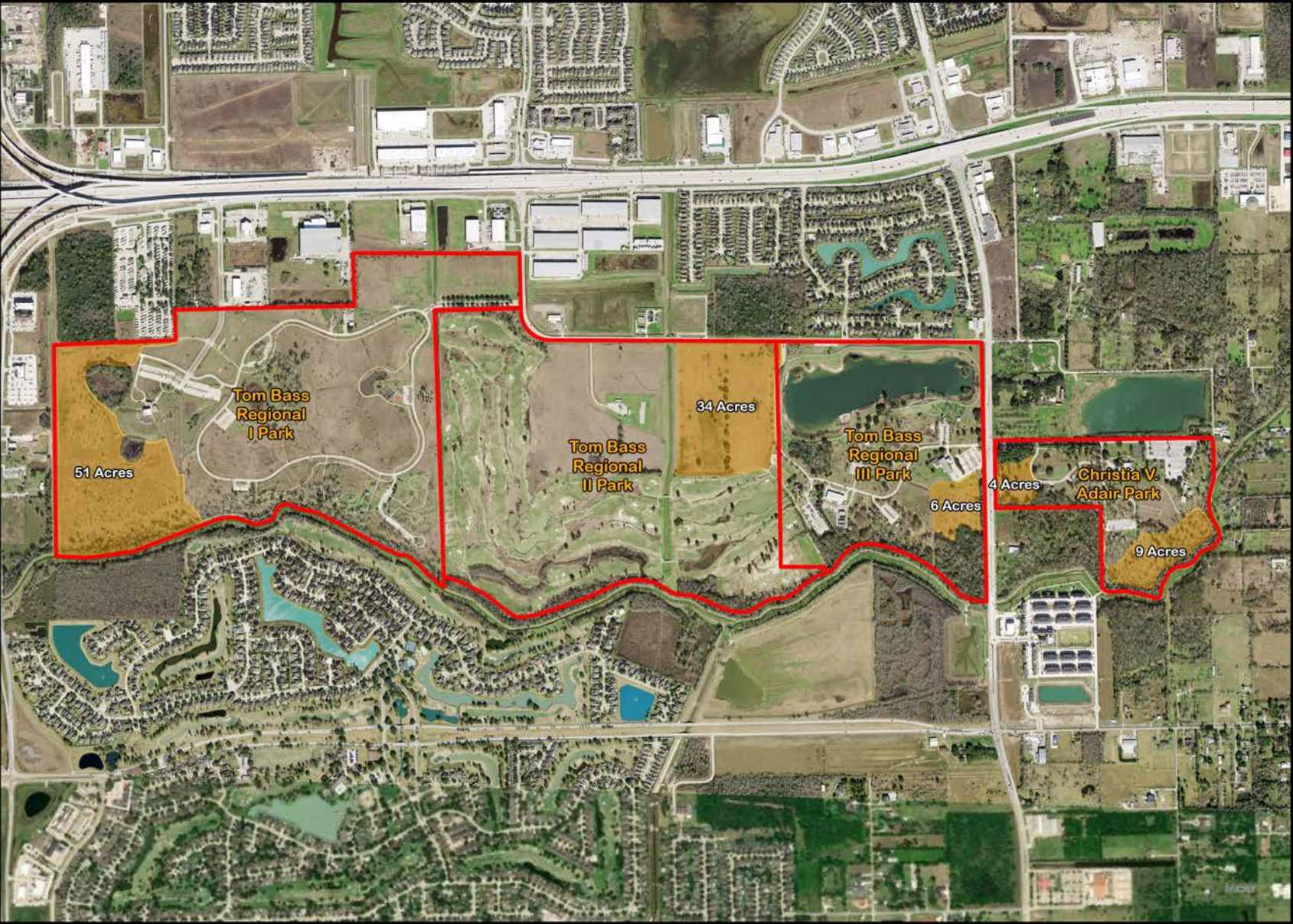


Rodney Ellis
COMMISSIONER
PRECINCT ONE

0 1,250 2,500 5,000 Feet

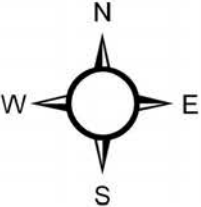
Produced by Royce Daniels

2020 Harris County Aerial



Legend

- Potential Remnant Prairie Areas
- Park Boundary



Rodney Ellis
COMMISSIONER
PRECINCT ONE



What do we need help with?



- Plant surveys
- Bird surveys
- Seed collection
- Awareness

We realized we may have native prairie left



We stopped mowing



The prairie showed signs of recovery



Work still needs to be done



Rodney Ellis
COMMISSIONER
PRECINCT ONE

Royce Daniels
Environmental Field Operations Coordinator
Royce.Daniels@cp1.hctx.net
832-584-1260

Thank
you!