

## HOUSTON-GALVESTON AREA COUNCIL



### Temporary Pedestrian/Bicycle Counters Data Summary

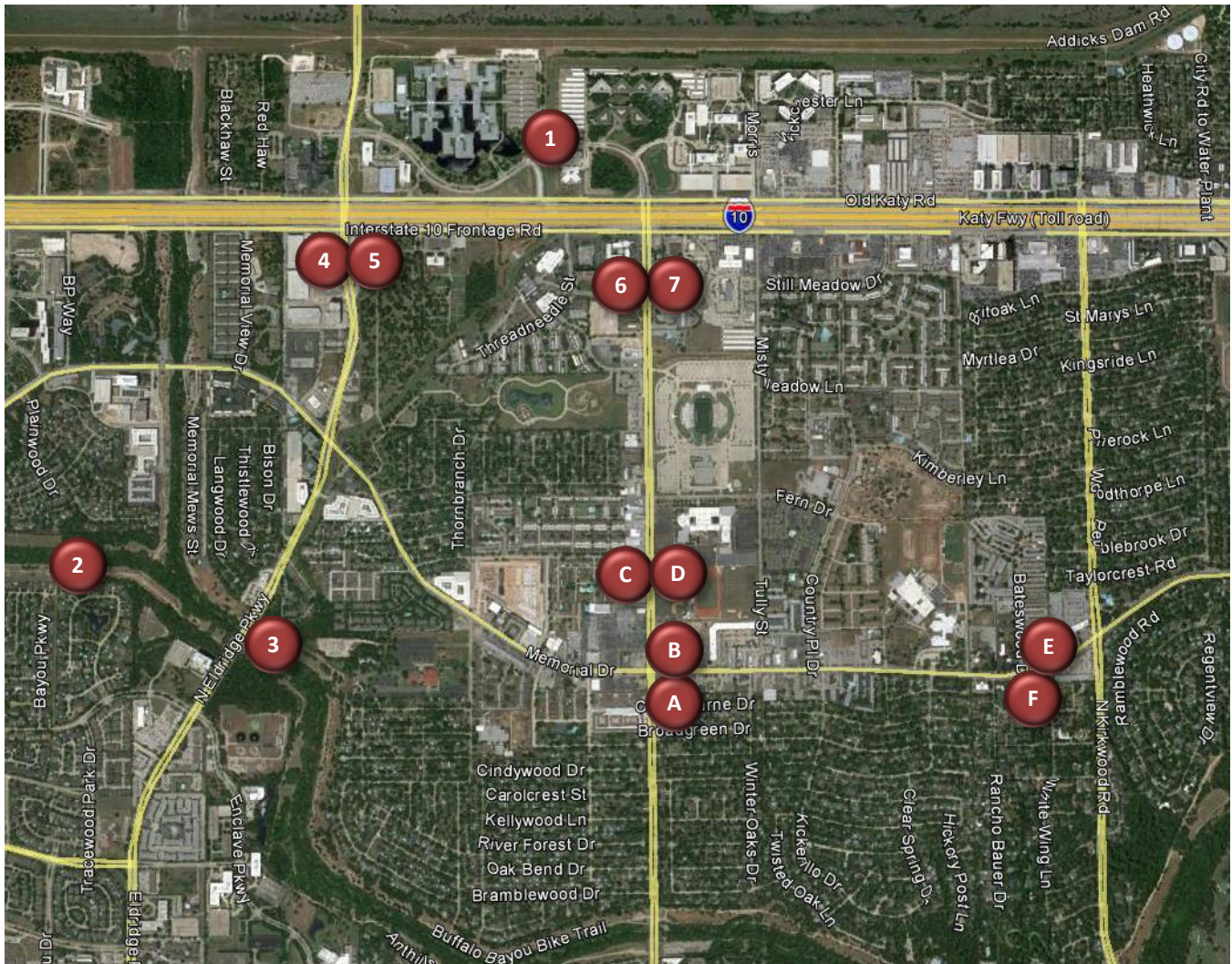
Deployment Summary	
Sponsoring Agency	Houston-Galveston Area Council Texas Transportation Institute
Deployment Period	Tuesday, November 3, 2015 – Sunday, November 15, 2015
Number of Counters Deployed	13
Locations Deployed (Houston-Galveston Area Council)	
Counter #1	Turkey Creek Trail at N. Dairy Ashford Road
Counter #2	Terry Hershey Hike and Bike Trail (West of Eldridge Parkway)
Counter #3	Terry Hershey Hike and Bike Trail (East of Eldridge Parkway)
Counter #4	N. Eldridge Parkway Southbound at Interstate 10 Eastbound Frontage Road
Counter #5	N. Eldridge Parkway Northbound at Interstate 10 Eastbound Frontage Road
Counter #6	N. Dairy Ashford Road Southbound at St. Mary's Lane (NW Corner)
Counter #7	N. Dairy Ashford Road Northbound at St. Mary's Lane (NE Corner)
Locations Deployed (Texas Transportation Institute)	
Counter A	Memorial Drive Eastbound at N. Dairy Ashford Road (SE Corner)
Counter B	Memorial Drive Westbound at N. Dairy Ashford Road (NE Corner)
Counter C	N. Dairy Ashford Road Northbound at Perthshire Road (SE Corner)
Counter D	N. Dairy Ashford Road Southbound at Perthshire Road (SW Corner)
Counter E	Memorial Drive Westbound at White Wing Lane
Counter F	Memorial Drive Eastbound at Rancho Bauer Drive

#### About the Temporary Pedestrian/Bicycle Counters

The Houston-Galveston Area Council (H-GAC) has temporary counters (TRAFx Infrared Trail Counters: Generation III) that can be borrowed by local governments and transportation agencies to count the number of people using off-street pedestrian and bicycle facilities. Infrared technology is used to count the number of people passing the counter. The counters do not differentiate between pedestrians and bicyclists, but count the total number of users.

The Texas Transportation Institute (TTI) owns additional temporary counters that it deploys along off-street pedestrian and bicycle facilities statewide.

## Counter Locations



Counter	Location	Total Users	Average Daily Usage
1	Turkey Creek Trail at N. Dairy Ashford Road	1,255	97
2	Terry Hershey Hike and Bike Trail (West of Eldridge Parkway)	5,778	444
3	Terry Hershey Hike and Bike Trail (East of Eldridge Parkway)	11,827	910
4	N. Eldridge Parkway Southbound at Interstate 10 Eastbound Frontage Road	305	23
5	N. Eldridge Parkway Northbound at Interstate 10 Eastbound Frontage Road	3,759	289
6	N. Dairy Ashford Road Southbound at St. Mary's Lane (NW Corner)	935	72
7	N. Dairy Ashford Road Northbound at St. Mary's Lane (NE Corner)	478	41
A	Memorial Drive Eastbound at N. Dairy Ashford Road (SE Corner)	564	43
B	Memorial Drive Westbound at N. Dairy Ashford Road (NE Corner)	3,504	270
C	N. Dairy Ashford Road Northbound at Perthshire Road (SE Corner)	827	64
D	N. Dairy Ashford Road Southbound at Perthshire Road (SW Corner)	1,224	94
E	Memorial Drive Westbound at White Wing Lane	343	26
F	Memorial Drive Eastbound at Rancho Bauer Drive*	143	29

\*Counter F was deployed for a shorter period (Wednesday, November 11, 2015 – Sunday, November 15, 2015).

**Counter #1**

Turkey Creek Trail at N. Dairy Ashford Road

Location Information		
Location Name	Turkey Creek Trail at N. Dairy Ashford Road	
Location Description	Shared-Use Path along Turkey Creek (between ConocoPhillips and Shell: Woodcreek Complex)	
Jurisdiction	Energy Corridor District/City of Houston	
Agency Deployed	Energy Corridor District	
GPS Coordinates	29°46'11.7"N, 95°36'20"W	
Surrounding Land Uses	North	Office, Open Space (Addicks Reservoir)
	South	Office, Vacant Land
	East	Office
	West	Office
What object was device secured to?	Sign Post (Bikeway)	
Sidewalk Width	10'	
Buffer Width	N/A (Off-Road Shared-Use Path)	
Street Width	N/A (Off-Road Shared-Use Path)	
Parallel Parking	N/A (Off-Road Shared-Use Path)	
Landscaping or Trees	None	
Sidewalk Pavement Type	Concrete	
ADA Ramps	Yes	
Sidewalk Condition	Good	
Speed Limit	N/A (Off-Road Shared-Use Path)	
Street Lighting	N/A (Off-Road Shared-Use Path)	
Street Traffic Volume	N/A (Off-Road Shared-Use Path)	
Transit	Nearby (METRO Bus Stops on N. Dairy Ashford Road 550' west and 750' east)	
Shade	No	
Have counts been collected by H-GAC at this location before?	Yes (Counts were collected in May 2014. The counter was also deployed at this location in November 2014 and May 2015, but it did not collect data.)	

Trends
<ul style="list-style-type: none"> <li>• There tends to be higher usage on weekdays than during weekends.</li> <li>• On weekdays, usage peaks midday (11:00 a.m. – 1:00 p.m.). There is a less pronounced increase in usage in the early morning (6:00 a.m. – 7:00 a.m.).</li> <li>• On weekends, usage peaks in the late morning (10:00 a.m. – 12:00 p.m.).</li> <li>• Rain seems to influence usage. The rainiest day (Saturday, November 7: 0.3 inches of rain) had the least usage.</li> <li>• Average daily usage increased 47% between May 2014 (66 users/day) and November 2015 (97 users/day).</li> </ul>

**Location Information: Map**



**Location Information: Photos**



Image 1: Shared-Use Path along Turkey Creek Facing North

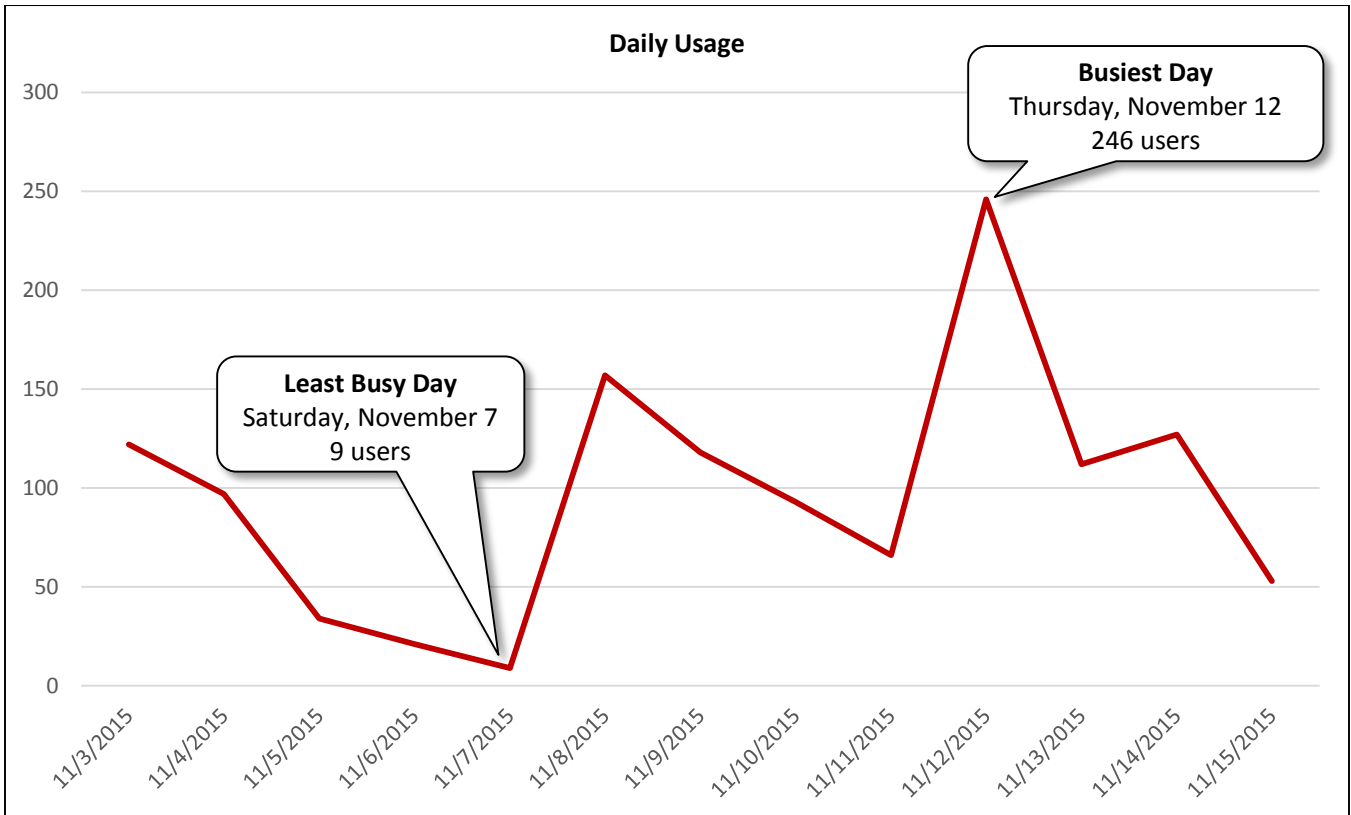


Image 2: Shared-Use Path along Turkey Creek Facing South

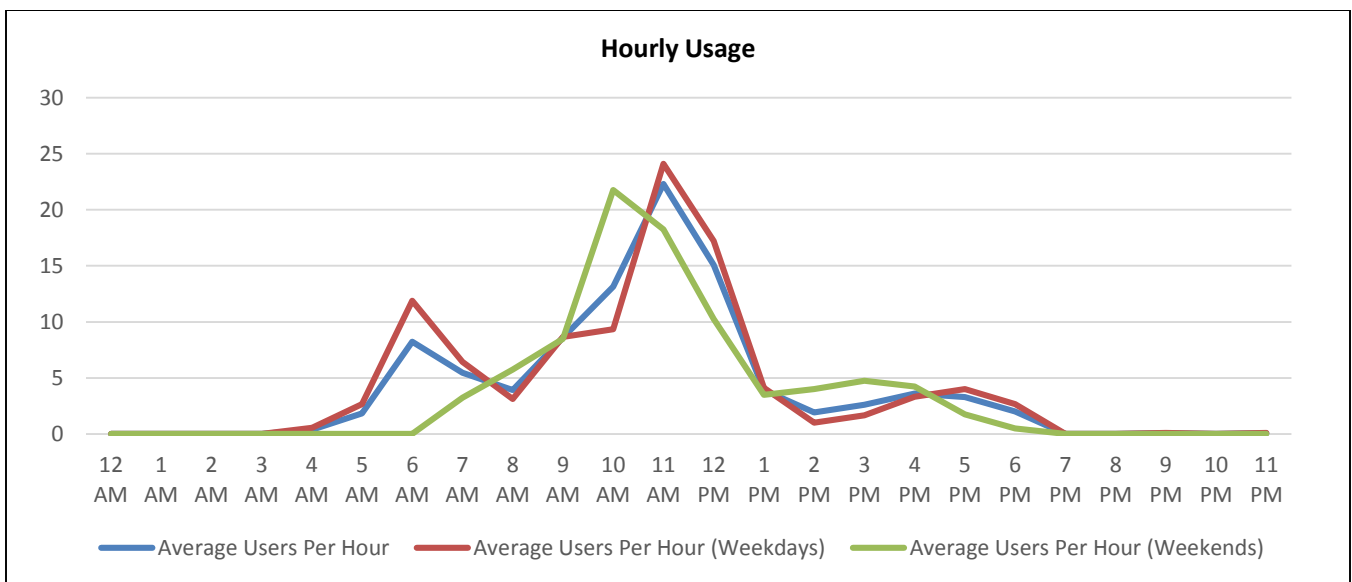
Daily Usage				
Date	Users	Select Weather Data*		
		High Temperature (°F)	Low Temperature (°F)	Precipitation (inches)
Tuesday, November 3, 2015	122	80	57	0
Wednesday, November 4, 2015	97	81	64	0
Thursday, November 5, 2015	34	86	72	0
Friday, November 6, 2015	21	84	69	0.01
Saturday, November 7, 2015	9	75	55	0.3
Sunday, November 8, 2015	157	73	54	0
Monday, November 9, 2015	118	75	53	0
Tuesday, November 10, 2015	93	75	57	0
Wednesday, November 11, 2015	66	84	64	0.11
Thursday, November 12, 2015	246	73	60	0
Friday, November 13, 2015	112	69	59	0
Saturday, November 14, 2015	127	70	55	0
Sunday, November 15, 2015	53	75	55	0

<b>Total</b>	1,255
<b>Average Daily Usage</b>	97
<b>Average Daily Usage (Weekday)</b>	101
<b>Average Daily Usage (Weekend)</b>	87

\*Weather conditions recorded at KSGR.

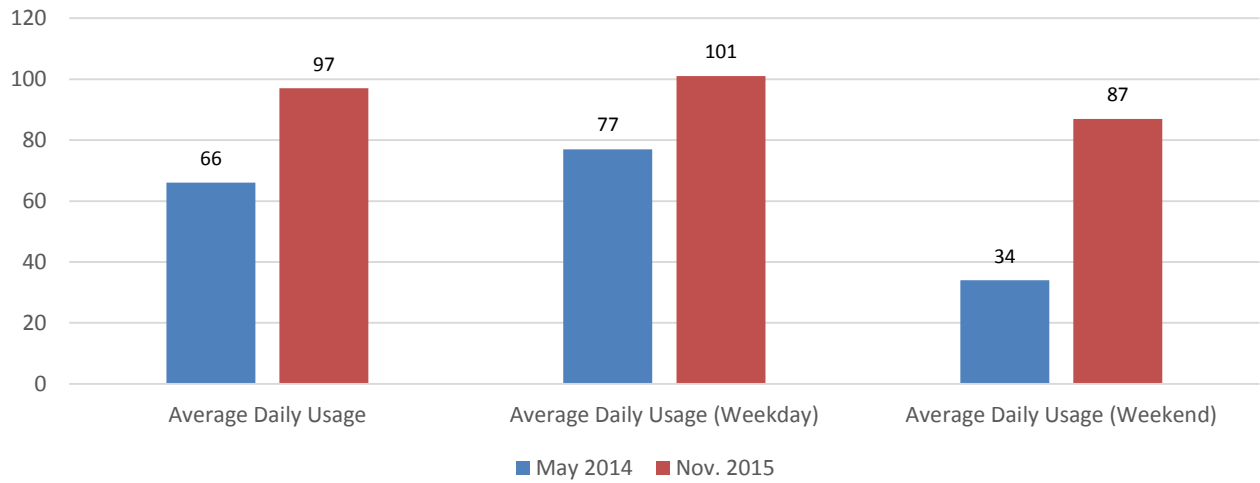


Hourly Usage			
Time of Day	Average Users Per Hour	Average Users Per Hour (Weekdays)	Average Users Per Hour (Weekends)
12:00 a.m.	0.0	0.0	0.0
1:00 a.m.	0.0	0.0	0.0
2:00 a.m.	0.0	0.0	0.0
3:00 a.m.	0.0	0.0	0.0
4:00 a.m.	0.4	0.6	0.0
5:00 a.m.	1.8	2.7	0.0
6:00 a.m.	8.2	11.9	0.0
7:00 a.m.	5.5	6.4	3.3
8:00 a.m.	3.9	3.1	5.8
9:00 a.m.	8.6	8.7	8.5
10:00 a.m.	13.2	9.3	21.8
11:00 a.m.	22.3	24.1	18.3
12:00 p.m.	15.1	17.2	10.3
1:00 p.m.	3.9	4.1	3.5
2:00 p.m.	1.9	1.0	4.0
3:00 p.m.	2.6	1.7	4.8
4:00 p.m.	3.6	3.3	4.3
5:00 p.m.	3.3	4.0	1.8
6:00 p.m.	2.0	2.7	0.5
7:00 p.m.	0.0	0.0	0.0
8:00 p.m.	0.0	0.0	0.0
9:00 p.m.	0.1	0.1	0.0
10:00 p.m.	0.0	0.0	0.0
11:00 p.m.	0.1	0.1	0.0

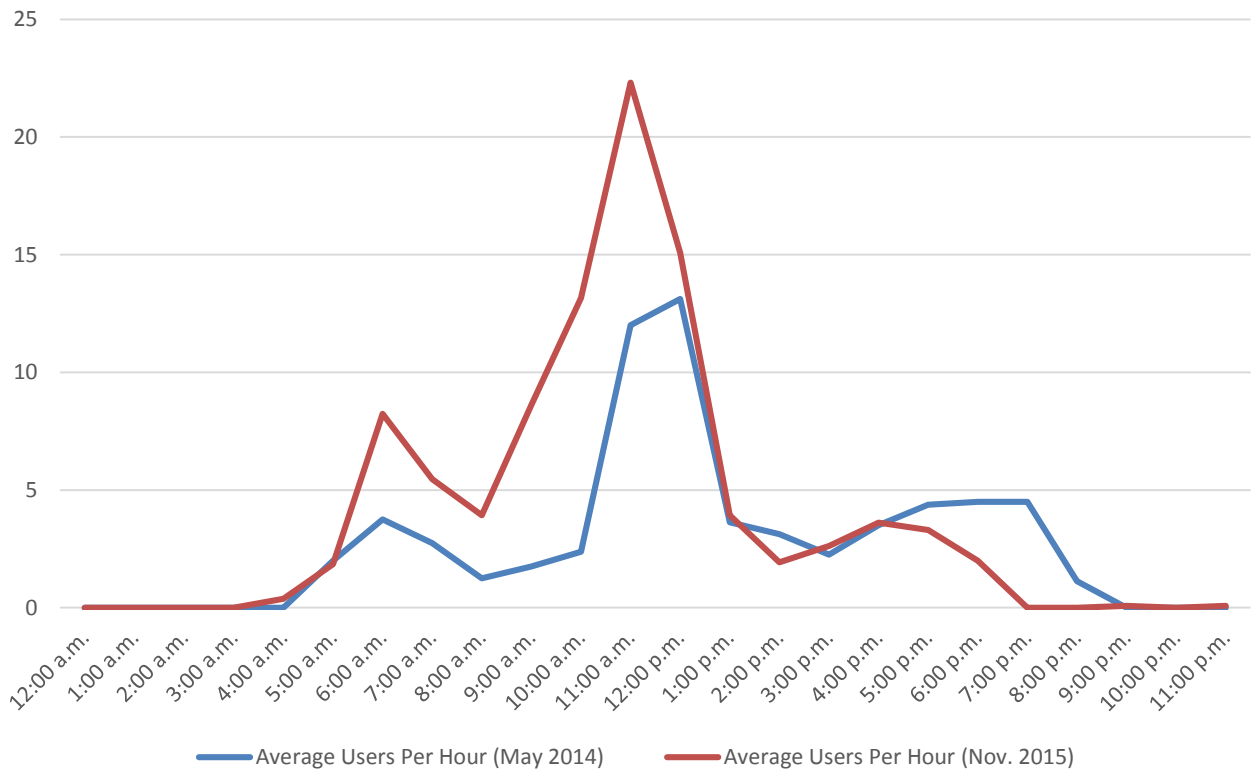


## Historical Comparison

### Comparison: Daily Usage



### Comparison: Hourly Usage



**Counter #2**

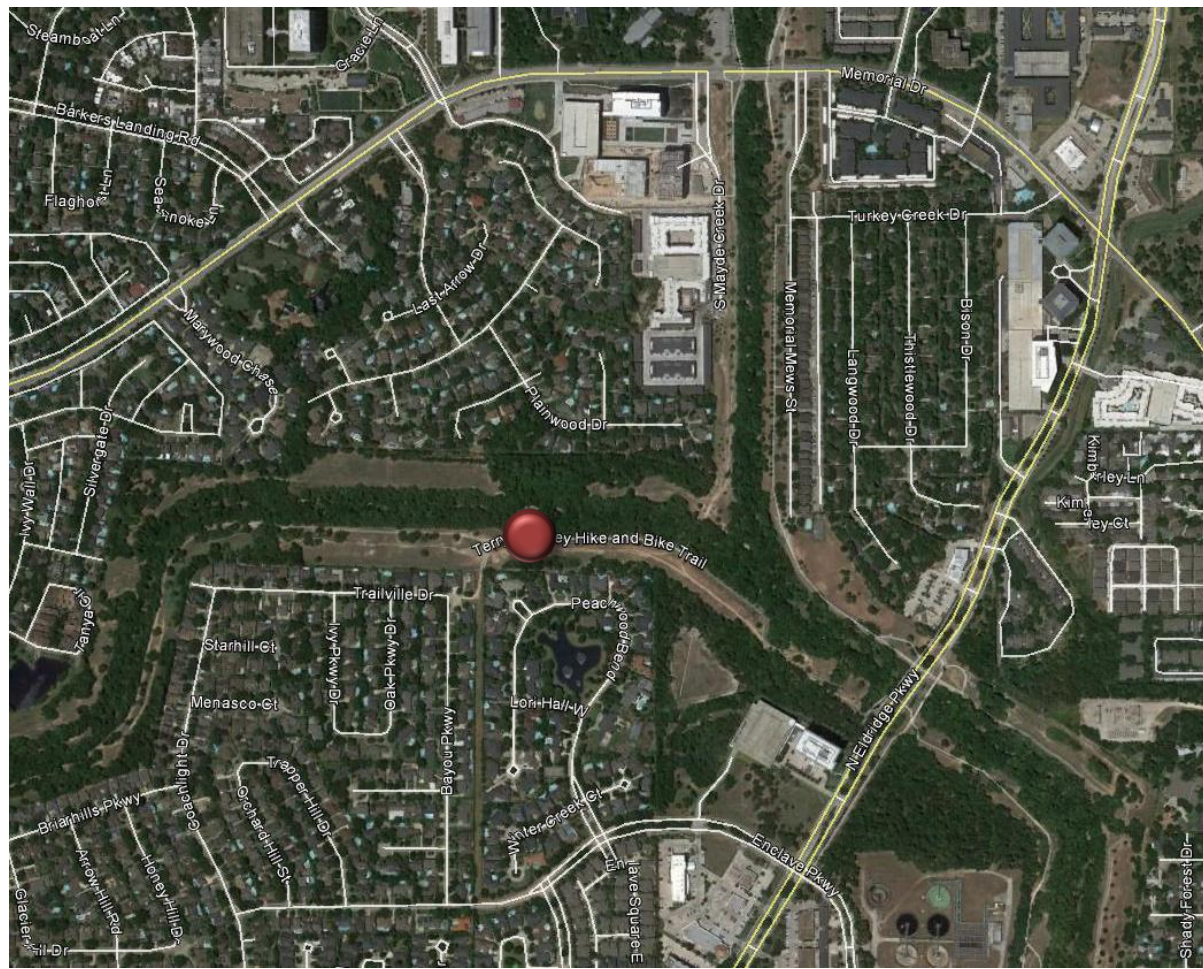
Terry Hershey Hike and Bike Trail (West of Eldridge Parkway)

Location Information		
Location Name	Terry Hershey Hike and Bike Trail (West of Eldridge Parkway)	
Location Description	Terry Hershey Hike and Bike Trail: East of Intersection of Bayou Parkway and Trailville Drive	
Jurisdiction	Energy Corridor District/City of Houston	
Agency Deployed	Energy Corridor District	
GPS Coordinates	29°46'16.25"N, 95°37'13.5"W	
Surrounding Land Uses	North	Single-Family Residential
	South	Single-Family Residential
	East	Terry Hershey Park
	West	Terry Hershey Park
What object was device secured to?	Oak Tree	
Sidewalk Width	8'	
Buffer Width	N/A (Off-Road Shared-Use Path)	
Street Width	N/A (Off-Road Shared-Use Path)	
Parallel Parking	N/A (Off-Road Shared-Use Path)	
Landscaping or Trees	Yes	
Sidewalk Pavement Type	Asphalt	
ADA Ramps	None	
Sidewalk Condition	Fair (Some Major Cracks)	
Speed Limit	N/A (Off-Road Shared-Use Path)	
Street Lighting	N/A (Off-Road Shared-Use Path)	
Street Traffic Volume	N/A (Off-Road Shared-Use Path)	
Transit	N/A (Off-Road Shared-Use Path)	
Shade	Yes (Some Trees)	
Have counts been collected by H-GAC at this location before?	Yes (Counts were collected in May 2014, November 2014, and May 2015)	

Trends
<ul style="list-style-type: none"> <li>• There tends to be much higher usage during weekends than on weekdays.</li> <li>• On weekdays, usage is highest in the evening (4:00 p.m. – 7:00 p.m.). There is a less pronounced increase in usage in the morning (7:00 a.m. – 9:00 a.m.) and midday (11:00 a.m. – 1:00 p.m.).</li> <li>• On weekends, usage peaks in the morning (7:00 a.m. – 9:00 a.m.). There is a less pronounced increase in usage during the late afternoon (4:00 p.m. – 5:00 p.m.).</li> <li>• Average daily usage increased 60% between November 2014 (277 users/day) and November 2015 (444 users/day).</li> </ul>



**Location Information: Map**



**Location Information: Photos**

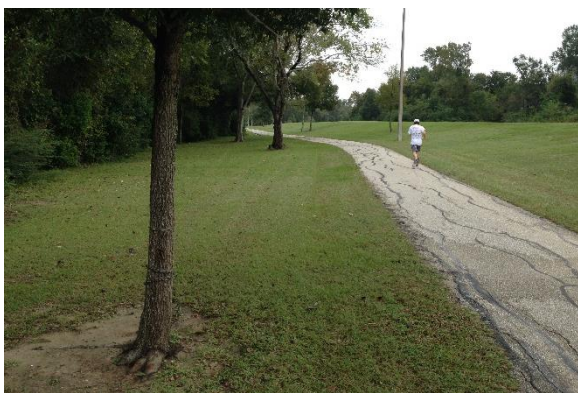


Image 3: Terry Hershey Hike and Bike Trail Facing East

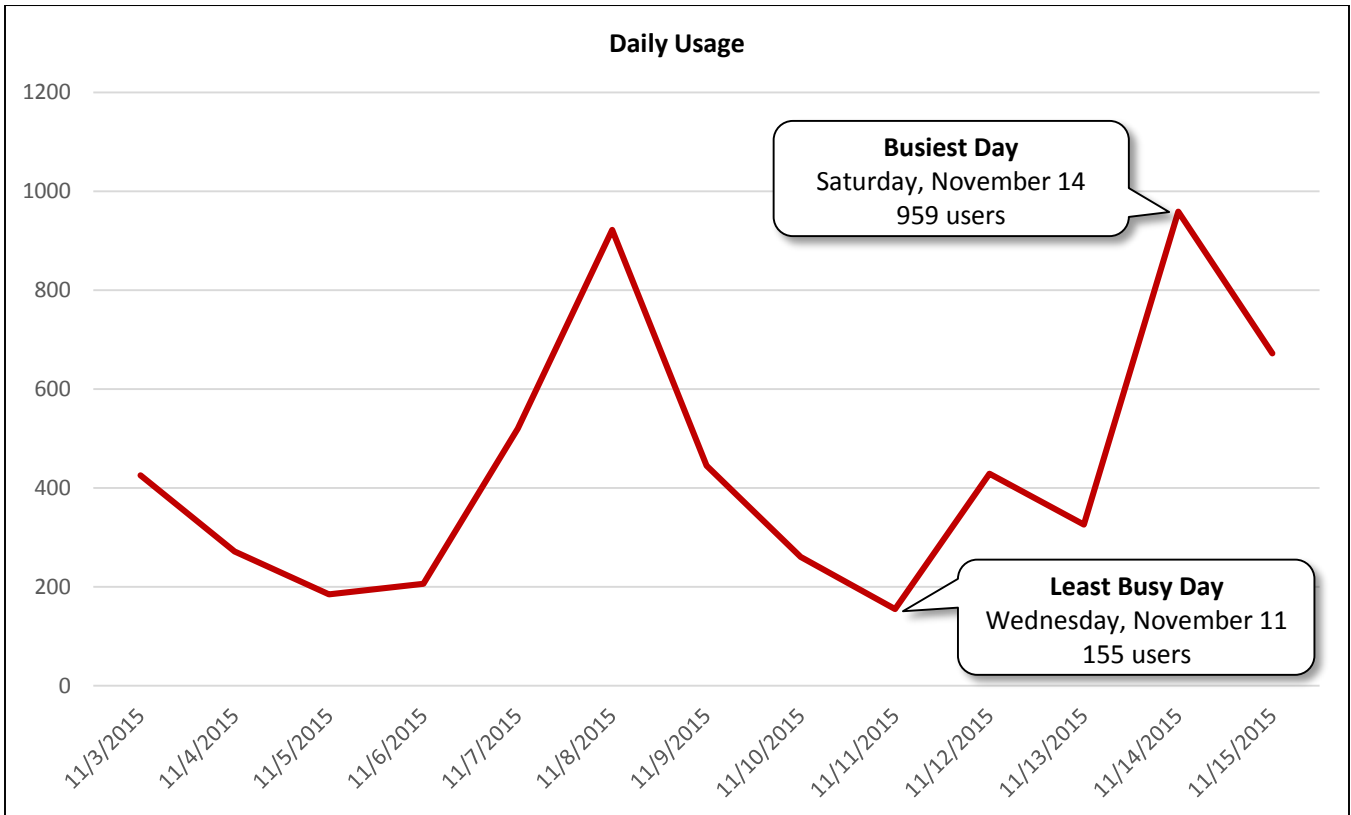


Image 4: Terry Hershey Hike and Bike Trail Facing West

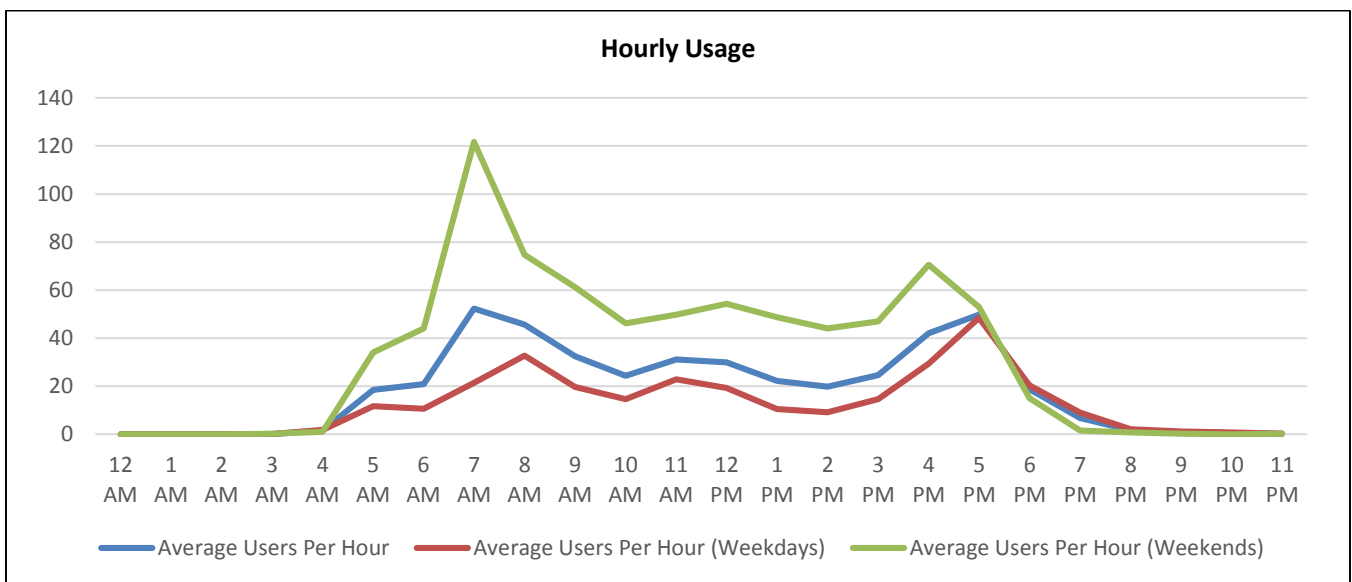
Daily Usage				
Date	Users	Select Weather Data*		
		High Temperature (°F)	Low Temperature (°F)	Precipitation (inches)
Tuesday, November 3, 2015	426	80	57	0
Wednesday, November 4, 2015	272	81	64	0
Thursday, November 5, 2015	185	86	72	0
Friday, November 6, 2015	206	84	69	0.01
Saturday, November 7, 2015	520	75	55	0.3
Sunday, November 8, 2015	922	73	54	0
Monday, November 9, 2015	445	75	53	0
Tuesday, November 10, 2015	261	75	57	0
Wednesday, November 11, 2015	155	84	64	0.11
Thursday, November 12, 2015	429	73	60	0
Friday, November 13, 2015	326	69	59	0
Saturday, November 14, 2015	959	70	55	0
Sunday, November 15, 2015	672	75	55	0

<b>Total</b>	5,778
<b>Average Daily Usage</b>	444
<b>Average Daily Usage (Weekday)</b>	301
<b>Average Daily Usage (Weekend)</b>	768

\*Weather conditions recorded at KSGR.

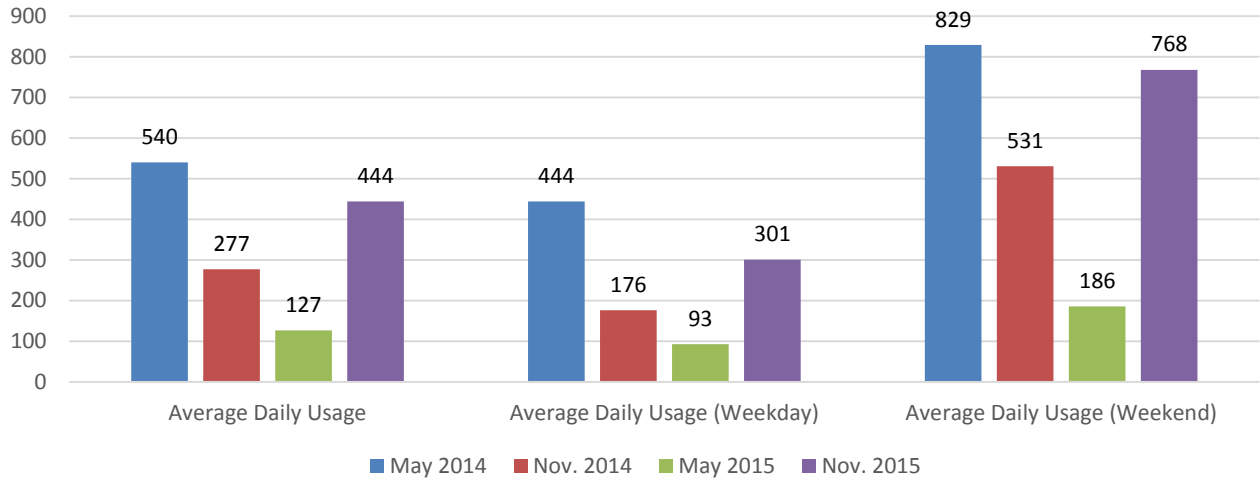


Hourly Usage			
Time of Day	Average Users Per Hour	Average Users Per Hour (Weekdays)	Average Users Per Hour (Weekends)
12:00 a.m.	0.0	0.0	0.0
1:00 a.m.	0.0	0.0	0.0
2:00 a.m.	0.0	0.0	0.0
3:00 a.m.	0.2	0.1	0.3
4:00 a.m.	1.5	1.8	1.0
5:00 a.m.	18.5	11.7	34.0
6:00 a.m.	20.9	10.7	44.0
7:00 a.m.	52.3	21.4	121.8
8:00 a.m.	45.7	32.8	74.8
9:00 a.m.	32.5	19.7	61.3
10:00 a.m.	24.3	14.6	46.3
11:00 a.m.	31.2	22.9	49.8
12:00 p.m.	30.0	19.2	54.3
1:00 p.m.	22.2	10.4	48.8
2:00 p.m.	19.8	9.1	44.0
3:00 p.m.	24.6	14.7	47.0
4:00 p.m.	42.1	29.4	70.5
5:00 p.m.	49.8	48.4	53.0
6:00 p.m.	18.7	20.3	15.0
7:00 p.m.	6.7	9.0	1.5
8:00 p.m.	1.7	2.1	0.8
9:00 p.m.	0.9	1.2	0.3
10:00 p.m.	0.5	0.8	0.0
11:00 p.m.	0.2	0.2	0.3

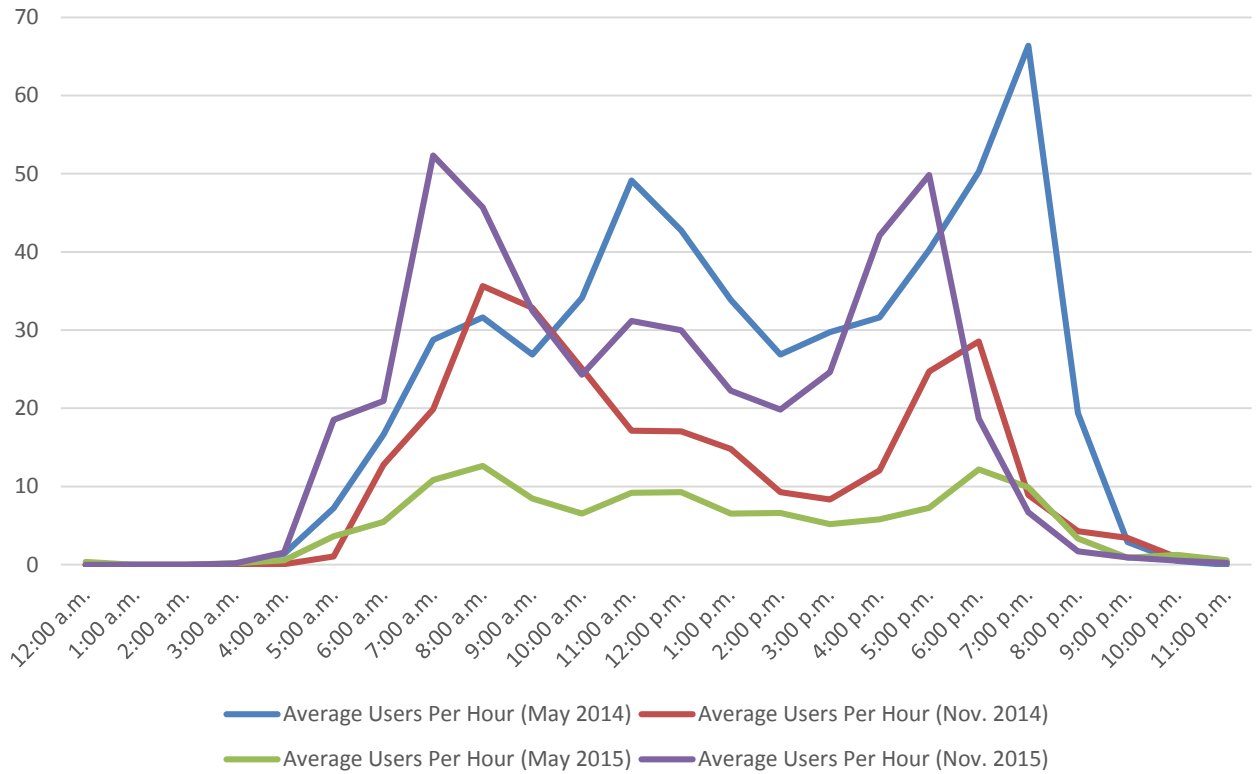


## Historical Comparison

### Comparison: Daily Usage



### Comparison: Average Usage Per Hour



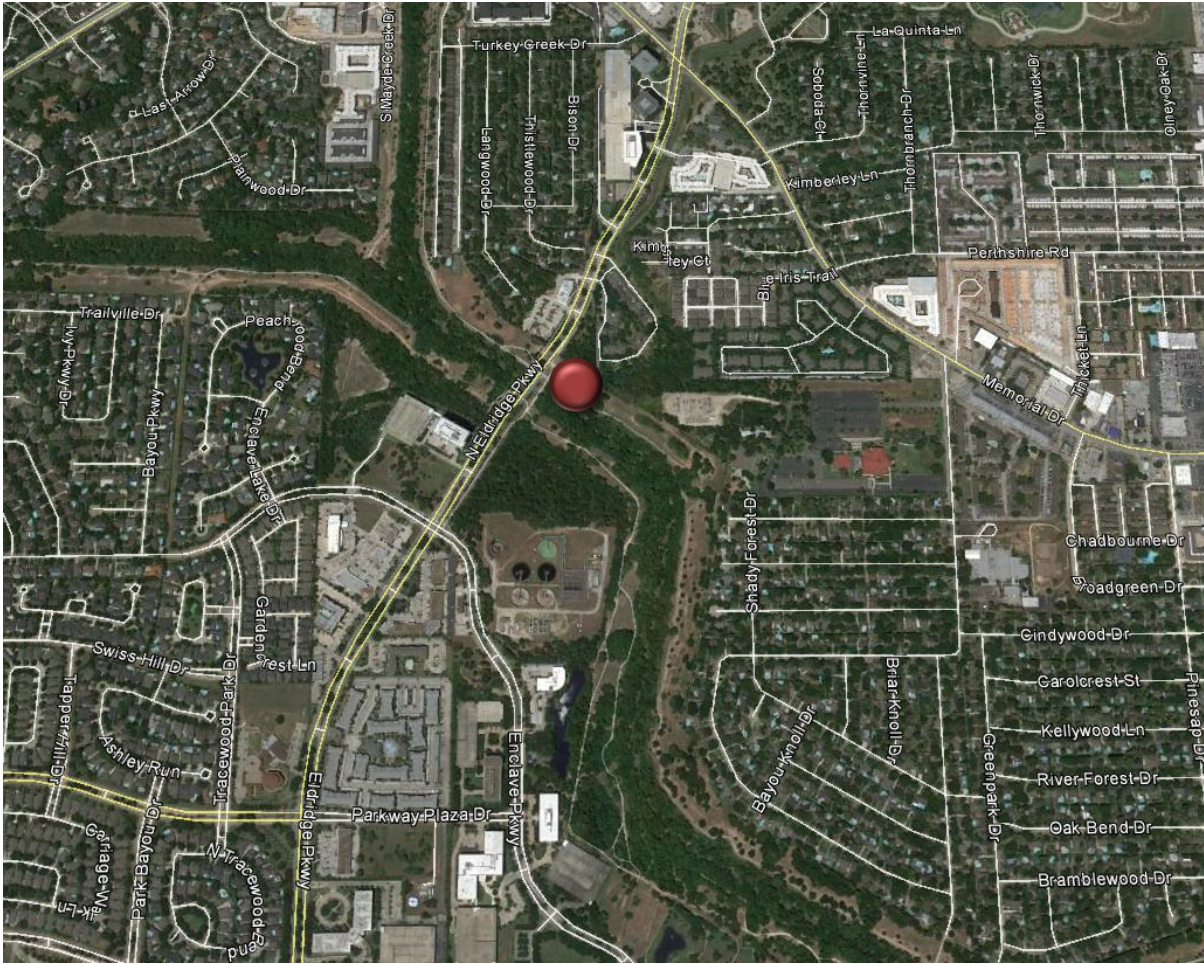
**Counter #3**

Terry Hershey Hike and Bike Trail (East of Eldridge Parkway)

Location Information		
Location Name	Terry Hershey Hike and Bike Trail (East of Eldridge Parkway)	
Location Description	Terry Hershey Hike and Bike Trail at Eldridge Parkway (East) near Turkey Creek Bridge	
Jurisdiction	Energy Corridor District/City of Houston	
Agency Deployed	Energy Corridor District	
GPS Coordinates	29°46'16.27"N, 95°37'13.79"W	
Surrounding Land Uses	North	Multi-Family Residential, Institutional (Kendall Neighborhood Library), Single-Family Residential
	South	Vacant Land, Office
	East	Terry Hershey Park, Institutional (Church)
	West	Terry Hershey Park, Office, Single-Family Residential
What object was device secured to?	Sign Post (Warning: Cyclists Must Yield to Pedestrians)	
Sidewalk Width	10'	
Buffer Width	N/A (Off-Road Shared-Use Path)	
Street Width	N/A (Off-Road Shared-Use Path)	
Parallel Parking	N/A (Off-Road Shared-Use Path)	
Landscaping or Trees	Yes	
Sidewalk Pavement Type	Asphalt	
ADA Ramps	Yes	
Sidewalk Condition	Good	
Speed Limit	N/A (Off-Road Shared-Use Path)	
Street Lighting	N/A (Off-Road Shared-Use Path)	
Street Traffic Volume	N/A (Off-Road Shared-Use Path)	
Transit	Nearby (METRO Bus Stop 300' North on Eldridge Parkway)	
Shade	Yes	
Have counts been collected by H-GAC at this location before?	Yes (Counts were collected in November 2014 and May 2015. The counter was also deployed at this location in May 2014, but it did not collect data.)	

Trends
<ul style="list-style-type: none"> <li>• There tends to be much higher usage during weekends than on weekdays.</li> <li>• On weekdays, usage peaks in the evening (4:00 p.m. – 6:00 p.m.). There is a less pronounced increase in usage in the morning (8:00 a.m. – 9:00 a.m.).</li> <li>• On weekends, usage generally increases as the day progresses, peaking in the late afternoon (3:00 p.m. – 5:00 p.m.).</li> <li>• Average daily usage increased 65% between November 2014 (551 users/day) and November 2015 (910 users/day).</li> </ul>

**Location Information: Map**



**Location Information: Photos**



Image 5: Terry Hershey Hike and Bike Trail Facing East

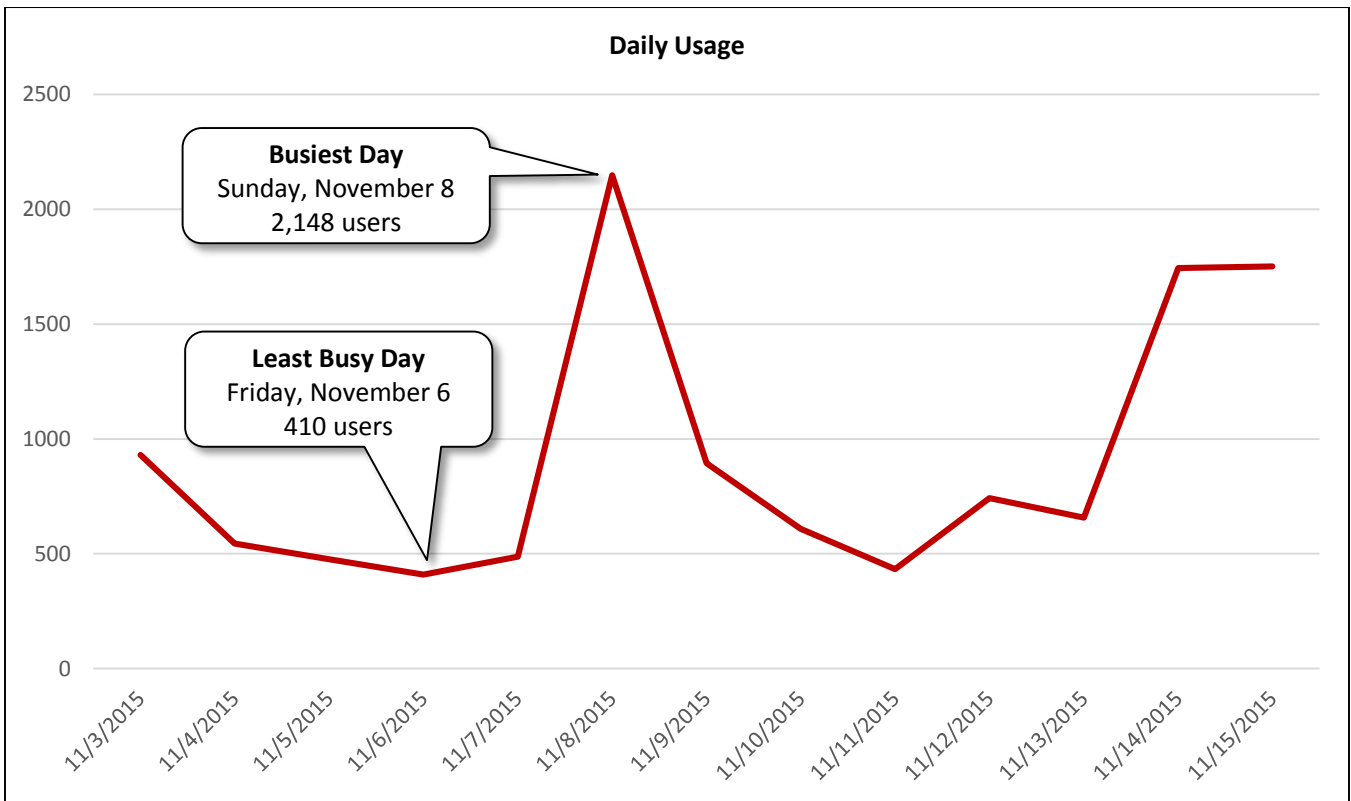


Image 6: Terry Hershey Hike and Bike Trail Facing West

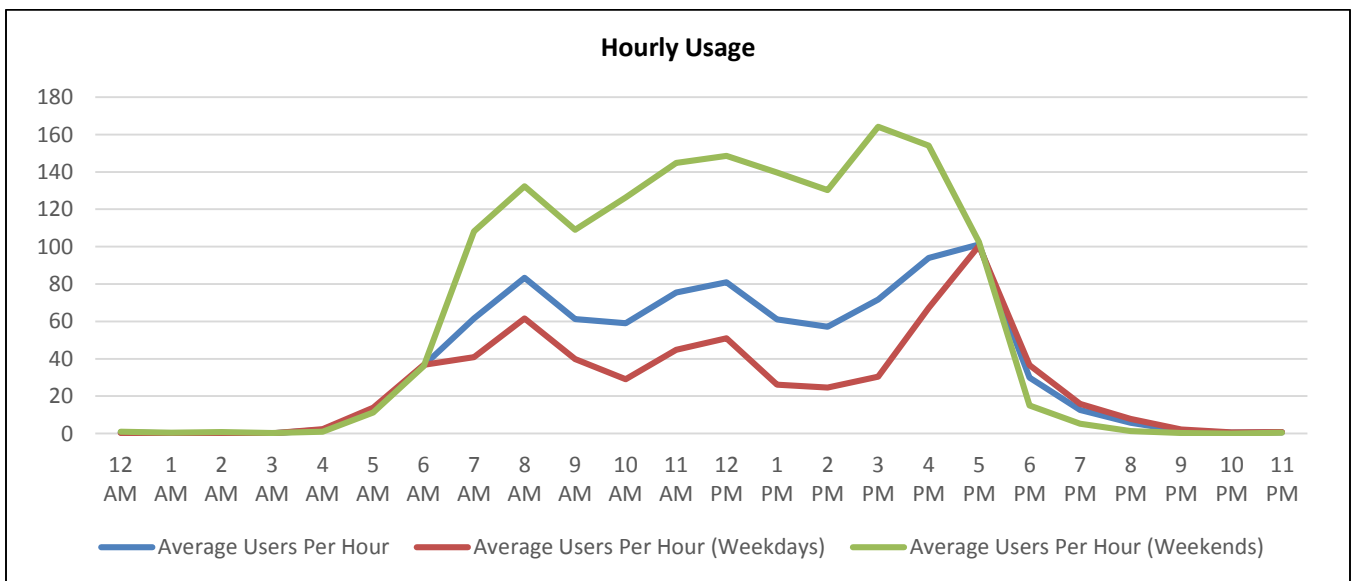
Daily Usage				
Date	Users	Select Weather Data*		
		High Temperature (°F)	Low Temperature (°F)	Precipitation (inches)
Tuesday, November 3, 2015	930	80	57	0
Wednesday, November 4, 2015	545	81	64	0
Thursday, November 5, 2015	476	86	72	0
Friday, November 6, 2015	410	84	69	0.01
Saturday, November 7, 2015	487	75	55	0.3
Sunday, November 8, 2015	2,148	73	54	0
Monday, November 9, 2015	895	75	53	0
Tuesday, November 10, 2015	608	75	57	0
Wednesday, November 11, 2015	433	84	64	0.11
Thursday, November 12, 2015	742	73	60	0
Friday, November 13, 2015	657	69	59	0
Saturday, November 14, 2015	1,745	70	55	0
Sunday, November 15, 2015	1,751	75	55	0

<b>Total</b>	11,827
<b>Average Daily Usage</b>	910
<b>Average Daily Usage (Weekday)</b>	633
<b>Average Daily Usage (Weekend)</b>	1,533

\*Weather conditions recorded at KSGR.



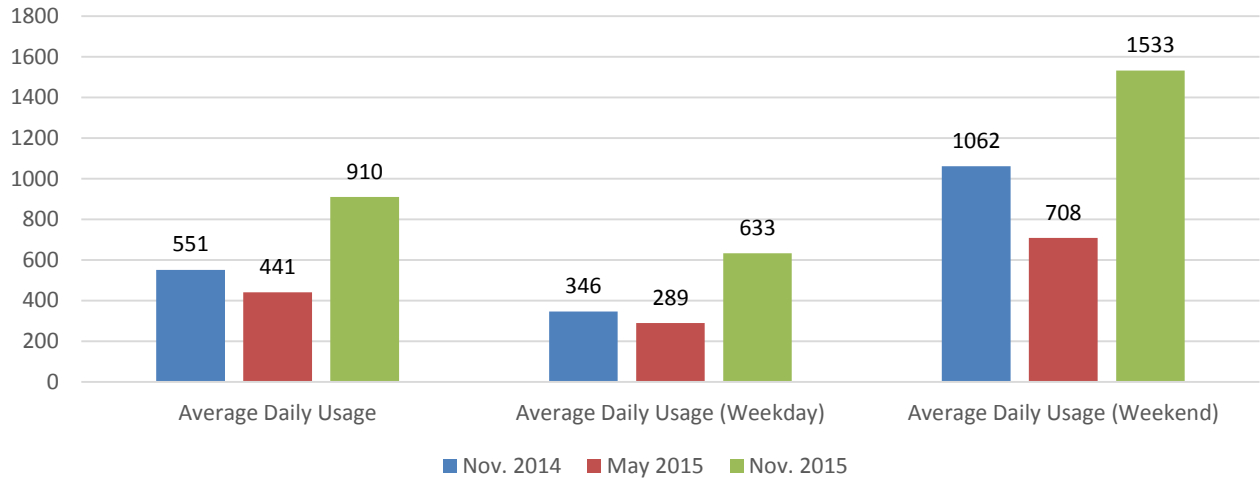
Hourly Usage			
Time of Day	Average Users Per Hour	Average Users Per Hour (Weekdays)	Average Users Per Hour (Weekends)
12:00 a.m.	0.5	0.3	1.0
1:00 a.m.	0.2	0.0	0.5
2:00 a.m.	0.2	0.0	0.8
3:00 a.m.	0.2	0.1	0.3
4:00 a.m.	1.9	2.3	1.0
5:00 a.m.	13.0	13.8	11.3
6:00 a.m.	36.5	36.7	36.0
7:00 a.m.	61.5	40.8	108.3
8:00 a.m.	83.3	61.6	132.3
9:00 a.m.	61.2	39.9	109.0
10:00 a.m.	59.0	29.1	126.3
11:00 a.m.	75.5	44.8	144.8
12:00 p.m.	81.0	51.0	148.5
1:00 p.m.	61.1	26.1	139.8
2:00 p.m.	57.1	24.6	130.3
3:00 p.m.	71.6	30.4	164.3
4:00 p.m.	93.9	67.2	154.0
5:00 p.m.	101.1	100.4	102.5
6:00 p.m.	29.9	36.6	15.0
7:00 p.m.	12.6	15.9	5.3
8:00 p.m.	5.8	7.8	1.3
9:00 p.m.	1.5	2.1	0.3
10:00 p.m.	0.5	0.7	0.0
11:00 p.m.	0.7	0.8	0.5



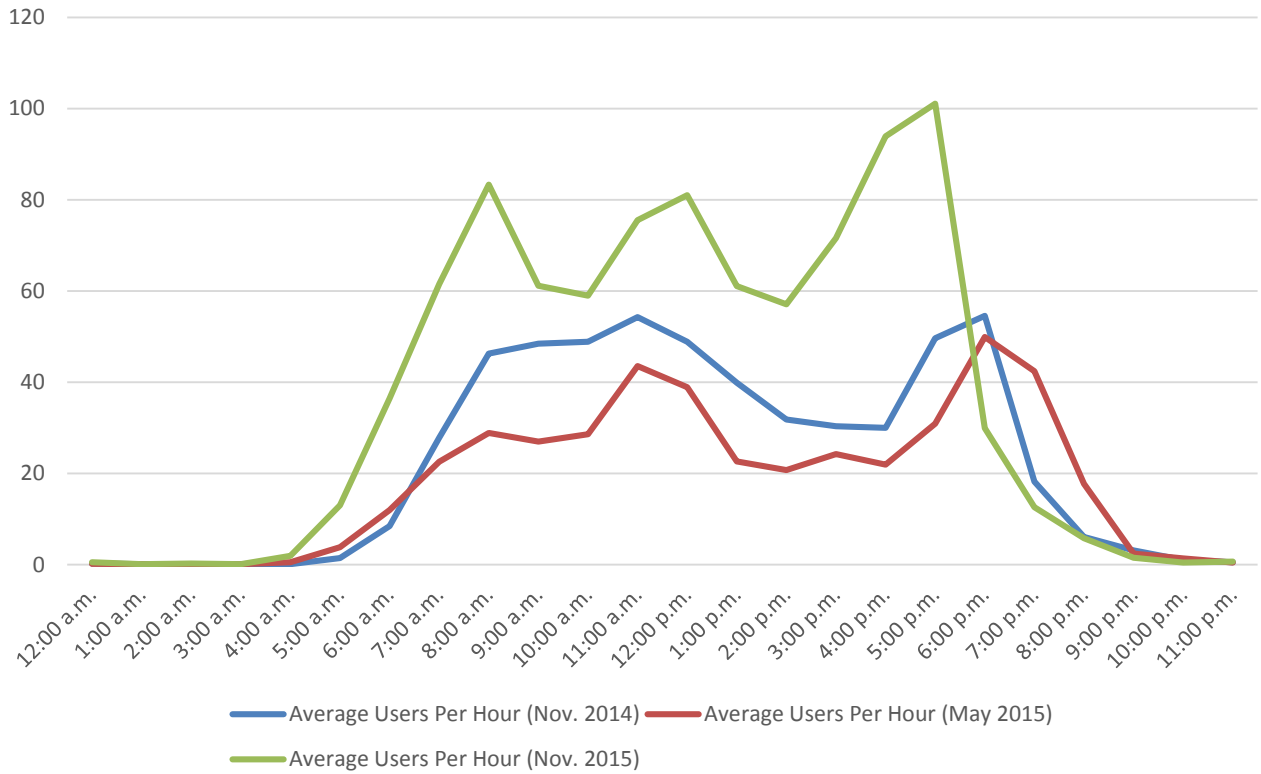


## Historical Comparison

### Comparison: Daily Usage



### Comparison: Hourly Usage



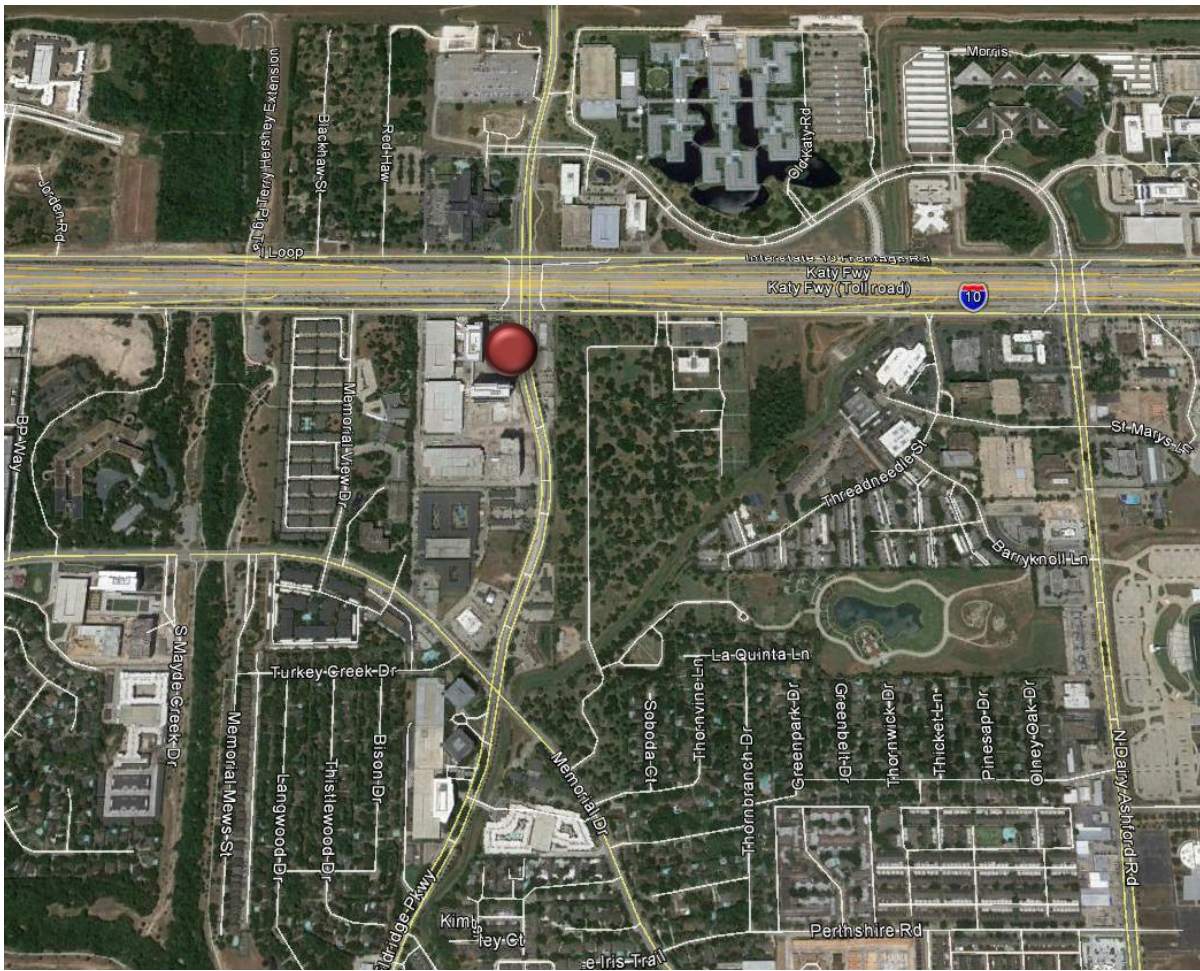
**Counter #4**

**N. Eldridge Parkway Southbound at Interstate 10 Eastbound Frontage Road**

Location Information		
Location Name	N. Eldridge Parkway Southbound at Interstate 10 Eastbound Frontage Road	
Location Description	Sidewalk along N. Eldridge Parkway South of Interstate 10 Eastbound Frontage Road in front of ConocoPhillips Campus (Under Construction)	
Jurisdiction	Energy Corridor District/City of Houston	
Agency Deployed	Energy Corridor District	
GPS Coordinates	29°47'2.2"N, 95°37'4.6"W	
Surrounding Land Uses	North	Interstate 10, Office
	South	Office (Under Construction), Commercial/Retail, Institutional (Cemetery)
	East	Commercial/Retail, Institutional (Cemetery)
	West	Office (Under Construction)
What object was device secured to?	Sign Post (No Parking)	
Sidewalk Width	9' (Concrete: 7' + Brick Pavers: 2')	
Buffer Width	None	
Street Width	Six-Lane Divided Roadway	
Parallel Parking	No	
Landscaping or Trees	Yes	
Sidewalk Pavement Type	Concrete and Brick Pavers	
ADA Ramps	Yes	
Sidewalk Condition	Good	
Speed Limit	35 miles per hour	
Street Lighting	Yes	
Street Traffic Volume	51,446 (850 N. Eldridge Parkway: 2015)	
Transit	No	
Shade	No	
Have counts been collected by H-GAC at this location before?	No	

Trends
<ul style="list-style-type: none"> <li>• There tends to be higher usage on weekdays than during weekends.</li> <li>• On weekdays, usage peaks in the mid-afternoon (2:00 p.m. – 4:00 p.m.).</li> <li>• On weekends, usage peaks in the morning (7:00 a.m. – 8:00 a.m.).</li> <li>• Rain seems to influence usage. The rainiest day (Saturday, November 7: 0.3 inches of rain) had the least usage.</li> </ul>

### Location Information: Map



### Location Information: Photos



Image 7: Sidewalk along N. Eldridge Parkway Facing North

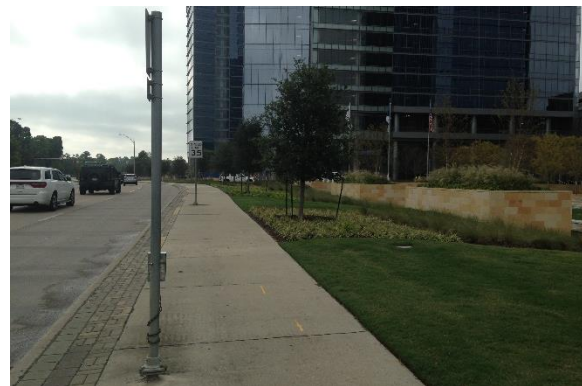
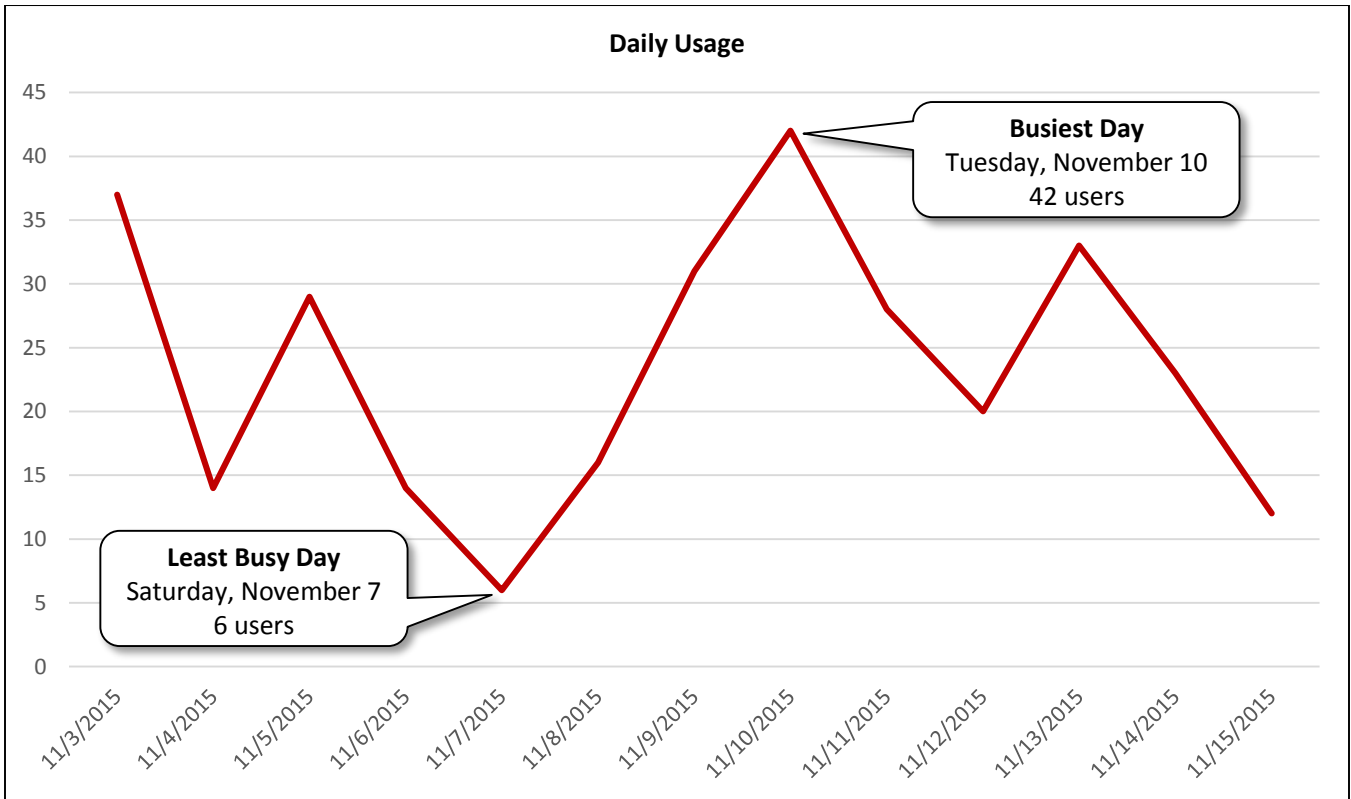


Image 8: Sidewalk along N. Eldridge Parkway Facing South

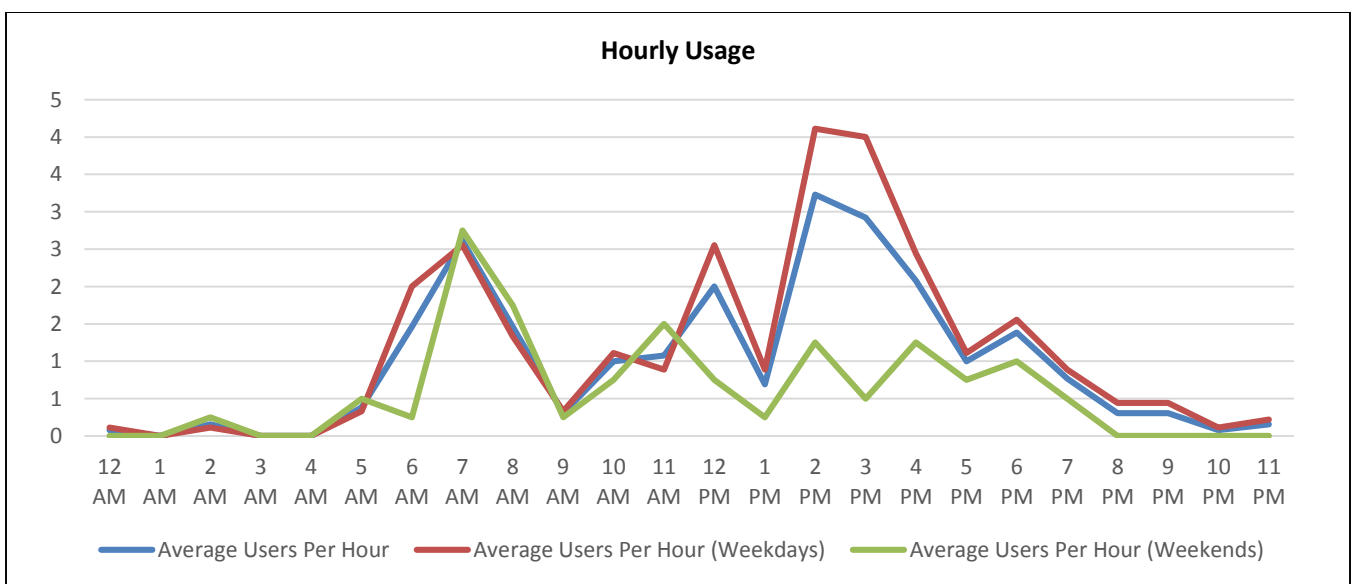
Daily Usage				
Date	Users	Select Weather Data*		
		High Temperature (°F)	Low Temperature (°F)	Precipitation (inches)
Tuesday, November 3, 2015	37	80	57	0
Wednesday, November 4, 2015	14	81	64	0
Thursday, November 5, 2015	29	86	72	0
Friday, November 6, 2015	14	84	69	0.01
Saturday, November 7, 2015	6	75	55	0.3
Sunday, November 8, 2015	16	73	54	0
Monday, November 9, 2015	31	75	53	0
Tuesday, November 10, 2015	42	75	57	0
Wednesday, November 11, 2015	28	84	64	0.11
Thursday, November 12, 2015	20	73	60	0
Friday, November 13, 2015	33	69	59	0
Saturday, November 14, 2015	23	70	55	0
Sunday, November 15, 2015	12	75	55	0

<b>Total</b>	305
<b>Average Daily Usage</b>	23
<b>Average Daily Usage (Weekday)</b>	28
<b>Average Daily Usage (Weekend)</b>	14

\*Weather conditions recorded at KSGR.



Hourly Usage			
Time of Day	Average Users Per Hour	Average Users Per Hour (Weekdays)	Average Users Per Hour (Weekends)
12:00 a.m.	0.1	0.1	0.0
1:00 a.m.	0.0	0.0	0.0
2:00 a.m.	0.2	0.1	0.3
3:00 a.m.	0.0	0.0	0.0
4:00 a.m.	0.0	0.0	0.0
5:00 a.m.	0.4	0.3	0.5
6:00 a.m.	1.5	2.0	0.3
7:00 a.m.	2.6	2.6	2.8
8:00 a.m.	1.5	1.3	1.8
9:00 a.m.	0.3	0.3	0.3
10:00 a.m.	1.0	1.1	0.8
11:00 a.m.	1.1	0.9	1.5
12:00 p.m.	2.0	2.6	0.8
1:00 p.m.	0.7	0.9	0.3
2:00 p.m.	3.2	4.1	1.3
3:00 p.m.	2.9	4.0	0.5
4:00 p.m.	2.1	2.4	1.3
5:00 p.m.	1.0	1.1	0.8
6:00 p.m.	1.4	1.6	1.0
7:00 p.m.	0.8	0.9	0.5
8:00 p.m.	0.3	0.4	0.0
9:00 p.m.	0.3	0.4	0.0
10:00 p.m.	0.1	0.1	0.0
11:00 p.m.	0.2	0.2	0.0



**Counter #5****N. Eldridge Parkway Northbound at Interstate 10 Eastbound Frontage Road**

Location Information		
Location Name	N. Eldridge Parkway Northbound at Interstate 10 Eastbound Frontage Road	
Location Description	Sidewalk along N. Eldridge Parkway South of Interstate 10 Eastbound Frontage Road in front of Valero Gas Station	
Jurisdiction	Energy Corridor District/City of Houston	
Agency Deployed	Energy Corridor District	
GPS Coordinates	29°47'2.9"N, 95°37'3.4"W	
Surrounding Land Uses	North	Interstate 10, Office
	South	Office (Under Construction), Commercial/Retail, Institutional (Cemetery)
	East	Commercial/Retail, Institutional (Cemetery)
	West	Office (Under Construction)
What object was device secured to?	Sign Post (Right Lane Must Turn Right)	
Sidewalk Width	5'	
Buffer Width	3'	
Street Width	Six-Lane Divided Roadway	
Parallel Parking	No	
Landscaping or Trees	Yes	
Sidewalk Pavement Type	Concrete	
ADA Ramps	Yes	
Sidewalk Condition	Good	
Speed Limit	35 miles per hour	
Street Lighting	Yes	
Street Traffic Volume	51,446 (850 N. Eldridge Parkway: 2015)	
Transit	No	
Shade	No	
Have counts been collected by H-GAC at this location before?	No	

Trends
<ul style="list-style-type: none"> <li>Usage at this location was significantly higher than usage recorded by Counter #4, which was placed directly across N. Eldridge Parkway. This counter may have been incorrectly positioned. It may have counted vehicles driving in the parking lot of the adjacent gas station, inflating counts.</li> <li>There tends to be higher usage on weekdays than during weekends.</li> <li>On weekdays, usage remains relatively steady between 10:00 a.m. and 6:00 p.m.</li> <li>On weekends, usage peaks mid-day (12:00 p.m. – 2:00 p.m.).</li> </ul>

**Location Information: Map**



**Location Information: Photos**



Image 9: Sidewalk along N. Eldridge Parkway Facing North

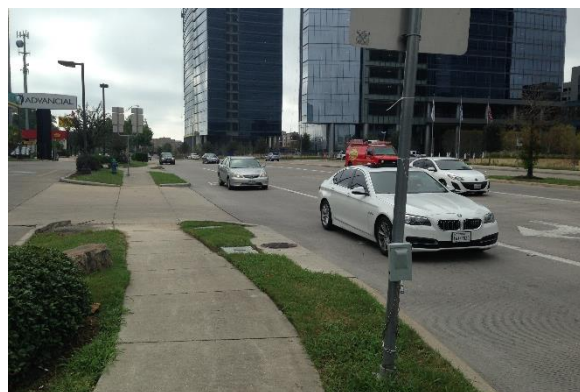
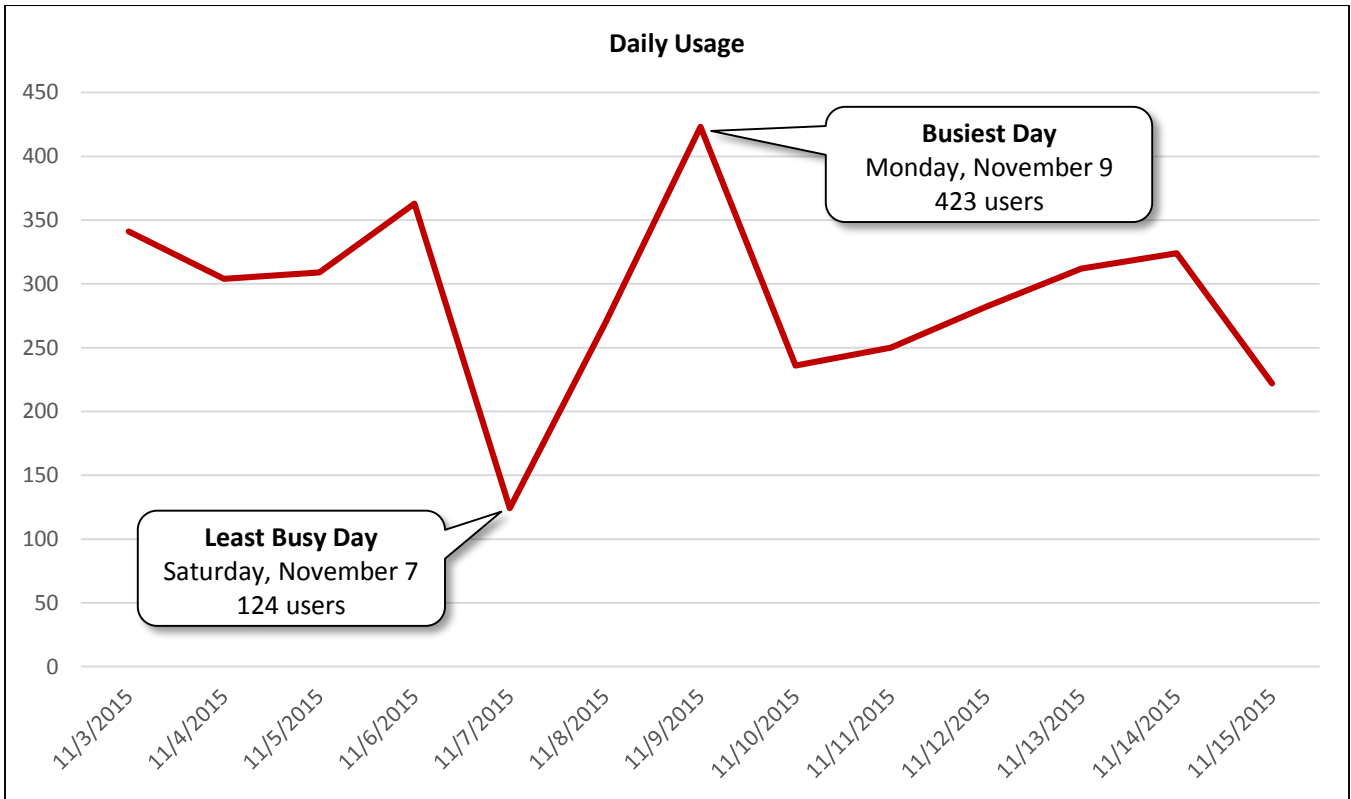


Image 10: Sidewalk along N. Eldridge Parkway Facing South

Daily Usage				
Date	Users	Select Weather Data*		
		High Temperature (°F)	Low Temperature (°F)	Precipitation (inches)
Tuesday, November 3, 2015	341	80	57	0
Wednesday, November 4, 2015	304	81	64	0
Thursday, November 5, 2015	309	86	72	0
Friday, November 6, 2015	363	84	69	0.01
Saturday, November 7, 2015	124	75	55	0.3
Sunday, November 8, 2015	269	73	54	0
Monday, November 9, 2015	423	75	53	0
Tuesday, November 10, 2015	236	75	57	0
Wednesday, November 11, 2015	250	84	64	0.11
Thursday, November 12, 2015	282	73	60	0
Friday, November 13, 2015	312	69	59	0
Saturday, November 14, 2015	324	70	55	0
Sunday, November 15, 2015	222	75	55	0

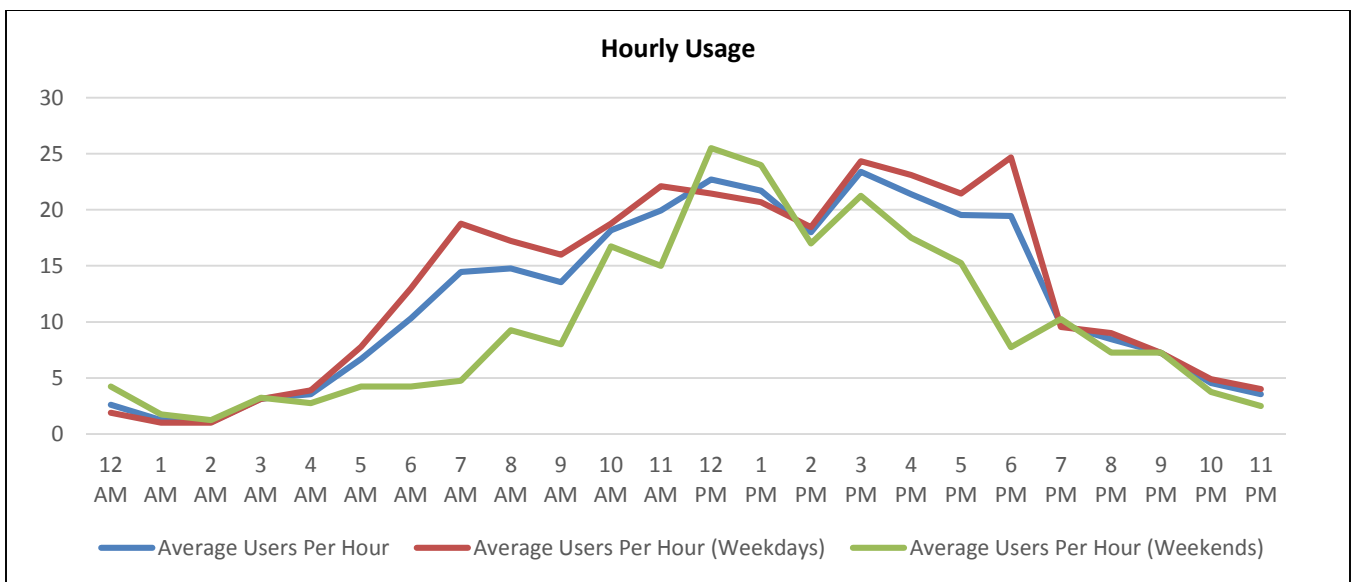
<b>Total</b>	3,759
<b>Average Daily Usage</b>	289
<b>Average Daily Usage (Weekday)</b>	313
<b>Average Daily Usage (Weekend)</b>	235

\*Weather conditions recorded at KSGR.





Hourly Usage			
Time of Day	Average Users Per Hour	Average Users Per Hour (Weekdays)	Average Users Per Hour (Weekends)
12:00 a.m.	2.6	1.9	4.3
1:00 a.m.	1.2	1.0	1.8
2:00 a.m.	1.1	1.0	1.3
3:00 a.m.	3.2	3.1	3.3
4:00 a.m.	3.5	3.9	2.8
5:00 a.m.	6.7	7.8	4.3
6:00 a.m.	10.3	13.0	4.3
7:00 a.m.	14.5	18.8	4.8
8:00 a.m.	14.8	17.2	9.3
9:00 a.m.	13.5	16.0	8.0
10:00 a.m.	18.2	18.8	16.8
11:00 a.m.	19.9	22.1	15.0
12:00 p.m.	22.7	21.4	25.5
1:00 p.m.	21.7	20.7	24.0
2:00 p.m.	18.0	18.4	17.0
3:00 p.m.	23.4	24.3	21.3
4:00 p.m.	21.4	23.1	17.5
5:00 p.m.	19.5	21.4	15.3
6:00 p.m.	19.5	24.7	7.8
7:00 p.m.	9.8	9.6	10.3
8:00 p.m.	8.5	9.0	7.3
9:00 p.m.	7.2	7.2	7.3
10:00 p.m.	4.5	4.9	3.8
11:00 p.m.	3.5	4.0	2.5



**Counter #6**

N. Dairy Ashford Road Southbound at St. Mary's Lane (NW Corner)

Location Information	
Location Name	N. Dairy Ashford Road Southbound at St. Mary's Lane (NW Corner)
Location Description	Sidewalk along N. Dairy Ashford Road Southbound at St. Mary's Lane (NW Corner)
Jurisdiction	Energy Corridor District/City of Houston
Agency Deployed	Energy Corridor District
GPS Coordinates	29°46'58.2"N, 95°36'23.8"W
Surrounding Land Uses	North   Hotel, Commercial/Retail
	South   Office, Commercial/Retail
	East   Commercial/Retail, Multi-Family Residential (Under Construction)
	West   Office
What object was device secured to?	Sign Post (No Parking)
Sidewalk Width	4'
Buffer Width	4'
Street Width	Six-Lane Divided Roadway
Parallel Parking	No
Landscaping or Trees	Yes
Sidewalk Pavement Type	Concrete
ADA Ramps	Yes
Sidewalk Condition	Good
Speed Limit	35 miles per hour
Street Lighting	Yes
Street Traffic Volume	49,356 (1009 N. Dairy Ashford Road: 2015)
Transit	Nearby (METRO Bus Stop 350 feet south on St. Mary's Lane near N. Dairy Ashford Road)
Shade	No
Have counts been collected by H-GAC at this location before?	No

Trends
<ul style="list-style-type: none"> <li>• There tends to be much higher usage on weekdays than during weekends.</li> <li>• On weekdays, usage peaks midday (12:00 p.m. – 1:00 p.m.).</li> <li>• On weekends, usage is highest in the morning and early afternoon (8:00 a.m. – 1:00 p.m.).</li> <li>• Rain seems to influence usage. The rainiest day (Saturday, November 7: 0.3 inches of rain) had the least usage.</li> </ul>

**Location Information: Map**



**Location Information: Photos**



Image 11: Sidewalk along N. Dairy Ashford Road Facing North

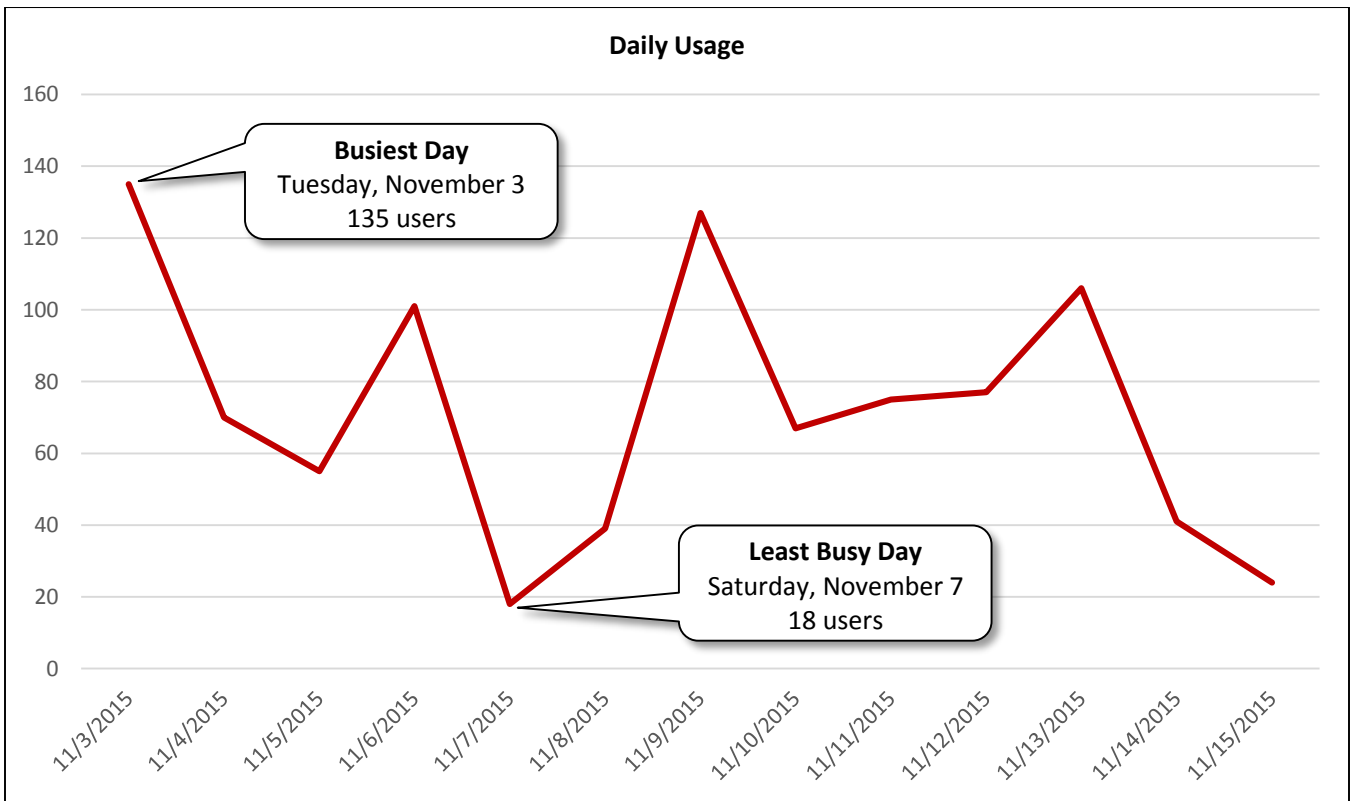


Image 12: Sidewalk along N. Dairy Ashford Road Facing South

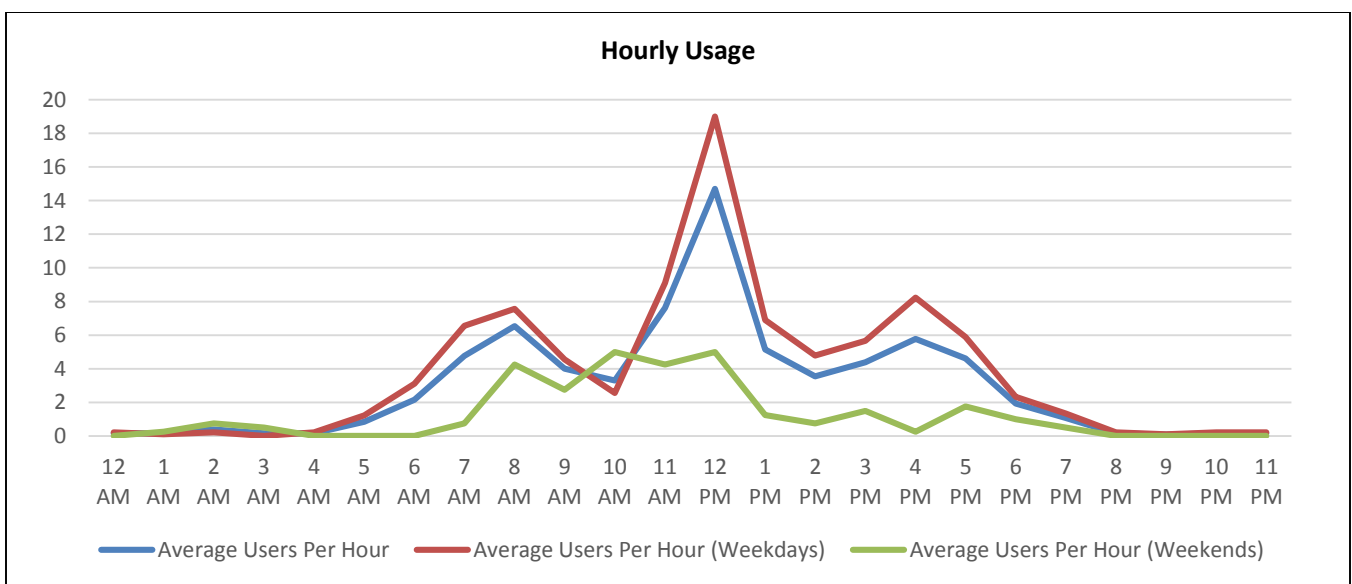
Daily Usage				
Date	Users	Select Weather Data*		
		High Temperature (°F)	Low Temperature (°F)	Precipitation (inches)
Tuesday, November 3, 2015	135	80	57	0
Wednesday, November 4, 2015	70	81	64	0
Thursday, November 5, 2015	55	86	72	0
Friday, November 6, 2015	101	84	69	0.01
Saturday, November 7, 2015	18	75	55	0.3
Sunday, November 8, 2015	39	73	54	0
Monday, November 9, 2015	127	75	53	0
Tuesday, November 10, 2015	67	75	57	0
Wednesday, November 11, 2015	75	84	64	0.11
Thursday, November 12, 2015	77	73	60	0
Friday, November 13, 2015	106	69	59	0
Saturday, November 14, 2015	41	70	55	0
Sunday, November 15, 2015	24	75	55	0

<b>Total</b>	935
<b>Average Daily Usage</b>	72
<b>Average Daily Usage (Weekday)</b>	92
<b>Average Daily Usage (Weekend)</b>	31

\*Weather conditions recorded at KSGR.



Hourly Usage			
Time of Day	Average Users Per Hour	Average Users Per Hour (Weekdays)	Average Users Per Hour (Weekends)
12:00 a.m.	0.2	0.2	0.0
1:00 a.m.	0.2	0.1	0.3
2:00 a.m.	0.4	0.2	0.8
3:00 a.m.	0.2	0.0	0.5
4:00 a.m.	0.2	0.2	0.0
5:00 a.m.	0.8	1.2	0.0
6:00 a.m.	2.2	3.1	0.0
7:00 a.m.	4.8	6.6	0.8
8:00 a.m.	6.5	7.6	4.3
9:00 a.m.	4.0	4.6	2.8
10:00 a.m.	3.3	2.6	5.0
11:00 a.m.	7.6	9.1	4.3
12:00 p.m.	14.7	19.0	5.0
1:00 p.m.	5.2	6.9	1.3
2:00 p.m.	3.5	4.8	0.8
3:00 p.m.	4.4	5.7	1.5
4:00 p.m.	5.8	8.2	0.3
5:00 p.m.	4.6	5.9	1.8
6:00 p.m.	1.9	2.3	1.0
7:00 p.m.	1.1	1.3	0.5
8:00 p.m.	0.2	0.2	0.0
9:00 p.m.	0.1	0.1	0.0
10:00 p.m.	0.2	0.2	0.0
11:00 p.m.	0.2	0.2	0.0



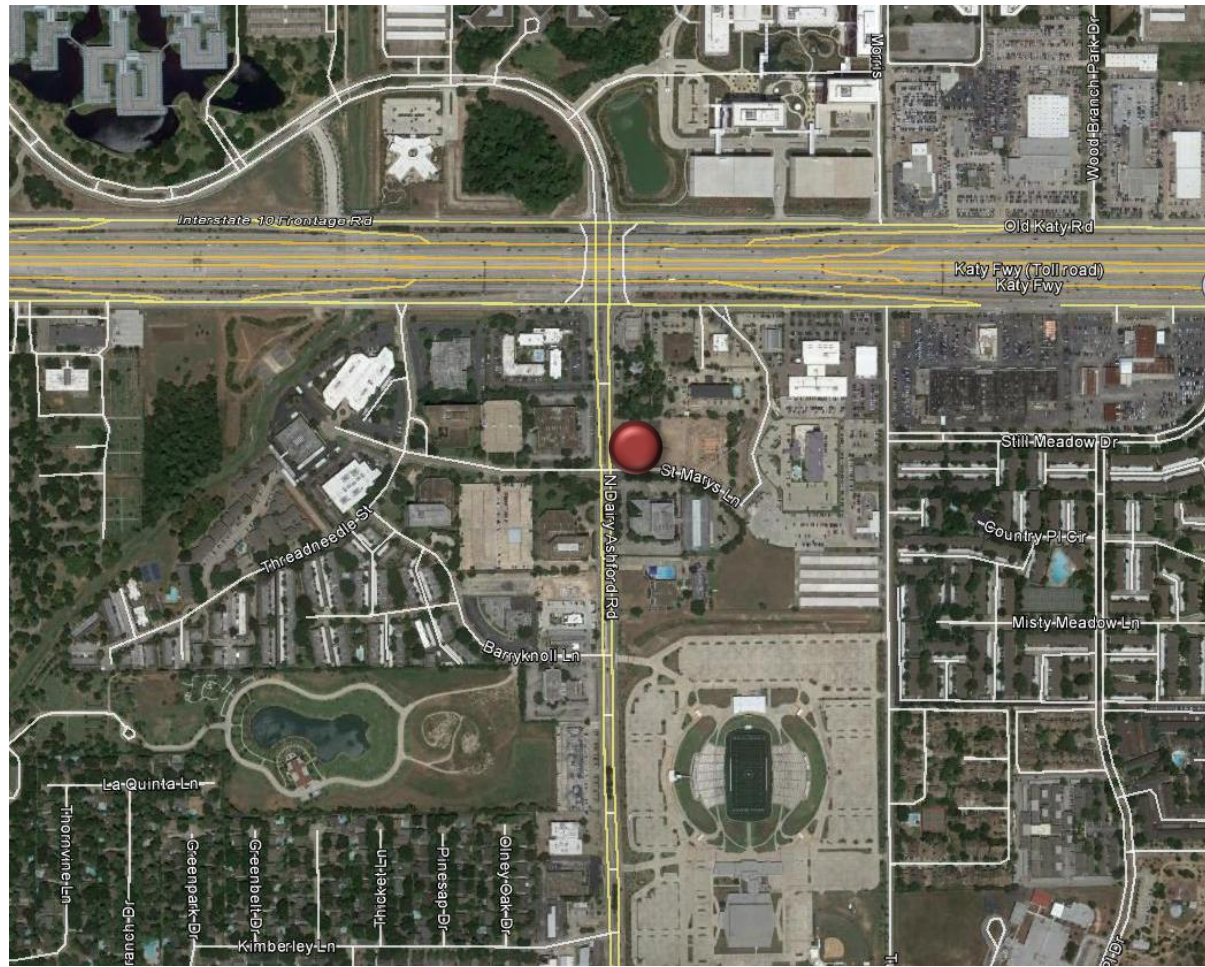
**Counter #7**

N. Dairy Ashford Road Northbound at St. Mary's Lane (NE Corner)

Location Information		
Location Name	N. Dairy Ashford Road Northbound at St. Mary's Lane (NE Corner)	
Location Description	Sidewalk along N. Dairy Ashford Road Northbound at St. Mary's Lane (NE Corner)	
Jurisdiction	Energy Corridor District/City of Houston	
Agency Deployed	Energy Corridor District	
GPS Coordinates	29°46'56.8"N, 95°36'22.8"W	
Surrounding Land Uses	North	Hotel, Commercial/Retail
	South	Office, Commercial/Retail
	East	Commercial/Retail, Multi-Family Residential (Under Construction)
	West	Office
What object was device secured to?	Sign Post (Addicks Park and Ride/Interstate 10 HOV Lane)	
Sidewalk Width	4'	
Buffer Width	5'	
Street Width	Six-Lane Divided Roadway	
Parallel Parking	No	
Landscaping or Trees	No	
Sidewalk Pavement Type	Concrete	
ADA Ramps	Yes	
Sidewalk Condition	Poor (Construction on Adjacent Site Left Mud on Sidewalk)	
Speed Limit	35 miles per hour	
Street Lighting	Yes	
Street Traffic Volume	49,356 (1009 N. Dairy Ashford Road: 2015)	
Transit	Nearby (METRO Bus Stop 350 feet west on St. Mary's Lane near N. Dairy Ashford Road)	
Shade	No	
Have counts been collected by H-GAC at this location before?	No	

Trends
<ul style="list-style-type: none"> <li>• There tends to be much higher usage on weekdays than during weekends.</li> <li>• On weekdays, usage varies throughout the day. It is highest in the morning (9:00 a.m. – 10:00 a.m.), midday (11:00 a.m. – 1:00 p.m.), and late afternoon (3:00 p.m. – 4:00 p.m.).</li> <li>• On weekends, usage peaks in the late afternoon (3:00 p.m. – 4:00 p.m.).</li> </ul>

**Location Information: Map**



**Location Information: Photos**



Image 13: Sidewalk along N. Dairy Ashford Road Facing North

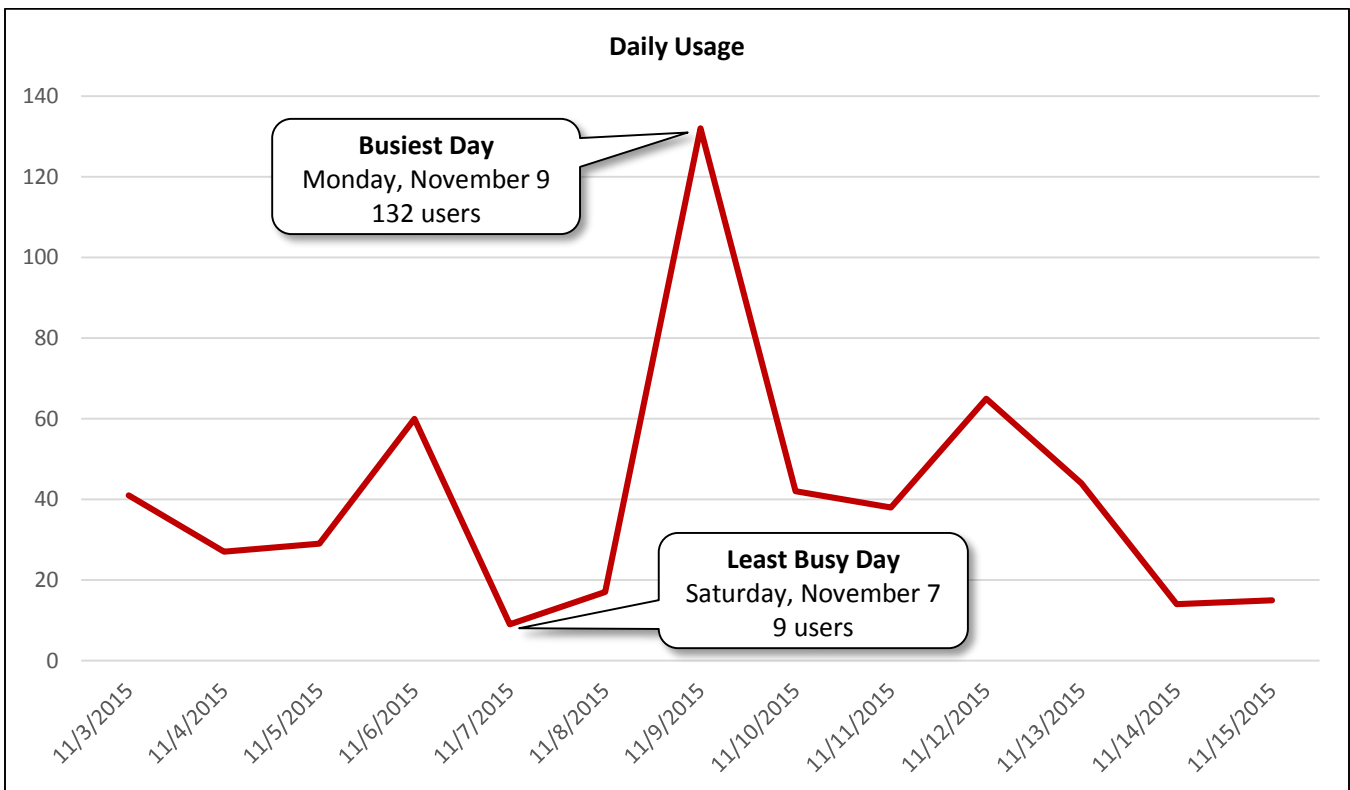


Image 14: Sidewalk along N. Dairy Ashford Road Facing South

Daily Usage				
Date	Users	Select Weather Data*		
		High Temperature (°F)	Low Temperature (°F)	Precipitation (inches)
Tuesday, November 3, 2015	41	80	57	0
Wednesday, November 4, 2015	27	81	64	0
Thursday, November 5, 2015	29	86	72	0
Friday, November 6, 2015	60	84	69	0.01
Saturday, November 7, 2015	9	75	55	0.3
Sunday, November 8, 2015	17	73	54	0
Monday, November 9, 2015	132	75	53	0
Tuesday, November 10, 2015	42	75	57	0
Wednesday, November 11, 2015	38	84	64	0.11
Thursday, November 12, 2015	65	73	60	0
Friday, November 13, 2015	44	69	59	0
Saturday, November 14, 2015	14	70	55	0
Sunday, November 15, 2015	15	75	55	0

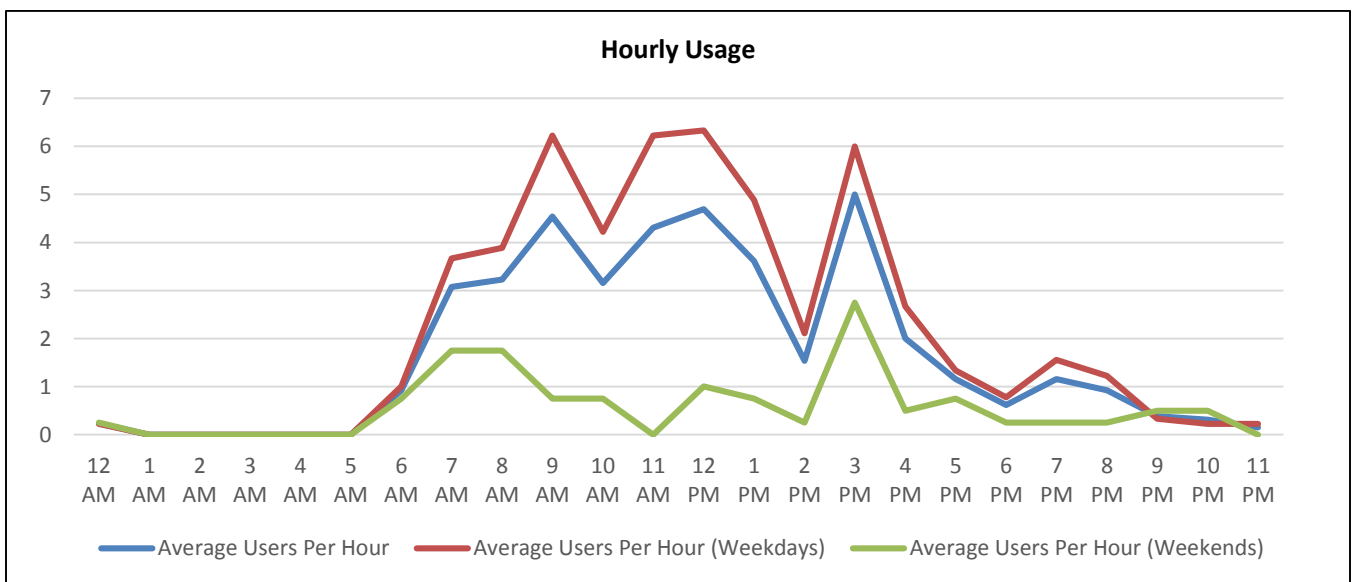
<b>Total</b>	533
<b>Average Daily Usage</b>	41
<b>Average Daily Usage (Weekday)</b>	53
<b>Average Daily Usage (Weekend)</b>	14

\*Weather conditions recorded at KSGR.





Hourly Usage			
Time of Day	Average Users Per Hour	Average Users Per Hour (Weekdays)	Average Users Per Hour (Weekends)
12:00 a.m.	0.2	0.2	0.3
1:00 a.m.	0.0	0.0	0.0
2:00 a.m.	0.0	0.0	0.0
3:00 a.m.	0.0	0.0	0.0
4:00 a.m.	0.0	0.0	0.0
5:00 a.m.	0.0	0.0	0.0
6:00 a.m.	0.9	1.0	0.8
7:00 a.m.	3.1	3.7	1.8
8:00 a.m.	3.2	3.9	1.8
9:00 a.m.	4.5	6.2	0.8
10:00 a.m.	3.2	4.2	0.8
11:00 a.m.	4.3	6.2	0.0
12:00 p.m.	4.7	6.3	1.0
1:00 p.m.	3.6	4.9	0.8
2:00 p.m.	1.5	2.1	0.3
3:00 p.m.	5.0	6.0	2.8
4:00 p.m.	2.0	2.7	0.5
5:00 p.m.	1.2	1.3	0.8
6:00 p.m.	0.6	0.8	0.3
7:00 p.m.	1.2	1.6	0.3
8:00 p.m.	0.9	1.2	0.3
9:00 p.m.	0.4	0.3	0.5
10:00 p.m.	0.3	0.2	0.5
11:00 p.m.	0.2	0.2	0.0



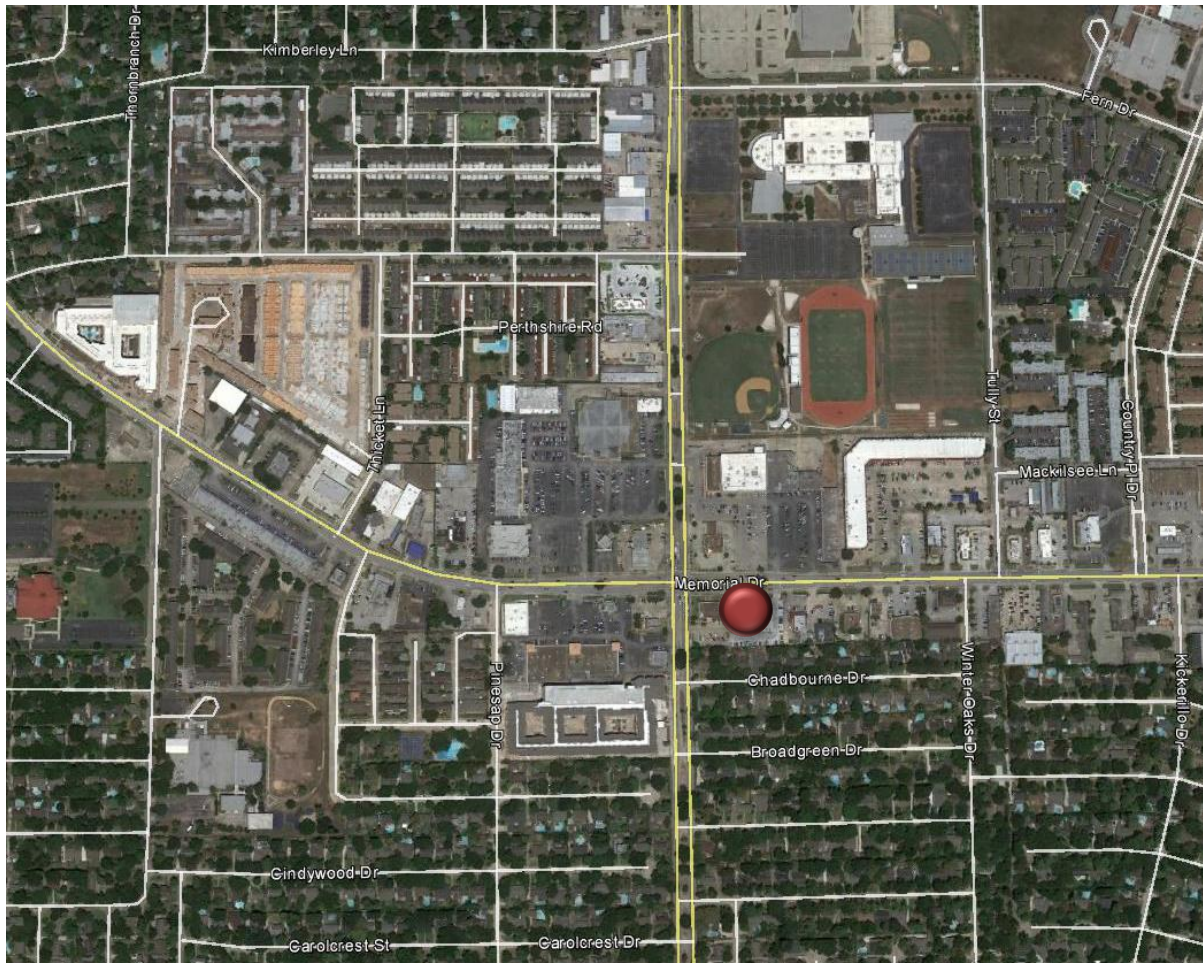
**Counter A**

Memorial Drive Eastbound at N. Dairy Ashford Road (SE Corner)

Location Information		
Location Name	Memorial Drive Eastbound at N. Dairy Ashford Road (SE Corner)	
Location Description	Sidewalk along Memorial Drive Eastbound at N. Dairy Ashford Road (SE Corner)	
Jurisdiction	City of Houston	
Agency Deployed	Houston-Galveston Area Council/Texas Transportation Institute	
GPS Coordinates	29°46'11.7"N, 95°36'20"W	
Surrounding Land Uses	North	Commercial/Retail, Institutional (Stratford High School)
	South	Commercial/Retail, Single-Family Residential, Multi-Family Residential
	East	Commercial/Retail
	West	Commercial/Retail, Multi-Family Residential
What object was device secured to?	Sign Post (Right Lane Ends/Merge Left)	
Sidewalk Width	4'	
Buffer Width	3'	
Street Width	Four-Lane Divided Roadway	
Parallel Parking	No	
Landscaping or Trees	No	
Sidewalk Pavement Type	Concrete	
ADA Ramps	Yes	
Sidewalk Condition	Good	
Speed Limit	35 miles per hour	
Street Lighting	Yes	
Street Traffic Volume	24,808 (14201 Memorial Drive: 2011)	
Transit	Yes (METRO Bus Stop 50 feet east on Memorial Drive)	
Shade	No	
Have counts been collected by H-GAC at this location before?	No	

Trends
<ul style="list-style-type: none"> <li>• There tends to be higher usage on weekdays than during weekends.</li> <li>• On weekdays, usage peaks in the late afternoon (3:00 p.m. – 4:00 p.m.).</li> <li>• On weekends, usage peaks in the morning (7:00 a.m. – 10:00 a.m.) and late afternoon (4:00 p.m. – 5:00 p.m.).</li> </ul>

**Location Information: Map**



**Location Information: Photos**



Image 15: Sidewalk along Memorial Drive Facing East

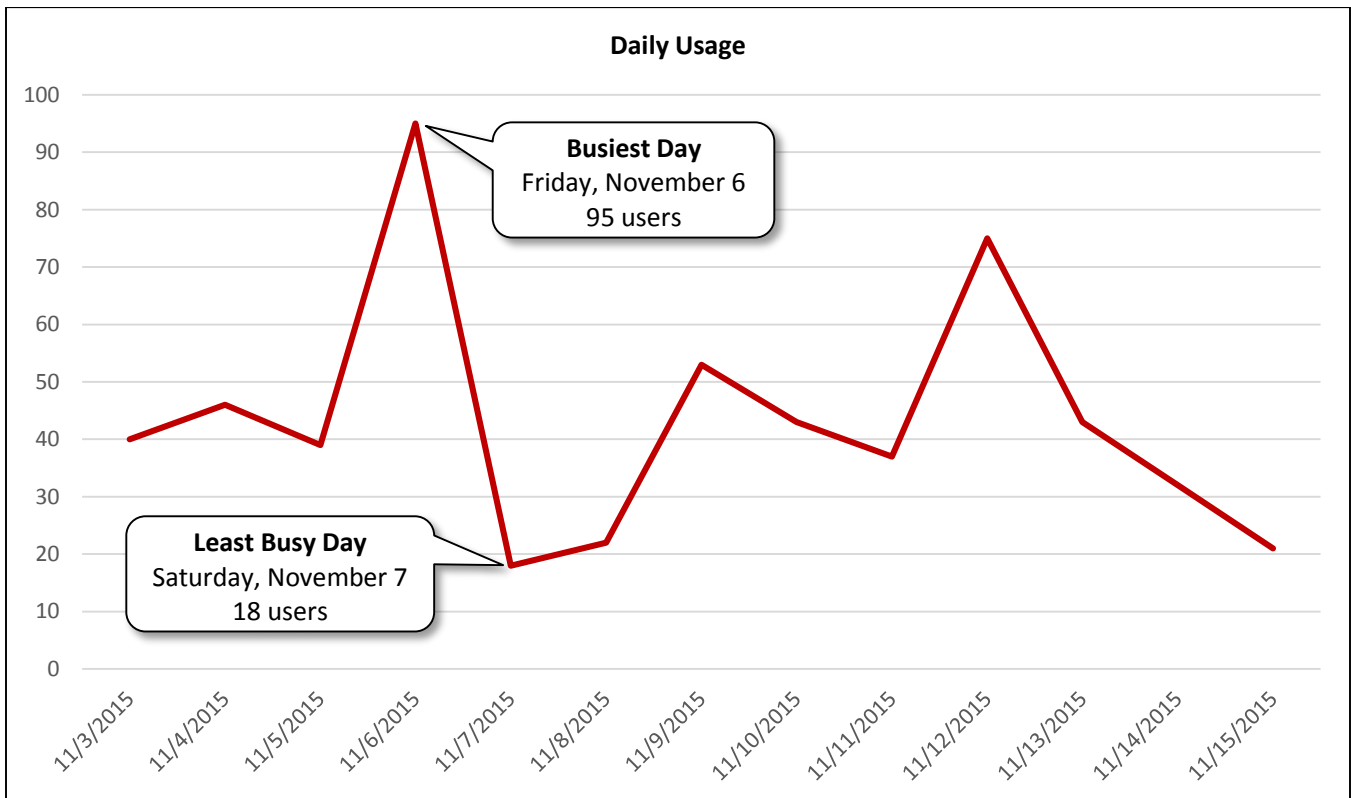


Image 16: Sidewalk along Memorial Drive Facing West

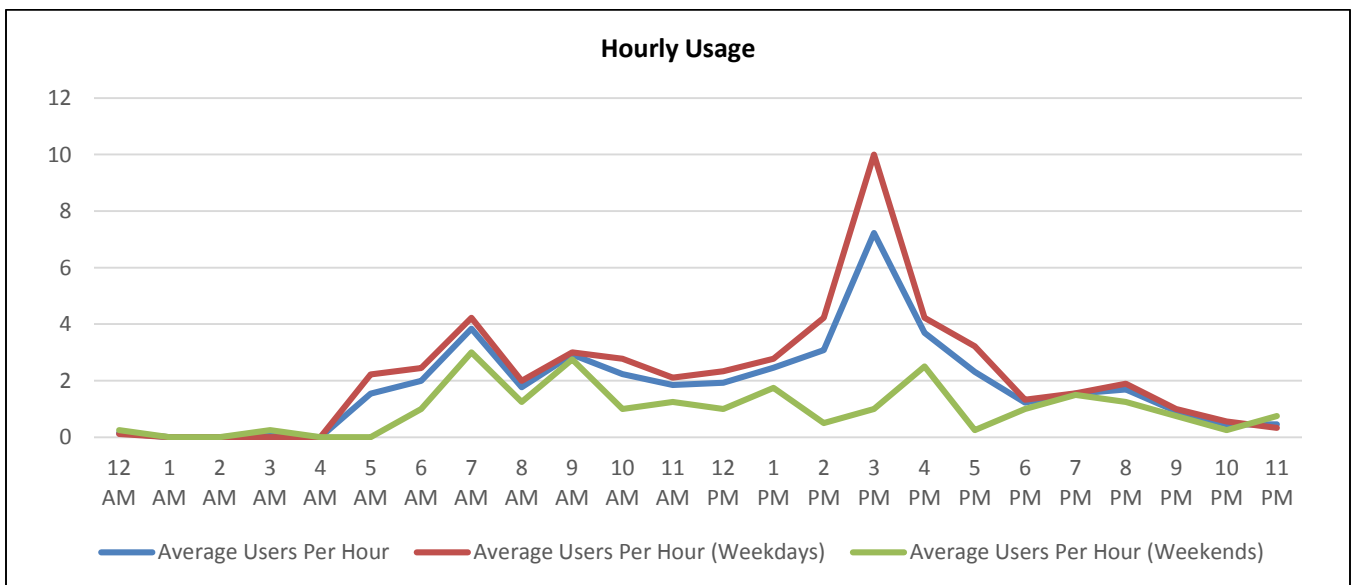
Daily Usage				
Date	Users	Select Weather Data*		
		High Temperature (°F)	Low Temperature (°F)	Precipitation (inches)
Tuesday, November 3, 2015	40	80	57	0
Wednesday, November 4, 2015	46	81	64	0
Thursday, November 5, 2015	39	86	72	0
Friday, November 6, 2015	95	84	69	0.01
Saturday, November 7, 2015	18	75	55	0.3
Sunday, November 8, 2015	22	73	54	0
Monday, November 9, 2015	53	75	53	0
Tuesday, November 10, 2015	43	75	57	0
Wednesday, November 11, 2015	37	84	64	0.11
Thursday, November 12, 2015	75	73	60	0
Friday, November 13, 2015	43	69	59	0
Saturday, November 14, 2015	32	70	55	0
Sunday, November 15, 2015	21	75	55	0

<b>Total</b>	564
<b>Average Daily Usage</b>	43
<b>Average Daily Usage (Weekday)</b>	52
<b>Average Daily Usage (Weekend)</b>	23

\*Weather conditions recorded at KSGR.



Hourly Usage			
Time of Day	Average Users Per Hour	Average Users Per Hour (Weekdays)	Average Users Per Hour (Weekends)
12:00 a.m.	0.2	0.1	0.3
1:00 a.m.	0.0	0.0	0.0
2:00 a.m.	0.0	0.0	0.0
3:00 a.m.	0.1	0.0	0.3
4:00 a.m.	0.0	0.0	0.0
5:00 a.m.	1.5	2.2	0.0
6:00 a.m.	2.0	2.4	1.0
7:00 a.m.	3.8	4.2	3.0
8:00 a.m.	1.8	2.0	1.3
9:00 a.m.	2.9	3.0	2.8
10:00 a.m.	2.2	2.8	1.0
11:00 a.m.	1.8	2.1	1.3
12:00 p.m.	1.9	2.3	1.0
1:00 p.m.	2.5	2.8	1.8
2:00 p.m.	3.1	4.2	0.5
3:00 p.m.	7.2	10.0	1.0
4:00 p.m.	3.7	4.2	2.5
5:00 p.m.	2.3	3.2	0.3
6:00 p.m.	1.2	1.3	1.0
7:00 p.m.	1.5	1.6	1.5
8:00 p.m.	1.7	1.9	1.3
9:00 p.m.	0.9	1.0	0.8
10:00 p.m.	0.5	0.6	0.3
11:00 p.m.	0.5	0.3	0.8



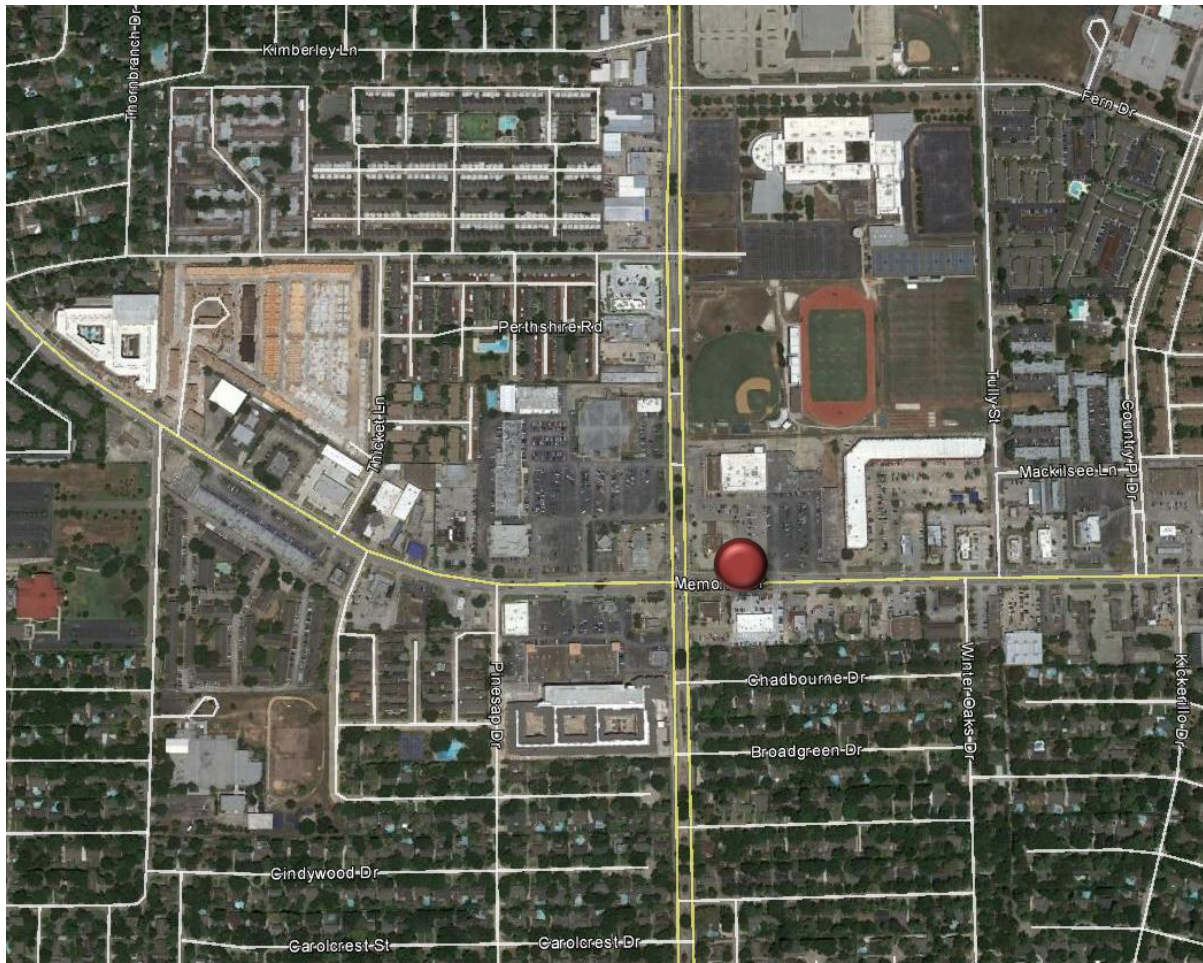
**Counter B**

Memorial Drive Westbound at N. Dairy Ashford Road (NE Corner)

Location Information		
Location Name	Memorial Drive Westbound at N. Dairy Ashford Road (NE Corner)	
Location Description	Sidewalk along Memorial Drive Westbound at N. Dairy Ashford Road (NE Corner)	
Jurisdiction	City of Houston	
Agency Deployed	Houston-Galveston Area Council/Texas Transportation Institute	
GPS Coordinates	29°46'12.8"N, 95°36'20.1"W	
Surrounding Land Uses	North	Commercial/Retail, Stratford High School
	South	Commercial/Retail, Single-Family Residential, Multi-Family Residential
	East	Commercial/Retail
	West	Commercial/Retail, Multi-Family Residential
What object was device secured to?	Sign Post (METRO Bus Stop)	
Sidewalk Width	4'	
Buffer Width	2.5'	
Street Width	Four-Lane Divided Roadway	
Parallel Parking	No	
Landscaping or Trees	No	
Sidewalk Pavement Type	Concrete	
ADA Ramps	Yes	
Sidewalk Condition	Good	
Speed Limit	35 miles per hour	
Street Lighting	Yes	
Street Traffic Volume	24,808 (14201 Memorial Drive: 2011)	
Transit	Yes (Located Adjacent to METRO Bus Stop)	
Shade	No	
Have counts been collected by H-GAC at this location before?	No	

Trends
<ul style="list-style-type: none"> <li>Usage at this location was significantly higher than usage recorded by Counter A, which was placed directly across Memorial Drive. This counter may have been incorrectly positioned. It may have counted vehicles driving in the adjacent parking lot, inflating counts. Since it was near a bus stop, transit riders waiting for a bus may have walked back and forth in front of the equipment, further inflating counts.</li> <li>There tends to be higher usage during weekends than on weekdays.</li> <li>On weekdays, usage peaks midday (11:00 a.m. – 1:00 p.m.), with a less pronounced increase in usage in the evening (5:00 p.m. – 6:00 p.m.).</li> <li>On weekends, usage peaks midday (10:00 a.m. – 3:00 p.m.).</li> </ul>

**Location Information: Map**



**Location Information: Photos**



Image 17: Sidewalk along Memorial Drive Facing East

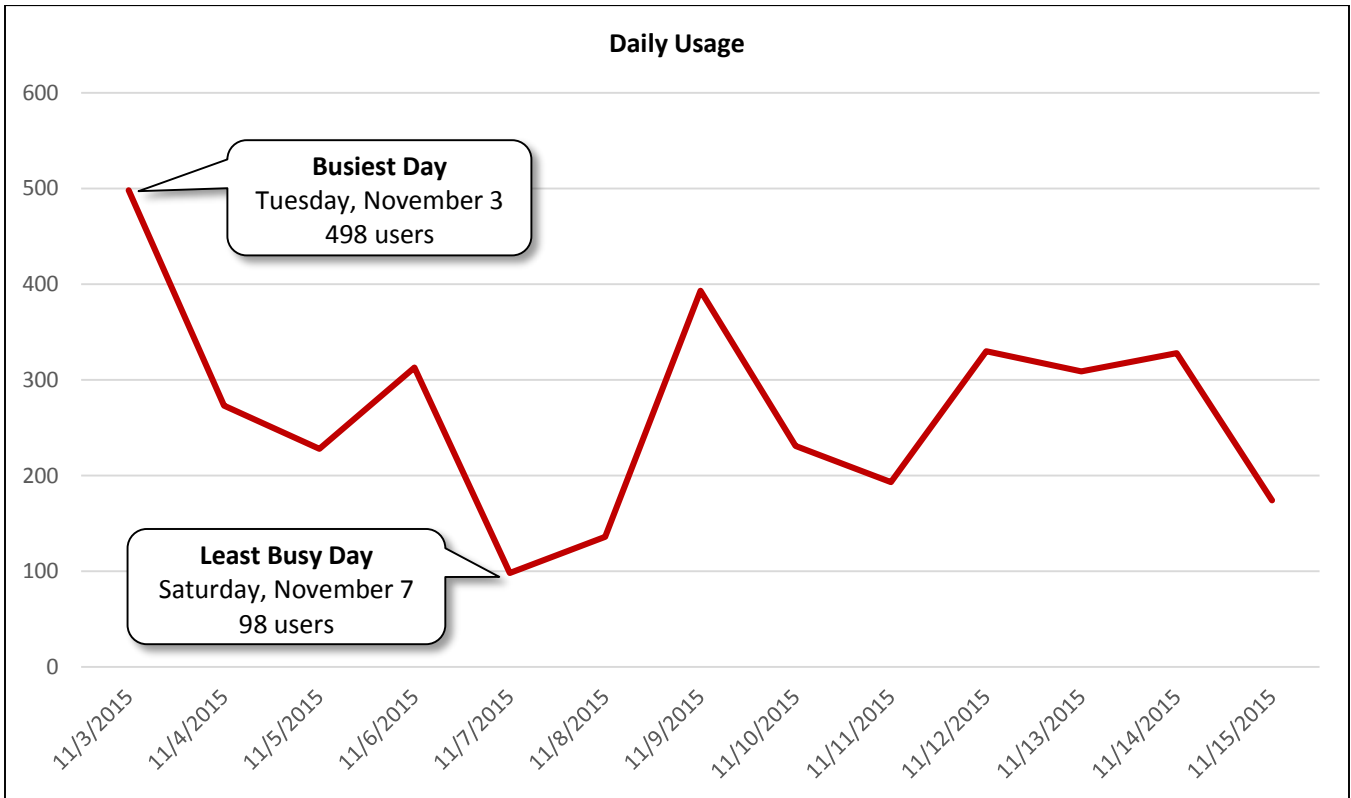


Image 18: Sidewalk along Memorial Drive Facing West

Daily Usage				
Date	Users	Select Weather Data*		
		High Temperature (°F)	Low Temperature (°F)	Precipitation (inches)
Tuesday, November 3, 2015	498	80	57	0
Wednesday, November 4, 2015	273	81	64	0
Thursday, November 5, 2015	228	86	72	0
Friday, November 6, 2015	313	84	69	0.01
Saturday, November 7, 2015	98	75	55	0.3
Sunday, November 8, 2015	136	73	54	0
Monday, November 9, 2015	393	75	53	0
Tuesday, November 10, 2015	231	75	57	0
Wednesday, November 11, 2015	193	84	64	0.11
Thursday, November 12, 2015	330	73	60	0
Friday, November 13, 2015	309	69	59	0
Saturday, November 14, 2015	328	70	55	0
Sunday, November 15, 2015	174	75	55	0

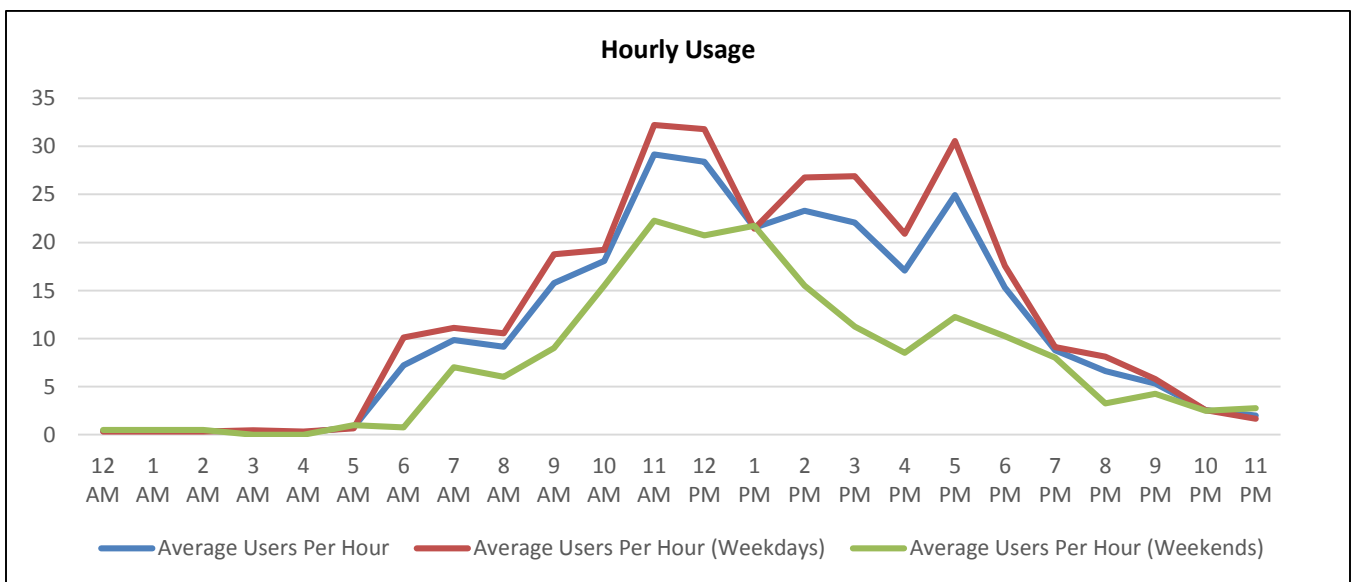
<b>Total</b>	3,504
<b>Average Daily Usage</b>	270
<b>Average Daily Usage (Weekday)</b>	184
<b>Average Daily Usage (Weekend)</b>	308

\*Weather conditions recorded at KSGR.





Hourly Usage			
Time of Day	Average Users Per Hour	Average Users Per Hour (Weekdays)	Average Users Per Hour (Weekends)
12:00 a.m.	0.4	0.3	0.5
1:00 a.m.	0.4	0.3	0.5
2:00 a.m.	0.4	0.3	0.5
3:00 a.m.	0.3	0.4	0.0
4:00 a.m.	0.2	0.3	0.0
5:00 a.m.	0.8	0.7	1.0
6:00 a.m.	7.2	10.1	0.8
7:00 a.m.	9.8	11.1	7.0
8:00 a.m.	9.2	10.6	6.0
9:00 a.m.	15.8	18.8	9.0
10:00 a.m.	18.1	19.2	15.5
11:00 a.m.	29.2	32.2	22.3
12:00 p.m.	28.4	31.8	20.8
1:00 p.m.	21.5	21.4	21.8
2:00 p.m.	23.3	26.8	15.5
3:00 p.m.	22.1	26.9	11.3
4:00 p.m.	17.1	20.9	8.5
5:00 p.m.	24.9	30.6	12.3
6:00 p.m.	15.3	17.6	10.3
7:00 p.m.	8.8	9.1	8.0
8:00 p.m.	6.6	8.1	3.3
9:00 p.m.	5.3	5.8	4.3
10:00 p.m.	2.5	2.6	2.5
11:00 p.m.	2.0	1.7	2.8



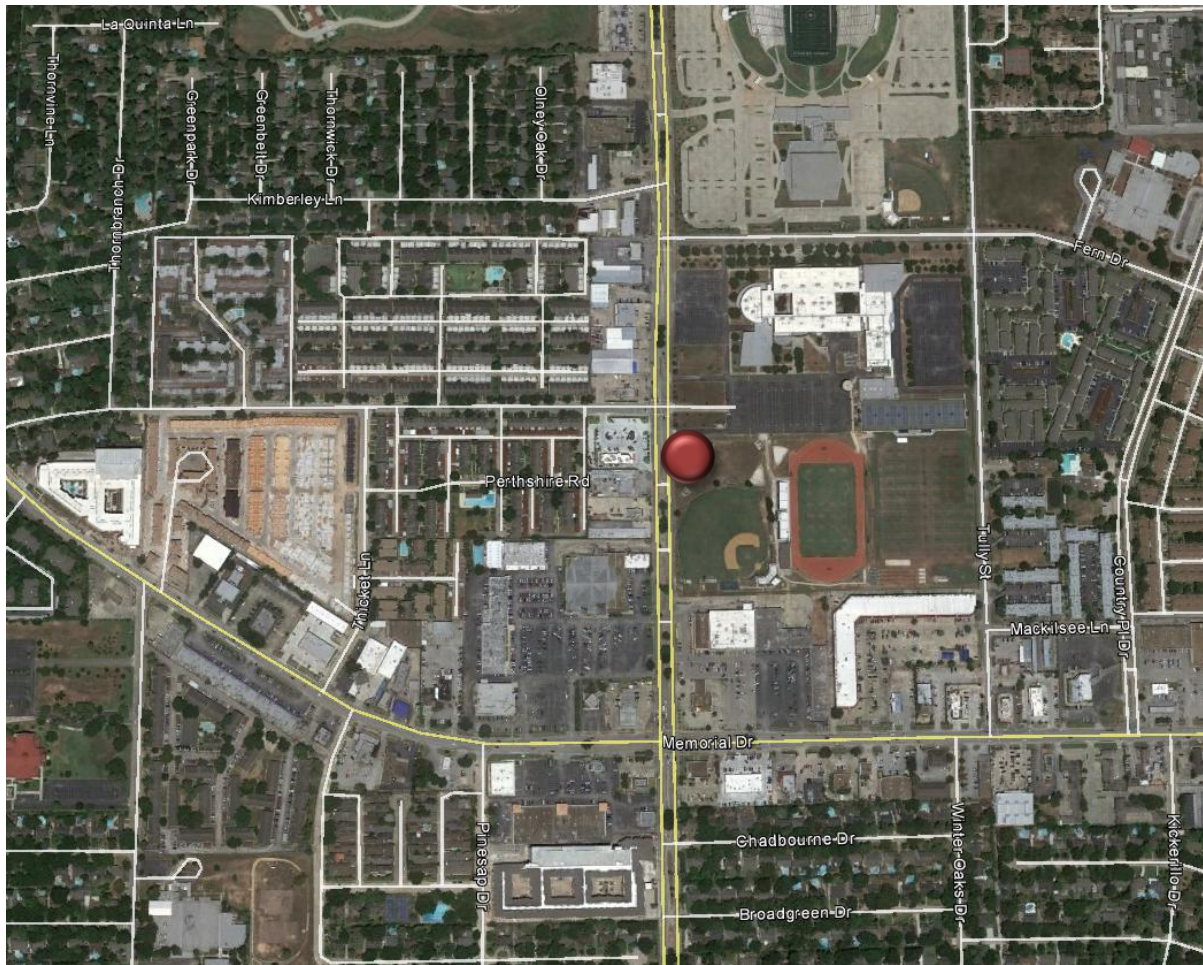
**Counter C**

**N. Dairy Ashford Road Northbound at Perthshire Road (SE Corner)**

Location Information		
Location Name	N. Dairy Ashford Road Northbound at Perthshire Road (SE Corner)	
Location Description	Sidewalk along N. Dairy Ashford Road Northbound at Perthshire Road (SE Corner) Adjacent to Stratford High School	
Jurisdiction	City of Houston	
Agency Deployed	Houston-Galveston Area Council/Texas Transportation Institute	
GPS Coordinates	29°46'23"N, 95°36'22.4" W	
Surrounding Land Uses	North	Commercial/Retail, Stratford High School
	South	Stratford High School (Athletic Fields), Commercial/Retail
	East	Stratford High School
	West	Commercial/Retail, Multi-Family Residential
What object was device secured to?	Light Post (Second Light Post South of Perthshire Road Adjacent to Baseball Field)	
Sidewalk Width	4 feet	
Buffer Width	3.5 feet	
Street Width	Six-Lane Divided Roadway	
Parallel Parking	No	
Landscaping or Trees	None	
Sidewalk Pavement Type	Concrete	
ADA Ramps	Yes	
Sidewalk Condition	Good	
Speed Limit	35 miles per hour	
Street Lighting	Yes	
Street Traffic Volume	49,356 (1009 N. Dairy Ashford Road: 2015)	
Transit	Nearby (METRO Bus Stop 220 Feet North at Perthshire Road/N. Dairy Ashford Road Intersection)	
Shade	None	
Have counts been collected by H-GAC at this location before?	No	

Trends
<ul style="list-style-type: none"> <li>• There tends to be higher usage on weekdays than during weekends.</li> <li>• On weekdays, usage peaks in the late afternoon (3:00 p.m. – 4:00 p.m.). There is a less pronounced increase in usage between 7:00 a.m. and 8:00 a.m.</li> <li>• On weekends, usage peaks midday (12:00 p.m. – 1:00 p.m.).</li> <li>• Rain seems to influence usage. The rainiest day (Saturday, November 7: 0.3 inches of rain) had the least usage.</li> </ul>

**Location Information: Map**



**Location Information: Photos**



Image 19: Sidewalk along N. Dairy Ashford Road Facing North

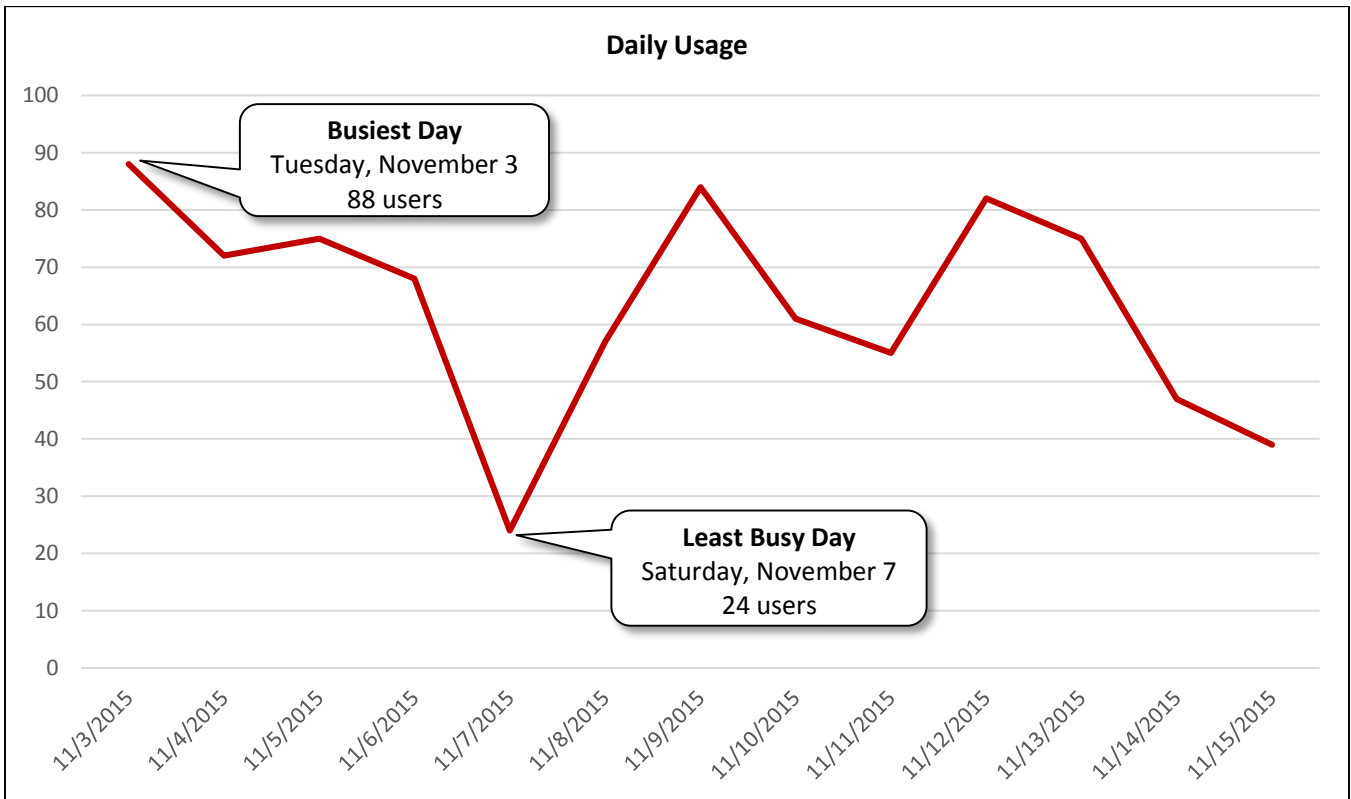


Image 20: Sidewalk along N. Dairy Ashford Road Facing South

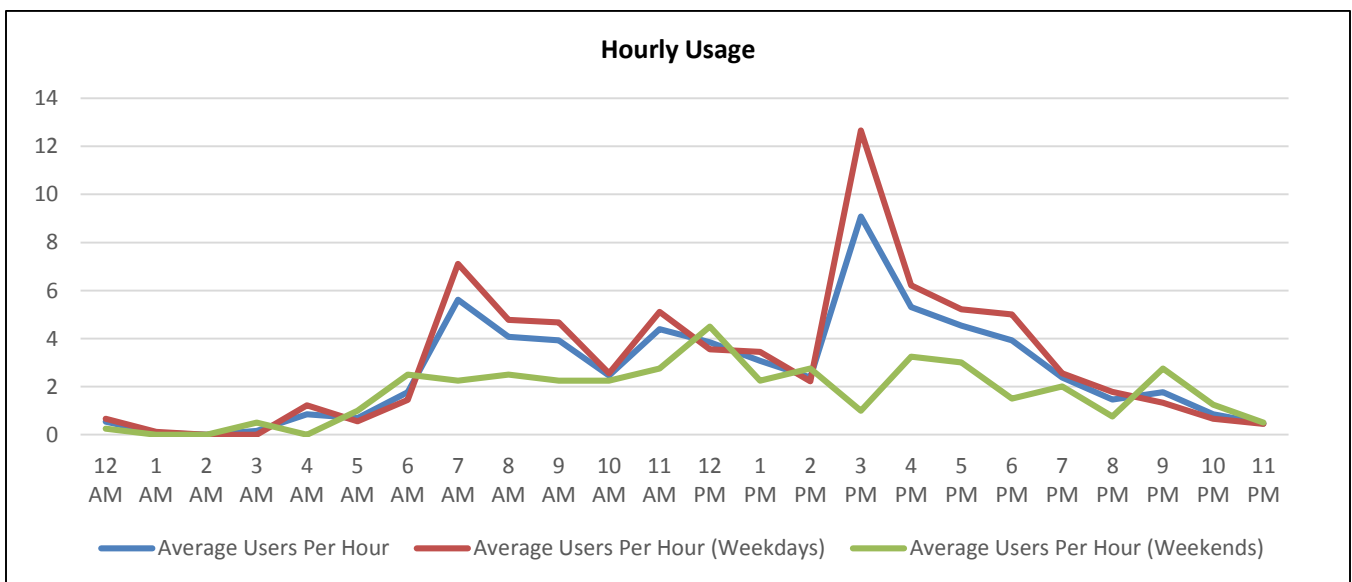
Daily Usage				
Date	Users	Select Weather Data*		
		High Temperature (°F)	Low Temperature (°F)	Precipitation (inches)
Tuesday, November 3, 2015	88	80	57	0
Wednesday, November 4, 2015	72	81	64	0
Thursday, November 5, 2015	75	86	72	0
Friday, November 6, 2015	68	84	69	0.01
Saturday, November 7, 2015	24	75	55	0.3
Sunday, November 8, 2015	57	73	54	0
Monday, November 9, 2015	84	75	53	0
Tuesday, November 10, 2015	61	75	57	0
Wednesday, November 11, 2015	55	84	64	0.11
Thursday, November 12, 2015	82	73	60	0
Friday, November 13, 2015	75	69	59	0
Saturday, November 14, 2015	47	70	55	0
Sunday, November 15, 2015	39	75	55	0

<b>Total</b>	827
<b>Average Daily Usage</b>	64
<b>Average Daily Usage (Weekday)</b>	73
<b>Average Daily Usage (Weekend)</b>	42

\*Weather conditions recorded at KSGR.



Hourly Usage			
Time of Day	Average Users Per Hour	Average Users Per Hour (Weekdays)	Average Users Per Hour (Weekends)
12:00 a.m.	0.5	0.7	0.3
1:00 a.m.	0.1	0.1	0.0
2:00 a.m.	0.0	0.0	0.0
3:00 a.m.	0.2	0.0	0.5
4:00 a.m.	0.8	1.2	0.0
5:00 a.m.	0.7	0.6	1.0
6:00 a.m.	1.8	1.4	2.5
7:00 a.m.	5.6	7.1	2.3
8:00 a.m.	4.1	4.8	2.5
9:00 a.m.	3.9	4.7	2.3
10:00 a.m.	2.5	2.6	2.3
11:00 a.m.	4.4	5.1	2.8
12:00 p.m.	3.8	3.6	4.5
1:00 p.m.	3.1	3.4	2.3
2:00 p.m.	2.4	2.2	2.8
3:00 p.m.	9.1	12.7	1.0
4:00 p.m.	5.3	6.2	3.3
5:00 p.m.	4.5	5.2	3.0
6:00 p.m.	3.9	5.0	1.5
7:00 p.m.	2.4	2.6	2.0
8:00 p.m.	1.5	1.8	0.8
9:00 p.m.	1.8	1.3	2.8
10:00 p.m.	0.8	0.7	1.3
11:00 p.m.	0.5	0.4	0.5



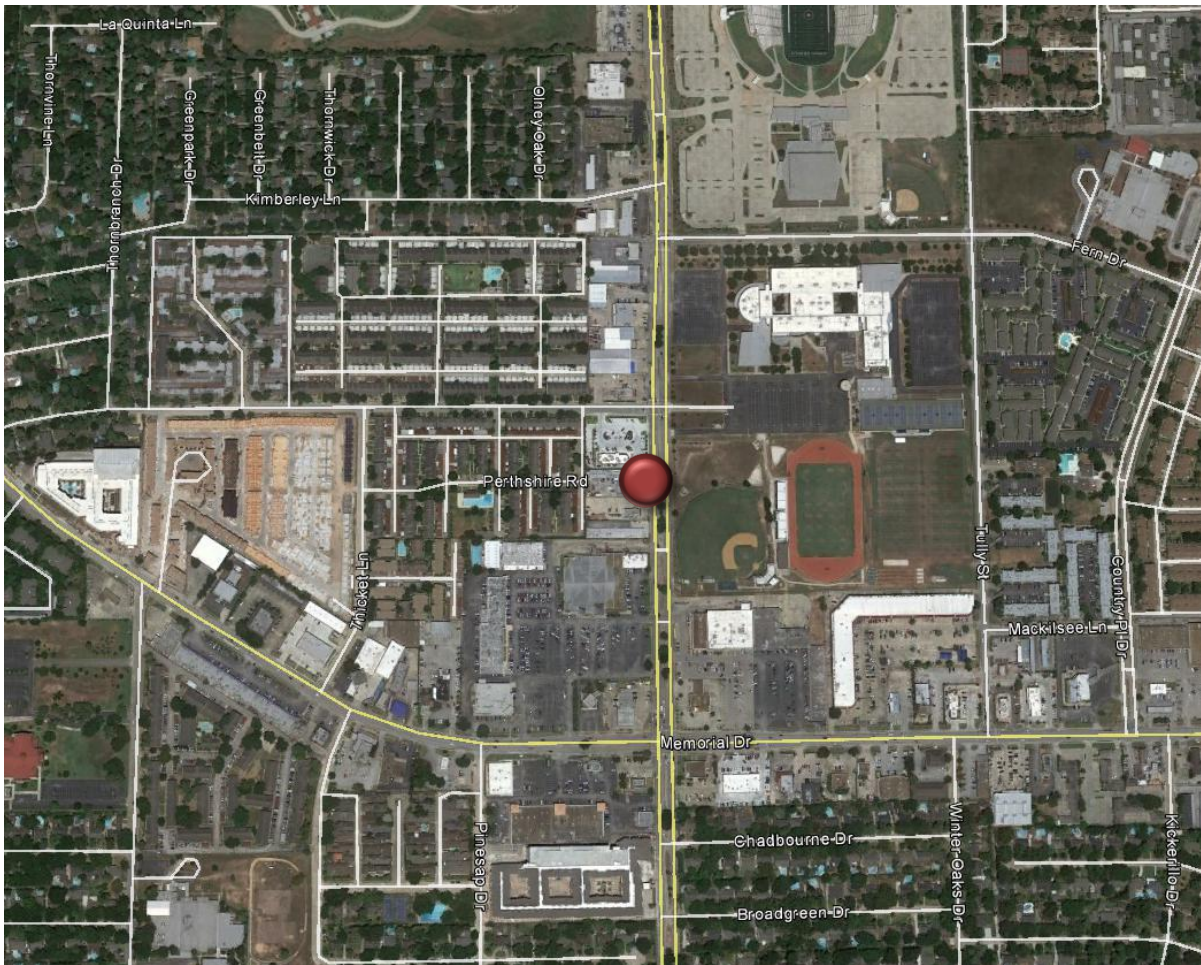
**Counter D**

N. Dairy Ashford Road Southbound at Perthshire Road (SW Corner)

Location Information		
Location Name	N. Dairy Ashford Road Southbound at Perthshire Road (SW Corner)	
Location Description	Sidewalk along N. Dairy Ashford Road Southbound at Perthshire Road (SW Corner) near Stratford High School	
Jurisdiction	City of Houston	
Agency Deployed	Houston-Galveston Area Council/Texas Transportation Institute	
GPS Coordinates	29°46'23"N, 95°36'23.4" W	
Surrounding Land Uses	North	Commercial/Retail, Stratford High School
	South	Stratford High School (Athletic Fields), Commercial/Retail
	East	Stratford High School
	West	Commercial/Retail, Multi-Family Residential
What object was device secured to?	Sign Post (Speed Limit: 35 miles per hour)	
Sidewalk Width	4'	
Buffer Width	3'	
Street Width	Six-Lane Divided Roadway	
Parallel Parking	No	
Landscaping or Trees	None	
Sidewalk Pavement Type	Concrete	
ADA Ramps	Yes	
Sidewalk Condition	Good	
Speed Limit	35 miles per hour	
Street Lighting	Yes	
Street Traffic Volume	49,356 (1009 N. Dairy Ashford Road: 2015)	
Transit	Nearby (METRO Bus Stop 320 Feet North at Perthshire Road/N. Dairy Ashford Road Intersection)	
Shade	No	
Have counts been collected by H-GAC at this location before?	No	

Trends
<ul style="list-style-type: none"> <li>• There tends to be higher usage on weekdays than during weekends.</li> <li>• On weekdays, usage peaks in the early morning (6:00 a.m. – 8:00 a.m.).</li> <li>• On weekends, usage remains relatively steady throughout the day. It is highest in the early morning (7:00 a.m. – 8:00 a.m.).</li> <li>• Rain seems to influence usage. The rainiest day (Saturday, November 7: 0.3 inches of rain) had the least usage.</li> </ul>

**Location Information: Map**



**Location Information: Photos**



Image 21: Sidewalk along N. Dairy Ashford Road Facing North

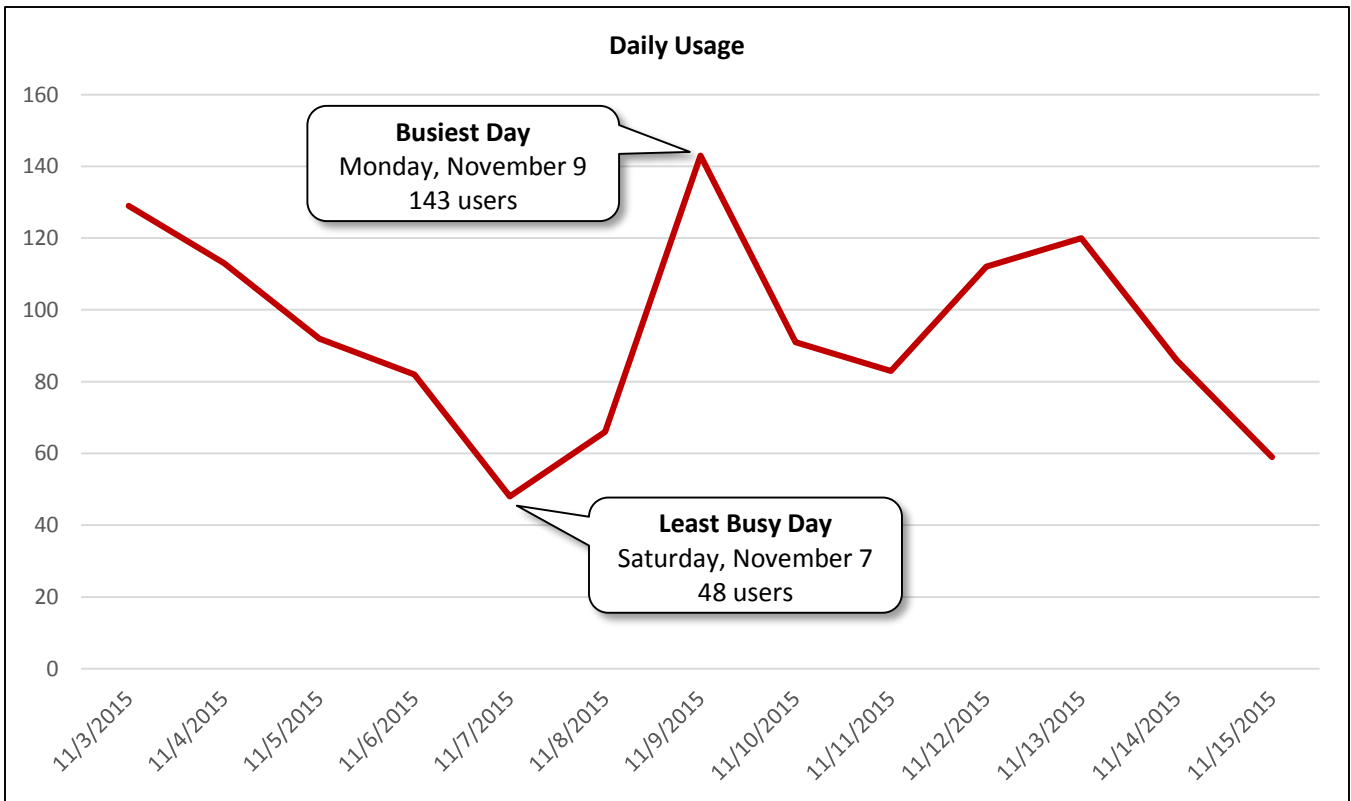


Image 22: Sidewalk along N. Dairy Ashford Road Facing South

Daily Usage				
Date	Users	Select Weather Data*		
		High Temperature (°F)	Low Temperature (°F)	Precipitation (inches)
Tuesday, November 3, 2015	129	80	57	0
Wednesday, November 4, 2015	113	81	64	0
Thursday, November 5, 2015	92	86	72	0
Friday, November 6, 2015	82	84	69	0.01
Saturday, November 7, 2015	48	75	55	0.3
Sunday, November 8, 2015	66	73	54	0
Monday, November 9, 2015	143	75	53	0
Tuesday, November 10, 2015	91	75	57	0
Wednesday, November 11, 2015	83	84	64	0.11
Thursday, November 12, 2015	112	73	60	0
Friday, November 13, 2015	120	69	59	0
Saturday, November 14, 2015	86	70	55	0
Sunday, November 15, 2015	59	75	55	0

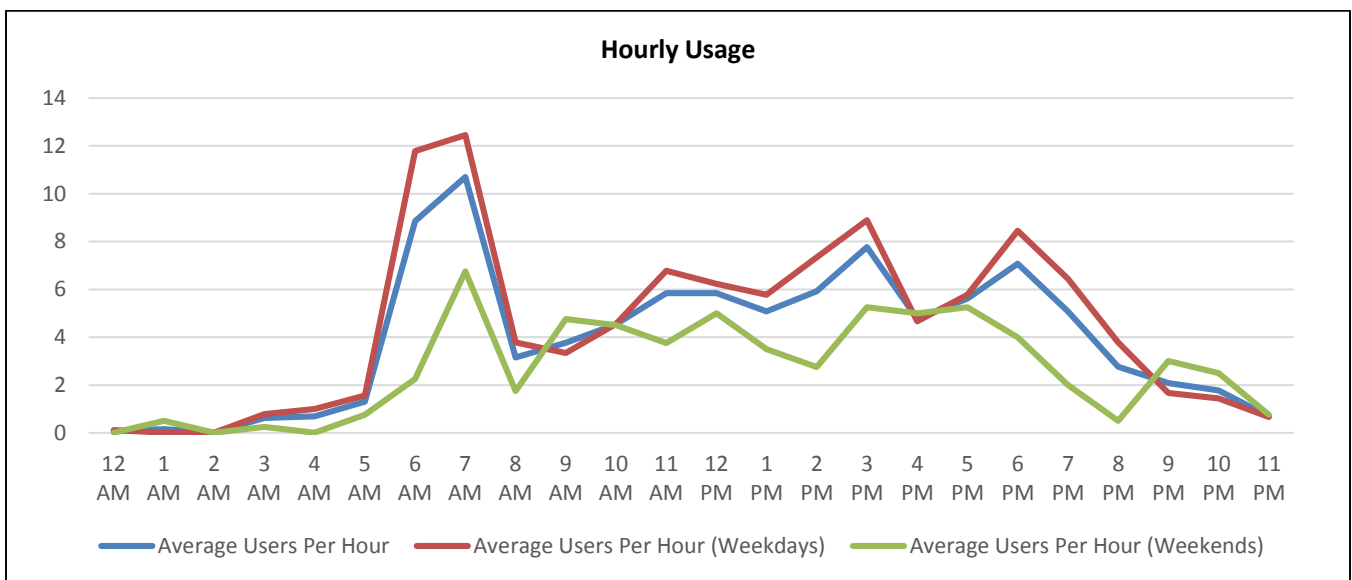
<b>Total</b>	1,224
<b>Average Daily Usage</b>	94
<b>Average Daily Usage (Weekday)</b>	107
<b>Average Daily Usage (Weekend)</b>	65

\*Weather conditions recorded at KSGR.





Hourly Usage			
Time of Day	Average Users Per Hour	Average Users Per Hour (Weekdays)	Average Users Per Hour (Weekends)
12:00 a.m.	0.1	0.1	0.0
1:00 a.m.	0.2	0.0	0.5
2:00 a.m.	0.0	0.0	0.0
3:00 a.m.	0.6	0.8	0.3
4:00 a.m.	0.7	1.0	0.0
5:00 a.m.	1.3	1.6	0.8
6:00 a.m.	8.8	11.8	2.3
7:00 a.m.	10.7	12.4	6.8
8:00 a.m.	3.2	3.8	1.8
9:00 a.m.	3.8	3.3	4.8
10:00 a.m.	4.5	4.6	4.5
11:00 a.m.	5.8	6.8	3.8
12:00 p.m.	5.8	6.2	5.0
1:00 p.m.	5.1	5.8	3.5
2:00 p.m.	5.9	7.3	2.8
3:00 p.m.	7.8	8.9	5.3
4:00 p.m.	4.8	4.7	5.0
5:00 p.m.	5.6	5.8	5.3
6:00 p.m.	7.1	8.4	4.0
7:00 p.m.	5.1	6.4	2.0
8:00 p.m.	2.8	3.8	0.5
9:00 p.m.	2.1	1.7	3.0
10:00 p.m.	1.8	1.4	2.5
11:00 p.m.	0.7	0.7	0.8



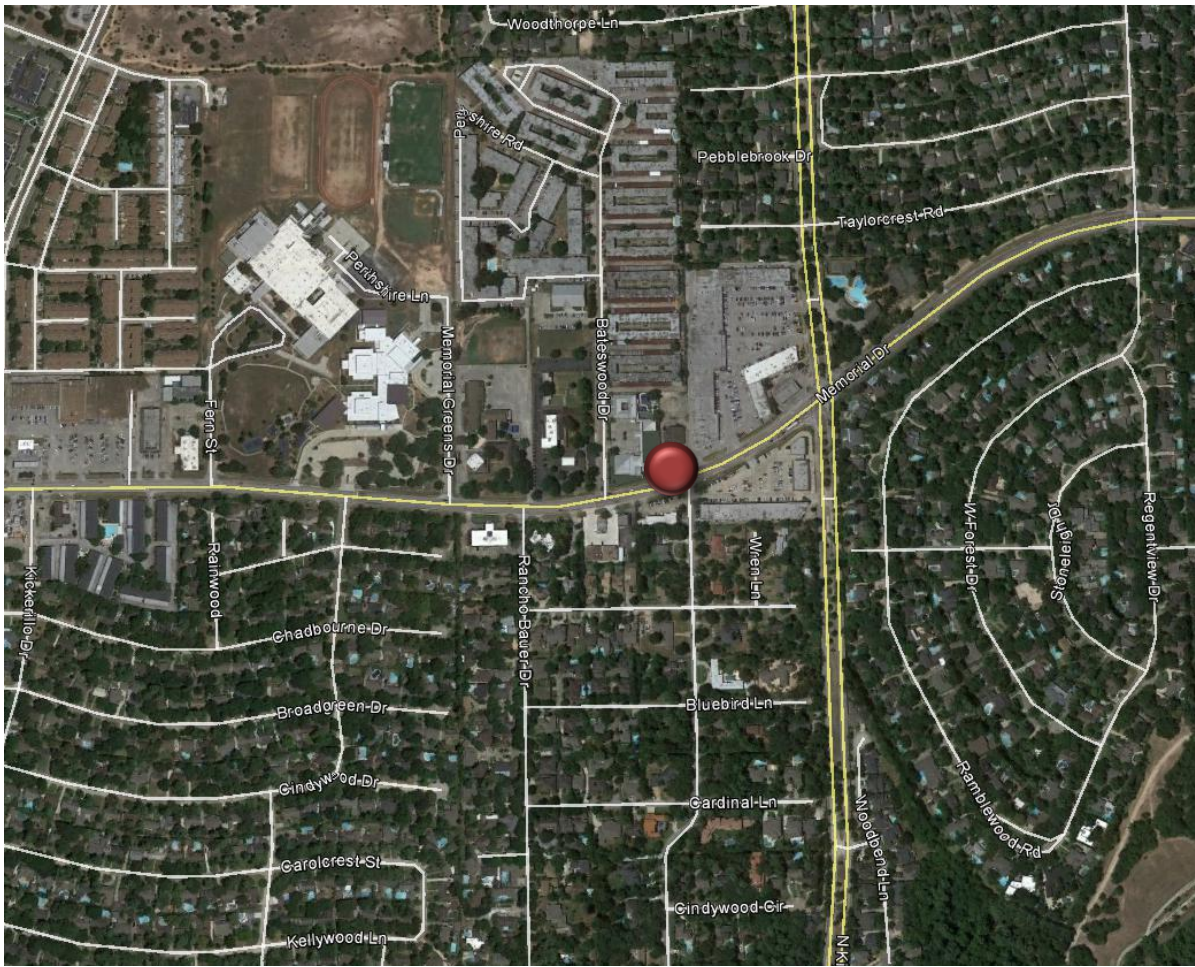
**Counter E**

Memorial Drive Westbound at White Wing Lane

Location Information	
Location Name	Memorial Drive Westbound at White Wing Lane
Location Description	Sidewalk along Memorial Drive Westbound at White Wing Lane
Jurisdiction	City of Houston
Agency Deployed	Houston-Galveston Area Council/Texas Transportation Institute
GPS Coordinates	29°46'13.1"N, 95°35'30.5"W
Surrounding Land Uses	North Institutional (Private School), Commercial/Retail, Multi-Family Residential
	South Institutional (Church), Commercial/Retail, Single-Family Residential
	East Commercial/Retail, Single-Family Residential
	West Institutional (Private School, Churches, Meadow Wood Elementary School, Spring Forest Middle School), Commercial/Retail, Single-Family Residential
What object was device secured to?	Sign Post (School Zone Sign)
Sidewalk Width	4'
Buffer Width	8'
Street Width	Four-Lane Undivided Roadway
Parallel Parking	None
Landscaping or Trees	No
Sidewalk Pavement Type	Concrete
ADA Ramps	No
Sidewalk Condition	Good
Speed Limit	35 miles per hour
Street Lighting	Yes
Street Traffic Volume	24,808 (14201 Memorial Drive: 2011)
Transit	Nearby (METRO Bus Stop 250 feet west at Bateswood Drive/Memorial Drive)
Shade	No
Have counts been collected by H-GAC at this location before?	No

Trends
<ul style="list-style-type: none"> <li>• There tends to be higher usage on weekdays than during weekends.</li> <li>• On weekdays, usage is highest in the late morning (10:00 a.m. – 11:00 a.m.) and late afternoon (4:00 p.m. – 5:00 p.m.).</li> <li>• On weekends, usage peaks in the early afternoon (1:00 p.m. – 2:00 p.m.).</li> <li>• Rain seems to influence usage. The rainiest day (Saturday, November 7: 0.3 inches of rain) had the least usage.</li> </ul>

**Location Information: Map**



**Location Information: Photos**



Image 23: Sidewalk along Memorial Drive Facing East

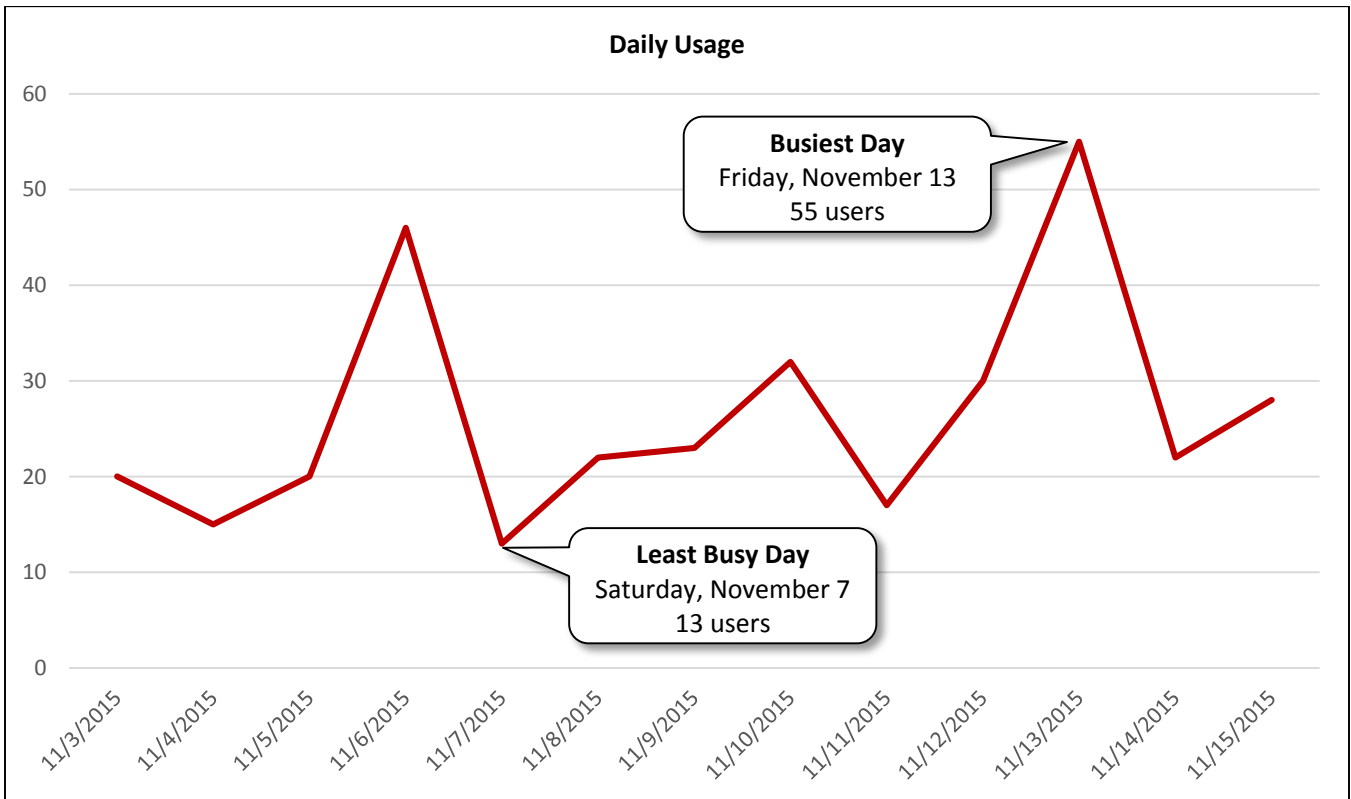


Image 24: Sidewalk along Memorial Drive Facing West

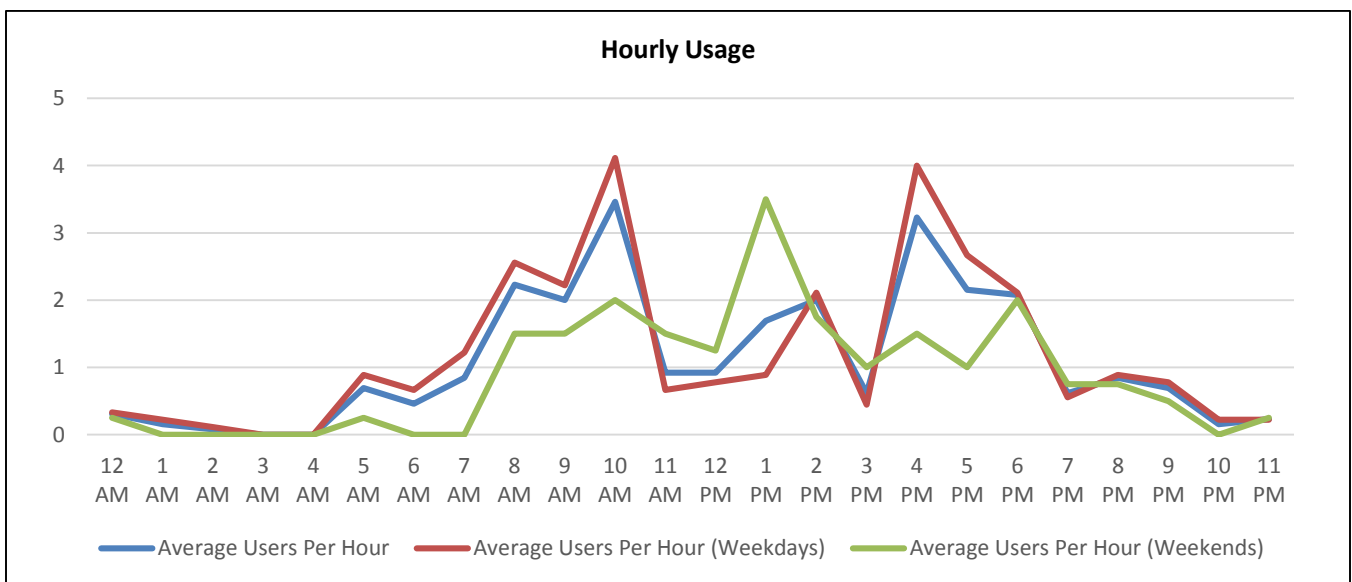
Daily Usage				
Date	Users	Select Weather Data*		
		High Temperature (°F)	Low Temperature (°F)	Precipitation (inches)
Tuesday, November 3, 2015	20	80	57	0
Wednesday, November 4, 2015	15	81	64	0
Thursday, November 5, 2015	20	86	72	0
Friday, November 6, 2015	46	84	69	0.01
Saturday, November 7, 2015	13	75	55	0.3
Sunday, November 8, 2015	22	73	54	0
Monday, November 9, 2015	23	75	53	0
Tuesday, November 10, 2015	32	75	57	0
Wednesday, November 11, 2015	17	84	64	0.11
Thursday, November 12, 2015	30	73	60	0
Friday, November 13, 2015	55	69	59	0
Saturday, November 14, 2015	22	70	55	0
Sunday, November 15, 2015	28	75	55	0

<b>Total</b>	343
<b>Average Daily Usage</b>	26
<b>Average Daily Usage (Weekday)</b>	29
<b>Average Daily Usage (Weekend)</b>	21

\*Weather conditions recorded at KSGR.



Hourly Usage			
Time of Day	Average Users Per Hour	Average Users Per Hour (Weekdays)	Average Users Per Hour (Weekends)
12:00 a.m.	0.3	0.3	0.3
1:00 a.m.	0.2	0.2	0.0
2:00 a.m.	0.1	0.1	0.0
3:00 a.m.	0.0	0.0	0.0
4:00 a.m.	0.0	0.0	0.0
5:00 a.m.	0.7	0.9	0.3
6:00 a.m.	0.5	0.7	0.0
7:00 a.m.	0.8	1.2	0.0
8:00 a.m.	2.2	2.6	1.5
9:00 a.m.	2.0	2.2	1.5
10:00 a.m.	3.5	4.1	2.0
11:00 a.m.	0.9	0.7	1.5
12:00 p.m.	0.9	0.8	1.3
1:00 p.m.	1.7	0.9	3.5
2:00 p.m.	2.0	2.1	1.8
3:00 p.m.	0.6	0.4	1.0
4:00 p.m.	3.2	4.0	1.5
5:00 p.m.	2.2	2.7	1.0
6:00 p.m.	2.1	2.1	2.0
7:00 p.m.	0.6	0.6	0.8
8:00 p.m.	0.8	0.9	0.8
9:00 p.m.	0.7	0.8	0.5
10:00 p.m.	0.2	0.2	0.0
11:00 p.m.	0.2	0.2	0.3



**Counter F**

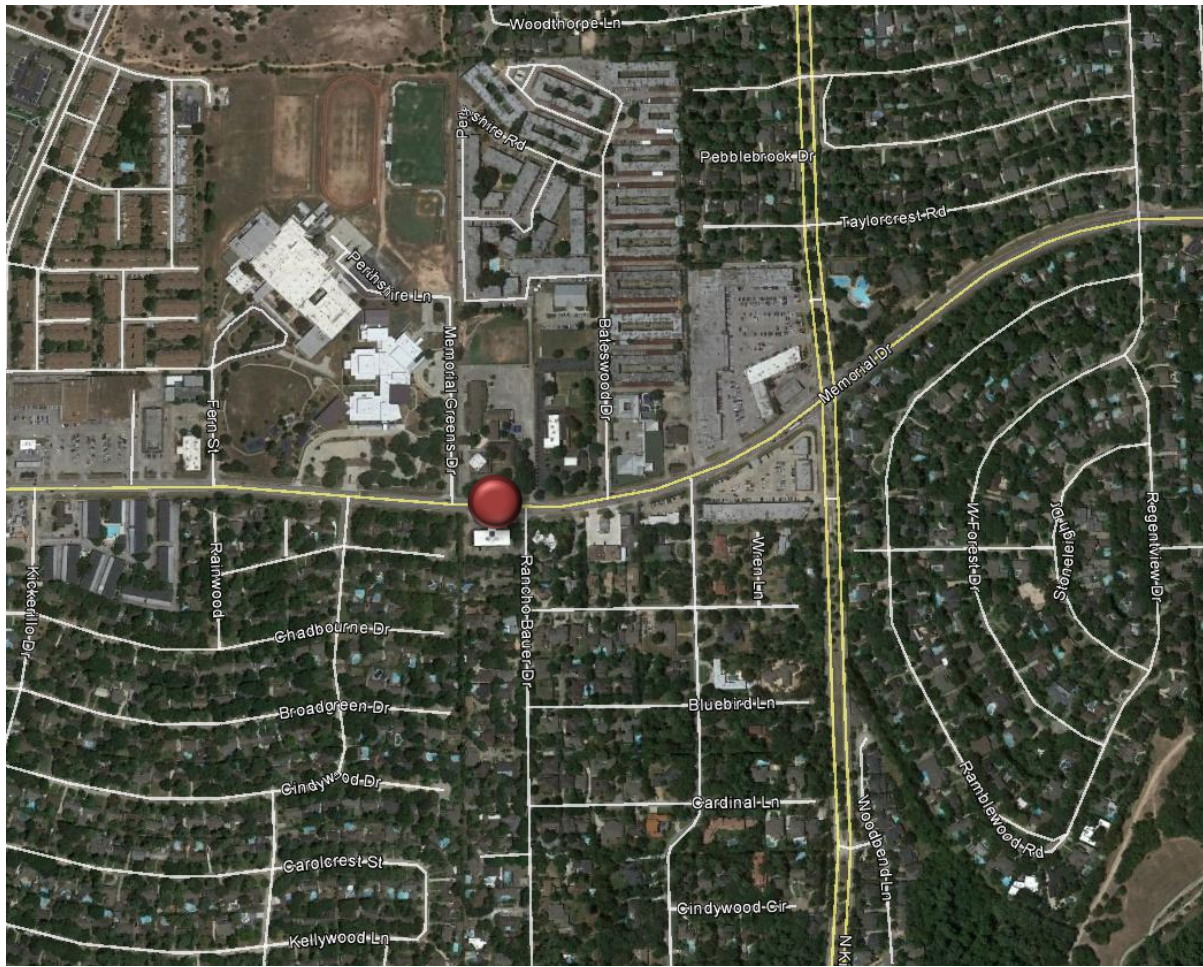
Memorial Drive Eastbound at Rancho Bauer Drive

Location Information	
Location Name	Memorial Drive Eastbound at Rancho Bauer Drive
Location Description	Sidewalk along Memorial Drive Eastbound West of Rancho Bauer Drive
Jurisdiction	City of Houston
Agency Deployed	Houston-Galveston Area Council/Texas Transportation Institute
GPS Coordinates	29°46'11.54"N, 95°35'39.05"W
Surrounding Land Uses	North Institutional (Churches, Meadow Wood Elementary School, Spring Forest Middle School), Multi-Family Residential
	South Office, Single-Family Residential
	East Commercial/Retail, Single-Family Residential
	West Institutional (Meadow Wood Elementary School, Spring Forest Middle School), Single-Family Residential
What object was device secured to?	Sign Post (School Zone Sign)
Sidewalk Width	5'
Buffer Width	5'
Street Width*	Four-Lane Undivided Roadway
Parallel Parking	None
Landscaping or Trees	No
Sidewalk Pavement Type	Concrete
ADA Ramps	Yes
Sidewalk Condition	Good
Speed Limit*	35 miles per hour
Street Lighting	Yes
Street Traffic Volume*	24,808 (14201 Memorial Drive: 2011)
Transit	Nearby (METRO Bus Stop 100 feet east at Rancho Bauer Drive/Memorial Drive)
Shade	No
Have counts been collected by H-GAC at this location before?	No

Note: Due to technical difficulties, Counter F was deployed for a shorter period than the other counters (Wednesday, November 11, 2015 – Sunday, November 15, 2015).

Trends
<ul style="list-style-type: none"> <li>Usage on weekdays and weekends is about the same.</li> <li>Usage remains relatively steady throughout the day.</li> </ul>

**Location Information: Map**



**Location Information: Photos**

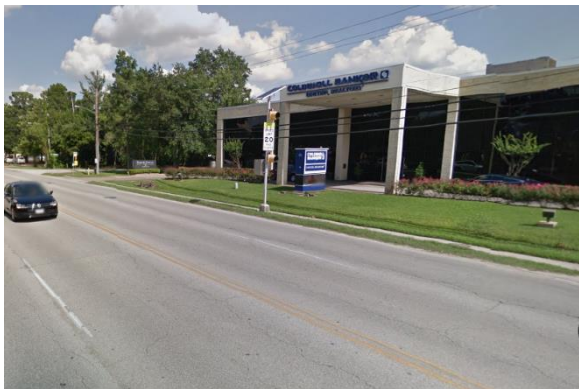


Image 25: Sidewalk along Memorial Drive Facing East

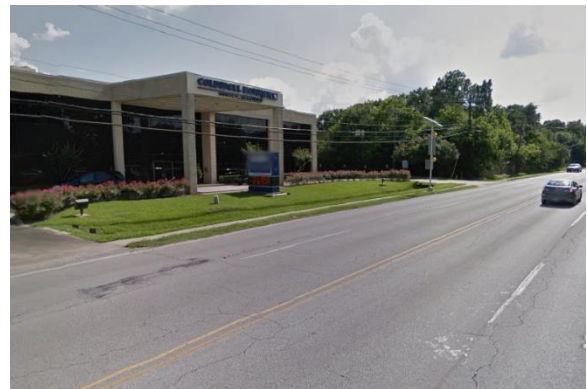
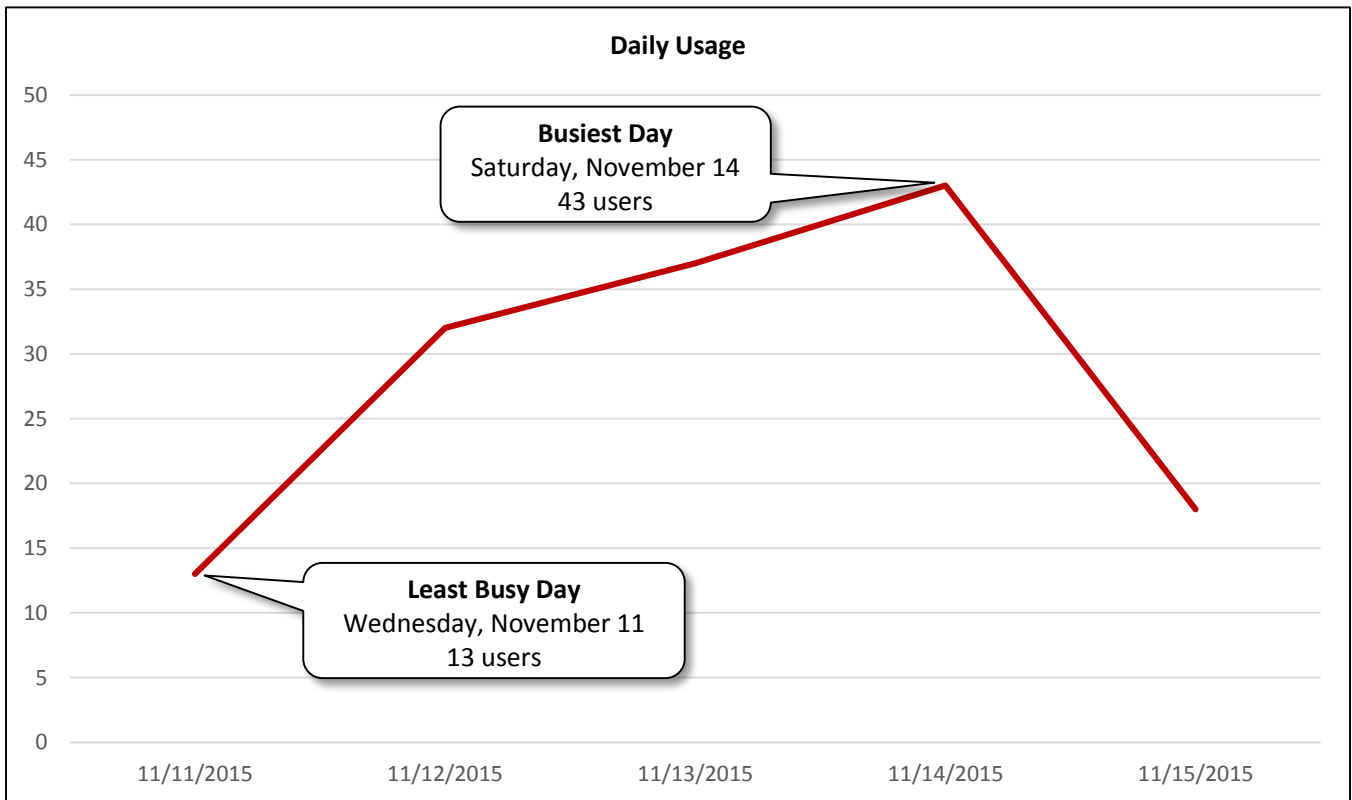


Image 26: Sidewalk along Memorial Drive Facing West

Daily Usage				
Date	Users	Select Weather Data*		
		High Temperature (°F)	Low Temperature (°F)	Precipitation (inches)
Wednesday, November 11, 2015	13	84	64	0.11
Thursday, November 12, 2015	32	73	60	0
Friday, November 13, 2015	37	69	59	0
Saturday, November 14, 2015	43	70	55	0
Sunday, November 15, 2015	18	75	55	0

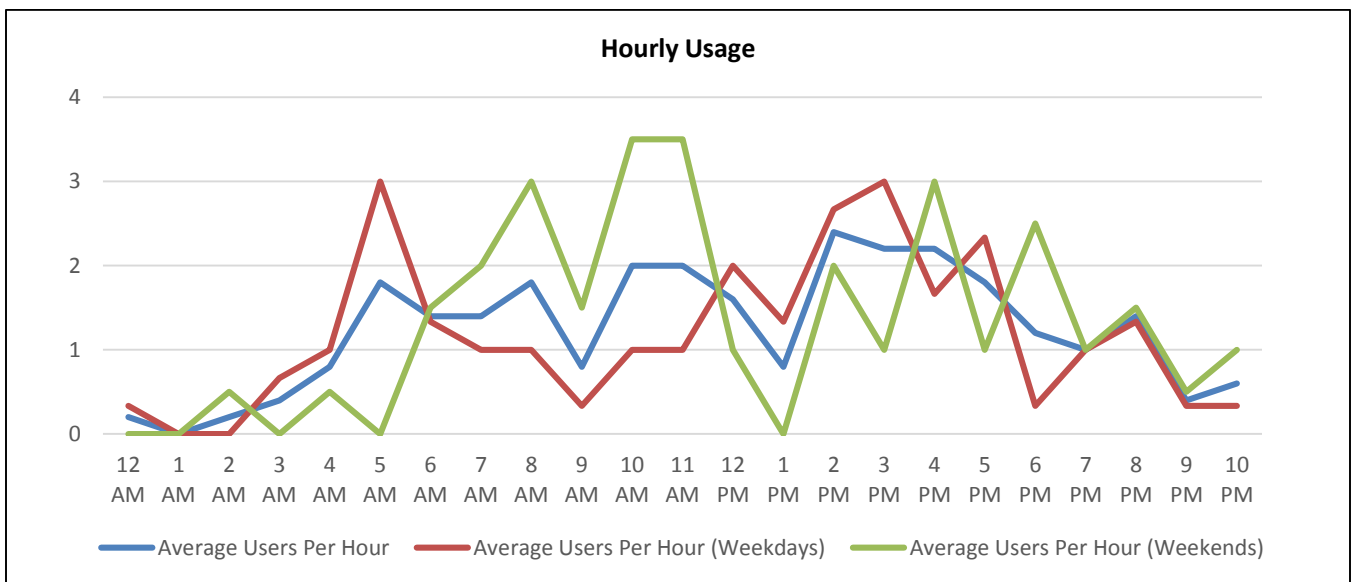
<b>Total</b>	143
<b>Average Daily Usage</b>	29
<b>Average Daily Usage (Weekday)</b>	27
<b>Average Daily Usage (Weekend)</b>	31

\*Weather conditions recorded at KSGR.





Hourly Usage			
Time of Day	Average Users Per Hour	Average Users Per Hour (Weekdays)	Average Users Per Hour (Weekends)
12:00 a.m.	0.2	0.3	0.0
1:00 a.m.	0.0	0.0	0.0
2:00 a.m.	0.2	0.0	0.5
3:00 a.m.	0.4	0.7	0.0
4:00 a.m.	0.8	1.0	0.5
5:00 a.m.	1.8	3.0	0.0
6:00 a.m.	1.4	1.3	1.5
7:00 a.m.	1.4	1.0	2.0
8:00 a.m.	1.8	1.0	3.0
9:00 a.m.	0.8	0.3	1.5
10:00 a.m.	2.0	1.0	3.5
11:00 a.m.	2.0	1.0	3.5
12:00 p.m.	1.6	2.0	1.0
1:00 p.m.	0.8	1.3	0.0
2:00 p.m.	2.4	2.7	2.0
3:00 p.m.	2.2	3.0	1.0
4:00 p.m.	2.2	1.7	3.0
5:00 p.m.	1.8	2.3	1.0
6:00 p.m.	1.2	0.3	2.5
7:00 p.m.	1.0	1.0	1.0
8:00 p.m.	1.4	1.3	1.5
9:00 p.m.	0.4	0.3	0.5
10:00 p.m.	0.6	0.3	1.0
11:00 p.m.	0.2	0.3	0.0



## Participants

Energy Corridor District  
[www.energycorridor.org](http://www.energycorridor.org)

Houston-Galveston Area Council: Pedestrian-Bicyclist Planning  
[www.h-gac.com/go/pedbike](http://www.h-gac.com/go/pedbike)

Texas Transportation Institute  
<http://tti.tamu.edu/>