



# San Jacinto River Waste Pits Superfund Site TCRA and RI/FS Update

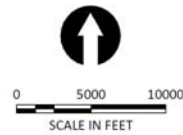
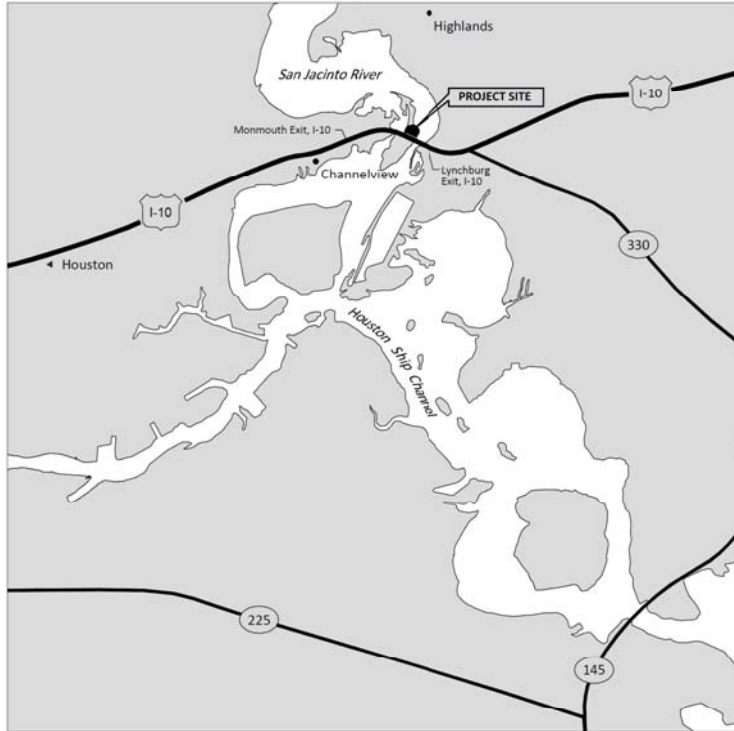
Presented by  
David Keith

February 23, 2011

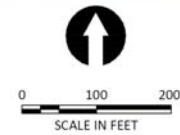


# Location

### VICINITY MAP



### SITE MAP

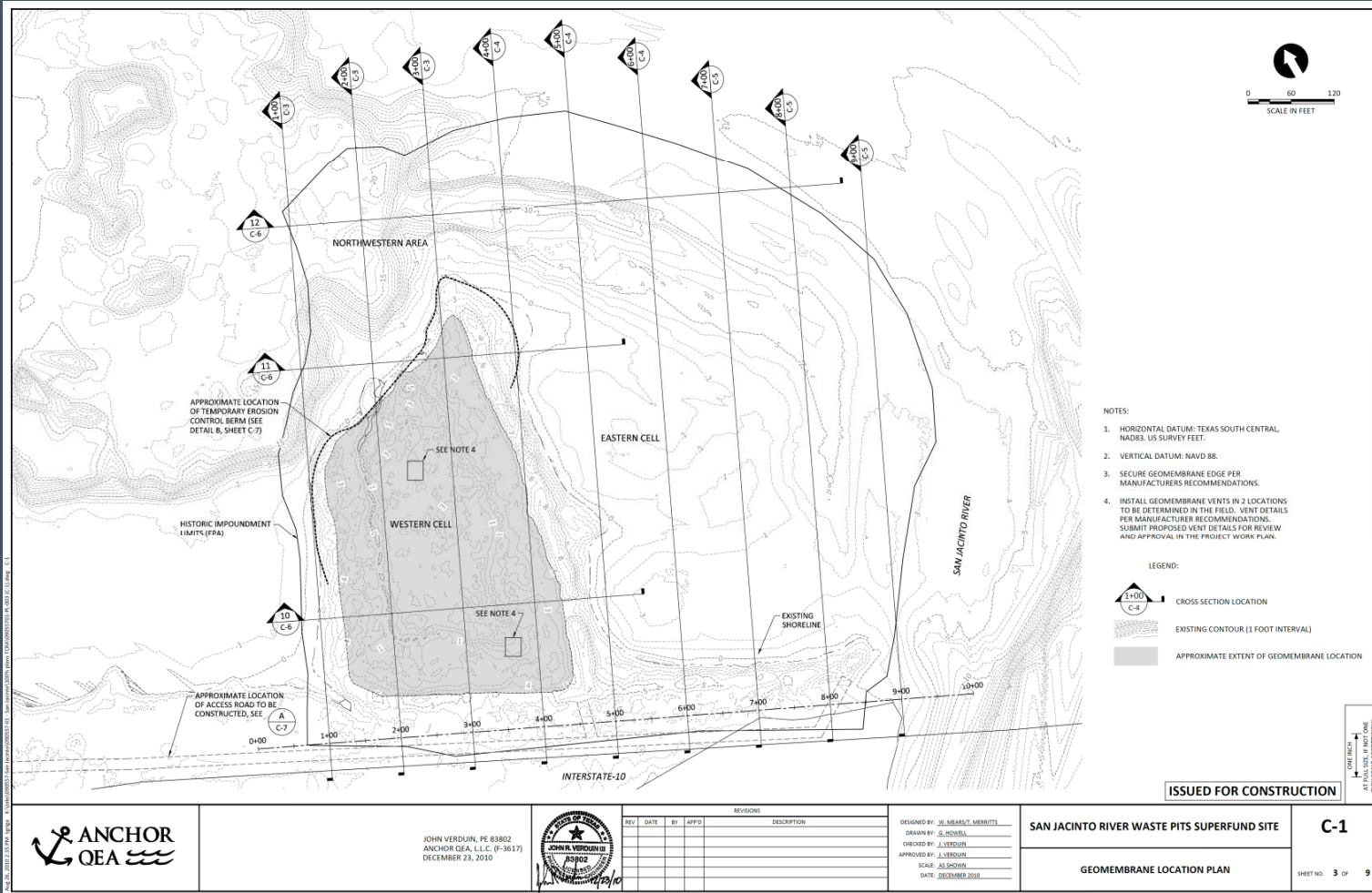




# Location Map – Stockpiling and Administration Areas



# Construction Plans- Geomembrane Placement



JOHN VERDURN, PE 83802  
 ANCHOR QEA, L.L.C. (F-3617)  
 DECEMBER 23, 2010



| REV | DATE | BY | APPD | DESCRIPTION |
|-----|------|----|------|-------------|
|     |      |    |      |             |
|     |      |    |      |             |
|     |      |    |      |             |

DESIGNED BY: W. MESSER, T. HERBERTS  
 DRAWN BY: S. MONTAL  
 CHECKED BY: J. VERDURN  
 APPROVED BY: J. VERDURN  
 SCALE: AS SHOWN  
 DATE: DECEMBER 2010

SAN JACINTO RIVER WASTE PITS SUPERFUND SITE

GEOMEMBRANE LOCATION PLAN

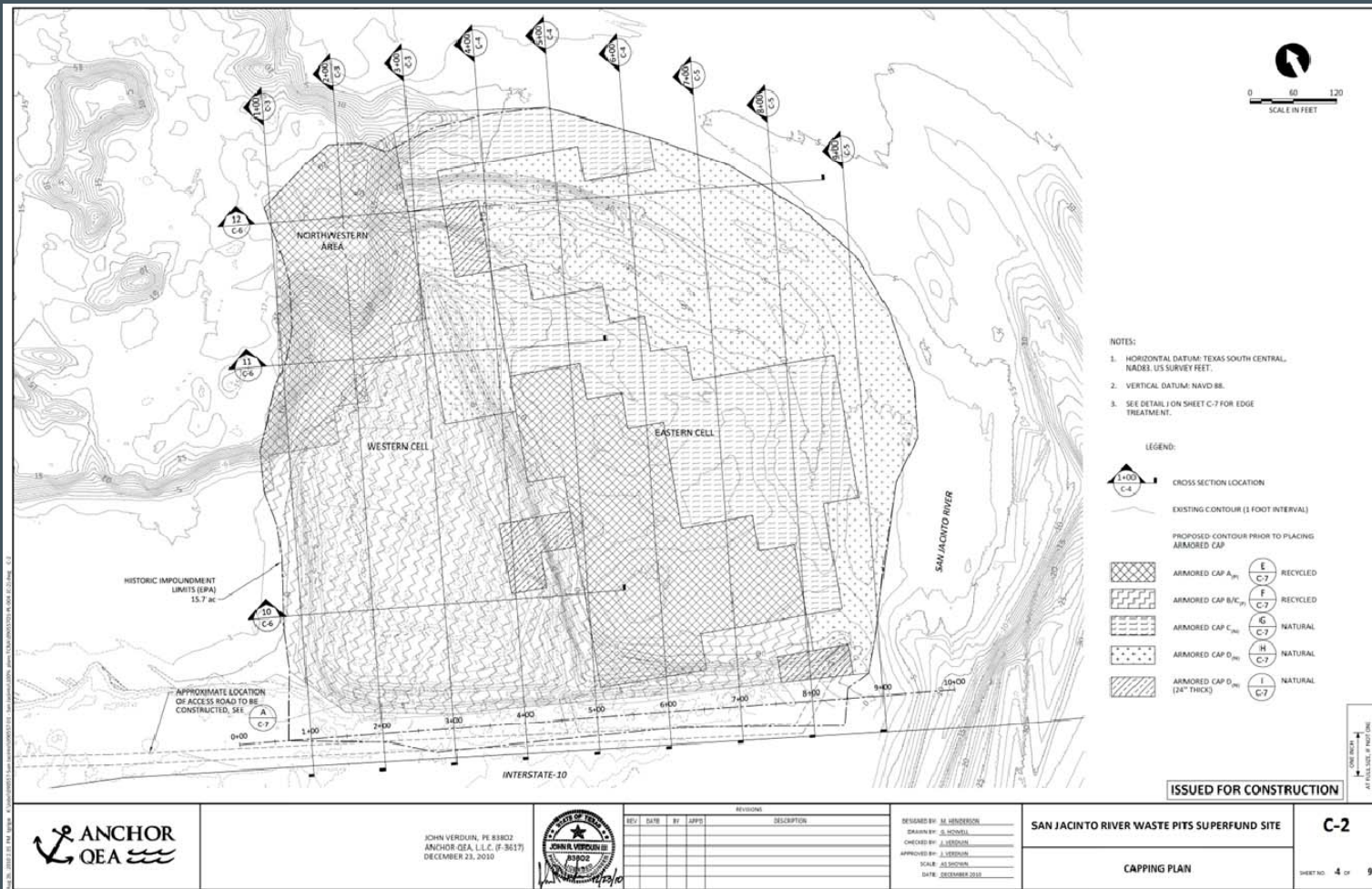
C-1

SHEET NO. 3 OF 9





# Construction Plans - Armor Cap Areas



JOHN VERDOLIN, PE 81802  
ANCHOR QEA, L.L.C. (F-3617)  
DECEMBER 23, 2010



| REV | DATE | BY | APP'D | REVISIONS | DESCRIPTION |
|-----|------|----|-------|-----------|-------------|
|     |      |    |       |           |             |
|     |      |    |       |           |             |
|     |      |    |       |           |             |

DESIGNED BY: M. ANDERSON  
DRAWN BY: J. SCHILL  
CHECKED BY: J. ANDERSON  
APPROVED BY: J. VERDOLIN  
SCALE: AS SHOWN  
DATE: DECEMBER 2010

SAN JACINTO RIVER WASTE PITS SUPERFUND SITE

C-2

CAPPING PLAN

SHEET NO. 4 OF 9



# Activities to Date

- Installed the 2<sup>nd</sup> phase fencing in the TxDOT right-of-way and around the Big Star property
- Installed the signs and buoys at the impoundments
- Cleared and grubbed the central berm of the waste impoundments

## Activities to Date (continued)

- Entered into an access agreement with TxDOT
- Entered into a lease on the LaBarge property for material stockpiling and transloading by truck and barge
- Entered into a lease on the Market Street property for locating a construction administration area
- Submitted to EPA cultural resource documentation
- Submitted to EPA 401 and 404(b)(1) documentation

## Activities to Date (continued)

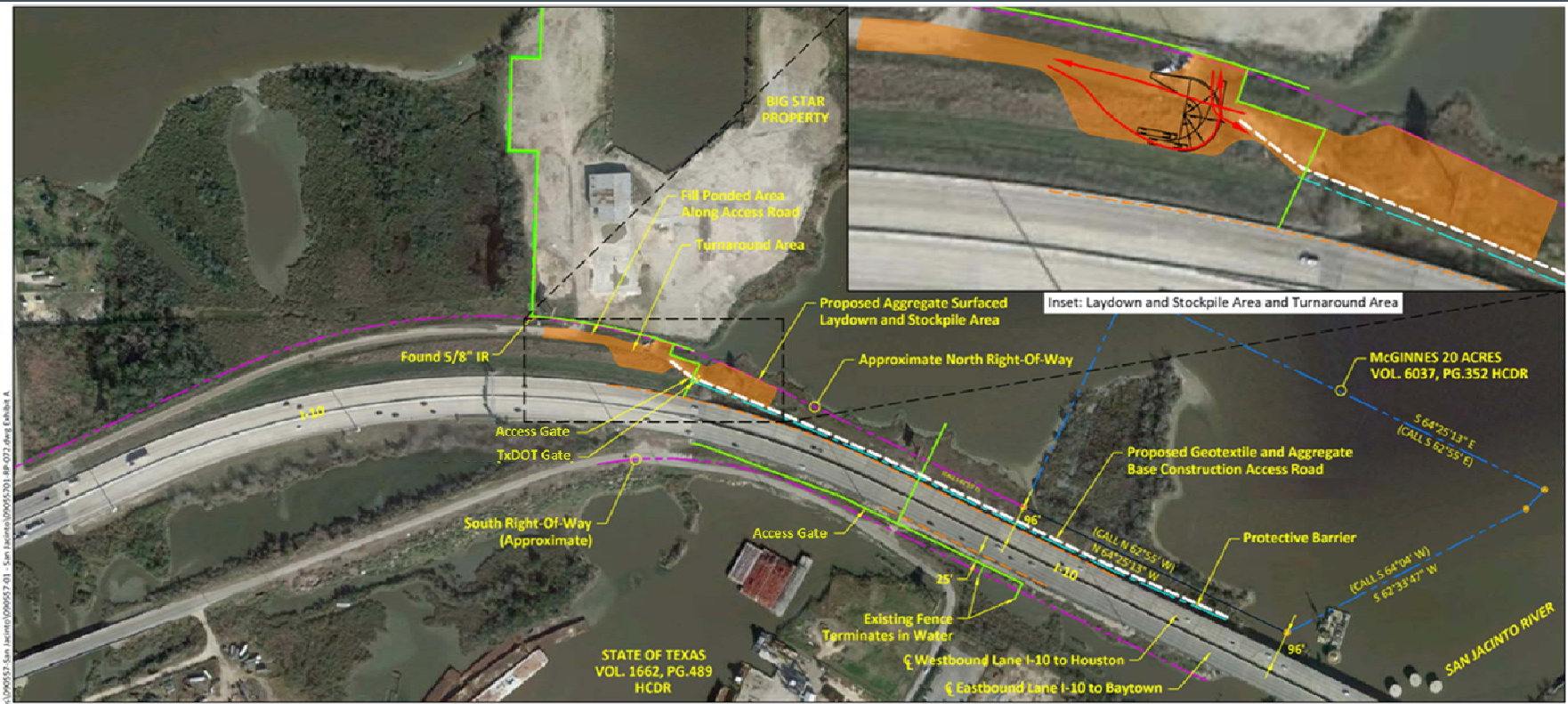
- Submitted to EPA a flood level analysis and documentation
- Completed contractor Health and Safety Plan, Construction Work Plan, Environmental Protection Plan, and the Storm Water Pollution Prevention Plan
- Participating in community outreach meetings



## Activities to Date (continued)

- Constructing access road in TxDOT ROW
- Making improvements to administrative area
- Stockpiling materials at LaBarge Facility
- Conducting pre-construction surveying
- Placing geotextile and cap in eastern cell

# Site Fencing and Access

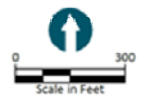


SOURCE: Martin Survey Associates, Inc. survey dated 2/23/2010 - 3/03/2010.  
 10/10/2011 1:43pm  
 10/10/2011 1:43pm

SOURCE: Martin Survey Associates, Inc. survey dated 2/23/2010 - 3/03/2010.

**LEGEND:**

- McGinnes Property Boundary
- Big Star Property Boundary
- Texas Department of Transportation (TxDOT) Right-Of-Way (Approximate)
- Column Caps
- Laydown and Stockpile Area and Turnaround Area
- Existing Fence





# Site Fencing

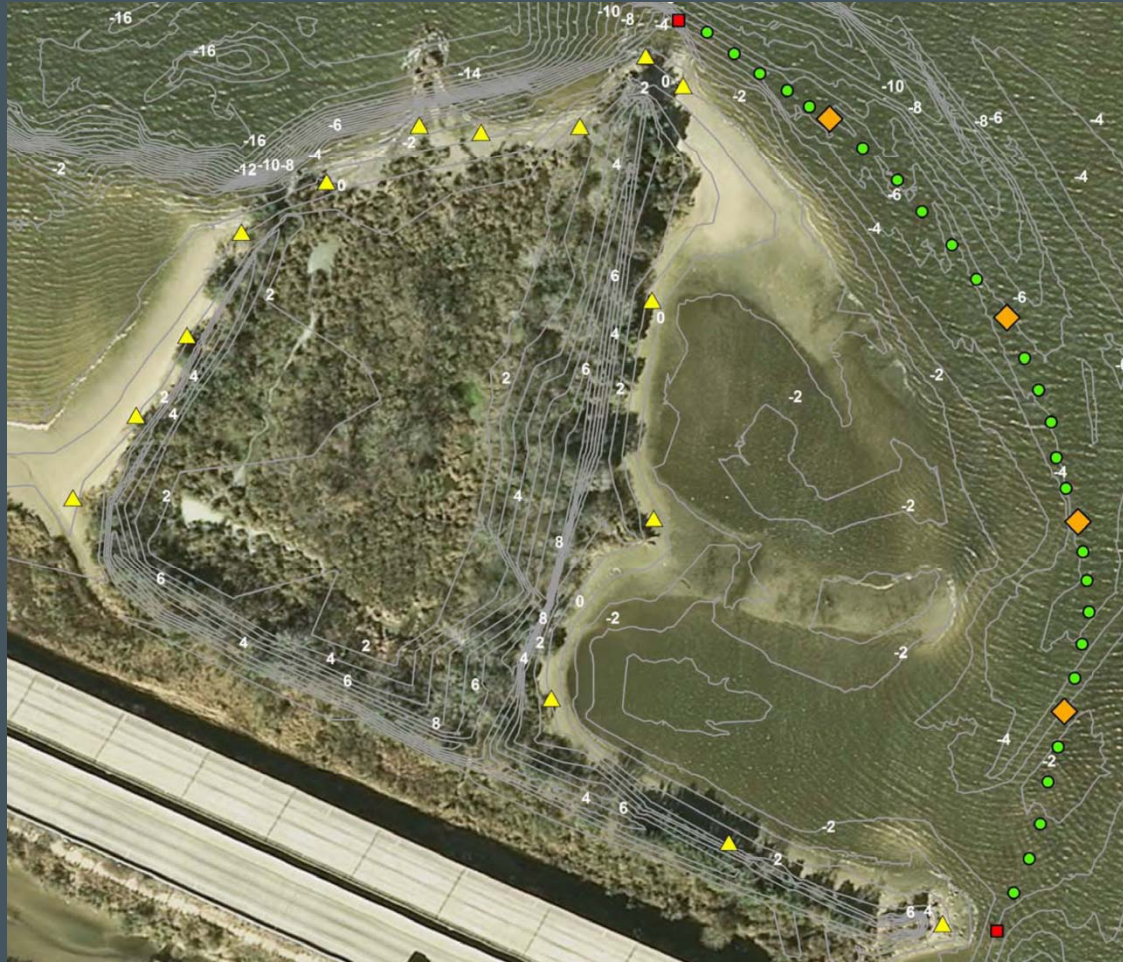
Completed Fence  
Installation South of I-10

Southwest Corner of Big Star  
Property Fence Installation





# Buoys and Signs



# Buoys and Signs

## Ball and Regulatory Buoy Installation



## Trilingual Public Notice Signs Placed on the Western Peninsula





# Access Road

Before



After





# Materials Stockpiling

Delivery of Armor Cap D  
Material

Managing Armor Cap D  
Material



# Administration Area

Office Trailer Delivery

Electrical Utilities Setup





# Barge Mobilization

Installation of Bow Sections  
on Transport Barge

Installation of Steel Rail  
on Starboard Side of Barge





# Armor Cap Placement

Placement of Armor Cap D  
Material on Eastern Cell

Placement of Armor Cap D  
Material on Eastern Cell



# Proposed TCRA Project Schedule

- Estimated Access Road Completion
  - February 25, 2011
- Armor Cap Placement
  - Waterside placement began February 17, 2011
  - Landside preparation estimated to begin February 25, 2011
  - Landside placement estimated to begin April 4, 2011
- Estimated Construction Completion
  - September 1, 2011



# Remedial Investigation/Feasibility Study

## Milestones

- Completed and received approval on Sediment Sampling and Analysis Plan
  - Implemented sediment sampling and analysis plan
- Completed and received approval of RI/FS Work Plan
- Completed and received approval of Fate and Transport Modeling Work Plan
- Completed and received approval of Technical Memorandum on Bioaccumulation
  - Implemented tissue sampling and analysis plan

## RI/FS (continued)

- Milestones (continued)
  - Completed and received approval of Groundwater Sampling and Analysis Work Plan
    - Implemented groundwater sampling and analysis work plan
  - Completed and received approval of Soil Sampling Work Plan
    - Implemented soil sampling and analysis work plan
- Draft Preliminary Site Characterization Report is due July 20, 2011
  - This report will include data and interpretations of data collected up to that time (e.g., sediment, soil, groundwater, tissue, hydrodynamic).



# Future RI/FS Activities

- Exposure Assessment
- Toxicological and Epidemiological Studies
- Baseline Human Health Risk Assessment
- Baseline Ecological Risk Assessment
- Treatability Studies
- Remedial Investigation Report
- Remedial Alternatives Evaluation
- Feasibility Study