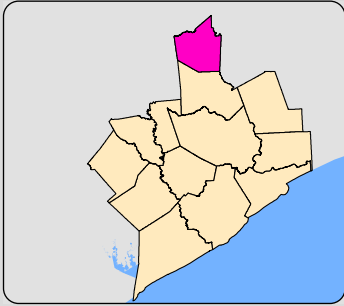
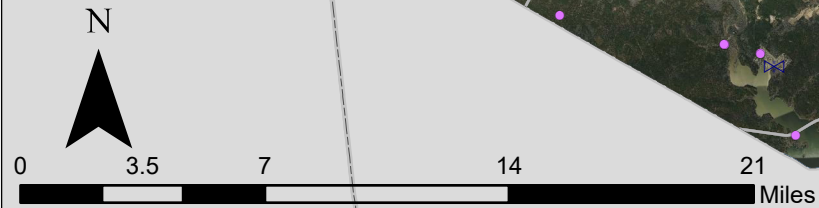
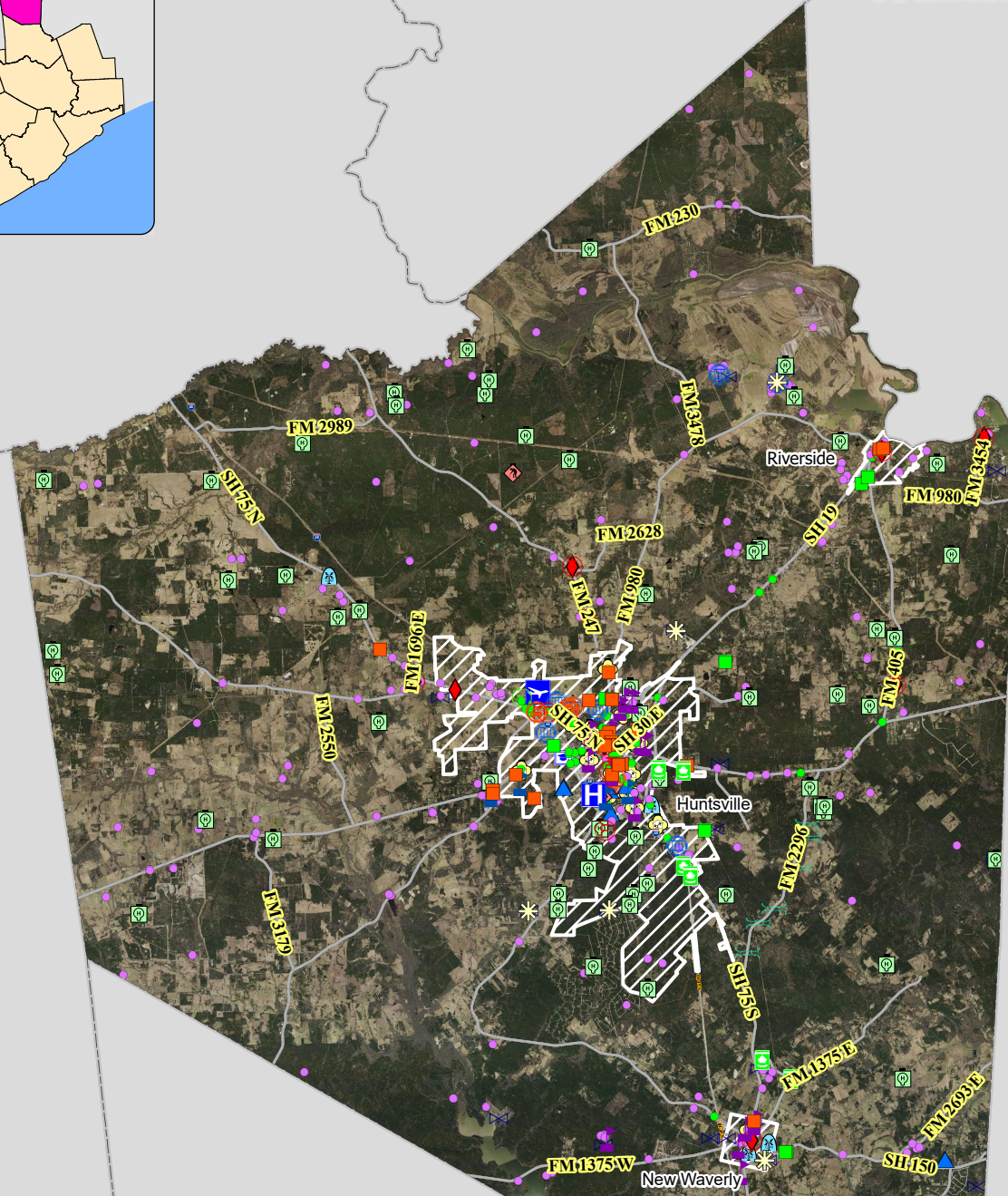


Walker County Planning Area Map



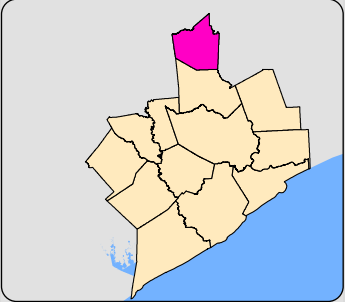
Critical Facilities

- Airport
- Correctional Facility
- Dam
- EMS
- Electric Substation
- Fire Station
- Hospital
- Local Emergency Operation Center
- Police Station
- Power Plant
- Private School
- Public School
- Shelter
- Solid Waste Landfill
- Toxic Release Inventory Facility
- Wastewater Treatment Plant
- Roadway Bridge
- Pharmacies
- Dialysis
- Railroad Bridges
- Urgent Care Facilities
- Potable Water Well
- Petroleum Storage Tanks
- Nursing Homes
- FM Transmission Towers
- Courthouses
- Child Care Centers
- Cellular Towers
- AM Transmission Towers
- All Places Of Worship
- College University Campuses



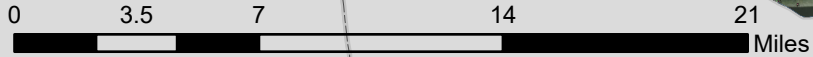
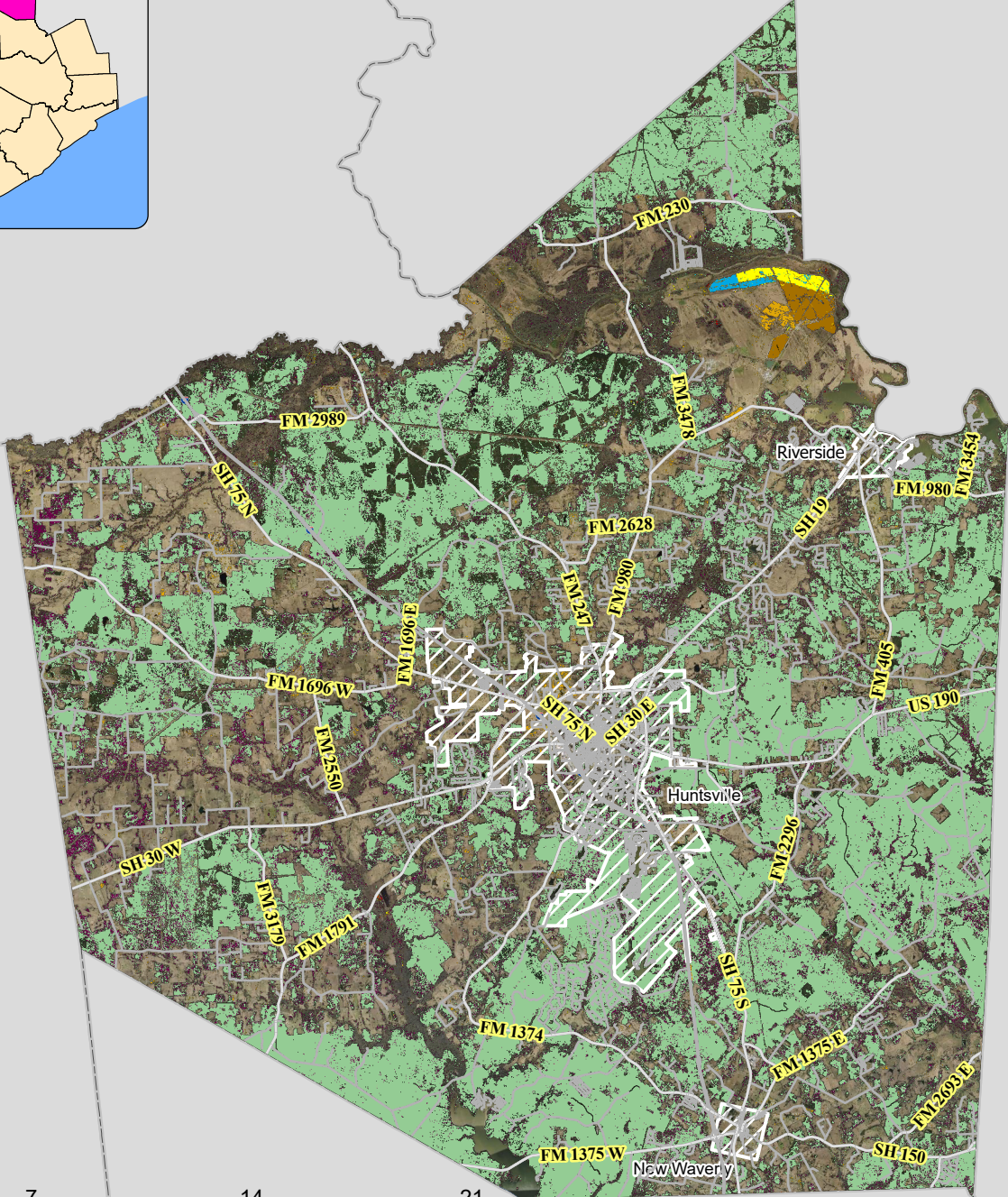
Sources:
Facilities : Regional Land Use Information System,
H-GAC, 2023

Walker County: Crop Cover



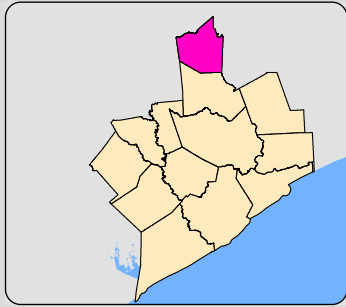
Crop Cover Class

- Alfalfa
- Aquaculture
- Cantaloupes
- Citrus
- Corn
- Cotton
- Dbl Crop WinWht/Cotton/Soybeans
- Deciduous Forest
- Dry Beans
- Evergreen Forest
- Herbaceous Wetlands
- Mixed Forest
- Oats
- Olives
- Other Hay/Non Alfalfa
- Pecans
- Rice
- Rye
- Sod/Grass Seed
- Sorghum
- Soybeans
- Spring Wheat
- Sugarcane
- Sunflower
- Watermelons
- Winter Wheat

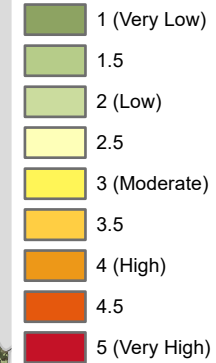


Sources:
 USDA - United States Department of Agriculture,
 National 2022 CDL

Walker County: Wildfire Risk Assessment

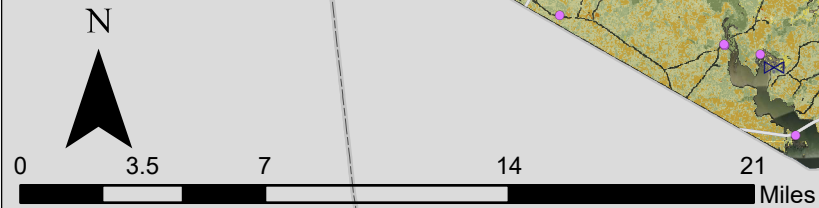
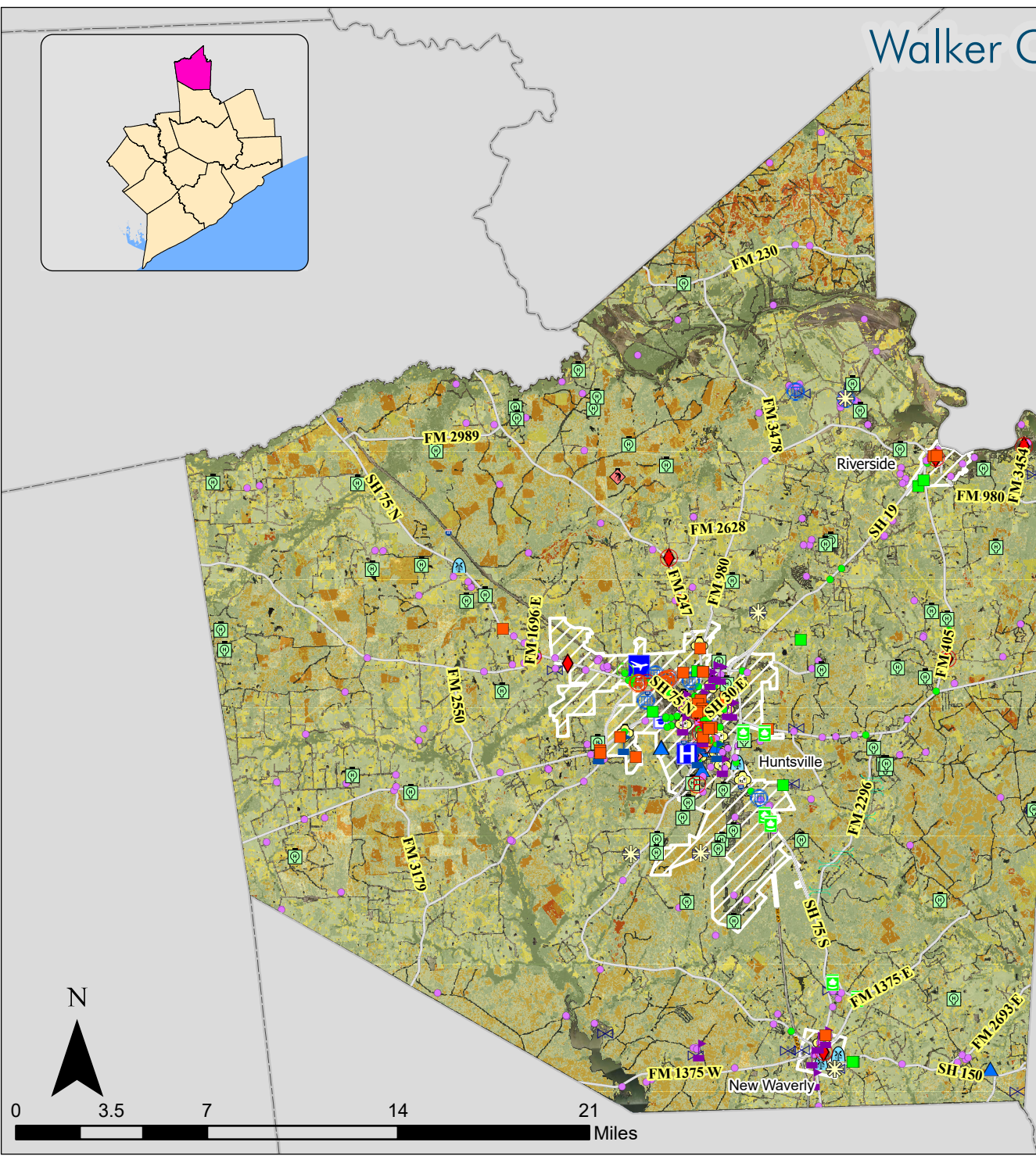


Characteristic Fire Intensity Scale



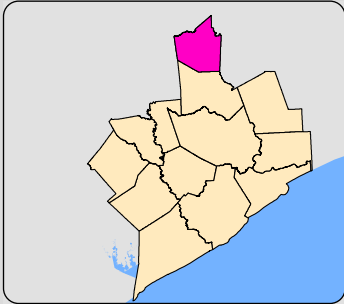
Critical Facilities

- Airport
- Correctional Facility
- Dam
- EMS
- Electric Substation
- Fire Station
- Hospital
- Local Emergency Operation Center
- Police Station
- Power Plant
- Private School
- Public School
- Shelter
- Solid Waste Landfill
- Toxic Release Inventory Facility
- Wastewater Treatment Plant
- Roadway Bridge
- Pharmacies
- Dialysis
- Railroad Bridges
- Urgent Care Facilities
- Potable Water Well
- Petroleum Storage Tanks
- Nursing Homes
- FM Transmission Towers
- Courthouses
- Child Care Centers
- Cellular Towers
- AM Transmission Towers
- All Places Of Worship
- College University Campuses



Sources:
 Texas Wildfire Risk Assessment
 Texas A & M Forest Service, 2023

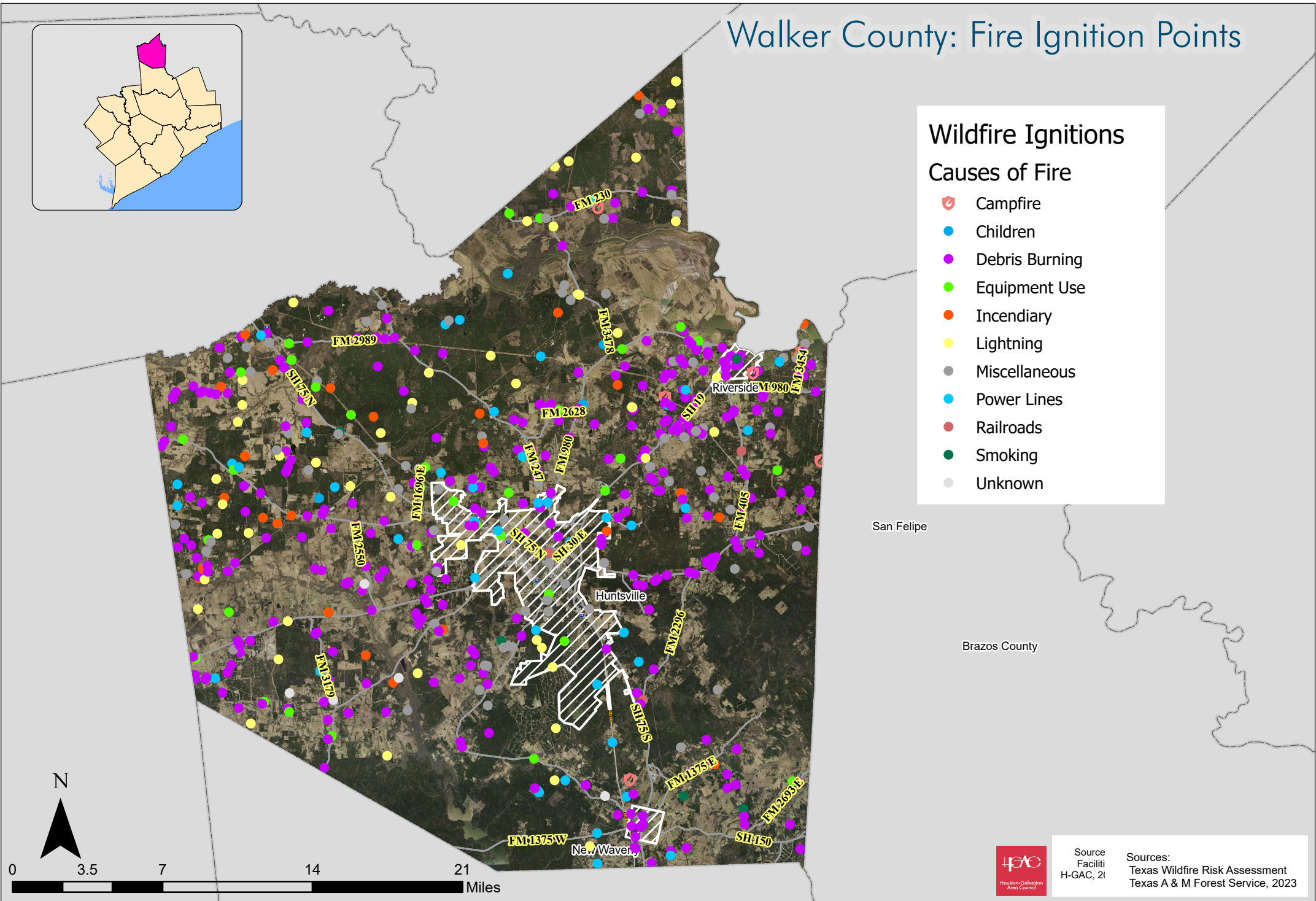
Walker County: Fire Ignition Points



Wildfire Ignitions

Causes of Fire

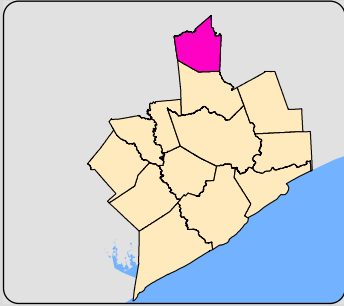
- Campfire
- Children
- Debris Burning
- Equipment Use
- Incendiary
- Lightning
- Miscellaneous
- Power Lines
- Railroads
- Smoking
- Unknown



Source:
Facility:
H-GAC, 2023

Sources:
Texas Wildfire Risk Assessment
Texas A & M Forest Service, 2023

Walker County: Floodplain

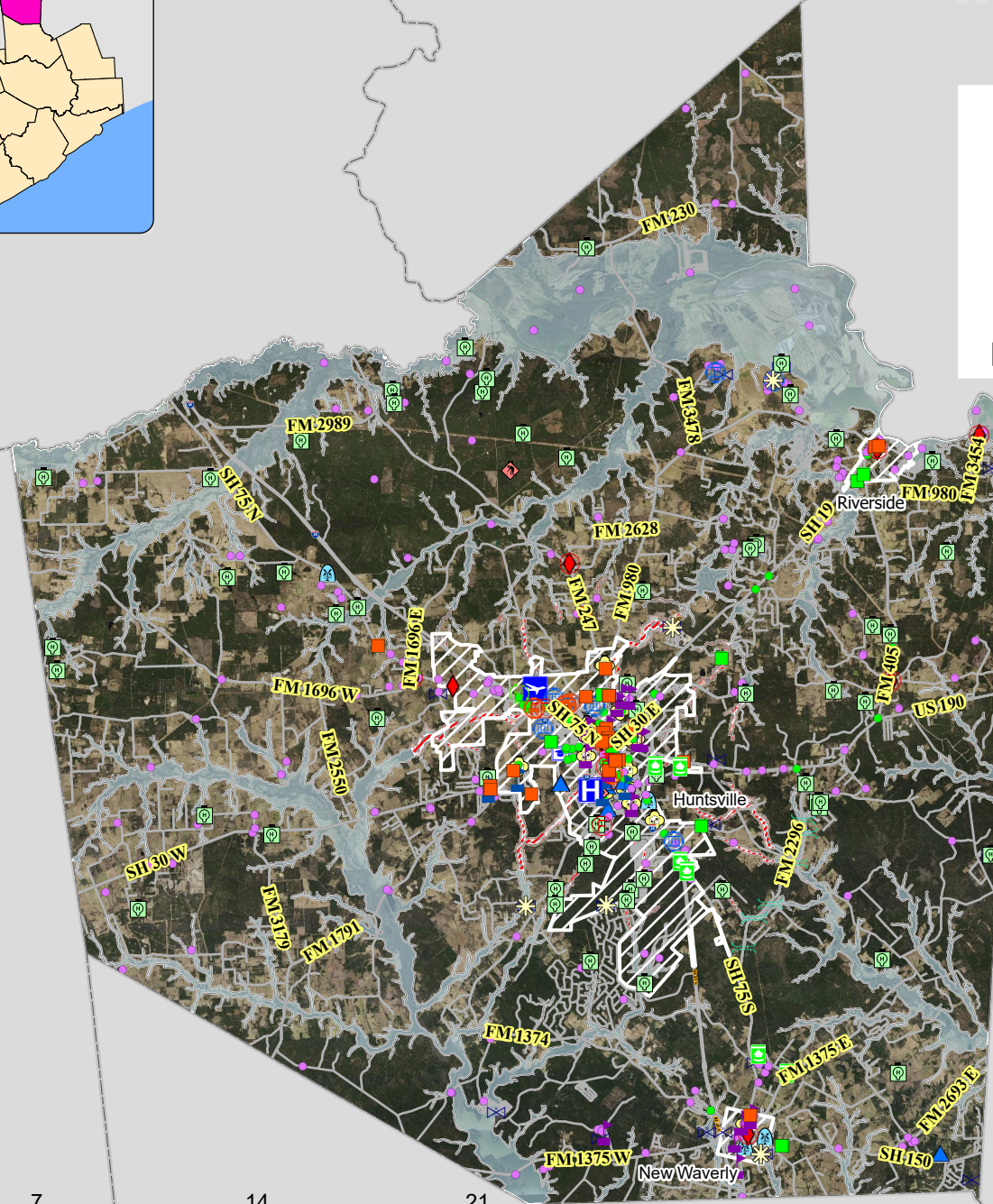
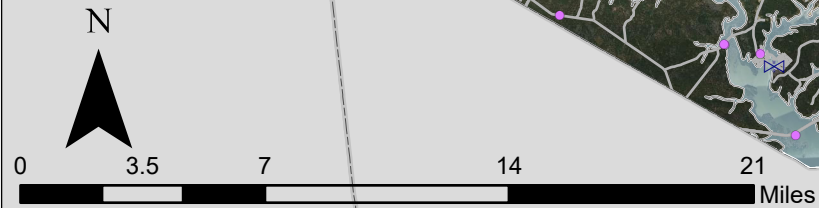


FLOODPLAIN ZONE

- 0.1 PCT ANNUAL CHANCE OF FLOOD HAZARD
- 0.2 PCT ANNUAL CHANCE OF FLOOD HAZARD
- FLOODWAY
- AREA OF MINIMAL FLOOD HAZARD

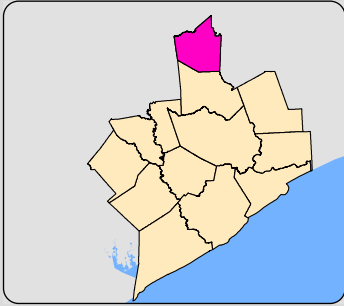
Critical Facilities

- Airport
- Correctional Facility
- Dam
- EMS
- Electric Substation
- Fire Station
- Hospital
- Local Emergency Operation Center
- Police Station
- Power Plant
- Private School
- Public School
- Shelter
- Solid Waste Landfill
- Toxic Release Inventory Facility
- Wastewater Treatment Plant
- Roadway Bridge
- Pharmacies
- Dialysis
- Railroad Bridges
- Urgent Care Facilities
- Potable Water Well
- Petroleum Storage Tanks
- Nursing Homes
- FM Transmission Towers
- Courthouses
- Child Care Centers
- Cellular Towers
- AM Transmission Towers
- All Places Of Worship
- College University Campuses



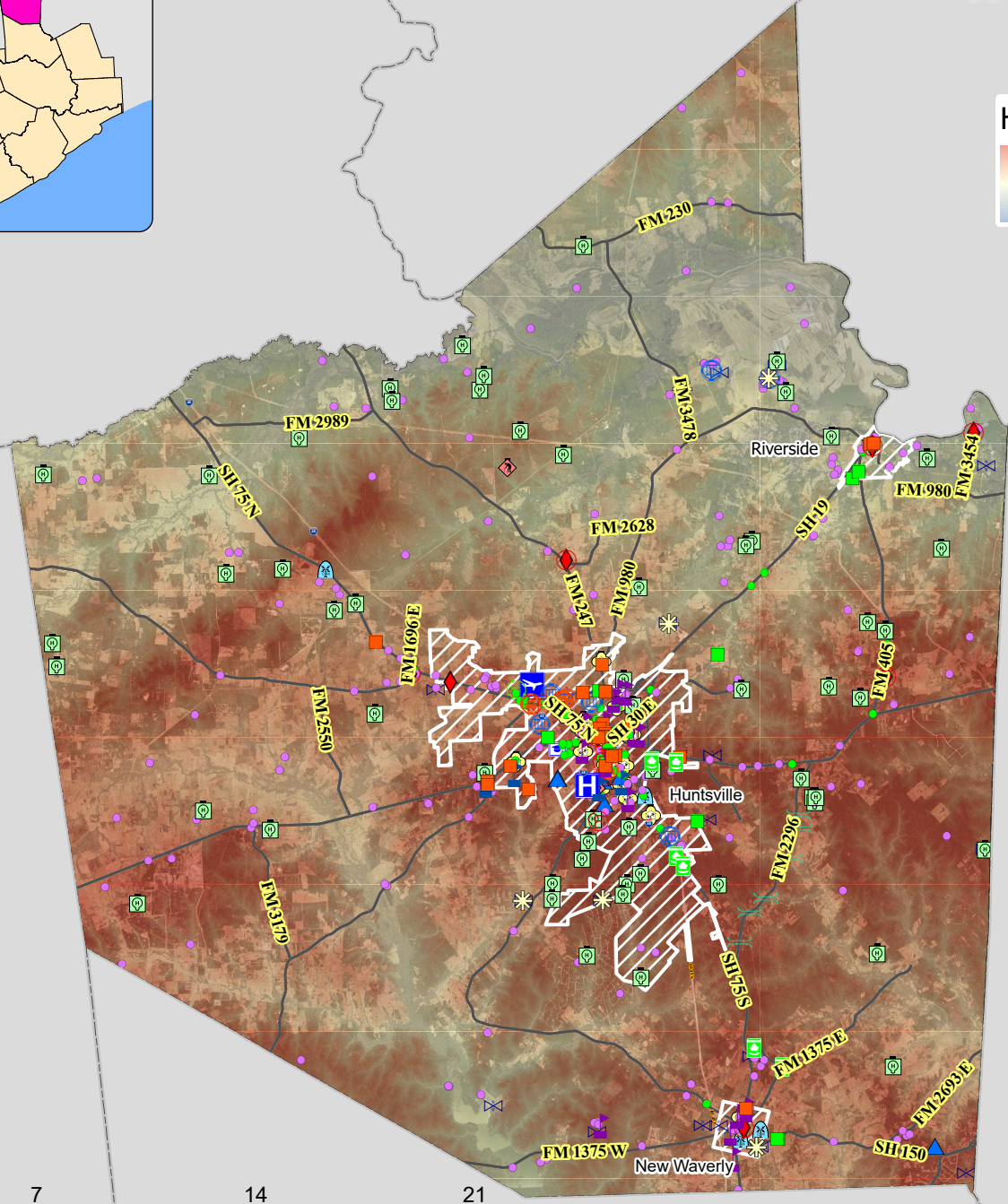
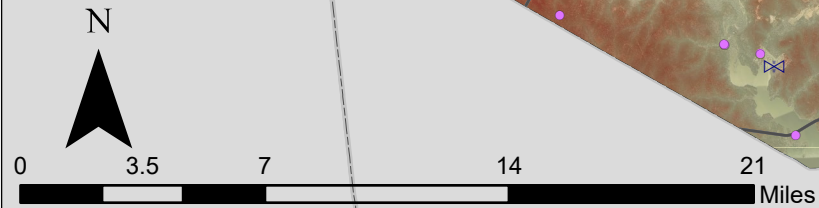
Sources:
 Facilities : Regional Land Use Information System, H-GAC, 2023
 FEMA NFHL 2020 Floodplain Data

Walker County: Elevation

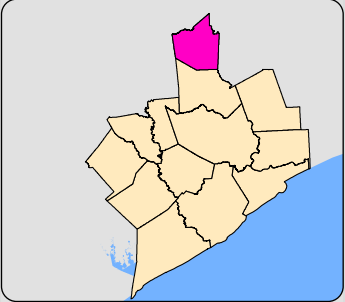


HGAC DEM 10m
 High : 153.774
 Low : -7.33451

- Critical Facilities**
- Airport
 - Correctional Facility
 - Dam
 - EMS
 - Electric Substation
 - Fire Station
 - Hospital
 - Local Emergency Operation Center
 - Police Station
 - Power Plant
 - Private School
 - Public School
 - Shelter
 - Solid Waste Landfill
 - Toxic Release Inventory Facility
 - Wastewater Treatment Plant
 - Roadway Bridge
 - Pharmacies
 - Dialysis
 - Railroad Bridges
 - Urgent Care Facilities
 - Potable Water Well
 - Petroleum Storage Tanks
 - Nursing Homes
 - FM Transmission Towers
 - Courthouses
 - Child Care Centers
 - Cellular Towers
 - AM Transmission Towers
 - All Places Of Worship
 - College University Campuses

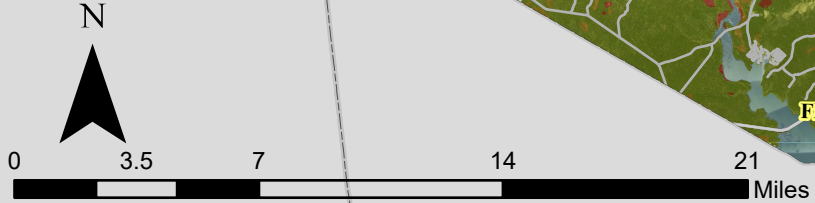
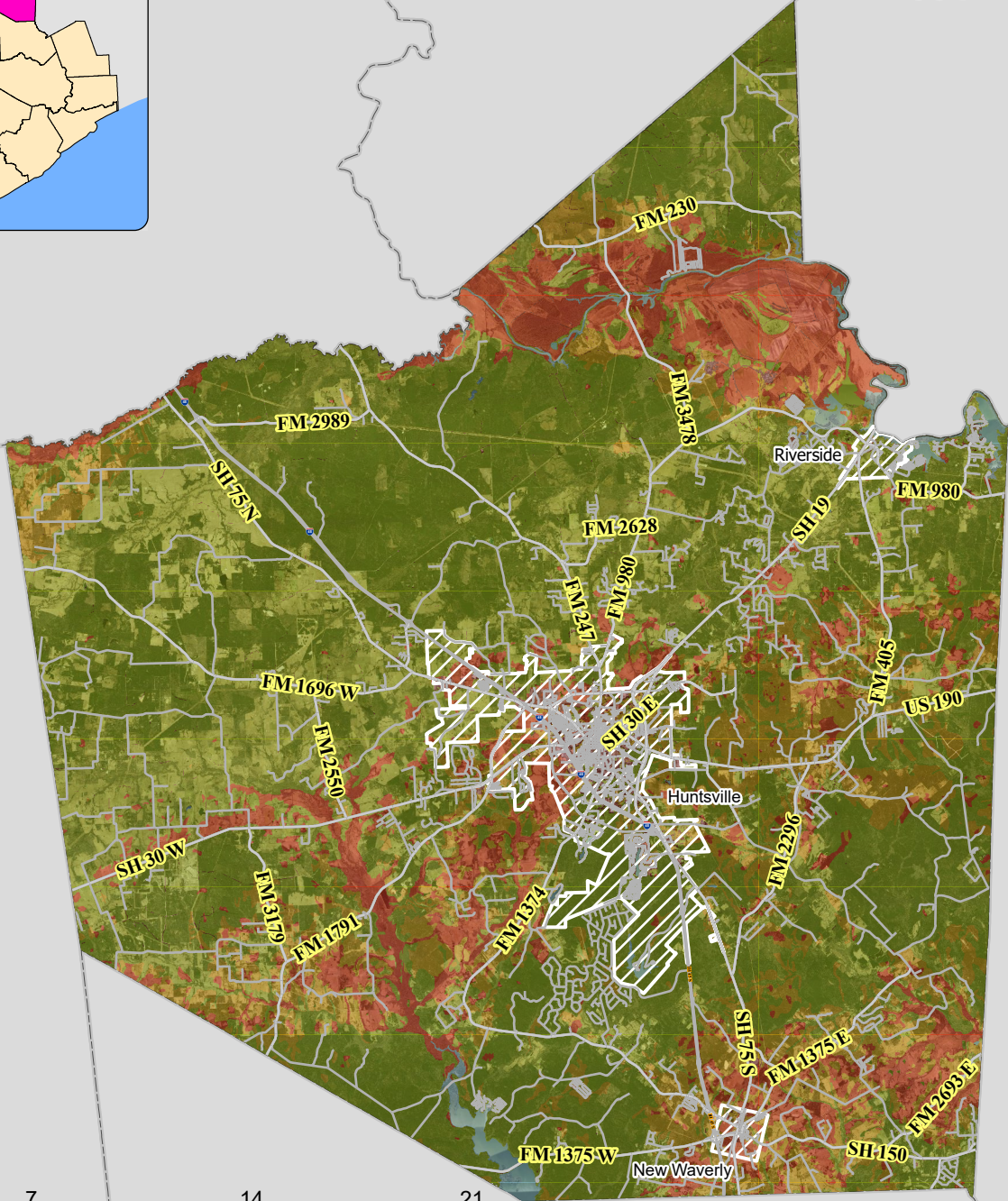


Walker County: Expansive Soil



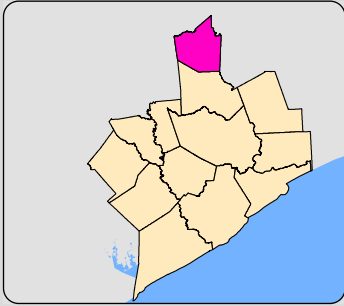
Expansive Soils Type

- Water
- Moderate swelling potential
- Low swelling potential
- High swelling potential
- Developed



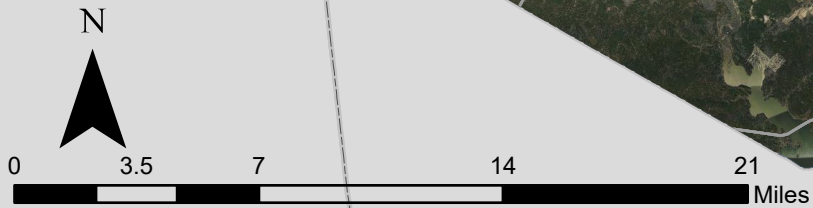
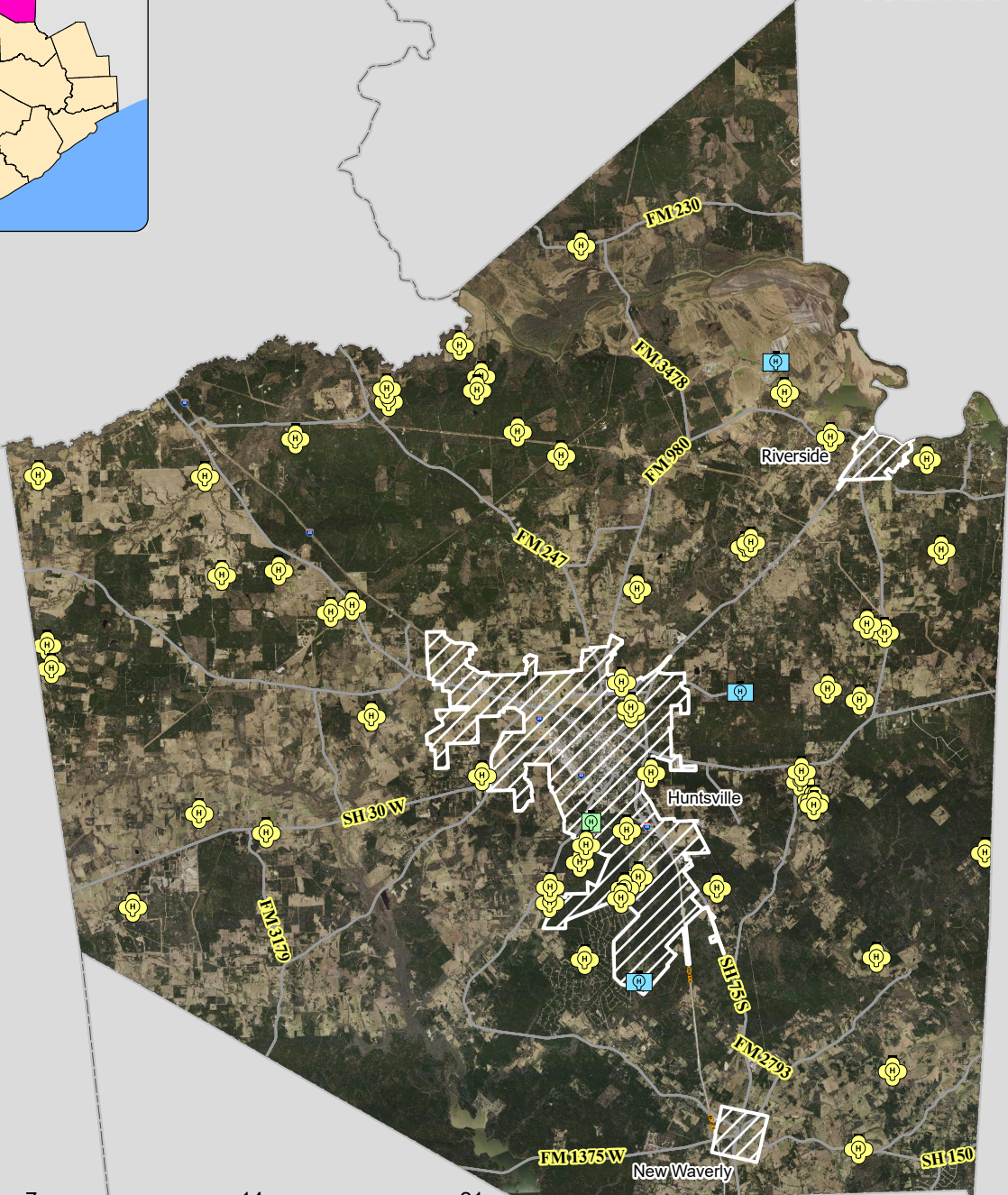
Sources:
Web Soil Survey (WSS) 2023

Walker County Planning Area Map



Owner Type

- Federal
- State
- Local Government
- Private



Sources:
National Inventory of Dams 2023