

Harris County

Storm Water Regulations for Automobile Salvage Yards

Presented by:

Denise Hall

Harris County Pollution Control





TEXAS POLLUTANT DISCHARGE ELIMINATION SYSTEM (TPDES) INDUSTRIAL GENERAL PERMIT FOR STORM WATER DISCHARGES ASSOCIATED WITH INDUSTRIAL ACTIVITY

- The TPDES General Permit Number is **TXR050000**
- Texas Commission on Environmental Quality (TCEQ) issued the permit **August 8, 2001**
- The permit expires **August 8, 2006**



TPDES INDUSTRIAL GENERAL PERMIT TXR050000

- The Permit Provides:
 - authorization for point source discharges of storm water associated with industrial activity to water in the state
 - including direct discharges and discharges to a municipal separate storm sewer system (MS4)



TYPICAL PROBLEMS

- **Improper management of automotive fluids**
- **Improper management of metal waste from welding and grinding**
- **Improper lead-acid battery storage**
- **Discharge of sediment from the site**



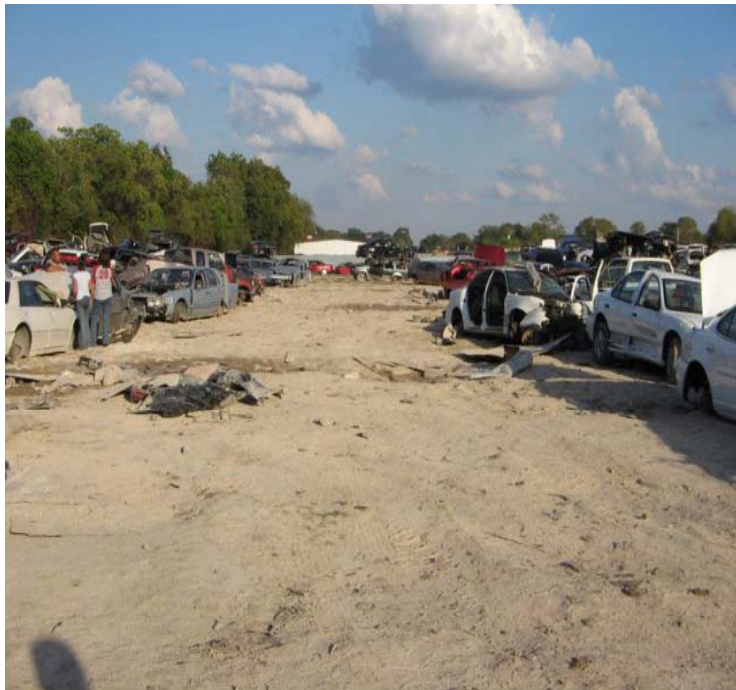
TYPICAL PROBLEMS



Leaking Automotive Fluids



TYPICAL PROBLEMS



No Erosion Control



POLLUTANT (S)



Pollutant means:

Dredged soil, solid waste, incinerator residue, sewage, garbage, sewage sludge, filter backwash, munitions, chemical wastes, biological materials, radioactive materials, heat, wrecked or discarded equipment, rock, sand, cellar dirt, industrial, municipal and agricultural waste discharged into the MS4 or any waters in the state, or waters of the United States



5015 Automobile Salvage Yards Sector M SECTOR - SPECIFIC REQUIREMENTS

Pollution Prevention Measures and Controls

- **Spill Prevention and Response Measures – inspect vehicles for leaking fluids**
- **Periodic Inspections – inspect equipment containing hydraulic or other fluids on a daily basis**
- **Employee Training Program - include training on management of used automotive fluids, metal waste and lead-acid batteries**



HARRIS COUNTY INSPECTION PROCESS

- SWP3 Evaluation
- Site Inspection
- Exit Meeting



SWP3 ELEMENTS

- List pollution prevention team members
- Certify non-storm water discharges
- Describe potential pollutants and sources
 - Inventory of exposed materials
 - Narrative description of activities
 - Site map
 - Spills and leaks
 - Sampling data



SWP3 ELEMENTS (CONTINUED)

- **Pollution Prevention Measures & Controls**
 - Good housekeeping
 - Spill prevention and response
 - Erosion control
 - Structural control maintenance
 - Best Management Practices
 - Employee training and education (conducted a minimum of once per year)
 - Periodic inspections (once per quarter unless otherwise specified in Section V of the General Permit)
 - Quarterly Visual Monitoring (sample during rain event)
 - Benchmark Monitoring (as required in Section V of the General Permit)



SWP3 ONGOING REQUIREMENTS

- Recordkeeping
- Inspections & Monitoring
- Employee Training
- Maintenance of Structural Controls
- Annual Comprehensive Site Compliance Evaluation



SITE INSPECTIONS

- Drainage Patterns
- Housekeeping
- Potential Pollutant Sources
- Ditches, Outfalls and Sampling Points



EXIT MEETING

- Discuss deficiencies and/or violations
- Address questions and concerns
- Provide information to help attain compliance



ENFORCEMENT

- Violation Notice is sent to the subject
- Compliance verification is conducted
- Resolution is achieved in most cases
- If resolution is not achieved, the case is submitted to the Harris County Attorney's Office where civil penalties may be assessed.



RESOURCES

- TCEQ Industrial Permitting Program

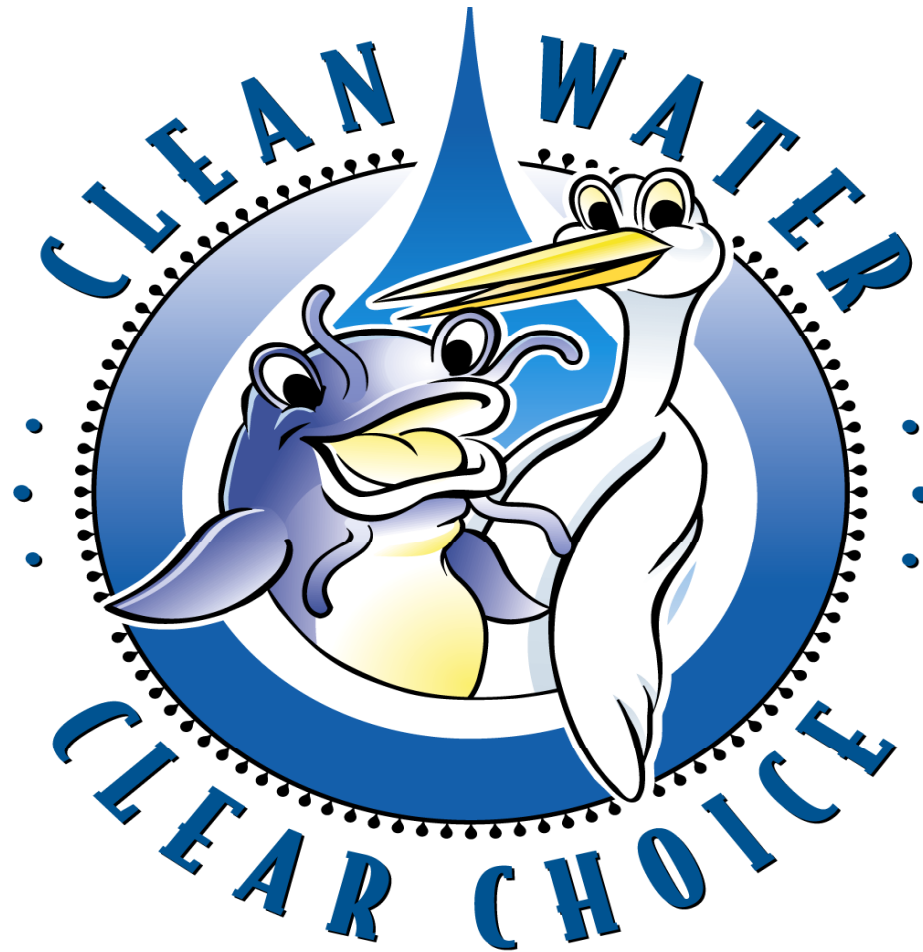
<http://www.tceq.state.tx.us/permitting/waterperm/wwperm/industry.html>

- TCEQ Small Business and Local Government Assistance Division

713-767-3582



www.cleanwaterclearchoice.org



JTF
STORM WATER
MANAGEMENT
JOINT TASK FORCE