

Note: This document is meant for both Print and Digital representation. Links within the document are noted **In Bold, Dark Blue** and can take you up- and down-page to explore further. Links with [Light Blue Underline](#) will open a new page in your web browser with source information.

Model Projects Across the Region

The Houston-Galveston region benefits from a wealth of innovative efforts to enhance our communities' conservation, recreation, and quality of life goals. This selection of model projects provides information on how various successful projects were executed and funded, and/or how they continue to operate.

Enhanced Stormwater or Detention Facilities

[Exploration Green](#)

[Hackberry Gully Regional Detention Park](#)

[Keith-Weiss Park](#)

[Project Brays](#)

[Willow Waterhole Greenway](#)

[Paul Rushing Park](#)

Tidal Flood Mitigation

[Mason Park at Brays Bayou Wetland](#)

[Baytown Nature Center](#)

Wildlife and Habitat Preservation

[Montgomery County Nature Preserve & Trailhead](#)

[Cullinan Park](#)

[Clive Runnells Family Mad Island Marsh Preserve](#)

[Deer Park Prairie](#)

[Kleb Woods Nature Preserve](#)

[Pine Gully Nature Park](#)

[Dr. Ned and Fay Dudley Clear Creek Nature Center](#)

[Armand Bayou Nature Center](#)

[Palacios Prairie Wetlands](#)

[Laffite's Cove Nature Preserve](#)

[Fulbrook on Fulshear Creek](#)

Note: This document is meant for both Print and Digital representation. Links within the document are noted **In Bold, Dark Blue** and can take you up- and down-page to explore further. Links with Light Blue Underline will open a new page in your web browser with source information.

Habitat Restoration

[Half Moon Reef](#)

[Texas City Prairie Preserve](#)

[Seabourne Creek Nature Park](#)

Brownfield Remediation

[Turtle Bayou Nature Preserve](#)

Greenways and Trails

[John Paul Landing Park](#)

[Spring Creek Greenway](#)

[Springwoods Village Nature Park](#)

[Cypress Creek Greenway](#)

[Shadow Creek Ranch Nature Trail & Learning Experience](#)

[Cypress Creek Park at Timber Lane](#)

Education and Activity Centers

[Education Village Floating Wetlands](#)

[Ghirardi WaterSmart Park](#)

[Dickinson Public Library Rain Garden](#)

[Living Shoreline at Trinity Bay Discovery Center](#)

[Sheldon Lake State Park & Environmental Learning Center](#)

[McNair Memorial Park & Pavilion](#)

[Russ Pitman Park](#)

Note: This document is meant for both Print and Digital representation. Links within the document are noted **In Bold, Dark Blue** and can take you up- and down-page to explore further. Links with [Light Blue Underline](#) will open a new page in your web browser with source information.

Turtle Bayou Nature Preserve



Galveston Bay Foundation

Location

30.096082065754523, -95.40097845938946

County

Chambers, Liberty

Description

Turtle Bayou Nature Preserve is a 514-acre tract formerly of the Turtle Bayou Oil Field. It is a notable demonstration of how to convert a former well and contaminated site into a safe and restorative recreational amenity. The Chamber-Liberty Counties Navigation District acquired the property in 2012 and designated it as a conservation easement. The site was rehabilitated using funding from the Texas Railroad Commission Oil & Gas Regulation and Cleanup Fund—which is used specifically to remediate the 10,000+ abandoned wells across Texas—and technical support for cleanup was provided by the Texas Railroad Commission Brownfield Response Program. and a \$500,00 grant from the US Environmental Protection Agency. In 2016 it was opened to the public recreational site managed by the Galveston Bay Foundation. Today the site is popular for birding from multiple viewing towers and walking trails.

Lead Public Entities

[Galveston Bay Foundation](#)

[Chambers-Liberty Counties Navigation District](#)

Helpful Links

[RRC Remediation Announcement](#)

[Turtle Bayou a small success in otherwise growing problem](#)

Funding Sources & Resources

[GBF Turtle Bayou Preservation Plan](#)

[Texas Railroad Commission Brownfield Response Program](#)

[Back to Table of Contents](#)

Note: This document is meant for both Print and Digital representation. Links within the document are noted **In Bold, Dark Blue** and can take you up- and down-page to explore further. Links with [Light Blue Underline](#) will open a new page in your web browser with source information.

Spring Creek Greenway



Harris County Precinct 4

Location

30.096082065754523, -95.40097845938946

County

Harris, Montgomery

Description

The Spring Creek Greenway is a successful example of a large, and still expanding, project done through a broad public-private coalition. The acquisition of land began in 1979 and continued land acquisition will soon connect the greenway system from State Highway 249 all the way to Highway 59. Today, the project stretches nearly 20 miles of trails, connects small area preserves and offers a diverse array of experiences and activities for all ages and levels of ability—from walking and biking along paved trails to kayaking and canoeing along the stretches of Spring Creek. There is also now a central hub of activity and educational programming at the Spring Creek Greenway Nature Center. According to Bayou Land Conservancy, Spring Creek is the only undeveloped creek in Harris County other than Clear Creek. All other creeks and bayous (such as Greens, White Oak, Buffalo, etc.) have either been channelized or concreted.

Lead Public Entities

[Spring Creek Greenway Nature Center](#)
[Bayou Land Conservancy](#)

Helpful Links

[Counties, non-profit piece together Spring Creek Greenway](#)

Funding Sources & Resources

N/A

[Back to Table of Contents](#)

Note: This document is meant for both Print and Digital representation. Links within the document are noted **In Bold, Dark Blue** and can take you up- and down-page to explore further. Links with [Light Blue Underline](#) will open a new page in your web browser with source information.

Mason Park at Brays Bayou Wetlands



CONSOR Engineers

Location

29.725622326693955, -95.2940837188442

County

Harris

Description

Mason Park is a small piece of the larger Brays Bayou wetlands. It consists of 3.5-acres of tidal freshwater wetlands project that will support flood reduction efforts for homes and businesses impacted by 100-year flood events, according to plans laid out in the Harris County Flood Control District Brays Bayou Flood Damage Reduction Project. Since its completion in 2006, the community and project partners continue to plant new vegetation as an ongoing effort to preserve the habitat.

Lead Public Entities

[Texas Cooperative Extension/Texas Sea Grant](#)
[Harris County Flood Control District](#)
[Project Brays](#)

Helpful Links

[Mason Park Wetland announcement](#)

Funding Sources & Resources

N/A

[Back to Table of Contents](#)

Note: This document is meant for both Print and Digital representation. Links within the document are noted **In Bold, Dark Blue** and links outside the document are in Light Blue Underline

Education Village Floating Wetlands



University of Houston, Clear Lake

Location

541 S. 75th Street, Houston, TX 77023

County

Galveston

Description

The Education Village Floating Wetlands project used a 6-acre detention pond to cultivate an 80 square foot floating wetland. Although the project has suffered some challenges in execution, it demonstrates a successful tie-in to the independent school district can be a catalytic opportunity.

Lead Public Entities

[Clear Creek Independent School District](#)
[Environmental Institute of Houston \(at UHCL\)](#)
[Texas Coastal Watershed Program](#)

Helpful Links

N/A

Funding Sources & Resources

[Texas Center for Environmental Quality Grants](#)

[Back to Table of Contents](#)

Note: This document is meant for both Print and Digital representation. Links within the document are noted **In Bold, Dark Blue** and links outside the document are in Light Blue Underline

Russ Pitman Park



Nature Discovery Center

Location

7112 Newcastle St, Bellaire, TX 77401

County

Harris

Description

Russ Pitman Park is a 4-acre park in Bellaire is a great example of a public private partnership in a small-lot urban context. The park is heavily wooded and includes picnics shelters, improved surface trails, natural surface trails, a playground area, and a Nature Discovery Center. Russ Pitman park integrates into and maintains the historic character of the area, and models wild areas in the city, as opposed to manicured parks.

Lead Public Entities

[City of Bellaire](#)

Helpful Links

[Nature Discovery Center](#)

Funding Sources & Resources

N/A

[Back to Table of Contents](#)

Note: This document is meant for both Print and Digital representation. Links within the document are noted **In Bold, Dark Blue** and links outside the document are in Light Blue Underline

Exploration Green



Exploration Green Conservancy

Location

16306 Diana Ln, Houston, TX 77062

County

Harris

Description

In 2011, the Clear Lake City Water Authority (CLCWA) purchased the old Clear Lake Golf Course using Harris County bond funds and hosted a series of town halls to collect community members' input on a multi-use stormwater detention project. When fully built, Exploration Green's detention ponds will hold a combined 500 million gallons of stormwater, protecting an estimated 2,000 to 3,000 homes from flooding in 12 to 15 inches of rain. Exploration Green also serves as a nature preserve, with 6 miles of walking and biking trails, athletic fields available for local sports teams, and dedicated wetlands and native grassland areas. The Exploration Green Conservancy—a non-profit organization formed by dedicated community members—coordinates volunteers and raises funds for all non-stormwater detention elements of the project.

Lead Public Entities

[Clear Lake City Water Authority](#)
[Exploration Green Conservancy](#)

Helpful Links

[Exploration Green groundbreaking](#)

Funding Sources & Resources

[Texas Parks and Wildlife](#)
[Texas Coastal Management Program](#)
[Trees for Houston](#)

[Back to Table of Contents](#)

Note: This document is meant for both Print and Digital representation. Links within the document are noted **In Bold, Dark Blue** and links outside the document are in Light Blue Underline

John Paul Landing Park



Jerry Baker / The Houston Chronicle

Location

29.906395383711114, -95.79396302399071

County

Harris

Description

The John Paul Landing Park consists of 865-acres in Harris County Precinct 3. A planned 450-acre lake will provide a place to fish and serves as a major flood detention facility for the area. When complete it will hold 2,200 acre-feet of water and will accommodate wildlife, both terrestrial and aquatic. Additionally, the park is home to the John Paul Landing Environmental Education Center, trails, boardwalks, and a pedestrian bridge.

When excavating the lake, Harris County Precinct 3 was able to leverage the fill-dirt needs of TxDOT. TxDOT needed dirt to build the berm environments for Highway 99 just to the east of the park, so they dug the first section of the lake at their expense and both projects got done for the price of one. This strategy allowed the majority of lake excavation to be completed by contractors in need of fill dirt for local projects and at no cost to Harris County.

Lead Public Entities

[Harris County Precinct 3](#)
[Harris County Flood Control District](#)

Helpful Links

[John Paul Landing Park to expand](#)

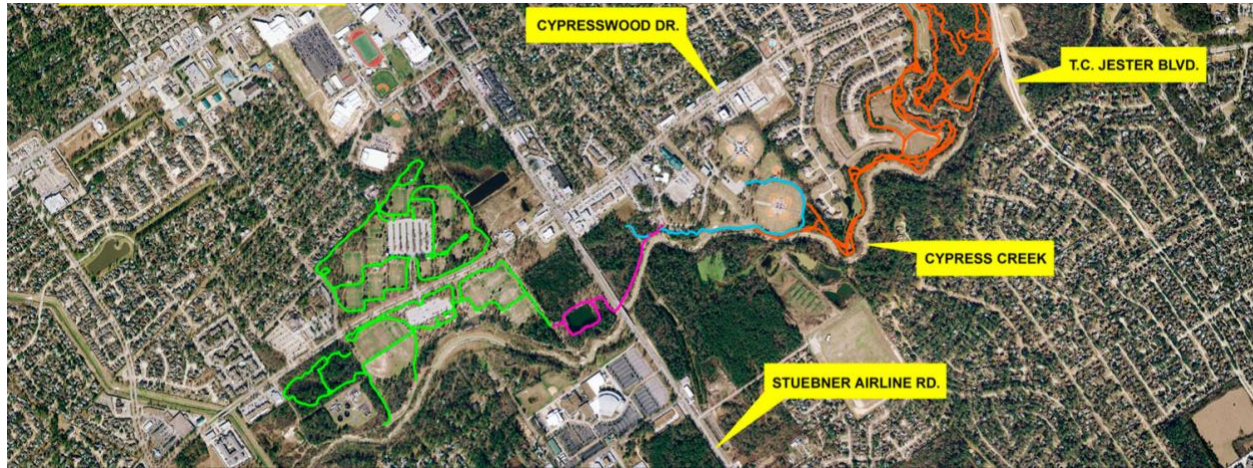
Funding Sources & Resources

N/A

[Back to Table of Contents](#)

Note: This document is meant for both Print and Digital representation. Links within the document are noted **In Bold, Dark Blue** and links outside the document are in Light Blue Underline

Cypress Creek Greenway



Harris County Precinct 4

Location

30.009315631159783, -95.50205836784339

County

Harris

Description

Like Spring Creek, the Cypress Creek Greenway is a multi-jurisdictional and public private partnership initiative to create connected parks and trails across a region. The Cypress Creek Greenway will eventually connect a series of parks stretching from west of Highway 290 eastward to the Spring Creek Greenway near Highway 59. The greenway will create natural floodplain buffer zones, contiguous trail connectivity, and linear wildlife habitat.

Project funding for the Cypress Creek Greenway comes from partnerships with Harris County Flood Control District (HCFCD), Bayou Land Conservancy Cypress Creek Flood Control Coalition (CCFCC), Harris County Precinct 3, Harris County Precinct 4, Texas Parks & Wildlife Department, municipal utility districts (MUDs), and other foundations.

For example, Timber Lane Utility District, which mostly lies within Spring Independent School District, has developed and maintains and five parks along Cypress Creek: Timber Lane, Sandpiper, Liberty, Cypress Creek and Herman Little parks.

Lead Public Entities

[Harris County Pct 4](#)

[Harris County Pct 3](#)

Helpful Links

[Completed Trails Map](#)

[Cypress Creek Flood Control Coalition](#)

Funding Sources & Resources

[Harris County Flood Control District](#)

[Bayou Land Conservancy](#)

[Texas Parks & Wildlife Department](#)

[Timber Lane Utility District](#)

[Back to Table of Contents](#)

Note: This document is meant for both Print and Digital representation. Links within the document are noted **In Bold, Dark Blue** and links outside the document are in Light Blue Underline

Montgomery County Preserve & Trailhead



AllTrails.com

Location

30.1120458767654, -95.45143657931244

County

Harris, Montgomery

Description

The Montgomery County Nature Preserve lies at the confluence of Spring Creek and Panther Creek. It is a 71-acre site with approximately 14 miles of natural trails for birdwatching and hiking. It is frequented by local Master Naturalists and Butterfly enthusiasts and is open to the public daily at no charge. There is no direct access to waterways.

The Bayou Land Conservancy holds a conservation easement on the property, which permanently protects the land from development.

Lead Public Entities

[Bayou Land Conservancy](#)
[Montgomery County](#)

Helpful Links

[Facts Sheet](#)

Funding Sources & Resources

[Bayou Land Conservancy](#)

[Back to Table of Contents](#)

Note: This document is meant for both Print and Digital representation. Links within the document are noted **In Bold, Dark Blue** and links outside the document are in Light Blue Underline

Hackberry Gully Regional Detention Park



City of Mont Belvieu

Location

29.801390265619297, -94.83337463658604

County

Chambers

Description

The Hackberry Gully Regional Detention Park project encompasses approximately 200 square miles. It was envisioned by the City of Mont Belvieu to create a city-wide and regional amenity that meets stormwater detention needs. The detention capacity provided will meet immediate construction demands as well as future stormwater detention needs within the watershed.

Lead Public Entities

[City of Mont Belvieu Parks Planning & Development](#)

Helpful Links

[Hackberry Gully Regional Park Master Plan](#)

Funding Sources & Resources

N/A

[Back to Table of Contents](#)

Note: This document is meant for both Print and Digital representation. Links within the document are noted **In Bold, Dark Blue** and links outside the document are in Light Blue Underline

Cullinan Park



City of Sugarland

Location

29.635138805787292, -95.6606254611041

County

Fort Bend

Description

Cullinan Park is a 754-acre nature park with 2.9-mile loop trail. It was designated in 1987 by the Houston Parks Board but has experienced revival and reinvestment in recent years with the addition of more parcels, new raised trails, and observation decks. The original owner of the property, Alexander Hodge, was a member of Stephen F. Austin's Old Three Hundred, and descendants raised cattle, sugar and other crops on the land for the next 150 years.

The City of Sugar Land annexed Cullinan Park in January 2016 under an interlocal agreement with the City of Houston and a memorandum of understanding with the Cullinan Park Conservancy. The City of Sugar Land is responsible for park security, maintenance, operations and management of design and construction projects while the Conservancy is responsible for fundraising for capital improvements to the park.

Lead Public Entities

[City of Sugar Land](#)

Helpful Links

[Cullinan Park Conservancy](#)

Funding Sources & Resources

[The George Foundation](#)

[Thomas Wortham Foundation](#)

[Brown Foundation](#)

[Back to Table of Contents](#)

Note: This document is meant for both Print and Digital representation. Links within the document are noted **In Bold, Dark Blue** and links outside the document are in Light Blue Underline

Clive Runnells Family Mad Island Marsh Preserve



The Nature Conservancy

Location

28.677586036906234, -96.03632701746648

County

Matagorda

Description

The Clive Runnells Family Mad Island Marsh Preserve consists of an extensive network of marsh and wetland habitats along with upland prairies maintained to protect a critical ecosystem threatened by development and overuse. The continuum of habitats helps reduce erosion and contributes to health of Matagorda Bay. The preserve also provides nesting, feeding, resting and roosting habitat for over 250 species of birds. Visitation is limited, but the Nature Conservancy offers monthly birding tours.

The land is directly adjacent to the Texas Parks and Wildlife Department's Mad Island Wildlife Management Area, which the Nature Conservancy helped establish with a 5,700-acre donation to the Texas Parks and Wildlife Department.

Lead Public Entities

[Texas Parks & Wildlife](#)

[The Nature Conservancy](#)

Helpful Links

[Marsh Preserve is part of an expansive coastal wetland system](#)

Funding Sources & Resources

[Duck Stamp Funds, US Fish & Wildlife](#)

[The Trull Foundation](#)

[Dow Chemical](#)

[Back to Table of Contents](#)

Note: This document is meant for both Print and Digital representation. Links within the document are noted **In Bold, Dark Blue** and links outside the document are in Light Blue Underline

Ghirardi WaterSmart Park



Texas A&M Agrilife Extension

Location

29.52020253910558, -95.06412446184558

County

Galveston

Description

Located on the east side of League City, the Ghirardi WaterSmart nature park features a small pavilion, water cisterns, picnic areas, outdoor classroom, a rain garden, playground, walking trails, and a bathroom. Play spaces at the park double as a teaching display for water conservation—the park shows how conservation need not be expensive or complicated. The pavilion space is available for rent for both League City residents and visitors.

Lead Public Entities

[City of League City](#)

[Texas A&M Agrilife Extension](#)

Helpful Links

[A League City Gem](#)

[Houston Area Park Waters Itself, Cleans Storm](#)

[Drain](#)

[What is a WaterSmart Park?](#)

Funding Sources & Resources

[Texas Sea Grant](#)

[Back to Table of Contents](#)

Note: This document is meant for both Print and Digital representation. Links within the document are noted **In Bold, Dark Blue** and links outside the document are in Light Blue Underline

Dickinson Public Library Rain Garden



Galveston County Daily News

Location

4411 TX-3, Dickinson, TX 77539

County

Galveston

Description

The Dickinson Public Library leveraged a minor landscaping need as an opportunity to educate and model environmental stewardship to citizens. The 1000-square-foot rain garden demonstrates the use of native species, low-impact development practices, and other design considerations for improving water quality through biofiltration of storm water.

Lead Public Entities

[Dickinson Bayou Watershed Partnership](#)
[Dickinson Public Library](#)

Helpful Links

[What is a Rain Garden?](#)

Funding Sources & Resources

[Keep Dickinson Beautiful](#)
[The Ground Up](#)
[Galveston Bay Estuary Program](#)
[Texas Center for Environmental Quality Nonpoint Source Grants](#)

[Back to Table of Contents](#)

Note: This document is meant for both Print and Digital representation. Links within the document are noted **In Bold, Dark Blue** and links outside the document are in Light Blue Underline

Half Moon Reef



The Nature Conservancy

Location

Matagorda Bay

County

Matagorda

Description

Half Moon Reef is a 54-acre restored oyster habitat in Texas' Matagorda Bay and the cornerstone of The Nature Conservancy's restoration efforts along the Gulf of Mexico. Half Moon Reef was once one of the largest and most productive reefs in all of Texas, but by the late 20th century it had lay barren for decades. In 2014, The Nature Conservancy and partners collaborated on a multi-year project to restore the reef and bring this Texas resource back to life.

Today the reef is teeming with marine wildlife. Oysters can now be found on 70 percent of the reef's surface, which improves water quality, bolsters sea grass growth and promotes biodiversity. Half Moon Reef is a popular spot for anglers, who refer to the reef as an area "that holds the fish," and has helped to generate an additional \$1.27 million in annual economic activity for the state of Texas through tourism, fishing guide excursions, and recreational fishing. The success of Half Moon Reef has created a blueprint for coastal restoration across the region.

Lead Entities

[The Nature Conservancy](#)

Helpful Links

[Half Moon Reef](#)

[The New Halfmoon Reef, Fishgame Magazine](#)

Funding Sources & Resources

[RESTORE Act](#)

[Texas Sea Grant](#)

[Back to Table of Contents](#)

Note: This document is meant for both Print and Digital representation. Links within the document are noted **In Bold, Dark Blue** and links outside the document are in Light Blue Underline

Keith-Weiss Park



East Aldine District

Location

29.88947597122503, -95.354233830283

County

Harris

Description

Keith-Weiss Park provides flood control for the Hall's Bayou watershed, outdoor recreation opportunities, and new pond ecosystems around native landscaping. Three 112-acre detention ponds, linked by riparian corridors, aid in flood control by slowing and storing stormwater. The ponds were designed and landscaped to appear natural. Keith-Weiss Park also offers hiking and biking trails, a boardwalk, tennis and basketball courts, soccer and baseball fields.

Lead Public Entities

[City of Houston](#)

Helpful Links

N/A

Funding Sources & Resources

N/A

[Back to Table of Contents](#)

Note: This document is meant for both Print and Digital representation. Links within the document are noted **In Bold, Dark Blue** and links outside the document are in Light Blue Underline

Project Brays



City of Bellaire

Location

County

Harris

Description

Project Brays consists of more than 75 projects throughout the 31 miles of Brays Bayou. The Harris County Flood Control District, the U.S. Army Corps of Engineers and several local initiatives have come together to work on Project Brays, previously known as the Brays Bayou Federal Flood Damage Reduction Project.

To date, four stormwater detention basins have been built to hold approximately 3.5 billion gallons of stormwater and cover about 900 acres. Approximately 21 miles of the channel has been modified to increase the amount of stormwater the bayou can carry. These projects mitigate flood risks and simultaneously bring much-needed greenspace and recreational amenities to the surrounding communities.

For example, the Arthur Storey Park Stormwater Detention Basin can hold approximately 1.15 billion gallons of stormwater in the event of heavy rainfall. Additionally, the Harris County Flood Control District and Harris County Precinct 3 have turned this 210-acre detention basin into a charming neighborhood park, featuring amenities such as picnic pavilions, gazebos, walking trails, and playgrounds.

Lead Public Entities

[Harris County Flood Control District](#)

Helpful Links

ProjectBrays.org

[USACE Press Release](#)

Funding Sources & Resources

[US Army Corps of Engineers—Galveston District](#)

[Back to Table of Contents](#)

Note: This document is meant for both Print and Digital representation. Links within the document are noted **In Bold, Dark Blue** and links outside the document are in Light Blue Underline

Living Shoreline at Trinity Bay Discovery Center



Galveston Bay Estuary Program

Location

12110 Farm to Market Rd 2354, Baytown, TX 77523

County

Chambers

Description

The Trinity Bay Discovery Center (TBDC) Living Shoreline project aimed to protect the shoreline of the TBDC property from erosion and restore fringing estuarine marsh habitat. Owned by the Galveston Bay Foundation, TBDC is a 17-acre conservation and education property located on the northwest shoreline of Trinity Bay in Chambers County, Texas. Trinity Bay is a high wave energy environment, particularly in the immediate area of the project. The project is located along approximately 880 feet of eroding shoreline. Wind-driven waves have impaired the twenty-year-old bulkhead, installed by previous landowners, resulting in severe shoreline erosion as well as vegetation and soil losses.

Lead Public Entities

[Galveston Bay Estuary Program](#)

Helpful Links

[Partnership will Benefit over \\$3.6 million in Coastal Habitat](#)

Funding Sources & Resources

Coastal Conservation Association of Texas, [Building Conservation](#)

[Trust](#)

[Galveston Bay Foundation](#)

[Houston Wilderness](#)

[US Fish & Wildlife Service – Coastal Program](#)

[Back to Table of Contents](#)

Note: This document is meant for both Print and Digital representation. Links within the document are noted **In Bold, Dark Blue** and links outside the document are in Light Blue Underline

Sheldon Lake State Park & Environmental Learning Center



Texas Parks and Wildlife

Location

29.857461, -95.160029

County

Harris

Description

Sheldon Lake State Park & Environmental Learning Center is a 2,800-acre outdoor education and recreation facility located in northeast Harris County. The park is split into two units: Sheldon Lake and the State Park. The reservoir levees encompass 1,200 acres, of which 800 are permanently inundated and 400 are marsh and swampland.

Activities at the State Park and Environmental Learning Center include group programming, birding, wildlife/nature study, hiking, and fishing for children. The park (open daily) includes a 0.5-mile self-guided nature trail that passes 28 naturalized ponds that contain alligators and other wildlife. Free catch-and-release family fishing is permitted in the two fishing ponds. Alternative energy technologies and green building techniques (photovoltaic, solar hot water, wind turbine and ground coupled-geothermal) are demonstrated at the Pond Center. A wildscape demonstration garden shows techniques for using native plants to attract birds, butterflies and other wildlife to your backyard.

Lead Public Entities

[Texas Parks & Wildlife](#)

Helpful Links

N/A

Funding Sources & Resources

Texas State Soil & Water Conservation Board – [Nonpoint Source](#)

[Grant Program](#)

[Texas Master Naturalist Program](#)

[Back to Table of Contents](#)

Note: This document is meant for both Print and Digital representation. Links within the document are noted **In Bold, Dark Blue** and links outside the document are in Light Blue Underline

Shadow Creek Ranch Nature Trail



City of Pearland

Location

1801 Kingsley Dr
Pearland, TX 77584

County

Brazoria

Description

The Shadow Creek Ranch Nature Trail project was part of the Parks & Recreation Master Plan, adopted by Pearland City Council in 2005, and again in 2015, that listed hike and bike trails as the number one priority for acquisition and development. The Shadow Creek Trail itself is a 10-foot concrete trail between the existing Nature Trail near the Sports Complex at Shadow Creek Ranch and the east side of Kirby Drive.

The project received federal funding from Transportation Enhancement (TE) funds and Federal Surface Transportation Program, Metropolitan Mobility Off-System (STP-MM) funds. The project also qualified for Tax Increment Reinvestment Zone (TIRZ) reimbursement which effectively allowed the trail to be completed at virtually no direct cost to the city.

Lead Public Entities

[City of Pearland Parks](#)

Helpful Links

[Shadow Creek Ranch](#)
[Pearland Trails & Sidewalks Projects](#)

Funding Sources & Resources

N/A

[Back to Table of Contents](#)

Note: This document is meant for both Print and Digital representation. Links within the document are noted **In Bold, Dark Blue** and links outside the document are in Light Blue Underline

Armand Bayou Nature Center



Armand Bayou Nature Center

Location

29.591060857683576, -95.07639093583833

County

Harris

Description

The 2,500-acre Armand Bayou Nature Center in Pasadena includes three distinctive native ecosystems- bayou, prairie and a woodland forest. The site is almost entirely passively programmed, offering bird watching expeditions, nature walks and paddling trips as its primary attractions. The Armond Bayou Nature Center was founded in 1974, and is stewarded by a non-profit organization.

Lead Public Entities

[Armand Bayou Nature Center](#)

Helpful Links

[ABNA Volunteers](#)

[Armand Bayou Paddling Trail](#)

Funding Sources & Resources

N/A

[Back to Table of Contents](#)

Note: This document is meant for both Print and Digital representation. Links within the document are noted **In Bold, Dark Blue** and links outside the document are in Light Blue Underline

Paul Rushing Park



Harris County Precinct 3

Location

9114 Katy Hockley Rd, Katy, TX 77493

County

Harris

Description

Paul Rushing Park is located on 232 acres in the Katy Prairie. The primary role Paul Rushing Park serves is stormwater detention; however, the interconnected lakes system, Chain-of-Lakes, is a wildlife habitat centerpiece. Covering more than 100 acres with lakes of varying sizes and depths, the area offers suitable habitats for a range of native and seasonal birds. There are 2.3 miles of trails, including a boardwalk and six bird observation blinds.

Lead Public Entities

[Harris County Precinct 3](#)

Helpful Links

[Park Map & Layout](#)

Funding Sources & Resources

N/A

[Back to Table of Contents](#)

Note: This document is meant for both Print and Digital representation. Links within the document are noted **In Bold, Dark Blue** and links outside the document are in Light Blue Underline

Texas City Prairie Preserve



The Nature Conservancy

Location

702 Highway 146 North, Texas City, TX 77590

County

Galveston

Description

In 1995, The Nature Conservancy established the 2,303-acre Texas City Prairie Preserve in order to restore and revitalize the coastal habitat and protect the species that depend on it for survival. Their efforts engaged stakeholders, like U.S. Fish and Wildlife Service, Texas General Land Office and the Galveston Bay Estuaries Program, to develop living shoreline projects, and manage land through cattle grazing and prescribed fire.

Lead Public Entities

[The Nature Conservancy](#)

Helpful Links

[Protecting a prairie – Easy Living, Gulf Coast Style](#)

Funding Sources & Resources

[Texas A&M-Kingsville Kleberg Wildlife Research Institute](#)

[Back to Table of Contents](#)

Note: This document is meant for both Print and Digital representation. Links within the document are noted **In Bold, Dark Blue** and links outside the document are in Light Blue Underline

Cypress Creek Park at Timber Lane



Timber Lane Utility District

Location

30.044595974900837, -95.40357946293089

County

Harris

Description

This 2.5-mile trail featuring a bridge spanning Cypress Creek extends from Harris County Precinct 4's Mercer Botanic Gardens to Timber Lane Park. It is a popular place for walking, hiking and fishing. Cypress Creek Park at Timber Lane was financed with 2 grants from Texas Parks and Wildlife Department: an Outdoor Recreation Grant with 50% match from bond funds and a Trails Grant with 20% match from Timber Lane Utility District funds. This project completed in 2013.

Lead Public Entities

[Harris County Precinct 4](#)

Helpful Links

N/A

Funding Sources & Resources

[Texas Parks & Wildlife Outdoor Recreation Grant](#)

[Timber Lane Utility District](#)

[Back to Table of Contents](#)

Note: This document is meant for both Print and Digital representation. Links within the document are noted **In Bold, Dark Blue** and links outside the document are in Light Blue Underline

Seabourne Creek Nature Park



John Chitty / Texas Master Naturalists

Location

29.524786302574324, -95.8071573483324

County

Fort Bend

Description

The Seabourne Creek Nature Park a 164-acre area with walking, jogging, and biking trails, wetlands, a prairie restoration area, butterfly garden, restrooms, and a four-acre lake stocked with bass, perch and catfish. The R.W. Lindsey Gazebo is 1,025 square feet, equipped with electricity, and available for rentals. While much of the park programming focuses on prairie and wetland restoration areas, plans for the future involve adding baseball and soccer fields, picnic areas, amphitheaters.

Lead Public Entities

[City of Rosenberg](#)

Helpful Links

[Seabourne Creek Park Master Plan](#)

[Seabourne Nature Fest](#)

[Restoration work Brochure](#)

Funding Sources & Resources

[Texas Master Naturalists](#)

[Back to Table of Contents](#)

Note: This document is meant for both Print and Digital representation. Links within the document are noted **In Bold, Dark Blue** and links outside the document are in Light Blue Underline

Deer Park Prairie



Thomas B. Shea / The Houston Chronicle

Location

29.669407556464613, -95.10861146616814

County

Harris

Description

The Deer Park Prairie Preserve is 51-acres of untouched coastal prairie, essentially the same today as it was thousands of years ago. The area is home to more than 300 species of native plants and provides habitat for many animal species. Located in the heart of the Houston metroplex and within the city of Deer Park, a fundraising effort led by the Bayou Land Conservancy in 2013 saved the area from development. After purchasing the property, the Bayou Land Conservancy donated it to the Native Prairies Association of Texas. NPAT and their Houston chapter are now stewards the prairie. Bayou Land Conservancy holds a conservation easement on the property to protect it from development in perpetuity.

Lead Public Entities

[Bayou Land Conservancy](#)

Helpful Links

[Native Prairies Association of Texas](#)

Funding Sources & Resources

[2013 Fundraising Campaign](#)

[Back to Table of Contents](#)

Note: This document is meant for both Print and Digital representation. Links within the document are noted **In Bold, Dark Blue** and links outside the document are in Light Blue Underline

McNair Memorial Park & Pavilion



City of El Lago

Location

418 Lakeshore Dr, El Lago, TX 77586

County

Harris

Description

The McNair Memorial Park & Pavilion in El Lago has playground equipment, covered picnicking areas, baseball fields, a newly constructed all-purpose pavilion, and restroom facilities. The park is in memoriam Ronald McNair, an astronaut for NASA who died during the launch of the Space Shuttle Challenger.

Lead Public Entities

[City of El Lago](#)

Helpful Links

N/A

Funding Sources & Resources

N/A

[Back to Table of Contents](#)

Note: This document is meant for both Print and Digital representation. Links within the document are noted **In Bold, Dark Blue** and links outside the document are in Light Blue Underline

Fulbrook on Fulshear Creek



Drees Homes

Location

5005 Lodge Lake Dr, Fulshear, TX 77441

County

Fort Bend

Description

Fulbrook on Fulshear Creek is a master-planned community with large preserved open spaces and extensive trails and passive recreation sites. Developers aim to offer a neighborhood built cohesively with the area's natural resources.

Lead Public Entities

N/A

Helpful Links

[Full Site Map](#)

[Fulbrook Community website](#)

Funding Sources & Resources

N/A

[Back to Table of Contents](#)

Note: This document is meant for both Print and Digital representation. Links within the document are noted **In Bold, Dark Blue** and links outside the document are in Light Blue Underline

Kleb Woods Nature Preserve



Places to Visit in Tomball, Houston Prime Realty

Location

30.06954815899563, -95.73872394670487

County

Harris

Description

The Kleb Woods Nature Preserve in Tomball was created by the descendants of German immigrants who established themselves in the area in the mid 19th century. Elmer Kleb lived on the 132-acre farm his entire life, and a small portion of the property was opened to the public after he passed away. The park has several miles of natural walking trails, picnic tables, campsites, restrooms, and paved parking.

Lead Public Entities

[Harris County Precinct 3](#)

Helpful Links

[Take A Hike Into Kleb Woods Nature Preserve, A Fairytale Forest In Texas](#)

Funding Sources & Resources

N/A

[Back to Table of Contents](#)

Note: This document is meant for both Print and Digital representation. Links within the document are noted **In Bold, Dark Blue** and links outside the document are in Light Blue Underline

Springwoods Village Nature Park



Springwoods Village

Location

30.106505779358468, -95.45087486808616

County

Montgomery

Description

Developers of the master-planned Springwoods Village community incorporated a number of nature preserves as community green spaces throughout the mixed-use development. Over 290 acres within the Springwoods Village community are dedicated to a system of parks and natural corridors. Through partnership with Montgomery County Precinct 3, they have been able to connect these assets to the nearby Montgomery County Nature Preserve and Spring Creek Greenway. The master-planned community also incorporated sustainable, native landscaping techniques.

Lead Public Entities

N/A

Helpful Links

[Community Map](#)

[Springwoods Village](#)

Funding Sources & Resources

N/A

[Back to Table of Contents](#)

Note: This document is meant for both Print and Digital representation. Links within the document are noted **In Bold, Dark Blue** and links outside the document are in Light Blue Underline

Laffite's Cove Nature Preserve



Galveston.com

Location

29.217463060747587, -94.9344222449381

County

Galveston

Description

Laffite's Cove Nature Preserve sits in residential community, behind a cluster of beachside homes which offers some protection from the windy shoreline. The nature preserve is dedicated to its famous one-time owner, Jean Laffite. The cove is a popular birding site and a small wood-planked boardwalk allows birders to view small lake within the Preserve. The preserve is now part of the Texas Coastal Birding Trail.

Lead Public Entities

[City of Galveston](#)

Helpful Links

[A local birder's perspective](#)

Funding Sources & Resources

[Laffite's Cove Nature Society](#)

[Back to Table of Contents](#)

Note: This document is meant for both Print and Digital representation. Links within the document are noted **In Bold, Dark Blue** and links outside the document are in Light Blue Underline

Pine Gully Nature Park



City of Seabrook

Location

29.592016088299374, -94.99347111610255

County

Harris

Description

The Pine Gully Nature Park in Seabrook has trails, open spaces, picnic areas, and gathering spaces for private parties in addition to undeveloped and restored woodlands and salt marshes. The 52-acre park offers sweeping views of Galveston Bay along its 1,000-foot pier. The Pine Gully trail loop is a 6-mile long crushed granite trail, appropriate for walking, running, or biking. Pine Gully is also located along the Great Texas Coastal Birding Trail; restored wetlands attract a variety of waterbirds.

Lead Public Entities

[City of Seabrook, TX](#)

Helpful Links

[Park Rental Rates & Fees](#)

Funding Sources & Resources

N/A

[Back to Table of Contents](#)

Note: This document is meant for both Print and Digital representation. Links within the document are noted **In Bold, Dark Blue** and links outside the document are in Light Blue Underline

Dr. Ned and Fay Dudney Clear Creek Nature Center



Texas Parks and Wildlife

Location

29.529404450771697, -95.08864126028577

County

Galveston

Description

The Dr. Ned and Fay Dudney Nature Center, once known as the Davis tract, is one of the last remaining large undeveloped properties with quality wetlands in Galveston County. The 148-acre park is an excellent habitat for migrant birds, such as Sand hill cranes, great blue herons, ibises, American egrets, great white herons, owls and various songbirds. The site's wetlands serve as a nursery for many species of fish. The wetlands to the east help to provide homes to deer, bobcat, coyote, and raccoons.

The first phase of the park construction included a 1.3 mile concrete, multi-purpose observation trail with bird blinds, restrooms, picnic tables, outdoor grills and a pavilion. Phase 2 will provide a nature educational center, bird rehabilitation center, and more trails. The park provides public education; through interpretive signage, literature, field trips, the park teaches adults and children alike the value of the rich and diverse habitats found in the Texas Coastal zones.

Lead Public Entities

[City of League City](#)

Helpful Links

[Video Tour of Clear Creek Nature Center](#)

Funding Sources & Resources

[Texas Parks & Wildlife](#)

[US Fish & Wildlife Coastal Wetlands Conservation Program](#)

[Galveston Bay Estuary Program](#)

[TCEQ Grant](#)

[Back to Table of Contents](#)

Note: This document is meant for both Print and Digital representation. Links within the document are noted **In Bold, Dark Blue** and links outside the document are in Light Blue Underline

Baytown Nature Center



Baytown Nature Center

Location

29.75490873941169, -95.035799090089

County

Chambers

Description

The Baytown Nature Center is a great place to enjoy outdoor activities, like fishing and crabbing, walking, jogging, nature photography, and picnics. Beginning in the 1960s, hurricanes and tidal flooding caused major subsidence of land, including industrial sites, into the Bay. The City eventually took over the blighted land, cleared debris and converted it into a what is now the Nature Center using a range of sources including French Limited Superfund Site mitigation funds. Over the years the site has expanded to 500+ acres of mixed hardwood forest, wetlands, and high-quality tidal marsh ecosystems. The outer peninsula, surrounded by Burnet, Crystal, and Scott Bays is a programmed park area with a fishing pier, observation platforms, picnic tables and the Children's Nature Discovery Area.

Lead Public Entities

[City of Baytown](#)

Helpful Links

[Friends of Baytown Nature Center](#)

[Educational partnership with GCCISD](#)

[TCEQ NRDA on Use of Tidal Wetland](#)

[Restoration for Superfund Site remediation](#)

Funding Sources & Resources

[Natural Resources Trustee Grant Program](#)

[Back to Table of Contents](#)

Note: This document is meant for both Print and Digital representation. Links within the document are noted **In Bold, Dark Blue** and links outside the document are in Light Blue Underline

Palacios Prairie Wetlands



Cheryl Mergo

Location

-96.2105, -96.2105

County

Matagorda

Description

The Palacios Prairie Wetlands is a 27-acre upland prairie and costal marsh area in the City of Palacios with around 700 feet of trails, a pier with a kayak launch, and a bird watching tower. The Palacios Prairie Wetlands Inc., a 501(c)3 non-profit organization, used Coastal Impact Assistance Program money appropriated to Matagorda County and financial support from the Trull Foundation to build the Palacios Prairie Wetlands. Palacios Prairie Wetlands Inc. owns the property and manages all maintenance.

Lead Public Entities

N/A

Helpful Links

N/A

Funding Sources & Resources

[Coastal Impact Assistance Program](#)

[Back to Table of Contents](#)

Note: This document is meant for both Print and Digital representation. Links within the document are noted **In Bold, Dark Blue** and links outside the document are in Light Blue Underline

Willow Waterhole Greenway



Willow Waterhole Greenspace Conservancy

Location

29.656073378716894, -95.47125829251416

County

Harris

Description

Willow Waterhole Greenway is a 290-acre greenway that offers Houstonians recreational opportunities and flood protection. The overall development plan includes a series of ponds designed to hold storm water that could otherwise flood nearby streets and homes. Expanses of open space around the ponds are designed for wildlife conservation and passive recreation, including walking trails and gazebos. Native plants are being nurtured on the site and additional trees will be planted as ongoing construction projects are finished.

In 1999, the Brays Bayou Association sponsored the formation of a new organization, the Willow Waterhole Greenspace Conservancy. It came together formally as a non-profit organization in 2001 with the intent to aid the Harris County Flood Control District and Houston Parks and Recreation Department in implementing Willow Waterhole Greenway. Grants from the Texas Parks and Wildlife Department have been instrumental in launching this project.

Lead Public Entities

[City of Houston](#)

Helpful Links

[Willow Waterhole Greenspace Conservancy](#)

Funding Sources & Resources

[Harris County Flood Control District](#)

[Texas Parks & Wildlife](#)

[Back to Table of Contents](#)