

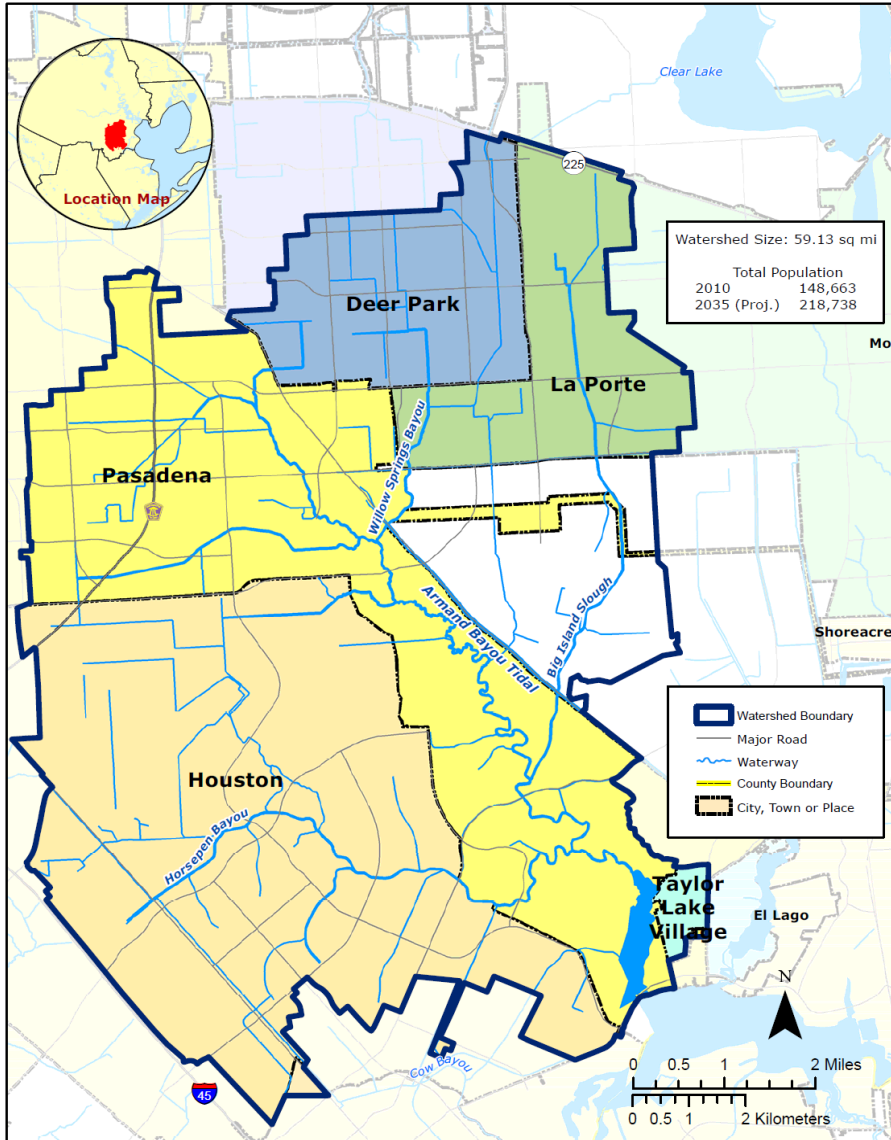
An Overview of Armand Bayou



Todd Running, Houston Galveston Area Council

Jurisdictions Involved

ARMAND BAYOU WATERSHED



Harris County

City of Pasadena

City of La Porte

City of Houston

City of Deer Park

Taylor Lake Village

Ellington Air Field

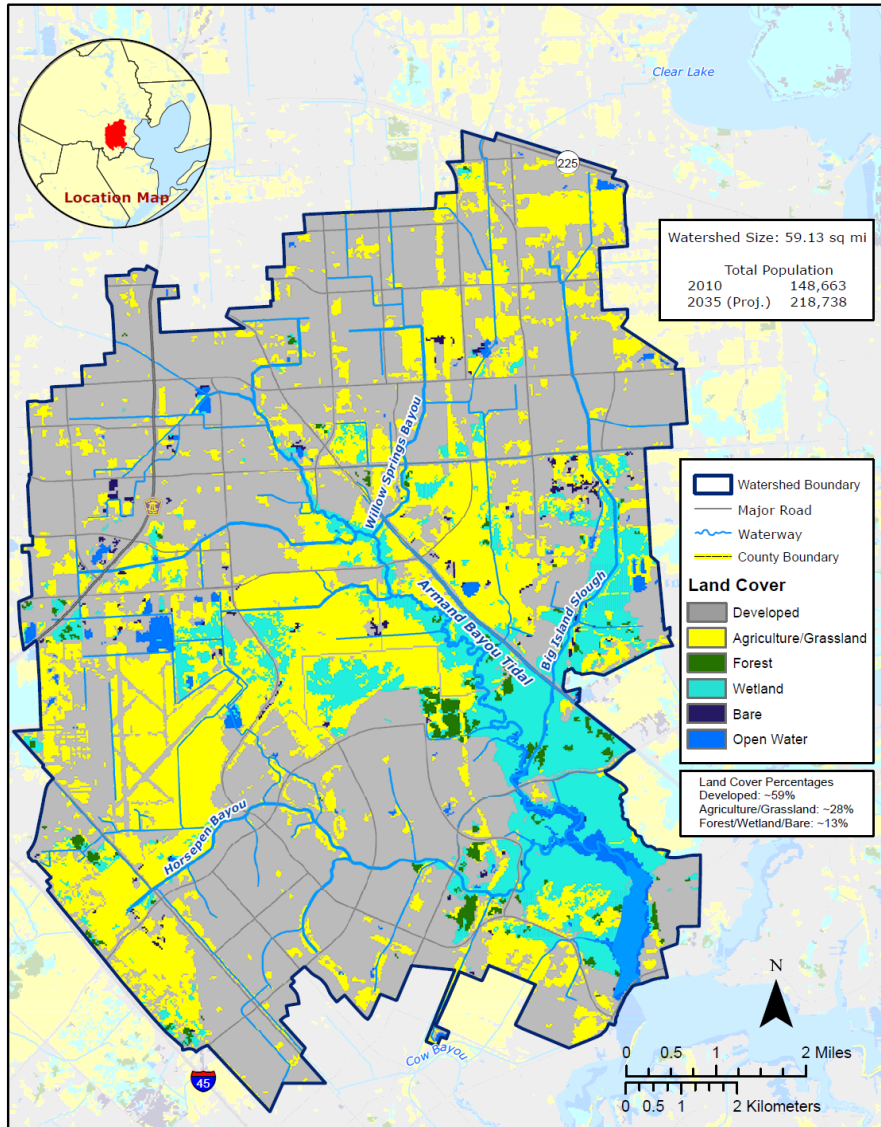
Johnson Space Center

Armand Bayou Nature Center

University of Houston Clear Lake

Land Cover

ARMAND BAYOU WATERSHED - LAND COVER 2010



Armand Bayou Has it All

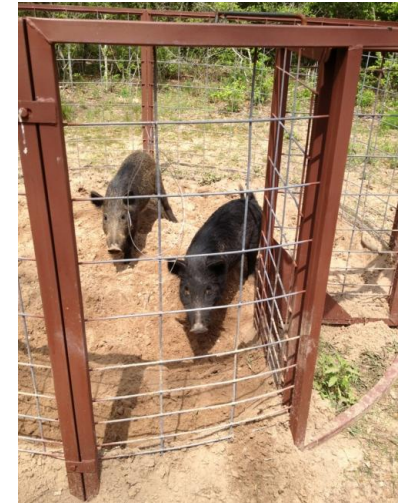
- Developed
 - Residential
 - Commercial
 - Industrial
- Grasslands and Ag
- Forested
- Wetlands
- Open Water



Potential Sources

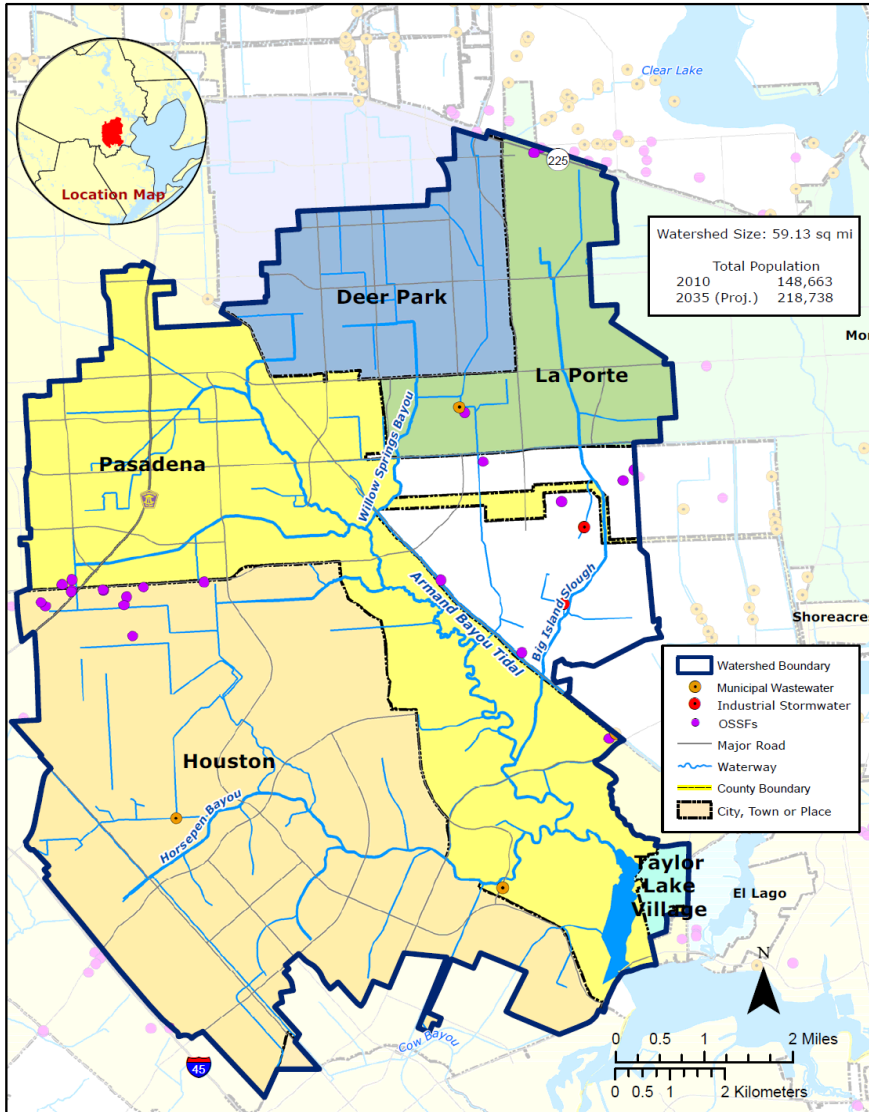


- WWTFs
- OSSFs
- Sanitary Sewer Overflows
- Illicit Connection/Discharges
- Storm Water Runoff
- Pet Waste
- Wildlife



Wastewater Treatment

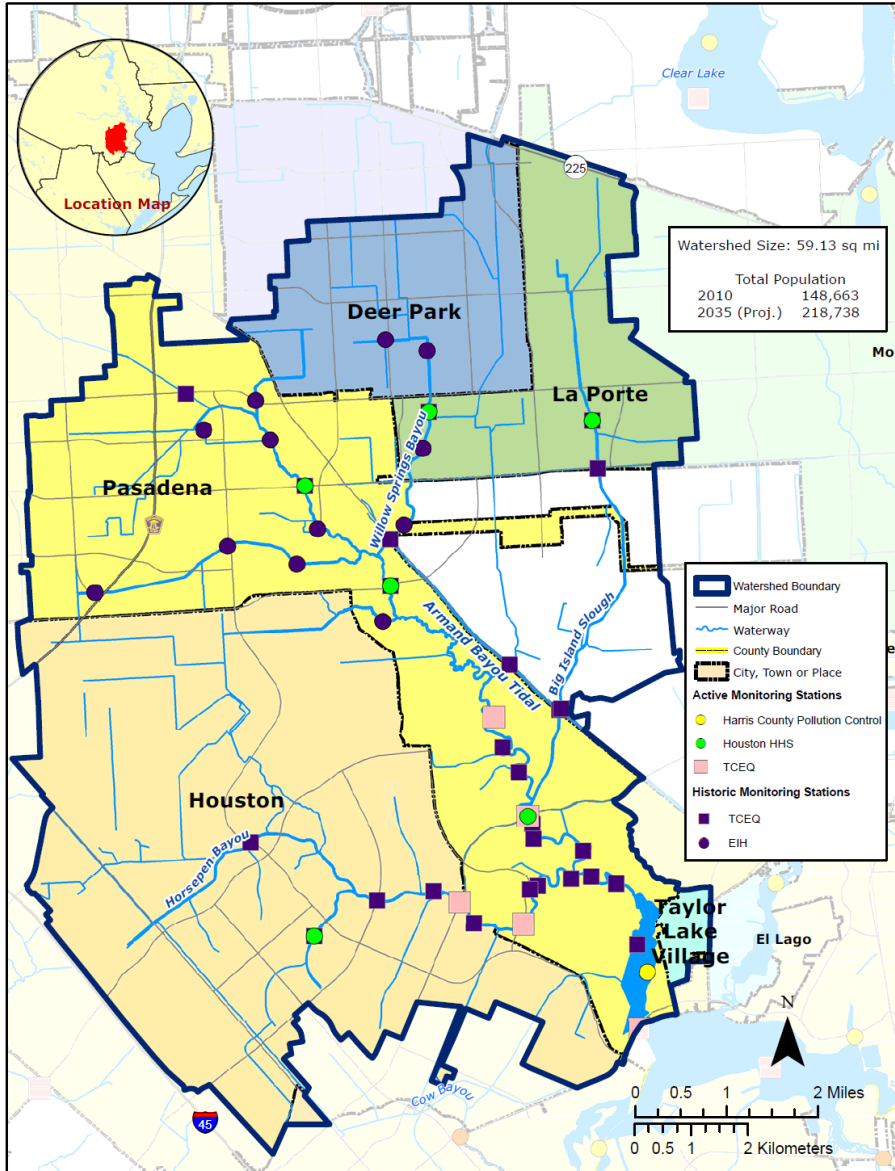
ARMAND BAYOU WATERSHED - WASTEWATER TREATMENT



- Five Permitted Treatment Plants
 - Three municipal
 - Two Industrial Stormwater
- 27 Permitted OSSFs
- 170 Unpermitted OSSFs (estimated)

Water Quality Monitoring

ARMAND BAYOU WATERSHED - MONITORING STATIONS



11 Active Sites

Harris County

City of Houston

TCEQ

Over 30 Historical Sites

TCEQ

EIH



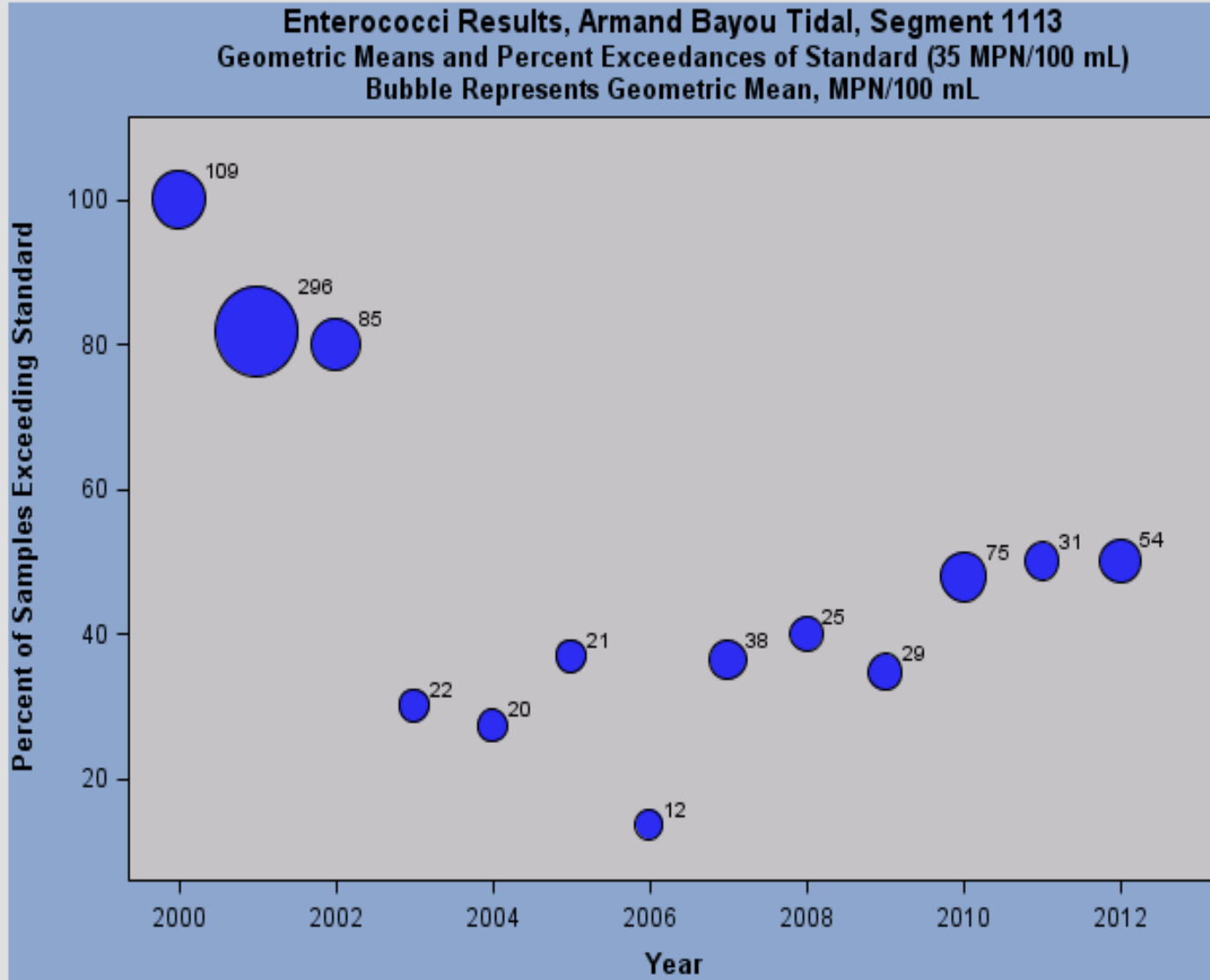
12 Years of Tidal Bacteria Data

Summary Statistics - Enterococci in Armand Bayou Tidal, Segment 1113 Current Water Quality Standard: 35 MPN/100 mL

Year	Number of Samples	Minimum	Maximum	Geometric Mean	Percent of Samples Exceeding Standard
2000	2	109	110	109	100
2001	11	10	13000	296	82
2002	5	20	486	85	80
2003	10	10	169	22	30
2004	11	10	346	20	27
2005	19	10	300	21	37
2006	22	10	500	12	14
2007	22	10	24192	38	36
2008	20	10	330	25	40
2009	26	10	1700	29	35
2010	23	10	24000	75	48
2011	26	10	4100	31	50
2012	4	20	200	54	50



12 Years of Tidal Bacteria Data





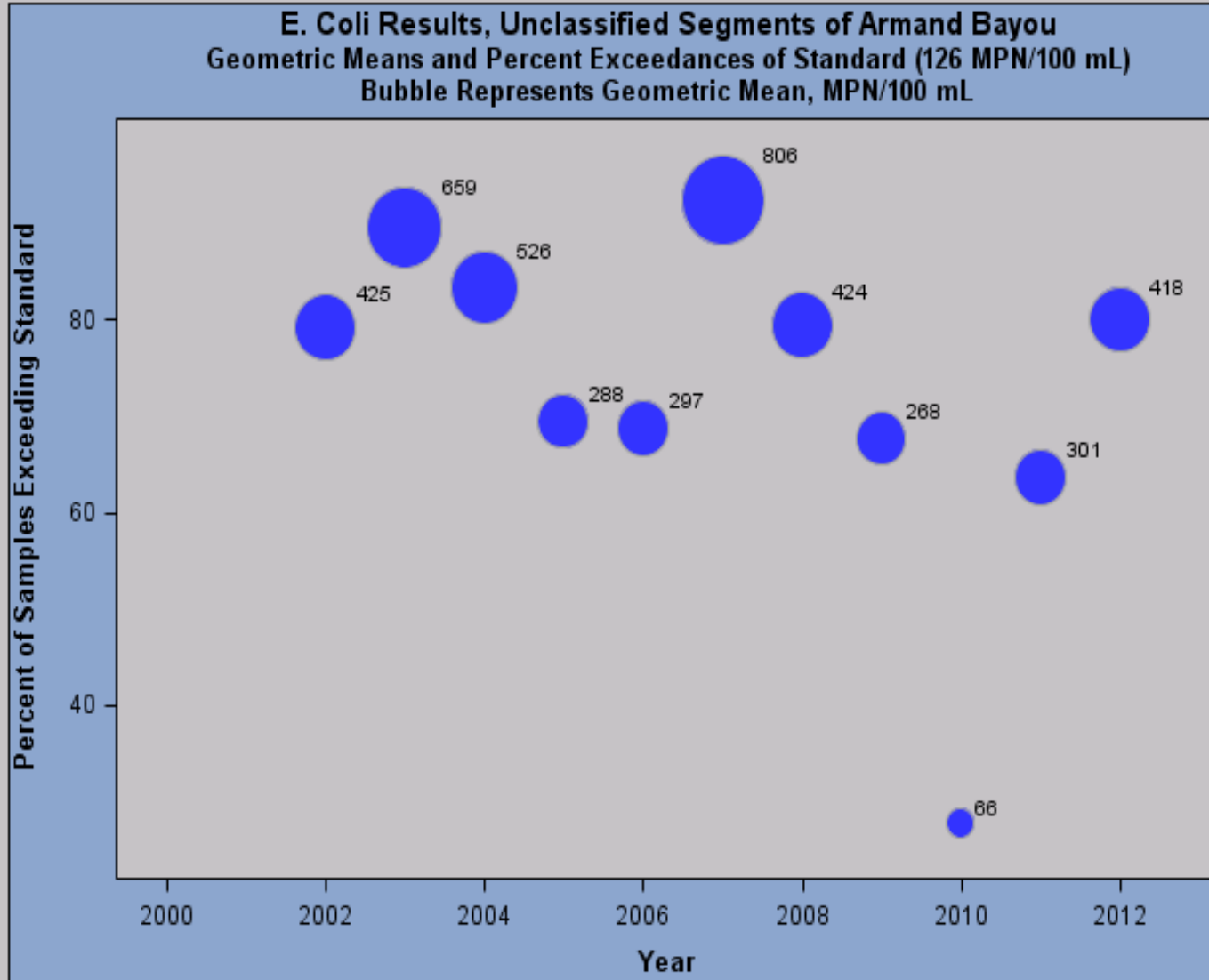
12 Years of Bacteria Data

Summary Statistics - E. Coli in Unclassified Segments of Armand Bayou Current Water Quality Standard: 126 MPN/100 mL

Year	Number of Samples	Minimum	Maximum	Geometric Mean	Percent of Samples Exceeding Standard
2002	48	10	25000	425	79
2003	48	10	24000	659	90
2004	48	10	19000	526	83
2005	36	10	6000	288	69
2006	48	10	20000	297	69
2007	39	84	61000	806	92
2008	34	30	44000	424	79
2009	34	45	77000	268	68
2010	36	2	1200	66	28
2011	44	4	24000	301	64
2012	10	24	24000	418	80

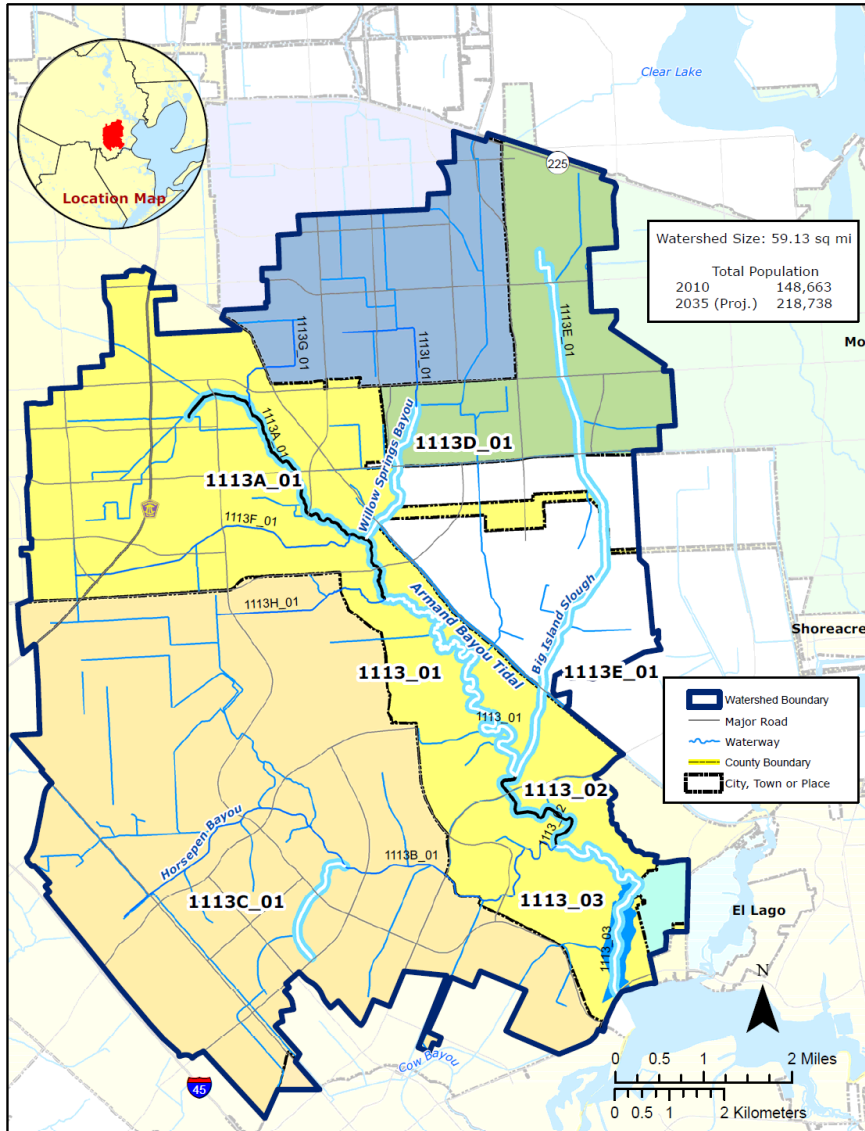


12 Years of Bacteria Data



Assessment Units

ARMAND BAYOU WATERSHED - ASSESSMENT UNITS



Tidal:

- Armand Bayou (1113)
- Horspen Bayou Tidal (1113B)

Fresh:

- Armand Bayou (1113A)
- Unnamed Tributary to Horsepen Bayou (1113C)
- Willow Springs Bayou (1113D)
- Big Island Slough (1113E)



Bacteria Data by Assessment Unit

Geometric Means by Assessment Unit

Assessment Unit	Number of Samples	Seven-Year Geometric Mean	Water Quality Standard
1113_01	42	23	Enterococci (35 MPN/100)
1113_02	72	38	Enterococci (35 MPN/100)
1113_03	19	43	Enterococci (35 MPN/100)
1113D_01	54	633	E. Coli (126 MPN/100 mL)
1113A_01	68	153	E. Coli (126 MPN/100 mL)
1113C_01	53	178	E. Coli (126 MPN/100 mL)
1113E_01	50	402	E. Coli (126 MPN/100 mL)

Data from June 2005 – May 2012



■ ■ ■ **Thank You!**

Todd Running

todd.running@h-gac.com

713-993-4549



Areas Where I-Plans are Completed

