

County	Household Population (Thousands)										
	1980	1990	2000	2010	2015	2020	2025	2030	2035	2040	2045
Brazoria	162	183	231	303	344	386	438	482	517	605	699
Chambers	18	20	26	35	38	44	48	51	52	63	84
Fort Bend	127	221	348	579	714	826	941	1,043	1,133	1,250	1,362
Galveston	193	215	246	287	323	359	384	412	442	473	504
Harris	2,389	2,789	3,358	4,048	4,444	4,810	5,189	5,567	5,959	6,212	6,434
Liberty	47	52	65	70	82	85	91	99	107	133	164
Montgomery	128	181	292	453	522	652	765	887	1,001	1,111	1,220
Waller	17	20	29	40	47	53	57	65	73	99	125
<b>Region</b>	3,082	3,681	4,596	5,814	6,513	7,215	7,913	8,605	9,282	9,946	10,593

County	Household Population Change (Thousands)									
	1980-1990	1990-2000	2000-2010	2010-2015	2015-2025	2025-2035	2035-2045	1980-2015	2015-2045	
Brazoria	21	48	72	41	94	79	182	182	356	
Chambers	2	6	9	3	10	4	32	19	47	
Fort Bend	94	127	231	134	228	191	229	586	648	
Galveston	22	31	41	36	61	58	62	130	181	
Harris	400	569	689	396	745	770	476	2,054	1,991	
Liberty	5	13	5	11	9	16	58	35	83	
Montgomery	53	111	160	70	243	236	219	394	697	
Waller	4	9	10	7	10	16	52	30	78	
<b>Region</b>	599	915	1,219	698	1,400	1,369	1,310	3,431	4,080	

County	Household Population Growth Rate (%)									
	1980-1990	1990-2000	2000-2010	2010-2015	2015-2025	2025-2035	2035-2045	1980-2015	2015-2045	
Brazoria	13%	26%	31%	14%	27%	18%	35%	112%	104%	
Chambers	8%	29%	35%	8%	27%	9%	62%	104%	124%	
Fort Bend	74%	57%	66%	23%	32%	20%	20%	460%	91%	
Galveston	11%	15%	17%	13%	19%	15%	14%	68%	56%	
Harris	17%	20%	21%	10%	17%	15%	8%	86%	45%	
Liberty	11%	26%	8%	16%	11%	18%	54%	75%	101%	
Montgomery	41%	62%	55%	15%	46%	31%	22%	308%	134%	
Waller	22%	44%	34%	19%	22%	27%	71%	179%	166%	
<b>Region</b>	19%	25%	27%	12%	22%	17%	14%	111%	63%	

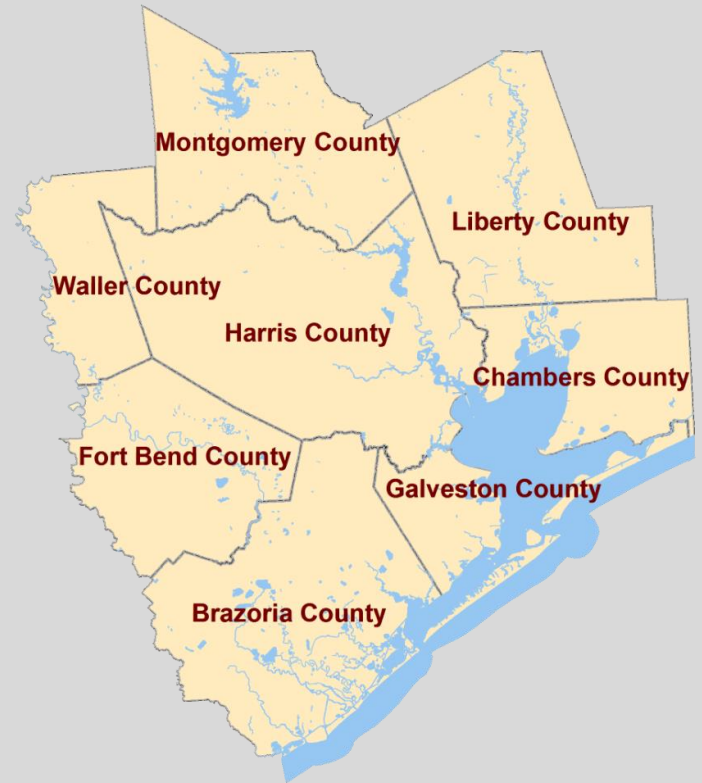


Sources  
 1980, 1990, 2000, and 2010: U.S. Decennial Census of Population  
 2015 to 2045: H-GAC Forecast (2018)

County	Jobs (Thousands)										
	1980	1990	2000	2010	2015	2020	2025	2030	2035	2040	2045
Brazoria	68	71	80	92	113	119	136	156	185	210	254
Chambers	7	6	8	10	16	25	26	26	26	26	31
Fort Bend	38	51	94	142	213	233	259	284	305	324	341
Galveston	73	80	93	101	130	134	136	139	140	143	147
Harris	1,381	1,538	1,944	2,107	2,481	2,662	2,853	3,039	3,213	3,394	3,544
Liberty	14	14	17	18	18	19	20	21	22	25	30
Montgomery	26	43	83	139	204	235	256	270	288	305	320
Waller	6	8	11	15	20	25	27	30	31	32	35
<b>Region</b>	1,613	1,811	2,329	2,624	3,197	3,452	3,715	3,964	4,210	4,459	4,702

County	Jobs Change (Thousands)									
	1980-1990	1990-2000	2000-2010	2010-2015	2015-2025	2025-2035	2035-2045	1980-2015	2015-2045	
Brazoria	3	9	12	20	24	49	70	45	142	
Chambers	(1)	2	3	6	10	0	5	9	14	
Fort Bend	13	44	48	71	46	46	36	176	127	
Galveston	7	13	8	29	6	4	7	58	17	
Harris	157	405	163	374	372	360	331	1,100	1,063	
Liberty	0	2	1	1	2	2	8	5	12	
Montgomery	17	40	56	65	52	31	32	178	115	
Waller	2	3	4	5	8	4	4	14	15	
<b>Region</b>	198	518	295	573	518	495	492	1,584	1,505	

County	Jobs Growth Rate (%)									
	1980-1990	1990-2000	2000-2010	2010-2015	2015-2025	2025-2035	2035-2045	1980-2015	2015-2045	
Brazoria	5%	13%	15%	22%	21%	36%	38%	66%	126%	
Chambers	-19%	25%	36%	60%	59%	0%	18%	120%	88%	
Fort Bend	35%	86%	51%	50%	22%	18%	12%	469%	60%	
Galveston	10%	16%	8%	29%	5%	3%	5%	79%	13%	
Harris	11%	26%	8%	18%	15%	13%	10%	80%	43%	
Liberty	4%	17%	5%	5%	9%	11%	37%	34%	65%	
Montgomery	64%	92%	68%	47%	25%	12%	11%	676%	56%	
Waller	29%	40%	40%	33%	38%	13%	12%	238%	75%	
<b>Region</b>	12%	29%	13%	22%	16%	13%	12%	98%	47%	

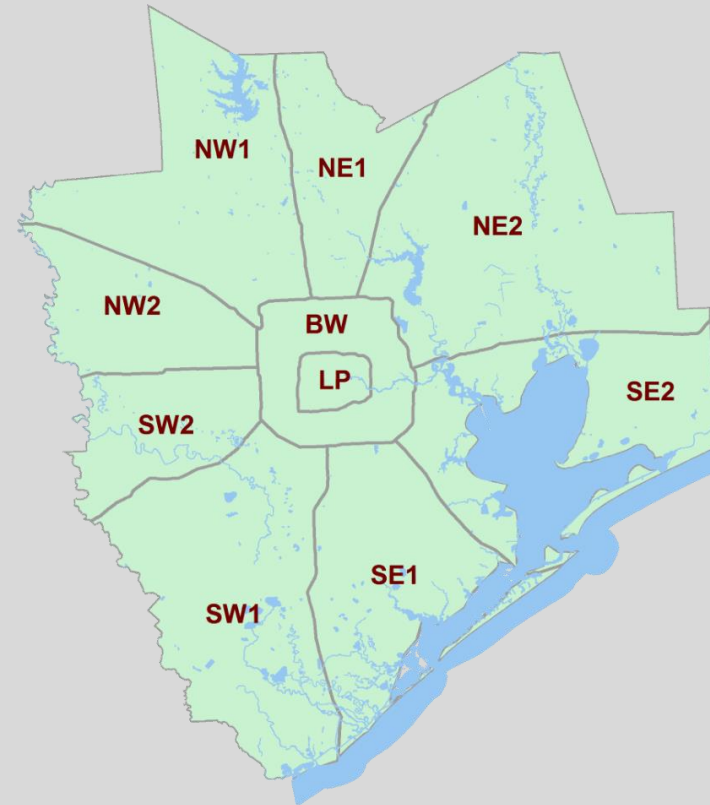


Sources  
1980, 1990, 2000, and 2010: U.S. Decennial Census of Population  
2015 to 2045: H-GAC Forecast (2018)

Section	Household Population (Thousands)										
	1980	1990	2000	2010	2015	2020	2025	2030	2035	2040	2045
BW	1,246	1,271	1,482	1,587	1,693	1,752	1,862	1,996	2,096	2,254	2,357
LP	481	412	433	441	548	606	620	621	657	697	719
NE1	111	157	197	328	358	436	496	570	633	682	729
NE2	158	213	271	366	376	422	503	583	673	730	786
NW1	196	353	549	820	913	1,049	1,163	1,303	1,477	1,570	1,632
NW2	51	135	205	373	445	543	655	733	783	812	829
SE1	207	252	312	394	437	477	527	567	599	670	758
SE2	299	346	399	444	460	496	514	541	576	591	607
SW1	163	202	270	378	446	521	626	714	770	868	980
SW2	207	340	477	683	838	911	946	978	1,018	1,071	1,197
Region	3,119	3,681	4,596	5,814	6,513	7,215	7,913	8,605	9,282	9,946	10,593

Section	Household Population Change (Thousands)									
	1980-1990	1990-2000	2000-2010	2010-2015	2015-2025	2025-2035	2035-2045	1980-2015	2015-2045	
BW	26	210	105	106	170	233	261	447	664	
LP	(69)	21	8	107	72	36	62	67	171	
NE1	45	40	131	31	138	137	96	247	371	
NE2	55	59	95	10	127	170	113	218	410	
NW1	157	196	271	93	251	314	154	716	719	
NW2	84	69	168	71	211	128	45	393	384	
SE1	45	60	82	43	90	73	159	230	321	
SE2	47	54	44	17	53	63	30	162	146	
SW1	39	68	108	67	180	144	210	282	534	
SW2	133	137	206	155	108	72	179	631	359	
Region	562	915	1,219	698	1,400	1,369	1,310	3,394	4,080	

Section	Household Population Growth Rate (%)									
	1980-1990	1990-2000	2000-2010	2010-2015	2015-2025	2025-2035	2035-2045	1980-2015	2015-2045	
BW	2%	17%	7%	7%	10%	13%	12%	36%	39%	
LP	-14%	5%	2%	24%	13%	6%	10%	14%	31%	
NE1	41%	26%	66%	9%	38%	28%	15%	222%	103%	
NE2	35%	28%	35%	3%	34%	34%	17%	138%	109%	
NW1	80%	55%	49%	11%	27%	27%	10%	365%	79%	
NW2	163%	51%	82%	19%	47%	20%	6%	764%	86%	
SE1	22%	24%	26%	11%	21%	14%	26%	111%	74%	
SE2	16%	16%	11%	4%	12%	12%	5%	54%	32%	
SW1	24%	34%	40%	18%	41%	23%	27%	173%	120%	
SW2	65%	40%	43%	23%	13%	8%	18%	306%	43%	
Region	18%	25%	27%	12%	22%	17%	14%	109%	63%	

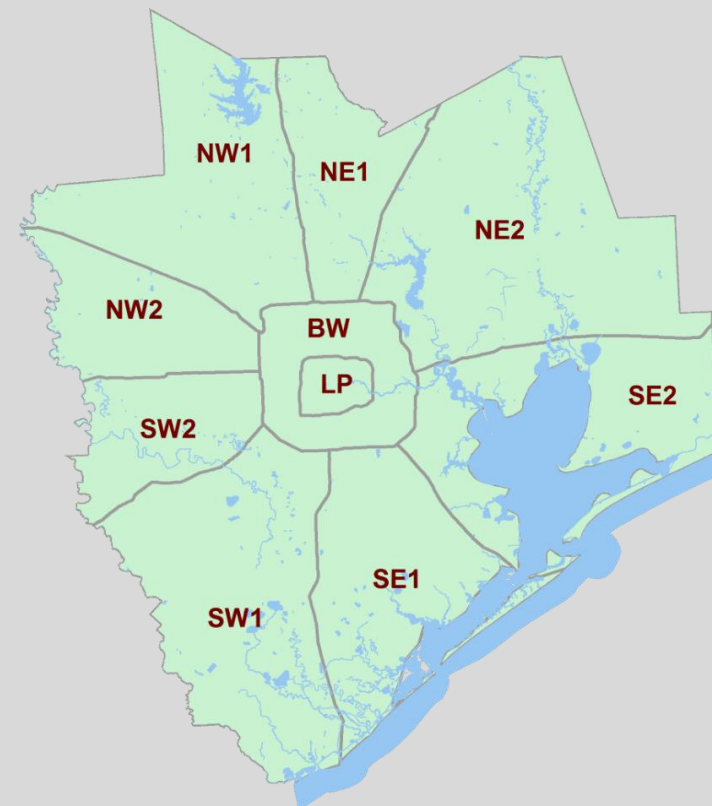


Sources  
1980, 1990, 2000, and 2010: U.S. Decennial Census of Population  
2015 to 2045: H-GAC Forecast (2018)

Section	Jobs (Thousands)										
	1980	1990	2000	2010	2015	2020	2025	2030	2035	2040	2045
BW	n/a	583	692	696	851	911	967	1,039	1,096	1,176	1,255
LP	n/a	529	572	622	662	691	717	735	751	764	773
NE1	n/a	78	119	137	166	185	205	214	224	237	255
NE2	n/a	56	73	72	107	117	133	146	157	166	178
NW1	n/a	93	191	278	375	417	441	456	474	498	525
NW2	n/a	38	85	112	184	220	273	326	403	453	474
SE1	n/a	64	85	82	127	135	145	163	185	208	249
SE2	n/a	193	220	221	260	278	284	288	289	296	305
SW1	n/a	53	83	103	149	162	188	208	230	247	268
SW2	n/a	124	165	197	315	335	362	389	401	413	420
Region	1,613	1,811	2,284	2,519	3,197	3,452	3,715	3,964	4,210	4,459	4,702

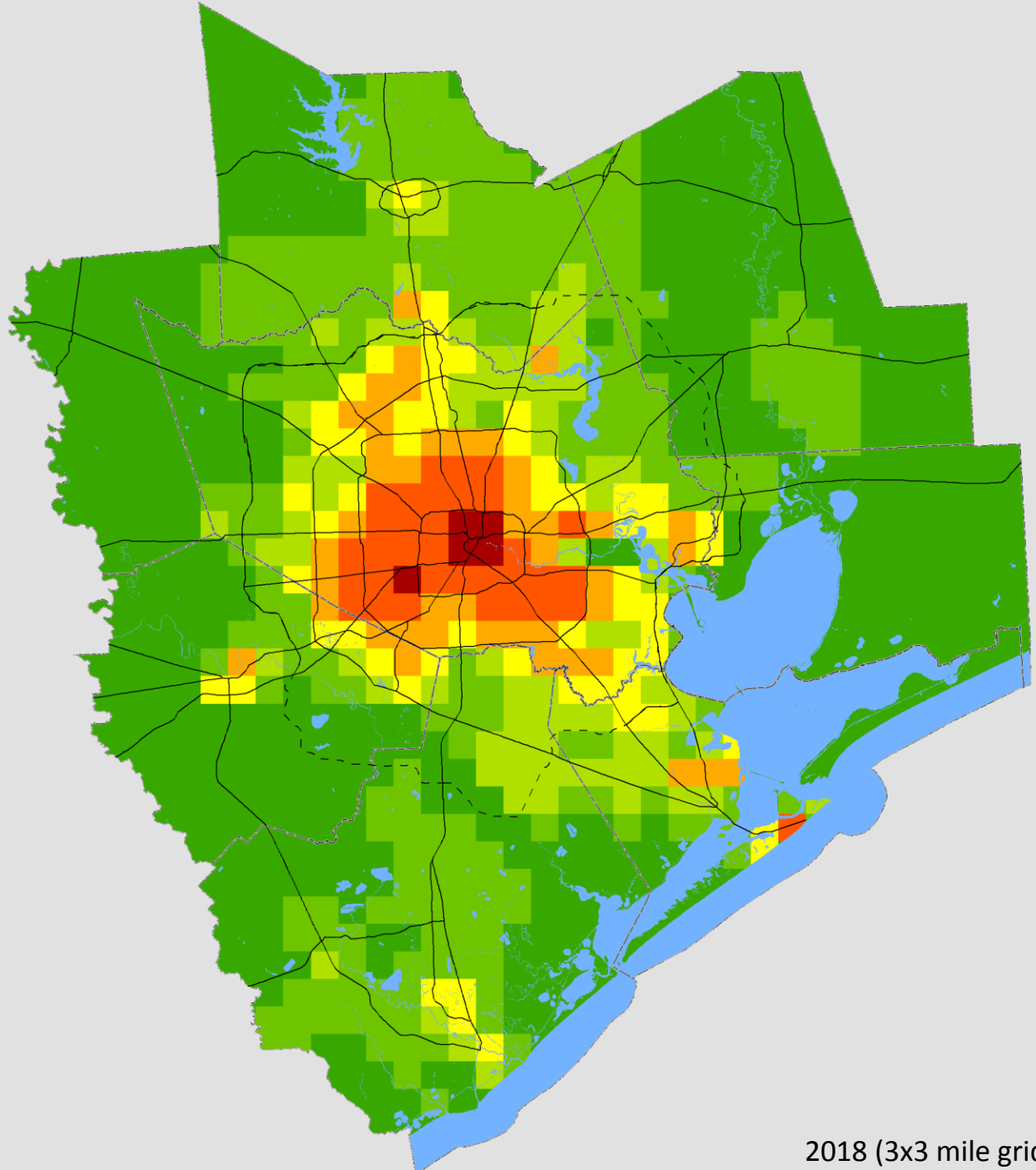
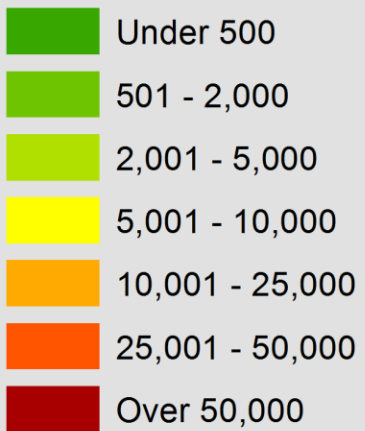
Section	Jobs Change (Thousands)									
	1980-1990	1990-2000	2000-2010	2010-2015	2015-2025	2025-2035	2035-2045	1990-2015	2015-2045	
BW	n/a	108	4	155	116	130	159	267	405	
LP	n/a	43	50	41	55	34	22	133	111	
NE1	n/a	40	18	29	39	19	30	87	89	
NE2	n/a	17	(1)	36	25	24	21	52	71	
NW1	n/a	98	87	97	65	33	51	282	149	
NW2	n/a	48	26	73	89	130	71	147	290	
SE1	n/a	21	(3)	45	18	40	64	63	122	
SE2	n/a	26	1	39	24	5	16	67	45	
SW1	n/a	30	20	46	39	42	39	96	119	
SW2	n/a	41	33	117	48	38	19	191	105	
Region	198	473	235	678	518	495	492	1,385	1,505	

Section	Jobs Growth Rate (%)									
	1980-1990	1990-2000	2000-2010	2010-2015	2015-2025	2025-2035	2035-2045	1990-2015	2015-2045	
BW	n/a	19%	1%	22%	14%	13%	14%	46%	48%	
LP	n/a	8%	9%	7%	8%	5%	3%	25%	17%	
NE1	n/a	52%	15%	21%	24%	9%	13%	112%	54%	
NE2	n/a	31%	-2%	50%	24%	18%	13%	93%	66%	
NW1	n/a	105%	45%	35%	17%	8%	11%	302%	40%	
NW2	n/a	127%	31%	65%	48%	48%	18%	390%	157%	
SE1	n/a	32%	-4%	56%	14%	28%	34%	98%	96%	
SE2	n/a	14%	1%	18%	9%	2%	6%	35%	17%	
SW1	n/a	57%	24%	45%	26%	22%	17%	182%	80%	
SW2	n/a	33%	20%	59%	15%	11%	5%	154%	33%	
Region	12%	26%	10%	27%	16%	13%	12%	76%	47%	



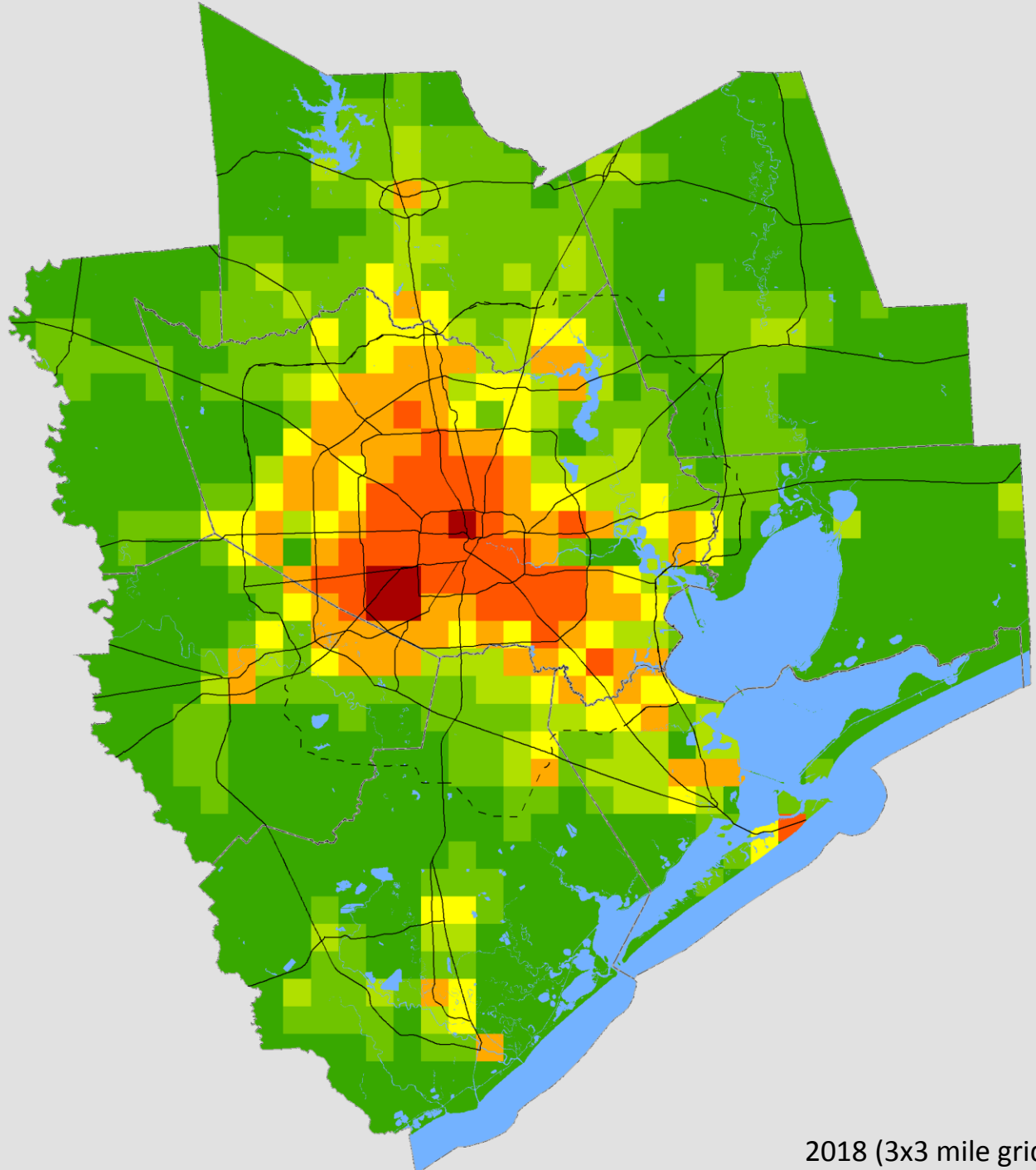
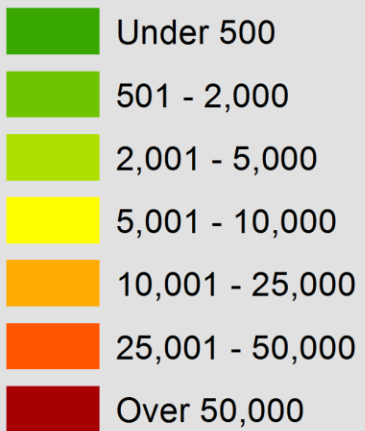
Sources  
1980, 1990, 2000, and 2010: U.S. Decennial Census of Population  
2015 to 2045: H-GAC Forecast (2018)

## 1980 Population



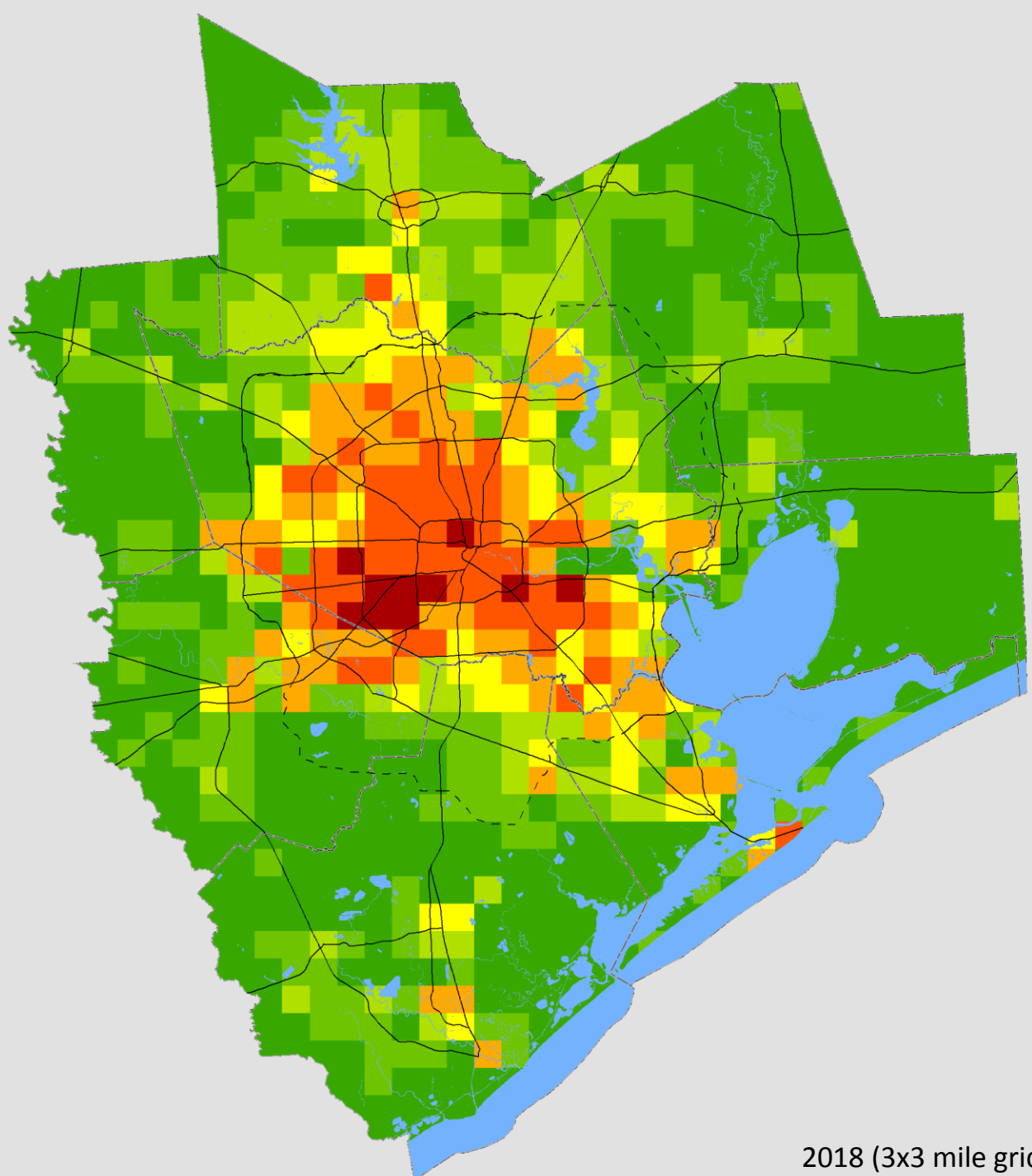
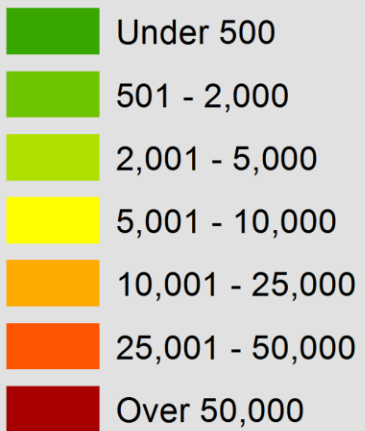
2018 (3x3 mile grid)

## 1990 Population



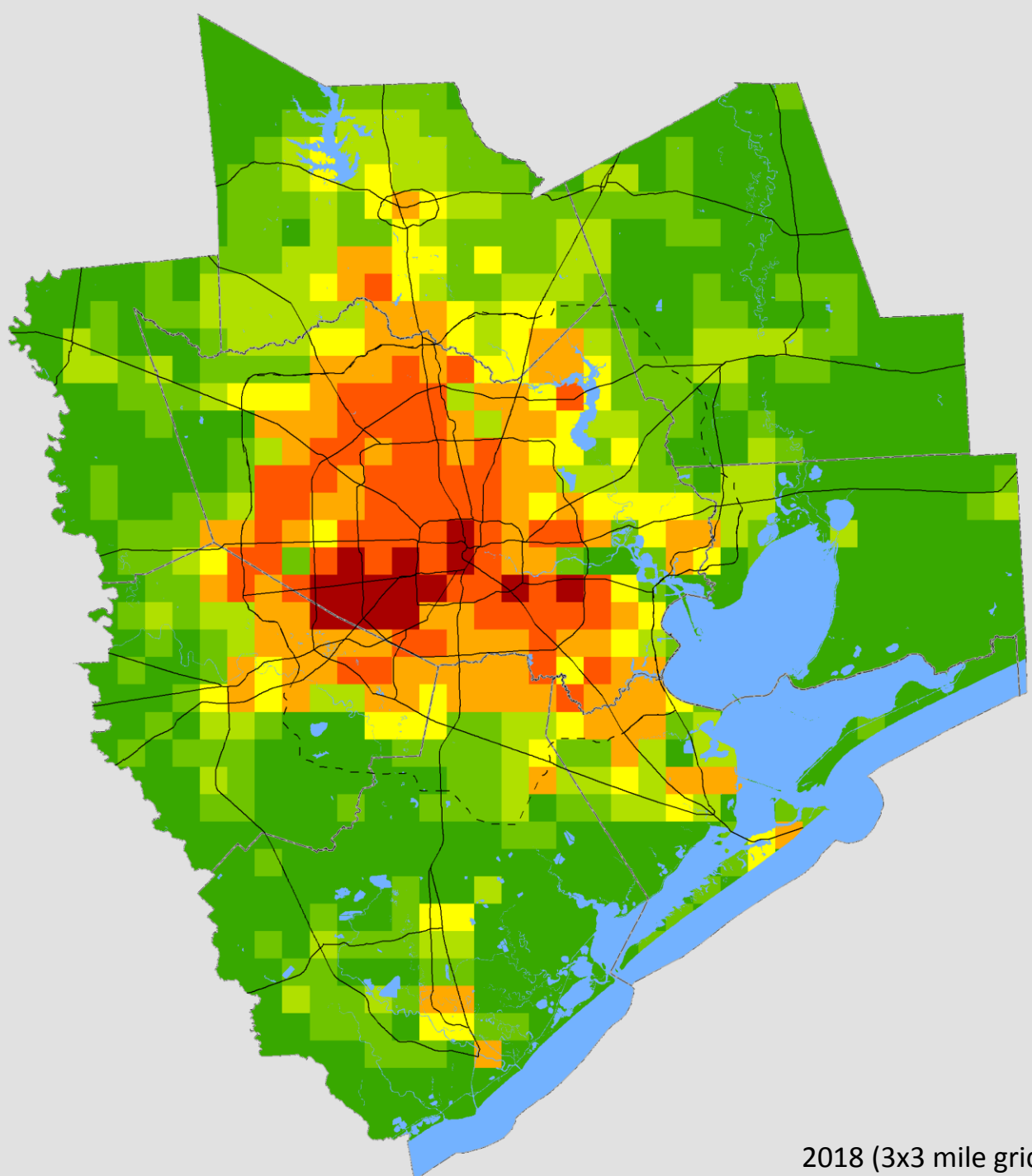
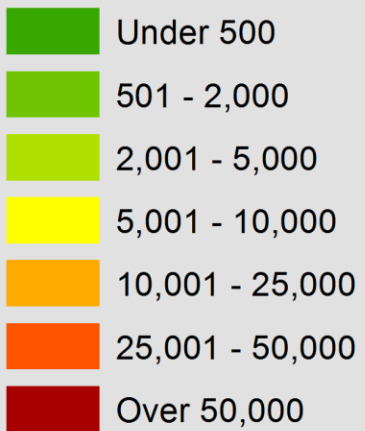
2018 (3x3 mile grid)

## 2000 Population



2018 (3x3 mile grid)

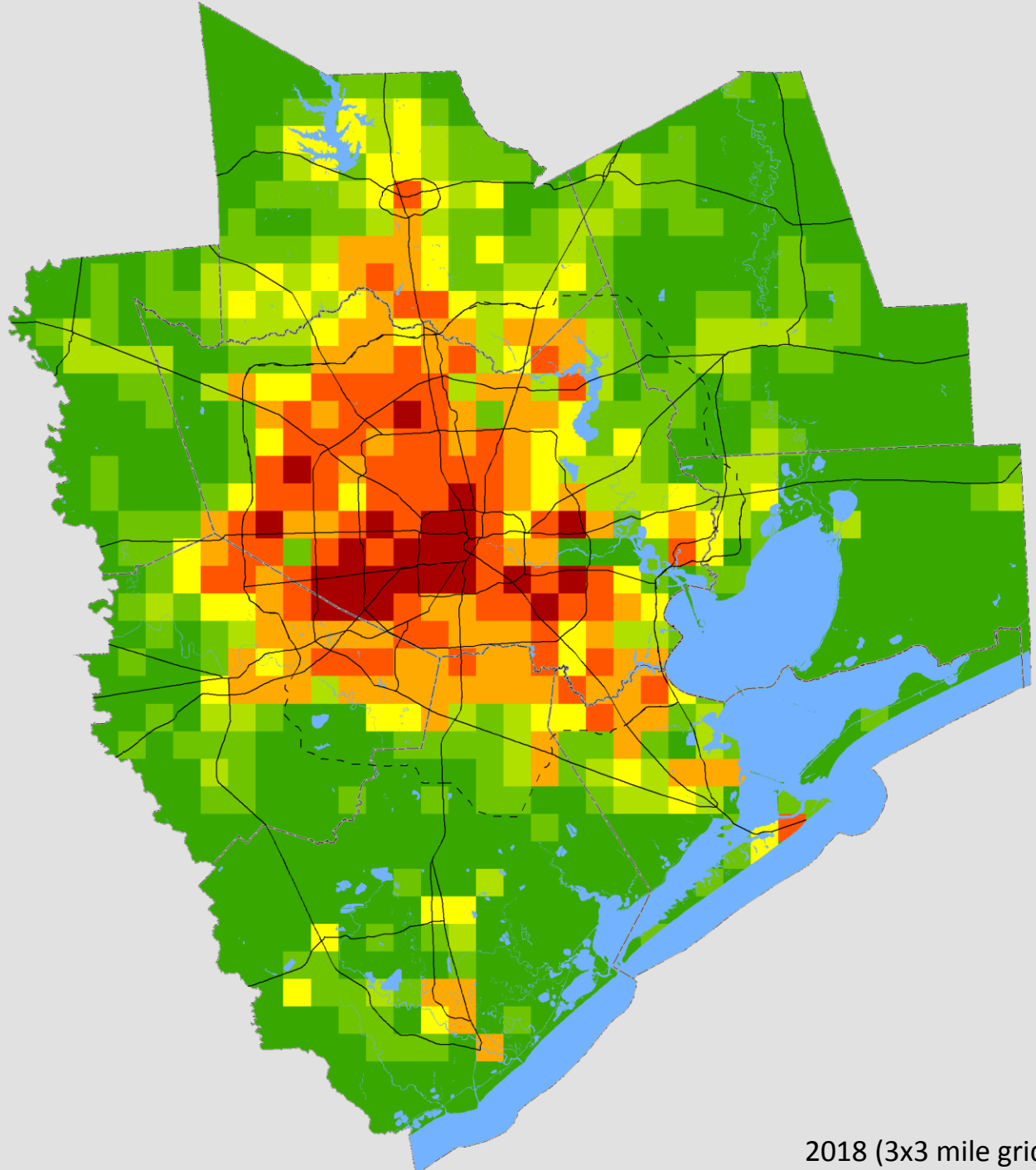
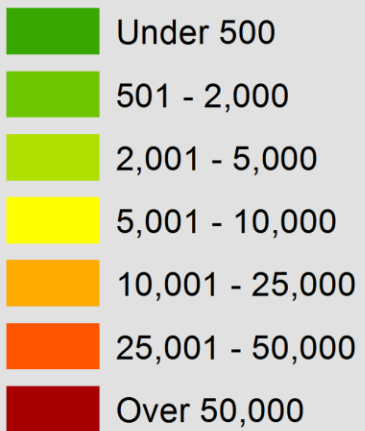
## 2010 Population



2018 (3x3 mile grid)

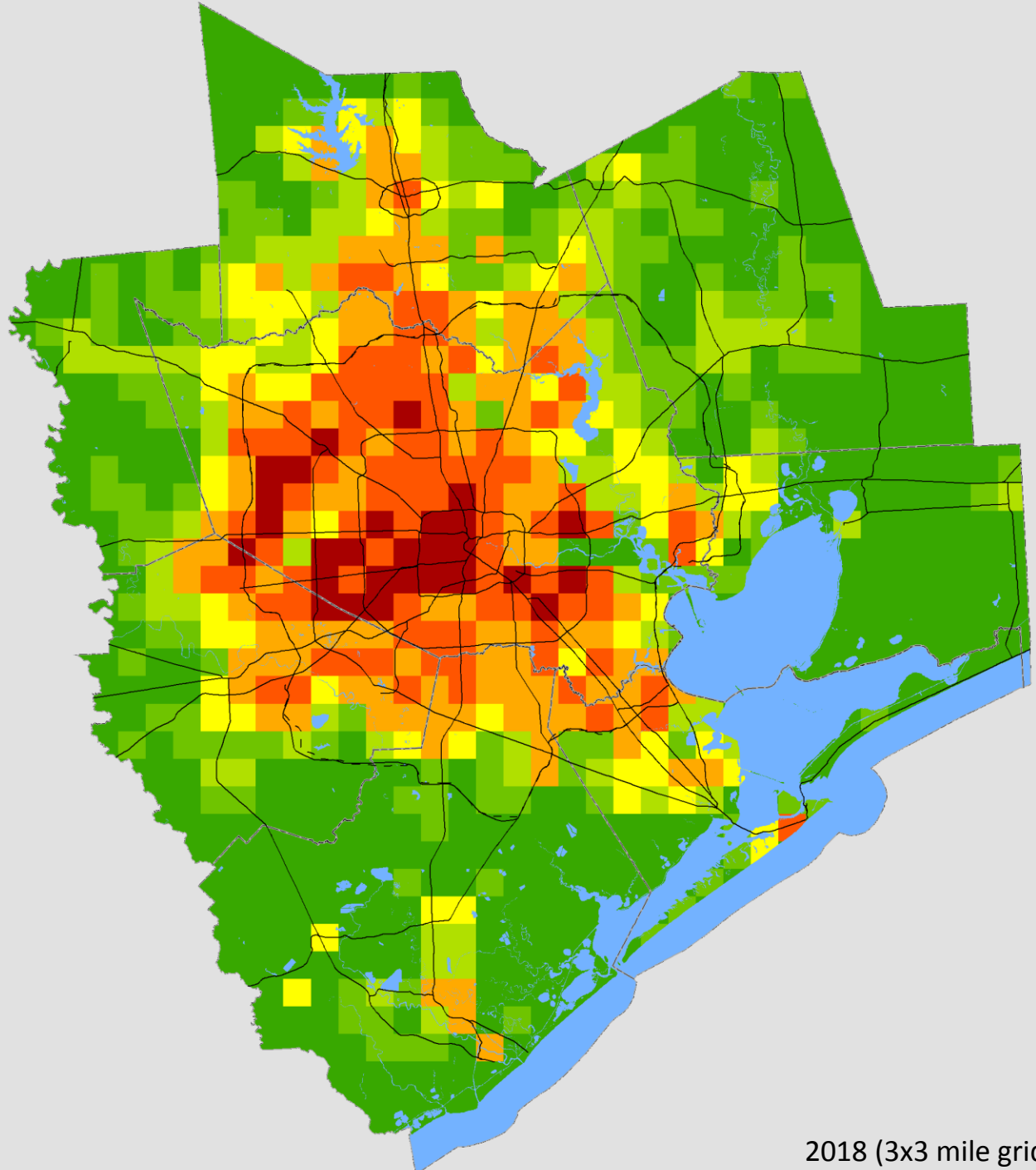
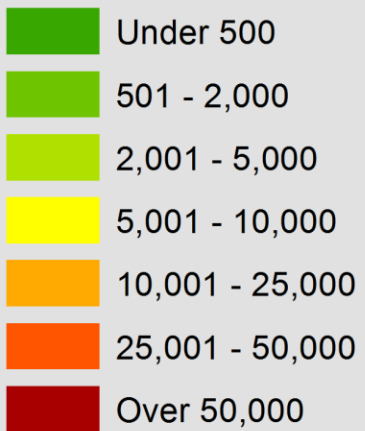


## 2015 Population



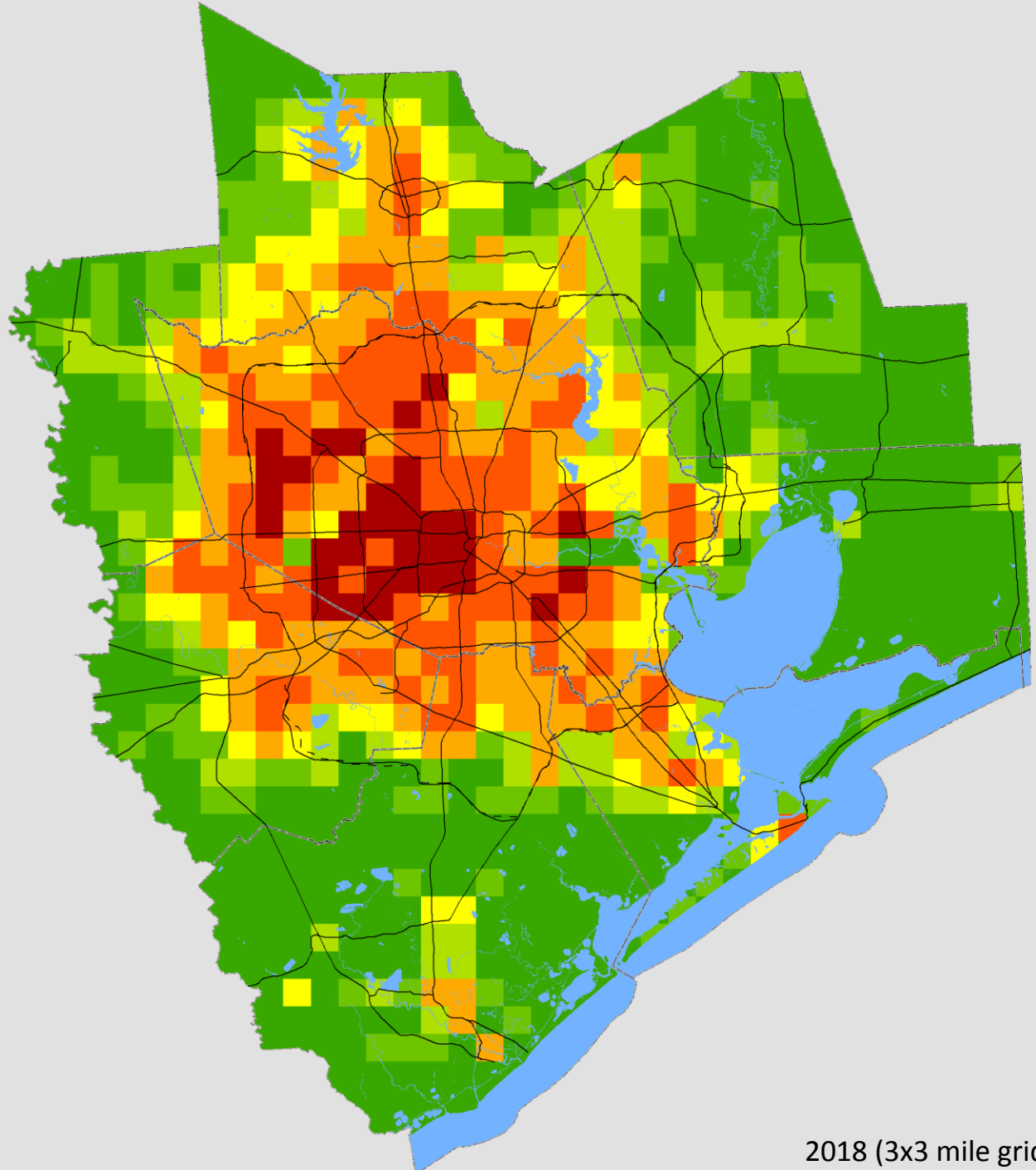
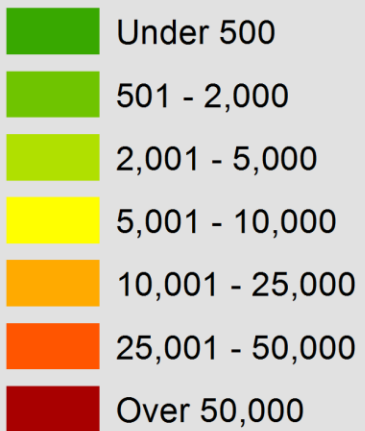
2018 (3x3 mile grid)

## 2025 Population



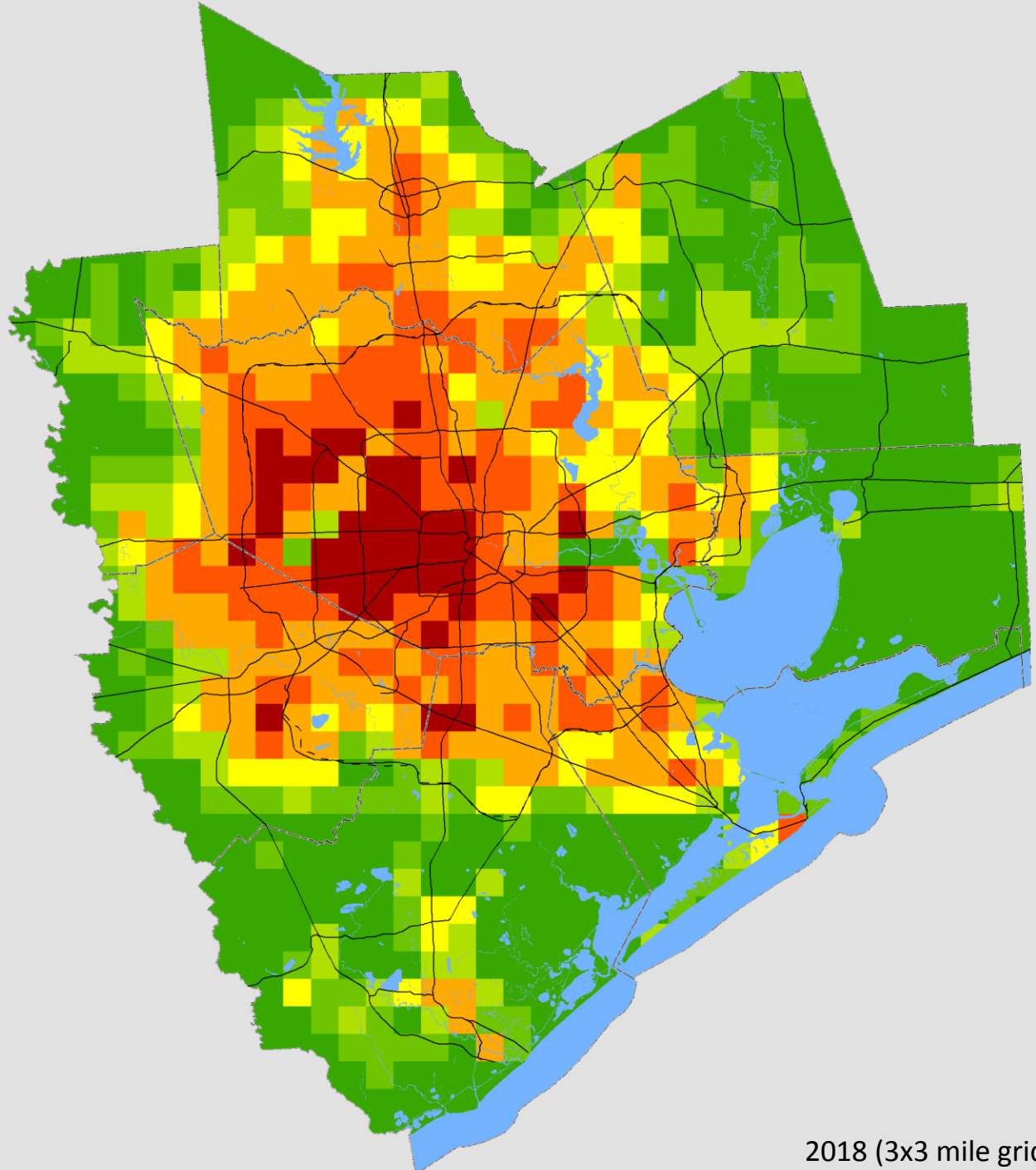
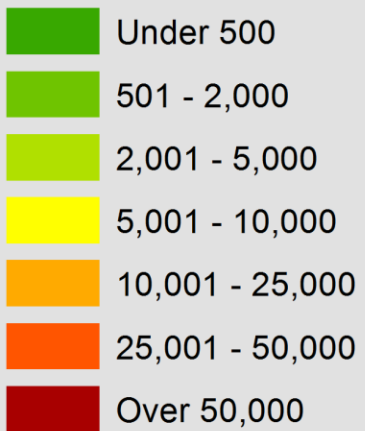
2018 (3x3 mile grid)

## 2035 Population



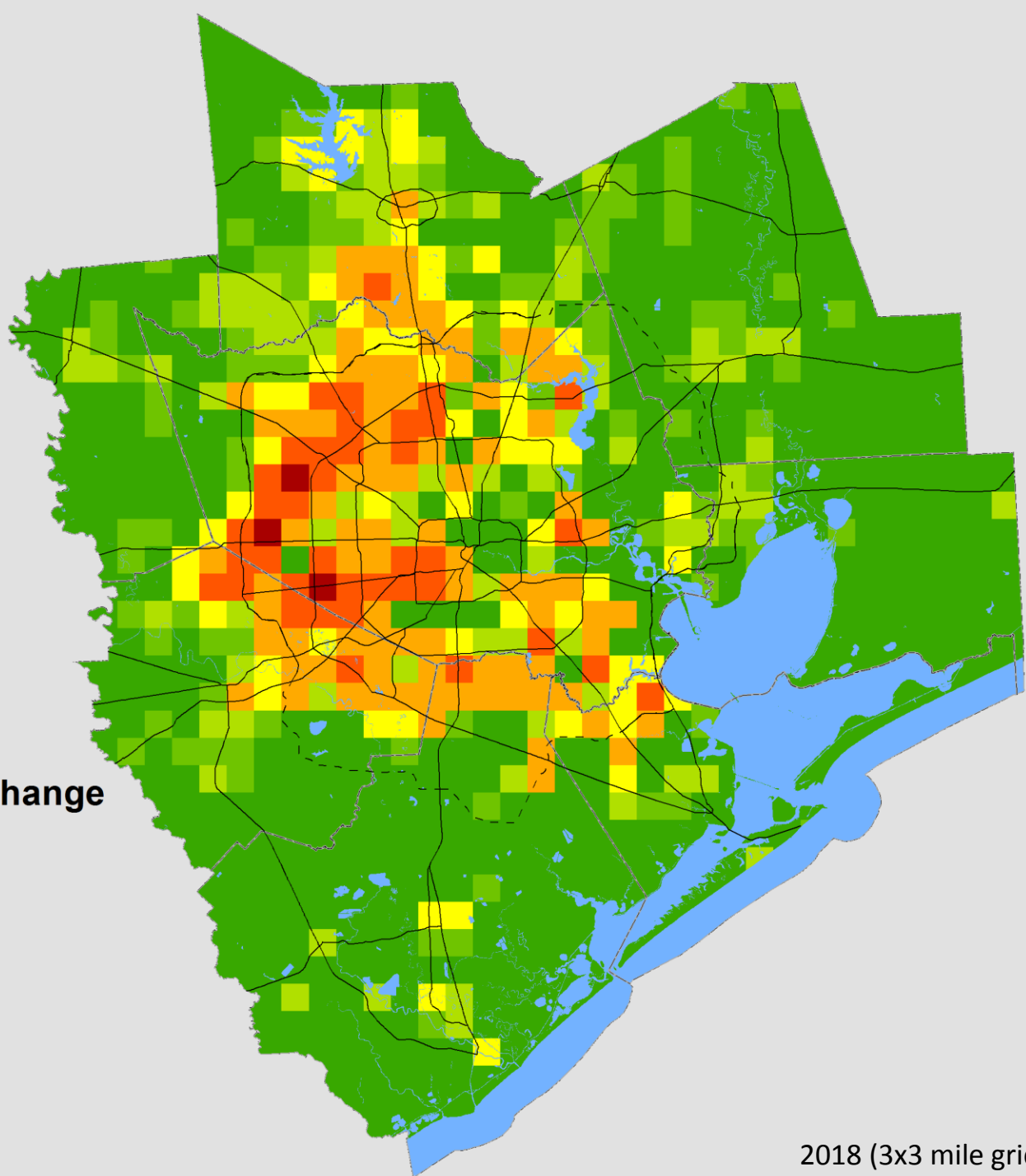
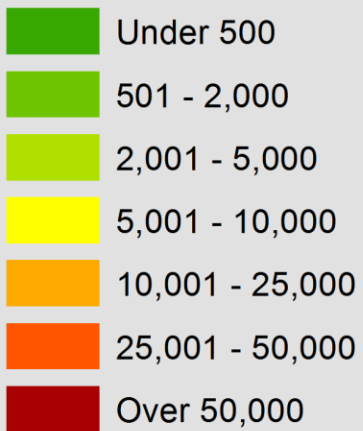
2018 (3x3 mile grid)

## 2045 Population



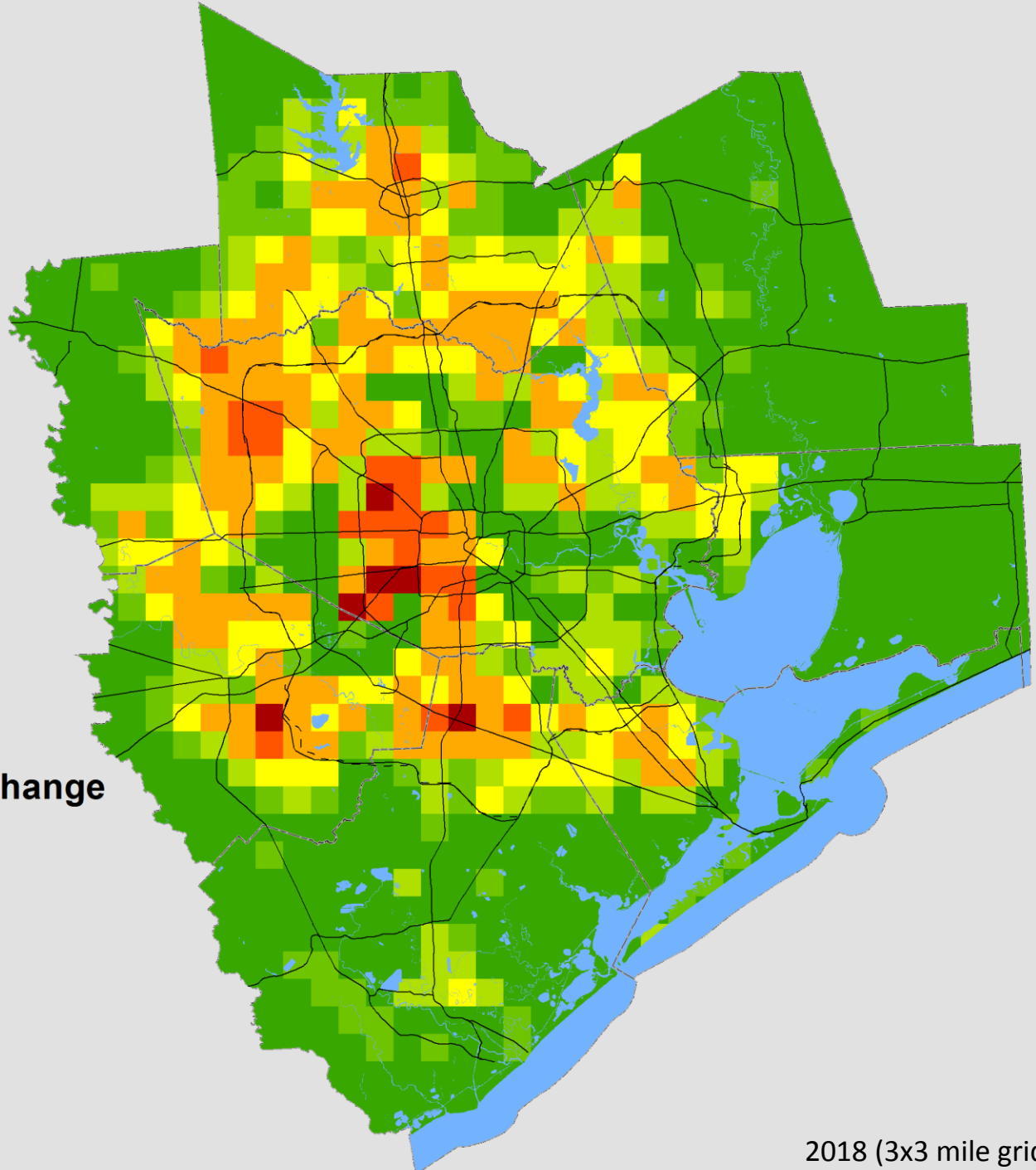
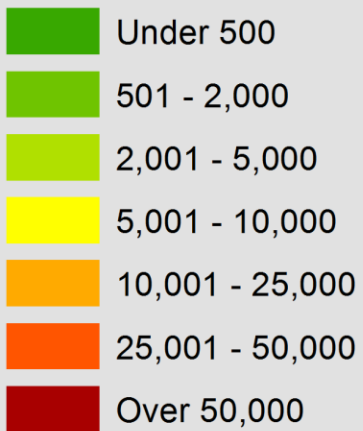
2018 (3x3 mile grid)

## 1980-2015 Population Change



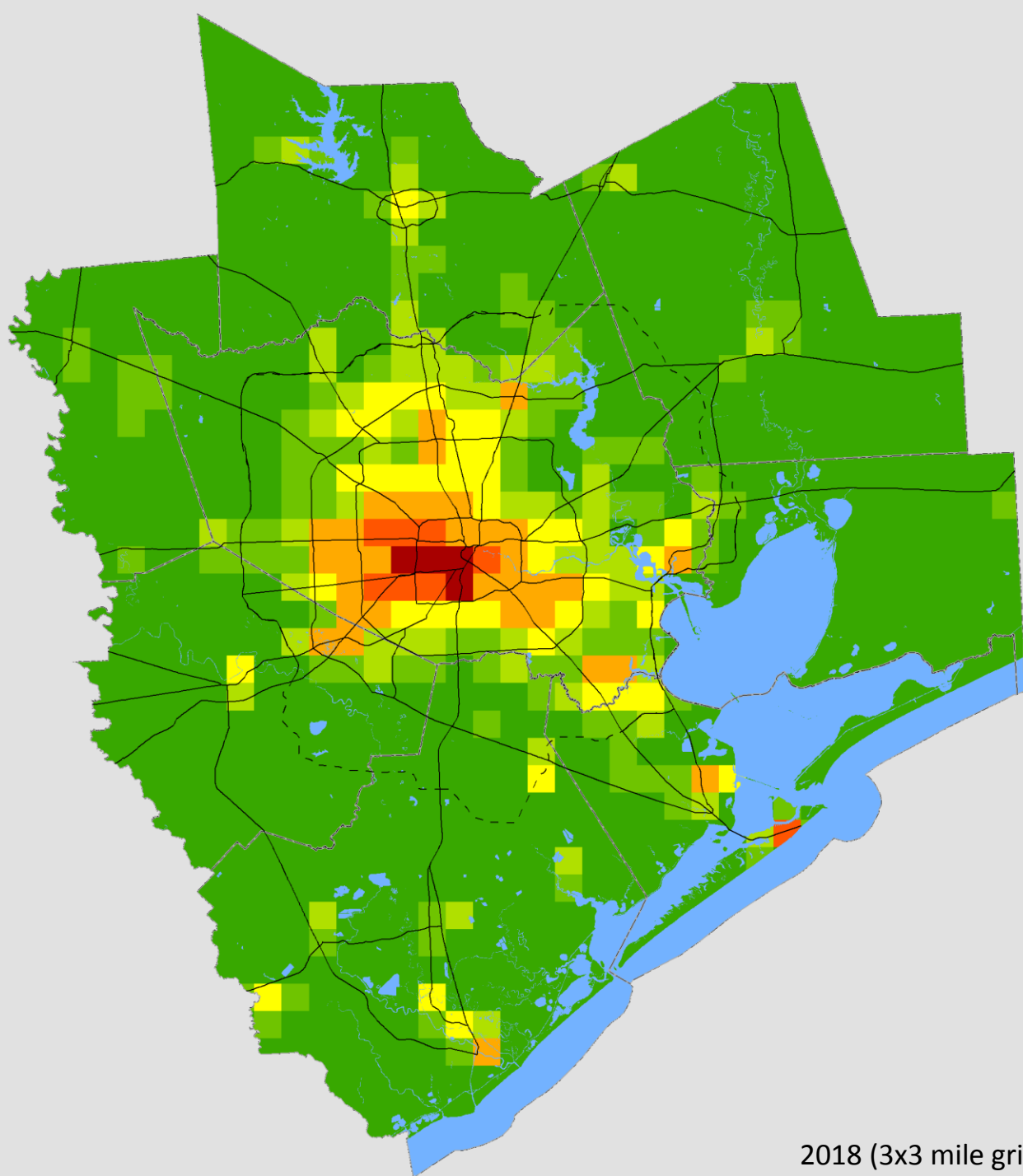
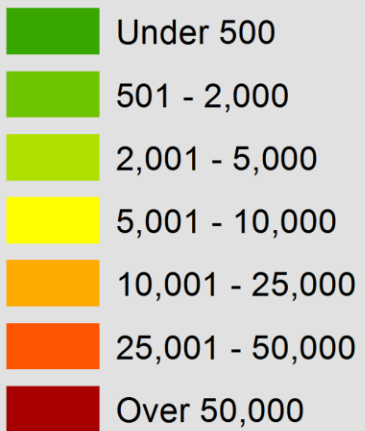
2018 (3x3 mile grid)

## 2015-2045 Population Change

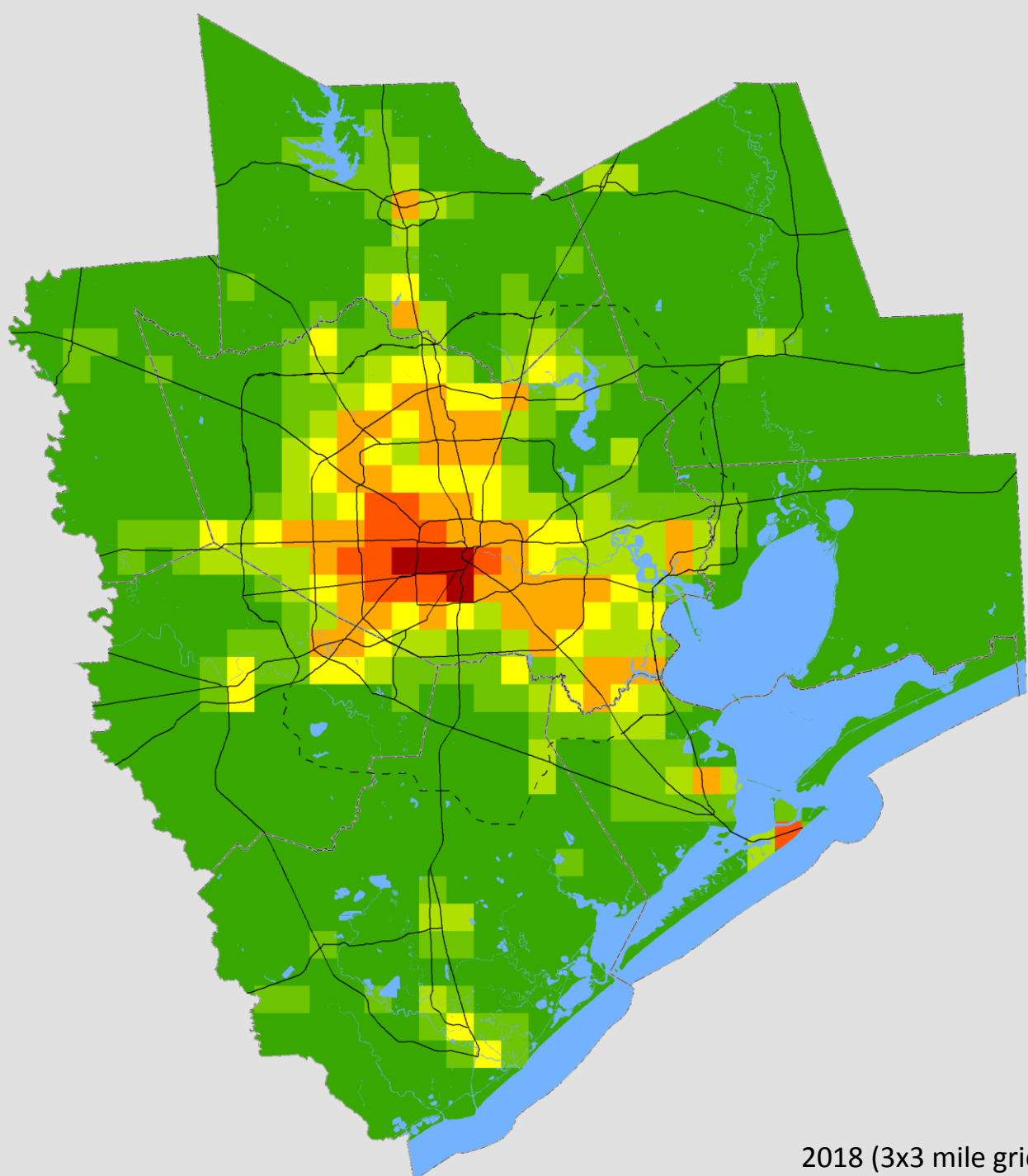
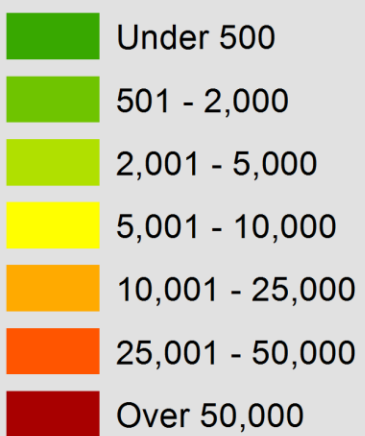


2018 (3x3 mile grid)

## 1990 Jobs



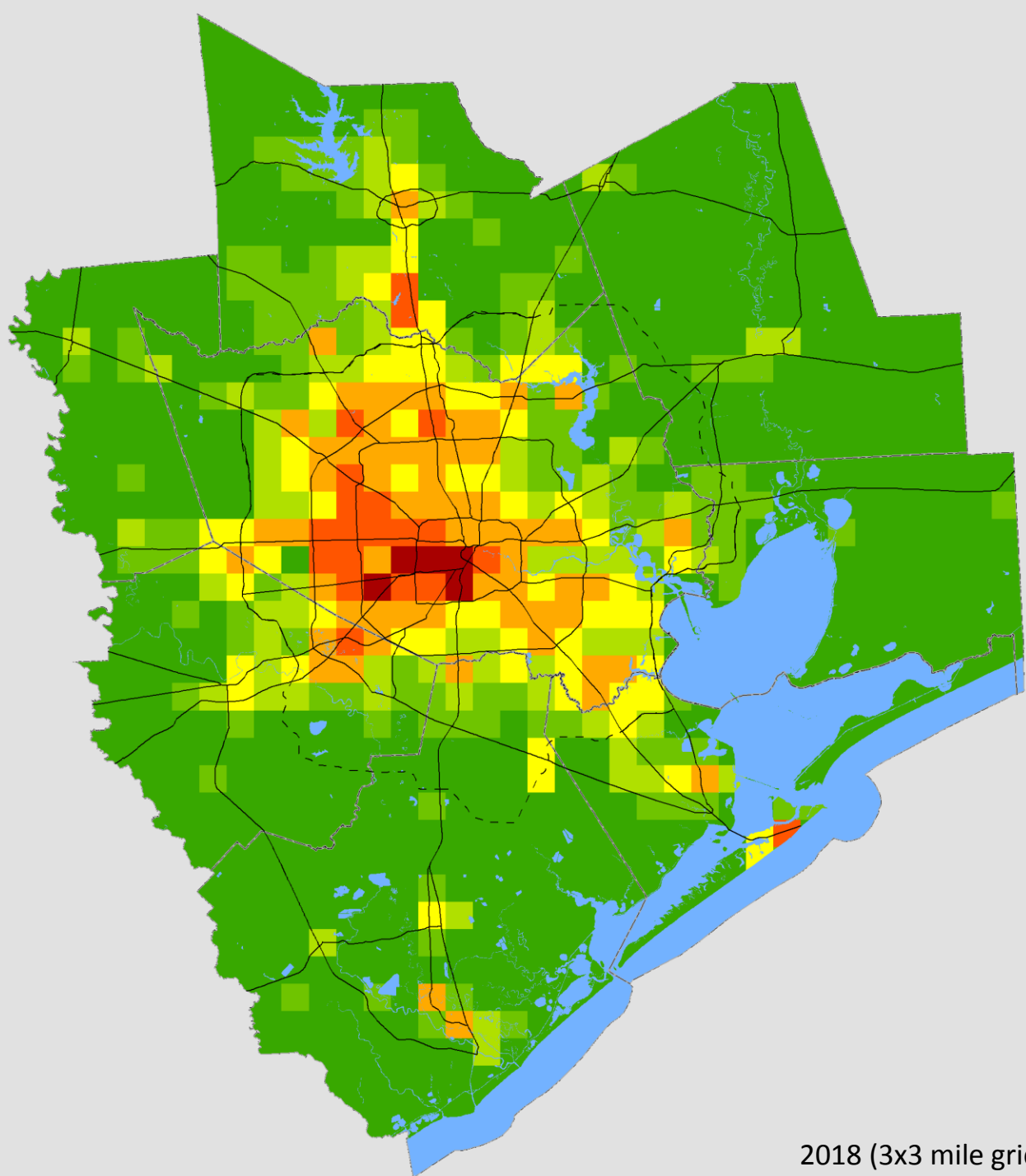
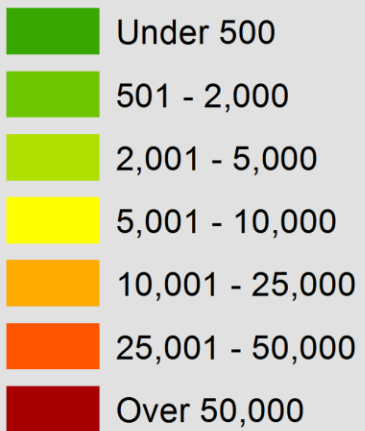
## 2000 Jobs



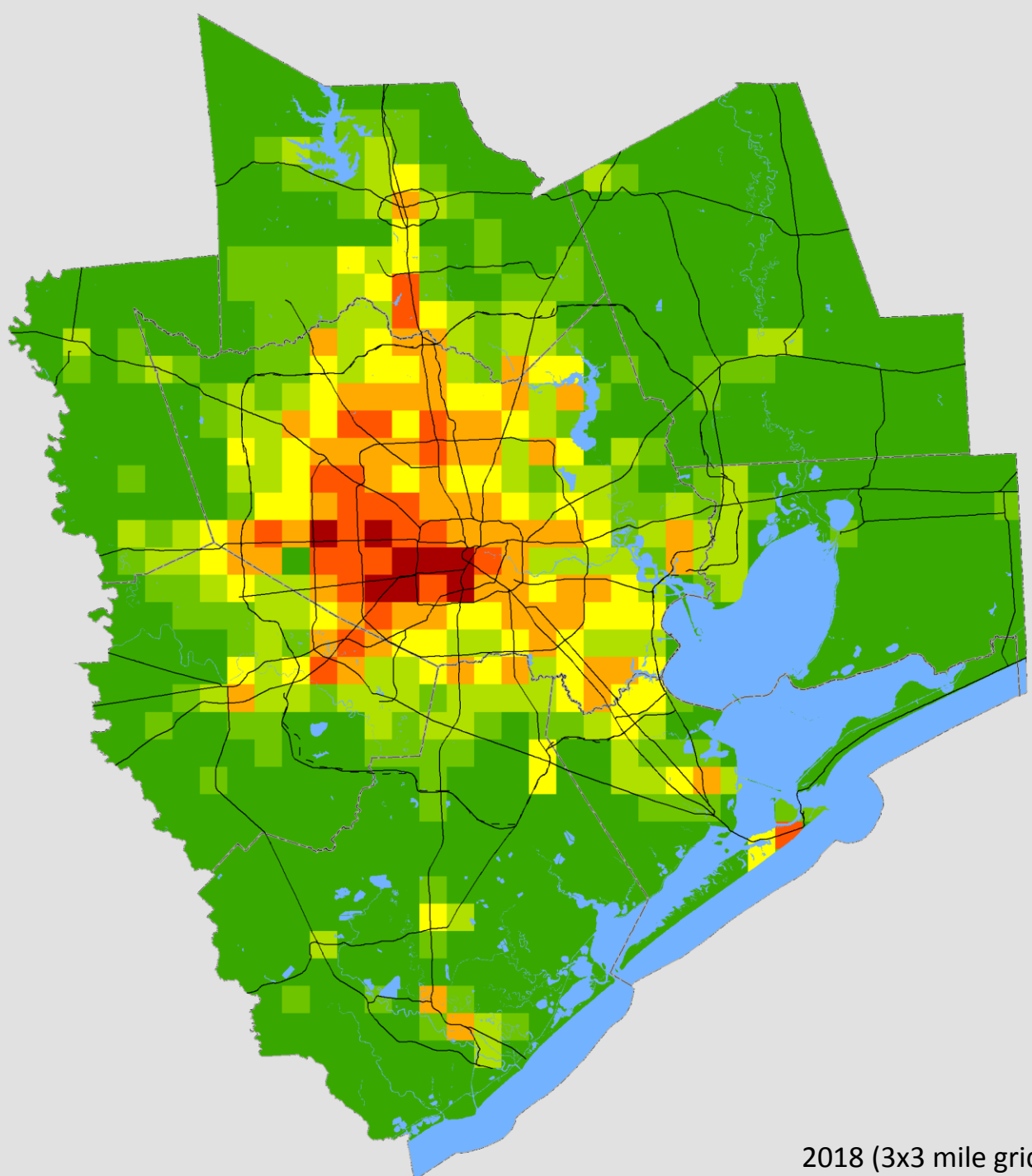
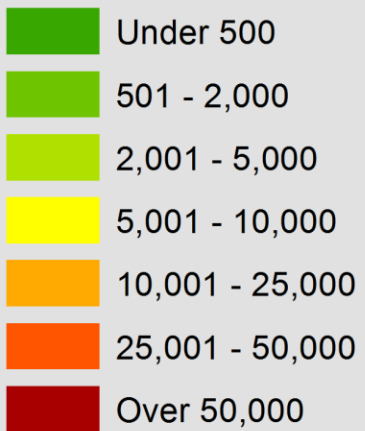
2018 (3x3 mile grid)



## 2015 Jobs

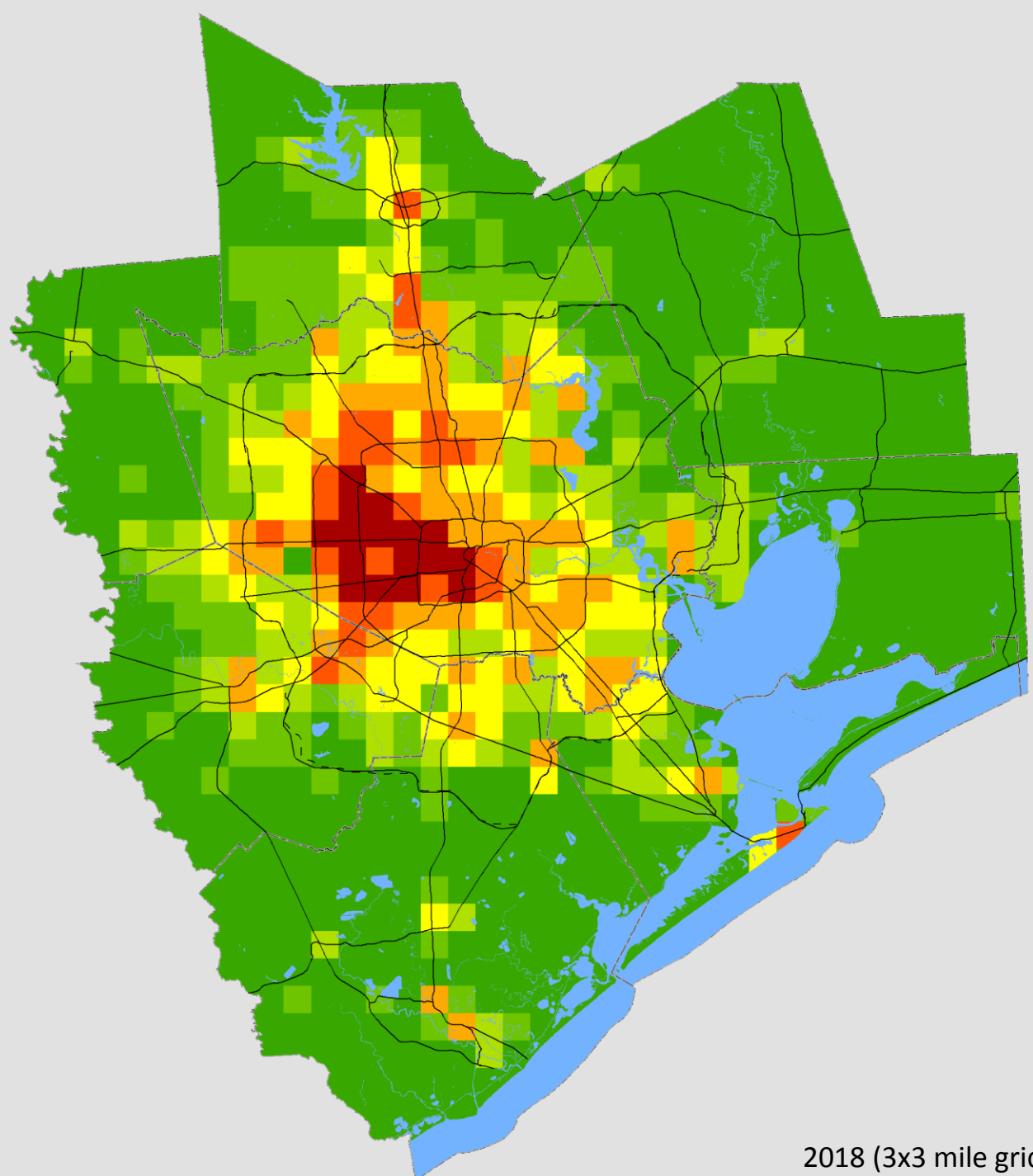
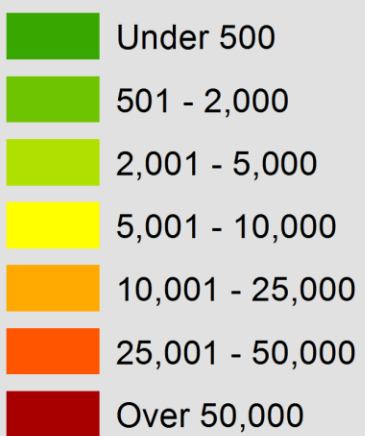


## 2025 Jobs

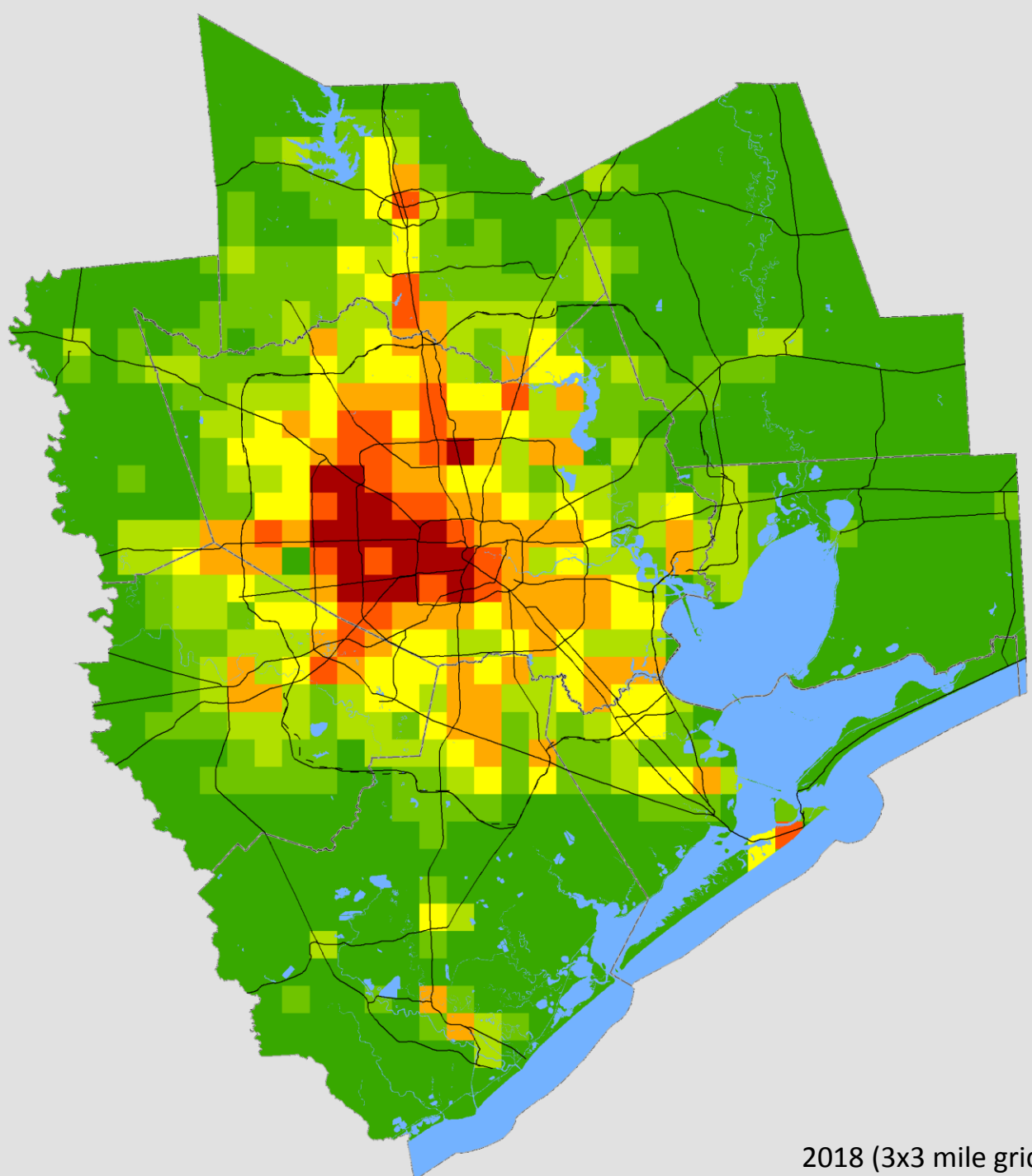
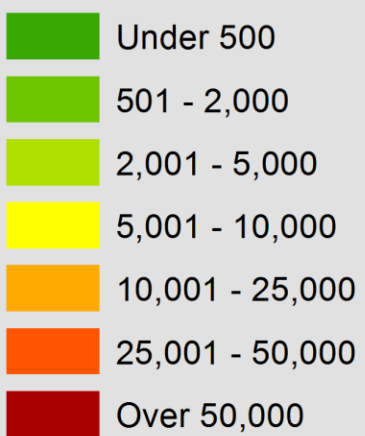


2018 (3x3 mile grid)

## 2035 Jobs

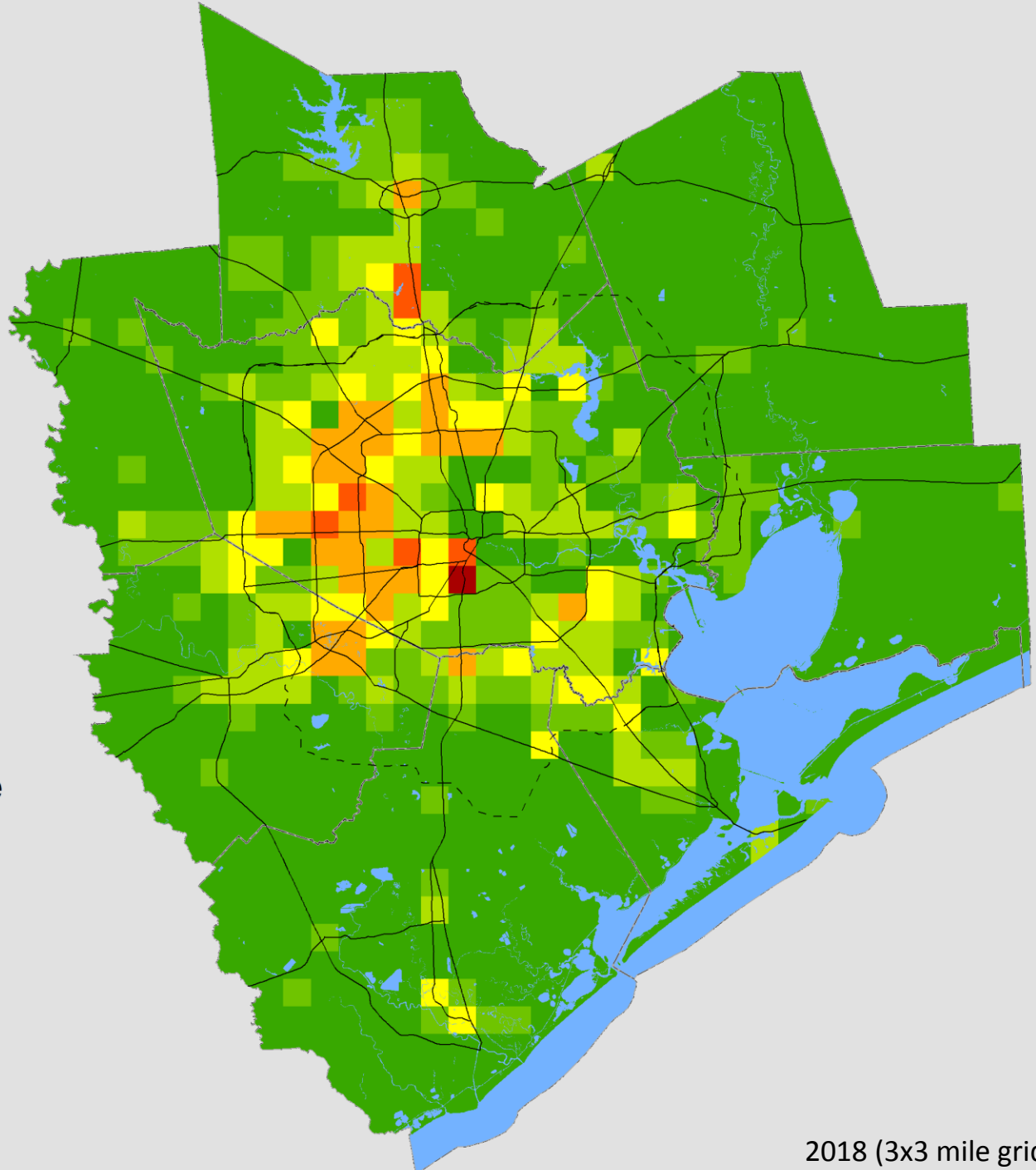
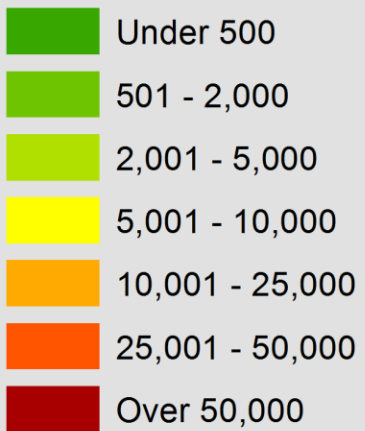


## 2045 Jobs



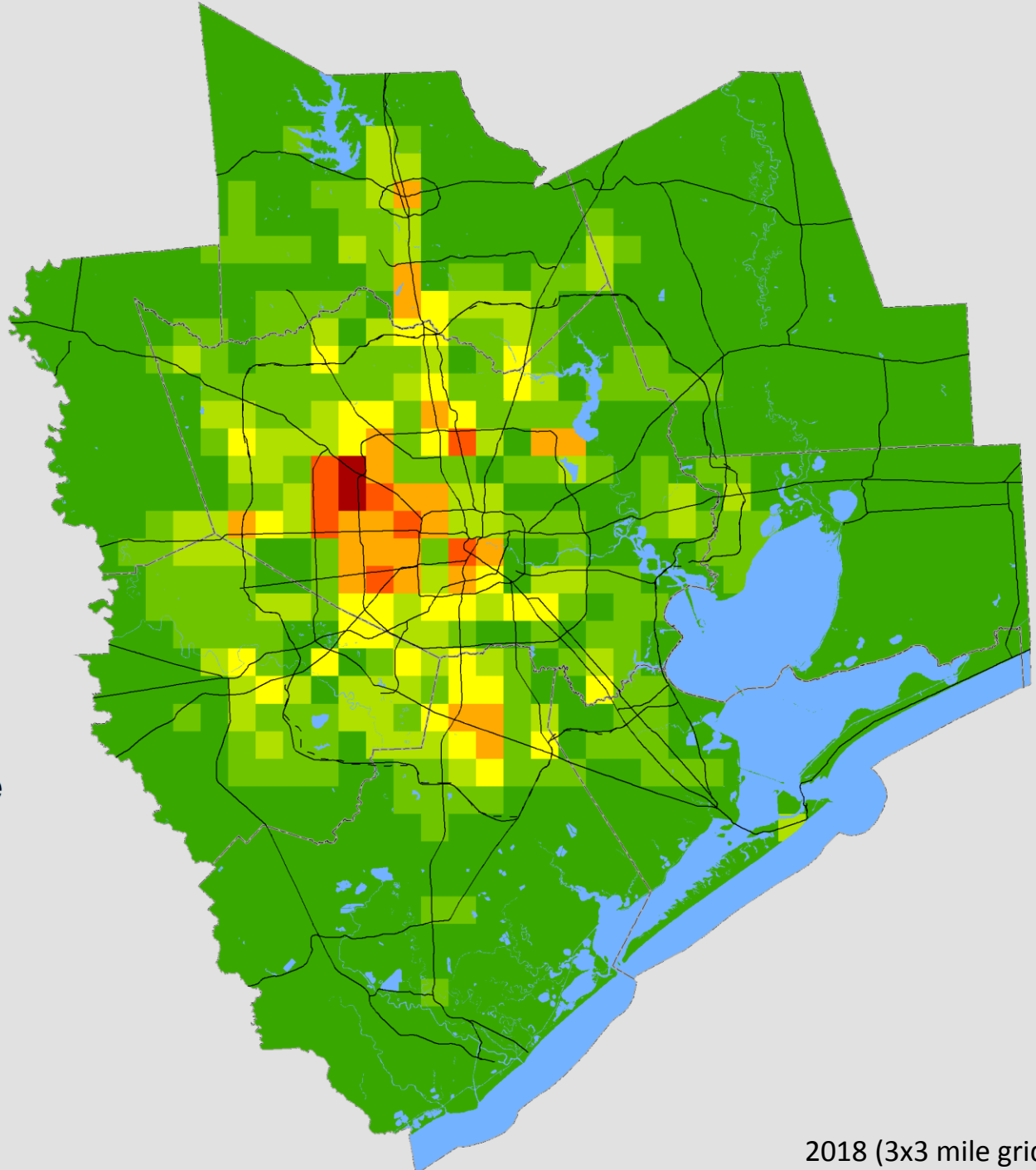
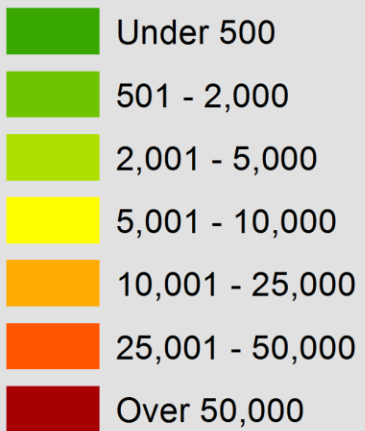
2018 (3x3 mile grid)

## 1990-2015 Jobs Change



2018 (3x3 mile grid)

## 2015-2045 Jobs Change



2018 (3x3 mile grid)