



Northside Livable Centers Study

Community Workshop #1

Existing Conditions and Draft Alternative

January 14, 2010

AGENDA FOR ADVISORY COMMUNITY WORKSHOP #1

1. Background and Project Overview
2. Ongoing and Previous Studies
3. Plan Principles
4. Draft Alternative Overview
5. Small Group Discussions
6. Reports Back
7. Next Steps

A background image showing a street scene. On the left is a large, multi-story building with a red-tiled roof and arched windows. A tall palm tree stands in front of the building. In the foreground, a dark blue sedan is parked on the street, with a white SUV behind it. The scene is brightly lit, suggesting a sunny day.

BACKGROUND AND PROJECT OVERVIEW

NORTHSIDE | LIVABLE CENTERS STUDY

**VAN METER
WILLIAMS
POLLACK ^{LLP}**

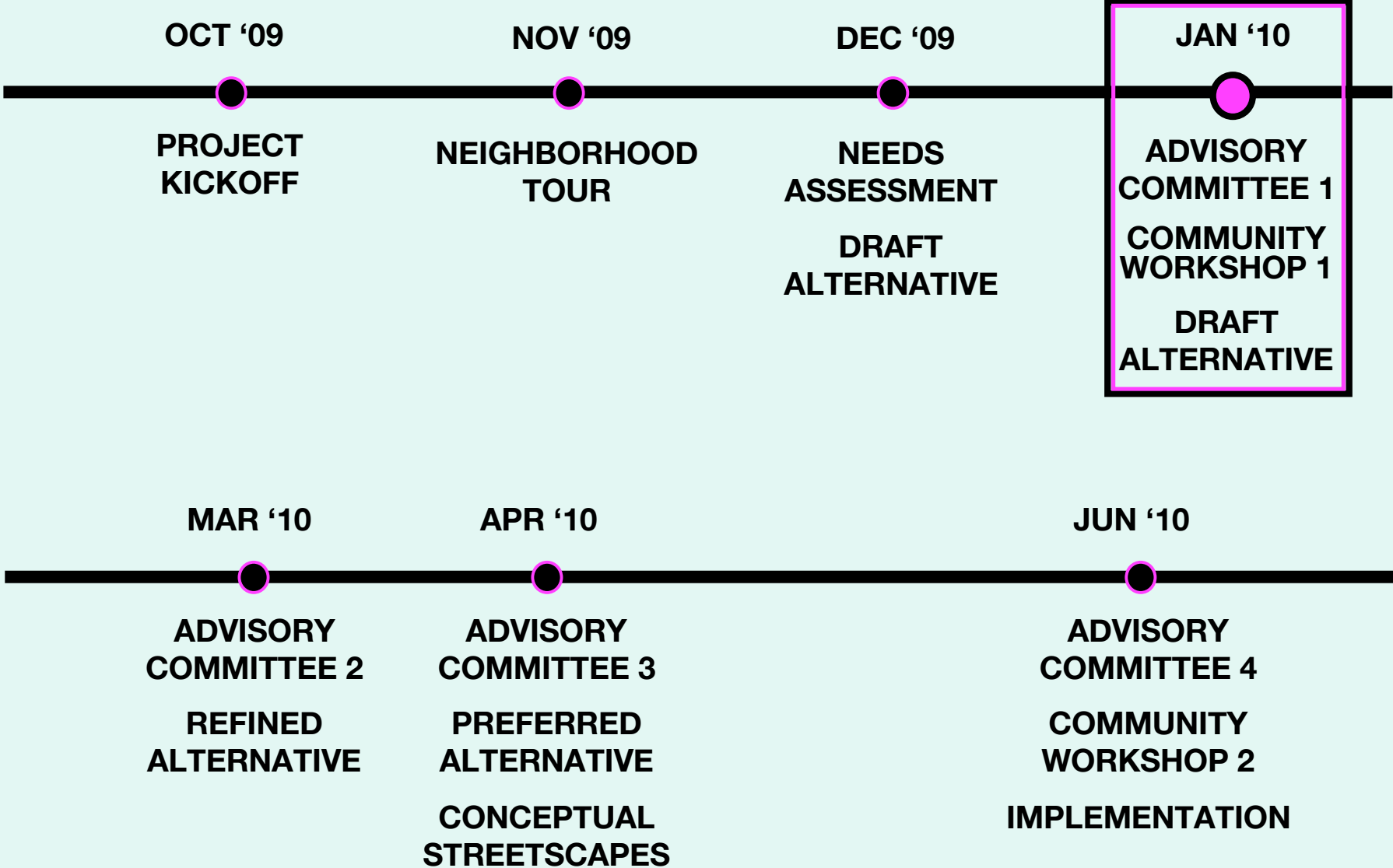
THE LIVABLE CENTERS PROGRAM

Seeks to create neighborhoods that are:

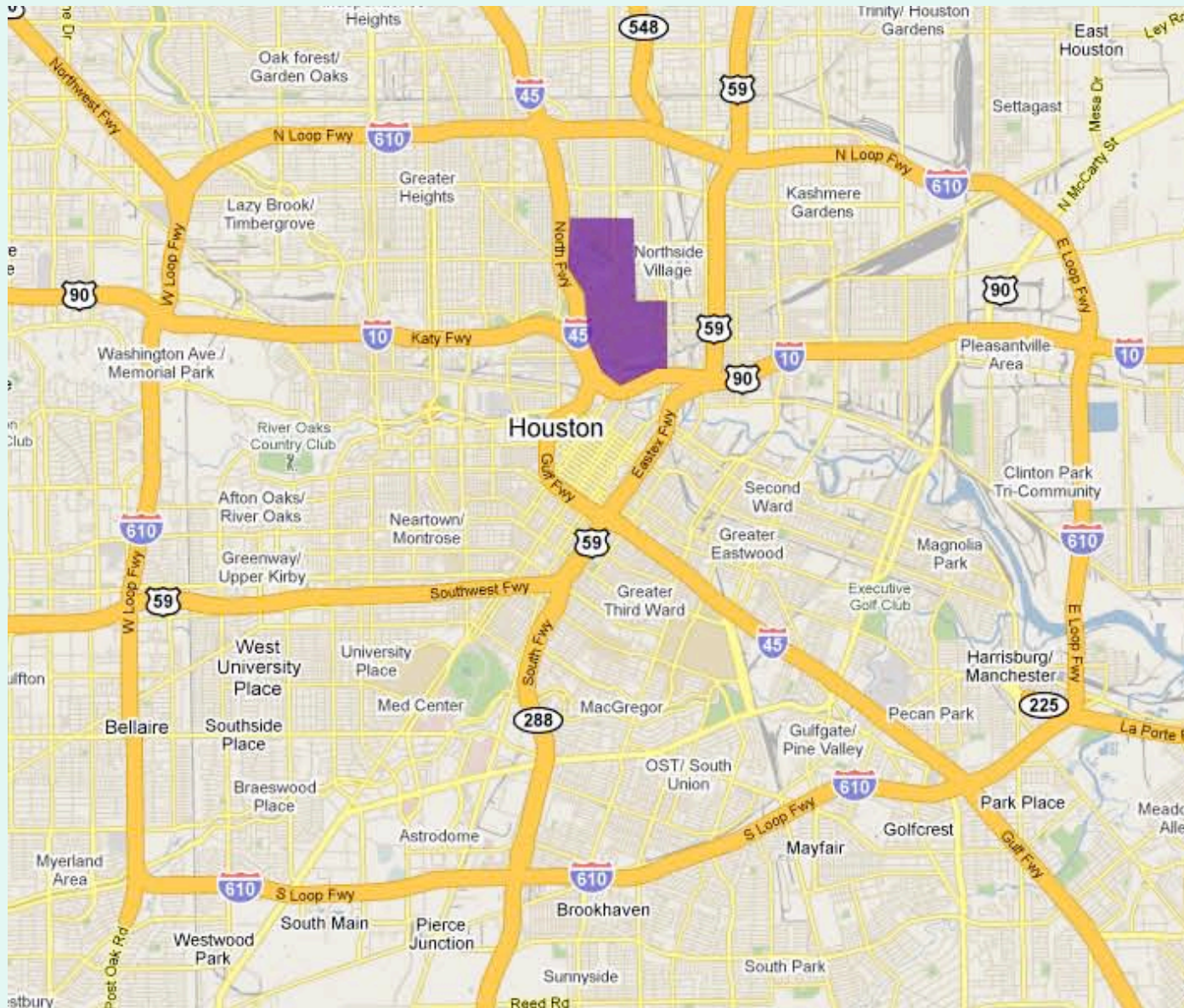
- Compact and Mixed-Use
- Designed to be Walkable
- Connected and Accessible



PROJECT OVERVIEW



LOCATION AND CONTEXT



NORTHSIDE | LIVABLE CENTERS STUDY

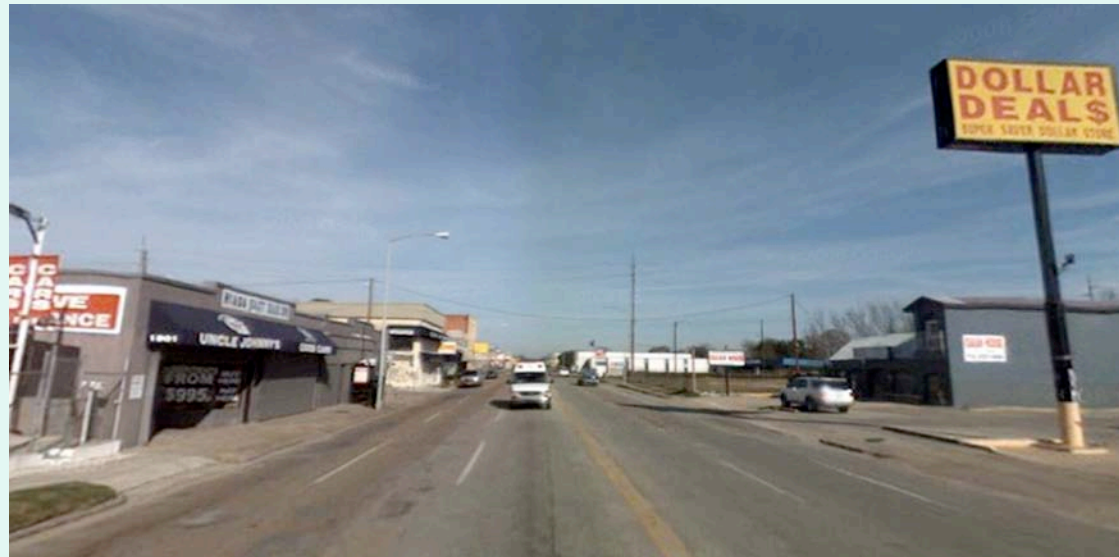
LOCATION AND CONTEXT



HISTORY OF RAIL IN NORTHSIDE



N Main and Hogan - Early 1900s



N Main and Hogan - Today

WHAT IS TRANSIT-ORIENTED DEVELOPMENT?

TOD can have significant benefits to individuals, communities, regions, states, the economy and the natural environment.

- MOBILITY CHOICES
- PUBLIC SAFETY
- BOLSTER HOUSEHOLDS' DISPOSABLE INCOME
- DECREASES INFRASTRUCTURE COSTS
- AFFORDABLE HOUSING

- REDUCES AIR POLLUTION
- TRANSIT RIDERSHIP

- CONSERVE RESOURCE LANDS AND OPEN SPACE
- ECONOMIC DEVELOPMENT



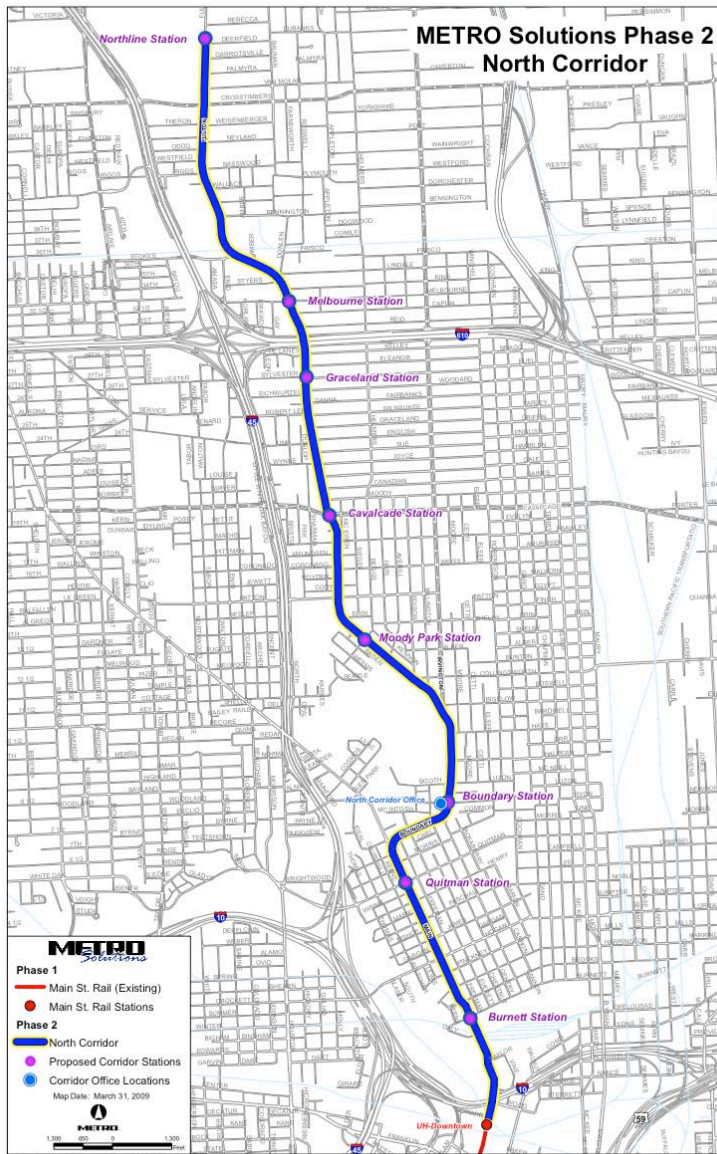
The background image shows a street scene with a large, multi-story building on the left, a tall palm tree in the center, and several cars parked along the street on the right. The scene is brightly lit, suggesting a sunny day.

ONGOING AND PREVIOUS STUDIES

NORTHSIDE | LIVABLE CENTERS STUDY

**VAN METER
WILLIAMS
POLLACK ^{LLP}**

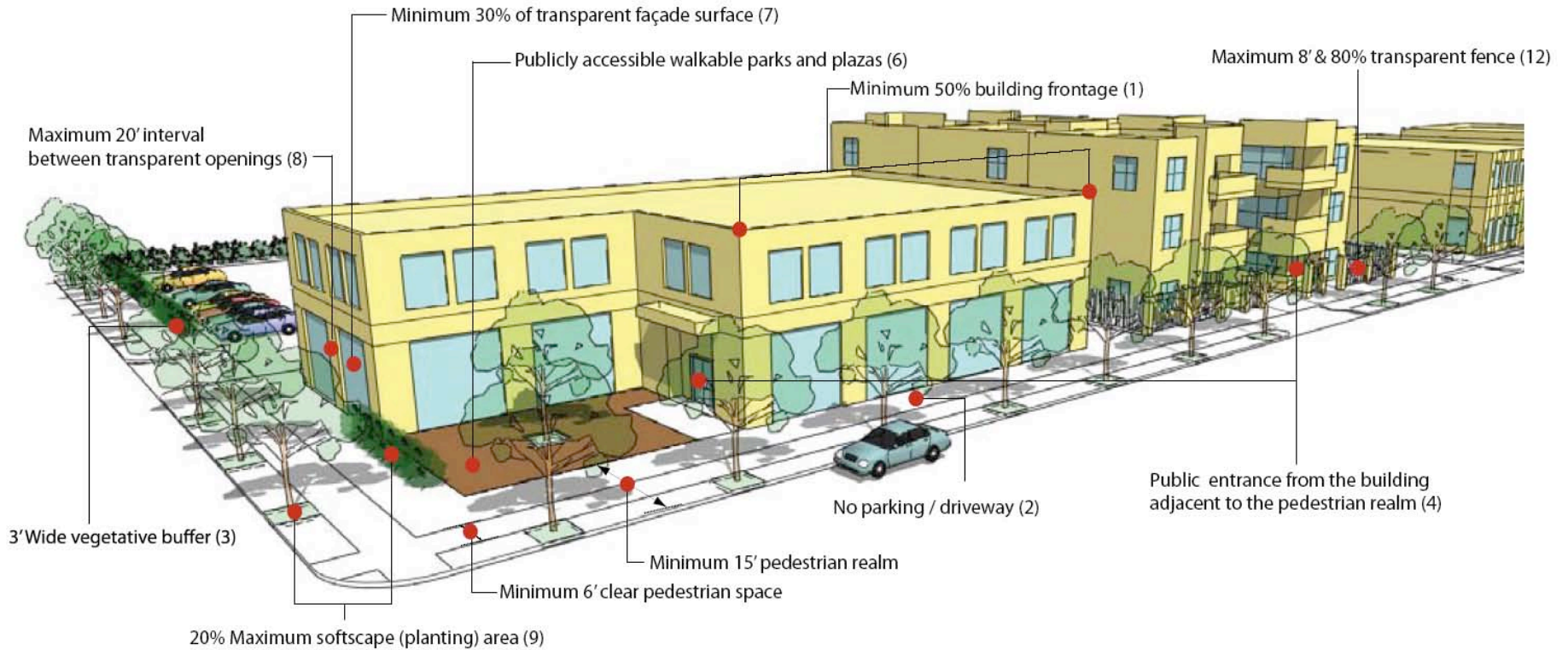
METRO SOLUTIONS TRANSIT PROJECT



- 5.2 Miles Long
- 8 Stations
- Estimated Completed by 2012



HOUSTON URBAN CORRIDORS PLANNING



NORTHSIDE VILLAGE ECONOMIC REVITALIZATION PLAN

Created in 2002, creates a “roadmap” to address the future and establish an identity for the neighborhood

- Urban Design Guidelines
- Major Economic Nodes and New Development Opportunities
- Strategies for Implementation



HARDY YARDS REDEVELOPMENT

Plan for vacant industrial land on southern portion of Northside

- High-density Urban Residential District
- Incorporation of Future Intermodal Station at Burnett and Main St



GO NEIGHBORHOODS

Shape the Future
of the Northside



Vision Day

January 23, 2010

1:00-4:00 p.m.

Jeff Davis High School

1101 Quitman St.

Light Rail · New Development · A Growing Population



PLAN PRINCIPLES

NORTHSIDE | LIVABLE CENTERS STUDY

REDEVELOP INDUSTRIAL AND COMMERCIAL PROPERTIES



N Main Street

NORTHSIDE | LIVABLE CENTERS STUDY

**VAN METER
WILLIAMS
POLLOCK**

REDEVELOP INDUSTRIAL AND COMMERCIAL PROPERTIES



NORTHSIDE | LIVABLE CENTERS STUDY

REDEVELOP INDUSTRIAL AND COMMERCIAL PROPERTIES



NORTHSIDE | LIVABLE CENTERS STUDY

REDEVELOP INDUSTRIAL AND COMMERCIAL PROPERTIES



Groceries and Shopping Options

DEVELOP MIXED-USE COMPLEXES AND MULTI-FAMILY HOUSING THAT INTEGRATES WITH TRANSIT



Boundary Street

NORTHSIDE | LIVABLE CENTERS STUDY

DEVELOP MIXED-USE COMPLEXES AND MULTI-FAMILY HOUSING THAT INTEGRATES WITH TRANSIT



NORTHSIDE | LIVABLE CENTERS STUDY

DEVELOP MIXED-USE COMPLEXES AND MULTI-FAMILY HOUSING THAT INTEGRATES WITH TRANSIT



NORTHSIDE | LIVABLE CENTERS STUDY

Commissioned by Joint Venture Silicon Valley

**VAN METER
WILLIAMS
POLLACK**

DEVELOP MIXED-USE COMPLEXES AND MULTI-FAMILY HOUSING THAT INTEGRATES WITH TRANSIT



NORTHSIDE | LIVABLE CENTERS STUDY

Commissioned by Joint Venture Silicon Valley

**VAN METER
WILLIAMS
POLLACK**

CREATE VIBRANT COMMUNITY GATHERING PLACES AND PARKS



Moody Park

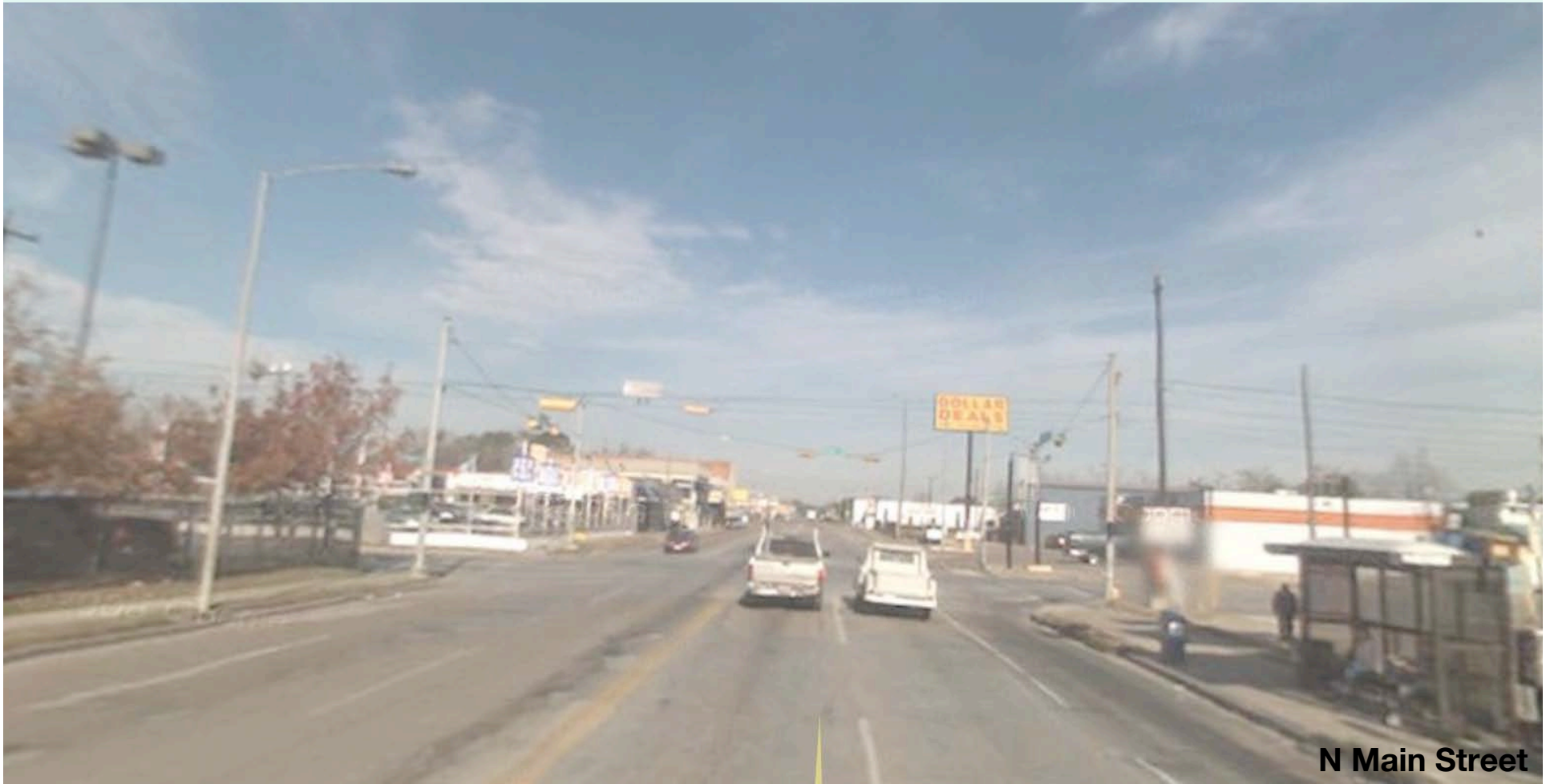
CREATE VIBRANT COMMUNITY GATHERING PLACES AND PARKS



CREATE VIBRANT COMMUNITY GATHERING PLACES AND PARKS



USE LIGHT RAIL TO IMPROVE OVERALL TRANSIT NETWORK AND TO ATTRACT ECONOMIC DEVELOPMENT



N Main Street

USE LIGHT RAIL TO IMPROVE OVERALL TRANSIT NETWORK AND TO ATTRACT ECONOMIC DEVELOPMENT



NORTHSIDE | LIVABLE CENTERS STUDY

USE LIGHT RAIL TO IMPROVE OVERALL TRANSIT NETWORK AND TO ATTRACT ECONOMIC DEVELOPMENT



NORTHSIDE | LIVABLE CENTERS STUDY

**VAN METER
WILLIAMS
POLLACK**

IMPROVE THE PEDESTRIAN NETWORK AND CREATE BIKEWAYS



Fulton Street

NORTHSIDE | LIVABLE CENTERS STUDY

IMPROVE THE PEDESTRIAN NETWORK AND CREATE BIKEWAYS



NORTHSIDE | LIVABLE CENTERS STUDY

IMPROVE THE PEDESTRIAN NETWORK AND CREATE BIKEWAYS



NORTHSIDE | **LIVABLE CENTERS STUDY**

Commissioned by Grating Jackson

**VAN METER
WILLIAMS
POLLOCK**

IMPROVE THE PEDESTRIAN NETWORK AND CREATE BIKEWAYS



Little White Oak Bayou

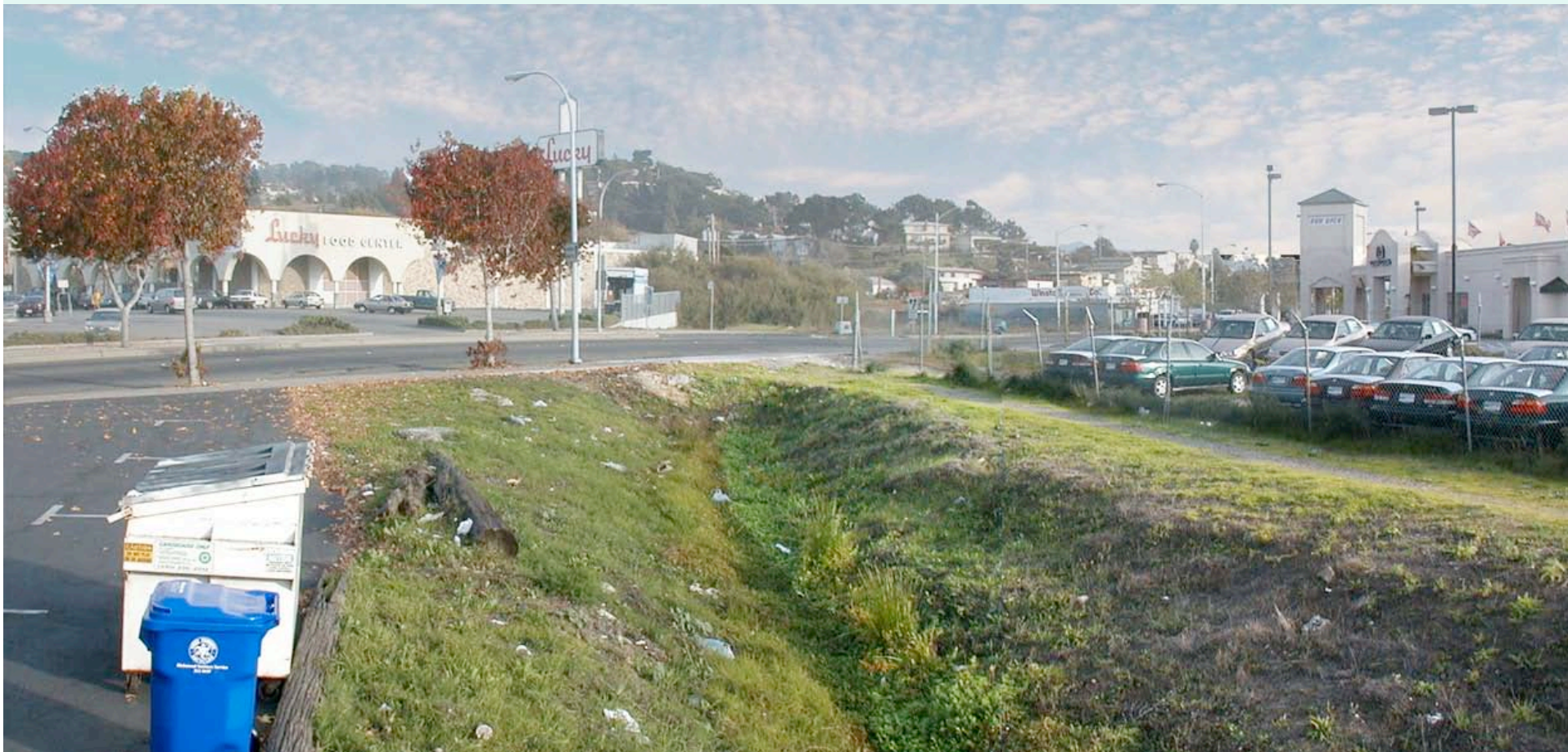
NORTHSIDE | LIVABLE CENTERS STUDY

IMPROVE THE PEDESTRIAN NETWORK AND CREATE BIKEWAYS



Hike and Bike Opportunities

IMPROVE THE PEDESTRIAN NETWORK AND CREATE BIKEWAYS



IMPROVE THE PEDESTRIAN NETWORK AND CREATE BIKEWAYS



NORTHSIDE | LIVABLE CENTERS STUDY

Commissioned by the Friends of Baxter

**VAN METER
WILLIAMS
POLLOCK**

IMPROVE THE VISUAL APPEARANCE OF COMMERCIAL CORRIDORS AND HISTORIC RESIDENTIAL AREAS



N Main Street



N Main Street

NORTHSIDE | LIVABLE CENTERS STUDY

IMPROVE THE VISUAL APPEARANCE OF COMMERCIAL CORRIDORS AND HISTORIC RESIDENTIAL AREAS



NORTHSIDE | LIVABLE CENTERS STUDY

IMPROVE THE VISUAL APPEARANCE OF COMMERCIAL CORRIDORS AND HISTORIC RESIDENTIAL AREAS



NORTHSIDE | LIVABLE CENTERS STUDY

For the San Antonio Community Development Corporation

**VAN METER
WILLIAMS
POLLACK**

IMPROVE THE VISUAL APPEARANCE OF COMMERCIAL CORRIDORS AND HISTORIC RESIDENTIAL AREAS



NORTHSIDE | LIVABLE CENTERS STUDY

For the San Antonio Community Development Corporation

**VAN METER
WILLIAMS
POLLACK**

IMPROVE THE VISUAL APPEARANCE OF COMMERCIAL CORRIDORS AND HISTORIC RESIDENTIAL AREAS



Fulton Street

NORTHSIDE | LIVABLE CENTERS STUDY

**VAN METER
WILLIAMS
POLLACK ^{LLP}**

IMPROVE THE VISUAL APPEARANCE OF COMMERCIAL CORRIDORS AND HISTORIC RESIDENTIAL AREAS



NORTHSIDE | LIVABLE CENTERS STUDY

IMPROVE THE VISUAL APPEARANCE OF COMMERCIAL CORRIDORS AND HISTORIC RESIDENTIAL AREAS



NORTHSIDE | LIVABLE CENTERS STUDY



***DRAFT ALTERNATIVE
OVERVIEW***

NORTHSIDE | LIVABLE CENTERS STUDY

**VAN METER
WILLIAMS
POLLACK ^{LLP}**

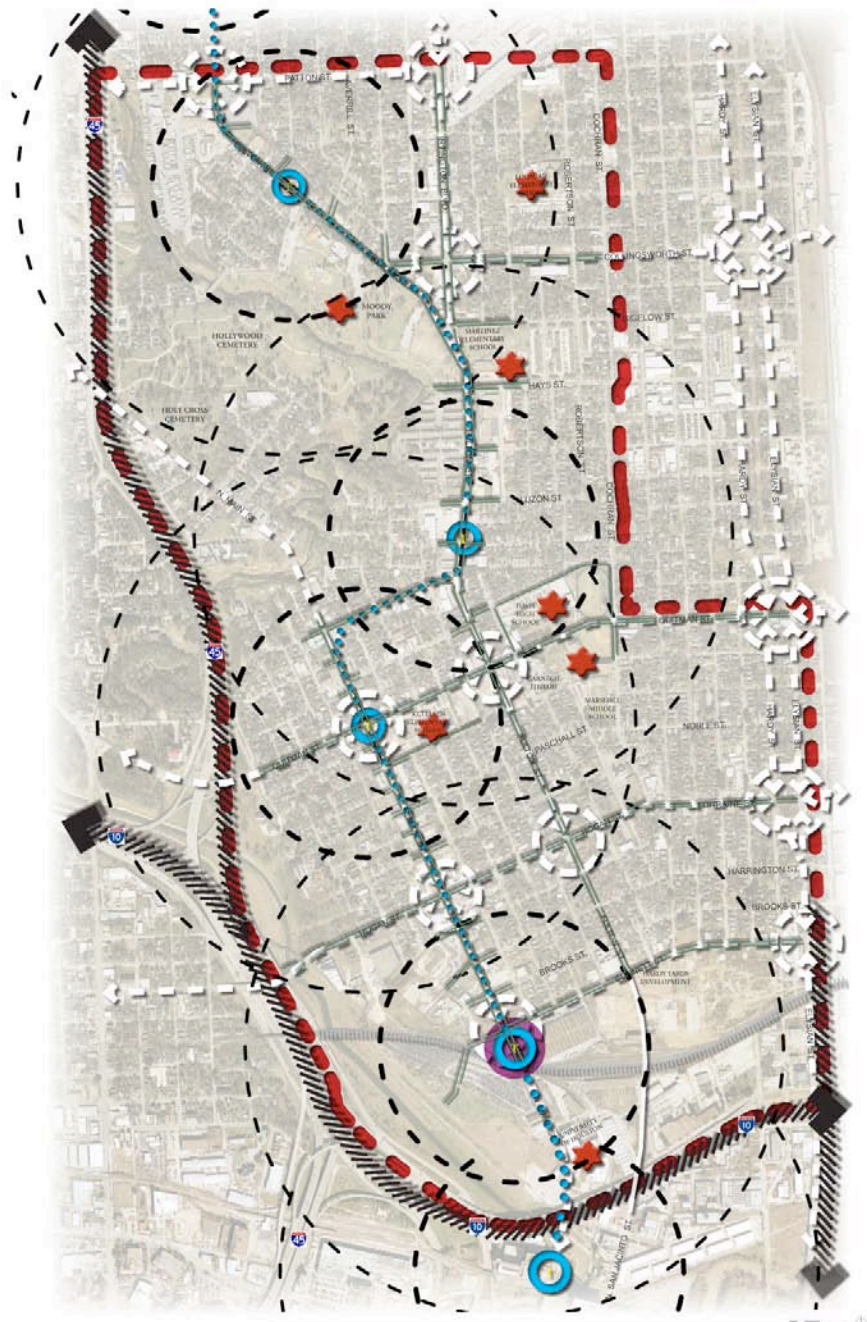
PLANNING AREA



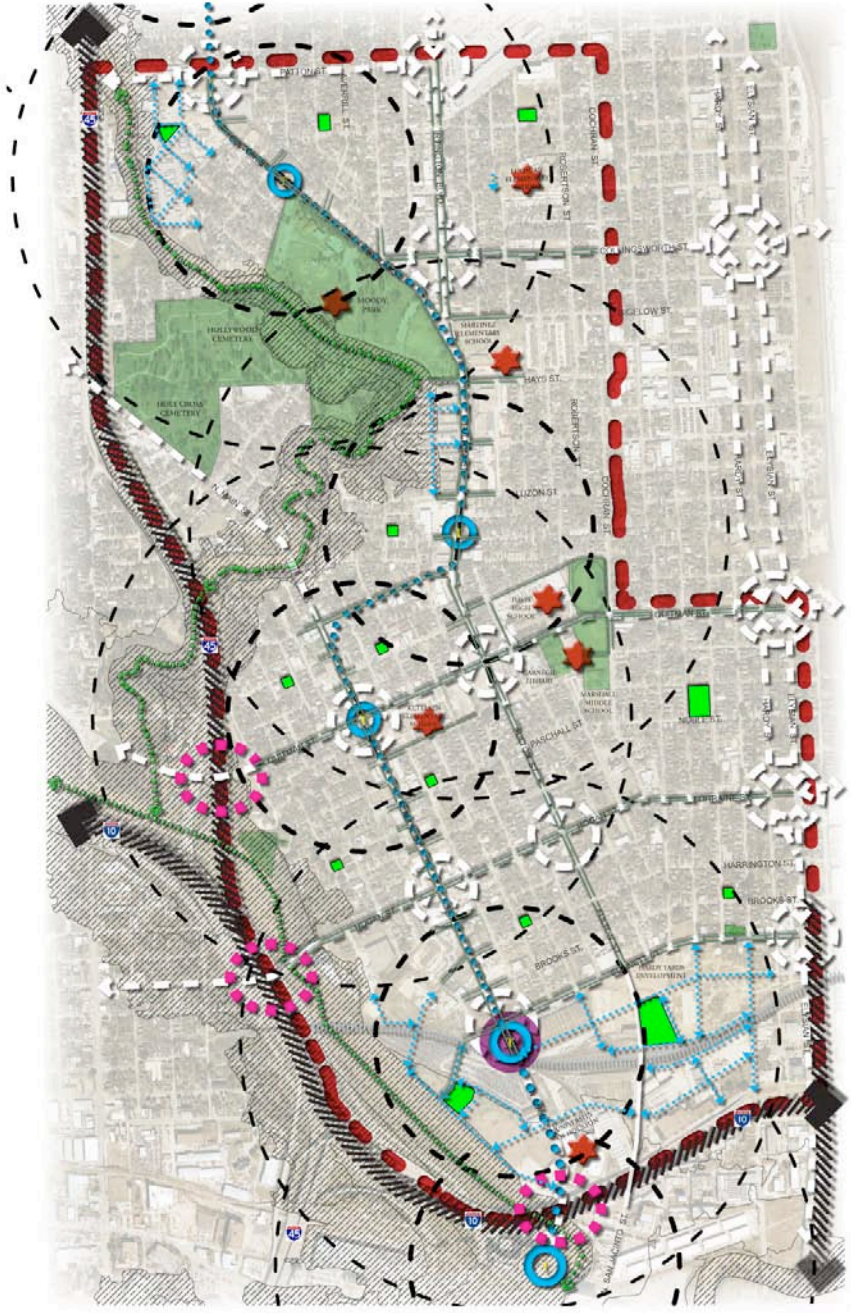
NEW TRANSIT STATIONS



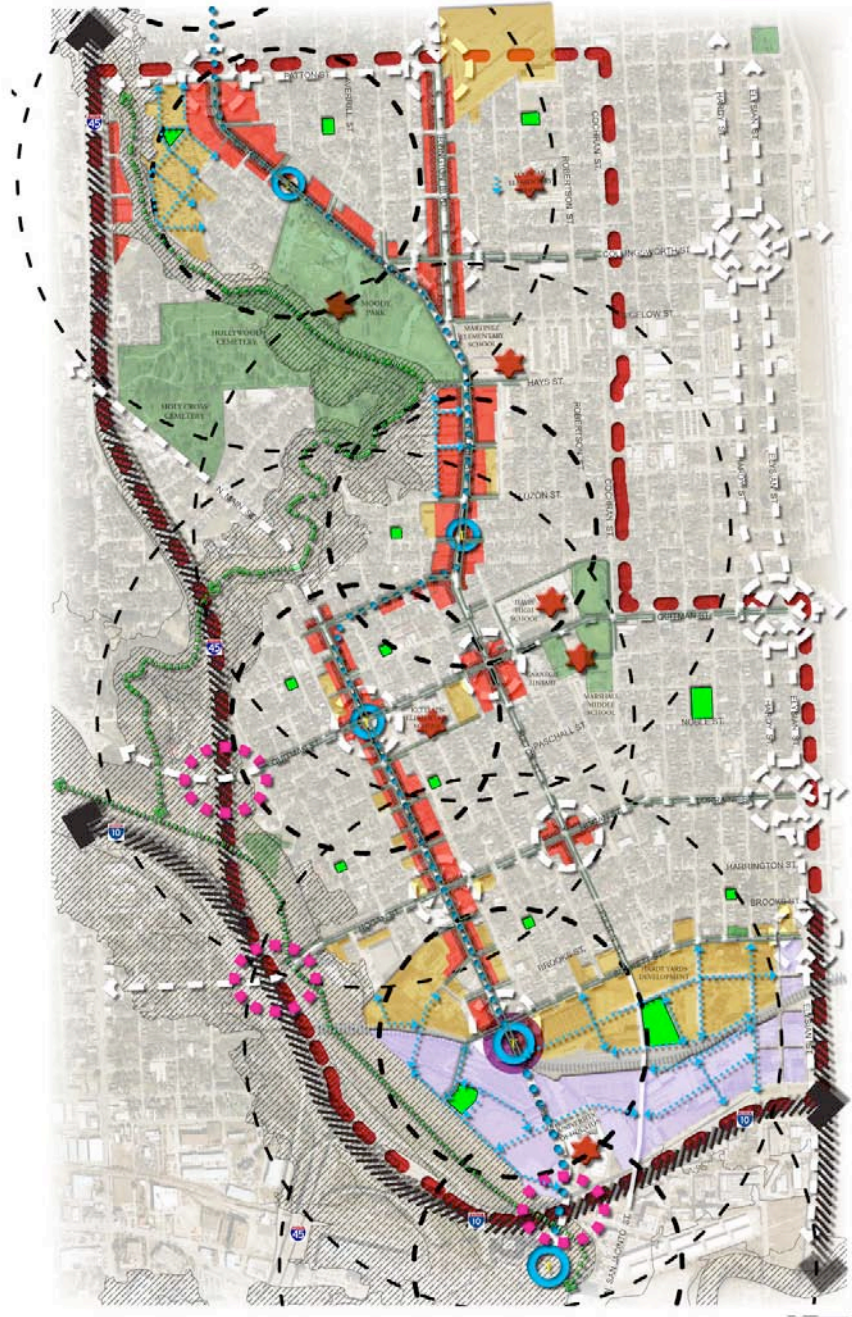
STREETS AND SIDEWALKS



PARKS AND OPEN SPACES

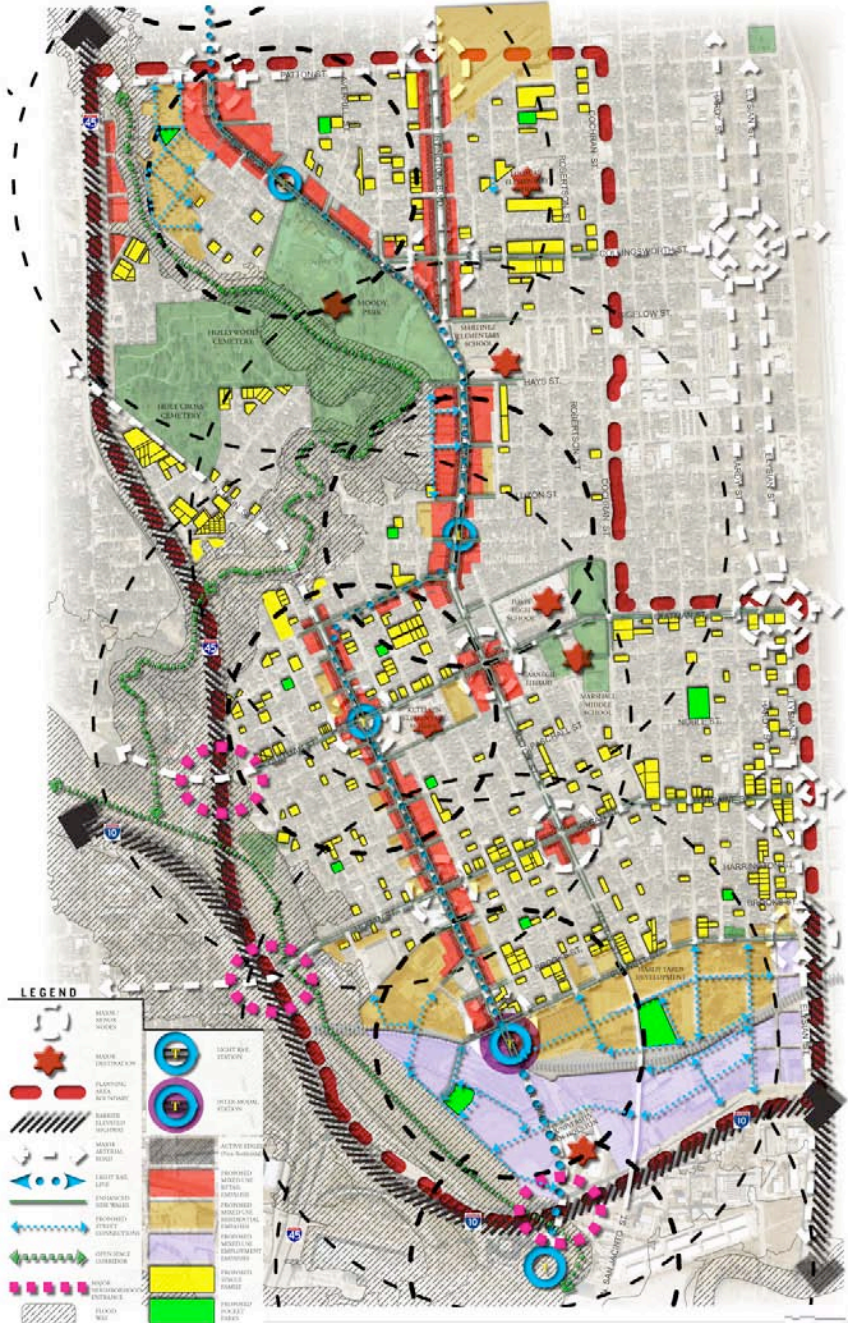


REDEVELOPMENT OPPORTUNITIES



NORTHSIDE | LIVABLE CENTERS STUDY

INFILL OPPORTUNITIES



NORTHSIDE | LIVABLE CENTERS STUDY

CREATING A LIVABLE CENTER



NORTHSIDE | LIVABLE CENTERS STUDY

CREATING A LIVABLE CENTER



NORTHSIDE | LIVABLE CENTERS STUDY

CREATING A LIVABLE CENTER



NORTHSIDE | LIVABLE CENTERS STUDY

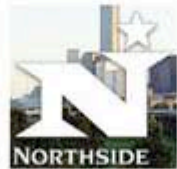
SMALL GROUP DISCUSSIONS



NORTHSIDE | LIVABLE CENTERS STUDY

NEXT STEPS

- Analysis of Feedback
- Creation of Refined Alternative
- Advisory Committee Meeting 2 - March
- Community Workshop 2 - June



Need more info? Visit: <http://www.h-gac.com/livablecenters>

Contact: Adam Rosa (Van Meter Williams Pollack)
(303) 298-1480 x 17 adam@vmwp.com
Meredith Dang (H-GAC)
(713) 993-2443 meredith.dang@h-gac.com

Necesita mas informacion? Visite:

<http://www.h-gac.com/livablecenters>

Comuníquese: Adam Rosa (Van Meter Williams Pollack)
(303) 298-1480 x 17 adam@vmwp.com
Para Español: Diana Ponce De León (Ciudad de Houston)
(713) 837-7892