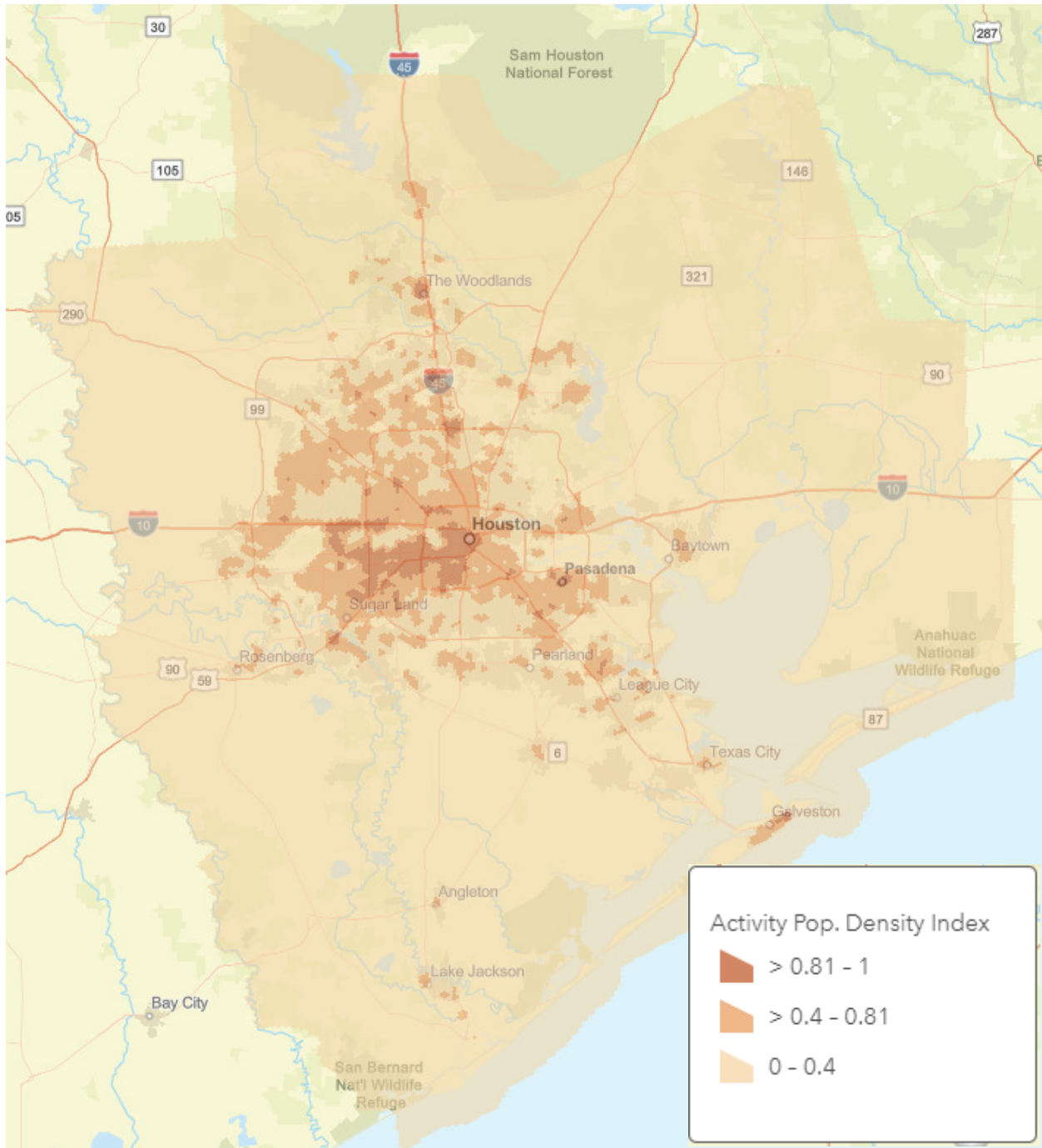


Call for Projects - Urban/Suburban/Rural Areas MAP



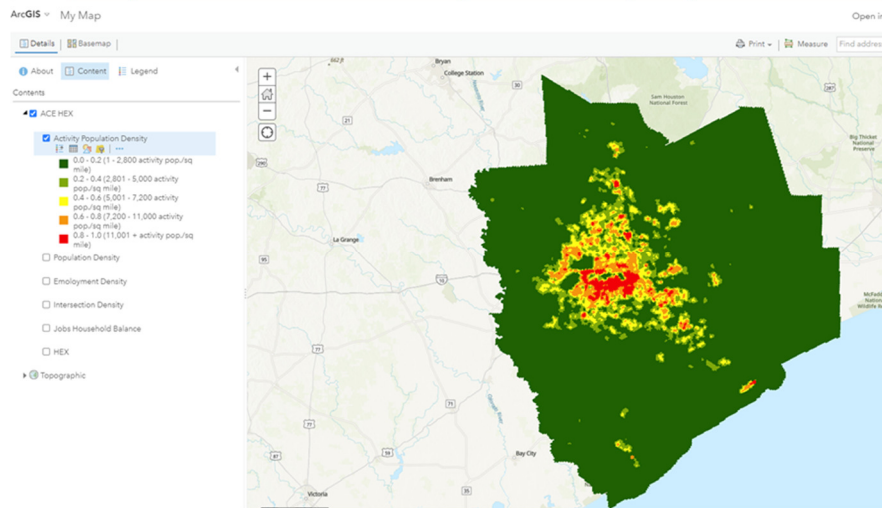
Activity Population Density Index


- Rural area – 0 - 0.4
- Suburban area – 0.41- 0.8
- Urban area – 0.81-1.0

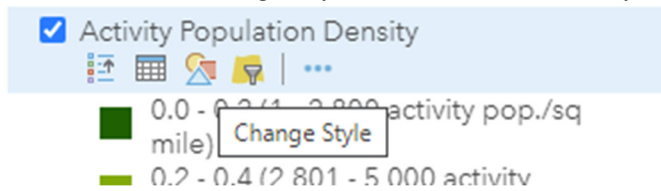
Instructions to make Urban/Suburban/Rural Areas MAP using 1/7 square mile hexagons for Activity-Connectivity Explorer tool.

https://www.arcgis.com/home/webmap/viewer.html?url=https%3A%2F%2Fgis.h-gac.com%2Farcgis%2Frest%2Fservices%2FSocioeconomic_Modeling%2FACE_HEX%2FMapServer&source=sd

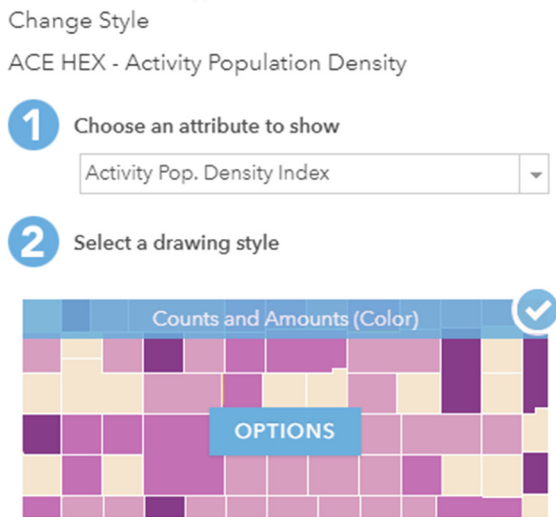
1. Open the link above and expand ‘Activity Population Density’



2. Click ‘Change Style’  below ‘Activity Population Density’



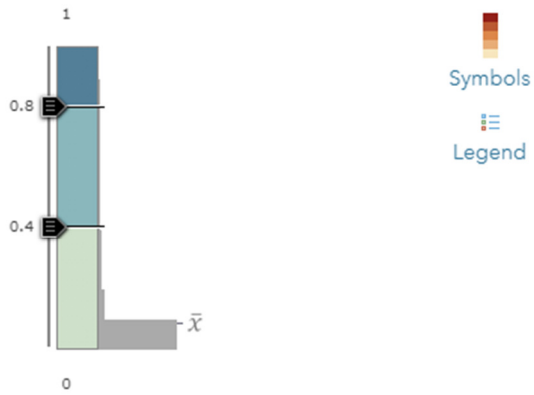
3. Click ‘Options’



4. Change 'With' to 3 and move needles to meet 0.4 and 0.8

Activity Pop. Density Index

Divided By:



Classify Data

Using

With classes

Round classes:

5. Click 'Symbols' to change colors