



Water Quality Management Plans for Agriculture in the San Bernard River Watershed

Brian Koch

Texas State Soil and Water Conservation Board

San Bernard River Watershed Protection Plan Stakeholder
Meeting

May 20, 2010

Wharton, Texas



Role of Texas State Soil and Water Conservation Board

Water Quality Mandate (Texas Agriculture Code §201.026)

TSSWCB is the lead agency in Texas responsible for planning, implementing and managing programs and practices for preventing and abating agricultural and silvicultural nonpoint source water pollution



How is this done?

- TSSWCB works with the 216 Soil and Water Conservation Districts (SWCDs) across Texas, by using local knowledge to achieve conservation goals that are based on the needs of each specific SWCD
- The TSSWCB works to restore and protect water quality on agricultural and silvicultural land by providing **technical** and/or **financial** assistance to SWCDs
- This is accomplished by implementation of best management practices through the TSSWCB Water Quality Management Plan Program



Water Quality Management Plans

What is a Water Quality Management Plan?

- A water quality management plan (WQMP) is a site-specific plan developed through and approved by soil and water conservation districts for agricultural or silvicultural lands. The plan includes appropriate land treatment practices, production practices, management measures, technologies or combinations thereof. The purpose of WQMPs is to achieve a level of pollution prevention or abatement determined by the TSSWCB, in consultation with local soil and water conservation districts, to be consistent with state water quality standards.



WQMPs

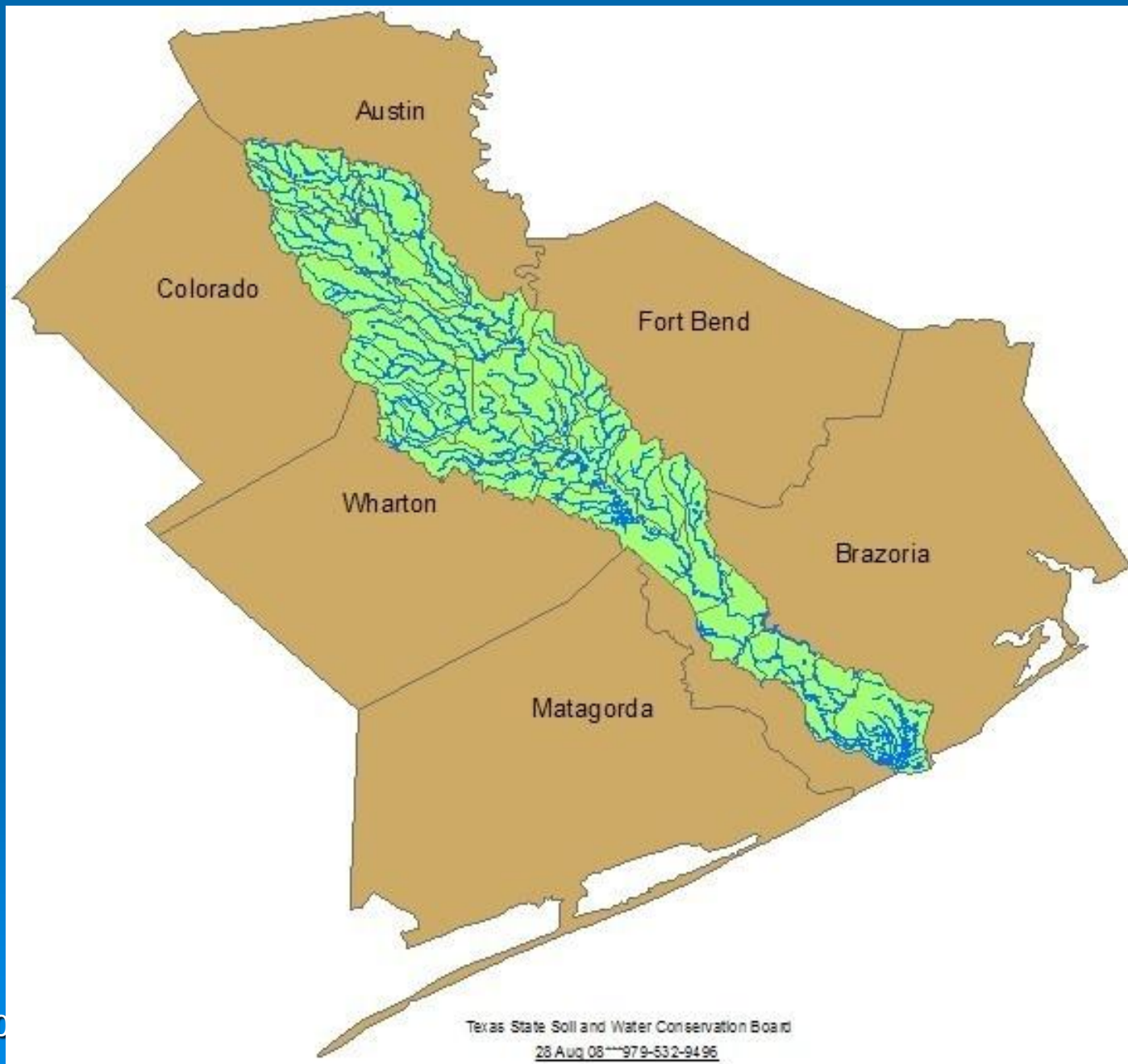
- A WQMP covers the entire operating unit, and includes required practices applicable to the planned land use. Conservation cropping sequence and residue management should be considered for cropland. Proper grazing use is a vital consideration for a good WQMP on rangeland and pastureland. Various grazing systems will be examined and a sustainable system will be implemented. A WQMP on rangeland and pastureland will have water facility considerations. Forested land and wildlife are not to be excluded from the WQMP operating unit.



WQMPs in the San Bernard River Watershed

- 152 total plans with 64,383 acres implemented
- Prescribed Grazing 31,698 acres (Pasture and Grazed Rangeland)
- Nutrient Management 46,444 acres (Pasture, Hay, and Crop)
- Hayland 2846 acres
- Wildlife land (Buffers) 9546 acres
- Crop Rotation 29,304 acres

San Bernard River Watershed



May 20, 2010

Texas State Soil and Water Conservation Board

28 Aug 08 979-532-9496



WQMPs

How To Obtain A WQMP

- The first step in obtaining a WQMP is to contact your local Soil and Water Conservation District. NRCS or SWCD staff at the local office can take your request for a WQMP, obtain necessary information from you, and start the plan development process.

How Much Does A WQMP cost?

- There is no charge for development of a WQMP. However, there may be costs for implementing certain practices required in your WQMP, for which there may be financial assistance available.



WQMPs

What Does A Plan Contain?

- A District-Cooperator Agreement
- Written Request for planning assistance
- Soil Map of the area with appropriate interpretations
- Conservation Plan Map
- Narrative Record of decisions (including all practices needed for a WQMP)
- Implementation schedule indicating the year practices are to be applied
- Worksheets used during the inventory and/or planning phase of WQMP
- Signature sheet to verify individual's privacy



WQMPs

5 Step WQMP Participation Process

- An individual requests planning assistance through the local Soil and Water Conservation District.
- The plan is developed with NRCS and TSSWCB assistance.
- The WQMP is certified.
- The individual implements the WQMP on his/her land.
- The WQMP is subject to annual status reviews.



Resources for WQMPs

Local:

Austin County SWCD Bellville, Texas
Coastal Plains SWCD Rosenberg, Texas
Colorado County SWCD Columbus, Texas
Waters Davis SWCD Angleton, Texas
Wharton County SWCD Wharton, Texas

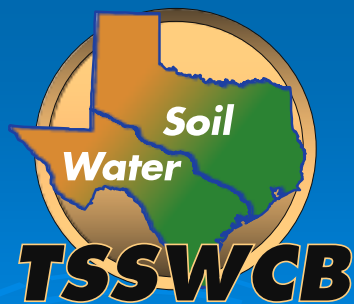
TSSWCB-Wharton Regional Office
1120 Hodges Lane
Wharton, TX 77488
979-532-9496

On the Web:

<http://www.tsswcb.state.tx.us/wqmp>

Thanks!

Any Questions?



Brian Koch
Regional Watershed Coordinator

Texas State Soil and Water Conservation Board

Wharton Regional Office
1120 Hodges Ln
Wharton, TX 77488

979-532-9496 v
979-532-8765 f

bkoch@tsswcb.state.tx.us
<http://www.tsswcb.state.tx.us/>
<http://www.tsswcb.state.tx.us/cwp>

*Authorization for use or reproduction of any original material
contained in this presentation is freely granted.
TSSWCB would appreciate acknowledgement.*