

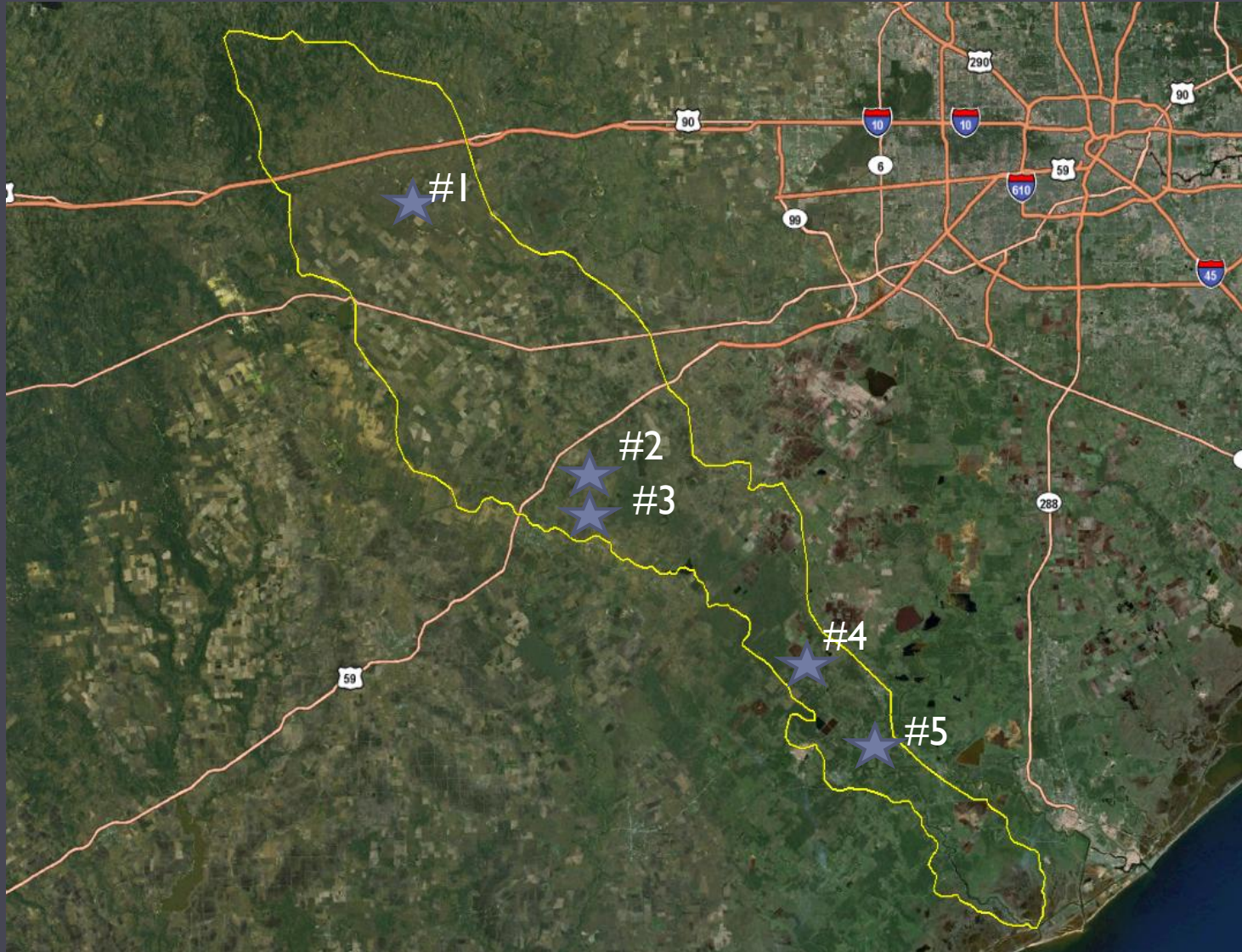


San Bernard River Ambient Monitoring

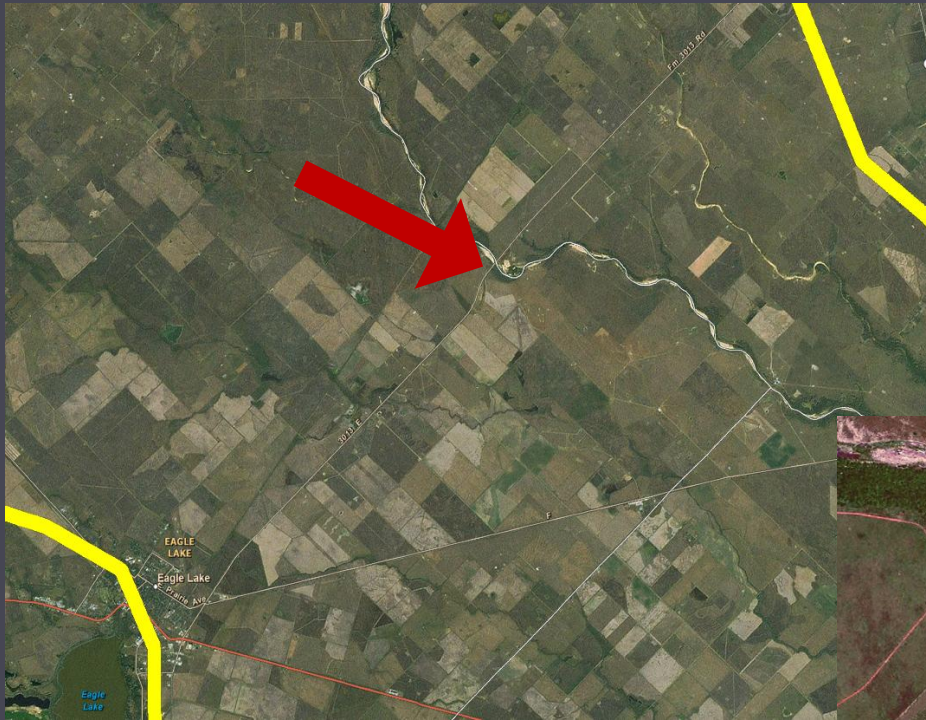


Houston-Galveston Area Council

Overview of Monitoring Sites



Site #1 FM 3013 at the border of Austin and Colorado Counties – monitored since 2007





Upstream of 3013

Downstream
from FM 3013





Water was up much higher than usual



Site #2 West Bernard Creek at CR 225 in Wharton County- site added in 2009





This site had a lot of dumped items and trash including household appliances



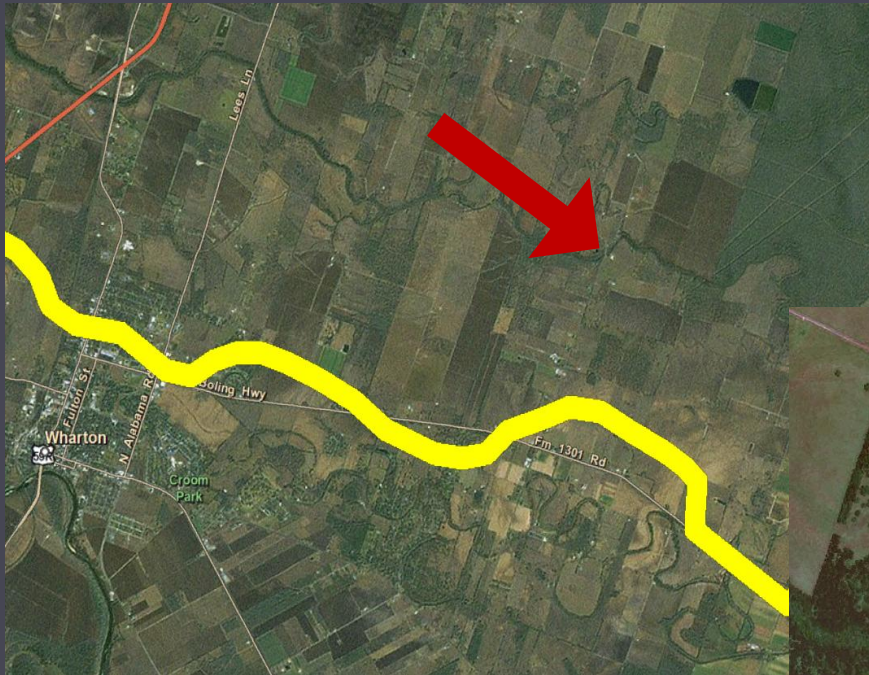


Upstream of CR 225

Downstream of CR 225



Site #3 Peach Creek at CR 117 in Wharton County – site added in 2009





Upstream of CR 117





Site had evidence that water levels had been up



Site had tracks from coyote, grey fox and raccoon



Site #4 Mound Creek at CR 450 in Brazoria County – site added in 2009





Downstream of CR 450





Upstream of CR 450



Site #5 San Bernard Tidal at SH 35 in Brazoria County – monitored since 2007





The tide was flowing in (upstream)
while we were there

Site is adjacent to a turf farm





Public access ramp

