



Re-Energizing Public Right-of-Ways:

Activating Alleyways

Presented By:

Kelly Violette, CEcD, AICP, PCED

Executive Director

Tomball Economic Development Corporation



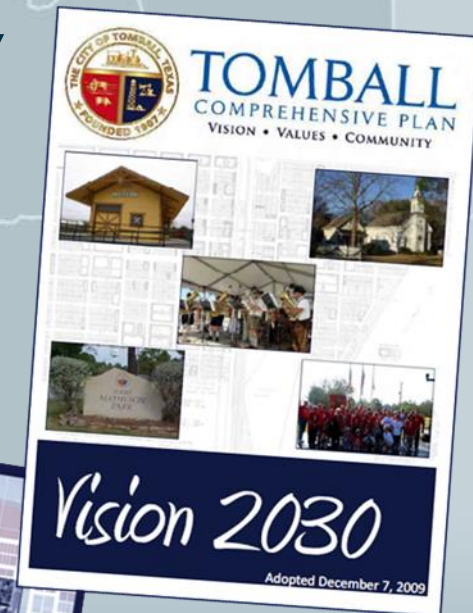
Placemaking





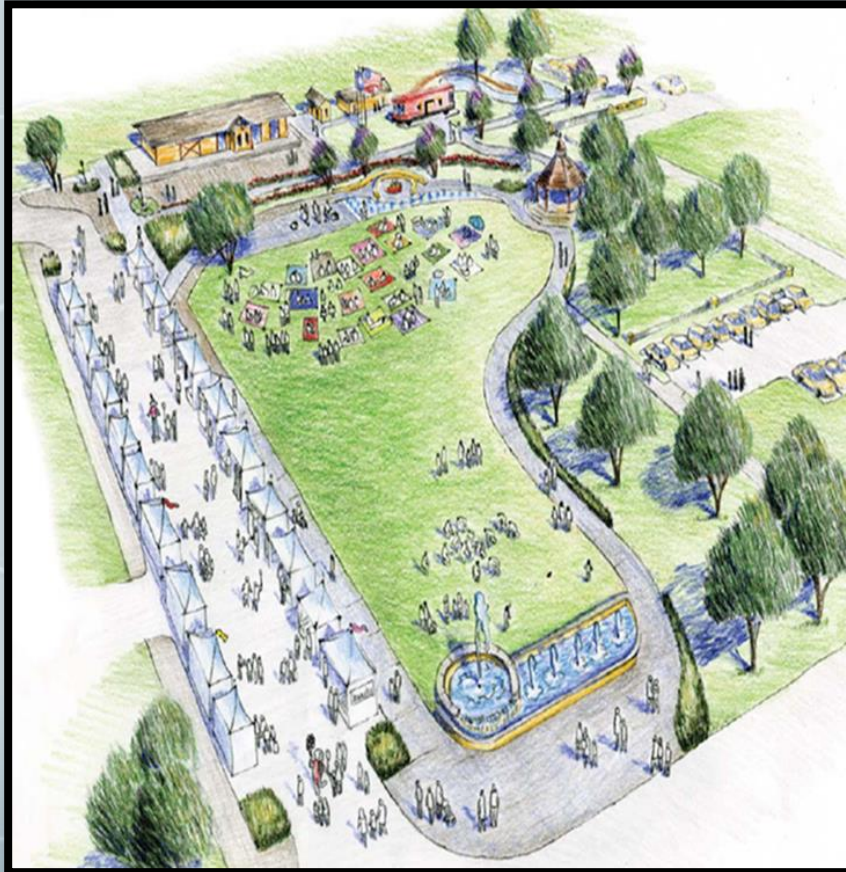
Planning for the Future

- Zoning Ordinance
- FM 2920 Access Management Study
- Livable Centers Downtown Plan
- Tomball Comprehensive Plan





Livable Centers Downtown Plan





Goals

- Activate the pedestrian realm
- Provide public parking
- Enhance the Depot Plaza



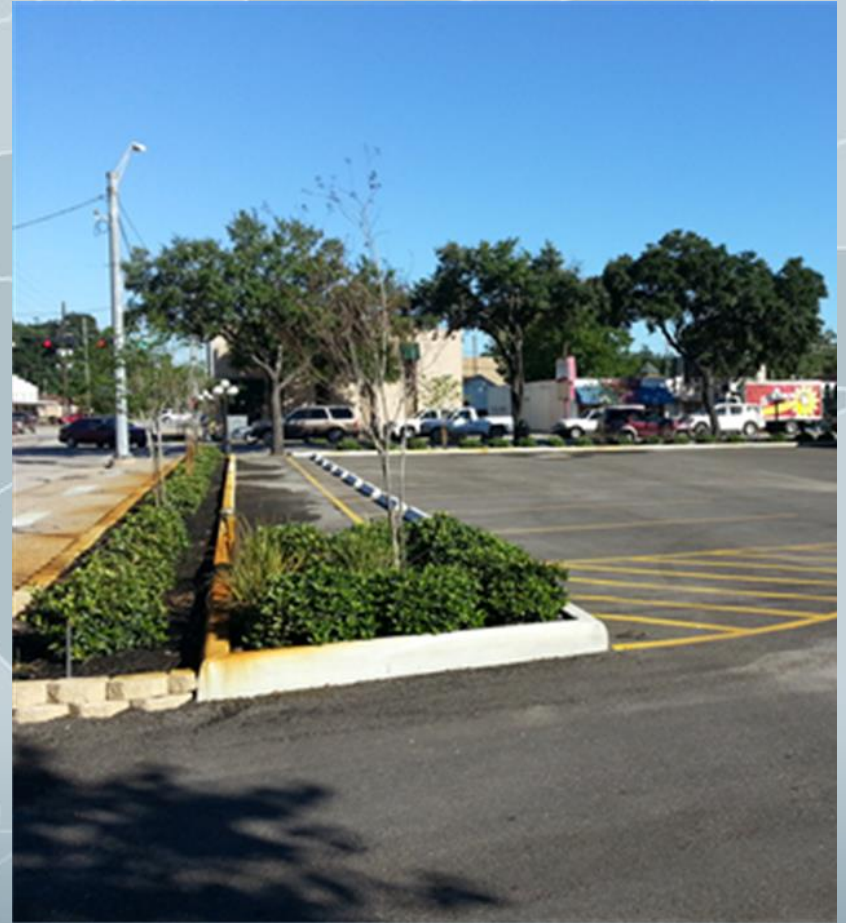
Challenges/Opportunities



- Bisected by major thoroughfare
- Unsafe parking conditions
- No cohesive sidewalk/pathway network
- Narrow/limited right-of-way

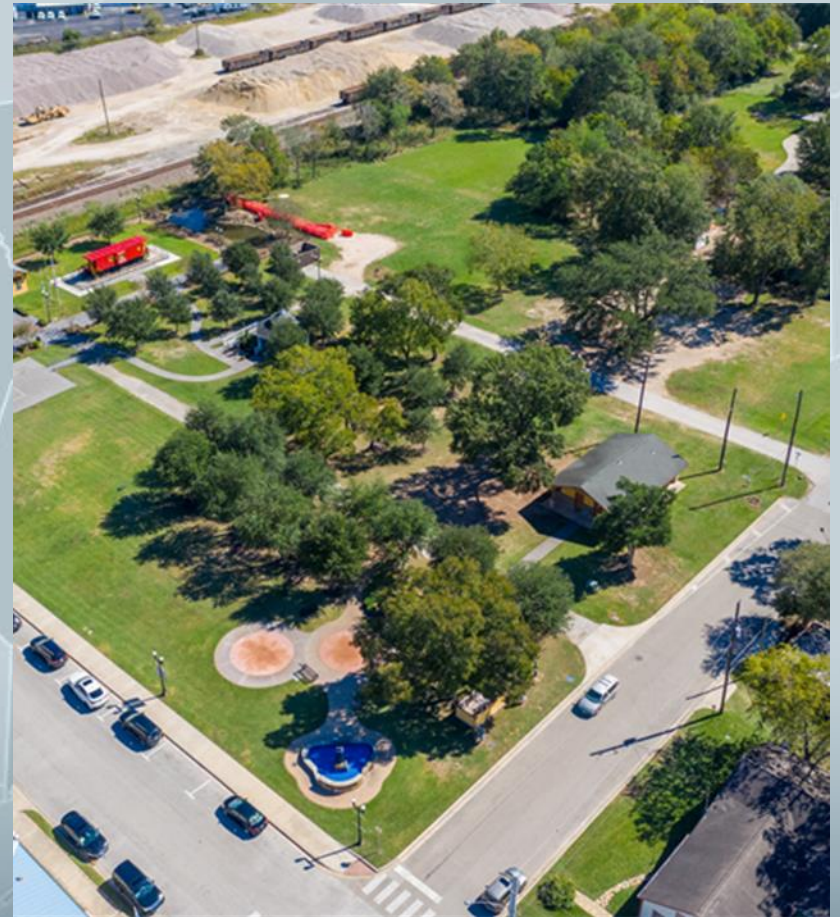
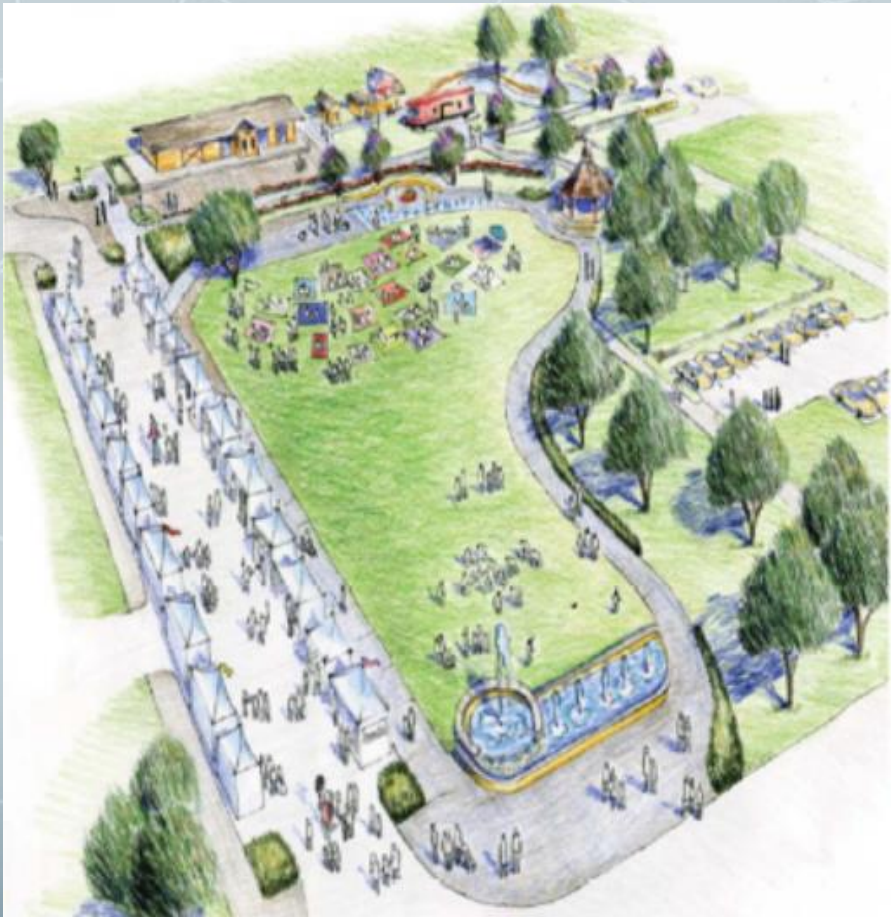


Progress





Downtown Today



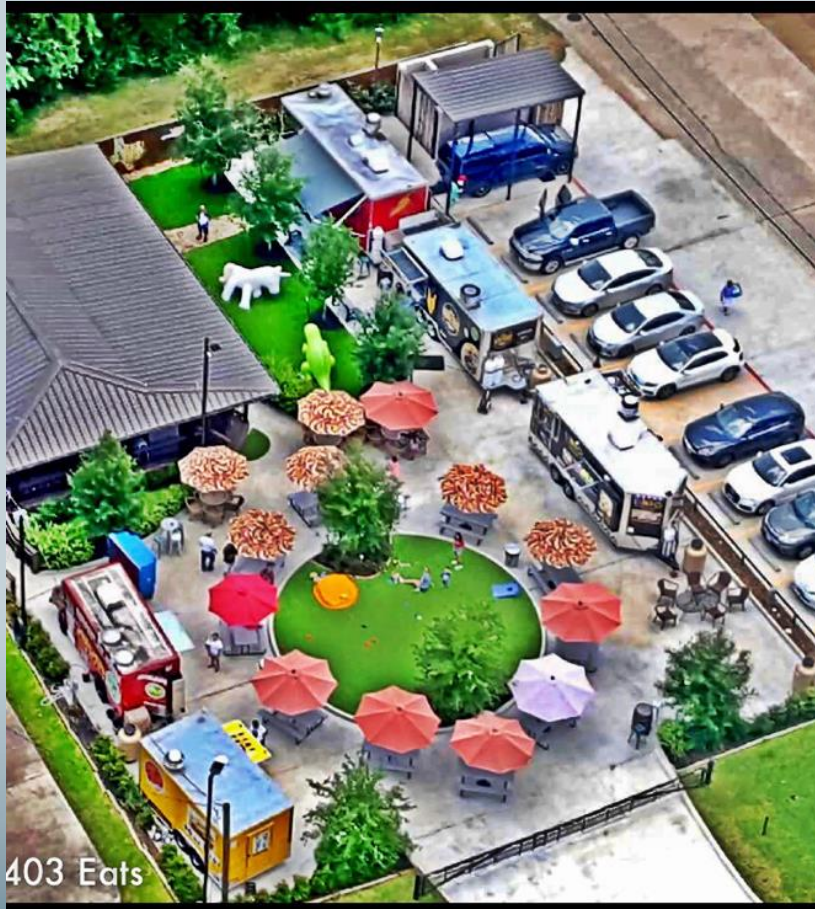


Depot Plaza





Public Investments Have Resulted In.....





Private Investment





New Businesses





Redevelopment





Farmer's Market





Public Art

- Murals
- Art Banners
- Statutes

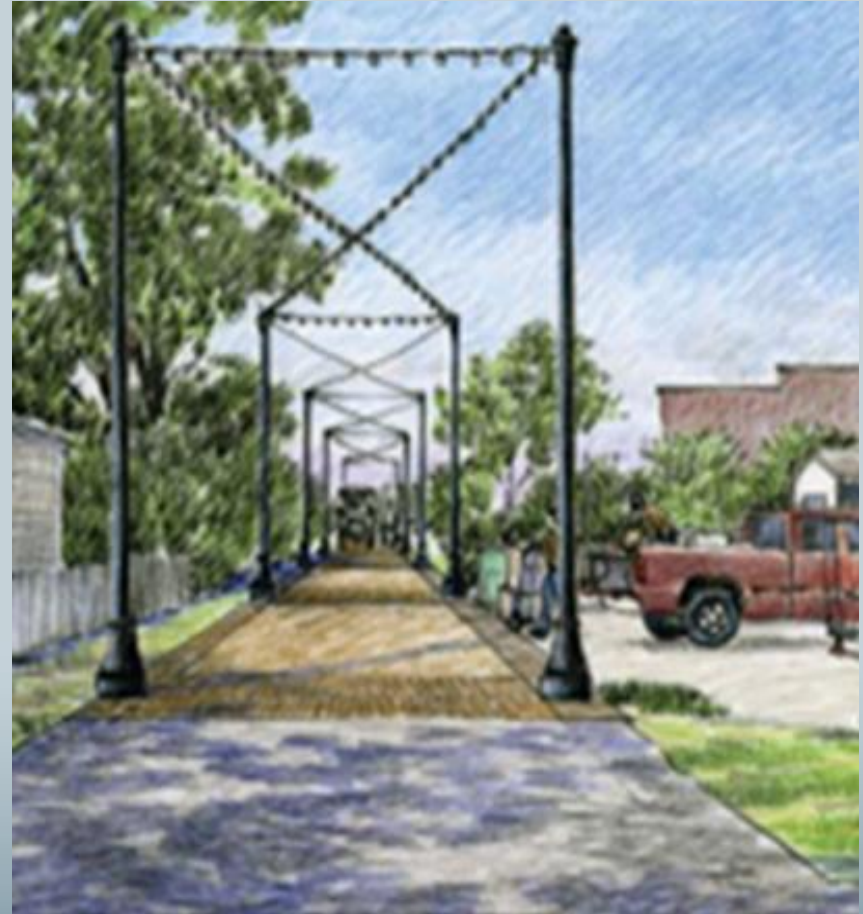


Public Art





Activating Alleyways





Alleyway Transformation Goals

- Bring life to the space
- Connect alleys to streets
- Ignite economic growth and development
- Connectivity for pedestrians
- Safety
- Maintain service access
- Consolidate refuse



Downtown Alley Enhancements-Phase 1





Main Street/Market Street/Walnut Street/Elm Street



Shared
Dumpster







Existing Conditions







Commerce Street/Main Street/Walnut Street/Elm Street







Existing Conditions





Commerce Street/Main Street/Cherry Street/Walnut Street







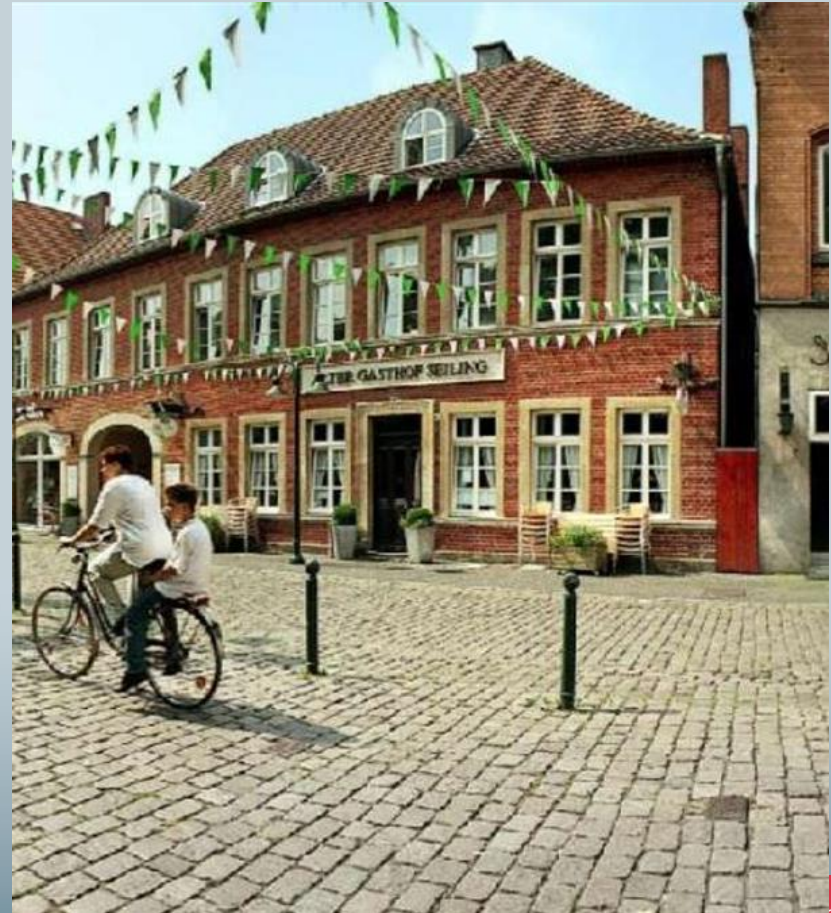


Inspiration





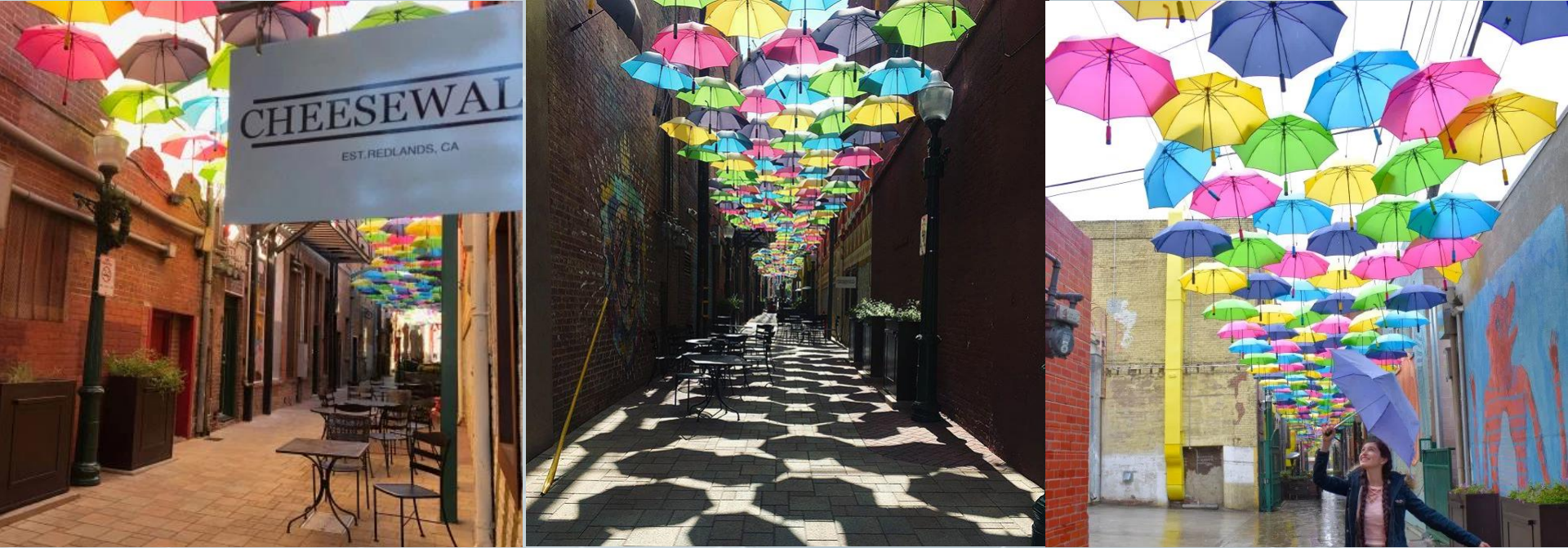
Telgte, Germany



Inspiration



Fort Collins, CO



Orange Street Alley: Redlands, CA



Brenham, TX



Art/Themes/Names



Status



- Design is 90% complete
- Estimated costs
 - Elm to Walnut (north and south alleys)-\$588K
 - Walnut to Cherry (north alley only)-\$260K
 - Entire project (w/cont.)-\$880K



Next Steps

- Engage community stakeholders
- Target opportunities for demonstration projects
- Timing of construction



A light blue map of the Houston-Galveston Area Council region, showing county boundaries. The map is centered on the Gulf of Mexico coast.

Thank you!