

San Jacinto River Waste Pits Superfund Site

Community Awareness Committee Meeting
4/4/2012

K:\Jobs\090557-San Jacinto\090557-01 - San Jacinto\090557-01 - San Jacinto\090557-01\09055701-OMMP-001.dwg FIG 1-1 OMMP
Feb 21, 2012 1:40pm dho/mmr

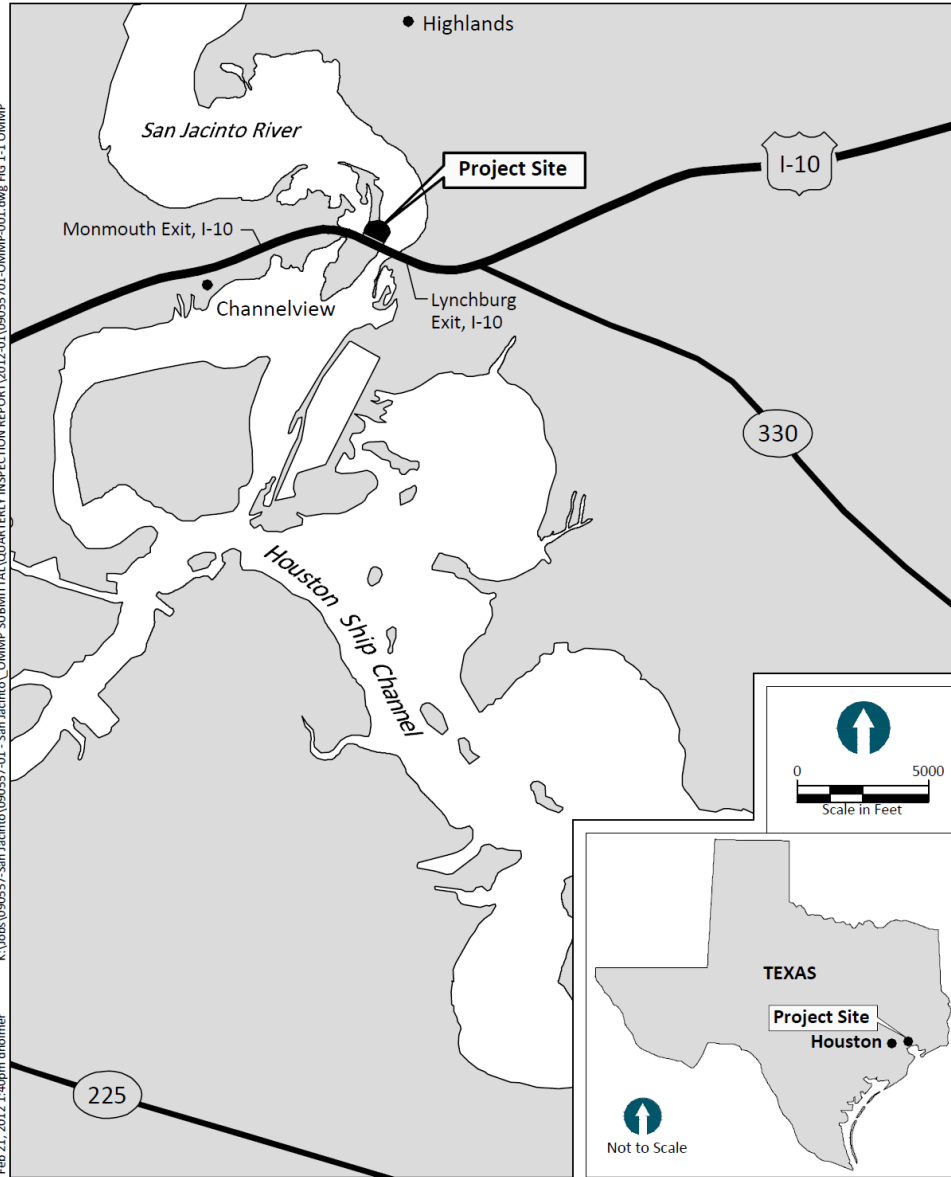


Figure 1

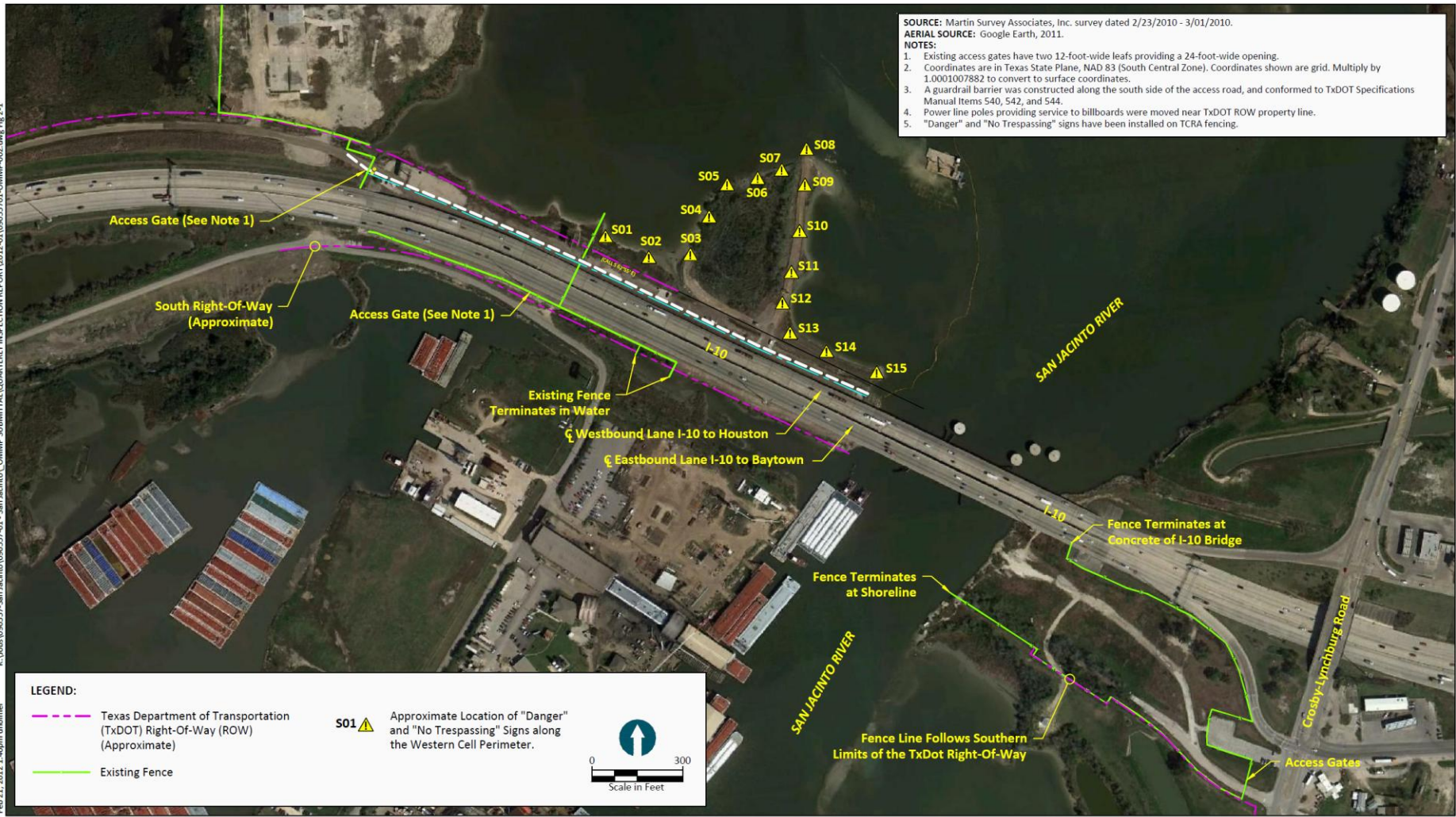
Vicinity Map

Post TCRA Quarterly Inspection (January 2012)

San Jacinto River Waste Pits Superfund Site



Feb 21, 2012 1:40pm dholmer K:\Jobs\090557-San Jacinto\090557-01 - San Jacinto\ONMMP SUBMITTAL\QUARTERLY INSPECTION REPORT\2012-01\09055701-ONMMP-000.dwg Fig 2-1



SOURCE: Martin Survey Associates, Inc. survey dated 2/23/2010 - 3/01/2010.
 AERIAL SOURCE: Google Earth, 2011.
 NOTES:
 1. Existing access gates have two 12-foot-wide leaves providing a 24-foot-wide opening.
 2. Coordinates are in Texas State Plane, NAD 83 (South Central Zone). Coordinates shown are grid. Multiply by 1.0001007882 to convert to surface coordinates.
 3. A guardrail barrier was constructed along the south side of the access road, and conformed to TxDOT Specifications Manual Items 540, 542, and 544.
 4. Power line poles providing service to billboards were moved near TxDOT ROW property line.
 5. "Danger" and "No Trespassing" signs have been installed on TCRA fencing.

LEGEND:

- Texas Department of Transportation (TxDOT) Right-Of-Way (ROW) (Approximate)
- Existing Fence
- ▲ S01 Approximate Location of "Danger" and "No Trespassing" Signs along the Western Cell Perimeter.



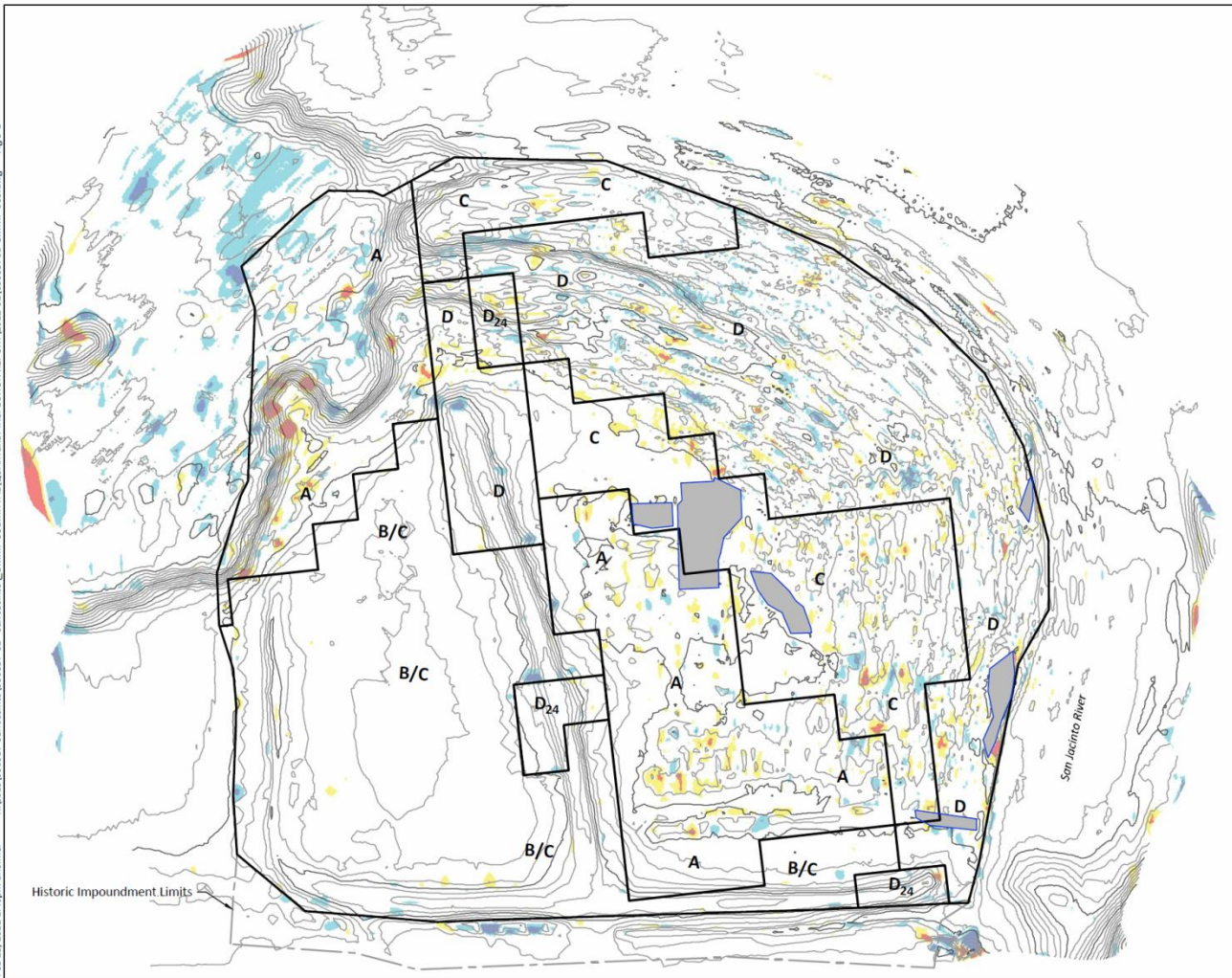


 Scale in Feet



Figure 2
 Fence and Warning Sign Layout
 Post TCRA Quarterly Inspection (January 2012)
 San Jacinto River Waste Pits Superfund Site



LEGEND:

- Existing Contour (1 Foot Interval)
- Armored Cap Type and Boundary
- Historic Impoundment Limits
- > 1.0 Foot Increase
- 0.5 Foot Increase to 1.0 Foot Increase
- 0.5 Foot Increase to 0.5 Foot Decrease
- 0.5 Foot Decrease to 1.0 Foot Decrease
- > 1.0 Foot Decrease
- Visual Survey Only
- Example 30'x30' Area

SOURCE: Drawing prepared from surveys provided by Hydrographic Consultants dated August 2011 and January 2012.
 HORIZONTAL DATUM: Texas State Plane South Central, NAD83, U.S. Feet.
 VERTICAL DATUM: NAVD 88.

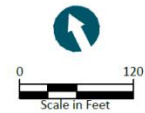


Figure 3
 January 2012 Quarterly Inspection Survey
 Post TCRA Quarterly Inspection (January 2012)
 San Jacinto River Waste Pits Superfund Site

Western Cell - January 2012
Inspection



Photo: 48 Silt fencing along the northern shoreline of the Western Cell (view northeast)

Western Cell - January 2012
Inspection



Photo: 02 View of Western Cell from the Central Berm (view northwest)

Western Cell - January 2012
Inspection



Photo: 49 Silt fencing along the northern shoreline of the Western Cell (view west)

Western Cell - Newly constructed
July 2011 (view east)



Central Berm - January 2012
Inspection



Photo: 03 View of Western Cell and Central Berm from the Central Berm (view north)

Central Berm - Newly Constructed
July 2011



Eastern Cell - January 2012
Inspection



Photo: 01 View of Eastern Cell from the Central Berm (view east)

Eastern Cell - January 2012
Inspection



Photo: 07 View of Eastern Cell and Central Berm from the Eastern Cell (view northwest)

Eastern Cell - January 2012
Inspection



Photo: 12 View of thickened edge Eastern Cell adjacent to the San Jacinto River; photo shows intact armored cap for areas unable to be surveyed (view north)

Eastern Cell - Newly constructed
July 2011 (view east)



RI/FS Schedule

San Jacinto River Waste Pits Superfund Site



- **Remedial Investigation Report**

- Initial Draft Submitted - Oct 2012
- Approval of Final Report - February 2013



- **Feasibility Study Report**

- Initial Draft Submitted - April 2013
- Approval of Final Report - Sept 2013



- **Proposed Plan for Remediation**

- Public Comment Period Begins – Oct 2013