



Galveston County WCID #1 Local Hazard Mitigation Plan Development

Meeting #1: Kickoff
June 4, 2024

h-gac.com Serving Today • Planning for Tomorrow



1



Today's Agenda

- Welcome and Introductions
- Hazard Mitigation Planning Overview
 - What is a Hazard Mitigation Plan?
 - Benefits of a Hazard Mitigation Plan
 - 2023 Hazard Mitigation Plan Policy Updates
- Project Organization
- Roles and Responsibilities
- Planning Process Overview
- Timeline
- Q&A, Next Steps

h-gac.com Serving Today • Planning for Tomorrow



2

Meeting Goals & Objectives

- Explain hazard mitigation
- Review the benefits of developing a local hazard mitigation plan (LHMP)
- Provide an overview of the planning process
- Inform what roles the planning team, steering committee, and the public serves in the planning process

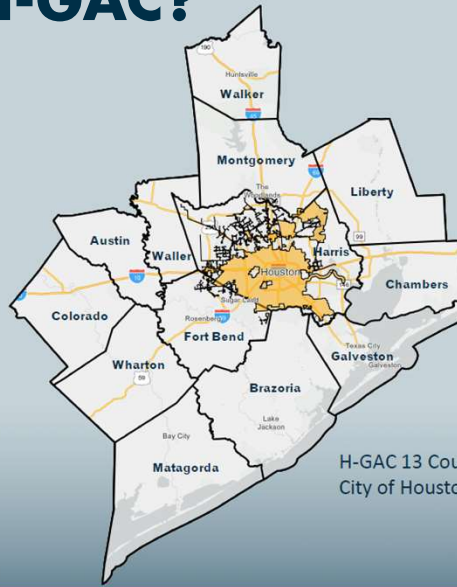
3

Introductions

- Name
- Organization, Title/Role
- Natural hazard

4

What is H-GAC?



H-GAC 13 Counties & City of Houston



h-gac.com

Serving Today • Planning for Tomorrow

5



Who we are

The Galveston County Water Control and Improvement District #1 (WCID #1) provides drinking water, wastewater and contracted solid waste collection services to 8,500 households and businesses in the greater Dickinson area.

Galveston County WCID #1
Dickinson's Water District

Galveston County WCID #1
Dickinson's Water District

6

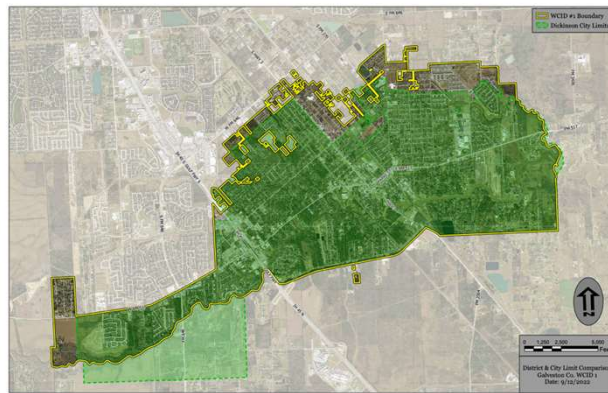
Our vision

Provide excellent customer service by investing in infrastructure improvements, proactive communication, staff development and cost efficiencies



7

Our service area



- **DISTRIBUTE** 2.1 million gallons of drinking water a day
- **TREAT** 1.8 million gallons of sewage a day
- **CONTRACT** to pick up solid waste for 8,500 households and businesses



8

What is Hazard Mitigation Planning?

- Any action taken to reduce or eliminate the long-term risk to life, personal injury, and property damage that can result from a disaster

Disaster Mitigation Act of 2000 (DMA 2000)

“to reduce the loss of life and property, human suffering, economic disruption, and disaster assistance costs resulting from natural disasters.”

- Section 322 specifically addresses mitigation planning and requires FEMA approved hazard mitigation plans as a precondition for receiving FEMA mitigation funds.

Benefits of Hazard Mitigation

- Prevent injury and loss of life
- Prevent damage to community assets
- Reduce exposure to risk from natural hazards
- Reduce costs of disaster response/recovery
- Advance other community objectives

h-gac.com

Serving Today • Planning for Tomorrow



11

Updated Policies

- On April 19, 2022, FEMA released the updated state and local mitigation planning policies for all mitigation plans approved on or after April 19, 2023.

h-gac.com

Serving Today • Planning for Tomorrow



12

Updated Policies

- Defines who local governments must include in the planning process.
 - Socially vulnerable/underserved communities
 - Engagement and active participation
- Climate change and other future conditions
- Facilitates stronger alignment with other FEMA mitigation programs & incorporates new FEMA grant programs
- Mitigation actions are required for every hazard of concern included in the plan

h-gac.com

Serving Today • Planning for Tomorrow



13

Project Organization



h-gac.com

Serving Today • Planning for Tomorrow



14

Planning Partnership Roles and Responsibilities

1. Actively participate throughout the LHMP development
2. Attend meetings
3. Assist with coordination or participation in the public input process
4. Provide information and feedback
5. Adopt & implement the plan

h-gac.com

Serving Today • Planning for Tomorrow



15

Planning Process



h-gac.com

Serving Today • Planning for Tomorrow



16

Plan Components

- WCID #1 Profile
- Planning Process
- Risk Assessment
- Capability Assessment
- Hazard Identification (Hazard Profiles)
- Mitigation Goal and Strategies
- Plan Implementation, Monitoring, and Maintenance
- Appendices



h-gac.com

Serving Today • Planning for Tomorrow

17

Risk and Capability Assessment

2

- Identify hazards
- Outline capabilities
- Assess risks

Identify Hazards

- Location
- Extent
- Historic Occurrences
- Future Probability
- Climate Change

Update Assets/ Outline Capabilities

- Critical Facilities
- Community Lifelines
- Critical Infrastructure
- Population
- Building Stock



h-gac.com

Serving Today • Planning for Tomorrow



18

Critical Facilities & Community Lifelines

- **Critical Facilities**- provide essential services to the community, especially before, during, and after a disaster.
- **Community Lifelines**- provide services that allow continuity of operations of critical business and government functions and are crucial to the health and safety of residents.




Communications


Energy (Power & Fuel)


Food, Hydration, Shelter


Hazardous Materials


Safety and Security

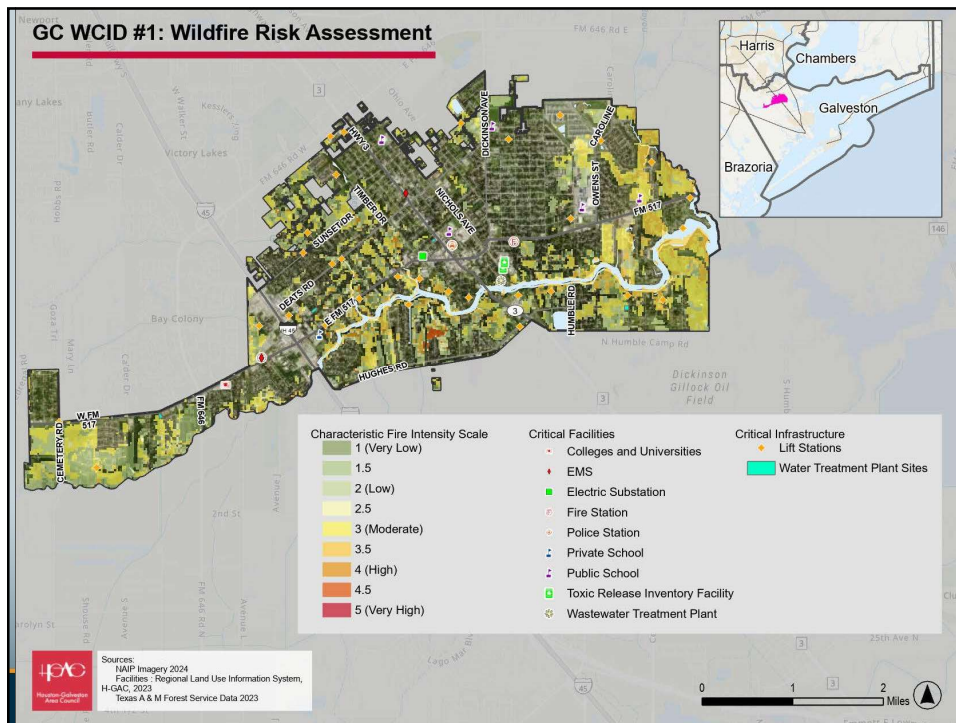

Transportation


Health and Medical

h-gac.com
Serving Today • Planning for Tomorrow


Houston-Galveston Area Council

19



20

Mitigation Strategy 3

Set planning goals and objectives
 Develop mitigation actions
 Draft the action plan

- **Goals/ Objectives**
 - What outcomes do you want to achieve?
- **Actions**
 - What specific actions will be taken to reduce the risk of hazards?
- **Action Plan**
 - How will the actions be prioritized and implemented?

h-gac.com
Serving Today • Planning for Tomorrow

21

- **Goal:**
 - Increase Public Preparedness and Engagement
- **Objective:**
 - Reduce flammable vegetation within areas of moderate or greater wildfire risk.
- **Action:**
 - Increase homeowner awareness about wildfire risk and safety measures, such as hazardous fuels reduction and creating defensible space through social media campaigns, public events, and informational flyers distributed in water bills.

GC WCID #1: Wildfire Risk Assessment

Characteristic Fire Intensity Scale

1 (Very Low)
1.5
2 (Low)
2.5
3 (Moderate)
3.5
4 (High)
4.5
5 (Very High)

Critical Facilities

- Colleges and Universities
- EMS
- Electric Substation
- Fire Station
- Police Station
- Private School
- Public School
- Toxic Release Inventory Facility
- Wastewater Treatment Plant

Critical Infrastructure

- LIFT Stations
- Water Treatment Plant Sites

Scale: 0 1 2 Miles

h-gac.com
Serving Today • Planning for Tomorrow

22

4

Adoption and Implementation

Adopt the plan
Implement the plan
Evaluate and revise the plan

- Plan Adoption
- Integration
 - What specific actions will be taken to reduce the risk of hazards?
- The Action Plan
 - Explore funding options to complete projects
 - Develop grant applications
 - Implement the projects

h-gac.com
Serving Today • Planning for Tomorrow

23

Project Timeline

1

Organize Resources

- Establish the Steering Committee
- Engage the public

YOU ARE HERE

Hurricane Preparedness and Safety Fair: 6/15

2

Risk and Capability Assessment

- Set planning goals & objectives
- Identify hazards
- Outline capabilities
- Assess risks

Risk and Capability Assessment: August 2024

3

Mitigation Strategy

- Identify mitigation actions
- Draft the action plan
- Develop Plan Maintenance Procedures

Mitigation Strategy Identify A September

4

Adoption and Implementation

- Adopt the plan
- Implement the plan
- Evaluate and revise the plan

Submit HMP Draft to TDEM & FEMA March 2025

h-gac.com
Serving Today • Planning for Tomorrow

24

Outreach Methods

- What methods of public involvement have worked well in the past?
 - Community events
 - Questionnaires/surveys
 - Roundtable/forums
 - Social media
 - Web sites

h-gac.com

Serving Today • Planning for Tomorrow



25

Hazard Identification

City of Galveston

- Biologic Event
- Coastal Erosion
- Environmental Disaster
- Extreme Cold
- Extreme Heat
- Drought & Expansive Soils
- Fire (Wild & Urban)
- Flooding
- Hail
- Lightning
- Sea Level Change
- Tornado & Waterspout
- Tsunami
- Tropical Systems and Hurricanes
- Windstorm
- Winter Storm

Port of Galveston

- Coastal erosion/ land subsidence
- Cold Wave
- Drought
- Flooding
- Fog
- Heat Wave
- Hurricanes and tropical storms
- Lightning
- Pandemic
- Thunderstorms
- Tornadoes
- Winter storms

Chambers County

- Climate Change
- Drought
- Extreme Temperatures (heat and cold)
- Flooding (Street/Land)
- Flooding
- Geologic
 - (Landslide, sinkholes, subsidence)
- Hurricane/Tropical Storm
- Tornado
- Severe Weather
 - (high winds, lightning, hail)
- Severe Winter Storms
 - (blizzard, heavy snow, ice)
- Wildfire

h-gac.com

Serving Today • Planning for Tomorrow



26

Hazard Identification

- HAZUS is a nationally applicable standardized methodology that contains models for estimating potential losses from earthquakes, floods, hurricanes, and tsunamis.
- HAZUS uses Geographic Information Systems (GIS) technology to estimate physical, economic, and social impacts of disasters.

h-gac.com

Serving Today • Planning for Tomorrow



27

A map of the Houston-Galveston Area Council region is shown, with the word 'Questions?' overlaid in the center. The map displays the geographical boundaries of the area, including the Gulf of Mexico coastline to the east and south. The text 'Questions?' is written in a large, bold, dark blue font.

Questions?

h-gac.com

Serving Today • Planning for Tomorrow



28

Contact Information

Amanda Ashcroft, AICP

Planner, Community & Environmental

Houston-Galveston Area Council

Amanda.Ashcroft@h-gac.com

713-993-4545



h-gac.com

Serving Today • Planning for Tomorrow