



Project Selection Process



July 12, 2023

Funding Instruction - Approved

Investment Category	Initial Recommendation
Regional Goods Movement	12%
Operational Improvements & Congestion Management	13%
High-Growth Area Needs	25%
Active Transportation	7.5%
Transit	7.5%
Major Projects	30%
Resiliency & State of Good Repair	5%
Safety **	<i>TBD; ~\$30M/year</i>



“0-3 Year Projects” Readiness Questionnaire



TIP Subcommittee
July 12, 2023

Readiness Questionnaire – “0-3 Year Projects”

- Approximately 200 Projects– Mid July 2023
- 3 Week Completion Time
- Completed Only Once for Each Project
- Same Questionnaire for Readiness Assessment Efforts After Results of Criterion Assessment
- 12 Questions with Sub-Questions
- Smart Form so the More Complex, the More Sub-Questions

Realistic Considerations for “0-3 Year Projects”

TIP

- Inclusion in Transportation Improvement Plan (TIP) 8 Months

Red Flags

- ROW – 18-24 months
- Utilities Relocations– 8-12 months
- Railroad Agreements– 8-12 months
- Public Hearing – 8-12 months
- USACE IP and/or USCG Permits- 12-24 months

Regional Goods Movement

- Projects Scoring

Investment Categories: Purpose

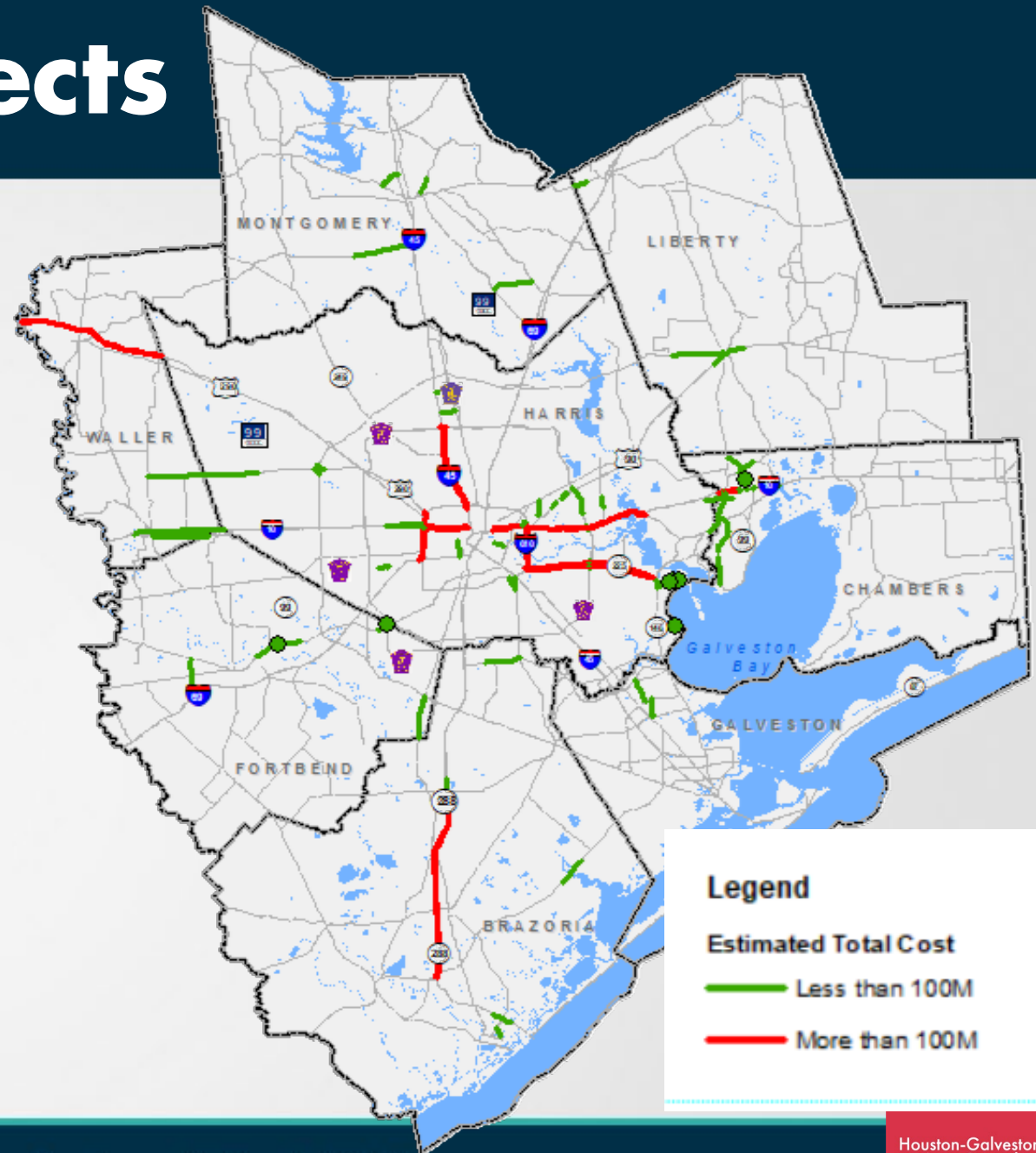
Investment Category	Description and Purpose (“Identify, develop, and fund...”)
Regional Goods Movement	Projects that most effectively enhance or improve safe and reliable freight mobility throughout the region.
Major Projects	Projects that are regional in scope, most effectively address goals and priorities of the Transportation Policy Council or identified in the Regional Transportation Plan and exceed \$100 million in total estimated costs.
High-Growth Area Needs	Projects that most effectively address mobility, accessibility, and congestion mitigation needs in areas experiencing rapid or significant growth in population or other demographic measures, economic development, travel demand, or other indicators identified by local agencies.
Resiliency & State of Good Repair	Projects that most effectively help the transportation system avoid or recover quickly from events that create delays, closures, or other impacts, and projects that provide maintenance of current transportation facilities and services.
Operational Improvements & Congestion Management	Projects that most effectively deliver traffic management and other operational improvements, as well as mitigate current congestion.
Transit	Projects that most effectively provide, expand, or enhance transit infrastructure throughout the region.
Active Transportation	Projects that most effectively enhance or improve walking and bicycling for essential trip-making in the region.
Safety **	Projects that most effectively will reduce or eliminate crashes that result in fatalities and serious injuries.

Eligible Activities Potential Spending

Investment Category	Rehab/ Restoration	Added Capacity	New Road	Access Management	Intersection Improv.	ITS	Sidewalks/ Bike Lanes	Transit Facilities
Regional Goods Movement	12%*							
Operational Improvements	13%*							
High-Growth Area Needs	25%*							
Active Transportation	7.5%*							
Transit	7.5%*							
Major Projects (~25%*)	30%*							
Resiliency **	5%*							
Safety **								
Potential availability	24.5%	80%	67%	80%	92.5%	92.5%	70%	75.5%

Submitted RGM Projects

Submitted	Sponsors	Projects
Total	15	88
> than \$100 M	2	24
< than \$100 M	15	64



Segmented Projects

Projects not Scored	Segments/Projects	Scored	Cost (\$M)
FM 529	3	No	\$181
US 90	3	No	\$141
SL 8 (already 10YP)	1	No	\$60

Segments combined for scoring	Segments/Projects	Scored	Cost (\$M)
US 90 A	2	Yes	\$77
IH 10 W FR	2	Yes	\$54
FM 1405	2	Yes	\$32

Scored Projects

	# of Projects	Cost (\$M)
Projects Scored	55*	\$1,968
≥ 50 Points (Moving to BCA)	40	\$1,383
< 50 Points	11	\$326
Verifying Eligibility	4	\$260

*Reduced from 64 to 55 for projects with adjoining segments

IC Focused Criteria - Scoring

Criteria	Scoring Methodology
Recommended in a freight plan and priority (10 Pts)	2-part question. <i>Projects that referred to recommendations included in the draft H-GAC RGMP were all considered as medium priority and scored 5 points.</i>
Located on a freight Corridor and percent daily truck volumes (10 Pts)	Existing truck percentages were verified based on existing traffic counts data.
Connectivity to freight generators (10 Pts)	H-GAC resiliency tool was reviewed for projects linkage to port or airport score. Connectivity to scores for other freight generators are based on sponsor responses.
Narrative explaining how project improves freight movement (5 Pts)	Based on narrative. All projects that included grade separations scored 5, all projects included ITS scored 4, rest of the project scored between 1-3. If projects connected to freight generators scored 2, projects that primarily serve daily commuters and projects that were just added capacity scored 1 point.
Promote off-peak/overnight delivery (5 Pts)	Based on narrative.
Hurricane evacuation route (10 Pts)	Based on project location.

Summary of IC Focused Criteria Scores

Recommended in a Freight Plan and Priority/Ranking (10 Pts)						
	Max Points	# of Proj Scored	Min Points	# of Proj Scored	Average	# of Proj Scored
Recommended in a Freight Plan and Priority/Ranking (10 Pts)	10	8	5	29	6	-
Freight Corridor & Percent Daily Truck Volumes (10 Pts)						
Freight Corridor & Percent Daily Truck Volumes (10 Pts)	Max Points	# of Proj Scored	Min Points	# of Proj Scored	Average	# of Proj Scored
Freight Corridor	2	26	-	-	-	-
Daily Truck Traffic	8	17	1	7	4	11
Total	10	7	1	5	5	0
First-Mile, Last-Mile Connectivity to Freight Generators (10 Pts)						
First-Mile, Last-Mile Connectivity to Freight Generators (10 Pts)	Max Points	# of Proj Scored	Min Points	# of Proj Scored	Average	# of Proj Scored
Connectivity to Port/Airport	10	11	2	10	6	-
Connectivity to Other Freight Generators (10 Pts)	10	6	2	6	6	-
Total	10	21	2	9	7	6

Narrative - Improve Regional Goods Movement (5 Pts)						
	Max Points	# of Proj Scored	Min Points	# of Proj Scored	Average	# of Proj Scored
Narrative - Improve Regional Goods Movement (5 Pts)	5	12	1	8	3	20
Promote Off-Peak/Overnight Delivery (5 Pts)						
	Max Points	# of Proj Scored	Min Points	# of Proj Scored	Average	# of Proj Scored
Promote Off-Peak/Overnight Delivery (5 Pts)	5	12	-	-	-	-
Hurricane Evacuation Route (10 Pts)						
Hurricane Evacuation Route (10 Pts)	Max Points	# of Proj Scored	Min Points	# of Proj Scored	Average	# of Proj Scored
Project Located on an State Designated Evacuation Route	10	6	5	1	9	-
Project Located on an Facility Connected to Hurricane Evacuation Route	5	20	-	-	-	-
Total	10	6	5	22	6	-

Benefits to OIC Criteria - Scoring

Criteria	Scoring Methodology
Improves daily traffic operations (6 Pts)	<p>Scored based on narrative and project scope.</p> <p>Intersection improvement, Access management, turn lanes, median turn lanes, ITS all received - 3 points</p> <p>Grade separations – 6 points</p> <p>New roads parallel to existing facilities – 2 points</p> <p>Only added capacity – 1 point</p>
Benefits high growth area (5 Pts)	Based on narrative.
Improves conditions for walking and bicycling (2 Pts)	Based on narratives and project scope
Improves conditions for transit users (3 Pts)	Based on narrative.
Reduces inoperability and improves sate of good repair (4 Pts)	Based on narrative.

Summary of OIC Criteria Scores

Improves Daily Traffic Operations (6 Pts)						
	Max Points	# of Proj Scored	Min Points	# of Proj Scored	Average	# of Proj Scored
Improves Daily Traffic Operations (6 Pts)	6	8	1	5	3	31
Benefits High Growth Areas (5 Pts)						
	Max Points	# of Proj Scored	Min Points	# of Proj Scored	Average	# of Proj Scored
Benefits High Growth Areas (5 Pts)	5	49	-	-	-	-
Improves Traffic Conditions for Walking and Bicycling (2 Pts)						
	Max Points	# of Proj Scored	Min Points	# of Proj Scored	Average	# of Proj Scored
Improves Traffic Conditions for Walking and Bicycling (2 Pts)	2	38	-	-	-	-

Improves Traffic Conditions for Transit (3 Pts)						
	Max Points	# of Proj Scored	Min Points	# of Proj Scored	Average	# of Proj Scored
Improves Traffic Conditions for Transit (3 Pts)	3	15	-	-	-	-
Reduces Inoperability and Improves State of Good Repair (4 Pts)						
	Max Points	# of Proj Scored	Min Points	# of Proj Scored	Average	# of Proj Scored
Reduces Inoperability and Improves State of Good Repair (4 Pts)						
Reduces Inoperability	2	39	1	6	3	39
Improves SOGR	2	44	1	6	3	44
Total	4	41	2	1	4	41

Planning Factors Criteria - Scoring

Criteria	Scoring Methodology
Safety	Scored based on existing conditions and improvement narratives. <i>Quantified the safety improvement types to calculate CRF of all improvements</i>
Resiliency	Existing conditions verified on regional resiliency tool. Improvements scored based on narrative.
Access/Connectivity	Based on # of low-income & minority populations within ¼ mile. And connectivity based on project location.
EJ/Impacts on vulnerable populations	Based on narratives describing benefits to vulnerable populations.
Impacts on natural and cultural resources	Based on narrative and H-GAC calculated NOx and VOC emission reductions.

Summary of PF Criteria Scores

Safety (7 Pts)						
Safety (7 Pts)	Max Points	# of Proj Scored	Min Points	# of Proj Scored	Average	# of Proj Scored
Existing Conditions	3	16	2	14	3	16
Improvement Narrative	4	26	2	10	3	13
Total	7	9	2	4	5	5
Resiliency (5 Pts)						
Resiliency (5 Pts)	Max Points	# of Proj Scored	Min Points	# of Proj Scored	Average	# of Proj Scored
Vulnerability Score	1	10	0	0	0	0
Criticality Score	1	13	0	0	0	0
Improvement Narrative	3	1	2	51	2	51
Total	4	32	2	51	3	15
Access/Connectivity (5 Pts)						
Access/Connectivity (5 Pts)	Max Points	# of Proj Scored	Min Points	# of Proj Scored	Average	# of Proj Scored
Low-income & Minority Households within 1/4 mile	2	23	1	26	1	23
Connectivity to Medical Facility	1	14	-	-	-	-
Connectivity to Schools	1	26	-	-	-	-
Connectivity to Social Services	1	11	-	-	-	-
Total	5	4	1	16	3	17

EJ/Impacts on Vulnerable Populations (5 Pts)						
EJ Impacts on Vulnerable Populations (5 Pts)	Max Points	# of Proj Scored	Min Points	# of Proj Scored	Average	# of Proj Scored
Benefits Vulnerable Populations	3	51	2	2	3	51
Mitigation of Hazardous Impacts	2	48	1	1	2	48
Total	5	45	2	1	5	45
Impacts on Natural and Cultural Resources (5 Pts)						
Impacts on Natural and Cultural Resources (5 Pts)	Max Points	# of Proj Scored	Min Points	# of Proj Scored	Average	# of Proj Scored
Avoids/Mitigates Impacts on Natural and Cultural Resources	3	53	-	-	-	-
Emissions Reduction	2	34	1	14	2	34
Total	5	33	2	1	4	5
Innovation (3 Pts)						
Innovation (3 Pts)	Max Points	# of Proj Scored	Min Points	# of Proj Scored	Average	# of Proj Scored
Innovation (3 Pts)	3	24	2	11	3	24

Draft RGM Projects Ranking & Next Steps

- Initial draft scores and ranking
- Sponsors will get an opportunity to challenge staff scores
- Final criteria scores and ranking will be determined after sponsors validate scoring
- Projects scoring 50 points or higher will move to BCA & project readiness evaluation phase
- Final scores and ranking will be determined after BCA scores
- Sponsors will get an opportunity to challenge BCA scores
- Final final scores and ranking will be determined after sponsors validate BCA scoring
- Final recommendation of project ranking will be presented to TAC and TPC

Project ID	Agency Name	Project Title	Facility/Street/Highway	Limits	Description	Estimated Total Cost	Total IC Focused Score	Total OIC Score	Total PF Score	Total Scores	Rank
1101	TxDOT Houston District	SH 146 DC Ramps to Barbours Cut Port Terminal	SH 146	AT BARBOURS CUT BLVD	CONSTRUCT 3 DCs (SB-EB, WB-NB [SH 146], WB-NB [SH 225])	\$50,000,000	40	18	24	82	1
1103	TxDOT Houston District	SH 225 at SL 8 Three Remaining DC ramps	SH 225	AT SL 8	CONSTRUCT 3 DIRECT CONNECTOR RAMPS (EB-NB, EB-SB, WB-SB)	\$95,000,000	40	18	23	81	2
1252	Harris County Engineering	East Richey Rd Improvement Project	E Richey Road	I45 NBFR to Grovedale Rd	Safety improvements, access management, driveways, sidewalks and improved street geometry.	\$6,100,000	34	20	24	78	3
1117	TxDOT Houston District	SH 332 Grade Separation at FM 523	SH 332	From N of FM 523 to S of FM 523	Construct grade separation at FM 523.	\$24,710,000	36	16	22	74	4
1087	TxDOT Houston District	IH 610 E Reconstruction and Widening to add Managed lanes	IH 610 E	From SH 225 to IH 45 S	RECONSTRUCT AND WIDEN FROM 8 TO 12 LANE (ADD 4 MANAGED LANES) - Safety, operational and mobility improvements to the IH 610 E mainlanes and frontage roads, based on results of the SH 225 PEL/IH 610 East PEL study	\$50,000,000	29	21	23	73	5
1102	TxDOT Houston District	SH 146 Widening and other improvements	SH 146	From Ferry Road to Chambers C/L (Cedar Bayou)	Reconstruct and widen from 4 to 6 lanes, median, bicycle/pedestrian facilities and intersection improvements.	\$90,000,000	33	15	25	73	6
833	Harris County Engineering	Rankin Road Access Management Project	Rankin Road	IH 45 NBFR to Ranch View Trail	Add center two-way left turn lane, signal modifications (leading pedestrian intervals, crosswalks, ADA ramps), and sidewalk improvements to mitigate serious injuries and fatalities on 1.5 mile Vision Zero High Injury Network corridor.	\$12,200,000	33	16	23	72	7
1058	TxDOT Houston District	IH 10 W Frontage Roads	IH 10 W	From FM 359 to Fort Bend County Line	CONSTRUCT 2 TWO LANE FRONTAGE ROADS ON NEW LOCATION (EASTBOUND AND WESTBOUND). This project fills in the gap of the frontage road system in Fort Bend County on IH 10.	\$50,750,000	33	16	22	71	8
1059	TxDOT Houston District	IH 10 W Frontage Roads	IH 10 W	From Waller County Line to Cane Island Parkway	CONSTRUCT 2 TWO LANE FRONTAGE ROADS ON NEW LOCATION (EASTBOUND AND WESTBOUND). This project fills in the gap of the frontage road system in Fort Bend County on IH 10.	\$3,700,000					

DRAFT

Project ID	Agency Name	Project Title	Facility/Street/Highway	Limits	Description	Estimated Total Cost	Total IC Focused Score	Total OIC Score	Total PF Score	Total Scores	Rank
1180	TxDOT Houston District	US 90 Grade Separation at Purple Sage	US 90	From West of Purple Sage to East of Purple Sage	Construct grade separation (6 Main Lanes) in gap of US 90 mainlanes at Purple Sage intersection.	\$34,300,000	31	20	20	71	9
1211	East End District in Coordination with Buffalo Bayou Partnership and Harris County Precinct 2	Navigation Boulevard Reconfiguration	Navigation Boulevard	Lockwood Drive to Mack Street	Reconfigure multimodal mobility corridor by converting unused lane capacity into a new dedicated commuter bike route, pedestrian amenities and additional greenspace. Project scope includes necessary work on public utilities. Project is a major component of the Buffalo Bayou East Master Plan.	\$17,250,000	31	15	25	71	10
851	Harris County Engineering	Sheldon Road (North) Improvement Project	Sheldon Road	US90 to Sheldon Ridge	Reconstruct and widen, existing 2 lane concrete overlaid with asphalt to 4 lanes of reinforced 12" concrete roadway. Includes bridge section, 2 major throughfare intersections and multiple industrial/commercial business entrances. drainage, sidewalks and landscaping and safety. Considering existing railroad at-grade crossing to be a separate line item.	\$22,800,000	31	13	22	66	12
1204	City of Houston	Gellhorn Dr.	Gellhorn Dr.	Between I-10 on the south and I-610 on the north	Project includes improvement of freight connectivity between IH-610 & IH-10 as well as intersection operations. Improvements will also create safer pedestrian & bicycle facilities and mitigate storm sewer deficiencies.	\$17,786,415	29	18	17	64	13
662	City of Dickinson	Dickinson Ave./FM 1266 Safety Improvements	Dickinson Avenue / FM 1266	FM 646 to FM 517	The improvement will be a full reconstruction of the roadway including the addition of street lighting, sidewalk facilities, and upgrades to signalized intersection at Deats Road. To accommodate the addition of sidewalks, the existing open ditches will be replaced with culverts.	\$15,000,000	22	20	22	64	14
941	PORT OF HOUSTON AUTHORITY	Bayport Container Terminal Overpass.	PORT RD	FM 146 TO CRUISE ST	CONSTRUCTION OF RAILROAD OVERPASS ON PORT ROAD LEADING TO THE BAYPORT CONTAINER TERMINAL.	\$18,996,668	33	14	17	64	15
751	City of Sugar Land	ITS Railroad Monitoring, Notification, & Communication (CTR2203)	Cravens Road	Pitts Road	Install railroad notification DMS prior to RR crossings to reroute traffic; Add Lidar or other technology to the Rail Monitor System to detect trains on dual tracks.	\$2,100,000	27	14	22	63	16

DRAFT

Project ID	Agency Name	Project Title	Facility/Street /Highway	Limits	Description	Estimated Total Cost	Total IC Focused Score	Total OIC Score	Total PF Score	Total Scores	Rank
1222	Gulfgate Redevelopment Authority	Telephone Rd Reconstruction	Telephone Rd	IH 610 Frontage - Reveille St	Replace all public infrastructure and reconfigure roadway to enhance multimodal access and safety (roadway, utilities, access management, pedestrian realm, bike lane)	\$45,000,000	20	18	25	63	17
1012	TxDOT Houston District	FM 359 Widening	FM 359	From South IH 10 W to US 90	Widen from 2 lanes to 4 lane urban divided roadway	\$7,750,000	24	15	23	62	18
1065	TxDOT Houston District	IH 10 W (Inner Katy) Reconstruction and Managed Lanes	IH 10 W	From Voss Rd to IH 610 W	INNER KATY SEG 4: Reconstruct 10 mainlanes and two 3-lane frontage roads. Construct 4 new non-tolled managed lanes and drainage improvements	\$25,000,000	19	23	20	62	19
1115	TxDOT Houston District	SH 3 Intersection Improvements - SH 3 at S Richey St, Edgebrook Dr, El Dorado Blvd, and Bay Area Blvd	SH 3	At South Richey, Edgebrook Dr, El Dorado Blvd, and Bay Area Blvd	Change signals to mast arms, replace RR arms, and gates, and lengthen railroad planking. The purpose of the project is to extend sidewalks across the RR tracks parallel to SH 3.	\$4,840,000	22	18	22	62	20
1168	TxDOT Houston District	SS 10 Widening	SS 10	From SH 36 West of Rosenberg to IH 69 S	WIDEN TO 4-LANE DIVIDED ROADWAY	\$53,870,000	24	17	21	62	21
1108	TxDOT Houston District	SH 288 Widening	SH 288	From SH 99 (CR 60) to FM 1462	Reconstruct and widen from 4-lanes to 6-lanes. The proposed project will widen to the inside, adding two additional lanes (one in each direction), along with turn lanes at select locations. It will provide drainage for stormwater to accommodate the additional pavement. Frontage roads are not included in this project.	\$56,300,000	26	15	20	61	22
1201	City of Houston	Oates Rd	Oates Rd.	From Wallisville to Beaumont Highway	Improvements include full concrete reconstruction of the corridor to include two 11-ft lanes (with 1-ft offsets) with a 12-ft center turn lane in the middle, as well as pedestrian improvements which include two 10-ft shared use paths on both sides of the road.	\$29,500,000	22	18	20	60	23
1243	SW HOU Redev Auth (TIRZ 20)	Harwin Dr Reconstruction	Harwin Dr	S Gessner Rd - Fondren Rd	Replace all public infrastructure (road diet, utilities, traffic controls, pedestrian realm)	\$18,200,000	17	20	24	61	24
1010	TxDOT Houston District	FM 3083 Widening	FM 3083	From SH 105 W to IH 45	Widen from 2-lane to a 4-lane divided roadway.	\$33,750,000	22	14	23	59	26
1176	TxDOT Houston District	US 90 Greens Bayou Bridge	US 90	From W of Greens Bayou to E of Greens Bayou	Construct bridge (6 Main Lanes) over Greens Bayou in gap of US 90 mainlanes.	\$29,100,000	28	11	20	59	27

Project ID	Agency Name	Project Title	Facility/Street /Highway	Limits	Description	Estimated Total Cost	Total IC Focused Score	Total OIC Score	Total PF Score	Total Scores	Rank
969	TxDOT Beaumont District	SH 146 TURN LANES	SH 146	AT IH10	DUAL TURN LANES FOR NB	\$1,000,000	25	17	16	58	28
973	TxDOT Beaumont District	Dayton Relief Route	US 90	TBD	Construct relief route around Dayton	\$75,000,000	19	20	19	58	29
1020	TxDOT Houston District	FM 518 Widening	FM 518	From FM 865 to SH 35	Widen from 4-lanes to 6-lanes. A raised median will be included and may vary between 14 and 18 feet. Convert the existing open ditch drainage system to a curb and gutter drainage system. In addition, outside pedestrian sidewalks and bikeways are proposed.	\$76,380,000	21	12	24	57	31
1181	TxDOT Houston District	US 90 A Widening	US 90 A	From FM 359 to SH 99	RECONSTRUCT AND WIDEN FROM 4 TO 6 LANES DIVIDED	\$48,200,000	14	17	26	57	32
1184	TxDOT Houston District	US 90A Widening	US 90A	From FM 762 to FM 359	Widen from 4-lanes to 6-lanes divided (phase 3 of 3)	\$28,570,000					
968	TxDOT Beaumont District	FM 1960 Widening	FM 1960	From SH 321 to SH 99	Widen from 2 to 4 lanes	\$27,500,000	15	20	20	55	33
1026	TxDOT Houston District	FM 521 Widening and Railroad grade separation	FM 521	From CR 56 to SH 6	Widen from 4-lanes to 6-lanes divided. The FM 521 project extends from State Highway 6 to County Road 56 in Fort Bend County. The project includes a railroad grade separation. The area is rapidly developing with new subdivisions and a new high school adjacent to the road.	\$53,600,000	17	14	24	55	34
1235	Montrose TIRZ 27 Redevelopment Authority	Montrose Boulevard Reconstruction	Montrose Boulevard	West Clay to US-59/IH-69	Replace all public infrastructure (roadway, utilities, access management, pedestrian realm, transit, bike lane)	\$47,000,000	12	20	25	57	35
996	TxDOT Houston District	FM 1495 Widening	FM 1495	From FM 523 to North of Brazos River Bridge	Widen from 2-lane to 4 -lane roadway	\$17,000,000	18	17	19	54	36
962	TxDOT Beaumont District	IH-10 Ramp Relocations	IH-10	From SH 146 to FM 565	Relocate entrance / exit ramps	\$35,000,000	25	15	15	55	37
1005	TxDOT Houston District	FM 2855 Extension to IH 10 W	FM 2855	From US 90 to IH 10 W	Reconstruct and Widen from 2 to 4 lanes and extend FM 2855 (currently known as Brookline Rd) to IH 10 W	\$35,000,000	20	13	20	53	38

DRAFT

Project ID	Agency Name	Project Title	Facility/Street /Highway	Limits	Description	Estimated Total Cost	Total IC Focused Score	Total OIC Score	Total PF Score	Total Scores	Rank
963	TxDOT Beaumont District	FM 1405 Widening	FM 1405	From SH 99 south to FM 2354	Widen from 2 to 4 lanes with center turn lane	\$16,000,000	21	12	19	52	39
964	TxDOT Beaumont District	FM 1405 Widening	FM 1405	From FM 565 south to SH 99	Widen from 2 to 4 lanes with center turn lane	\$16,000,000					
1128	TxDOT Houston District	SH 6 Intersection Improvements at FM 529	SH 6	At FM 529	INTERSECTION IMPROVEMENTS	\$15,500,000	14	17	21	52	40
640	Chambers County	Jonnie G Jennings Dr	Jonnie G Jennings Dr	From FM 1405 East to FM 2354	Construct 2 lane concrete freight roadway	\$10,000,000	22	18	11	51	41
733	City of Mont Belvieu	Public Works & Engineering Director	Eagle Dr.	From Fm 565 to SH 146	Reconstruction of 2-lane open ditch to 4-lane Blvd with curb and gutter with sidewalks and bikeway.	\$36,000,000	14	17	19	50	42
1002	TxDOT Houston District	FM 2234 Intersection Improvements	FM 2234	From North of US 90A to South of US 90A	Construct intersection improvements.	\$30,900,000	12	16	22	50	44
1003	TxDOT Houston District	FM 270 Widening	FM 270	From FM 518 to FM 646	Reconstruct and widen from 2-lane to 4-lane roadway and implement access management treatments including raised median and bike/ped facilities.	\$40,800,000	11	15	23	49	45
1256	Montgomery County Precinct 4	Gene Campbell Boulevard	Gene Campbell Boulevard	FM 1314 to FM 1485	Reconstruct 2-lane asphalt roadway with open ditches to a 4-lane asphalt roadway with open ditches and a center turn lane.	\$35,712,720	16	13	20	49	46
990	TxDOT Houston District	FM 1488 Widening and Access Management	FM 1488	From FM 2978 to IH 45 N	Widen from 4 to 6 Lanes	\$67,800,000	12	13	22	47	48
637	Chambers County	Chambers Parkway	Chambers Parkway	Approx. 0.5 mi. south of I10 from S.H. 146 to F.M. 3180	Reconstruction of existing 2 lane roadway. Along with construction of a new 4 lane roadway.	\$30,000,000	15	16	16	47	49
966	TxDOT Beaumont District	SH 105 Widening	SH 105	From Montgomery County Line to BS 105T	Widen from 2 to 4 lanes divided	\$20,000,000	17	15	14	46	50
658	City of Conroe	Airport Road Widening	Airport Road	FM 1314 / Porter Rd to FM 3083	Widen existing two-lane road (no sidewalks) to four lane with sidewalks. Scope includes stormwater, water, and wastewater.	\$22,000,000	6	17	21	44	51
734	City of Mont Belvieu	Public Works & Engineering Director	FM 565	From SH 99 to Canal St.	Reconstruction of 2-lane open ditch to 4-lane Blvd with curb and gutter with sidewalks and bikeway.	\$24,000,000	9	17	18	44	52

Project ID	Agency Name	Project Title	Facility/Street/Highway	Limits	Description	Estimated Total Cost	Total IC Focused Score	Total OIC Score	Total PF Score	Total Scores	Rank
735	City of Mont Belvieu	Public Works & Engineering Director	Traffic Management Center	City Wide	Construction of a traffic management center for the City of Mont Belvieu	\$3,000,000	12	14	18	44	53
639	Chambers County	NEEDLEPOINT RD	Needlepoint Rd	From IH-10 south to FM 565	Reconstruction widen from 2 to 4 lanes	\$8,000,000	10	11	16	37	54
1000	TxDOT Houston District	FM 2004 Bridge Replacement	FM 2004	At Chocolate Bayou	Replace existing bridge and approaches (NBI No. 12-020-0-2523-02-011) - Demolish the existing bridge and roadway approaches and replace with a new, 2-lane bridge and new bridge approaches and bring the bridge and approaches up to current standards.	\$75,000,000	5	14	12	31	55
						\$1,708,965,803					
943	PORT OF HOUSTON AUTHORITY	Port Houston Barbours Cut Terminal Container Yard 7 Upgrade	BARBOURS CUT CONTAINER YARD	AT BARBOURS CUT	RECONSTRUCT CONTAINER YARD 7 AT BAYPORT TO INCLUDE STRENGTHEN INFRASTRUCTURE.	\$53,300,000	38	7	14	59	25
942	PORT OF HOUSTON AUTHORITY	Port Houston Barbours Cut Terminal Container Yard 6 Upgrade	BARBOURS CUT CONTAINER YARD	AT BARBOURS CUT	RECONSTRUCT CONTAINER YARD 6 AT BAYPORT TO INCLUDE STRENGTHEN INFRASTRUCTURE.	\$42,250,000	38	7	12	57	30
945	PORT OF HOUSTON AUTHORITY	Keep the Supply Chain Moving with the Bayport Terminal Yard Expansion	BAYPORT CONTAINER YARD	AT BAYPORT	CONSTRUCT 46 ACRES OF CONTAINER YARD AT BAYPORT TERMINAL.	\$95,018,093	28	7	15	50	43
944	PORT OF HOUSTON AUTHORITY	Barbours Cut Container Terminal Wharf Rehabilitation	BARBOURS CUT WHARF	AT BARBOURS CUT	RECONSTRUCT 1,337 LF OF WHARF AT BAYPORT TO INCLUDE STRENGTHEN INFRASTRUCTURE.	\$69,342,000	28	7	12	47	47
						\$259,910,093					

DRAFT

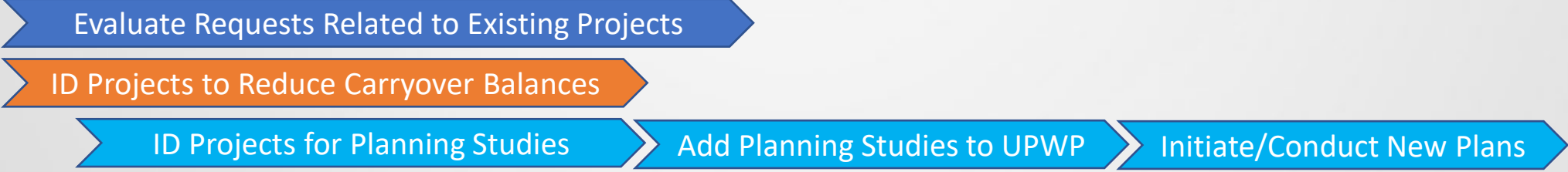
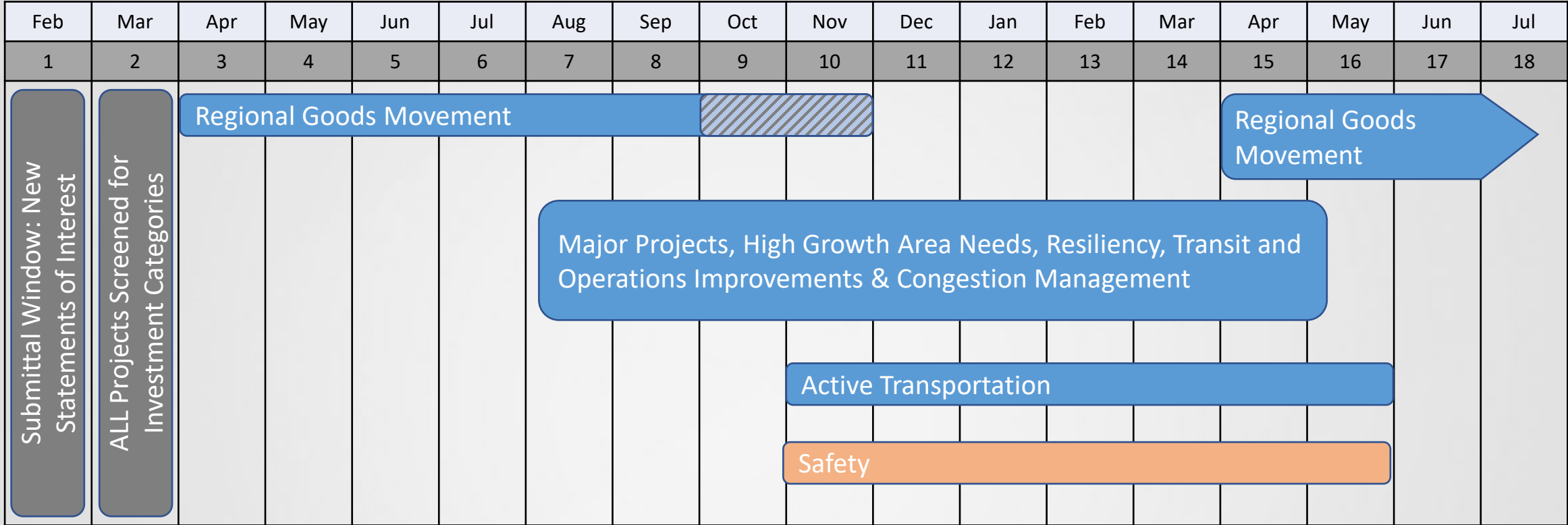
Benefits Calculators

- Staff Provided Crash, Delay and Emissions Reduction Calculators
- Sponsors may calculate and provide additional benefits
 - Use FHWA BCA Guidance and provide full Documentation
- Total Benefits/ Costs
- Benefits/ Costs ratios in to points 0-100
 - Review outliers
- Staff will provide excel budget templates

RGM Next Steps/Timeline

	RGM Selection Process Steps	Schedule
Staff	Sponsor meetings to debrief	7/13 - 7/20
Staff	Provide Benefit Calculators	7/18
Staff	Benefit Calculators Presentation	7/17 - 7/21
Sponsors	Provide Benefit - Cost Information	7/19 - 8/8
Sponsors	Provide Project Budget	7/19 - 8/8
Sponsors	Provide Readiness Information	7/19 - 8/8
Staff	Validation of Scores and BCAs	8/9 - 8/22
Staff	Project Readiness Determined (for Sorting)	8/9 - 8/22
Staff	Ranked list Developed	8/23 -9/8
TAC/TPC	Ranked List Preview Approval	September
Staff	TIP/RTP Amendments for AQ-Exempt Projects	TBD
Staff	TIP/RTP Amendments for AQ-Non-Exempt Projects	TBD

Investment Categories – Revised Timeline



Contacts



Vishu Lingala
Principal Transportation Planner

Vishu.Lingala@H-GAC.com

713-993-4561

Callie Barnes

Principal Transportation Planner

Callie.Barnes@H-GAC.com

832-681-2615

Adam Beckom

Manager

Programming and Project Delivery

Adam.Beckom@H-GAC.com

713-993-4567