



Call for Projects Workshop



TIP Subcommittee Workshop
March 9, 2022

Regional Collaboration • Transportation Planning • Multimodal Mobility

TIP Subcommittee – March 2, 2022

- Presentation on March 9, 2022 will be continued from this point forward.

Meeting Agenda

- Agenda
 - Planning factors continued
 - Benefit/Cost scoring methodology options
 - Process (options)
 - Sequencing (of Investment Categories)
 - Project development timeline
 - Readiness criteria (Phase 1)

Meeting Recap

- Recap

- ✓ Call for projects timeline & in the context of other planning documents
- ✓ Funding allocation summaries (details will be worked out during workshops)
- Planning factors criteria (Continued)
- Benefit/Cost scoring summary (options presented in later slides)

Environmental/Ecological (5 points)

Appid	# or Acres of flood plains	# of acres of wetlands	Total FP/WL (3)	Total FP/WL Score	# of archeological sites	# of historical sites	Total Arch/His site (2)	Total Arch/His site Score	Total Envi Score
100205	11	25	36	2.288	4	0	4	1.571	3.86
100206	2	44	46	2.014	1	0	1	2.000	4.01
100404	34	19	53	1.822	3	0	3	1.714	3.54
100409	22	43	65	1.493	4	0	4	1.571	3.06
100601	11	16	27	2.534	1	0	1	2.000	4.53
100609	9	21	30	2.452	2	0	2	1.857	4.31
100708	34	8	42	2.123	0	0	0	2.000	4.12
100907	23	17	40	2.178	0	0	0	2.000	4.18
200200	3	7	10	3.000	1	0	1	2.000	5.00
200704	45	38	83	1.000	8	0	8	1.000	2.00
300003	2	237	239	1.000	0	0	0	2.000	3.00
300104	0	1	1	3.000	1	0	1	2.000	5.00
300300	36	14	50	1.904	5	0	5	1.429	3.33
300105/300106	12	33	45	2.041	4	0	4	1.571	3.61

		Pedestrian (5 points)					
Appid	Freeway/Non-Freeway	Install new or reconstruct/improve existing sidewalks or multi-use trail	One Dir/Both (2)	Score	Width (> 8ft-3 pt, 5 to 8 ft 2 pt, 5ft - 1 pt)	Score	Total ped Score
100205	Non-freeway	Yes	Both	2	6ft	2	4
100206	Non-freeway	Yes	Both	2	6ft	2	4
100404	Non-freeway	Yes	Both	2	> 8ft	3	5
100409	Non-freeway	Yes	Both	2	>8ft	3	5
100601	Non-freeway	Yes	One	1	5-8ft	2	3
100609	Non-freeway	Yes	Both	2	5-8ft	2	4
100708	Non-freeway	Yes	Both	2	5-8ft	2	4
100907	Non-freeway	Yes (Trail)	Both	2	10ft	3	5
200200	Non-freeway	Yes	Both	2	10ft	3	5
200704	Freeway	na	na	0	na	na	na
300003	Non-freeway	Yes	Both	2	5-8ft	2	4
300104	Freeway	na	na	0	na	na	na
300300	Non-freeway	Yes	Both	2	5-8 ft	2	4
300105/300106	Freeway	na	na	na	na	na	na

		Bicycle (5 points)						
Appid	Freeway/Non-Freeway	Install new or reconstruct/improve existing bike lanes (3) or multi-use trail (3) or wide lanes to accommodate shared route(1) a wide shoulder (3)	Score	If shared route One Dir/Both (1)	Score	Width (> 8ft-2 pt, 5 to 8 ft 1 pt, 5ft - 0 pt)	Score	Total bike score
100205	Non-freeway	Yes (Shared route)	1	Both	1	na	0	2
100206	Non-freeway	Yes (Trail)	3	na	0	10ft	2	5
100404	Non-freeway	Yes (Trail)	3	na	0	10ft	2	5
100409	Non-freeway	No	0	na	0	na	0	0
100601	Non-freeway	Yes (Trail)	3	na	0	>8ft	2	5
100609	Non-freeway	No	0	na	0	na	0	0
100708	Non-freeway	Yes (bike facility)	3	na	0	5-8ft	1	4
100907	Non-freeway	Yes (Trail)	3	na	0	10ft	2	5
200200	Non-freeway	Yes (Trail)	3	na	0	10ft	2	5
200704	Freeway	na	na	na	na	na	na	na
300003	Non-freeway	Yes (Trail)	3	na	0	15ft	2	5
300104	Freeway	na	na	na	na	na	na	na
300300	Non-freeway	Yes (Shared route)	1	Both	1	na	0	2
300105/300106	Freeway	na	na	na	na	na	na	na

		Transit (5 points)	
Appid	Freeway/Non-Freeway	Local bus route or P&R station exists within 1/4 mile (5)	Transit Score
100205	Non-freeway	No	0
100206	Non-freeway	No	0
100404	Non-freeway	Yes	5
100409	Non-freeway	No	0
100601	Non-freeway	yes	5
100609	Non-freeway	Yes	5
100708	Non-freeway	Yes	5
100907	Non-freeway	No	0
200200	Non-freeway	Yes	5
200704	Freeway	na	0
300003	Non-freeway	No	0
300104	Freeway	na	na
300300	Non-freeway	No	0
300105/300106	Freeway	na	na

		For Freeways							
Appid	Freeway/Non-Freeway	HOV/Managed lanes exist (5)	Score	Two-way (lanes separated) or one way (Peak directional) (5)	Score	Facility serves P&R route (5)	Score	Total Multimodal score	2021 Sample Total PF score
100205	Non-freeway							6	48
100206	Non-freeway							9	55
100404	Non-freeway							15	77
100409	Non-freeway							5	56
100601	Non-freeway							13	68
100609	Non-freeway							9	53
100708	Non-freeway							13	67
100907	Non-freeway							10	52
200200	Non-freeway							15	56
200704	Freeway	Yes	5	Two-way	5	No	0	10	45
300003	Non-freeway							9	50
300104	Freeway	No	0	Two-way	5	Yes	5	10	64
300300	Non-freeway							6	51
300105/ 300106	Freeway	Yes	5	Two-way	5	No	0	10	63

Sample Planning Factors – Scoring Transit

	Connectivity to employment, schools, medical facilities, other point of interests (25)					
Appid	Jobs (10) Scored with roadway projects	Score	School (K-12, Community College, University campus) with in 1/4 mile (5)	Clinic hospital within 1/4 mile of transit route (5)	Other points of interest (Social services) (5)	Connectivity score
100208	180,533	10	Yes	Yes	Yes	25
100900	143,605	10	Yes	Yes	Yes	25

Sample Planning Factors – Scoring Transit

	Multi jurisdictional/transit service connectivity (10)	
APPid	Projects provides transit connectivity (P&R, intermodal terminal, purchase of new transit vehicles for a new route) between two jurisdictions.	Score
100208	Yes	10
100900	No	0

Sample Planning Factors – Scoring Transit

	Improve multimodal connectivity/Multimodal accommodations (10 points)						
		Pedestrian (5 points)		Bicycle (5 points)			
Appid	Type or project (BRT, P&R, commuter bus, Local bus service)	Install new or reconstruct/improve existing sidewalks or ADA ramps at bus stops	Score	Install new bike racks at bus/P&R stations, on transit vehicles (Y/N-3)	Install or improve wheelchair accessibility at bus stops or on transit vehicles (Y/N-2)	Score	MM Score
100208	Commuter bus	No	0	Yes	Yes	5	10
100900	Intermodal facility	Yes	5	Yes	Yes	5	10

Sample Planning Factors – Scoring Transit

Appid	Improve/upgrade or installing new technology at bus stops, P&R or on transit vehicles (10)		Current/Estimated Ridership (10)	
	Yes/No	Score	Estimated daily ridership/users	Score
100208	Yes	10	-	10
100900	Yes	10	-	10

Comparative sample scoring

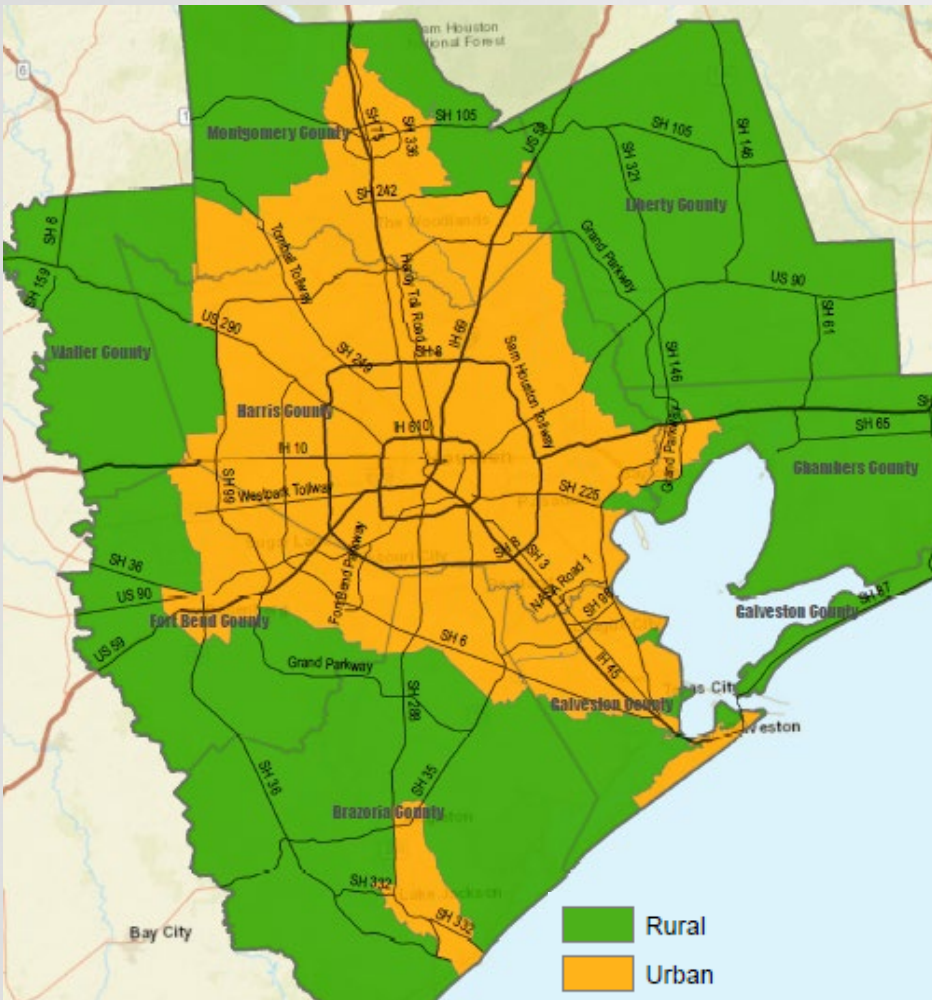
Comparative Scores Rural Projects			
Appid	Separate scoring	Combined Scoring	2018 PF Score
100607	36	39	58
908	47	43	43
300107	56	40	57
200505	57	43	65

Comparative Scores Top Urban Projects			
Appid	Separate scoring	Combined Scoring	2018 PF Score
300105/300106	63	64	80
300104	64	64	75
100601	68	68	77
100404	77	77	78

- Relative scoring per criteria
- Different Max scores for Rural/Urban – Eliminate at-grade RXR, Planning Coordination, ITS, Multi-modal
- 2018 Scores for reference

TAC Recommendation

Adjusted Urbanized Area



- Create Rural Funding Allocation
 - Use an established urbanized area boundary
 - Percentage of total available funds
- Determine Allocation percentage
 - Base on previous TPC action (2019 CFP)
 - 9% of federal funds to projects in rural area
 - “Floor” rather than “Cap”
- Relative scoring for rural projects (conditional)
- Projects must meet minimum required points
 - Threshold TBD (assessing scoring with sample projects)
- Provide opportunity for each local agency to assign additional points to one or more high priority project (details TBD)