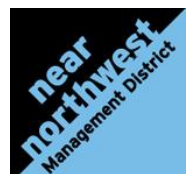


Near Northwest Management District

Livable Centers Study Area

Opportunities & Constraints



Livable Centers Study Area

- Approximately one-mile section of the Antoine Drive corridor
- Beginning south of West Tidwell Road to the edge of Inwood Forest at the north
- From White Oak Bayou and Vogel Creek on the east to the railroad on the west

Livable Centers Study

1. Needs Assessment

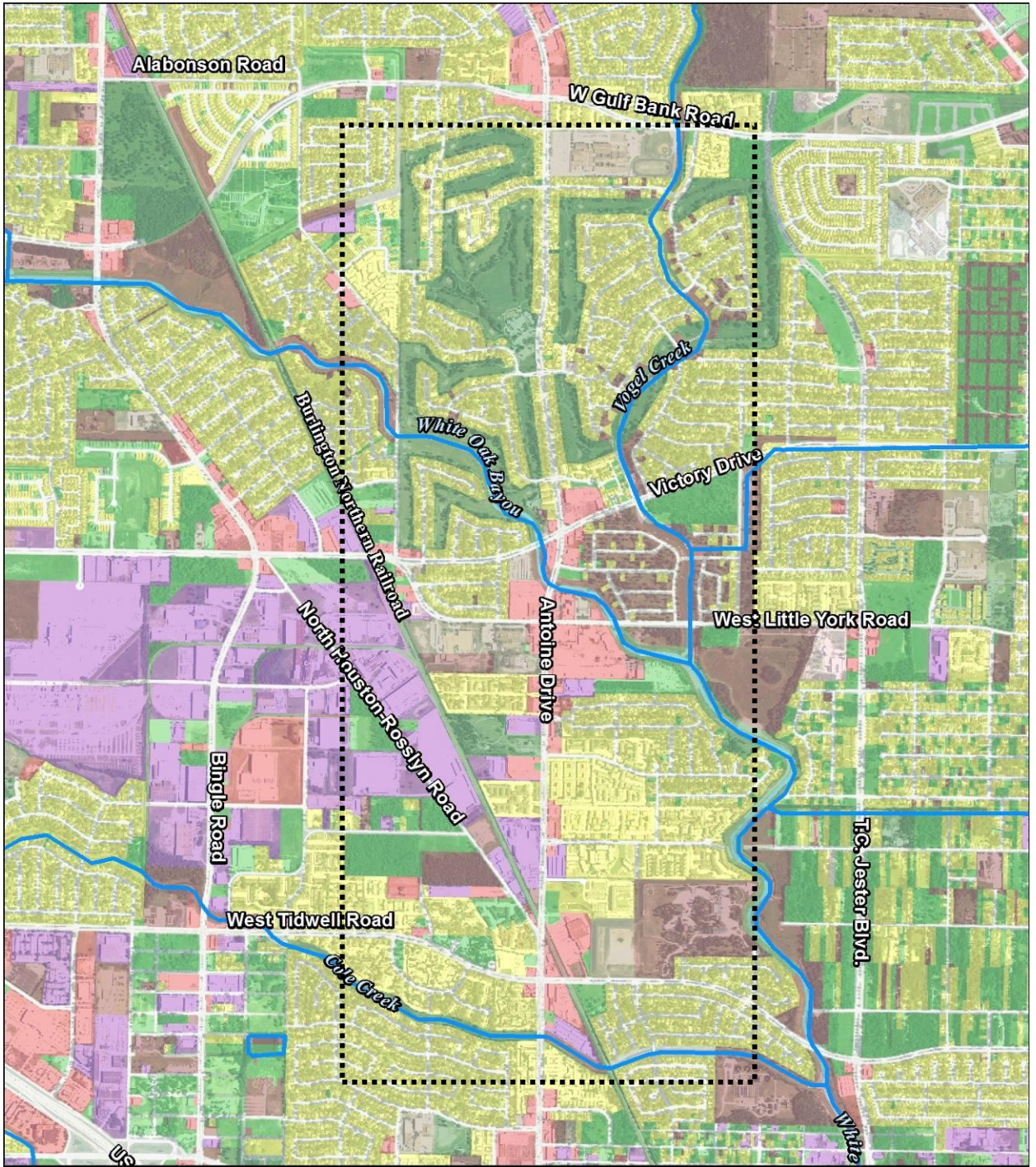
Review Existing Studies
Pedestrian Environment
Connectivity Streets Mobility
Economic and Land Use

2. Develop Conceptual Plan

3. Develop Specific Recommendations

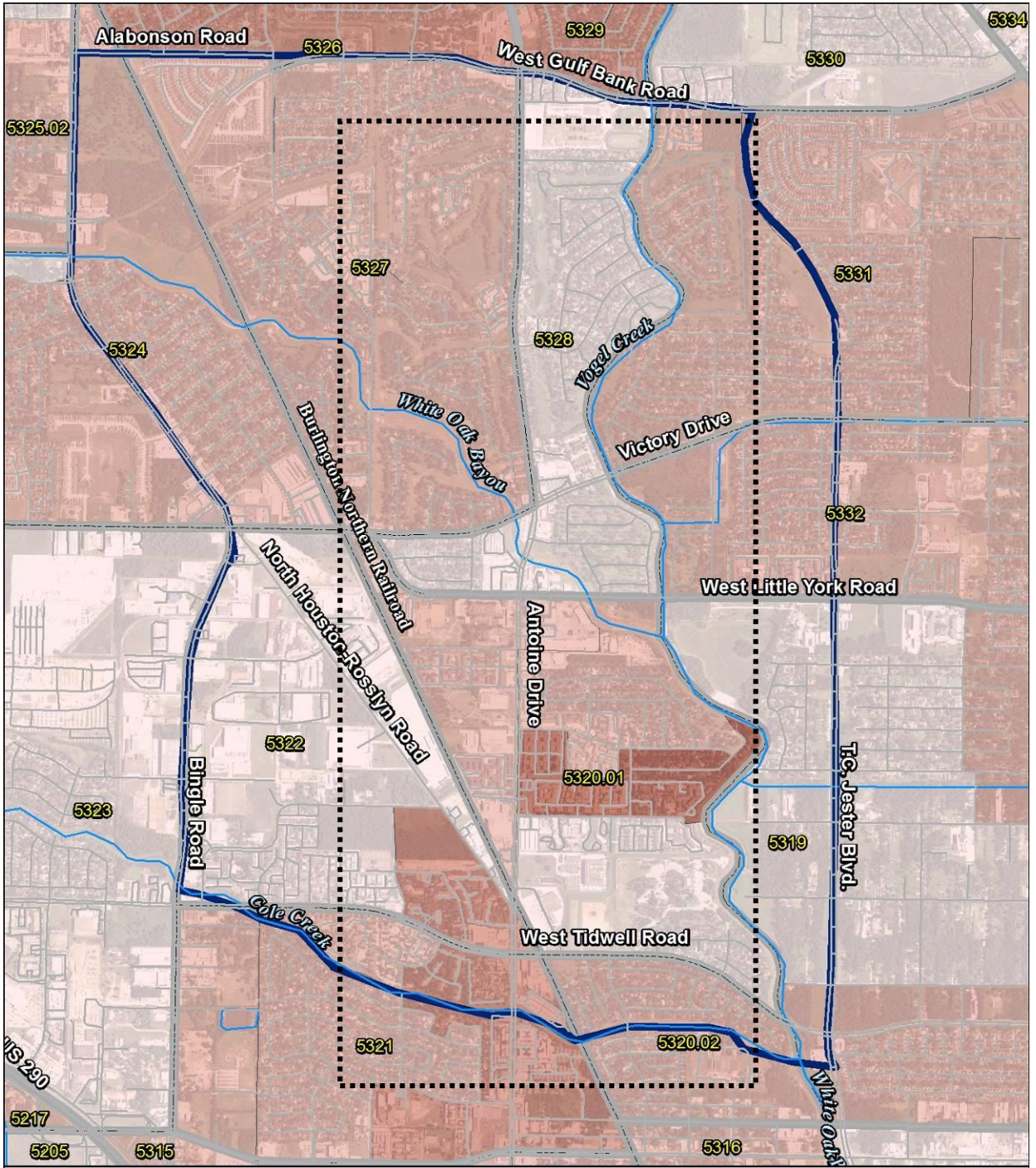
Pedestrian/Circulation
Housing Development
Economic Development
Environment/Sustainability
Specific Plans - "Place"

4. Develop Implementation Plan

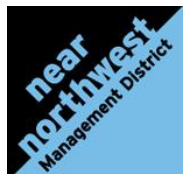


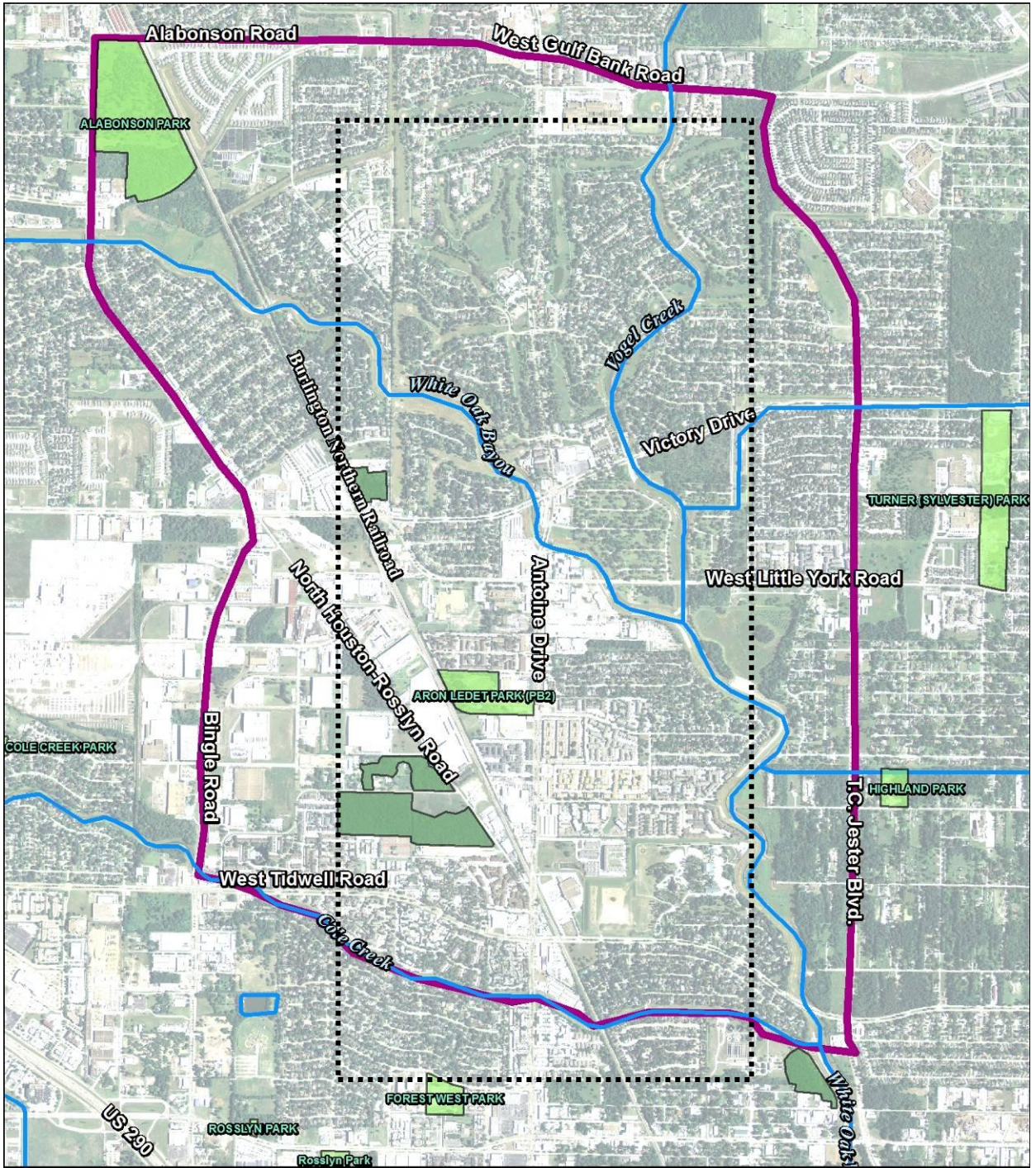
Land Use





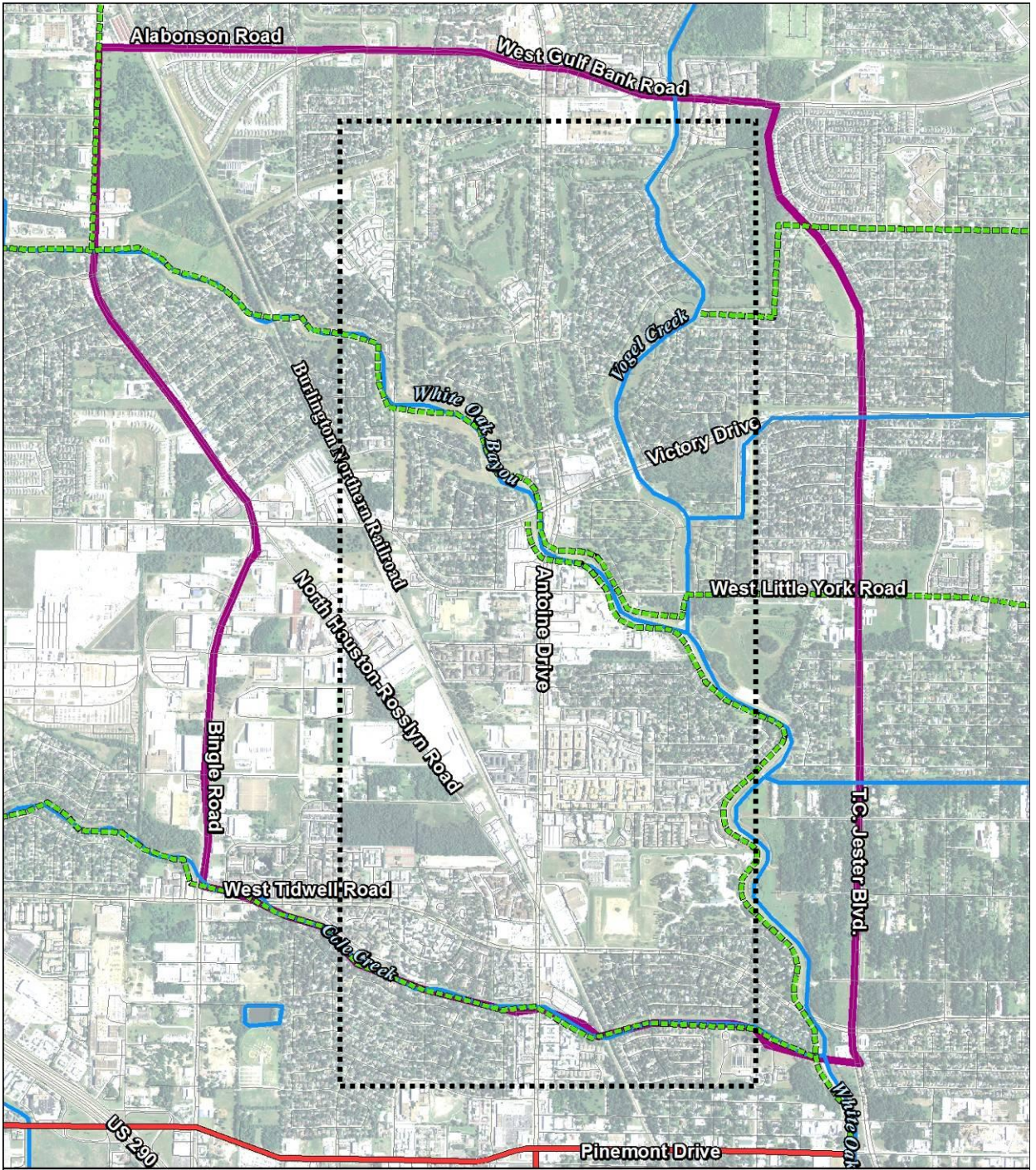
Census





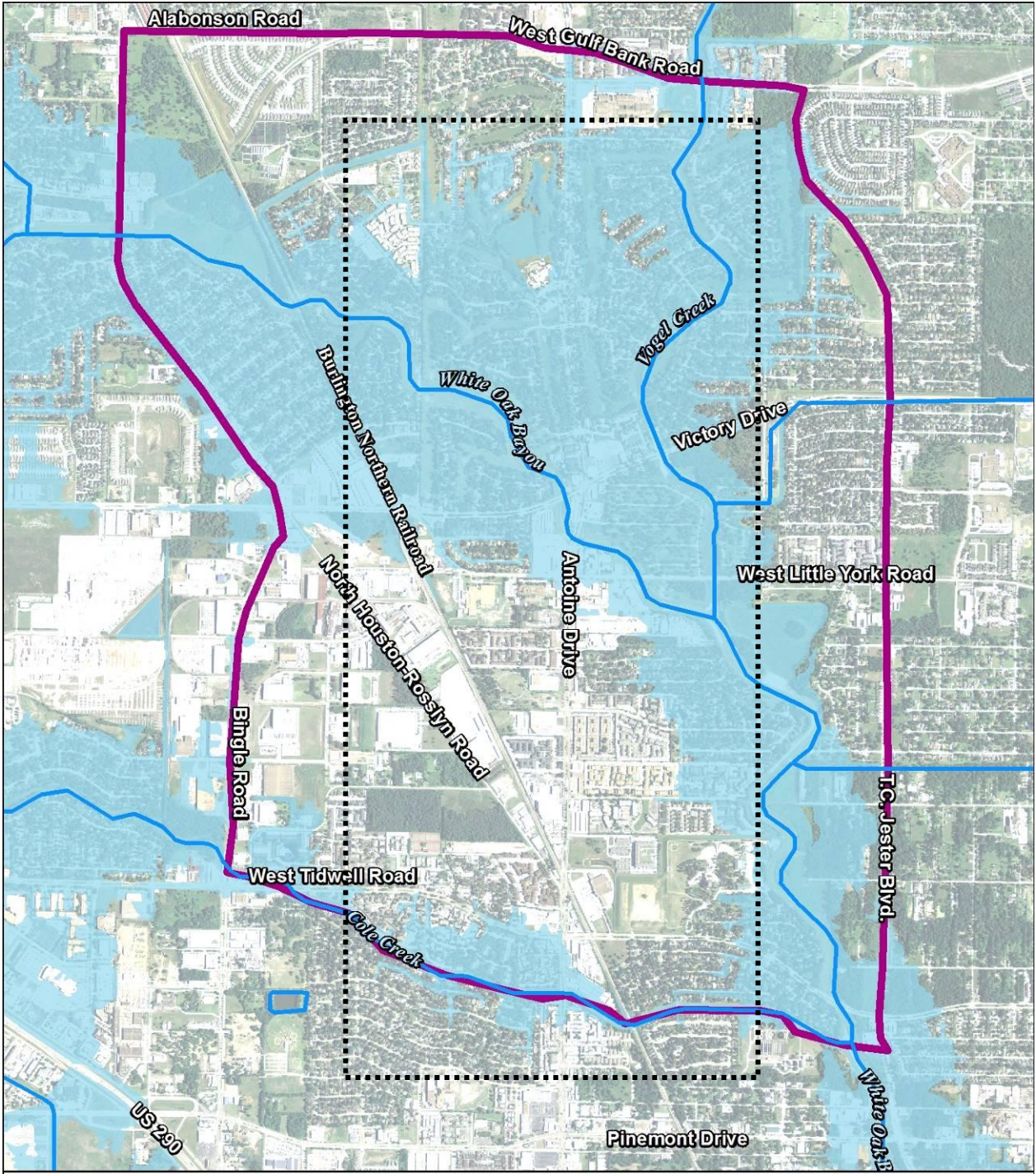
Green Space





Ped/Bike Trails

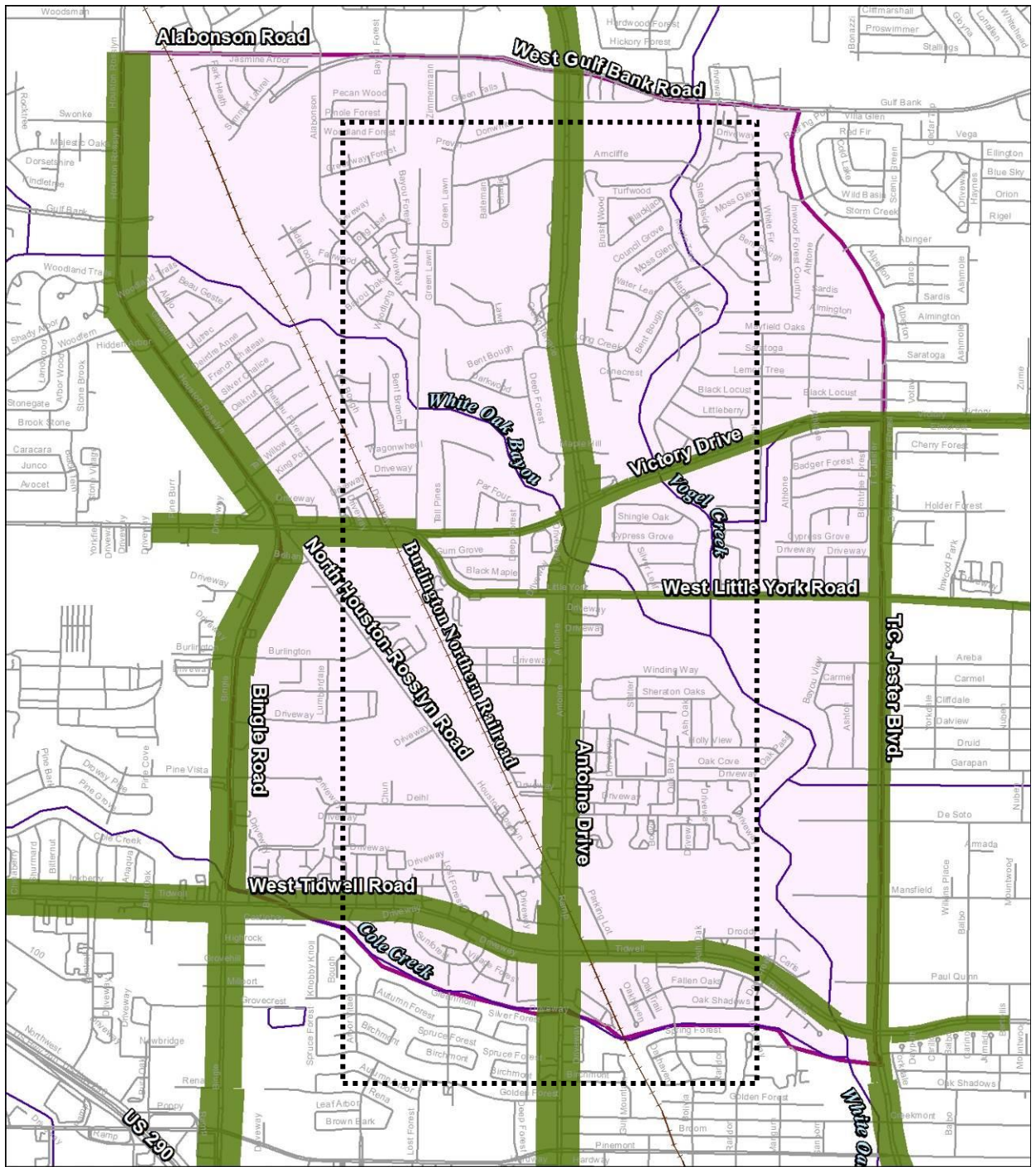




Flood Plain



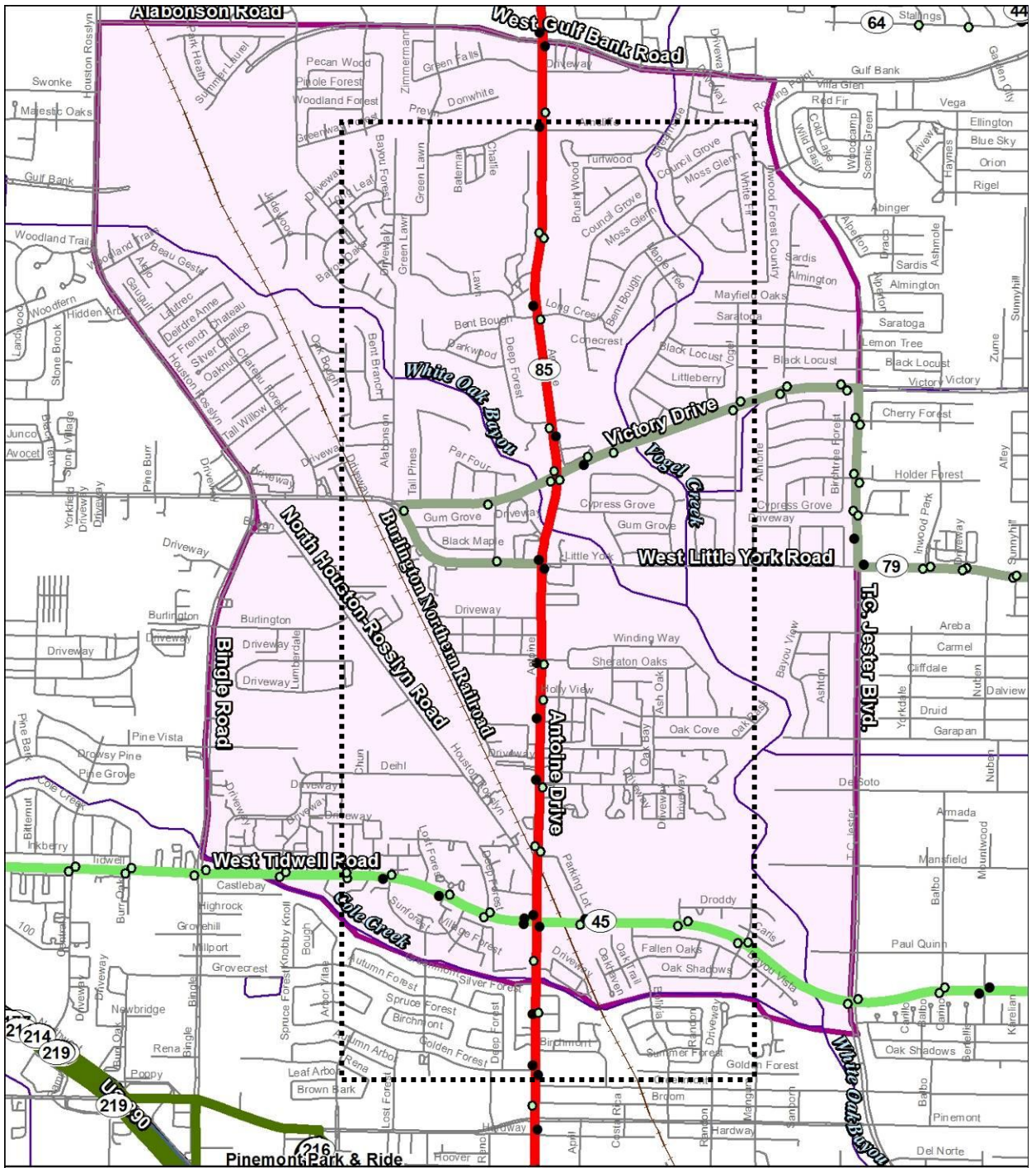
near
northwest
Management District



Traffic Volumes



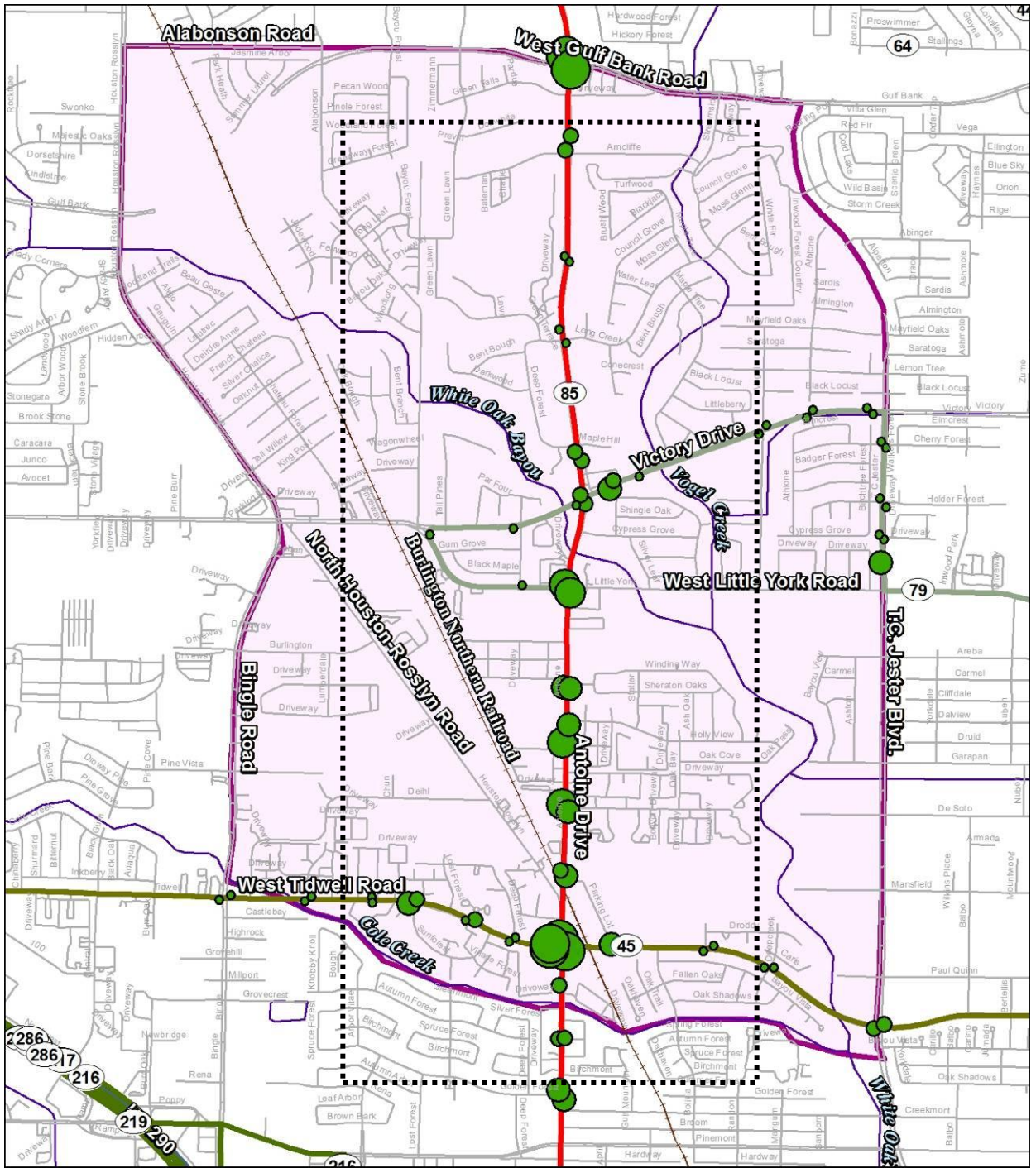
**near
northwest
Management District**



Transit



**near
northwest
Management District**



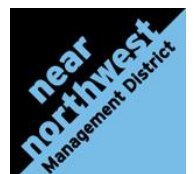
Transit Boardings



**near
northwest
Management District**

Vision Statement

Transform Antoine into a destination intertwined with the waters of White Oak Bayou and Vogel Creek, linked to the heart of Houston by waterside trails, punctuated by unique parks and community gardens, and reborn as a walkable and bikable mixed-use corridor anchored by landmark buildings, lively public spaces and served by enhanced transit.



Redefine our relationship to water

Challenge: Historically, water has been an enemy attacking this area with flooding and requiring extensive repair and rebuilding.

Opportunity: Raise the awareness of water with public spaces and trails that trace it, landmark buildings that leverage investments overlooking it and bridges that celebrate crossing it.

Make parks and gardens a priority

Challenge: This is one of the most underserved areas of Houston in terms of park space.

Opportunity: Transform the area with a series of diverse parks linked in a green network, animated and accented by water.

Create a place that is a destination

Challenge: People have limited reasons to come to this area today.

Opportunity: Create a live, work, learn, visit and play lifestyle and sense of place that will be unique in Houston.

Transforming an auto-centric strip into a street for People

Challenge: Tame traffic and transform the character of a strip dominated by vehicles, pavement and parking.

Opportunity: Transform the street edge with active public spaces and commerce that makes it safer to walk and a place of identity and civic pride.

Leverage strategic location with upgraded transit connections

Challenge: A location with proximity to the airport, Galleria, downtown and other employment areas, but limited and lengthy connectivity.

Opportunity: Establish express service signature bus lines allowing residents to live, walk and ride transit to jobs while reducing traffic and increasing pedestrian activity on Antoine.

Near NorthWest Management District Livable Center

Inwood Forest

White Oak Bayou

Lone Star Campus

Commercial Center

Aron Ledet Park

DeSoto Street Area

Key Branding Gateways



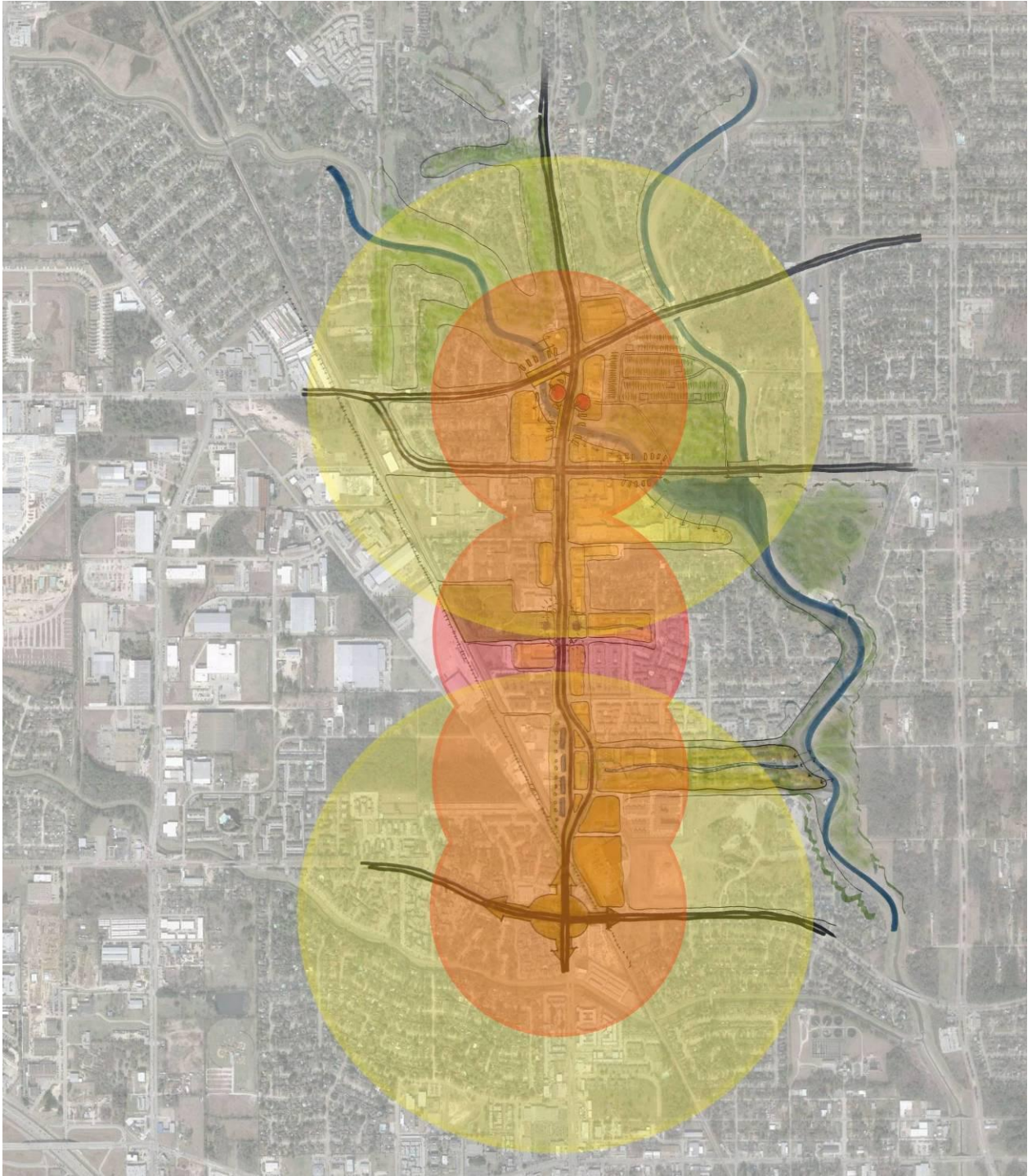
Key Areas of Interest



Key Natural Redevelopment



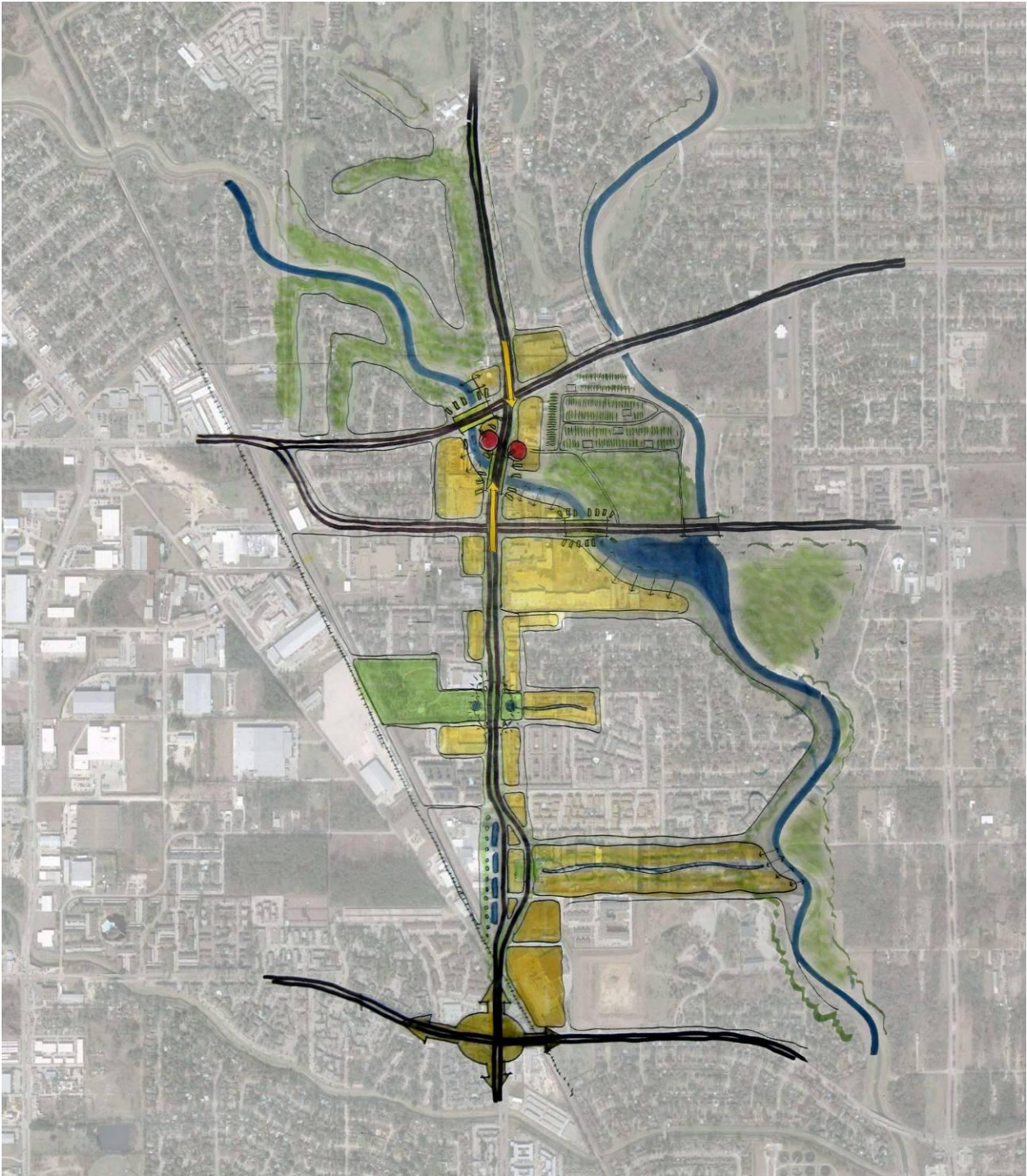
5 and 10 minutes walks



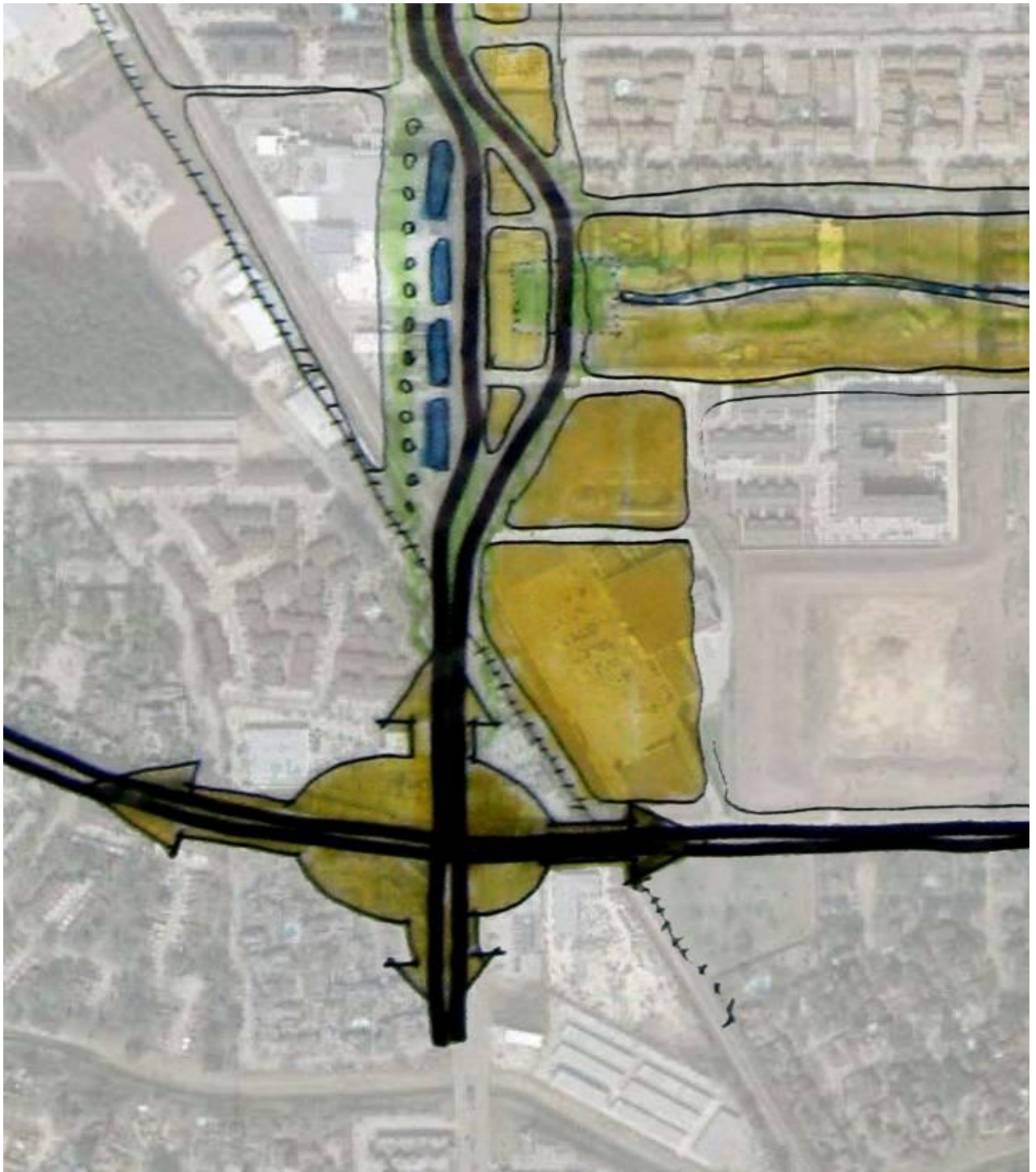
Areas Susceptible to change



Overall Areas of Opportunity

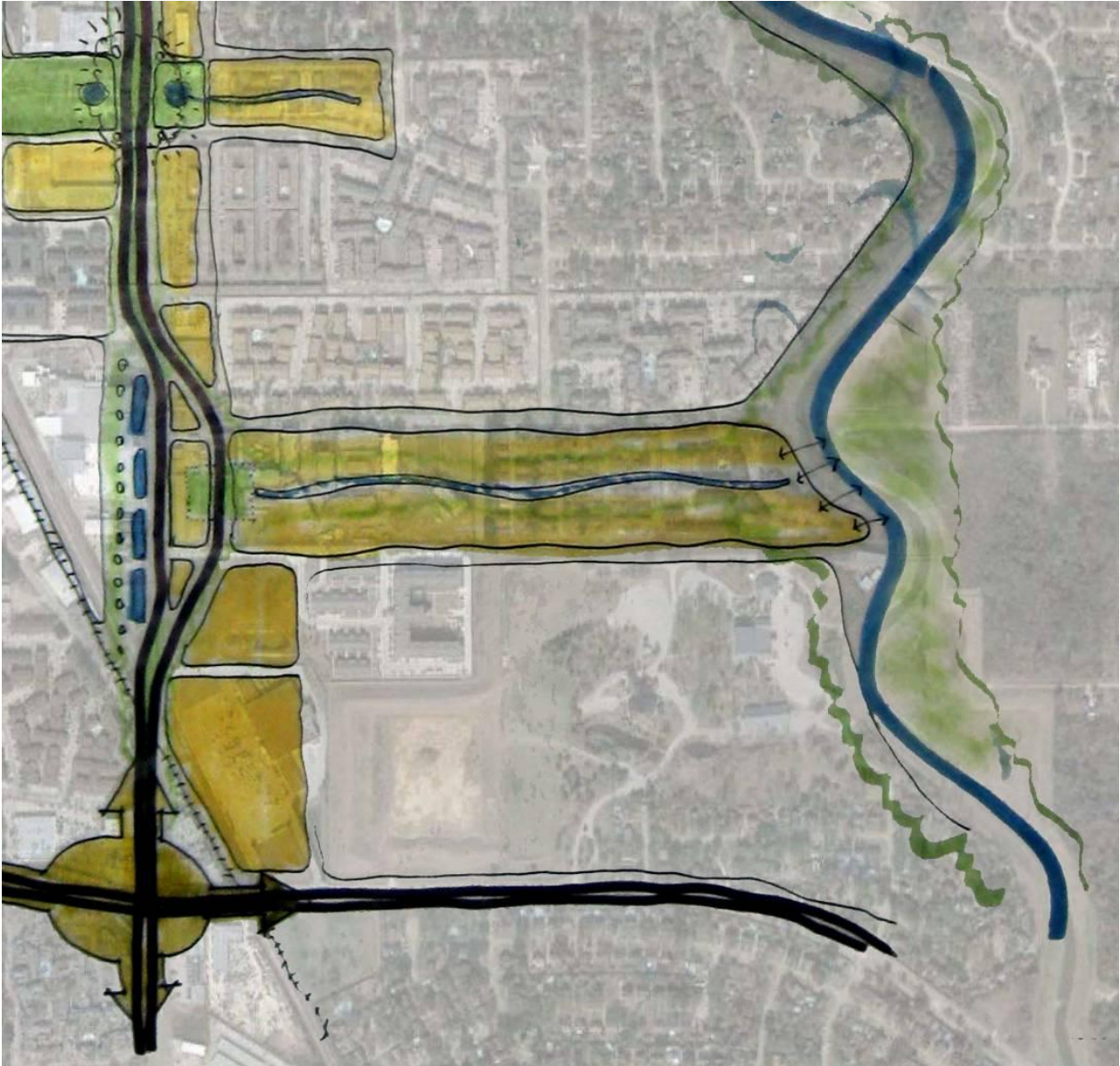


Transit Node @ Antoine and Tidwell





The “De Soto Street Canal” connecting White Oak Bayou to the Antoine Corridor.





HGAC

**near
northwest
Management District**

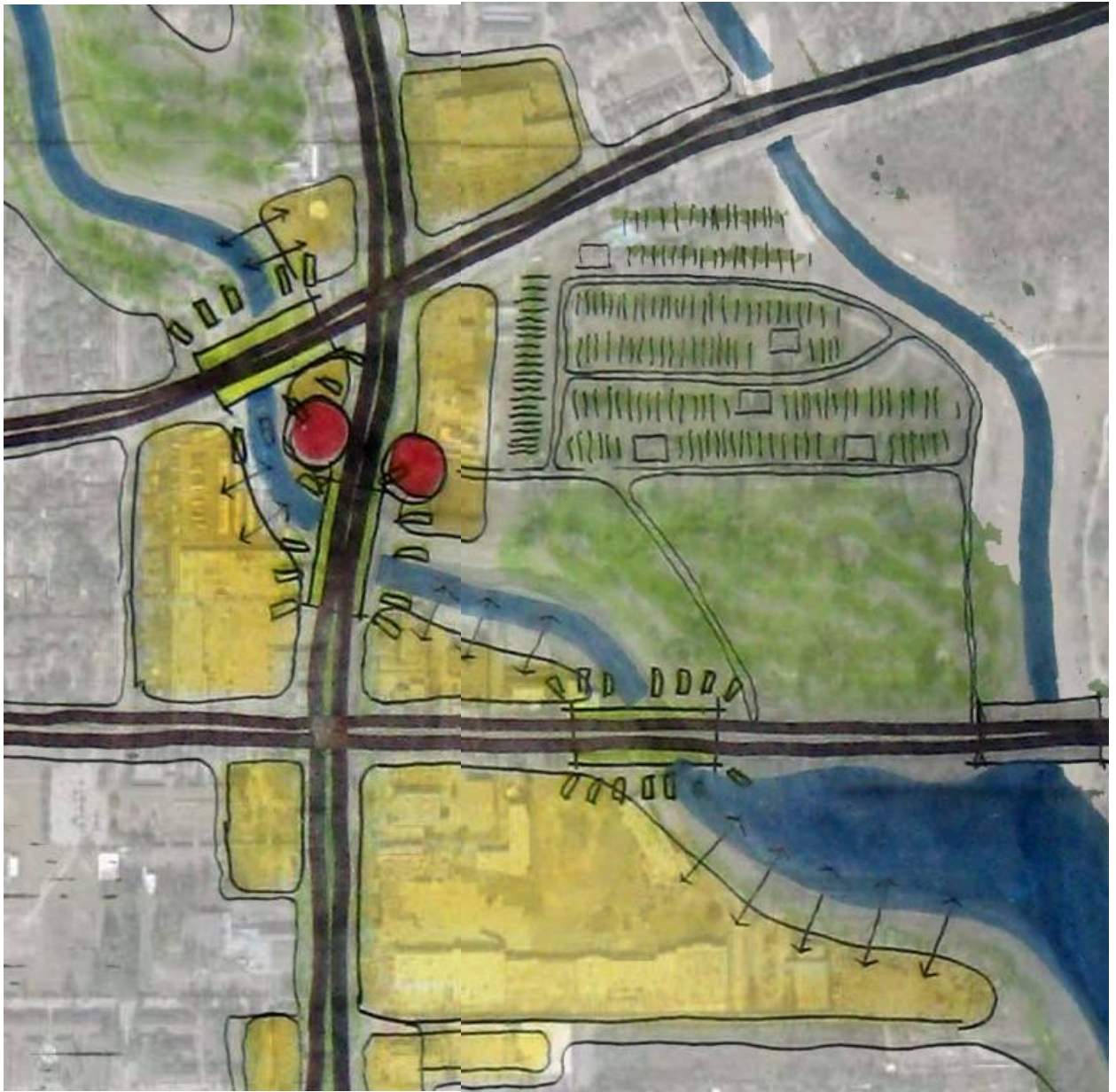


Enhancing Aaron Ledet Park and fully embracing the Antoine Corridor





Embrace the Water, Create Place, Celebrate the Green, Brand the Bridges, and Enhance the Value

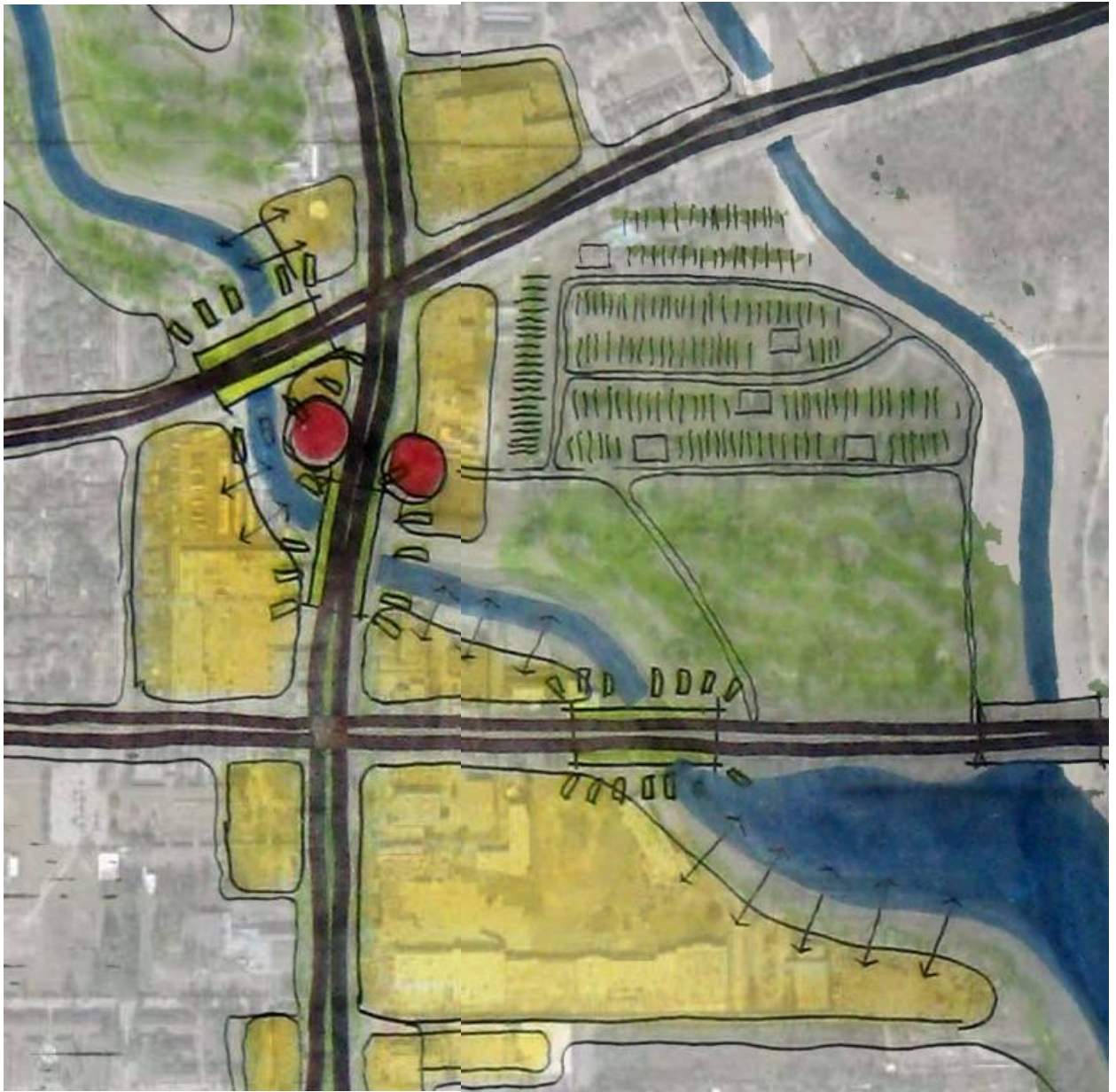




HGAC

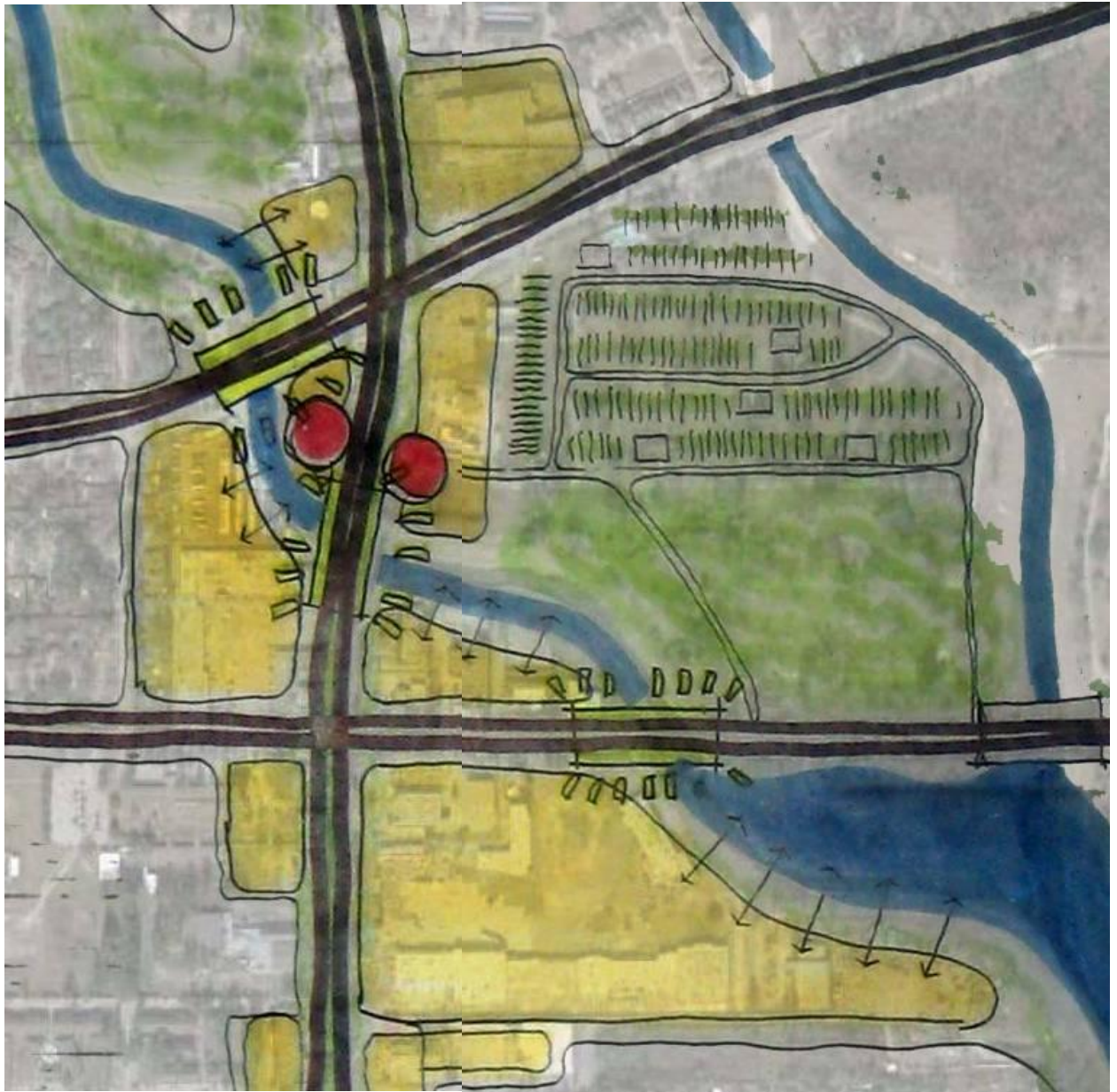
**near
northwest
Management District**

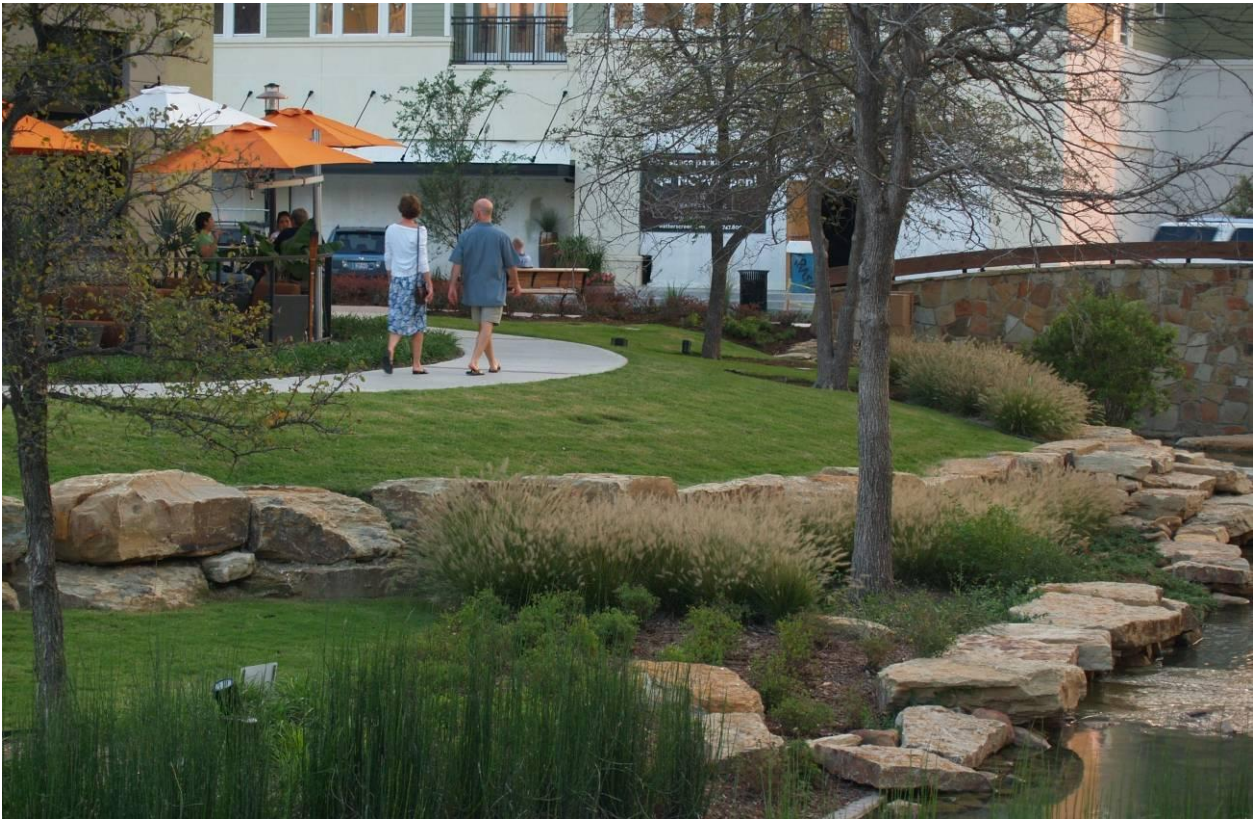
Embrace the Water, Create Place, Celebrate the Green, Brand the Bridges, and Enhance the Value





Embrace the Water, Create Place, Celebrate the Green, Brand the Bridges, and Enhance the Value

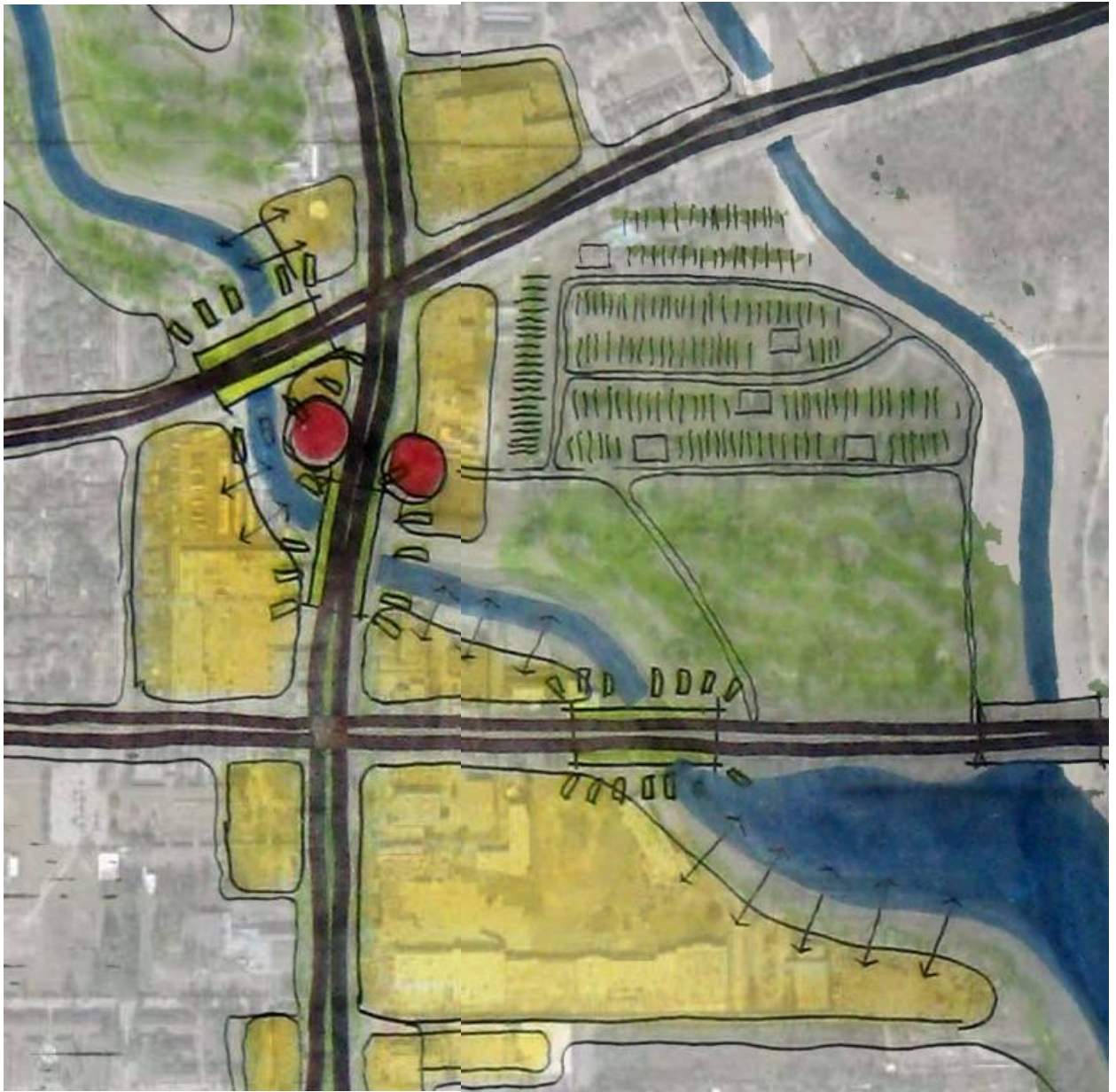




HGAAC

near
northwest
Management District

Embrace the Water, Create Place, Celebrate the Green, Brand the Bridges, and Enhance the Value









Near Northwest Management District

Livable Centers Study Area

Opportunities & Constraints

