

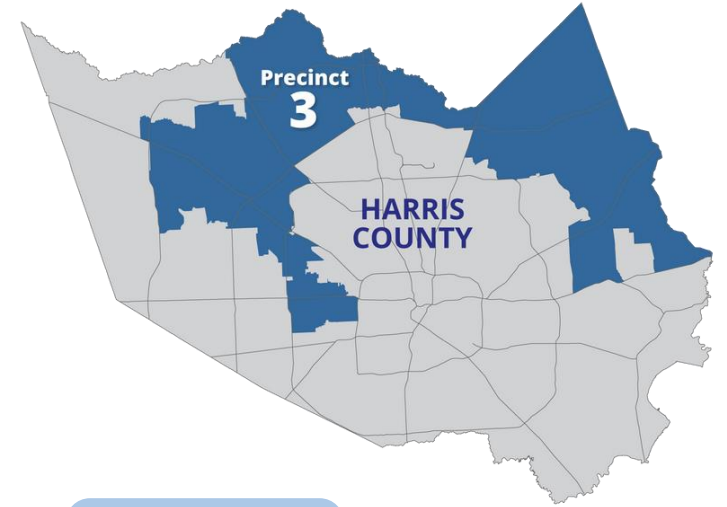


# HARRIS COUNTY PRECINCT 3

Office of Commissioner Tom S. Ramsey, P.E.



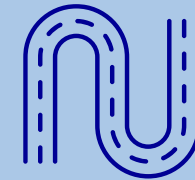
# PRECINCT 3 AT A GLANCE



**555**  
SQUARE MILES



**1.2 mil.**  
RESIDENTS



**6,750**  
ROAD LANE MILES



**72** PARKS



**10** COMMUNITY  
& NATURE  
CENTERS



**19 miles**  
BRIDGES



**TOM S. RAMSEY, P.E.**

HARRIS COUNTY PRECINCT 3 COMMISSIONER

A landscape photograph of rolling hills at sunrise or sunset. The sky is a mix of soft orange, pink, and blue. The hills are covered in grass, with some areas appearing misty or foggy. There are several trees scattered across the landscape, some bare and some with green foliage. The overall mood is serene and hopeful.

Oh the places you'll go

Today is your day. You're off to Great Places! You're off and away! You have brains in your head. You have feet in your shoes. You can steer yourself any direction you choose. You're on your own. And you know what you know. And you will decide where to go.

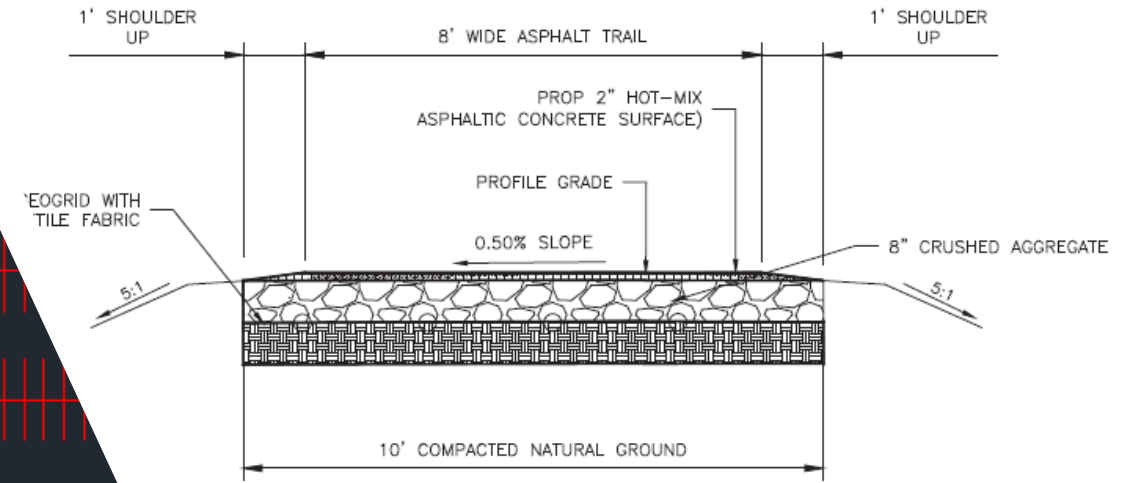
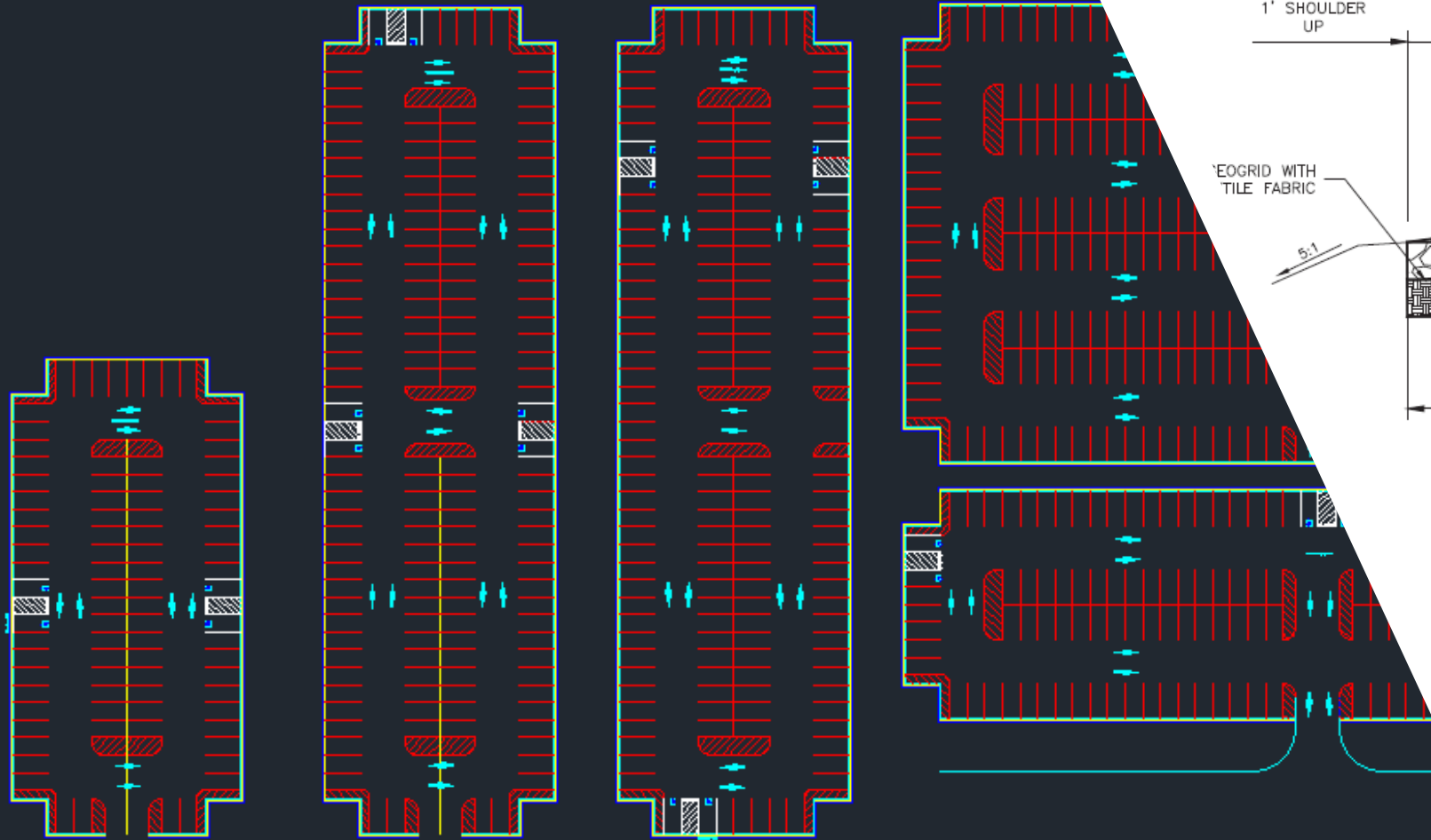
# What goes into the Planning Process?

## Planning Process

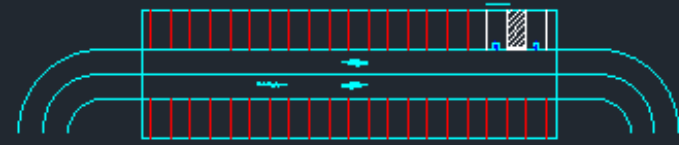
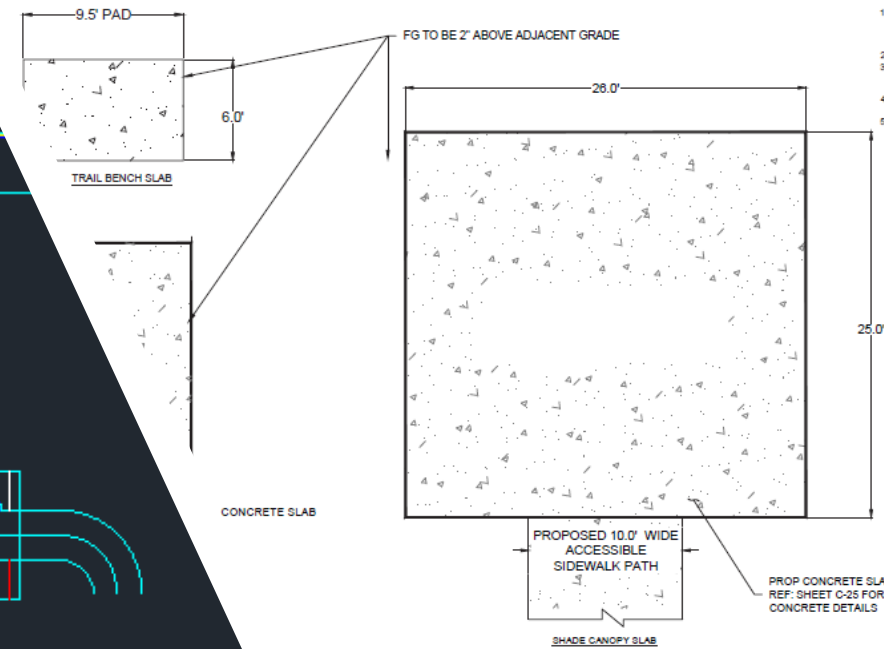
- Mission / Goal
- Collaboration
- Resource Planning & Sequencing
- Pivoting and Forward Thinking

## SWOT Analysis

- Strength
- Weakness
- Opportunity
- Threat



TYPICAL TRAIL SECTION



Know your standards:

- Parking Lots – stall size, amount of spaces, usage
- Trails – Width (8, 10, 12, 12+) and materials
  - Goal of Trail (Loop, Linear, Dirt, ADA compliance)
- Amenities – Water Fountains, Tables, Benches

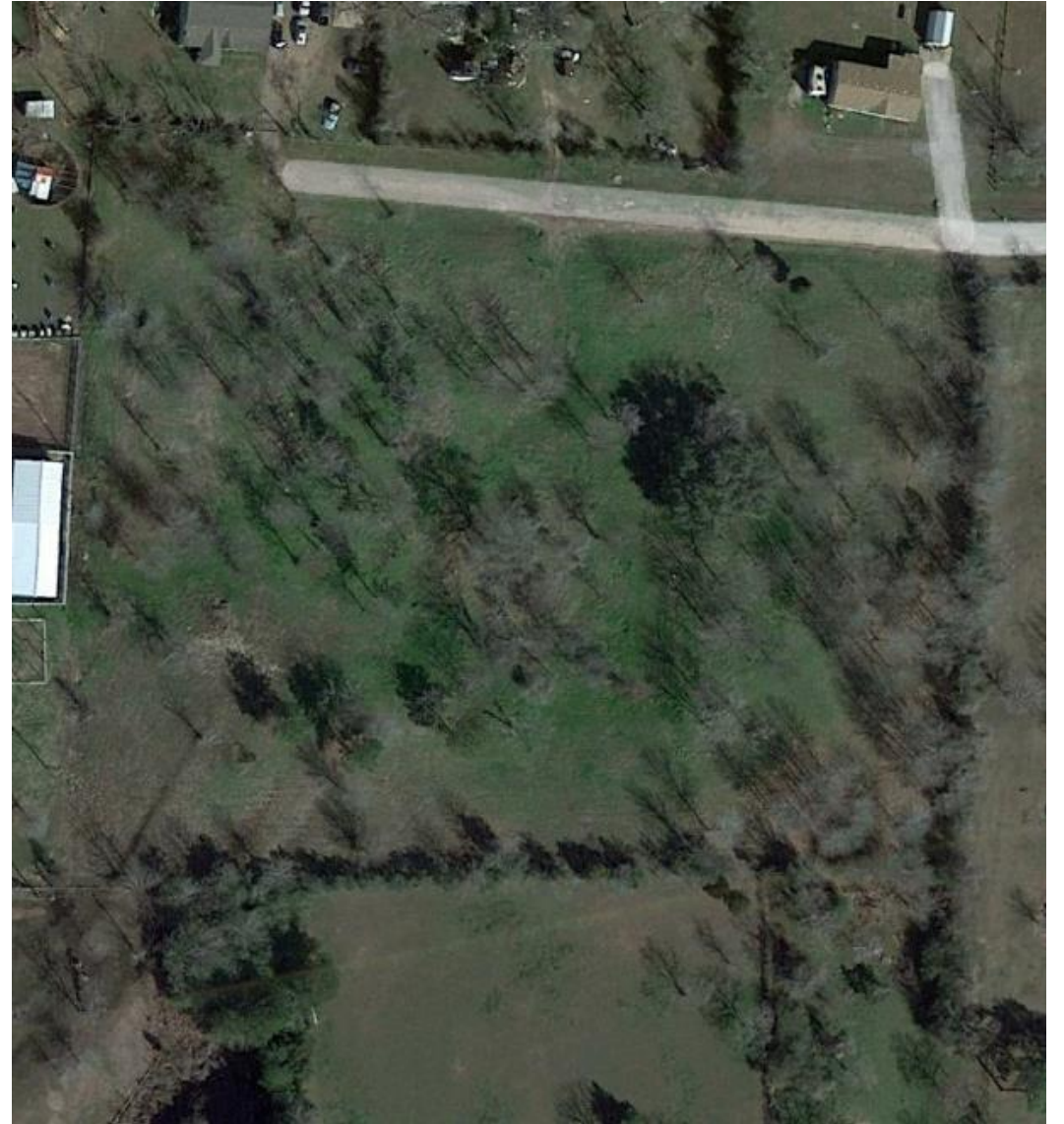


## Binford Circle Park

- Community Needs
- Carving the site



Predevelopment



Selective Clearing

Jun 21, 2019 at 9:02:43 AM



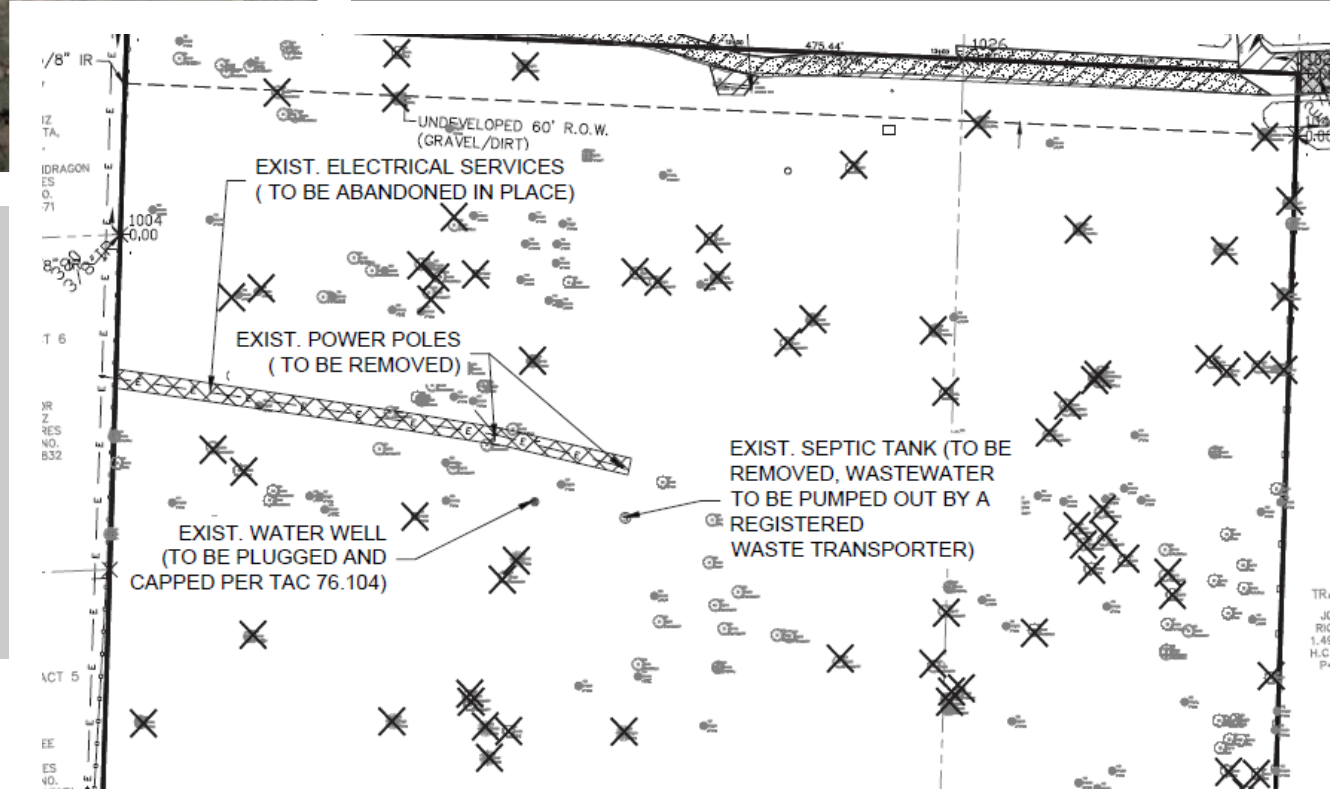
Jun 21, 2019 at 8:23:26 AM  
21527 Binford Cir  
Waller, TX 77484  
United States

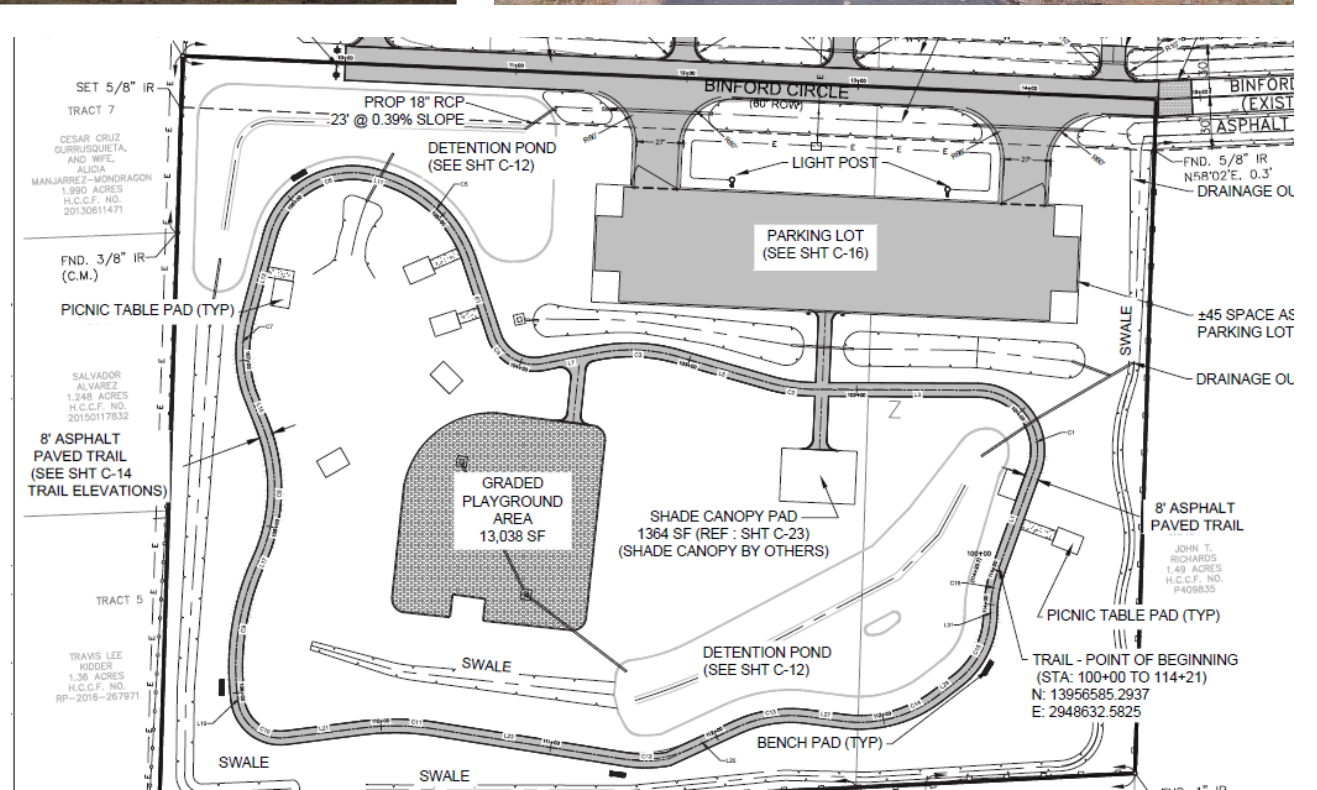
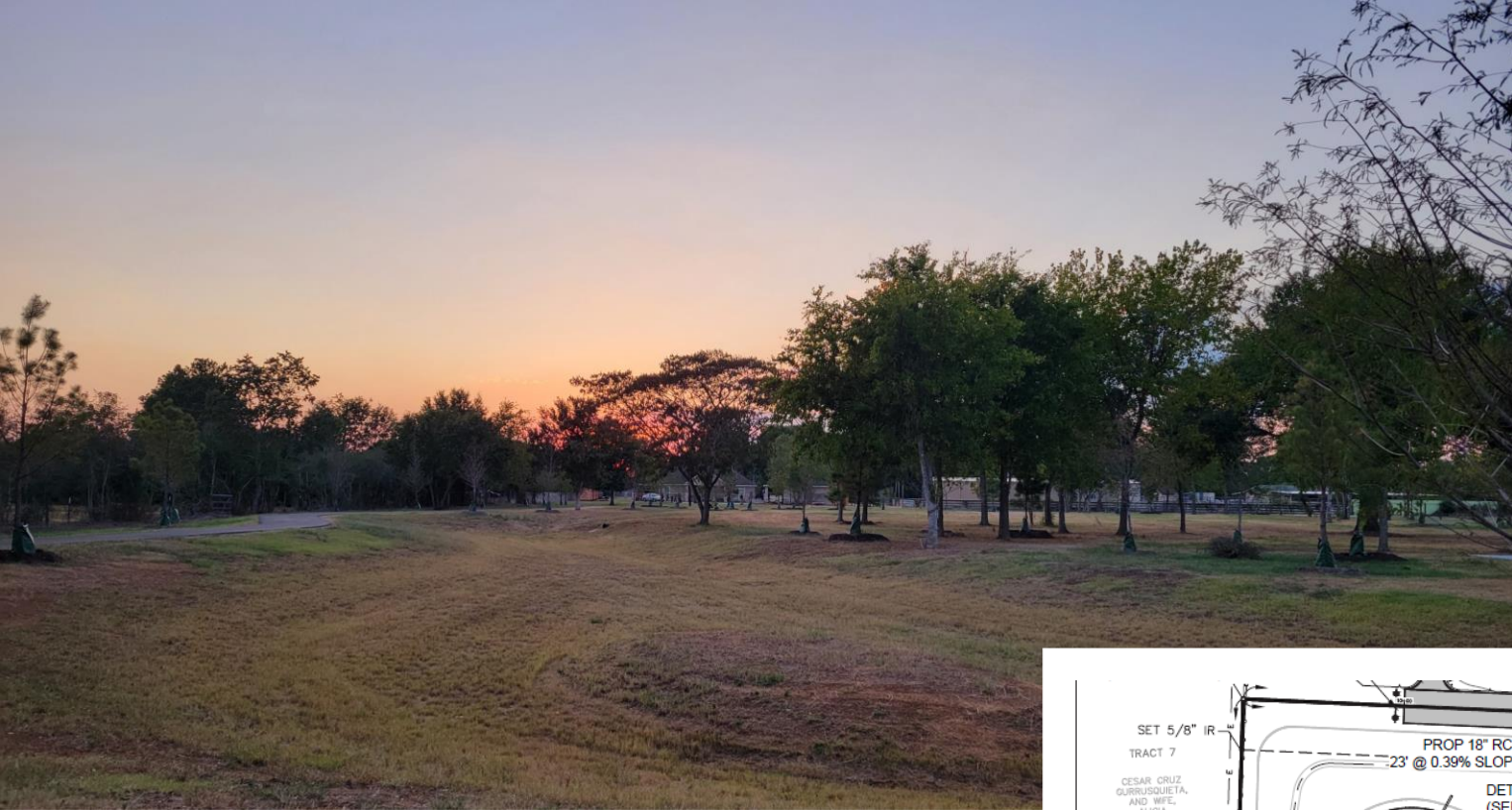


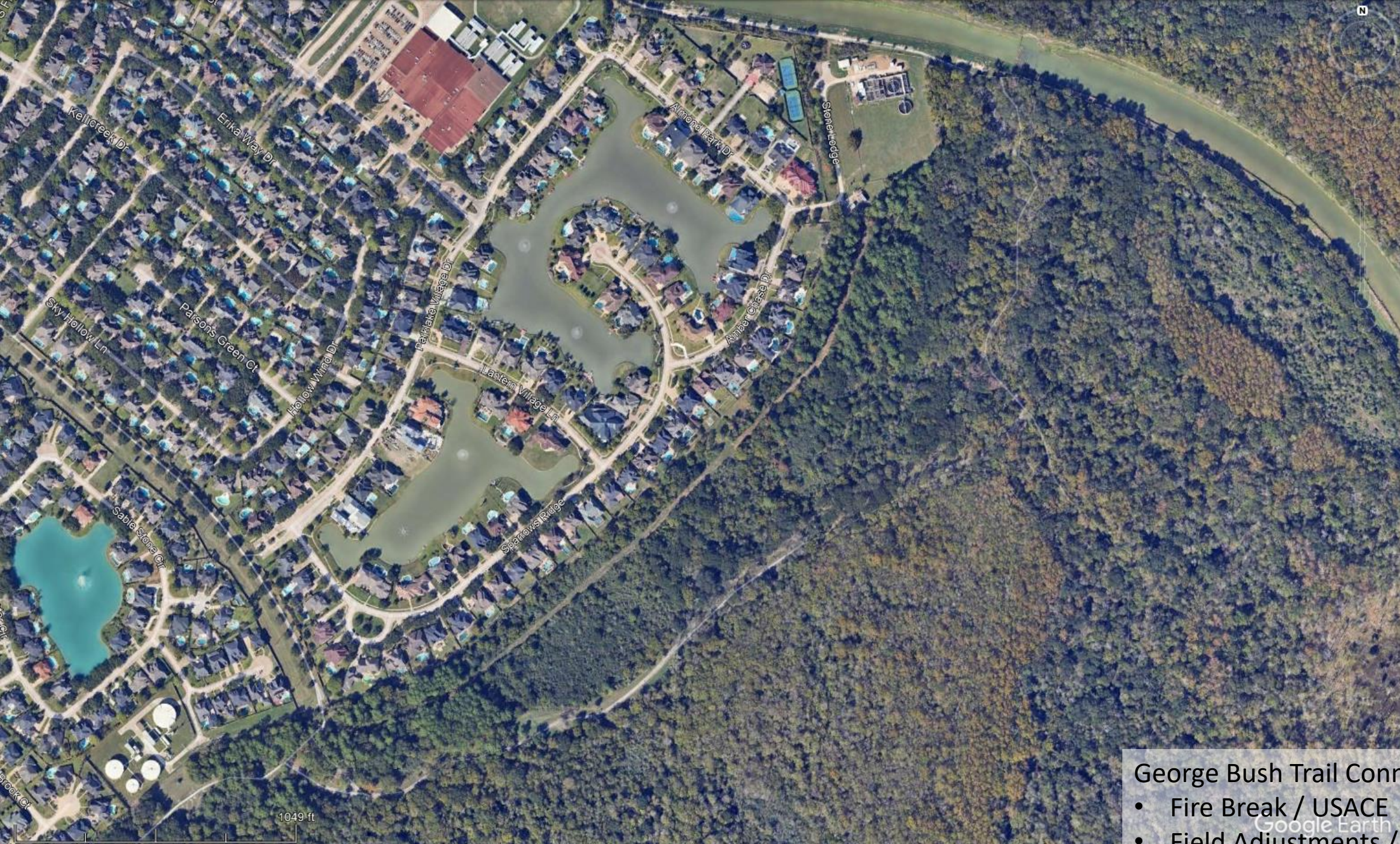
Jun 21, 2019 at 8:25:23 AM  
21527 Binford Cir  
Waller, TX 77484  
United States











Kelticreek Dr

Erika Way Dr

Almond Park Dr

Stoneridge

Sky Hollow Ln

Parsons Green Ct

Parkara Village Dr

Amber Chase Dr

Hollow Wind Dr

Lantern Village Ln

Sable Stone Ct

Sparrows Ridge

1049 ft

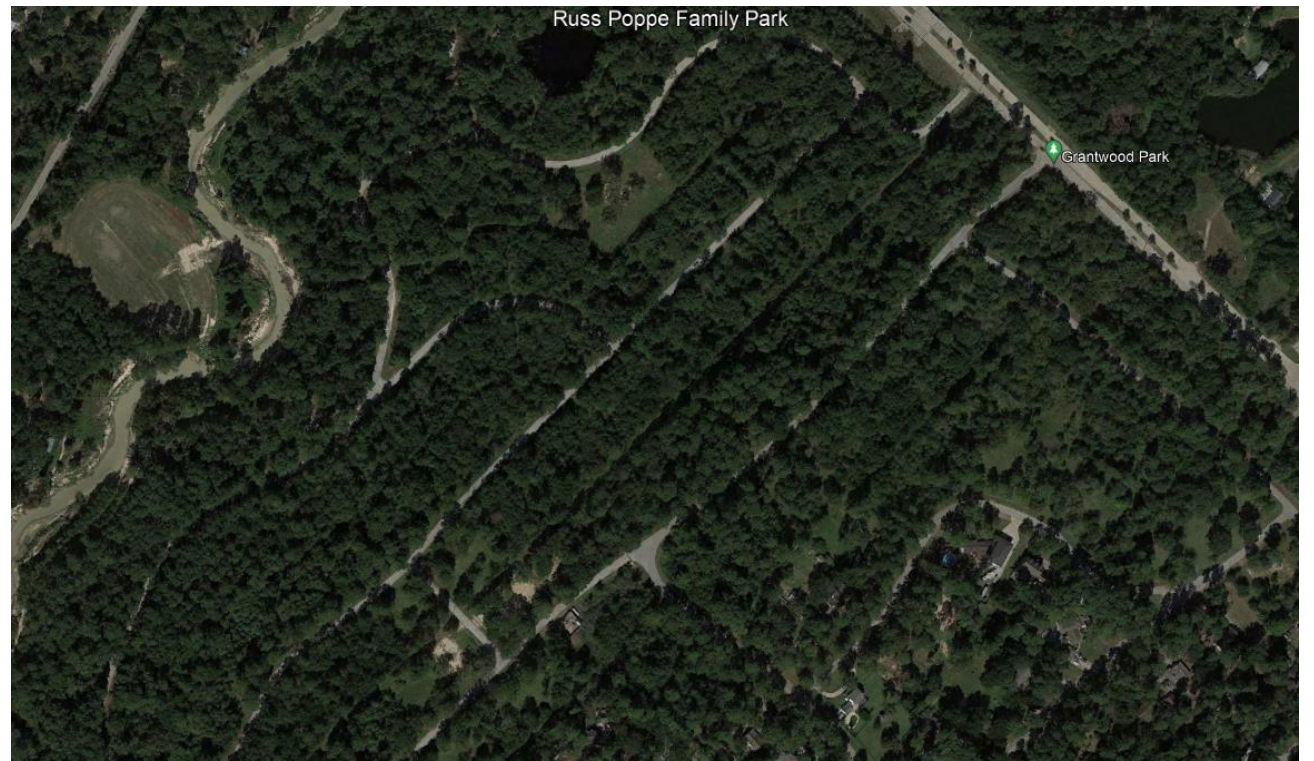
George Bush Trail Connection

- Fire Break / USACE
- Field Adjustments / Planning



**Russ Poppe Family Park**

- Repurposing Land
- Diverse Amenities.



Top Left Image – 1995 – Subdivision fully lived occupied

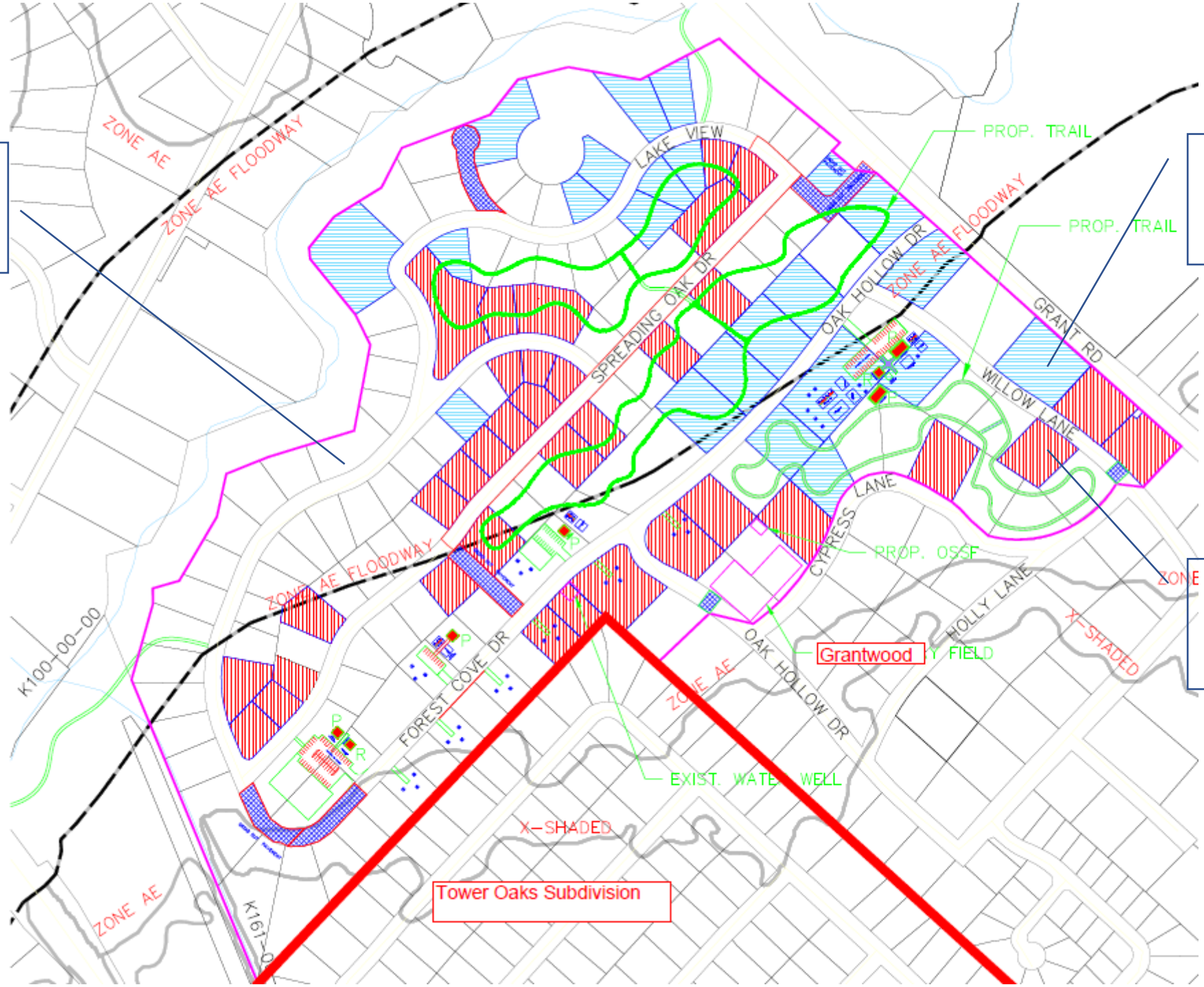
Top Right Image – 2017 – Mostly bought up, flooded by Harvey

Bottom Right – 2017 - Predevelopment

Lot purchased with Local funds

Lot purchased with USACE funds

Lot purchased with FEMA funds



Tower Oaks Subdivision

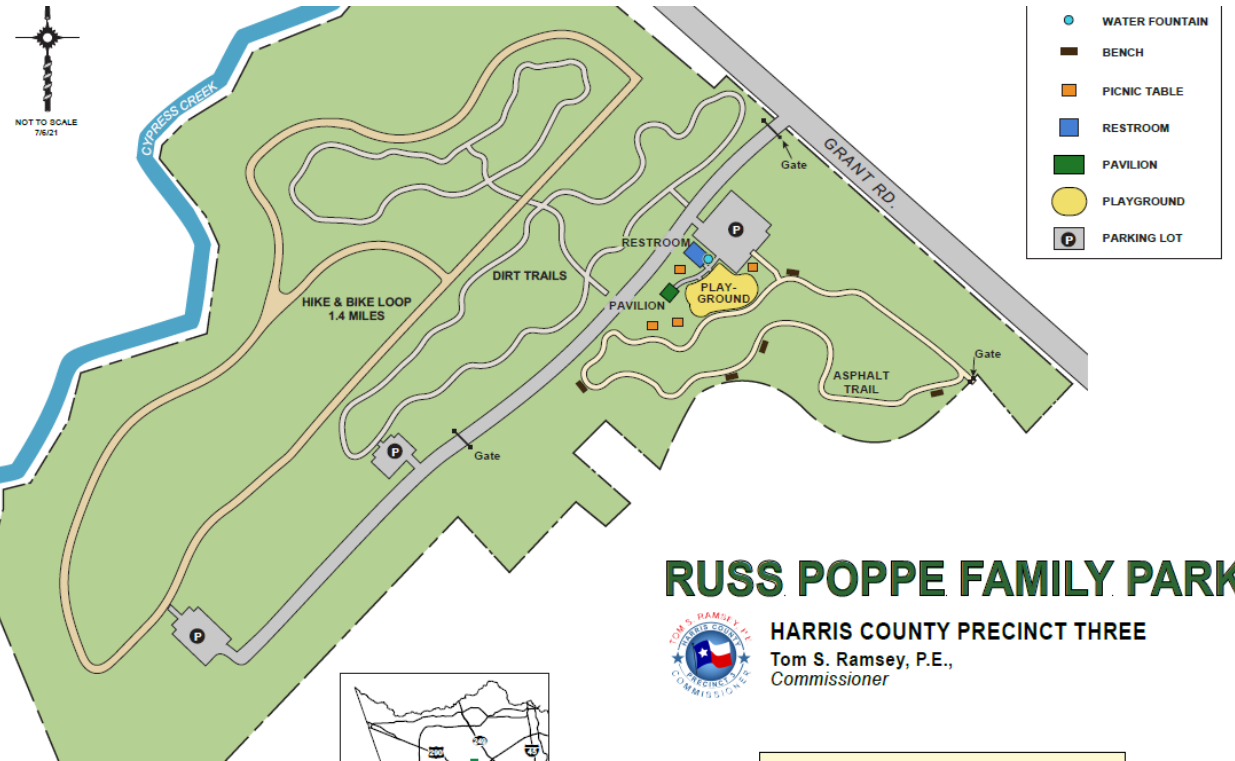


### Goal of Park

- Do Something Different (nearby to Matzke park and Cypress Park)
- Work with the natural resources at hand
- Create flood resilient park

### Different Use Zones

- Southerly Lot - Biking
- Central Lot – Dirt Trail
- Northerly Lot – Playground & Asphalt Trails



## RUSS POPPE FAMILY PARK

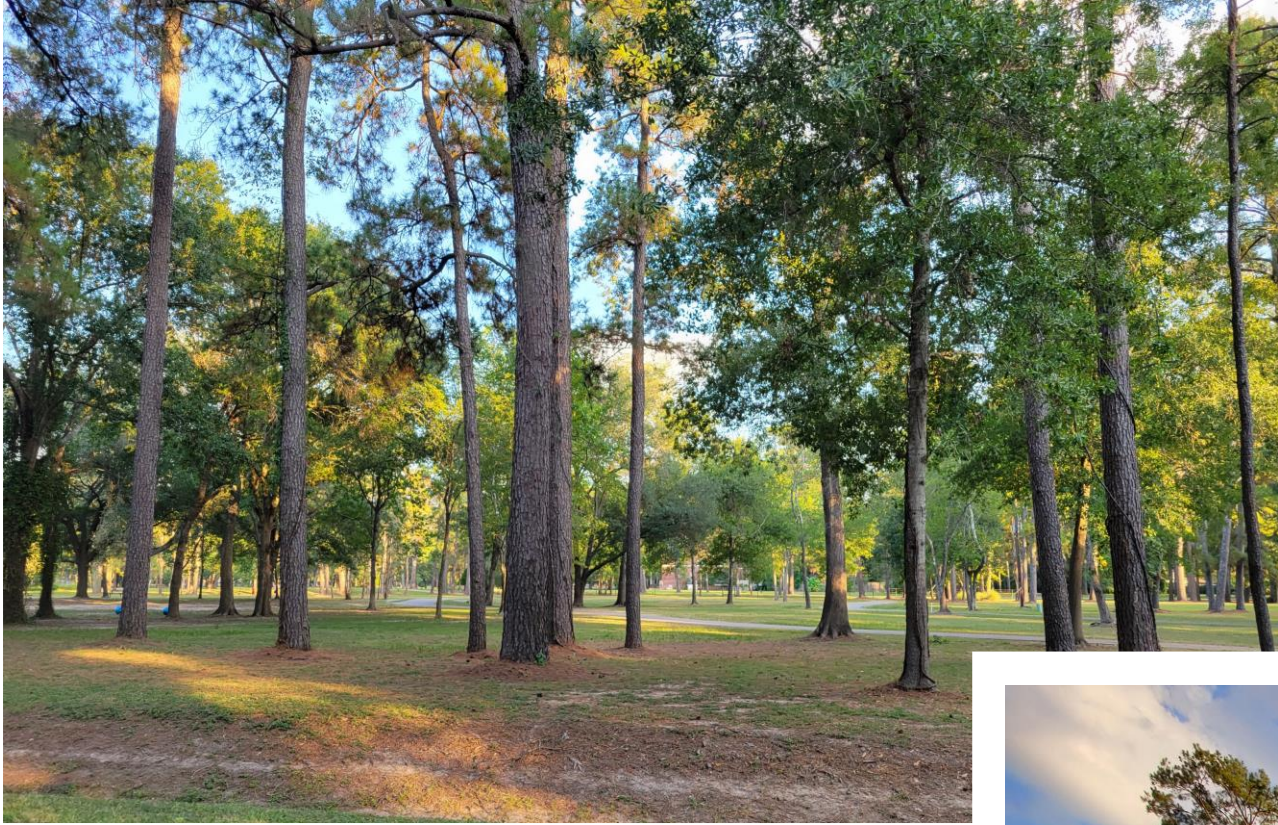


HARRIS COUNTY PRECINCT THREE

Tom S. Ramsey, P.E.,  
Commissioner



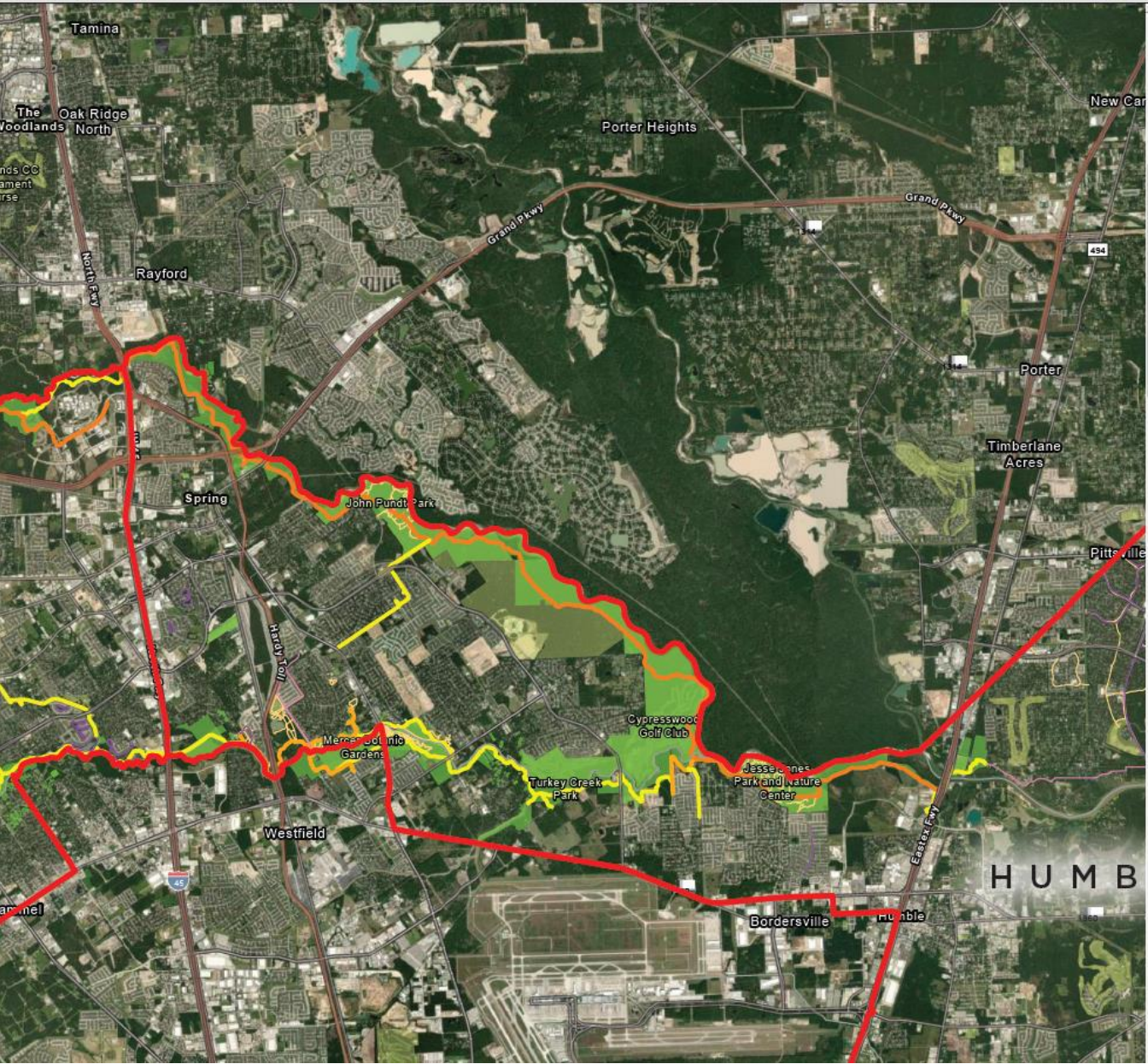


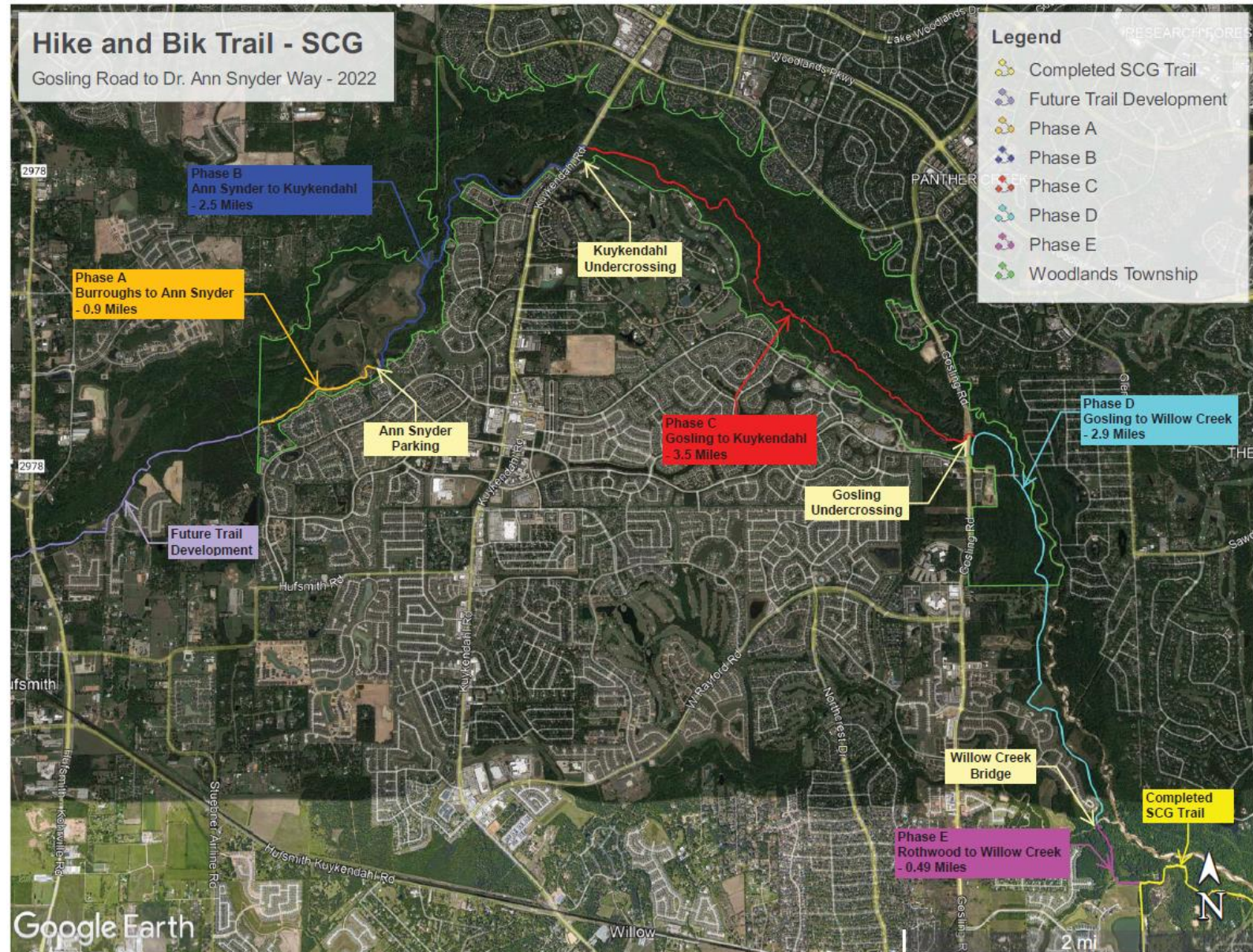
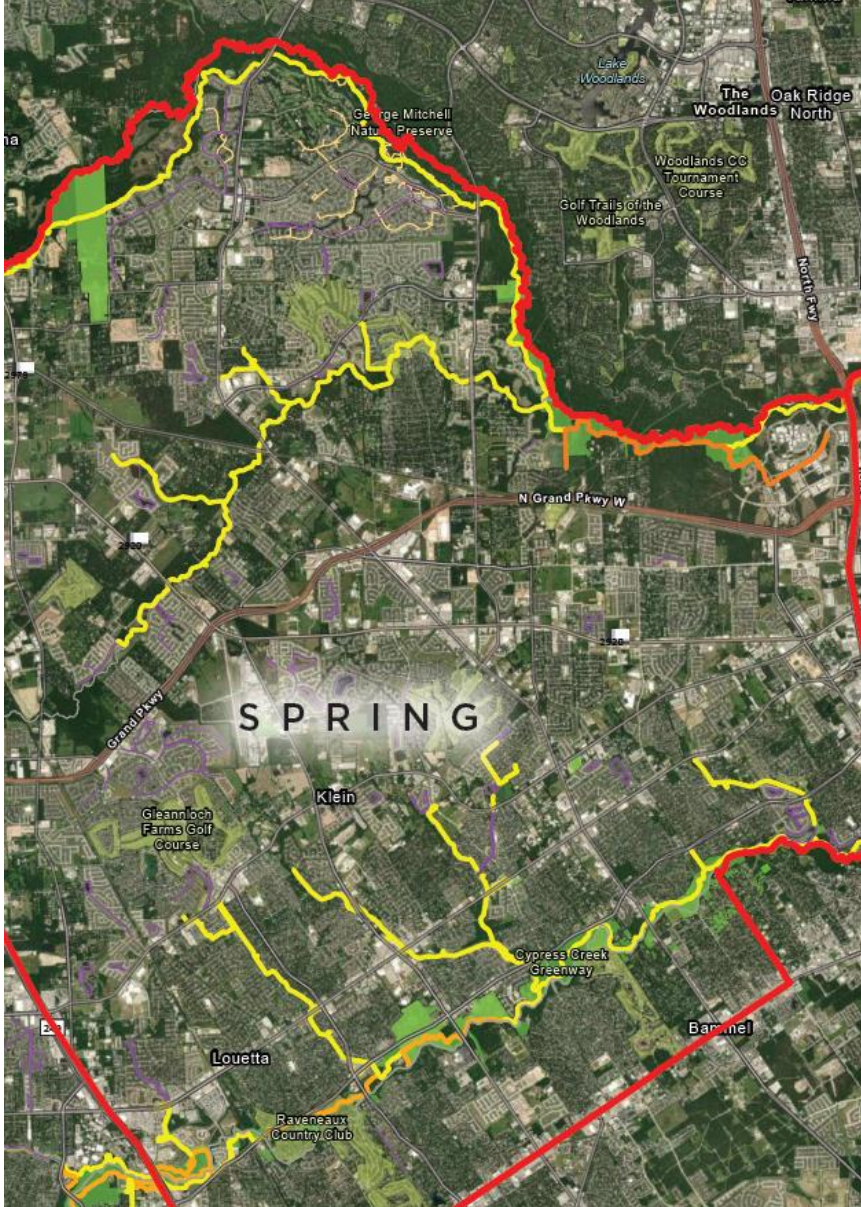




### Spring Creek Greenway

- Size / Logistics
- Maintenance





Dec 7, 2021 at 11:03:05 AM  
Spring TX 77389  
United States  
George Mitchell Nature Preserve



Dec 7, 2021 at 11:03:25 AM  
Spring TX 77389  
United States  
George Mitchell Nature Preserve





Questions ?



Contact Information:  
Eric Heppen  
Harris County Precinct 3  
[Eric.Heppen@Pct3.Hctx.Net](mailto:Eric.Heppen@Pct3.Hctx.Net)  
713-274-3105

So....you're off to Great Places! Today's is your Day!  
Your mountain is waiting. So....get on your way.