

## APPENDIX B – CHANGES TO PREVIOUS BCTP

1. Maps documenting changes to the previous BCTP



# Brazoria County Thoroughfare Plan: CHANGES TO PREVIOUS THOROUGHFARE PLAN

## Legend

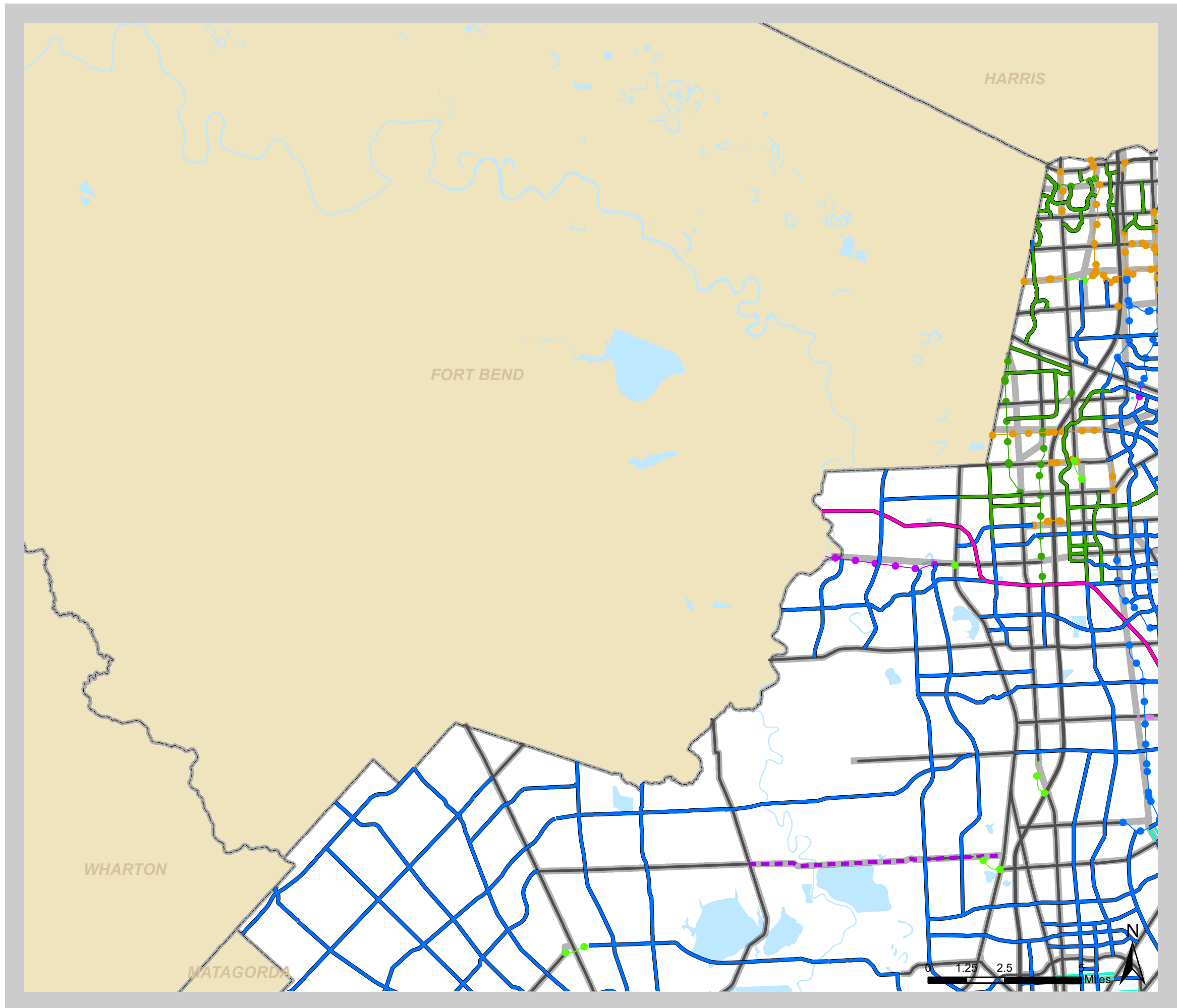
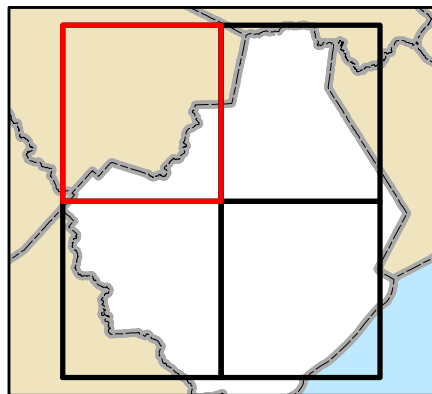
- Previous Thoroughfare Plan
- No change

## Change (line style)

- Addition
- Deletion
- Realignment
- Reclassification

## Reason for Change (color of line)

- Additional connectivity
- Local connections
- Identified through coordination with cities
- Revised geometry
- Avoid existing barriers
- TxDOT plans; need additional study
- Other alignments better serve the region
- Utilize existing roadways





# Brazoria County Thoroughfare Plan: CHANGES TO PREVIOUS THOROUGHFARE PLAN

## Legend

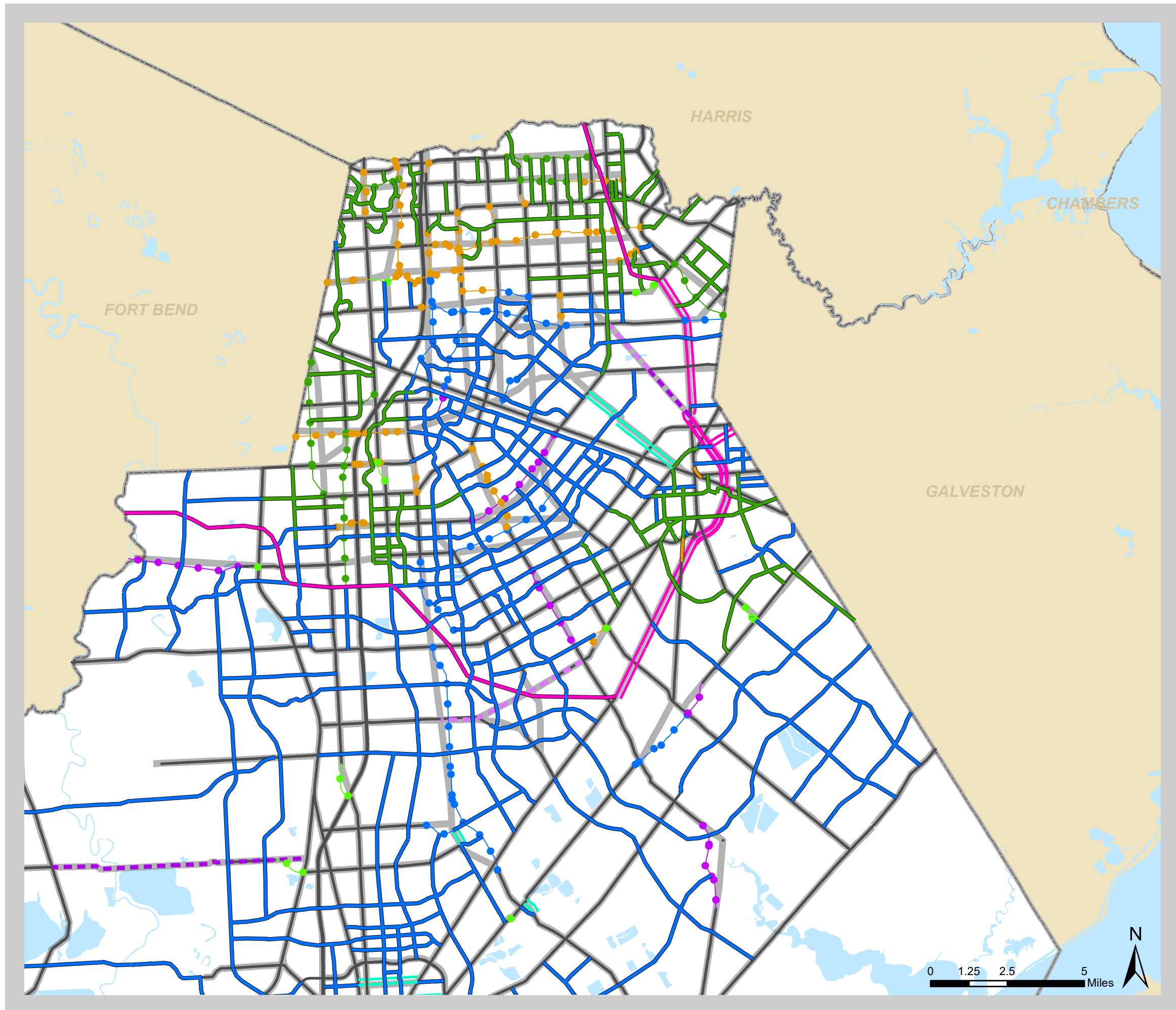
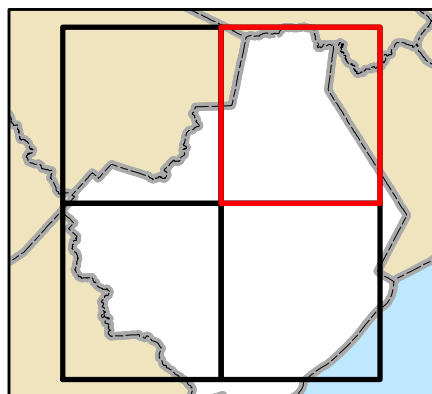
- Previous Thoroughfare Plan
- No change

## Change (line style)

- Addition
- Deletion
- Realignment
- Reclassification

## Reason for Change (color of line)

- Additional connectivity
- Local connections
- Identified through coordination with cities
- Revised geometry
- Avoid existing barriers
- TxDOT plans; need additional study
- Other alignments better serve the region
- Utilize existing roadways





# Brazoria County Thoroughfare Plan: CHANGES TO PREVIOUS THOROUGHFARE PLAN

## Legend

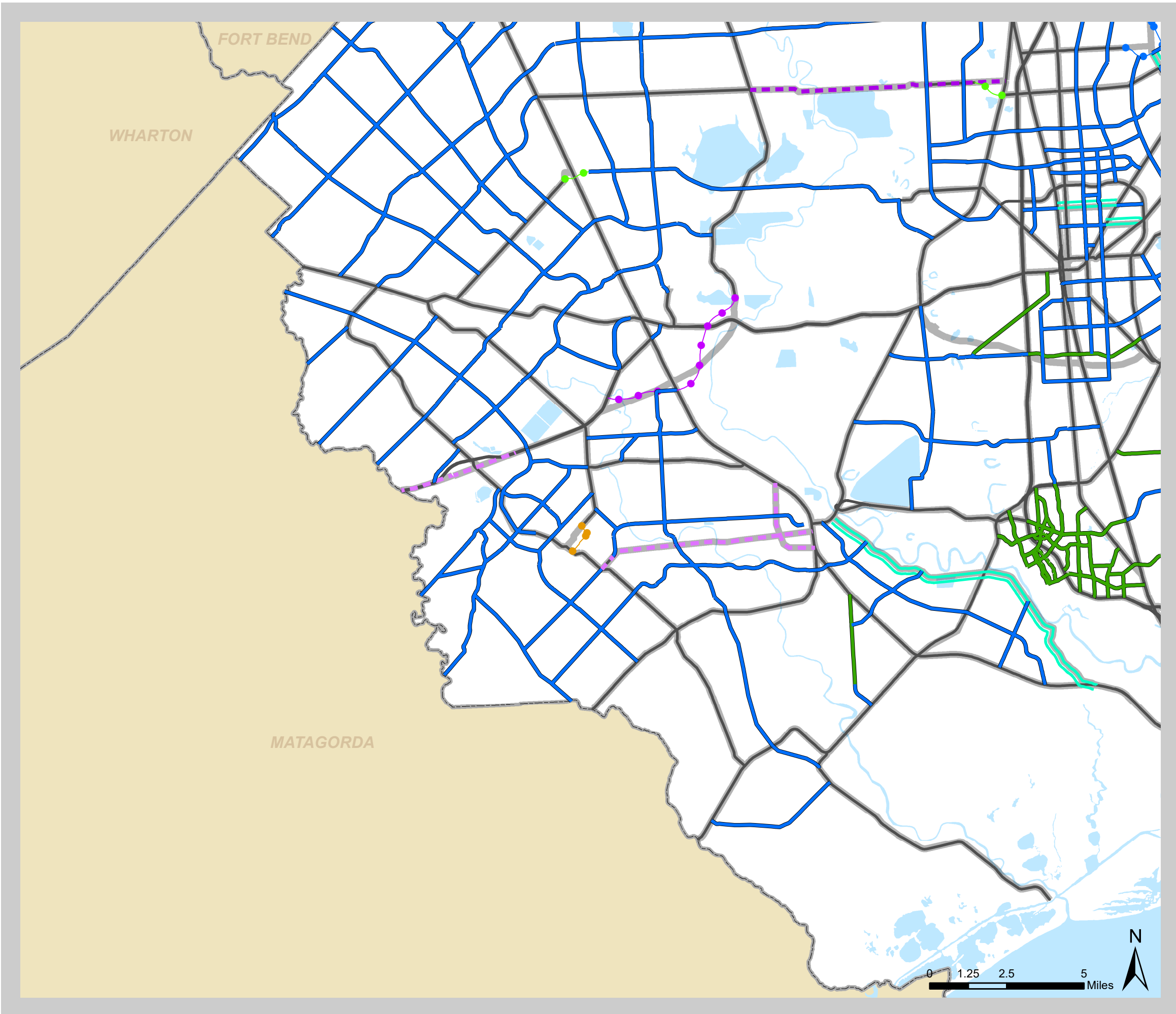
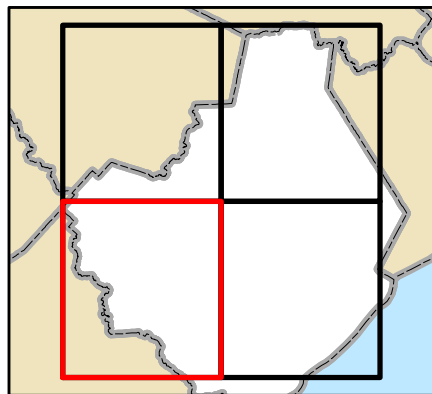
- Previous Thoroughfare Plan
- No change

## Change (line style)

- Addition
- Deletion
- Realignment
- Reclassification

## Reason for Change (color of line)

- Additional connectivity
- Local connections
- Identified through coordination with cities
- Revised geometry
- Avoid existing barriers
- TxDOT plans; need additional study
- Other alignments better serve the region
- Utilize existing roadways







# Brazoria County Thoroughfare Plan: CHANGES TO PREVIOUS THOROUGHFARE PLAN

## Legend

- Previous Thoroughfare Plan
- No change

## Change (line style)

- Addition
- Deletion
- Realignment
- Reclassification

## Reason for Change (color of line)

- Additional connectivity
- Local connections
- Identified through coordination with cities
- Revised geometry
- Avoid existing barriers
- TxDOT plans; need additional study
- Other alignments better serve the region
- Utilize existing roadways

