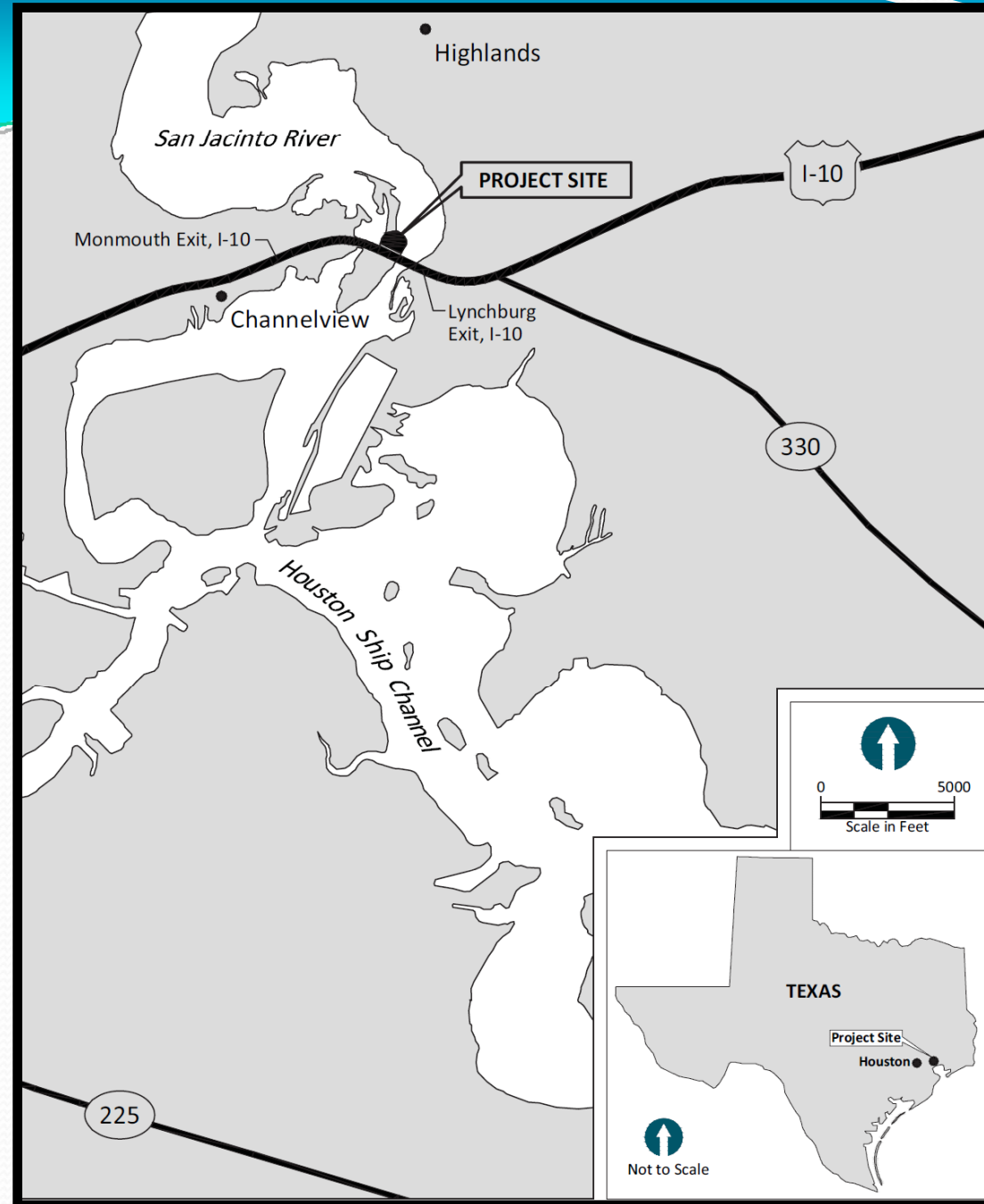




San Jacinto River Waste Pits Superfund Site

November 15, 2012



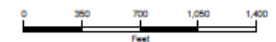
San Jacinto River Waste Pits Superfund Site

● ≤ 50 ppt TEQ Dioxin/Furan

San Jacinto River Waste Pits

August 2011 Residential Soil
Samples for Dioxin
and Furan Analysis

- Sample Location
- Zero Ft. Contour
- Northern Impoundment
- Southern Impoundment
- 100 Yr. Floodplain

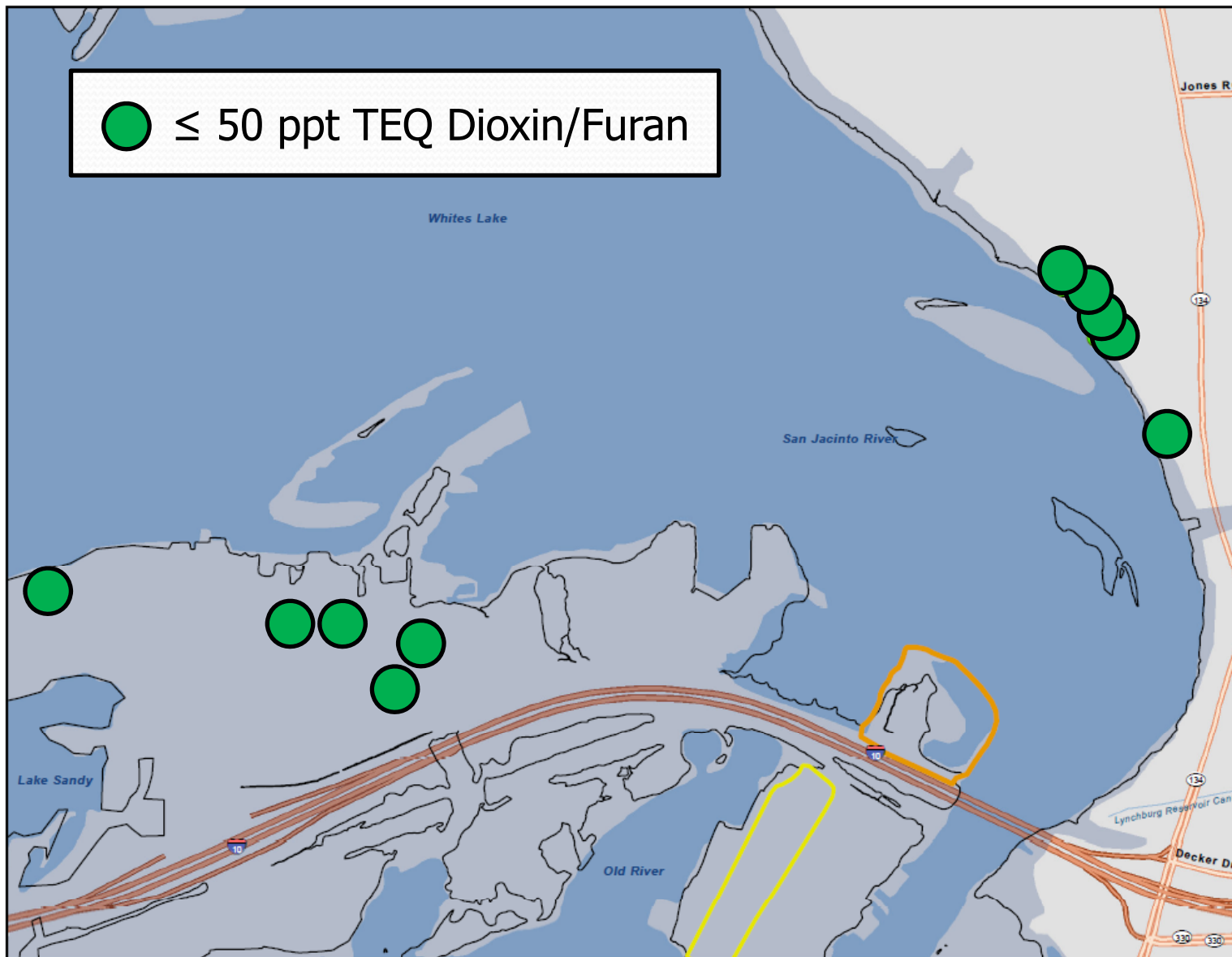


Sources:
Sample Locations: Anchor QEA
Zero Ft. Contour: Anchor QEA
Impoundment Perimeters: EPA Region 6
100 Yr. Floodplain: Anchor QEA
Background Roads: ESRI Streetmap

EPA makes no claims as to the
accuracy of the data or its suitability
for any particular use.





Map created: September 19, 2011

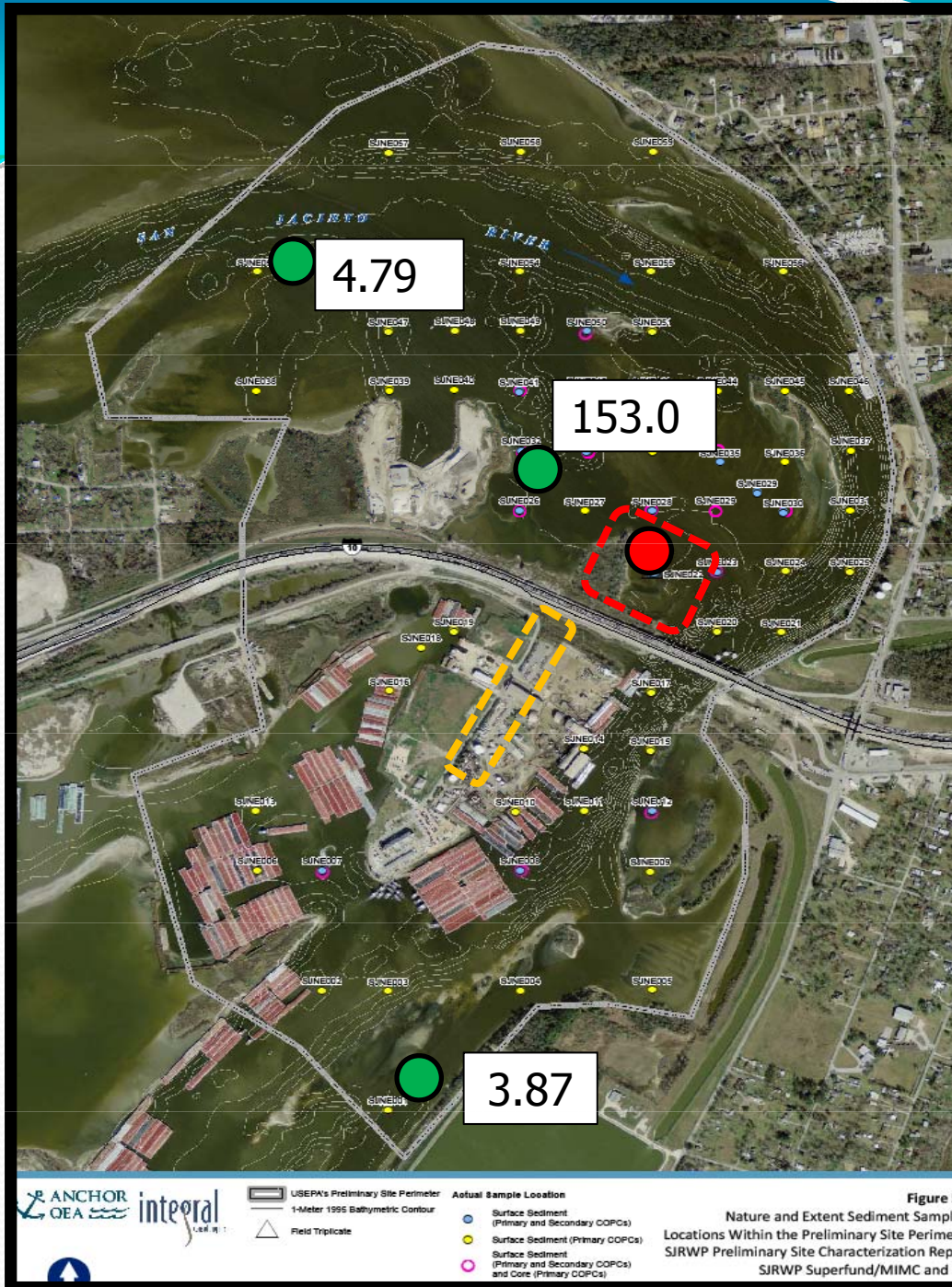
 EPA Region 6
Superfund Division
Dallas, Texas
20110919BG01



San Jacinto River Waste Pits Superfund Site




240 River sediment samples within preliminary site boundary.

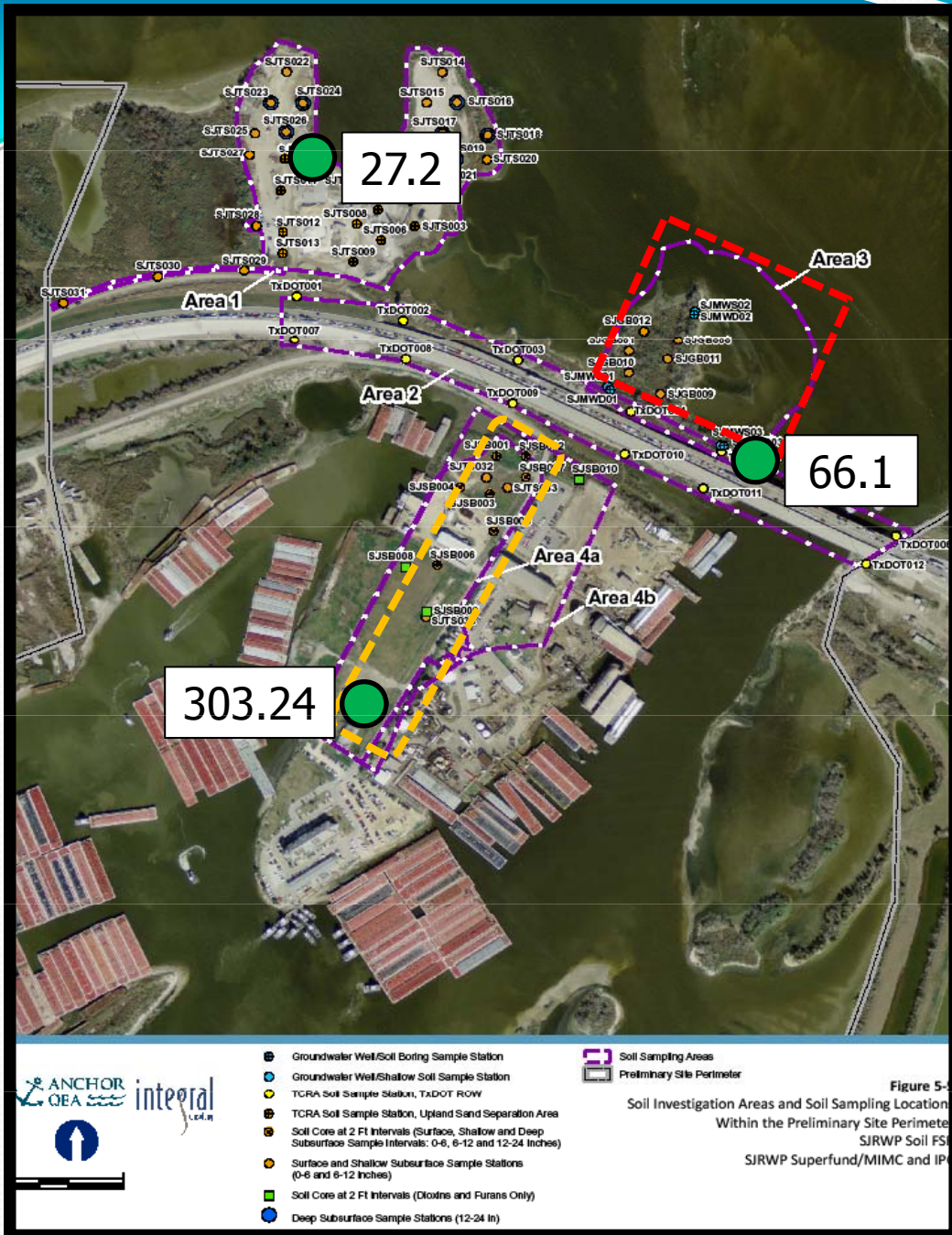
-  Waste Pits
-  Southern Impoundment
-  31,600 ng/kg TEQ_{DF} Dioxin
-  Sediment - ng/kg TEQ_{DF} Dioxin

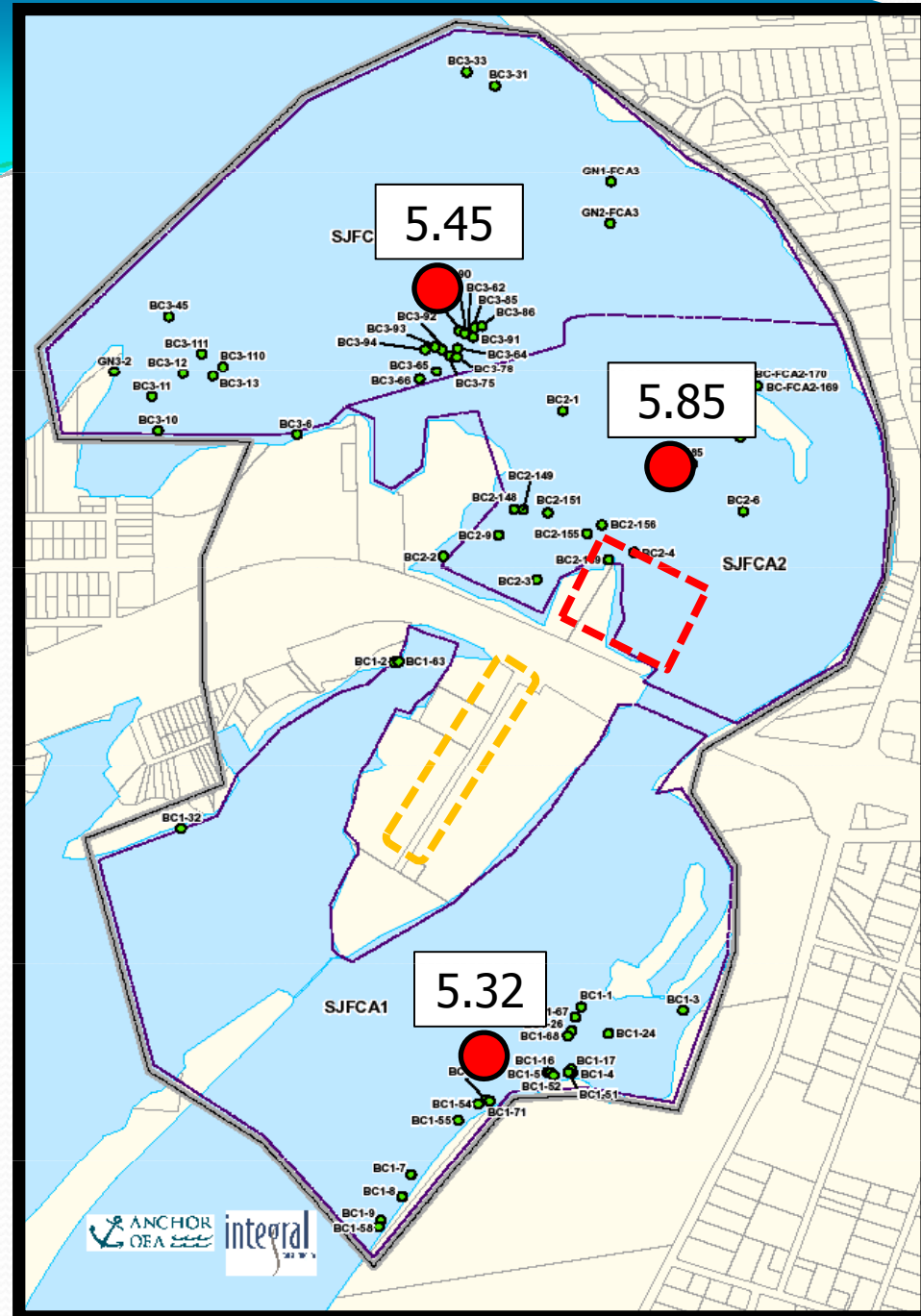


San Jacinto River Waste Pits Superfund Site

205 Soil samples within preliminary site boundary.

-  Waste Pits
-  Southern Impoundment
-  Surface soil (top 2 ft.)
ng/kg TEQ_{DF} Dioxin



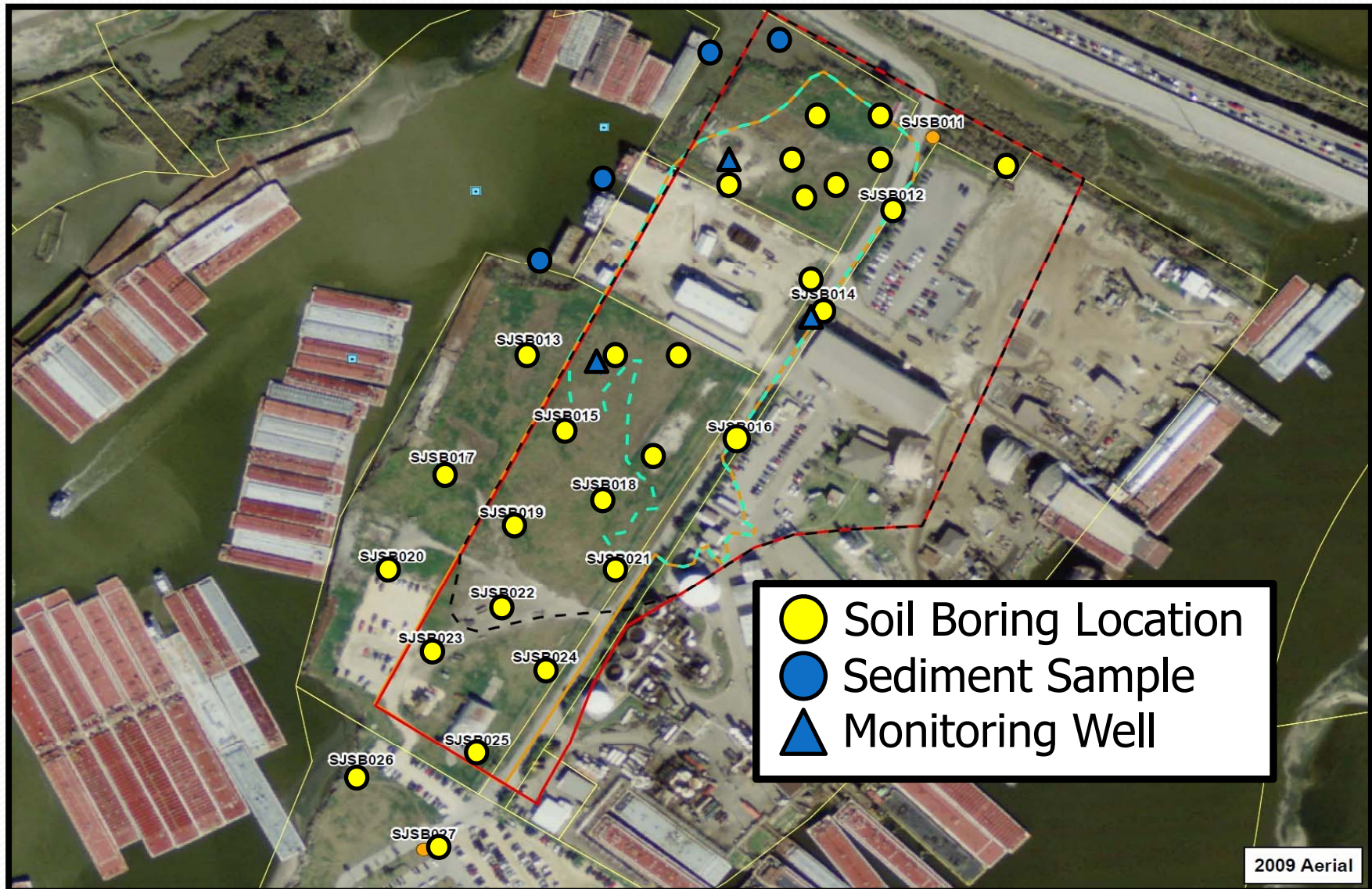


30 Hardhead catfish samples in site boundary.

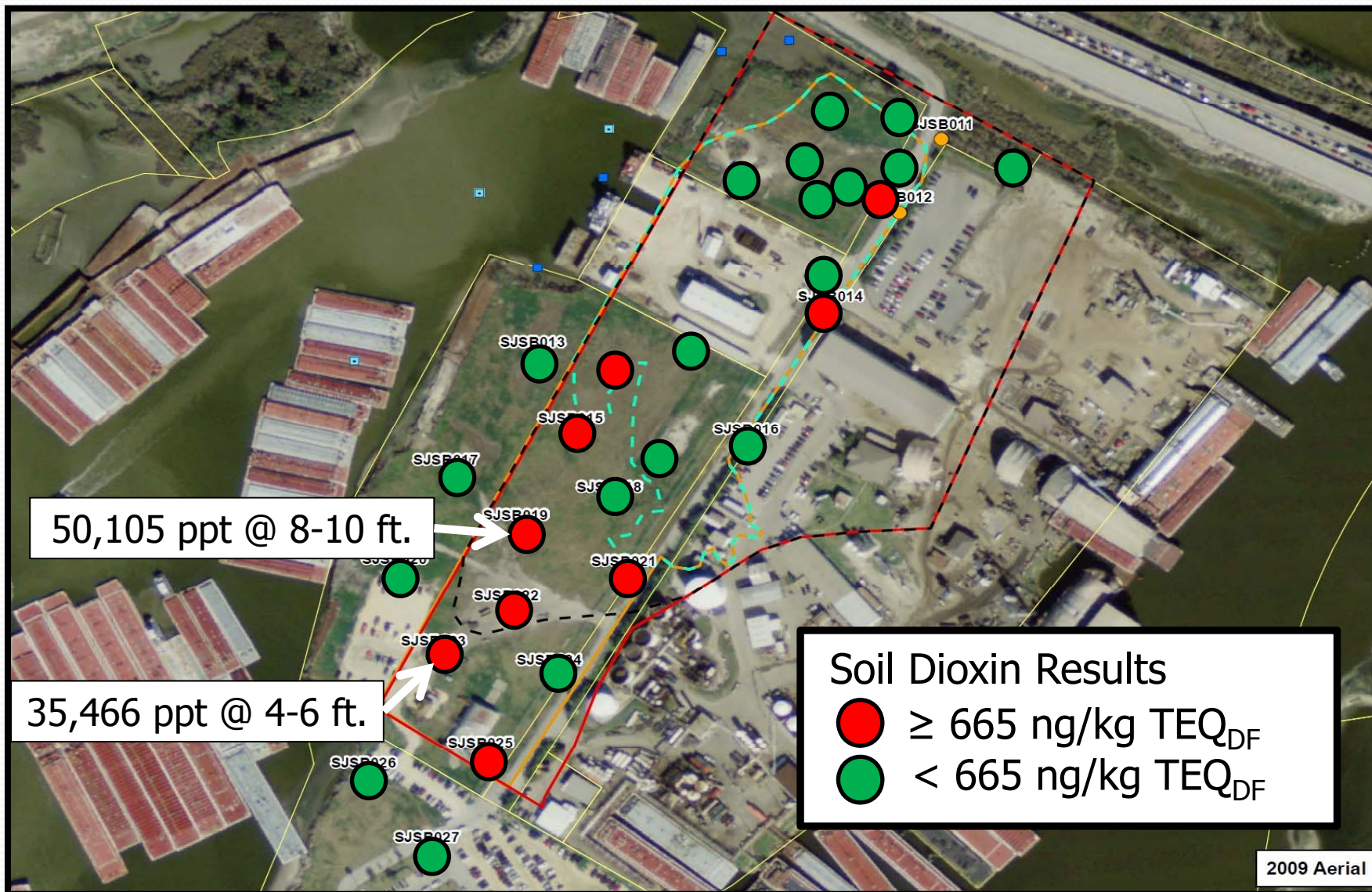
● Fillet samples – ng/kg TEQ_{DF} Dioxin



Southern Impoundment Sample Locations

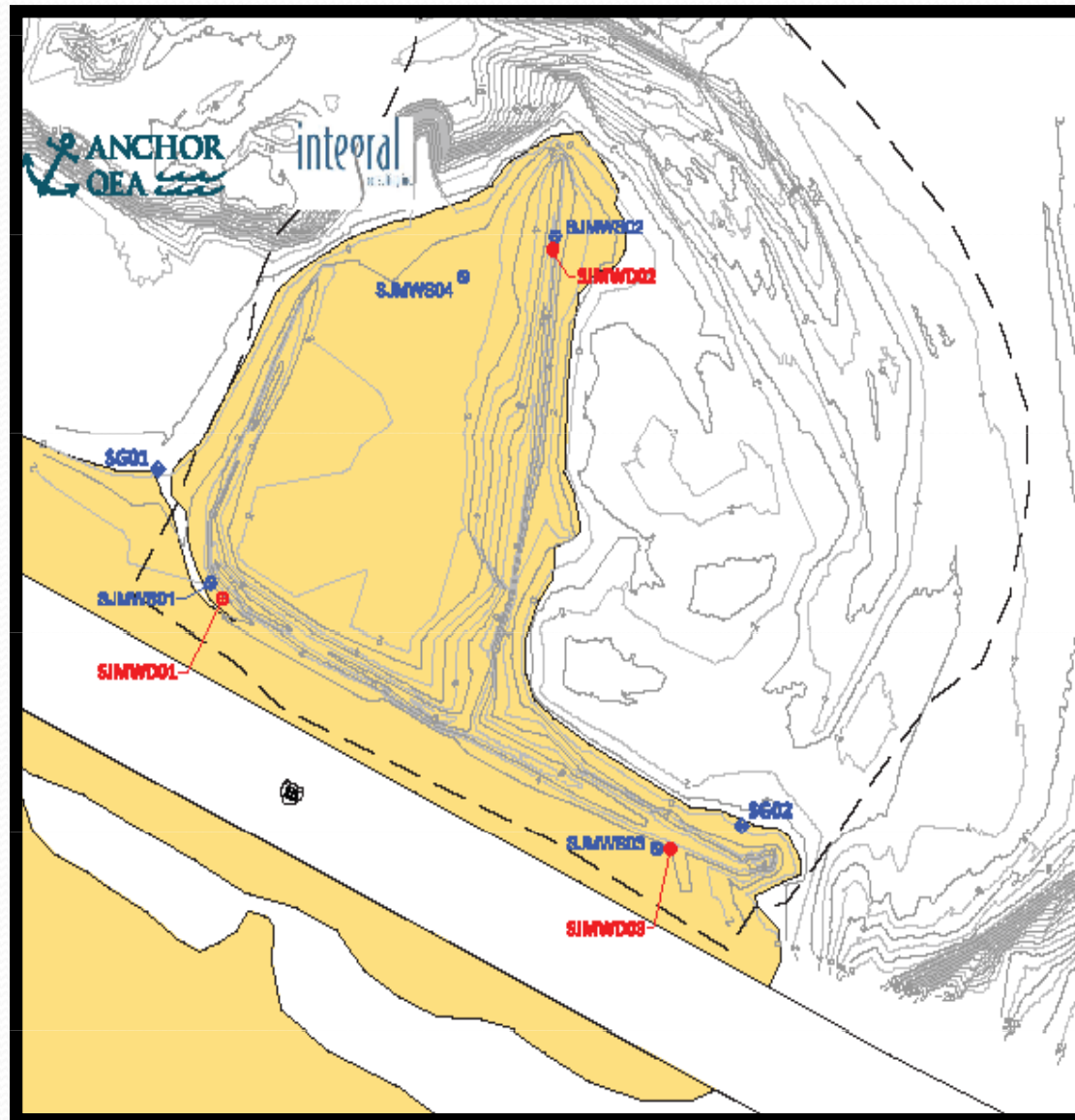


Southern Impoundment Soil Samples

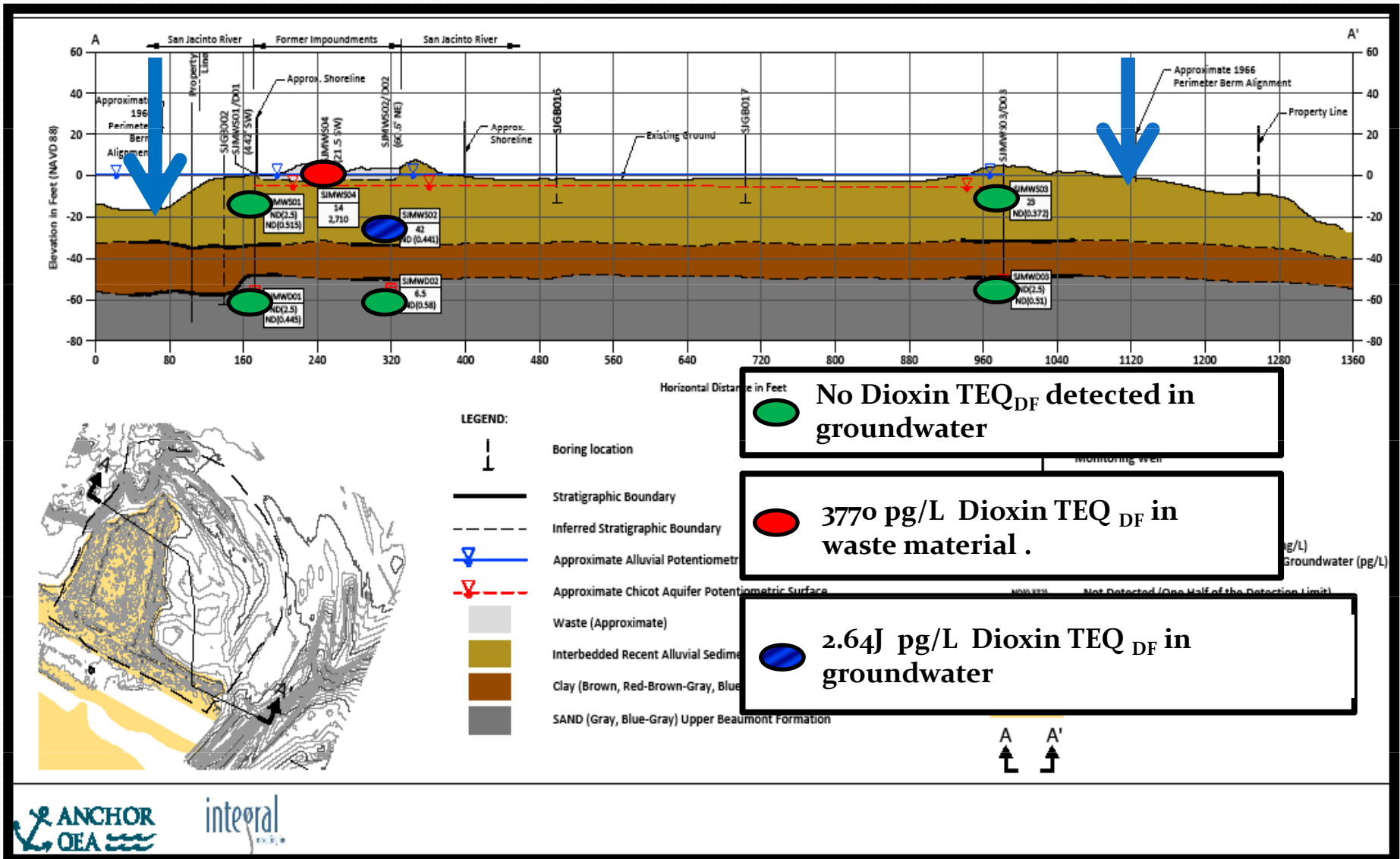


San Jacinto River Waste Pits Superfund Site

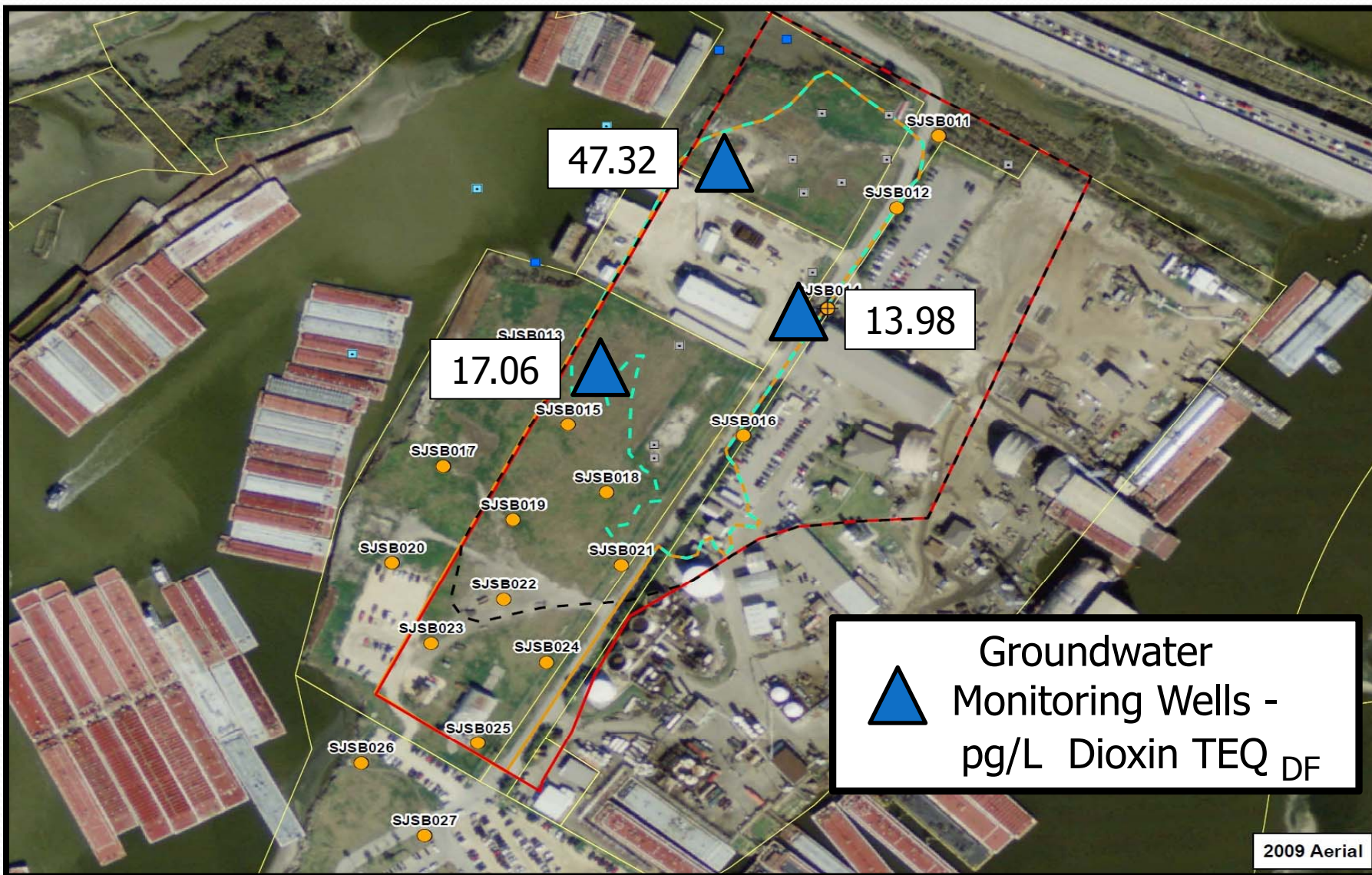
Groundwater sample
locations

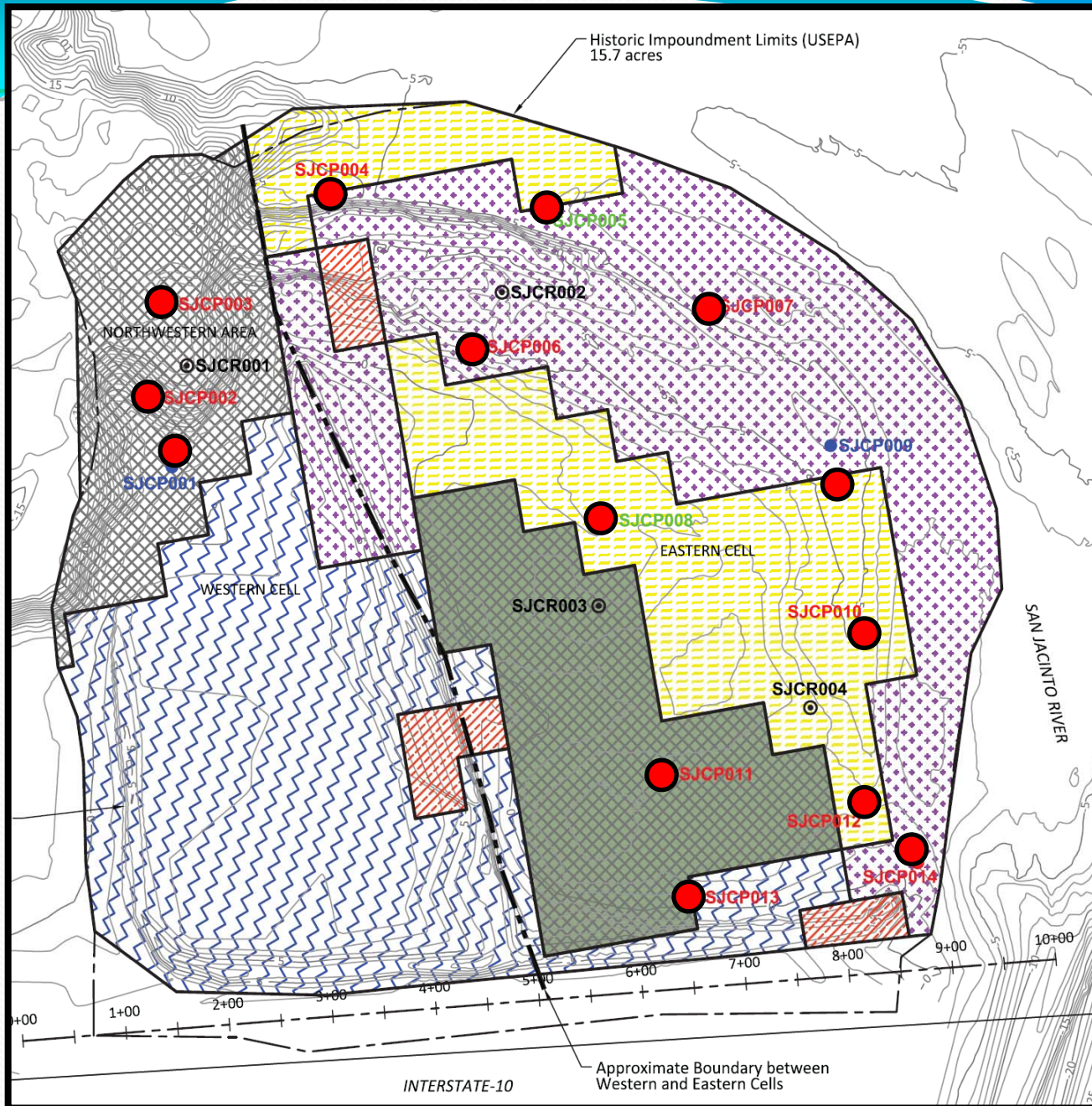


Groundwater Cross-Section



Southern Impoundment Groundwater Monitoring Well Locations





Waste Pits Cap Porewater Sampling Locations



What is “Porewater”?

- Water in the space between the rock and soil particles of the cap;
- Samplers inserted into the cap to measure dioxin and furan in the pore water.



Cap Porewater Assessment Results

- Dioxin not detected in any samples;
- Furan at very low levels in three out of 48 samples and not detected in the other 45 samples;
- Neither dioxin or furan were detected in the overlying surface water.

RI/FS Schedule

San Jacinto River Waste Pits Superfund Site



- **Remedial Investigation Report**

- Initial Draft Submitted - Nov 2012
- Approval of Final Report - March 2013



- **Feasibility Study Report**

- Initial Draft Submitted - April 2013
- Approval of Final Report - Sept 2013



- **Proposed Plan for Remediation**

- Public Comment Period Begins – Nov 2013

Time Critical Removal Action (TCRA) Update

San Jacinto River Waste Pits Site



TCRA Update – Western Berm Erosion

Timeline

- RP notification of berm erosion July 23, 2012;
- EPA inspection of cap July 24, 2012;
- Completion of repairs of western berm August 6, 2012;
- EPA, USACE, and RP assessment of cap design/construction.



TCRA Update – Armor Cap Inspections

Results of Cap Inspections – February / May / October 2012:

- Cap observed to be in visually intact;
- Site security fencing and signage intact;
- No evidence of trespassers or fishing around waste pits;
- 1st and 2nd quarterly topographic surveys - no cap repair needed.



San Jacinto River Waste Pits Superfund Site

For More Information

U.S. EPA

Gary Miller
Remedial Project Manager
214.665.8318 or 1.800.533.3508 (toll-free)

Valmichael Leos
On-Scene Coordinator
214.665.2283 or 1.800.533.3508 (toll-free)

Donn Walters
Sr. Community Involvement
Coordinator / Public Liaison
214.665.6483 or 1.800.533.3508 (toll-free)

Texas Commission on Environmental Quality

Luda Voskov
Project Manager, Superfund Section
512.239.6368

Crystal Taylor
Community Relations, Superfund Section
512.239.3844

Site Repository
Highlands Public Library, Stratford Branch
509 Stratford Street, Highlands Texas

San Jacinto Waste Pits Superfund Site on the Internet

www.sanjacintowastepits.com or
www.epa.gov/region6/6sf/pdf/files/0606611.pdf