

## HOUSTON-GALVESTON AREA COUNCIL



### Temporary Pedestrian/Bicycle Counters Data Summary

Deployment Summary	
Sponsoring Agency	Energy Corridor District
Deployment Period	Friday, May 27, 2016 – Monday, June 6, 2016
Number of Counters Deployed	12
Facility Description	Sidewalks and Shared-Use Paths along Eldridge Parkway
Locations Deployed (Houston-Galveston Area Council)	
Counter #1	Eldridge Parkway Southbound North of Interstate 10
Counter #2	Eldridge Parkway Northbound North of Interstate 10
Counter #3	Eldridge Parkway Southbound at Energy Center IV
Counter #4	Eldridge Parkway Northbound at Energy Center IV
Counter #5	Eldridge Parkway Southbound South of Memorial Drive
Counter #6	Eldridge Parkway Northbound South of Memorial Drive
Counter #7	Eldridge Parkway Southbound North of Enclave Parkway
Counter A	Eldridge Parkway Northbound North of Enclave Parkway
Counter B	Eldridge Parkway Southbound South of Brimhurst Drive
Counter C	Eldridge Parkway Northbound South of Brimhurst Drive
Counter D	Eldridge Parkway Southbound North of Briar Forest Drive
Counter E	Eldridge Parkway Northbound North of Briar Forest Drive

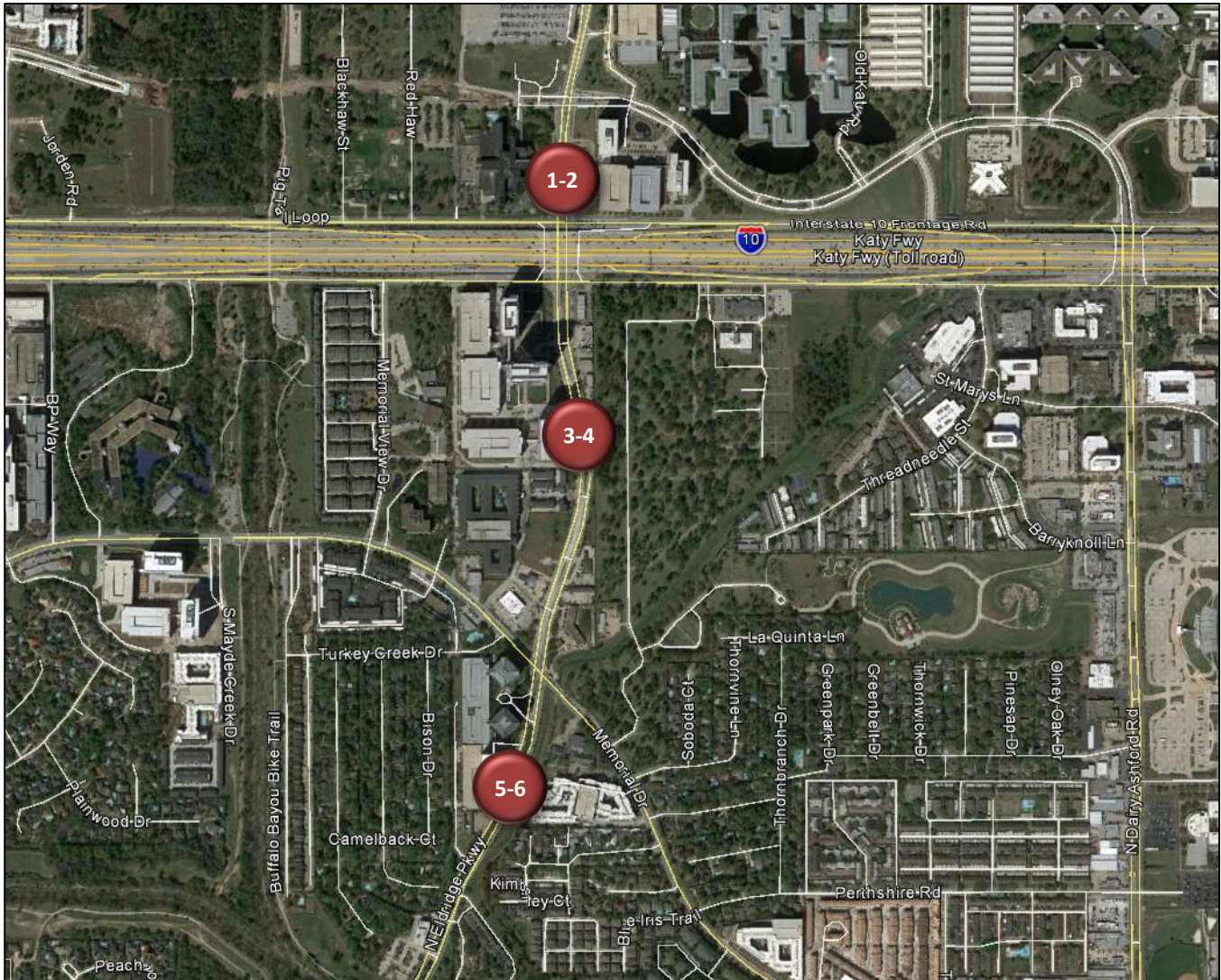
#### About the Temporary Pedestrian/Bicycle Counters

The Houston-Galveston Area Council (H-GAC) has temporary counters (TRAFx Infrared Trail Counters: Generation III) that can be borrowed by local governments and transportation agencies to count the number of people using off-street pedestrian and bicycle facilities. Infrared technology is used to count the number of people passing the counter. The counters do not differentiate between pedestrians and bicyclists, but count the total number of users.

The Texas Transportation Institute (TTI) owns additional temporary counters that it deploys along off-street pedestrian and bicycle facilities statewide.

## Counter Locations

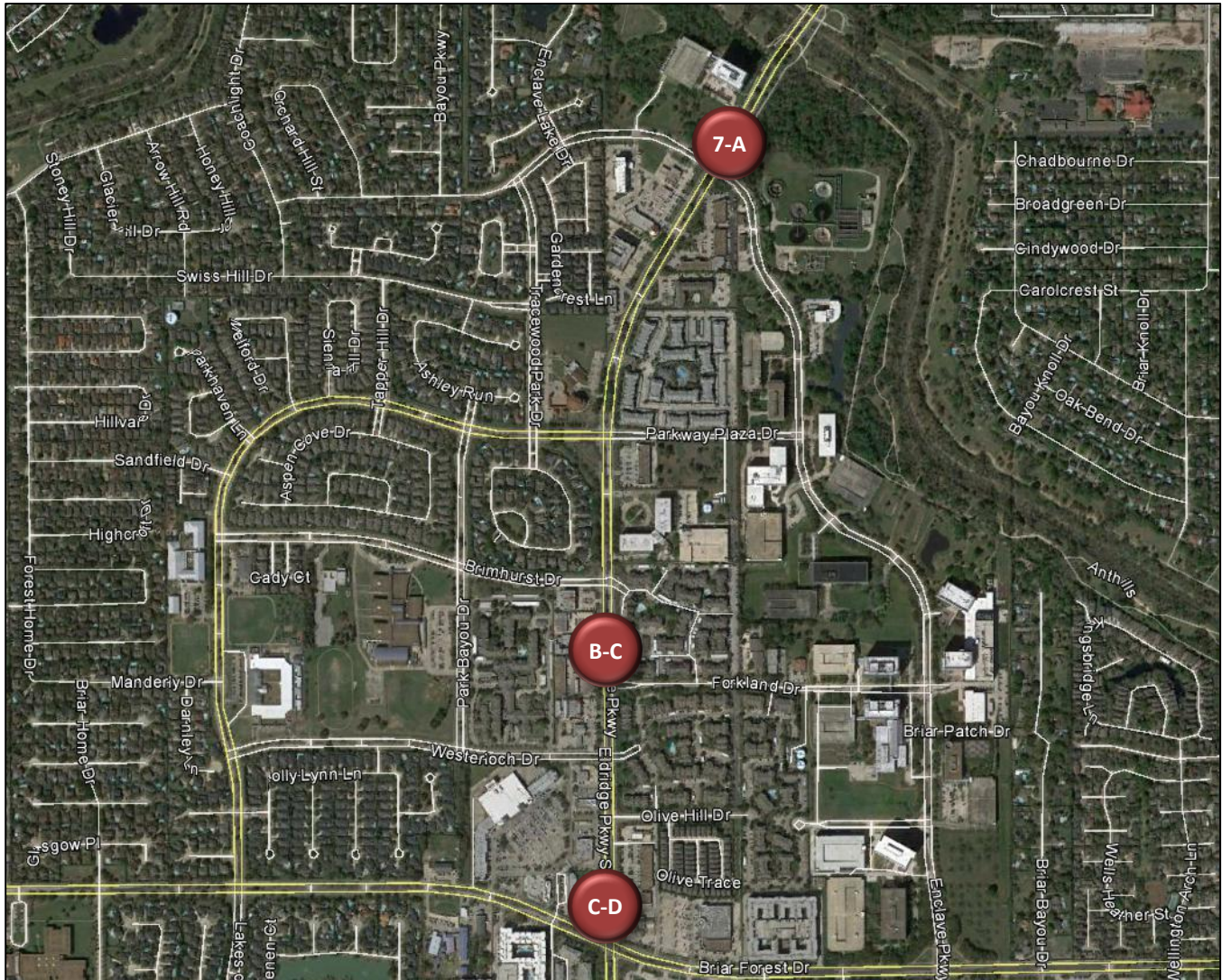
Sidewalks and Shared-Use Paths along Eldridge Parkway North of Buffalo Bayou



Counter	Location	Total Users	Average Daily Usage
1	Eldridge Parkway Southbound North of Interstate 10	120	11
2	Eldridge Parkway Northbound North of Interstate 10	67	6
3	Eldridge Parkway Southbound at Energy Center IV	202	18
4	Eldridge Parkway Northbound at Energy Center IV	85	8
5	Eldridge Parkway Southbound South of Memorial Drive	474	43
6	Eldridge Parkway Northbound South of Memorial Drive	579	53

## Counter Locations

Sidewalks and Shared-Use Paths along Eldridge Parkway South of Buffalo Bayou



Counter	Location	Total Users	Average Daily Usage
7	Eldridge Parkway Southbound North of Enclave Parkway	946	86
A	Eldridge Parkway Northbound North of Enclave Parkway	N/A*	N/A*
B	Eldridge Parkway Southbound South of Brimhurst Drive	732	67
C	Eldridge Parkway Northbound South of Brimhurst Drive	888	81
D	Eldridge Parkway Southbound North of Briar Forest Drive	498	45
E	Eldridge Parkway Northbound North of Briar Forest Drive	577	52

\*Note: Counter A malfunctioned and did not accurately collect data during the deployment period.

### Pedestrian/Bicycle Activity along Eldridge Parkway

Accommodations for pedestrians (and, in some locations, cyclists) are provided on both sides of Eldridge Parkway between Interstate 10 and Briar Forest Drive. Counters were placed adjacent to sidewalks and shared-use paths on both sides of the street near Interstate 10, Energy Center IV, Memorial Drive, Enclave Parkway, Brimhurst Drive, and Briar Forest Drive in a *screen line*, helping determine how many pedestrians and cyclists are moving through the area. There tends to be more pedestrian/bicycle activity south of Memorial Drive.

Location	Counter	Facility Type	Total Users	Average Daily Usage
Eldridge Parkway North of Interstate 10	1	Shared-Use Path (Adj. to Southbound Lanes)	120	11
	2	Shared-Use Path (Adj. to Northbound Lanes)	67	6
	Total Pedestrians/Cyclists in Area (Counter #1 + Counter #2)		187	17
Eldridge Parkway at Energy Center IV	3	Sidewalk (Adj. to Southbound Lanes)	202	18
	4	Sidewalk (Adj. to Northbound Lanes)	85	8
	Total Pedestrians/Cyclists in Area (Counter #3 + Counter #4)		287	26
Eldridge Parkway South of Memorial Drive	5	Sidewalk (Adj. to Southbound Lanes)	474	43
	6	Sidewalk (Adj. to Northbound Lanes)	579	53
	Total Pedestrians/Cyclists in Area (Counter #5 + Counter #6)		1,053	96
Eldridge Parkway North of Enclave Parkway	7	Sidewalk (Adj. to Southbound Lanes)	946	86
	A	Shared-Use Path (Adj. to Northbound Lanes)	N/A	N/A
	Total Pedestrians/Cyclists in Area (Counter #7 + Counter A)		N/A (Counter A malfunctioned during deployment)	
Eldridge Parkway South of Brimhurst Drive	B	Sidewalk (Adj. to Southbound Lanes)	732	67
	C	Sidewalk (Adj. to Northbound Lanes)	888	81
	Total Pedestrians/Cyclists in Area (Counter B + Counter C)		1,620	147
Eldridge Parkway North of Briar Forest Drive	D	Sidewalk (Adj. to Southbound Lanes)	498	45
	E	Sidewalk (Adj. to Northbound Lanes)	577	52
	Total Pedestrians/Cyclists in Area (Counter D + Counter E)		1,075	98

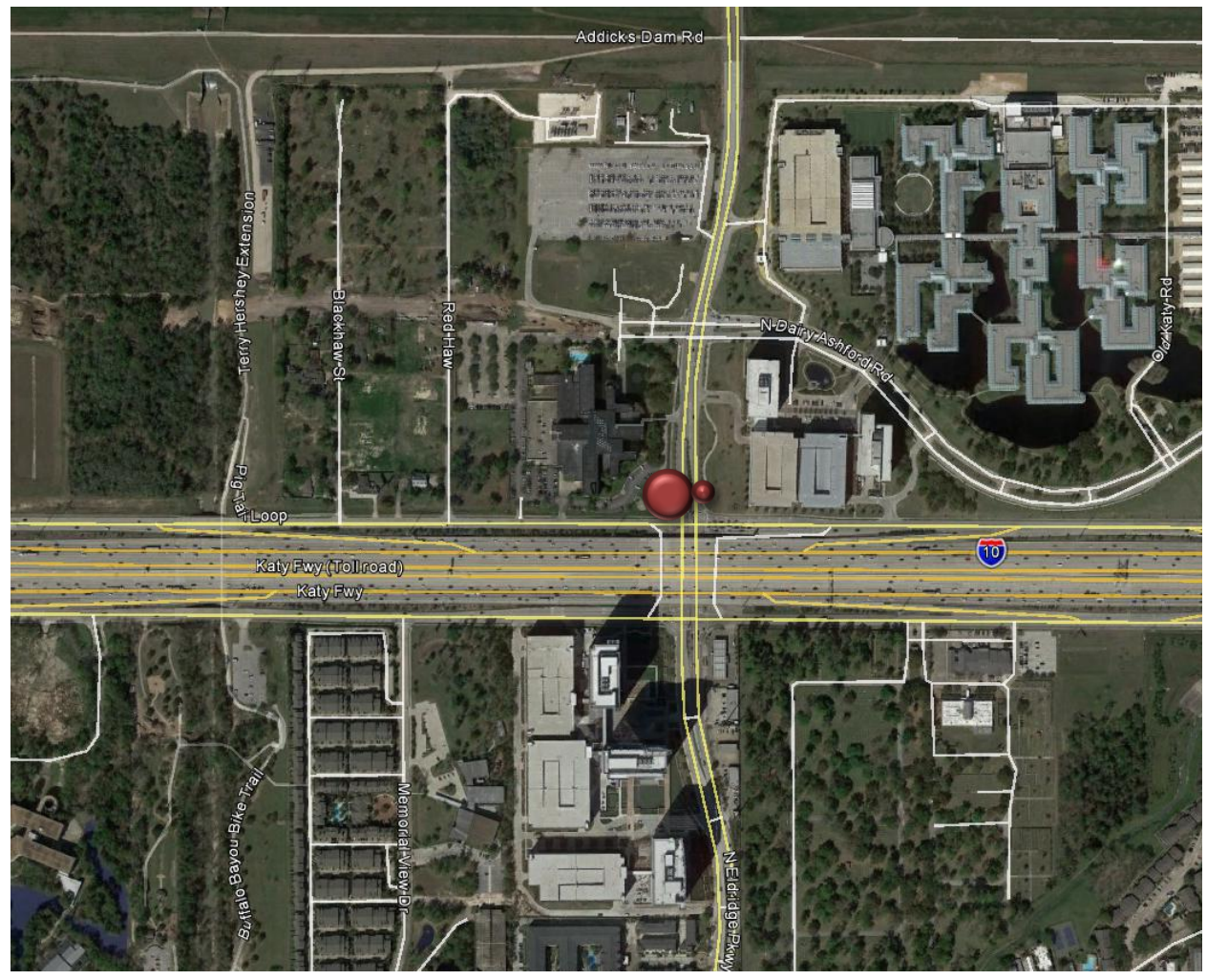
**Counter #1**

Eldridge Parkway Southbound North of Interstate 10

Location Information	
Location Name	Eldridge Parkway Southbound North of Interstate 10
Location Description	Shared-Use Path along Eldridge Parkway Southbound North of Interstate 10
Jurisdiction	Energy Corridor District/City of Houston
Agency Deployed	Energy Corridor District
GPS Coordinates	29°47'8.32"N, 95°37'4.65"W
Surrounding Land Uses	North   Office
	South   Interstate 10, Commercial/Retail, Office
	East   Office
	West   Hotel
What object was device secured to?	Cypress Tree (Fourth Tree North of Interstate 10)
Sidewalk Width	10'
Buffer Width	15'
Street Width	Four-Lane Divided Roadway
Parallel Parking	No
Landscaping or Trees	Yes
Sidewalk Pavement Type	Concrete
ADA Ramps	Yes
Sidewalk Condition	Good
Speed Limit	35 miles per hour
Street Lighting	Yes
Street Traffic Volume	32,360 (1100 N. Eldridge Parkway: TxDOT 2012)
Transit	No
Shade	No
Have counts been collected by H-GAC at this location before?	No

Trends
<ul style="list-style-type: none"> <li>Usage is low at this location.</li> <li>Usage tends to be higher during weekends (13 users/day) than on weekdays (10 users/day).</li> </ul>

**Location Information: Map**



**Location Information: Photos**



Image 1: Shared-Use Path along Eldridge Parkway Southbound Facing North



Image 2: Shared-Use Path along Eldridge Parkway Southbound Facing South

<b>Daily Usage</b> Eldridge Parkway Southbound North of Interstate 10				
Date	Users	Select Weather Data*		
		High Temperature (°F)	Low Temperature (°F)	Precipitation (inches)
Friday, May 27, 2016	9	84	66	1.13
Saturday, May 28, 2016	14	89	66	0
Sunday, May 29, 2016	18	88	71	0
Monday, May 30, 2016	12	86	71	0.01
Tuesday, May 31, 2016	11	88	70	0.02
Wednesday, June 1, 2016	8	87	73	0.06
Thursday, June 2, 2016	4	82	70	1.5
Friday, June 3, 2016	9	82	70	0.23
Saturday, June 4, 2016	13	82	70	0.48
Sunday, June 5, 2016	6	84	70	0.33
Monday, June 6, 2016	16	89	72	0

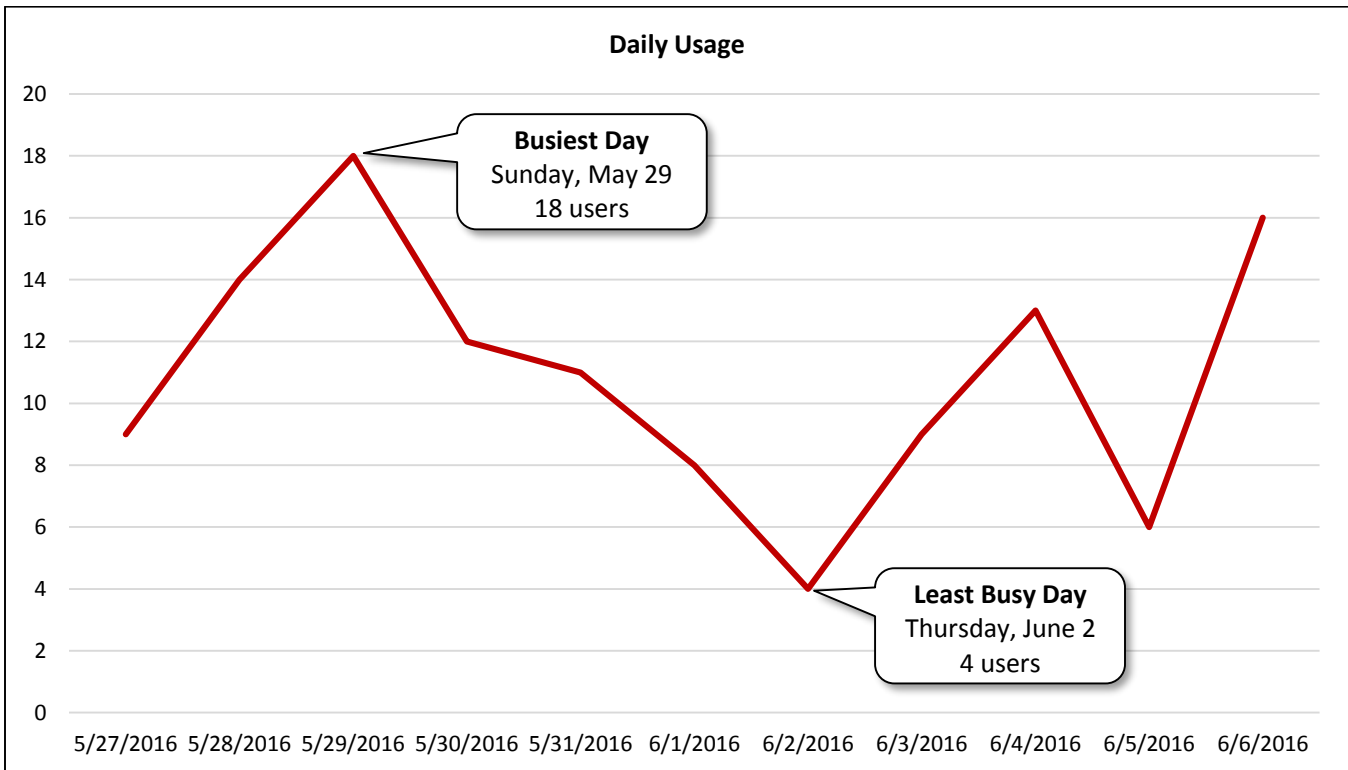
  

<b>Total</b>	120
<b>Average Daily Usage</b>	11
<b>Average Daily Usage (Weekday)</b>	10
<b>Average Daily Usage (Weekend)</b>	13

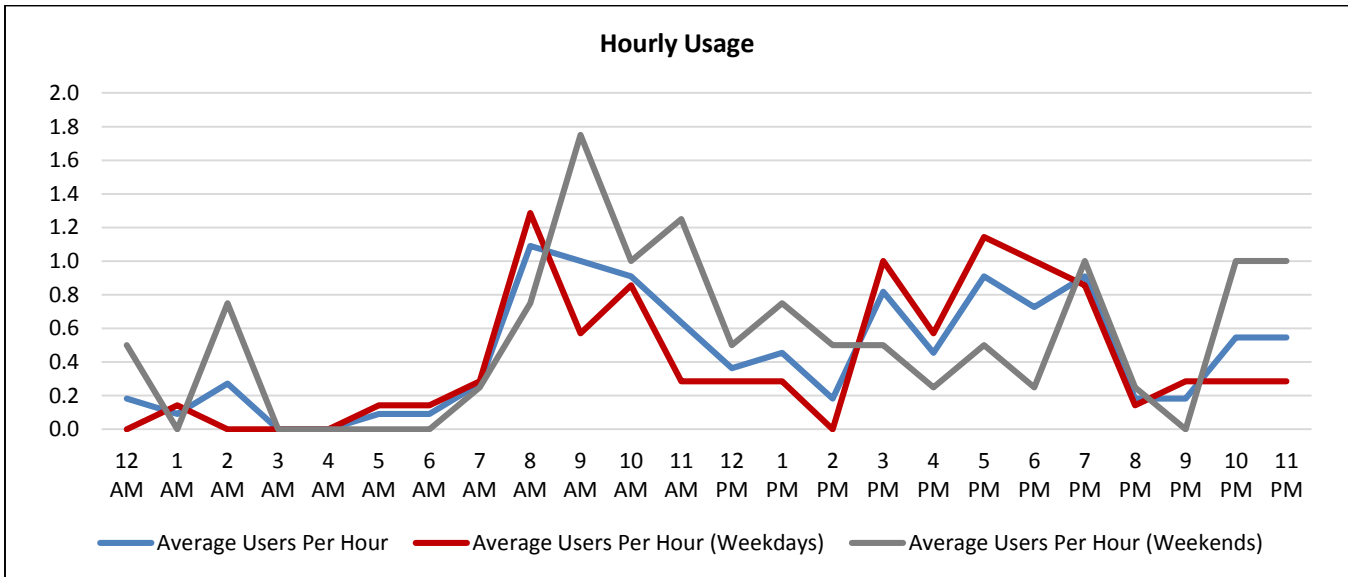
  

Notes
Memorial Day: Monday, May 30, 2016

\*Weather conditions recorded at KSGR.



<b>Hourly Usage</b> Eldridge Parkway Southbound North of Interstate 10			
<b>Time of Day</b>	<b>Average Users Per Hour</b>	<b>Average Users Per Hour (Weekdays)</b>	<b>Average Users Per Hour (Weekends)</b>
12:00 a.m.	0.2	0.0	0.5
1:00 a.m.	0.1	0.1	0.0
2:00 a.m.	0.3	0.0	0.8
3:00 a.m.	0.0	0.0	0.0
4:00 a.m.	0.0	0.0	0.0
5:00 a.m.	0.1	0.1	0.0
6:00 a.m.	0.1	0.1	0.0
7:00 a.m.	0.3	0.3	0.3
8:00 a.m.	1.1	1.3	0.8
9:00 a.m.	1.0	0.6	1.8
10:00 a.m.	0.9	0.9	1.0
11:00 a.m.	0.6	0.3	1.3
12:00 p.m.	0.4	0.3	0.5
1:00 p.m.	0.5	0.3	0.8
2:00 p.m.	0.2	0.0	0.5
3:00 p.m.	0.8	1.0	0.5
4:00 p.m.	0.5	0.6	0.3
5:00 p.m.	0.9	1.1	0.5
6:00 p.m.	0.7	1.0	0.3
7:00 p.m.	0.9	0.9	1.0
8:00 p.m.	0.2	0.1	0.3
9:00 p.m.	0.2	0.3	0.0
10:00 p.m.	0.5	0.3	1.0
11:00 p.m.	0.5	0.3	1.0





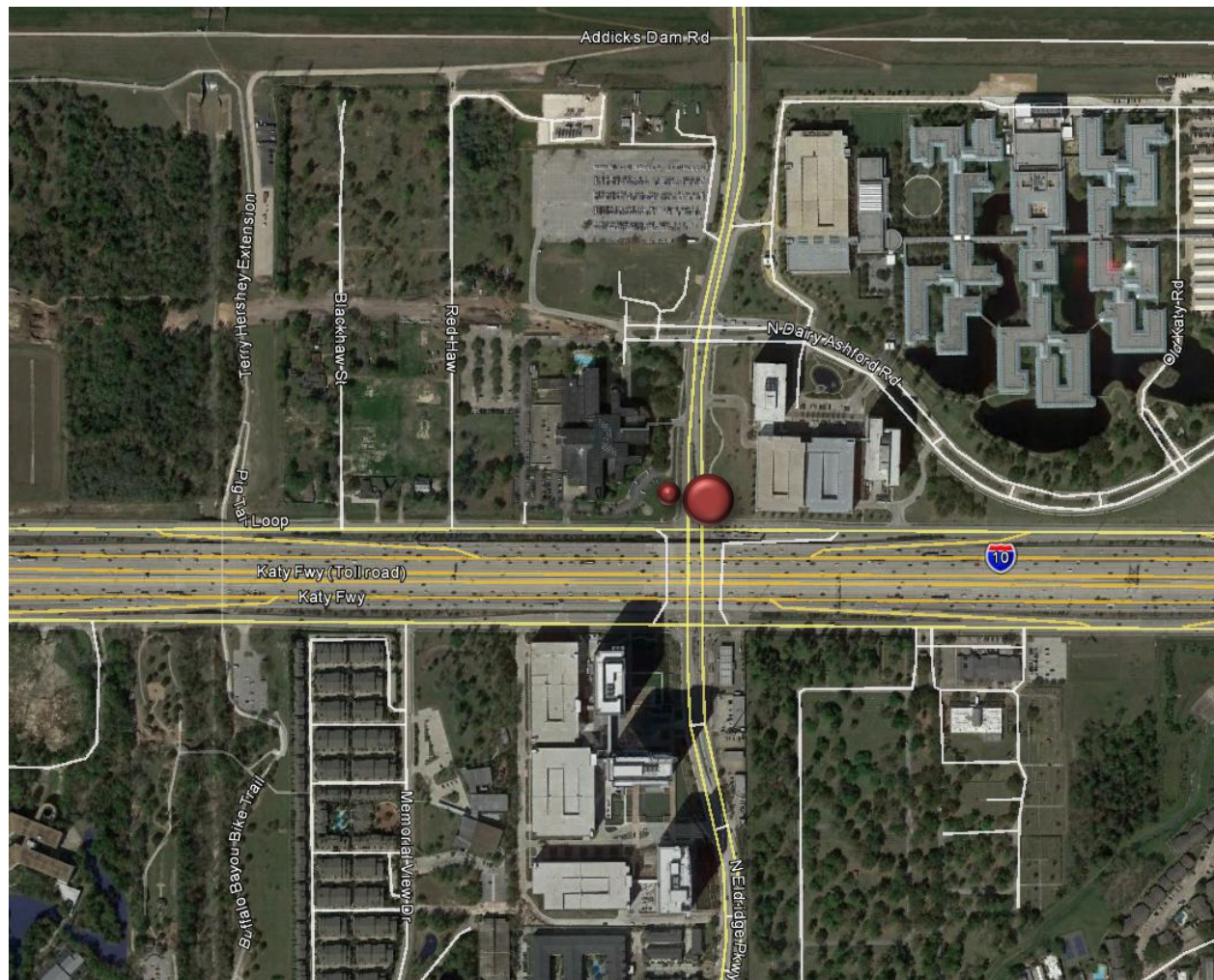
**Counter #2**

Eldridge Parkway Northbound North of Interstate 10

Location Information	
Location Name	Eldridge Parkway Northbound North of Interstate 10
Location Description	Shared-Use Path along Eldridge Parkway Northbound North of Interstate 10
Jurisdiction	Energy Corridor District/City of Houston
Agency Deployed	Energy Corridor District
GPS Coordinates	29°47'8.89"N, 95°37'3.47"W
Surrounding Land Uses	North   Office
	South   Interstate 10, Commercial/Retail, Office
	East   Office
	West   Hotel
What object was device secured to?	Cypress Tree (Fourth Tree North of Interstate 10)
Sidewalk Width	10'
Buffer Width	Varies (15' at Counter Location)
Street Width	Four-Lane Divided Roadway
Parallel Parking	No
Landscaping or Trees	Yes
Sidewalk Pavement Type	Concrete
ADA Ramps	Yes
Sidewalk Condition	Good
Speed Limit	35 miles per hour
Street Lighting	Yes
Street Traffic Volume	32,360 (1100 N. Eldridge Parkway: TxDOT 2012)
Transit	No
Shade	No
Have counts been collected by H-GAC at this location before?	No

Trends
<ul style="list-style-type: none"> <li>• Usage is low at this location.</li> <li>• Usage tends to be higher on weekdays (7 users/day) than during weekends (4 users/day).</li> <li>• There was unusually high usage the afternoon of Wednesday, June 1, with 29 people passing the counter between 2:00 p.m. and 3:00 p.m.</li> </ul>

**Location Information: Map**



**Location Information: Photos**



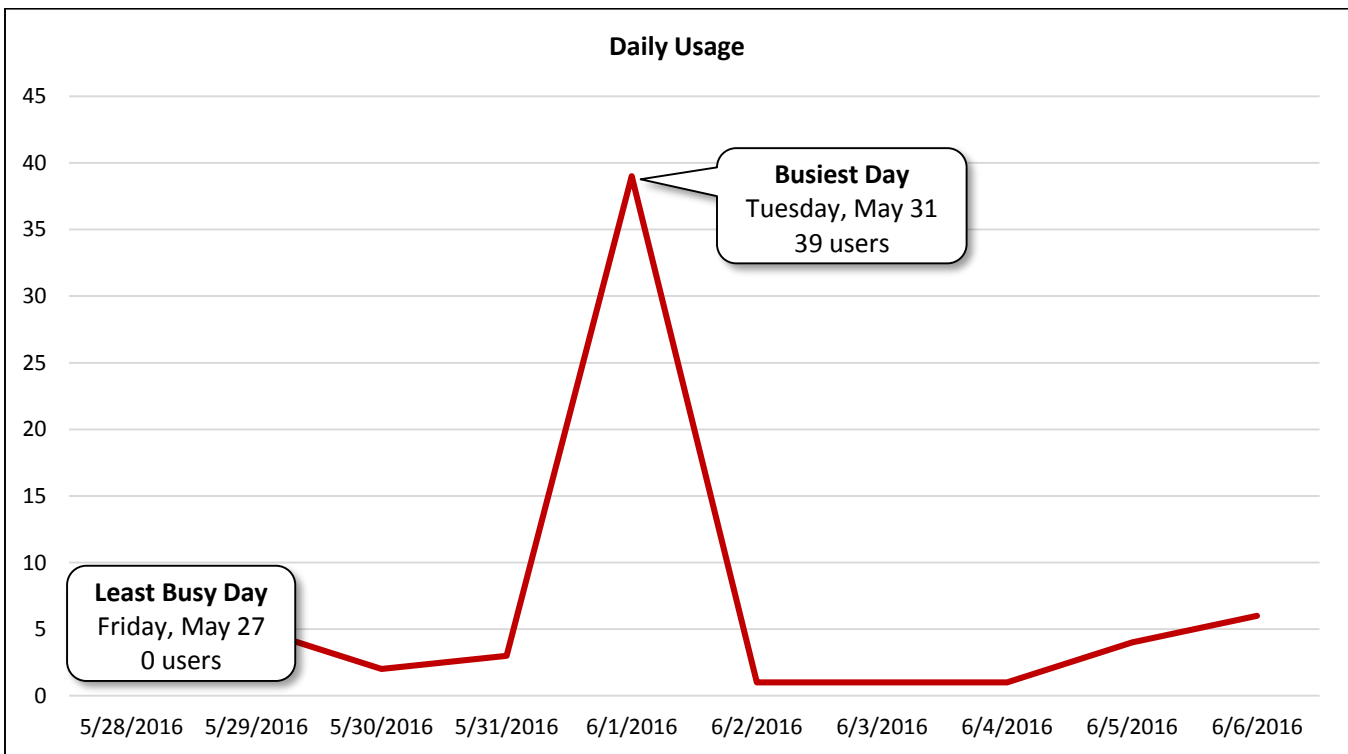
Image 3: Shared-Use Path along Eldridge Parkway Northbound Facing North



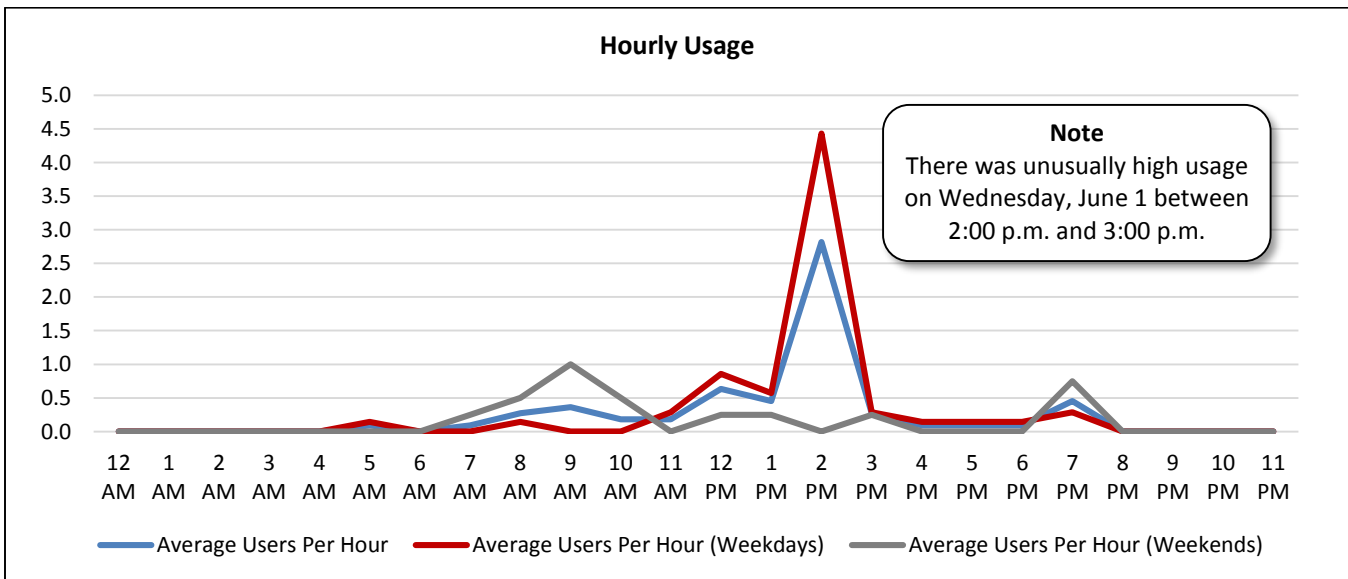
Image 4: Shared-Use Path along Eldridge Parkway Northbound Facing South

<b>Daily Usage</b> Eldridge Parkway Northbound North of Interstate 10				
Date	Users	Select Weather Data*		
		High Temperature (°F)	Low Temperature (°F)	Precipitation (inches)
Friday, May 27, 2016	0	84	66	1.13
Saturday, May 28, 2016	5	89	66	0
Sunday, May 29, 2016	5	88	71	0
Monday, May 30, 2016	2	86	71	0.01
Tuesday, May 31, 2016	3	88	70	0.02
Wednesday, June 1, 2016	39	87	73	0.06
Thursday, June 2, 2016	1	82	70	1.5
Friday, June 3, 2016	1	82	70	0.23
Saturday, June 4, 2016	1	82	70	0.48
Sunday, June 5, 2016	4	84	70	0.33
Monday, June 6, 2016	6	89	72	0
<b>Total</b>	67			
<b>Average Daily Usage</b>	6			
<b>Average Daily Usage (Weekday)</b>	7			
<b>Average Daily Usage (Weekend)</b>	4			
		<b>Notes</b>		
		Memorial Day: Monday, May 30, 2016		

\*Weather conditions recorded at KSGR.



<b>Hourly Usage</b> Eldridge Parkway Northbound North of Interstate 10			
<b>Time of Day</b>	<b>Average Users Per Hour</b>	<b>Average Users Per Hour (Weekdays)</b>	<b>Average Users Per Hour (Weekends)</b>
12:00 a.m.	0.0	0.0	0.0
1:00 a.m.	0.0	0.0	0.0
2:00 a.m.	0.0	0.0	0.0
3:00 a.m.	0.0	0.0	0.0
4:00 a.m.	0.0	0.0	0.0
5:00 a.m.	0.1	0.1	0.0
6:00 a.m.	0.0	0.0	0.0
7:00 a.m.	0.1	0.0	0.3
8:00 a.m.	0.3	0.1	0.5
9:00 a.m.	0.4	0.0	1.0
10:00 a.m.	0.2	0.0	0.5
11:00 a.m.	0.2	0.3	0.0
12:00 p.m.	0.6	0.9	0.3
1:00 p.m.	0.5	0.6	0.3
2:00 p.m.	2.8	4.4	0.0
3:00 p.m.	0.3	0.3	0.3
4:00 p.m.	0.1	0.1	0.0
5:00 p.m.	0.1	0.1	0.0
6:00 p.m.	0.1	0.1	0.0
7:00 p.m.	0.5	0.3	0.8
8:00 p.m.	0.0	0.0	0.0
9:00 p.m.	0.0	0.0	0.0
10:00 p.m.	0.0	0.0	0.0
11:00 p.m.	0.0	0.0	0.0



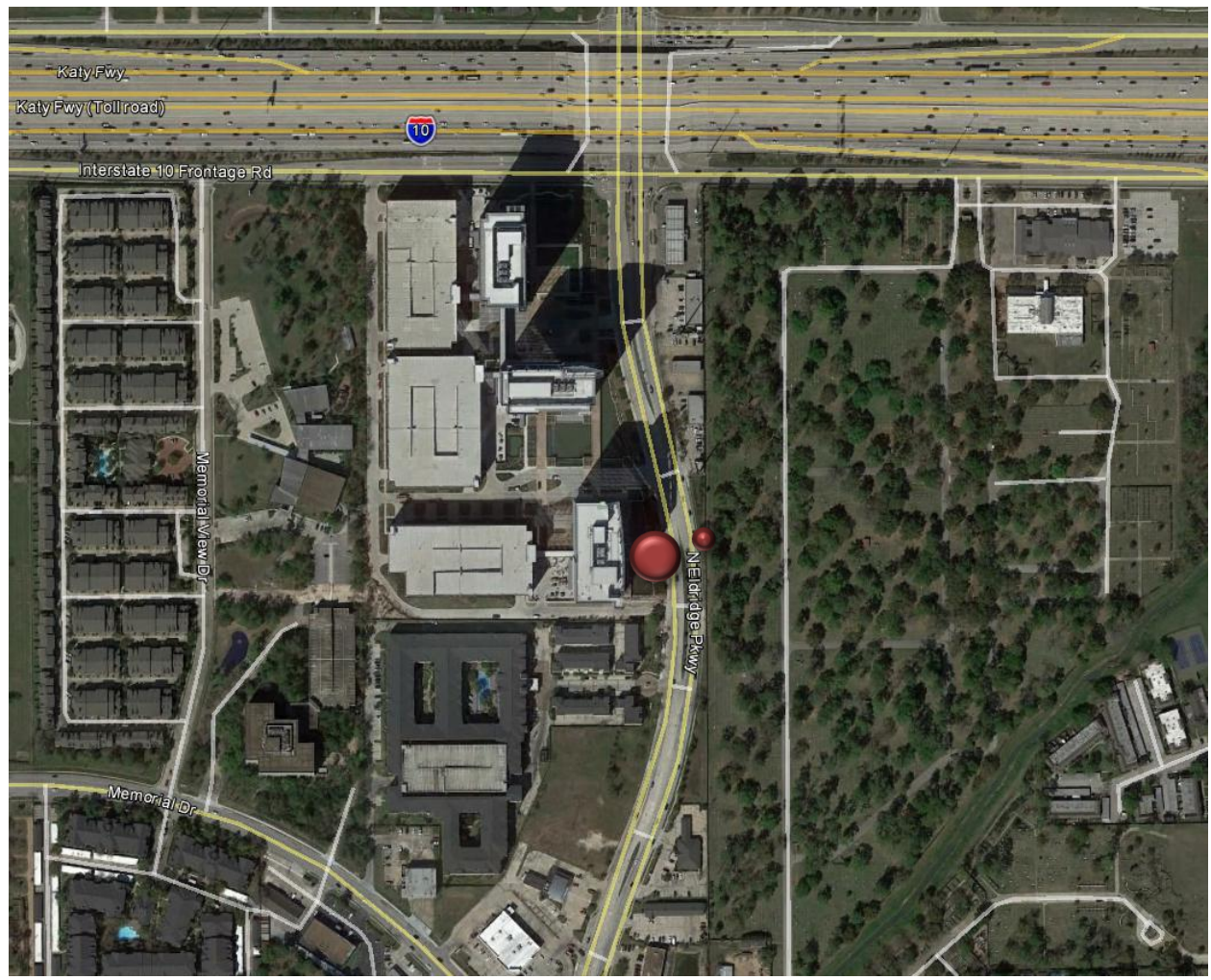
**Counter #3**

## Eldridge Parkway Southbound at Energy Center IV

Location Information		
Location Name	Eldridge Parkway Southbound at Energy Center IV	
Location Description	Sidewalk along Eldridge Parkway Southbound South of Traffic Signal at Energy Center IV	
Jurisdiction	Energy Corridor District/City of Houston	
Agency Deployed	Energy Corridor District	
GPS Coordinates	29°46'53.44"N, 95°37'2.83"W	
Surrounding Land Uses	North	Office, Commercial/Retail
	South	Multi-Family Residential, Vacant Land, Commercial/Retail
	East	Cemetery
	West	Office, Multi-Family Residential
What object was device secured to?	Light Post (First Light Post South of Energy Center IV Traffic Signal)	
Sidewalk Width	10' (8' Concrete Sidewalk + 2' Strip of Brick Pavers Adjacent to Travel Lanes)	
Buffer Width	None	
Street Width	Six-Lane Divided Roadway	
Parallel Parking	No	
Landscaping or Trees	Yes	
Sidewalk Pavement Type	Concrete (8' Wide) + Brick Pavers (2' Wide Adjacent to Travel Lanes)	
ADA Ramps	Yes	
Sidewalk Condition	Good	
Speed Limit	35 miles per hour	
Street Lighting	Yes	
Street Traffic Volume	40,600 (900 N. Eldridge Parkway: TxDOT 2012)	
Transit	No	
Shade	No	
Have counts been collected by H-GAC at this location before?	No	

Trends
<ul style="list-style-type: none"> <li>• Usage tends to be higher on weekdays (20 users/hour) than during weekends (15 users/hour).</li> <li>• On weekdays, usage is highest in the morning (7:00 a.m. – 8:00 a.m.).</li> <li>• During weekends, usage is highest in the evening (7:00 p.m. – 8:00 p.m.).</li> </ul>

**Location Information: Map**



**Location Information: Photos**



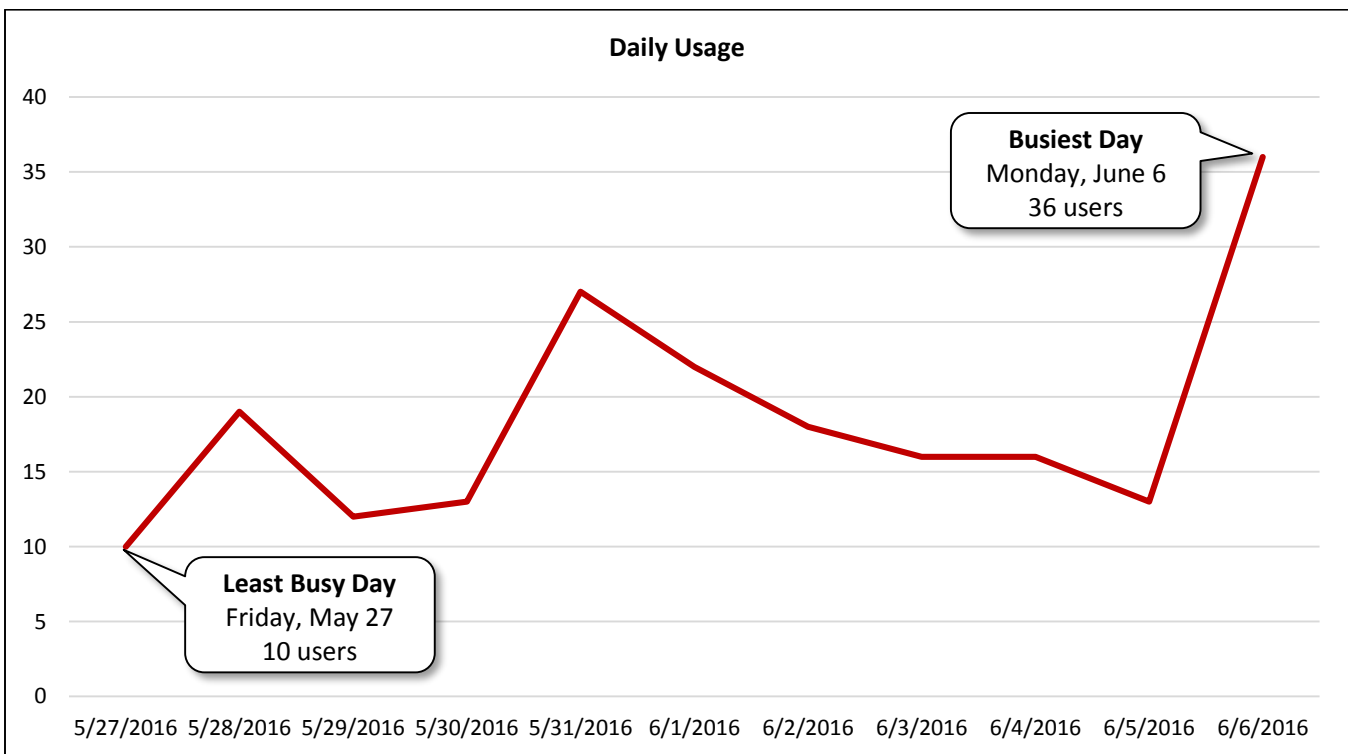
Image 5: Sidewalk along Eldridge Parkway Southbound at Energy Center IV Facing North



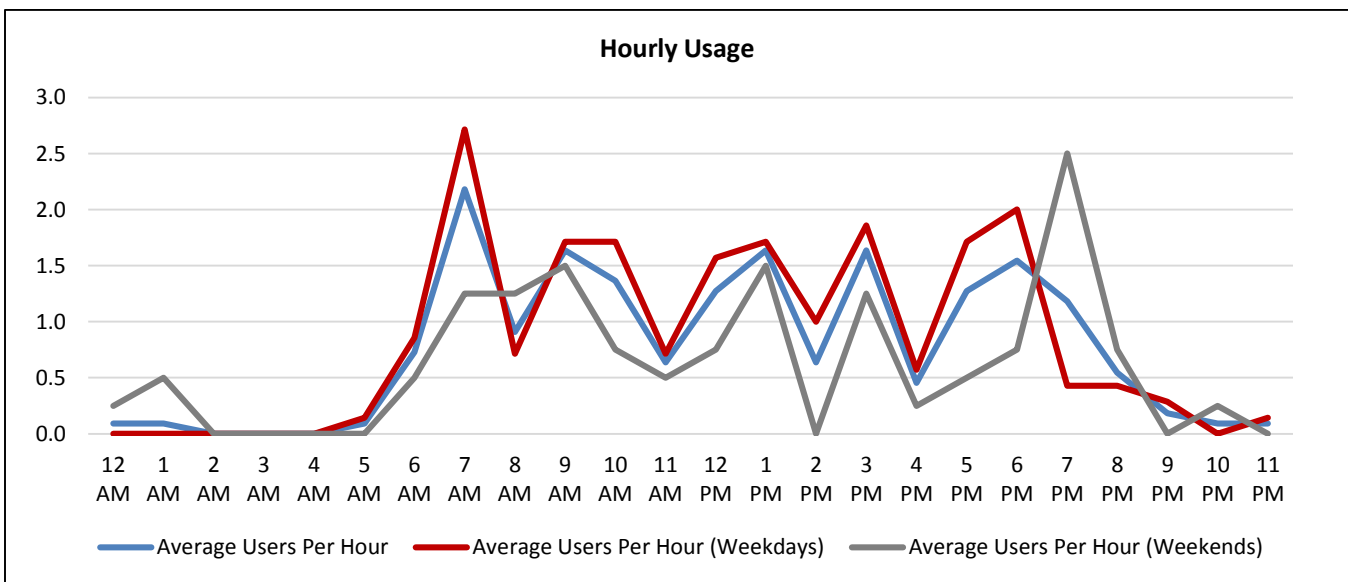
Image 6: Sidewalk along Eldridge Parkway Southbound at Energy Center IV Facing South

<b>Daily Usage</b> Eldridge Parkway Southbound at Energy Center IV				
Date	Users	Select Weather Data*		
		High Temperature (°F)	Low Temperature (°F)	Precipitation (inches)
Friday, May 27, 2016	10	84	66	1.13
Saturday, May 28, 2016	19	89	66	0
Sunday, May 29, 2016	12	88	71	0
Monday, May 30, 2016	13	86	71	0.01
Tuesday, May 31, 2016	27	88	70	0.02
Wednesday, June 1, 2016	22	87	73	0.06
Thursday, June 2, 2016	18	82	70	1.5
Friday, June 3, 2016	16	82	70	0.23
Saturday, June 4, 2016	16	82	70	0.48
Sunday, June 5, 2016	13	84	70	0.33
Monday, June 6, 2016	36	89	72	0
<b>Total</b>	202			
<b>Average Daily Usage</b>	18			
<b>Average Daily Usage (Weekday)</b>	20			
<b>Average Daily Usage (Weekend)</b>	15			
		<b>Notes</b>		
		Memorial Day: Monday, May 30, 2016		

\*Weather conditions recorded at KSGR.



Hourly Usage Eldridge Parkway Southbound at Energy Center IV			
Time of Day	Average Users Per Hour	Average Users Per Hour (Weekdays)	Average Users Per Hour (Weekends)
12:00 a.m.	0.1	0.0	0.3
1:00 a.m.	0.1	0.0	0.5
2:00 a.m.	0.0	0.0	0.0
3:00 a.m.	0.0	0.0	0.0
4:00 a.m.	0.0	0.0	0.0
5:00 a.m.	0.1	0.1	0.0
6:00 a.m.	0.7	0.9	0.5
7:00 a.m.	2.2	2.7	1.3
8:00 a.m.	0.9	0.7	1.3
9:00 a.m.	1.6	1.7	1.5
10:00 a.m.	1.4	1.7	0.8
11:00 a.m.	0.6	0.7	0.5
12:00 p.m.	1.3	1.6	0.8
1:00 p.m.	1.6	1.7	1.5
2:00 p.m.	0.6	1.0	0.0
3:00 p.m.	1.6	1.9	1.3
4:00 p.m.	0.5	0.6	0.3
5:00 p.m.	1.3	1.7	0.5
6:00 p.m.	1.5	2.0	0.8
7:00 p.m.	1.2	0.4	2.5
8:00 p.m.	0.5	0.4	0.8
9:00 p.m.	0.2	0.3	0.0
10:00 p.m.	0.1	0.0	0.3
11:00 p.m.	0.1	0.1	0.0





**Counter #4**

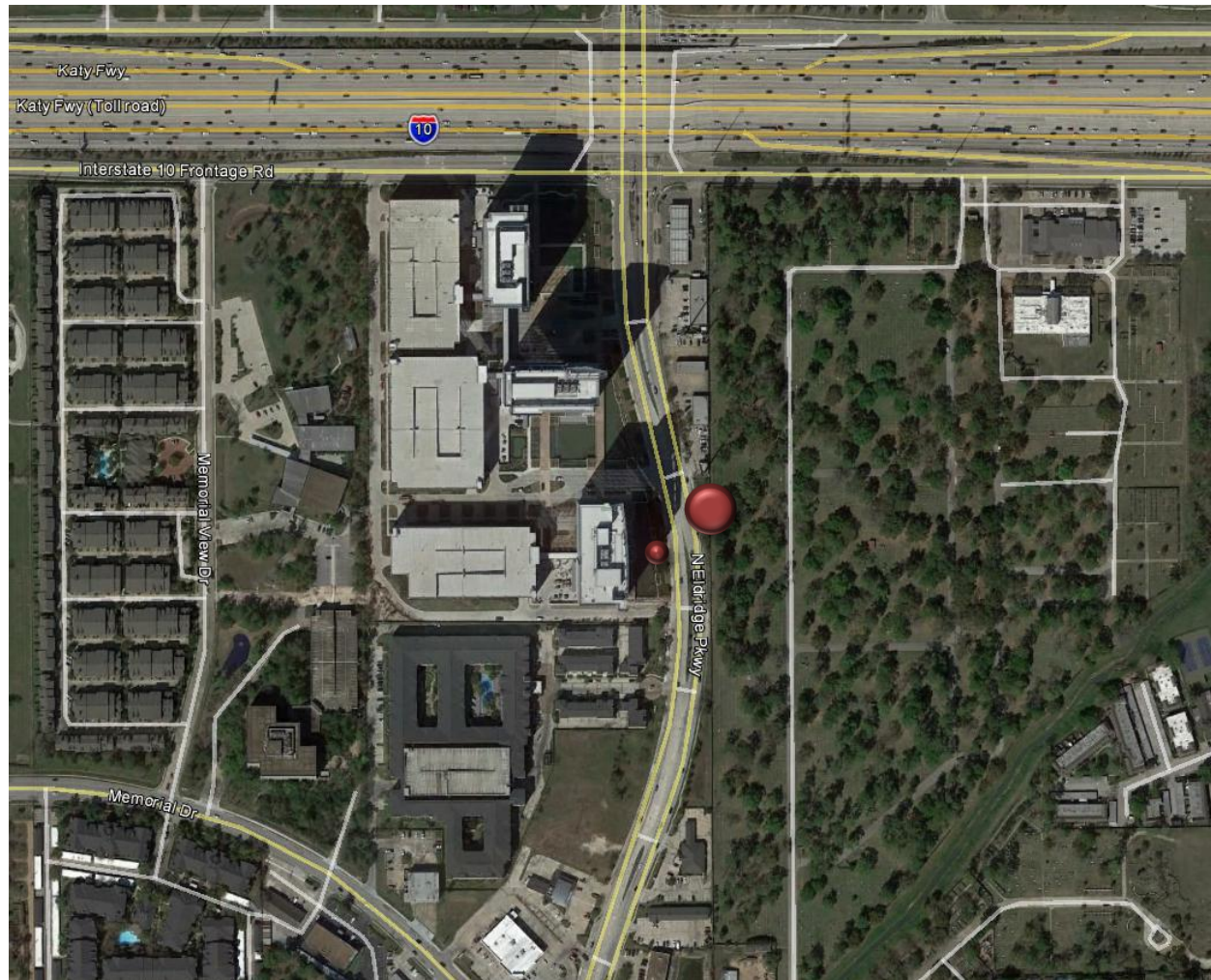
Eldridge Parkway Northbound at Energy Center IV

Location Information		
Location Name	Eldridge Parkway Northbound at Energy Center IV	
Location Description	Sidewalk along Eldridge Parkway Northbound South of Traffic Signal at Energy Center IV	
Jurisdiction	Energy Corridor District/City of Houston	
Agency Deployed	Energy Corridor District	
GPS Coordinates	29°46'54.62"N, 95°37'2.06"W	
Surrounding Land Uses	North	Commercial/Retail, Office
	South	Cemetery, Commercial/Retail, Multi-Family Residential
	East	Cemetery
	West	Office, Multi-Family Residential
What object was device secured to?	Light Post (Second Light Post South of Energy Center IV Traffic Signal)	
Sidewalk Width	4'	
Buffer Width	2.5'	
Street Width	Six-Lane Divided Roadway	
Parallel Parking	No	
Landscaping or Trees	No	
Sidewalk Pavement Type	Concrete	
ADA Ramps	Yes	
Sidewalk Condition	Fair (Some Debris and Edge Deterioration)	
Speed Limit	35 miles per hour	
Street Lighting	Yes	
Street Traffic Volume	40,600 (900 N. Eldridge Parkway: TxDOT 2012)	
Transit	No	
Shade	No	
Have counts been collected by H-GAC at this location before?	No	

**Trends**

- Usage is low at this location.
- Usage tends to be comparable on weekdays (8 users/day) and during weekends (7 users/day).

**Location Information: Map**



**Location Information: Photos**



Image 7: Sidewalk along Eldridge Parkway Northbound at Energy Center IV Facing North



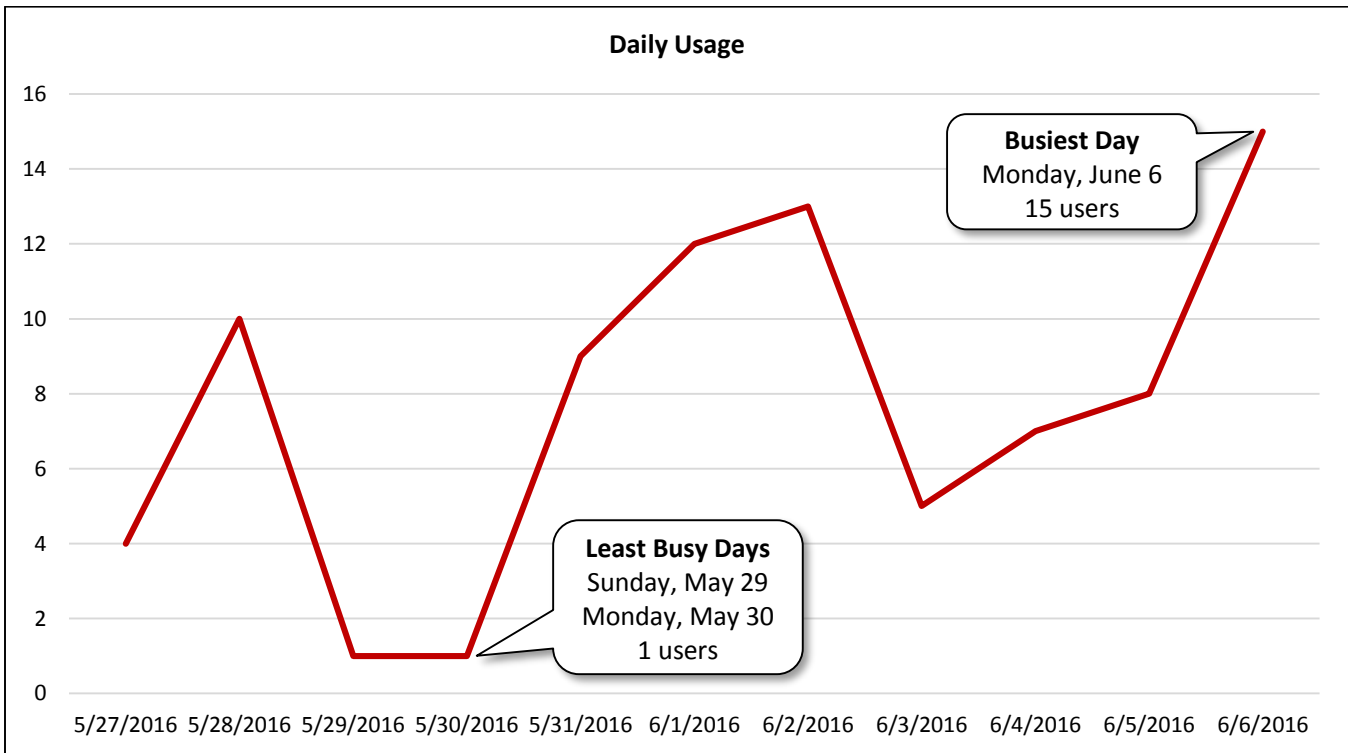
Image 8: Sidewalk along Eldridge Parkway Northbound at Energy Center IV Facing South

<b>Daily Usage</b> Eldridge Parkway Northbound at Energy Center IV				
Date	Users	Select Weather Data*		
		High Temperature (°F)	Low Temperature (°F)	Precipitation (inches)
Friday, May 27, 2016	4	84	66	1.13
Saturday, May 28, 2016	10	89	66	0
Sunday, May 29, 2016	1	88	71	0
Monday, May 30, 2016	1	86	71	0.01
Tuesday, May 31, 2016	9	88	70	0.02
Wednesday, June 1, 2016	12	87	73	0.06
Thursday, June 2, 2016	13	82	70	1.5
Friday, June 3, 2016	5	82	70	0.23
Saturday, June 4, 2016	7	82	70	0.48
Sunday, June 5, 2016	8	84	70	0.33
Monday, June 6, 2016	15	89	72	0
<b>Total</b>	85			
<b>Average Daily Usage</b>	8			
<b>Average Daily Usage (Weekday)</b>	8			
<b>Average Daily Usage (Weekend)</b>	7			

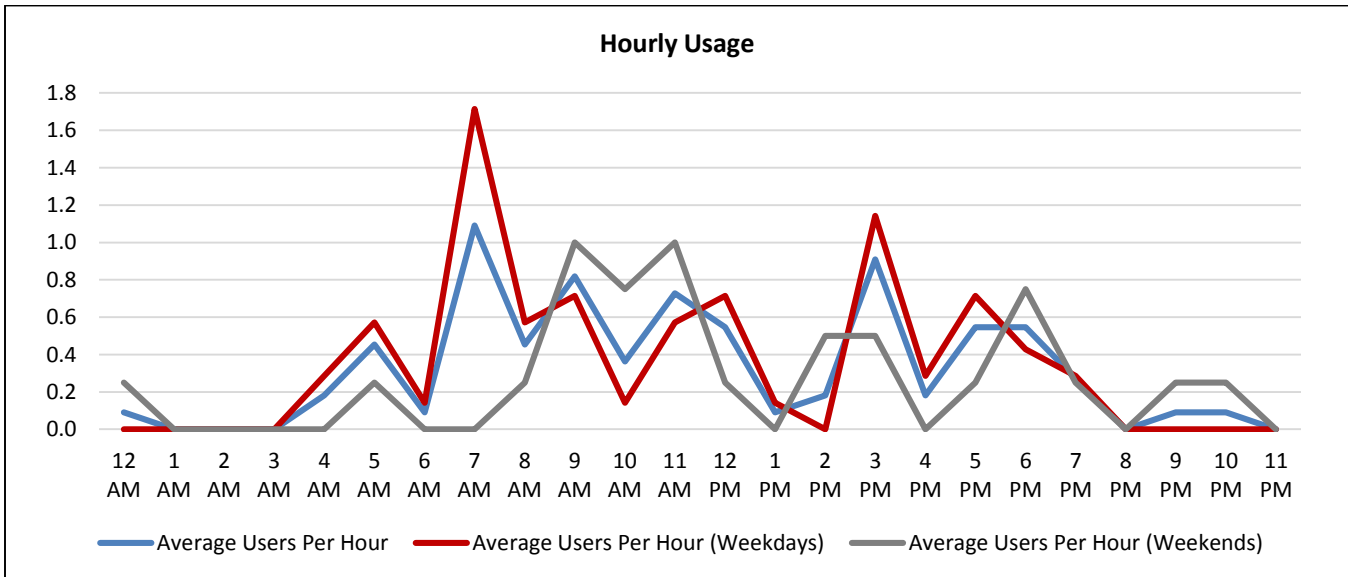
  

<b>Notes</b>	
Memorial Day: Monday, May 30, 2016	

\*Weather conditions recorded at KSGR.



<b>Hourly Usage</b> Eldridge Parkway Northbound at Energy Center IV			
<b>Time of Day</b>	<b>Average Users Per Hour</b>	<b>Average Users Per Hour (Weekdays)</b>	<b>Average Users Per Hour (Weekends)</b>
12:00 a.m.	0.1	0.0	0.3
1:00 a.m.	0.0	0.0	0.0
2:00 a.m.	0.0	0.0	0.0
3:00 a.m.	0.0	0.0	0.0
4:00 a.m.	0.2	0.3	0.0
5:00 a.m.	0.5	0.6	0.3
6:00 a.m.	0.1	0.1	0.0
7:00 a.m.	1.1	1.7	0.0
8:00 a.m.	0.5	0.6	0.3
9:00 a.m.	0.8	0.7	1.0
10:00 a.m.	0.4	0.1	0.8
11:00 a.m.	0.7	0.6	1.0
12:00 p.m.	0.5	0.7	0.3
1:00 p.m.	0.1	0.1	0.0
2:00 p.m.	0.2	0.0	0.5
3:00 p.m.	0.9	1.1	0.5
4:00 p.m.	0.2	0.3	0.0
5:00 p.m.	0.5	0.7	0.3
6:00 p.m.	0.5	0.4	0.8
7:00 p.m.	0.3	0.3	0.3
8:00 p.m.	0.0	0.0	0.0
9:00 p.m.	0.1	0.0	0.3
10:00 p.m.	0.1	0.0	0.3
11:00 p.m.	0.0	0.0	0.0



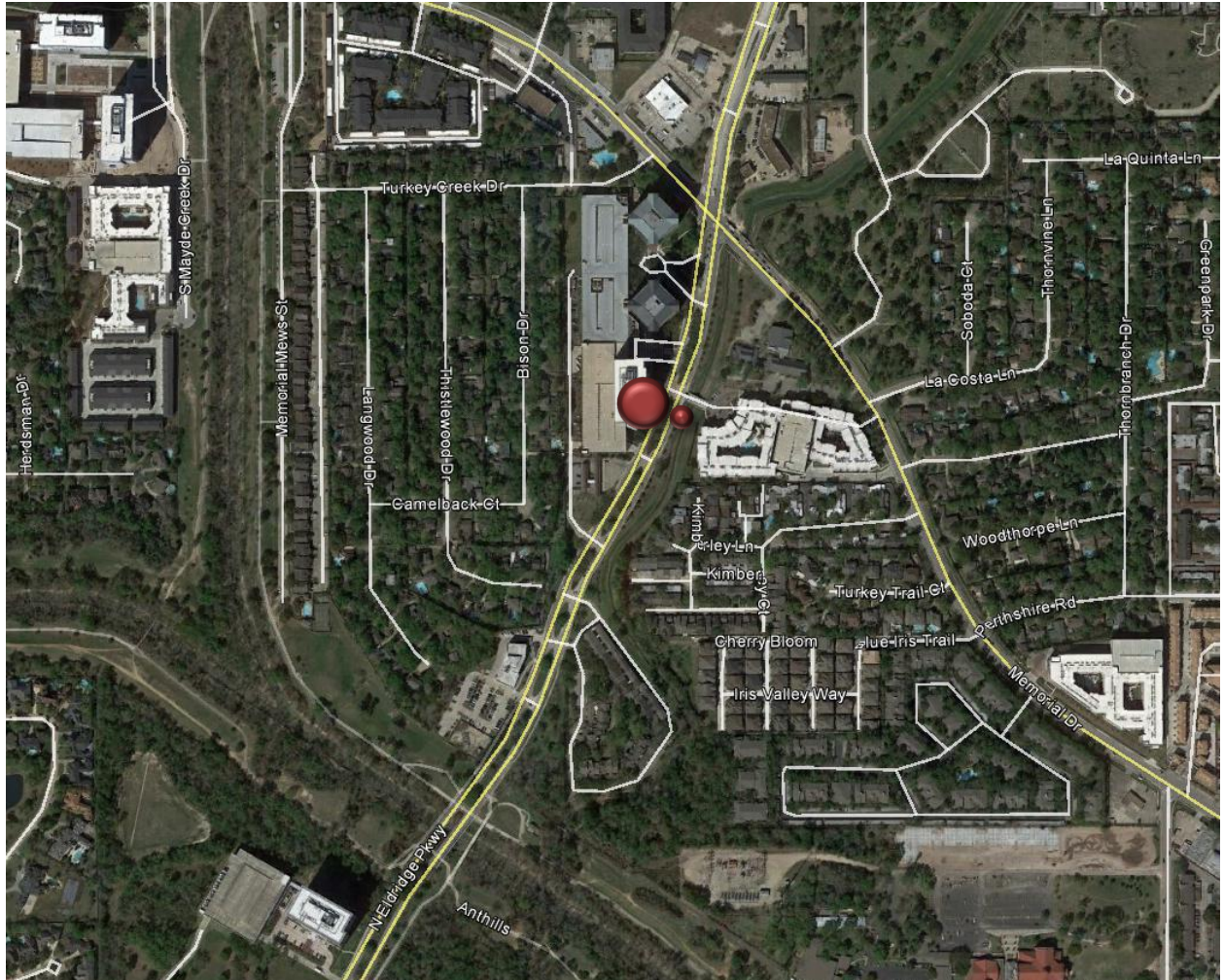
**Counter #5**

Eldridge Parkway Southbound South of Memorial Drive

Location Information		
Location Name	Eldridge Parkway Southbound South of Memorial Drive	
Location Description	Sidewalk along Eldridge Parkway Southbound South of Memorial Drive	
Jurisdiction	Energy Corridor District/City of Houston	
Agency Deployed	Energy Corridor District	
GPS Coordinates	29°46'31.93"N, 95°37'8.16"W	
Surrounding Land Uses	North	Office, Commercial/Retail
	South	Office, Single-Family Residential, Institutional (Kendall Neighborhood Library)
	East	Multi-Family Residential, Institutional (Church)
	West	Office, Single-Family Residential
What object was device secured to?	Light Post (South of Driveway to 3 Eldridge Place)	
Sidewalk Width	8'	
Buffer Width	None	
Street Width	Four-Lane Divided Roadway	
Parallel Parking	No	
Landscaping or Trees	Yes	
Sidewalk Pavement Type	Concrete	
ADA Ramps	Yes	
Sidewalk Condition	Good	
Speed Limit	35 miles per hour	
Street Lighting	Yes	
Street Traffic Volume	28,800 (1000 Eldridge Parkway: TxDOT 2012)	
Transit	Yes (METRO Bus Stop 200' North along Eldridge Parkway Southbound)	
Shade	No	
Have counts been collected by H-GAC at this location before?	No	

Trends
<ul style="list-style-type: none"> <li>• Usage tends to be higher on weekdays (52 users/day) than during weekends (28 users/day).</li> <li>• On weekdays, usage is highest midday (12:00 p.m. – 1:00 p.m.).</li> <li>• During weekends, usage is highest in the morning (7:00 a.m. – 10:00 a.m.).</li> </ul>

**Location Information: Map**



**Location Information: Photos**



Image 9: Sidewalk along Eldridge Parkway Southbound South of Memorial Drive Facing North



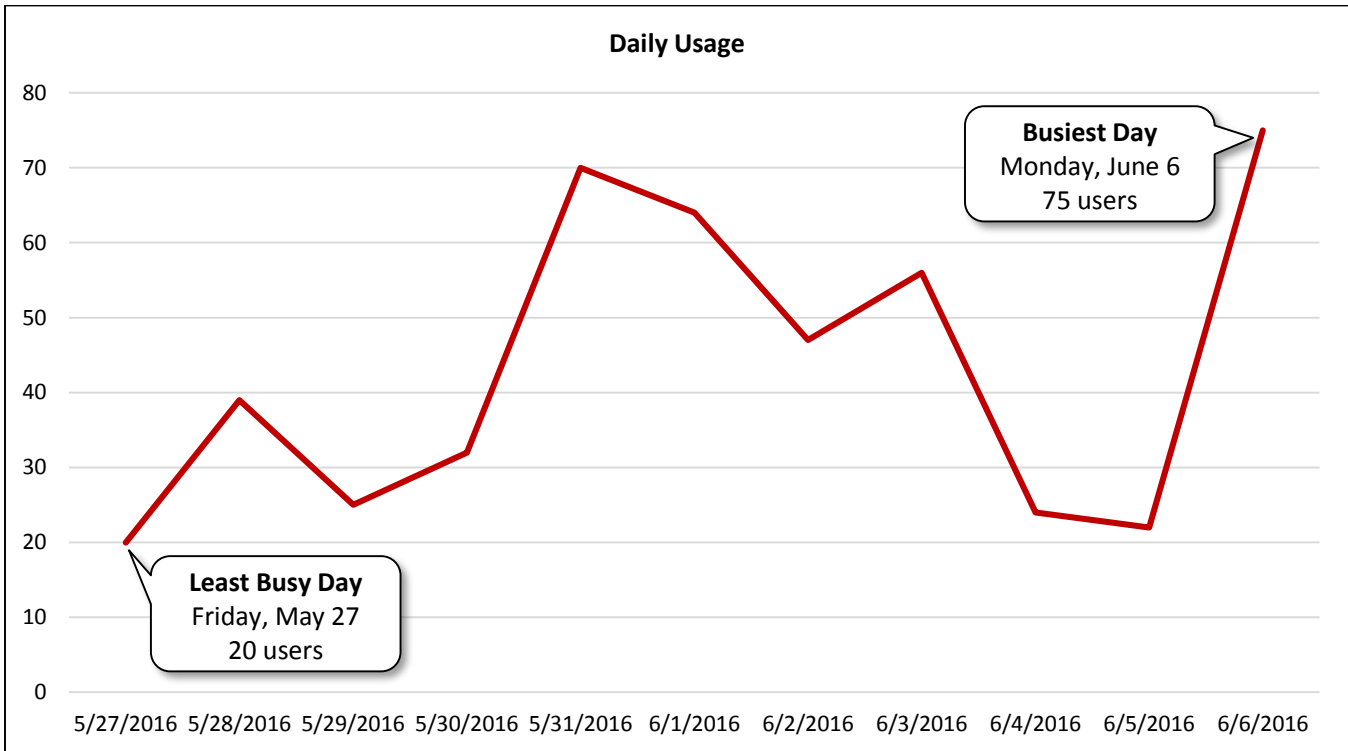
Image 10: Sidewalk along Eldridge Parkway Southbound South of Memorial Drive Facing South

<b>Daily Usage</b> Eldridge Parkway Southbound South of Memorial Drive				
Date	Users	Select Weather Data*		
		High Temperature (°F)	Low Temperature (°F)	Precipitation (inches)
Friday, May 27, 2016	20	84	66	1.13
Saturday, May 28, 2016	39	89	66	0
Sunday, May 29, 2016	25	88	71	0
Monday, May 30, 2016	32	86	71	0.01
Tuesday, May 31, 2016	70	88	70	0.02
Wednesday, June 1, 2016	64	87	73	0.06
Thursday, June 2, 2016	47	82	70	1.5
Friday, June 3, 2016	56	82	70	0.23
Saturday, June 4, 2016	24	82	70	0.48
Sunday, June 5, 2016	22	84	70	0.33
Monday, June 6, 2016	75	89	72	0
<b>Total</b>	474			
<b>Average Daily Usage</b>	43			
<b>Average Daily Usage (Weekday)</b>	52			
<b>Average Daily Usage (Weekend)</b>	28			

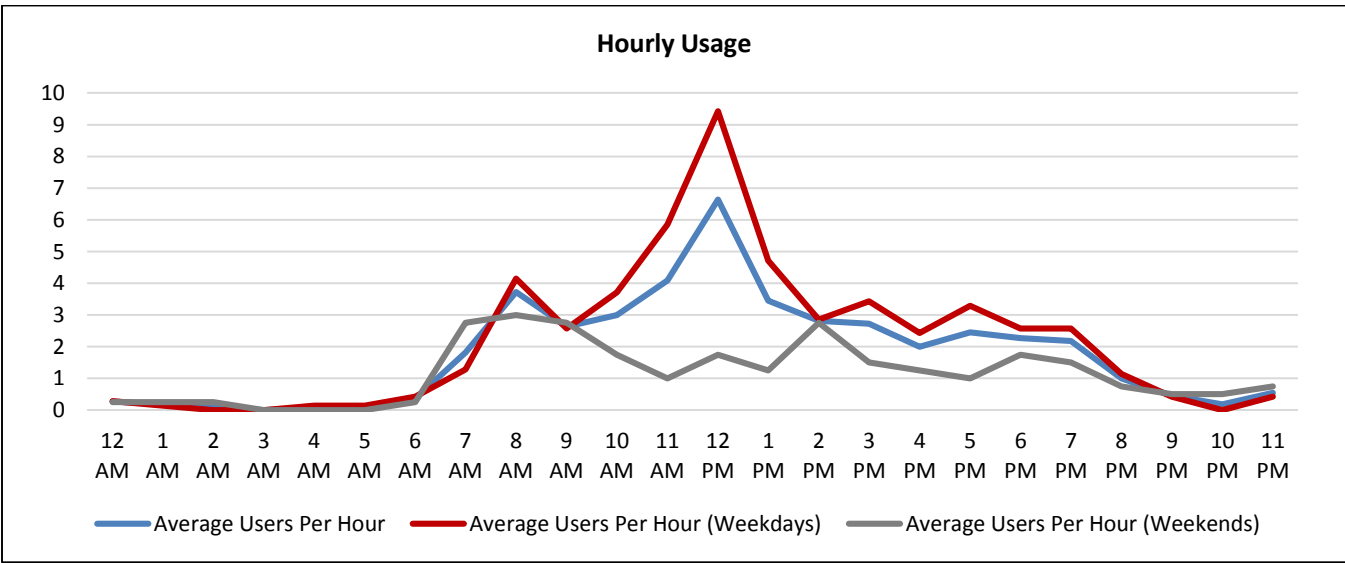
  

<b>Notes</b>	
Memorial Day: Monday, May 30, 2016	

\*Weather conditions recorded at KSGR.



<b>Hourly Usage</b>			
Eldridge Parkway Southbound South of Memorial Drive			
<b>Time of Day</b>	<b>Average Users Per Hour</b>	<b>Average Users Per Hour (Weekdays)</b>	<b>Average Users Per Hour (Weekends)</b>
12:00 a.m.	0.3	0.3	0.3
1:00 a.m.	0.2	0.1	0.3
2:00 a.m.	0.1	0.0	0.3
3:00 a.m.	0.0	0.0	0.0
4:00 a.m.	0.1	0.1	0.0
5:00 a.m.	0.1	0.1	0.0
6:00 a.m.	0.4	0.4	0.3
7:00 a.m.	1.8	1.3	2.8
8:00 a.m.	3.7	4.1	3.0
9:00 a.m.	2.6	2.6	2.8
10:00 a.m.	3.0	3.7	1.8
11:00 a.m.	4.1	5.9	1.0
12:00 p.m.	6.6	9.4	1.8
1:00 p.m.	3.5	4.7	1.3
2:00 p.m.	2.8	2.9	2.8
3:00 p.m.	2.7	3.4	1.5
4:00 p.m.	2.0	2.4	1.3
5:00 p.m.	2.5	3.3	1.0
6:00 p.m.	2.3	2.6	1.8
7:00 p.m.	2.2	2.6	1.5
8:00 p.m.	1.0	1.1	0.8
9:00 p.m.	0.5	0.4	0.5
10:00 p.m.	0.2	0.0	0.5
11:00 p.m.	0.5	0.4	0.8





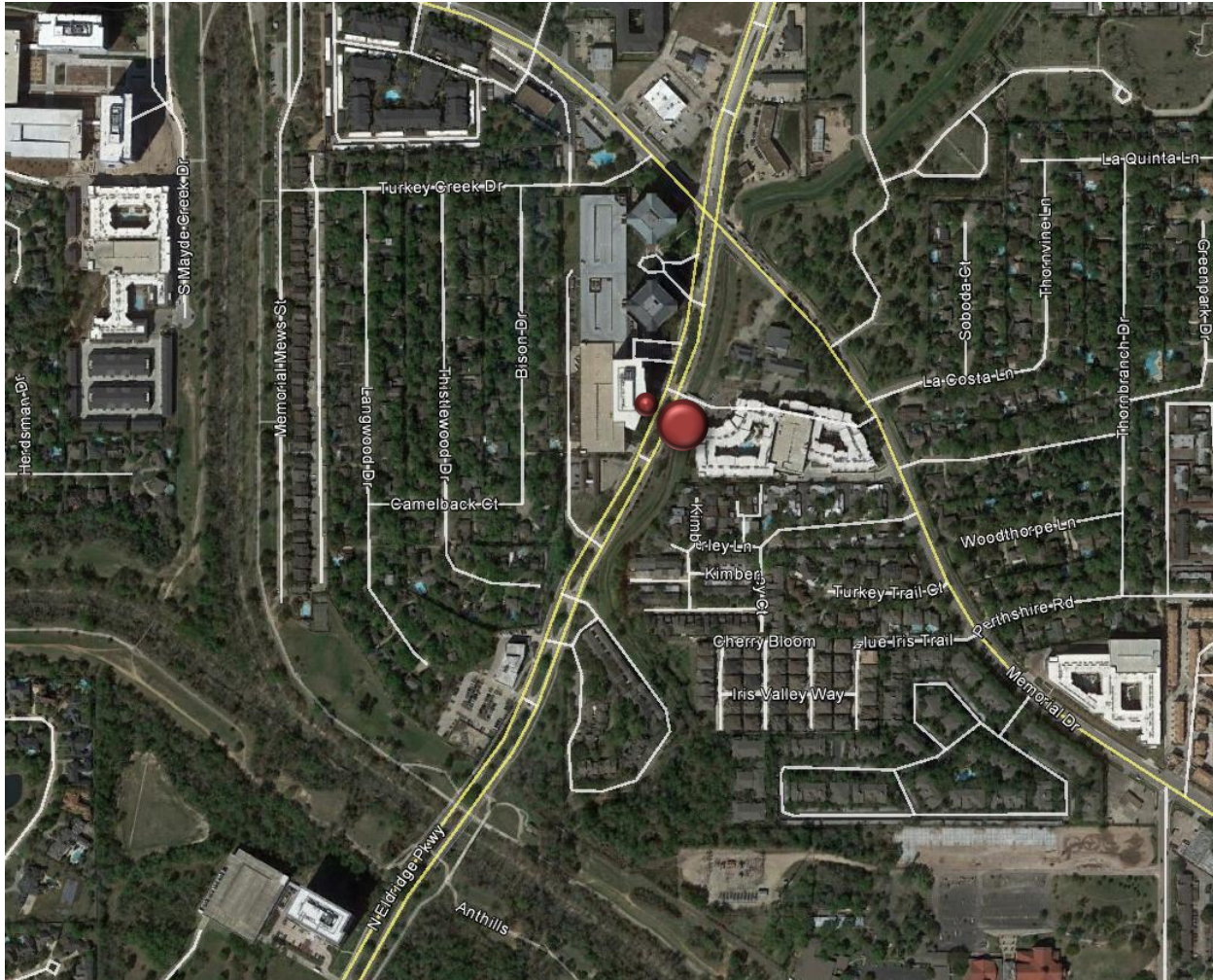
**Counter #6**

Eldridge Parkway Northbound South of Memorial Drive

Location Information		
Location Name	Eldridge Parkway Northbound South of Memorial Drive	
Location Description	Sidewalk along Eldridge Parkway Northbound South of Memorial Drive	
Jurisdiction	Energy Corridor District/City of Houston	
Agency Deployed	Energy Corridor District	
GPS Coordinates	29°46'31.78"N, 95°37'7.32"W	
Surrounding Land Uses	North	Office, Commercial/Retail
	South	Office, Single-Family Residential, Institutional (Kendall Neighborhood Library)
	East	Multi-Family Residential, Institutional (Church)
	West	Office, Single-Family Residential
What object was device secured to?	Light Post (South of Driveway to 7Seventy Apartments)	
Sidewalk Width	8'	
Buffer Width	None	
Street Width	Four-Lane Divided Roadway	
Parallel Parking	No	
Landscaping or Trees	Yes	
Sidewalk Pavement Type	Concrete	
ADA Ramps	Yes	
Sidewalk Condition	Good	
Speed Limit	35 miles per hour	
Street Lighting	Yes	
Street Traffic Volume	28,800 (1000 Eldridge Parkway: TxDOT 2012)	
Transit	Yes (METRO Bus Stop 280' South along Eldridge Parkway Northbound)	
Shade	No	
Have counts been collected by H-GAC at this location before?	No	

Trends
<ul style="list-style-type: none"> <li>• Usage tends to be comparable on weekdays (53 users/day) and during weekends (52 users/day).</li> <li>• On weekdays, usage is highest in the evening (6:00 p.m. – 8:00 p.m.).</li> <li>• During weekends, usage is highest in the morning (9:00 a.m. – 10:00 a.m.).</li> </ul>

**Location Information: Map**



**Location Information: Photos**



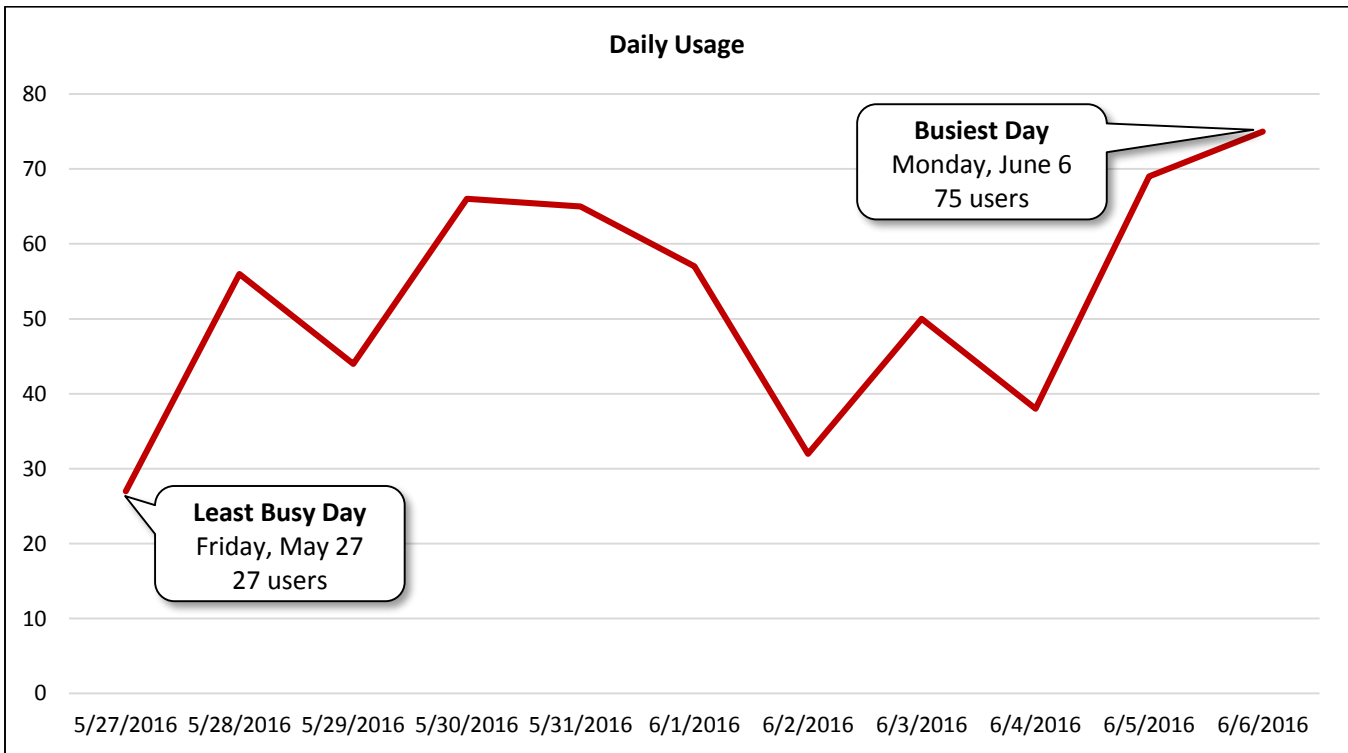
Image 11: Sidewalk along Eldridge Parkway Northbound South of Memorial Drive Facing North



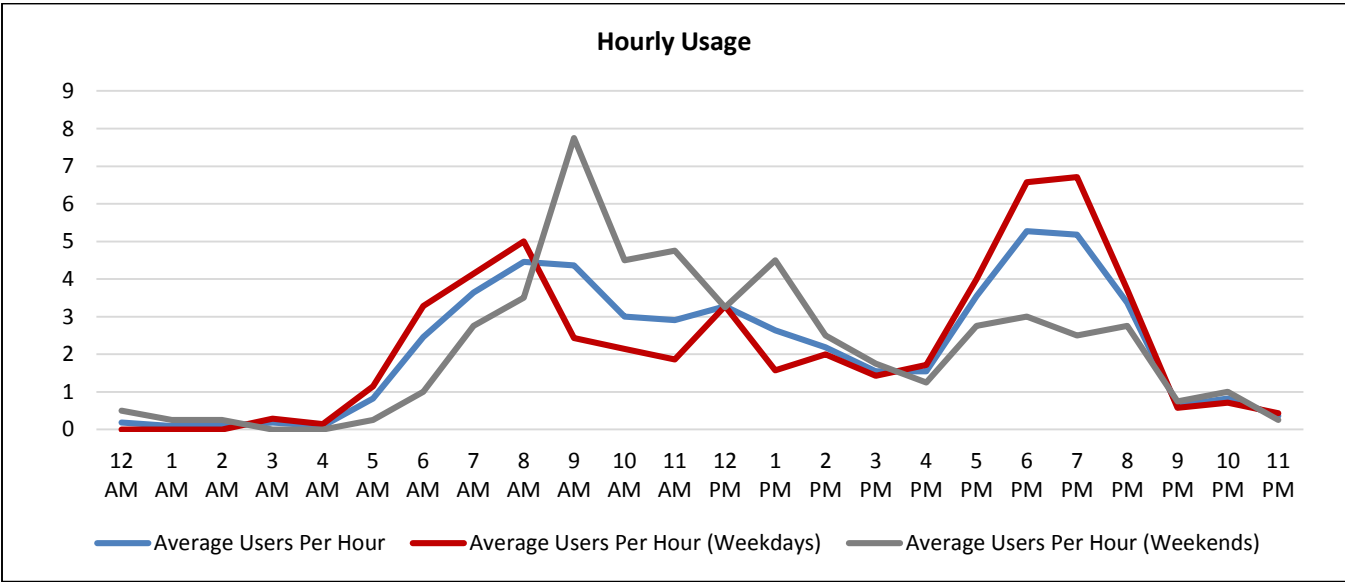
Image 12: Sidewalk along Eldridge Parkway Northbound South of Memorial Drive Facing South

<b>Daily Usage</b> Eldridge Parkway Northbound South of Memorial Drive				
Date	Users	Select Weather Data*		
		High Temperature (°F)	Low Temperature (°F)	Precipitation (inches)
Friday, May 27, 2016	27	84	66	1.13
Saturday, May 28, 2016	56	89	66	0
Sunday, May 29, 2016	44	88	71	0
Monday, May 30, 2016	66	86	71	0.01
Tuesday, May 31, 2016	65	88	70	0.02
Wednesday, June 1, 2016	57	87	73	0.06
Thursday, June 2, 2016	32	82	70	1.5
Friday, June 3, 2016	50	82	70	0.23
Saturday, June 4, 2016	38	82	70	0.48
Sunday, June 5, 2016	69	84	70	0.33
Monday, June 6, 2016	75	89	72	0
<b>Total</b>	579			
<b>Average Daily Usage</b>	53			
<b>Average Daily Usage (Weekday)</b>	53			
<b>Average Daily Usage (Weekend)</b>	52			
		<b>Notes</b>		
		Memorial Day: Monday, May 30, 2016		

\*Weather conditions recorded at KSGR.



<b>Hourly Usage</b>			
Eldridge Parkway Northbound South of Memorial Drive			
<b>Time of Day</b>	<b>Average Users Per Hour</b>	<b>Average Users Per Hour (Weekdays)</b>	<b>Average Users Per Hour (Weekends)</b>
12:00 a.m.	0.2	0.0	0.5
1:00 a.m.	0.1	0.0	0.3
2:00 a.m.	0.1	0.0	0.3
3:00 a.m.	0.2	0.3	0.0
4:00 a.m.	0.1	0.1	0.0
5:00 a.m.	0.8	1.1	0.3
6:00 a.m.	2.5	3.3	1.0
7:00 a.m.	3.6	4.1	2.8
8:00 a.m.	4.5	5.0	3.5
9:00 a.m.	4.4	2.4	7.8
10:00 a.m.	3.0	2.1	4.5
11:00 a.m.	2.9	1.9	4.8
12:00 p.m.	3.3	3.3	3.3
1:00 p.m.	2.6	1.6	4.5
2:00 p.m.	2.2	2.0	2.5
3:00 p.m.	1.5	1.4	1.8
4:00 p.m.	1.5	1.7	1.3
5:00 p.m.	3.5	4.0	2.8
6:00 p.m.	5.3	6.6	3.0
7:00 p.m.	5.2	6.7	2.5
8:00 p.m.	3.4	3.7	2.8
9:00 p.m.	0.6	0.6	0.8
10:00 p.m.	0.8	0.7	1.0
11:00 p.m.	0.4	0.4	0.3



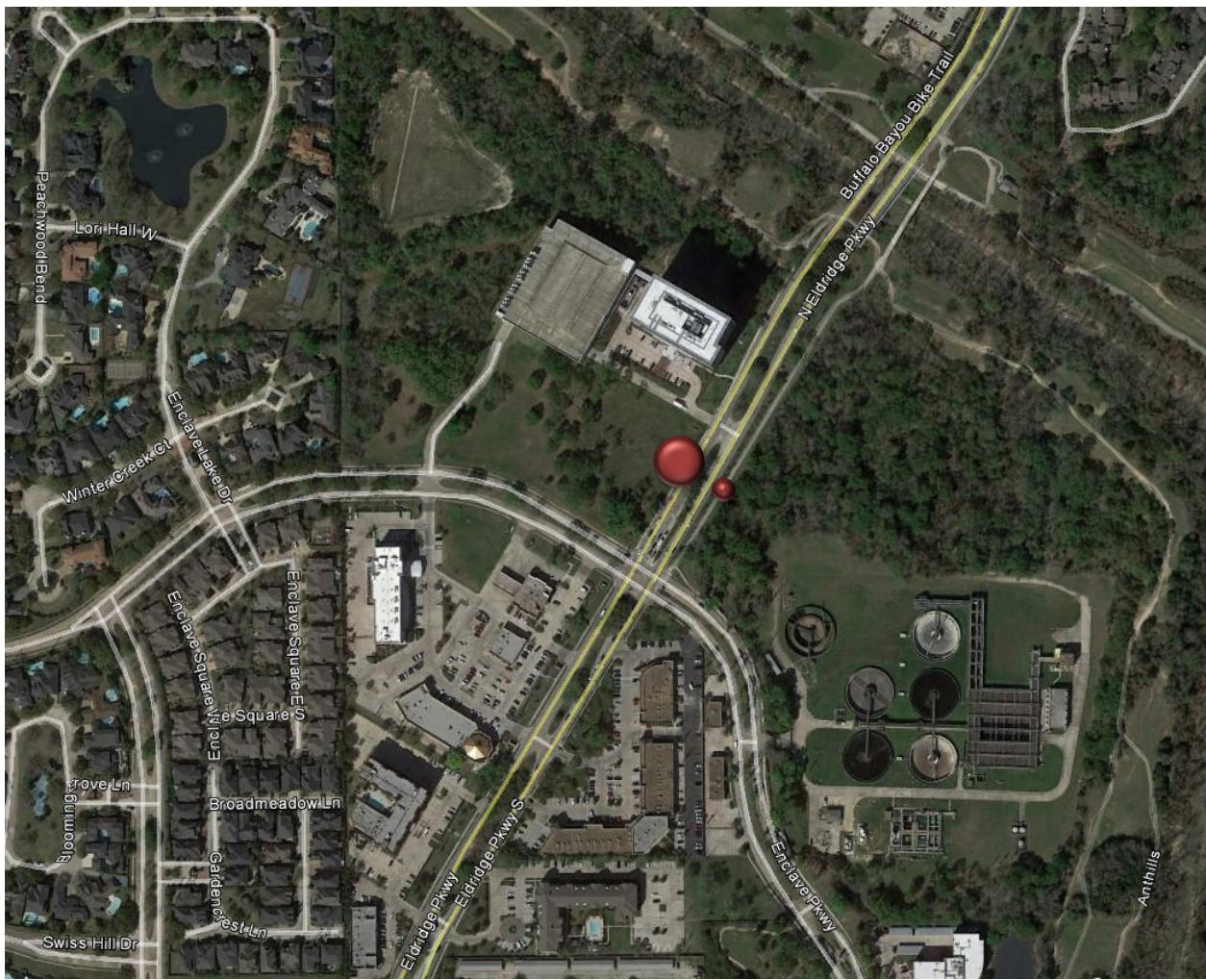
**Counter #7**

Eldridge Parkway Southbound North of Enclave Parkway

Location Information		
Location Name	Eldridge Parkway Southbound North of Enclave Parkway	
Location Description	Sidewalk along Eldridge Parkway Southbound North of Enclave Parkway	
Jurisdiction	Energy Corridor District/City of Houston	
Agency Deployed	Energy Corridor District	
GPS Coordinates	29°46'9.98"N, 95°37'22.23"W	
Surrounding Land Uses	North	Vacant Land, Office, Park (Terry Hershey Park)
	South	Commercial/Retail, Hotel
	East	Vacant Land, Wastewater Treatment Facility
	West	Vacant Land, Commercial/Retail, Hotel, Single-Family Residential
What object was device secured to?	Light Post (Second Light Post North of Enclave Parkway)	
Sidewalk Width	8'	
Buffer Width	None	
Street Width	Four-Lane Divided Roadway	
Parallel Parking	No	
Landscaping or Trees	No	
Sidewalk Pavement Type	Concrete	
ADA Ramps	Yes	
Sidewalk Condition	Good	
Speed Limit	35 miles per hour	
Street Lighting	Yes	
Street Traffic Volume	28,800 (1000 Eldridge Parkway: TxDOT 2012)	
Transit	Yes (METRO Bus Stop 200' North along Eldridge Parkway Southbound)	
Shade	No	
Have counts been collected by H-GAC at this location before?	No	

Trends
<ul style="list-style-type: none"> <li>Usage tends to be higher on weekdays (94 users/day) than during weekends (73 users/day).</li> <li>On weekdays, usage is highest midday (11:00 a.m. – 1:00 p.m.).</li> <li>During weekends, usage is highest in the morning (9:00 a.m. – 12:00 p.m.).</li> </ul>

**Location Information: Map**



**Location Information: Photos**



Image 13: Sidewalk along Eldridge Parkway Southbound North of Enclave Parkway Facing North



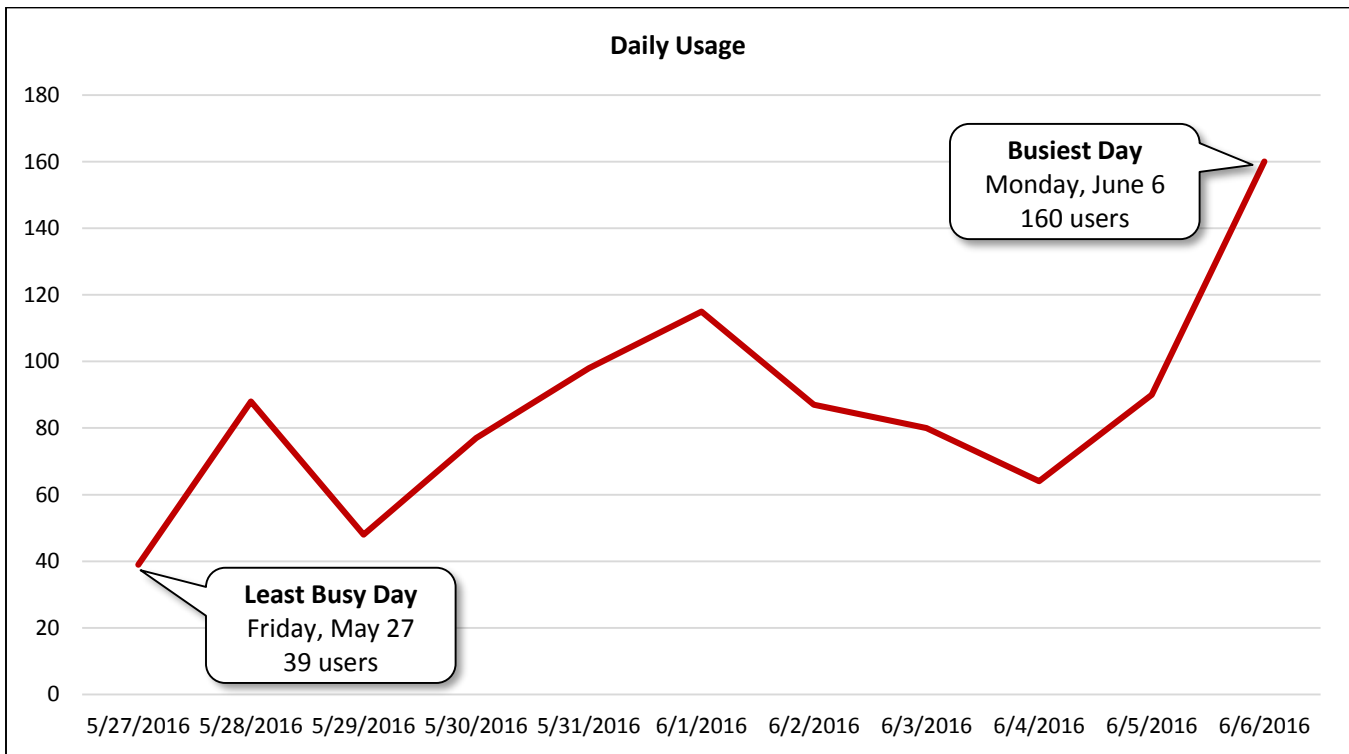
Image 14: Sidewalk along Eldridge Parkway Southbound North of Enclave Parkway Facing South

<b>Daily Usage</b> Eldridge Parkway Southbound North of Enclave Parkway				
Date	Users	Select Weather Data*		
		High Temperature (°F)	Low Temperature (°F)	Precipitation (inches)
Friday, May 27, 2016	39	84	66	1.13
Saturday, May 28, 2016	88	89	66	0
Sunday, May 29, 2016	48	88	71	0
Monday, May 30, 2016	77	86	71	0.01
Tuesday, May 31, 2016	98	88	70	0.02
Wednesday, June 1, 2016	115	87	73	0.06
Thursday, June 2, 2016	87	82	70	1.5
Friday, June 3, 2016	80	82	70	0.23
Saturday, June 4, 2016	64	82	70	0.48
Sunday, June 5, 2016	90	84	70	0.33
Monday, June 6, 2016	160	89	72	0

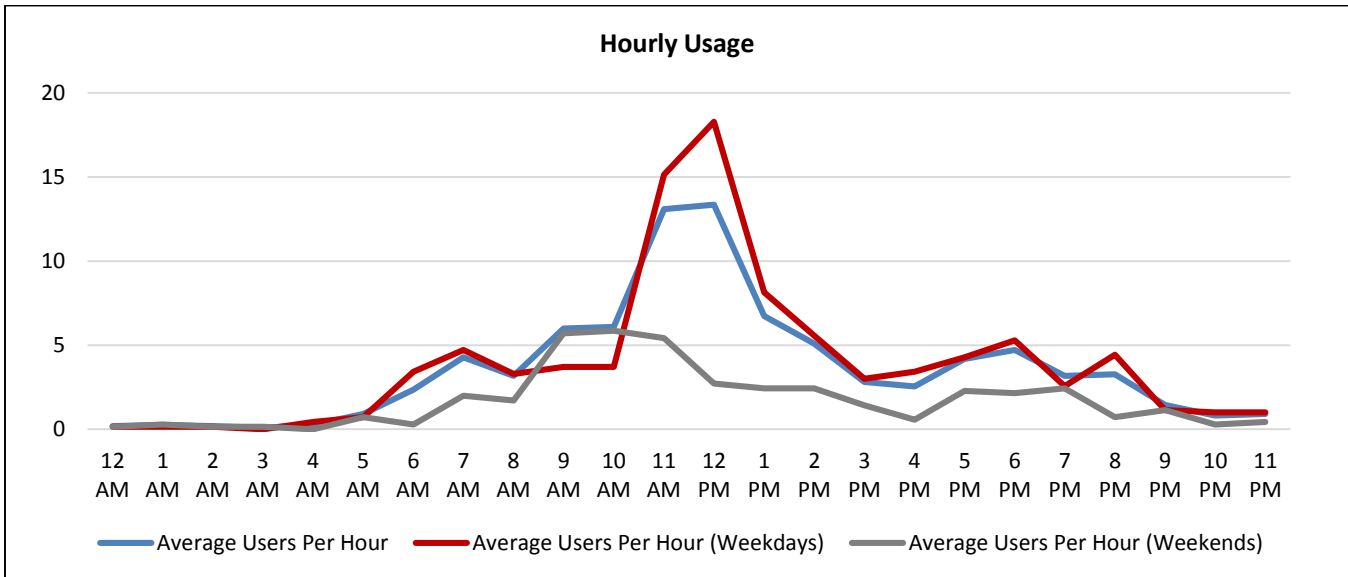
<b>Total</b>	946
<b>Average Daily Usage</b>	86
<b>Average Daily Usage (Weekday)</b>	94
<b>Average Daily Usage (Weekend)</b>	73

Notes
Memorial Day: Monday, May 30, 2016

\*Weather conditions recorded at KSGR.



<b>Hourly Usage</b> Eldridge Parkway Southbound North of Enclave Parkway			
<b>Time of Day</b>	<b>Average Users Per Hour</b>	<b>Average Users Per Hour (Weekdays)</b>	<b>Average Users Per Hour (Weekends)</b>
12:00 a.m.	0.2	0.1	0.1
1:00 a.m.	0.3	0.1	0.3
2:00 a.m.	0.2	0.1	0.1
3:00 a.m.	0.1	0.0	0.1
4:00 a.m.	0.3	0.4	0.0
5:00 a.m.	0.9	0.7	0.7
6:00 a.m.	2.4	3.4	0.3
7:00 a.m.	4.3	4.7	2.0
8:00 a.m.	3.2	3.3	1.7
9:00 a.m.	6.0	3.7	5.7
10:00 a.m.	6.1	3.7	5.9
11:00 a.m.	13.1	15.1	5.4
12:00 p.m.	13.4	18.3	2.7
1:00 p.m.	6.7	8.1	2.4
2:00 p.m.	5.1	5.6	2.4
3:00 p.m.	2.8	3.0	1.4
4:00 p.m.	2.5	3.4	0.6
5:00 p.m.	4.2	4.3	2.3
6:00 p.m.	4.7	5.3	2.1
7:00 p.m.	3.2	2.6	2.4
8:00 p.m.	3.3	4.4	0.7
9:00 p.m.	1.5	1.1	1.1
10:00 p.m.	0.8	1.0	0.3
11:00 p.m.	0.9	1.0	0.4





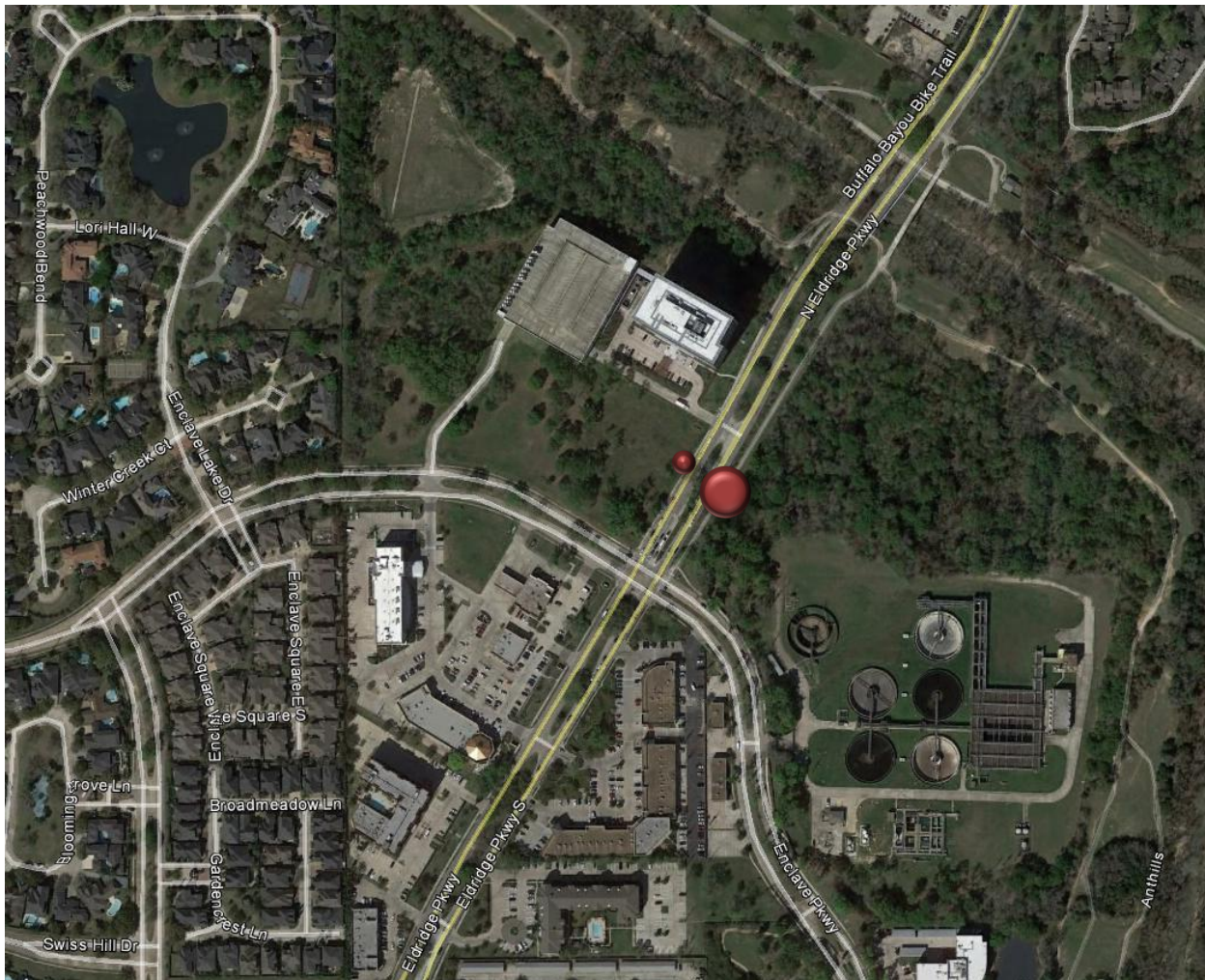
**Counter A**

Eldridge Parkway Northbound North of Enclave Parkway

Location Information		
Location Name	Eldridge Parkway Northbound North of Enclave Parkway	
Location Description	Shared-Use Path along Eldridge Parkway Northbound North of Enclave Parkway	
Jurisdiction	Energy Corridor District/City of Houston	
Agency Deployed	Energy Corridor District	
GPS Coordinates	29°46'9.38"N, 95°37'21.54"W	
Surrounding Land Uses	North	Vacant Land, Office, Park (Terry Hershey Park)
	South	Commercial/Retail, Hotel
	East	Vacant Land, Wastewater Treatment Facility
	West	Vacant Land, Commercial/Retail, Hotel, Single-Family Residential
What object was device secured to?	Light Post (Second Light Post North of Enclave Parkway)	
Sidewalk Width	10'	
Buffer Width	13'	
Street Width	Four-Lane Divided Roadway	
Parallel Parking	No	
Landscaping or Trees	Yes	
Sidewalk Pavement Type	Asphalt	
ADA Ramps	Yes	
Sidewalk Condition	Fair (Some Minor Cracks)	
Speed Limit	35 miles per hour	
Street Lighting	Yes	
Street Traffic Volume	28,800 (1000 Eldridge Parkway: TxDOT 2012)	
Transit	Yes (METRO Bus Stop 320' South along Eldridge Parkway Northbound)	
Shade	Yes	
Have counts been collected by H-GAC at this location before?	No	
Notes	<b>Counter A malfunctioned and did not accurately collect data during the deployment period.</b>	

Trends
<b>Counter A malfunctioned and did not accurately collect data during the deployment period.</b>

**Location Information: Map**



**Location Information: Photos**



Image 15: Sidewalk along Eldridge Parkway Northbound North of Enclave Parkway Facing North



Image 16: Sidewalk along Eldridge Parkway Northbound North of Enclave Parkway Facing South

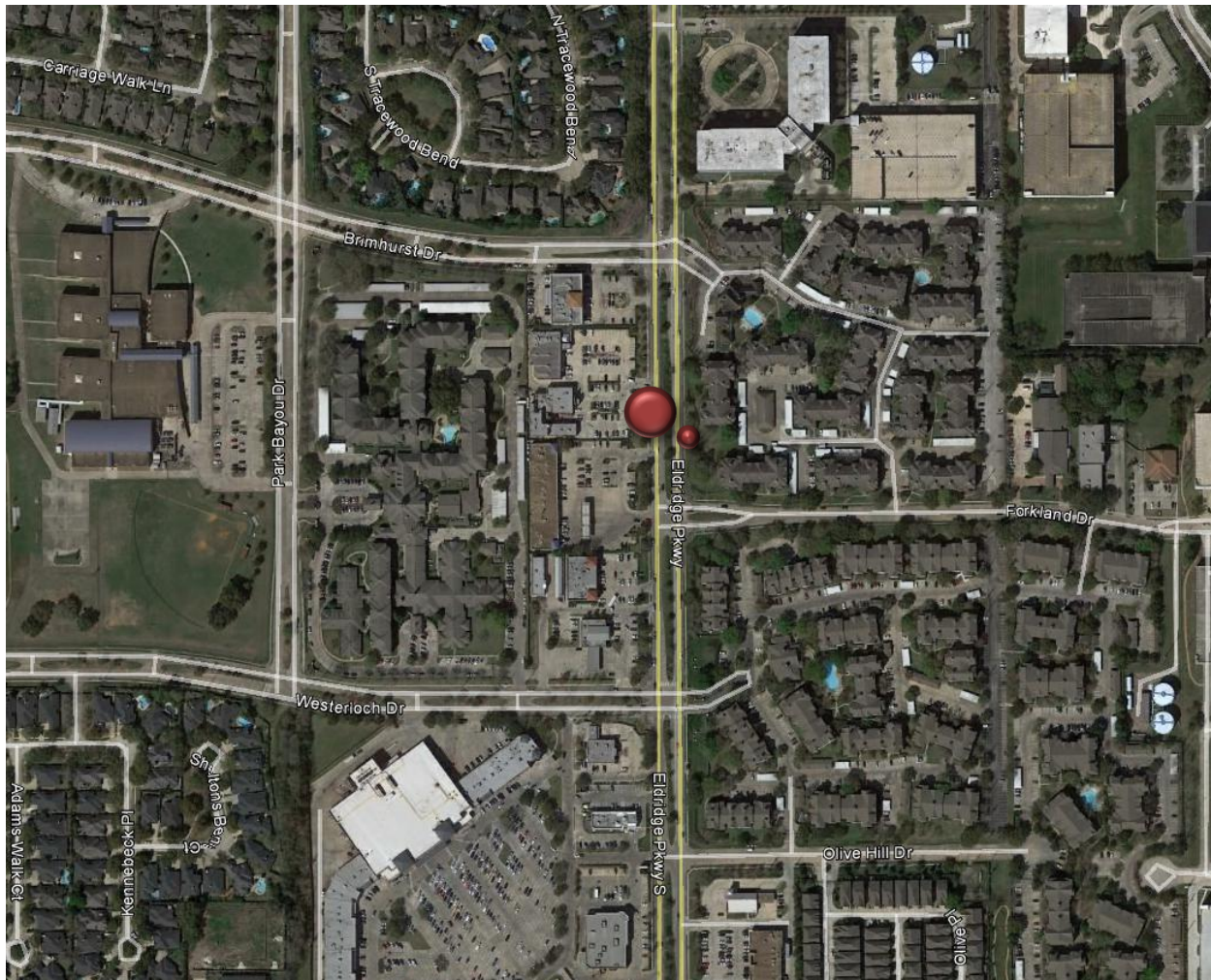
**Counter B**

Eldridge Parkway Southbound South of Brimhurst Drive

Location Information		
Location Name	Eldridge Parkway Southbound South of Brimhurst Drive	
Location Description	Sidewalk along Eldridge Parkway Southbound South of Brimhurst Drive	
Jurisdiction	Energy Corridor District/City of Houston	
Agency Deployed	Energy Corridor District	
GPS Coordinates	29°45'36.84"N, 95°37'31.71"W	
Surrounding Land Uses	North	Commercial/Retail, Multi-Family Residential, Single-Family Residential, Office
	South	Commercial/Retail, Multi-Family Residential
	East	Multi-Family Residential
	West	Commercial/Retail, Multi-Family Residential
What object was device secured to?	Light Post (Third Light Post South of Brimhurst Drive)	
Sidewalk Width	4'	
Buffer Width	4'	
Street Width	Four-Lane Divided Roadway	
Parallel Parking	No	
Landscaping or Trees	Yes	
Sidewalk Pavement Type	Concrete	
ADA Ramps	Yes	
Sidewalk Condition	Good	
Speed Limit	35 miles per hour	
Street Lighting	Yes	
Street Traffic Volume	27,070 (1500 Eldridge Parkway: TxDOT 2012)	
Transit	Yes (METRO Bus Stop 450' North along Eldridge Parkway Northbound)	
Shade	No	
Have counts been collected by H-GAC at this location before?	No	

Trends
<ul style="list-style-type: none"> <li>• Usage tends to be higher on weekdays (72 users/day) than during weekends (57 users/day).</li> <li>• On weekdays, usage peaks in the late morning (10:00 a.m. – 11:00 a.m.) and late evening (8:00 p.m. – 9:00 p.m.).</li> <li>• During weekends, usage remains steady through the morning and into the early afternoon (9:00 a.m. – 1:00 p.m.).</li> </ul>

**Location Information: Map**



**Location Information: Photos**



Image 17: Sidewalk along Eldridge Parkway Southbound South of Brimhurst Drive Facing North



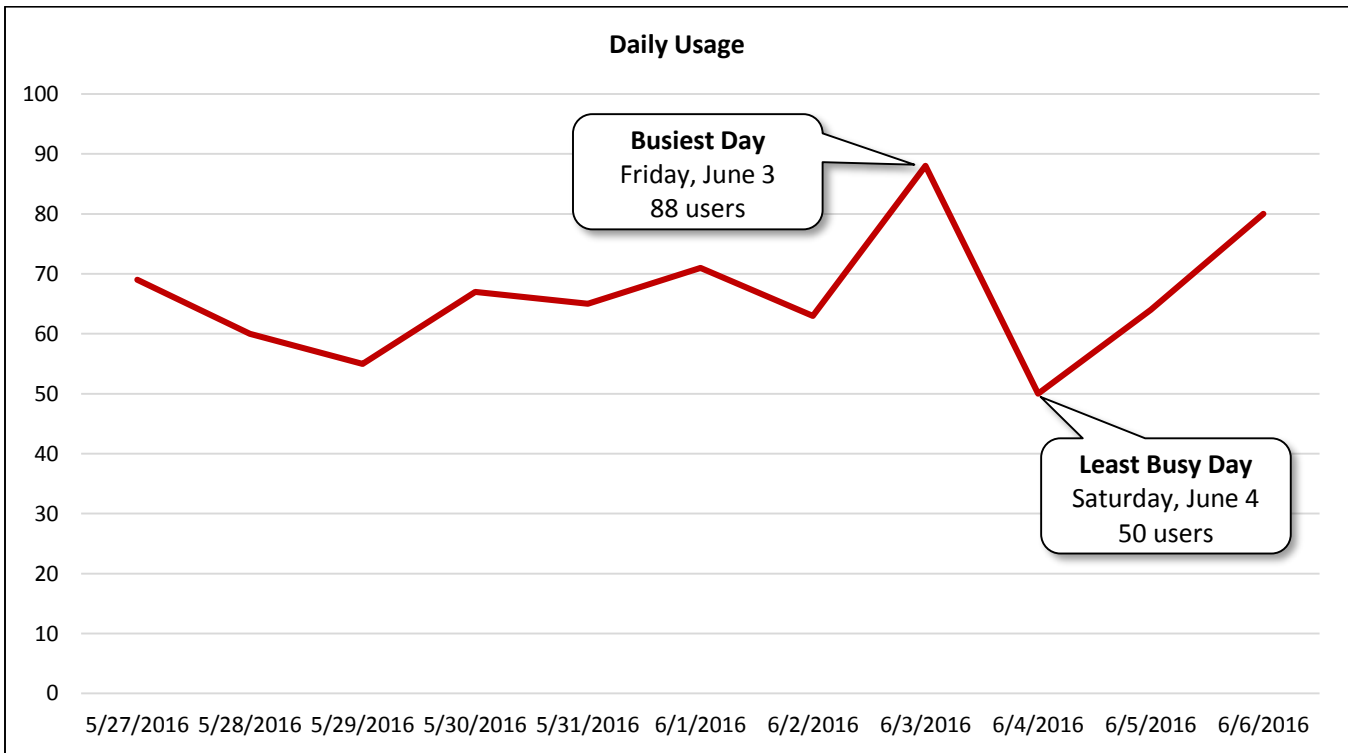
Image 18: Sidewalk along Eldridge Parkway Southbound South of Brimhurst Drive Facing South

<b>Daily Usage</b> Eldridge Parkway Southbound South of Brimhurst Drive				
Date	Users	Select Weather Data*		
		High Temperature (°F)	Low Temperature (°F)	Precipitation (inches)
Friday, May 27, 2016	69	84	66	1.13
Saturday, May 28, 2016	60	89	66	0
Sunday, May 29, 2016	55	88	71	0
Monday, May 30, 2016	67	86	71	0.01
Tuesday, May 31, 2016	65	88	70	0.02
Wednesday, June 1, 2016	71	87	73	0.06
Thursday, June 2, 2016	63	82	70	1.5
Friday, June 3, 2016	88	82	70	0.23
Saturday, June 4, 2016	50	82	70	0.48
Sunday, June 5, 2016	64	84	70	0.33
Monday, June 6, 2016	80	89	72	0
<b>Total</b>	732			
<b>Average Daily Usage</b>	67			
<b>Average Daily Usage (Weekday)</b>	72			
<b>Average Daily Usage (Weekend)</b>	57			

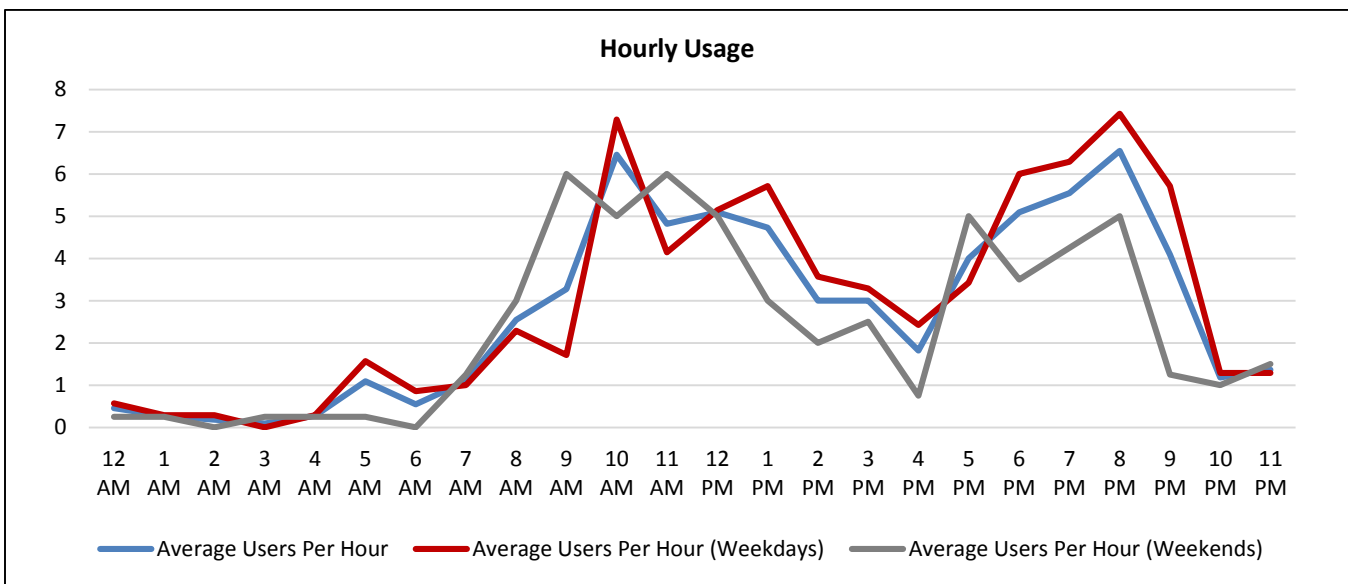
  

<b>Notes</b>	
Memorial Day: Monday, May 30, 2016	

\*Weather conditions recorded at KSGR.



<b>Hourly Usage</b> Eldridge Parkway Southbound South of Brimhurst Drive			
<b>Time of Day</b>	<b>Average Users Per Hour</b>	<b>Average Users Per Hour (Weekdays)</b>	<b>Average Users Per Hour (Weekends)</b>
12:00 a.m.	0.5	0.6	0.3
1:00 a.m.	0.3	0.3	0.3
2:00 a.m.	0.2	0.3	0.0
3:00 a.m.	0.1	0.0	0.3
4:00 a.m.	0.3	0.3	0.3
5:00 a.m.	1.1	1.6	0.3
6:00 a.m.	0.5	0.9	0.0
7:00 a.m.	1.1	1.0	1.3
8:00 a.m.	2.5	2.3	3.0
9:00 a.m.	3.3	1.7	6.0
10:00 a.m.	6.5	7.3	5.0
11:00 a.m.	4.8	4.1	6.0
12:00 p.m.	5.1	5.1	5.0
1:00 p.m.	4.7	5.7	3.0
2:00 p.m.	3.0	3.6	2.0
3:00 p.m.	3.0	3.3	2.5
4:00 p.m.	1.8	2.4	0.8
5:00 p.m.	4.0	3.4	5.0
6:00 p.m.	5.1	6.0	3.5
7:00 p.m.	5.5	6.3	4.3
8:00 p.m.	6.5	7.4	5.0
9:00 p.m.	4.1	5.7	1.3
10:00 p.m.	1.2	1.3	1.0
11:00 p.m.	1.4	1.3	1.5



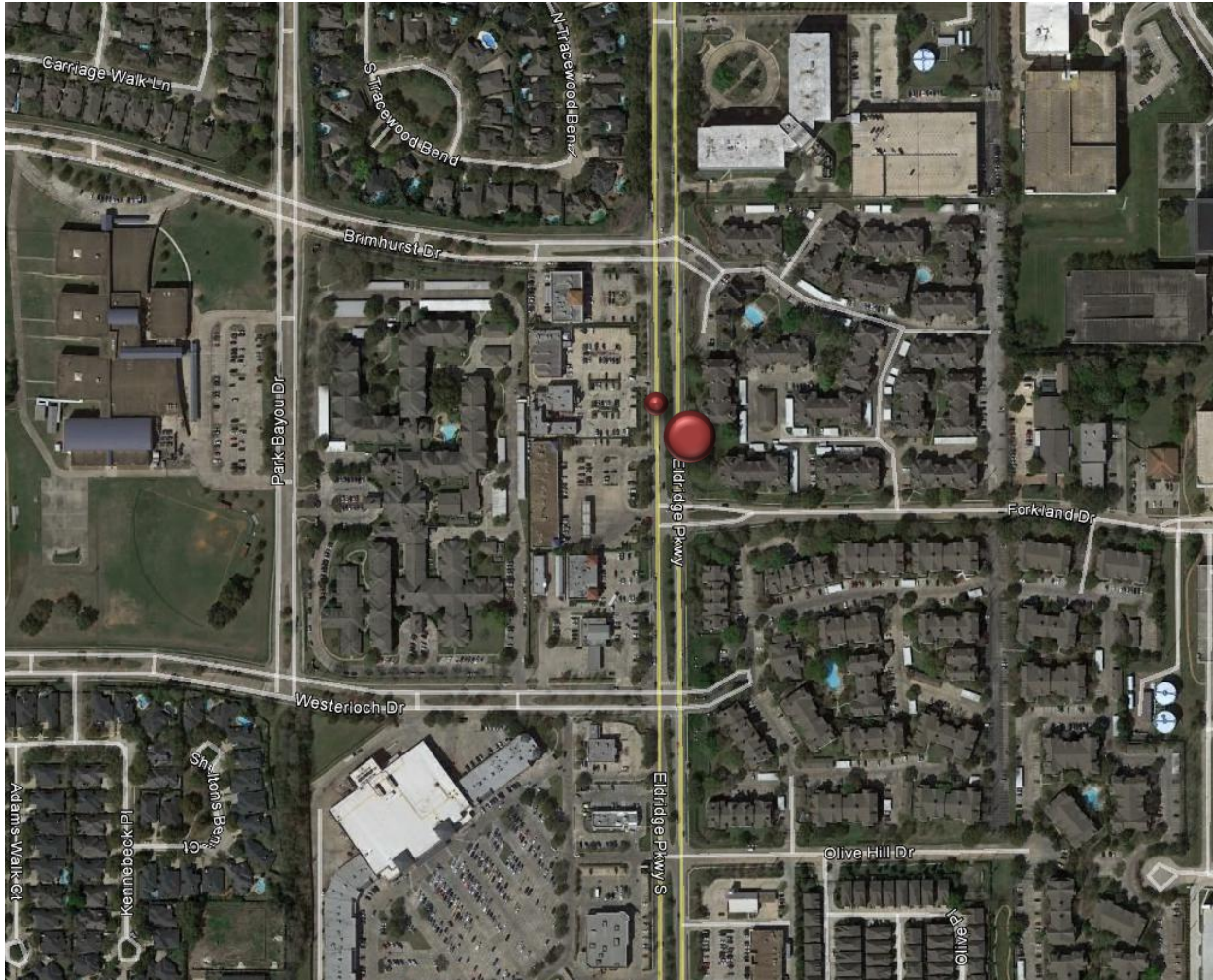
**Counter C**

Eldridge Parkway Northbound South of Brimhurst Drive

Location Information		
Location Name	Eldridge Parkway Northbound South of Brimhurst Drive	
Location Description	Sidewalk along Eldridge Parkway Northbound South of Brimhurst Drive	
Jurisdiction	Energy Corridor District/City of Houston	
Agency Deployed	Energy Corridor District	
GPS Coordinates	29°45'36.10"N, 95°37'30.75"W	
Surrounding Land Uses	North	Commercial/Retail, Multi-Family Residential, Single-Family Residential, Office
	South	Commercial/Retail, Multi-Family Residential
	East	Multi-Family Residential
	West	Commercial/Retail, Multi-Family Residential
What object was device secured to?	School Zone Warning Sign North of Forkland Drive	
Sidewalk Width	4'	
Buffer Width	4'	
Street Width	Four-Lane Divided Roadway	
Parallel Parking	No	
Landscaping or Trees	Yes	
Sidewalk Pavement Type	Concrete	
ADA Ramps	Yes	
Sidewalk Condition	Good	
Speed Limit	35 miles per hour	
Street Lighting	Yes	
Street Traffic Volume	27,070 (1500 Eldridge Parkway: TxDOT 2012)	
Transit	Yes (METRO Bus Stop 375' North along Eldridge Parkway Northbound)	
Shade	Intermittent	
Have counts been collected by H-GAC at this location before?	No	

Trends
<ul style="list-style-type: none"> <li>Usage tends to be higher during weekends (94 users/day) than on weekdays (73 users/day).</li> <li>On weekdays, usage varies throughout the day, peaking in the morning (8:00 a.m. – 9:00 a.m.), midday (11:00 a.m. – 1:00 p.m.), and evening (5:00 p.m. – 9:00 p.m.).</li> <li>During weekends, usage is highest in the morning (9:00 a.m. – 12:00 p.m.).</li> </ul>

**Location Information: Map**



**Location Information: Photos**



Image 19: Sidewalk along Eldridge Parkway Northbound South of Brimhurst Drive Facing North



Image 20: Sidewalk along Eldridge Parkway Northbound South of Brimhurst Drive Facing South

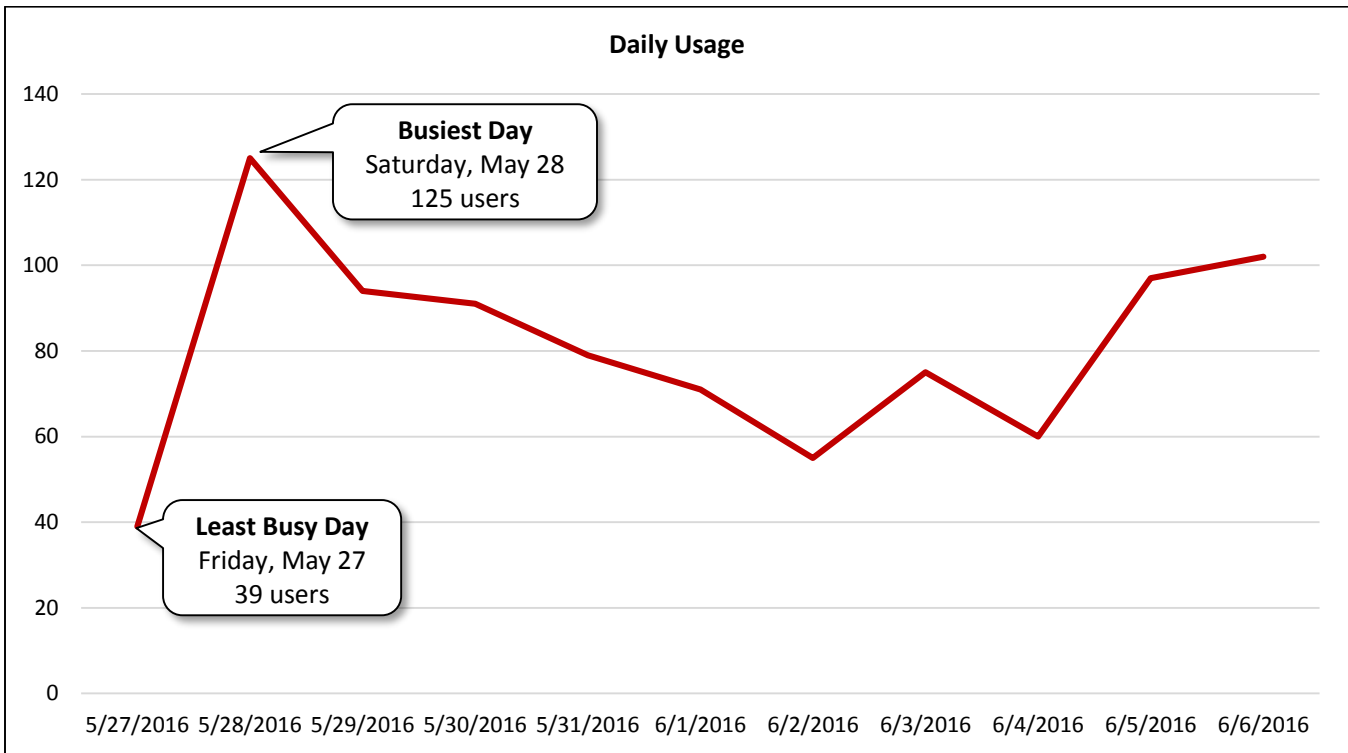


<b>Daily Usage</b> Eldridge Parkway Northbound South of Brimhurst Drive				
Date	Users	Select Weather Data*		
		High Temperature (°F)	Low Temperature (°F)	Precipitation (inches)
Friday, May 27, 2016	39	84	66	1.13
Saturday, May 28, 2016	125	89	66	0
Sunday, May 29, 2016	94	88	71	0
Monday, May 30, 2016	91	86	71	0.01
Tuesday, May 31, 2016	79	88	70	0.02
Wednesday, June 1, 2016	71	87	73	0.06
Thursday, June 2, 2016	55	82	70	1.5
Friday, June 3, 2016	75	82	70	0.23
Saturday, June 4, 2016	60	82	70	0.48
Sunday, June 5, 2016	97	84	70	0.33
Monday, June 6, 2016	102	89	72	0
<b>Total</b>	888			
<b>Average Daily Usage</b>	81			
<b>Average Daily Usage (Weekday)</b>	73			
<b>Average Daily Usage (Weekend)</b>	94			

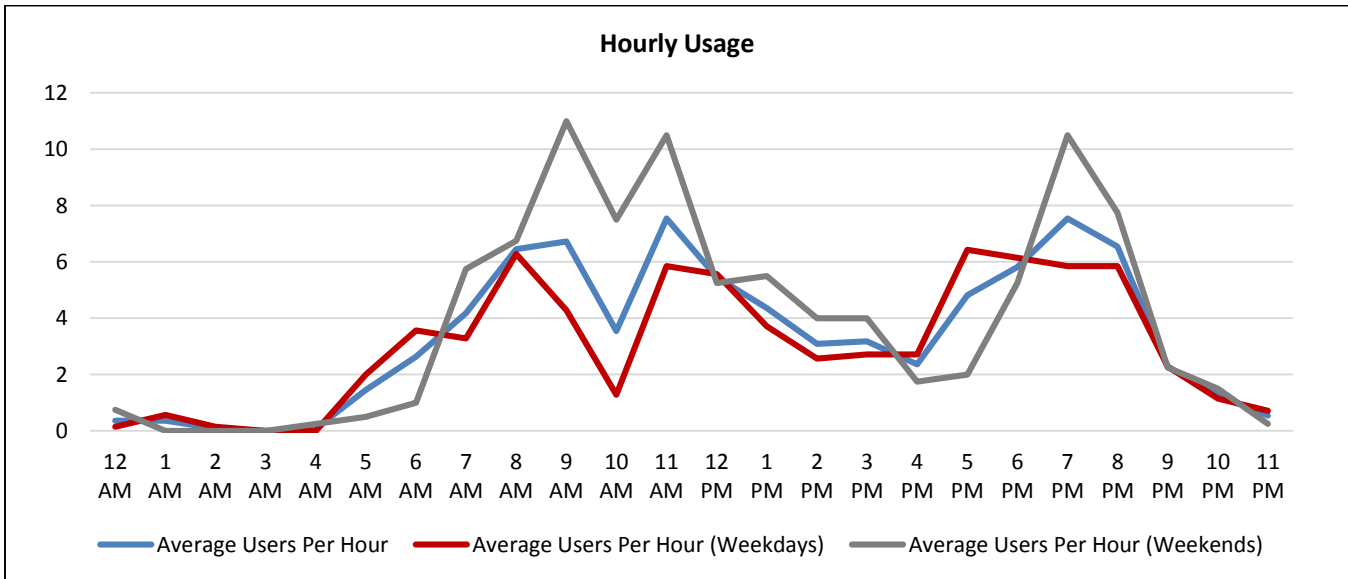
  

<b>Notes</b>	
Memorial Day: Monday, May 30, 2016	

\*Weather conditions recorded at KSGR.



<b>Hourly Usage</b> Eldridge Parkway Northbound South of Brimhurst Drive			
<b>Time of Day</b>	<b>Average Users Per Hour</b>	<b>Average Users Per Hour (Weekdays)</b>	<b>Average Users Per Hour (Weekends)</b>
12:00 a.m.	0.4	0.1	0.8
1:00 a.m.	0.4	0.6	0.0
2:00 a.m.	0.1	0.1	0.0
3:00 a.m.	0.0	0.0	0.0
4:00 a.m.	0.1	0.0	0.3
5:00 a.m.	1.5	2.0	0.5
6:00 a.m.	2.6	3.6	1.0
7:00 a.m.	4.2	3.3	5.8
8:00 a.m.	6.5	6.3	6.8
9:00 a.m.	6.7	4.3	11.0
10:00 a.m.	3.5	1.3	7.5
11:00 a.m.	7.5	5.9	10.5
12:00 p.m.	5.5	5.6	5.3
1:00 p.m.	4.4	3.7	5.5
2:00 p.m.	3.1	2.6	4.0
3:00 p.m.	3.2	2.7	4.0
4:00 p.m.	2.4	2.7	1.8
5:00 p.m.	4.8	6.4	2.0
6:00 p.m.	5.8	6.1	5.3
7:00 p.m.	7.5	5.9	10.5
8:00 p.m.	6.5	5.9	7.8
9:00 p.m.	2.3	2.3	2.3
10:00 p.m.	1.3	1.1	1.5
11:00 p.m.	0.5	0.7	0.3



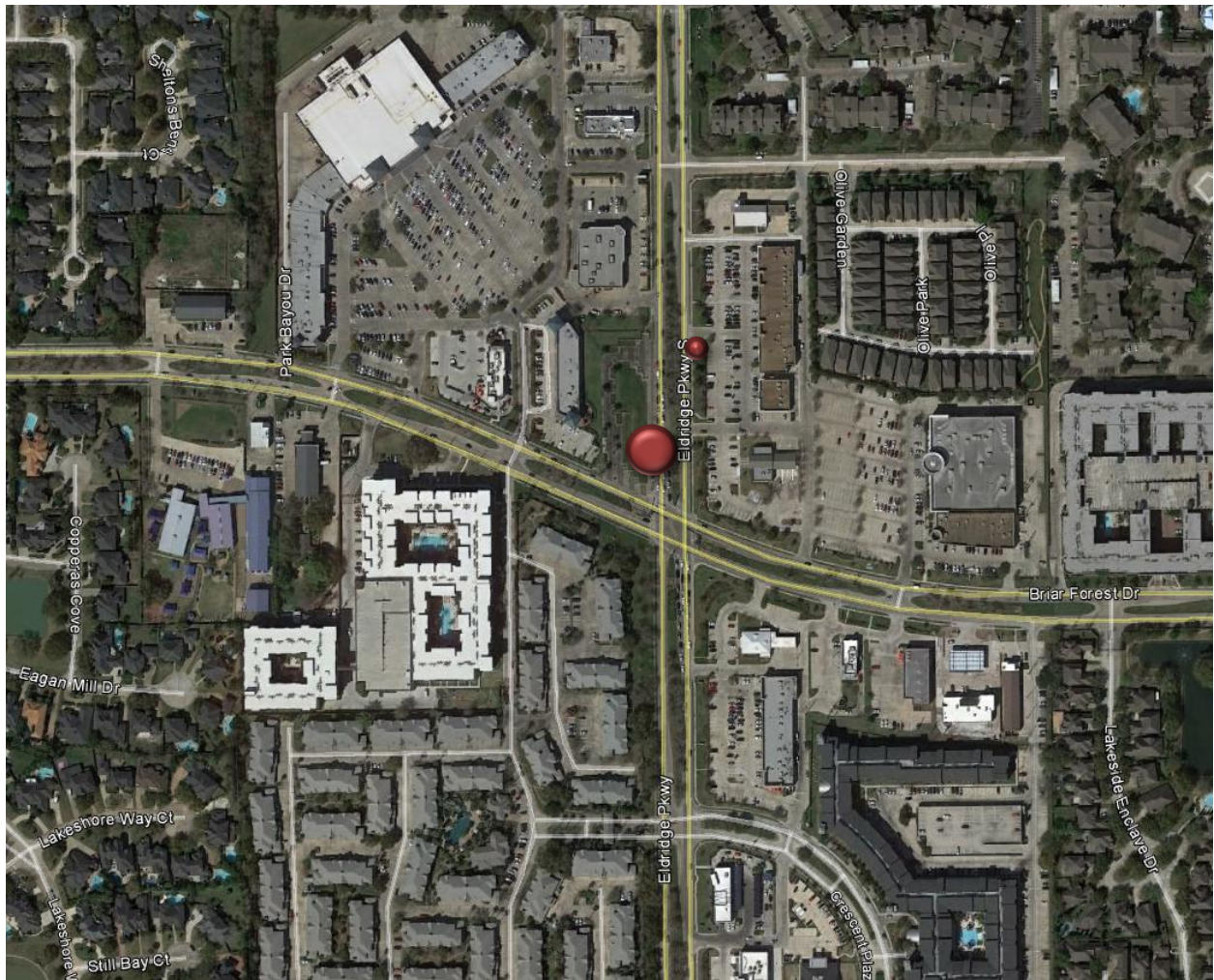
**Counter D**

Eldridge Parkway Southbound North of Briar Forest Drive

Location Information		
Location Name	Eldridge Parkway Southbound North of Briar Forest Drive	
Location Description	Sidewalk along Eldridge Parkway Southbound North of Briar Forest Drive	
Jurisdiction	Energy Corridor District/City of Houston	
Agency Deployed	Energy Corridor District	
GPS Coordinates	29°45'19.83"N, 95°37'31.61"W	
Surrounding Land Uses	North	Commercial/Retail, Multi-Family Residential
	South	Commercial/Retail, Multi-Family Residential
	East	Commercial/Retail, Single-Family Residential, Multi-Family Residential
	West	Open Space, Commercial/Retail, Multi-Family Residential
What object was device secured to?	Sign Post (Bicycle Crossing Ahead)	
Sidewalk Width	18'	
Buffer Width	None	
Street Width	Four-Lane Divided Roadway	
Parallel Parking	No	
Landscaping or Trees	Yes	
Sidewalk Pavement Type	Concrete + Brick Pavers	
ADA Ramps	Yes	
Sidewalk Condition	Good	
Speed Limit	35 miles per hour	
Street Lighting	Yes	
Street Traffic Volume	27,070 (1500 Eldridge Parkway: TxDOT 2012)	
Transit	Yes (METRO Bus Stop 125' South along Eldridge Parkway Southbound)	
Shade	No	
Have counts been collected by H-GAC at this location before?	No	

Trends
<ul style="list-style-type: none"> <li>Usage tends to be higher on weekdays (47 users/day) than during weekends (42 users/day).</li> <li>On weekdays, usage is highest in the late morning (10:00 a.m. – 11:00 a.m.). There was particularly high usage on Monday, June 6 during that period (25 users between 10:00 a.m. and 11:00 a.m.).</li> <li>During weekends, usage is highest in the mid-afternoon (2:00 p.m. – 3:00 p.m.).</li> </ul>

**Location Information: Map**



**Location Information: Photos**



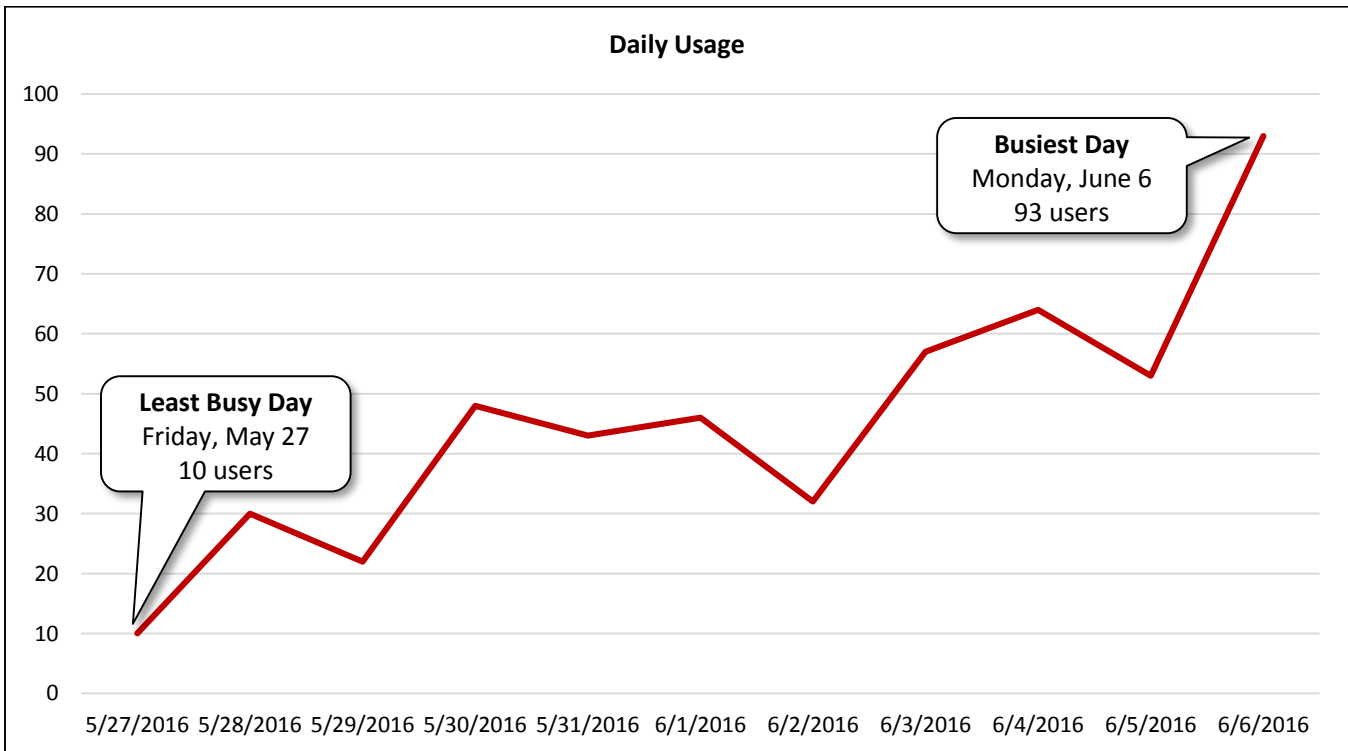
Image 21: Sidewalk along Eldridge Parkway Southbound North of Briar Forest Drive Facing North



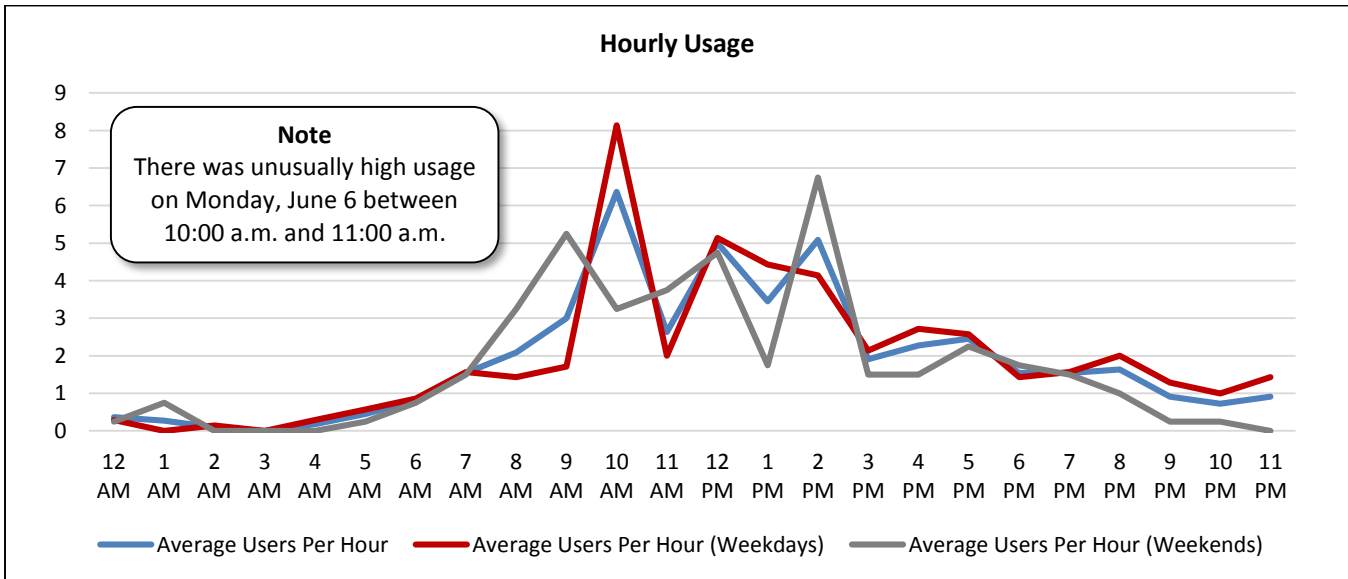
Image 22: Sidewalk along Eldridge Parkway Southbound North of Briar Forest Drive Facing South

<b>Daily Usage</b> Eldridge Parkway Southbound North of Briar Forest Drive				
Date	Users	Select Weather Data*		
		High Temperature (°F)	Low Temperature (°F)	Precipitation (inches)
Friday, May 27, 2016	10	84	66	1.13
Saturday, May 28, 2016	30	89	66	0
Sunday, May 29, 2016	22	88	71	0
Monday, May 30, 2016	48	86	71	0.01
Tuesday, May 31, 2016	43	88	70	0.02
Wednesday, June 1, 2016	46	87	73	0.06
Thursday, June 2, 2016	32	82	70	1.5
Friday, June 3, 2016	57	82	70	0.23
Saturday, June 4, 2016	64	82	70	0.48
Sunday, June 5, 2016	53	84	70	0.33
Monday, June 6, 2016	93	89	72	0
<b>Total</b>	498			
<b>Average Daily Usage</b>	45			
<b>Average Daily Usage (Weekday)</b>	47			
<b>Average Daily Usage (Weekend)</b>	42			
		<b>Notes</b>		
		Memorial Day: Monday, May 30, 2016		

\*Weather conditions recorded at KSGR.



Hourly Usage			
Eldridge Parkway Southbound North of Briar Forest Drive			
Time of Day	Average Users Per Hour	Average Users Per Hour (Weekdays)	Average Users Per Hour (Weekends)
12:00 a.m.	0.4	0.3	0.3
1:00 a.m.	0.3	0.0	0.8
2:00 a.m.	0.1	0.1	0.0
3:00 a.m.	0.0	0.0	0.0
4:00 a.m.	0.2	0.3	0.0
5:00 a.m.	0.5	0.6	0.3
6:00 a.m.	0.8	0.9	0.8
7:00 a.m.	1.5	1.6	1.5
8:00 a.m.	2.1	1.4	3.3
9:00 a.m.	3.0	1.7	5.3
10:00 a.m.	6.4	8.1	3.3
11:00 a.m.	2.6	2.0	3.8
12:00 p.m.	5.0	5.1	4.8
1:00 p.m.	3.5	4.4	1.8
2:00 p.m.	5.1	4.1	6.8
3:00 p.m.	1.9	2.1	1.5
4:00 p.m.	2.3	2.7	1.5
5:00 p.m.	2.5	2.6	2.3
6:00 p.m.	1.5	1.4	1.8
7:00 p.m.	1.5	1.6	1.5
8:00 p.m.	1.6	2.0	1.0
9:00 p.m.	0.9	1.3	0.3
10:00 p.m.	0.7	1.0	0.3
11:00 p.m.	0.9	1.4	0.0



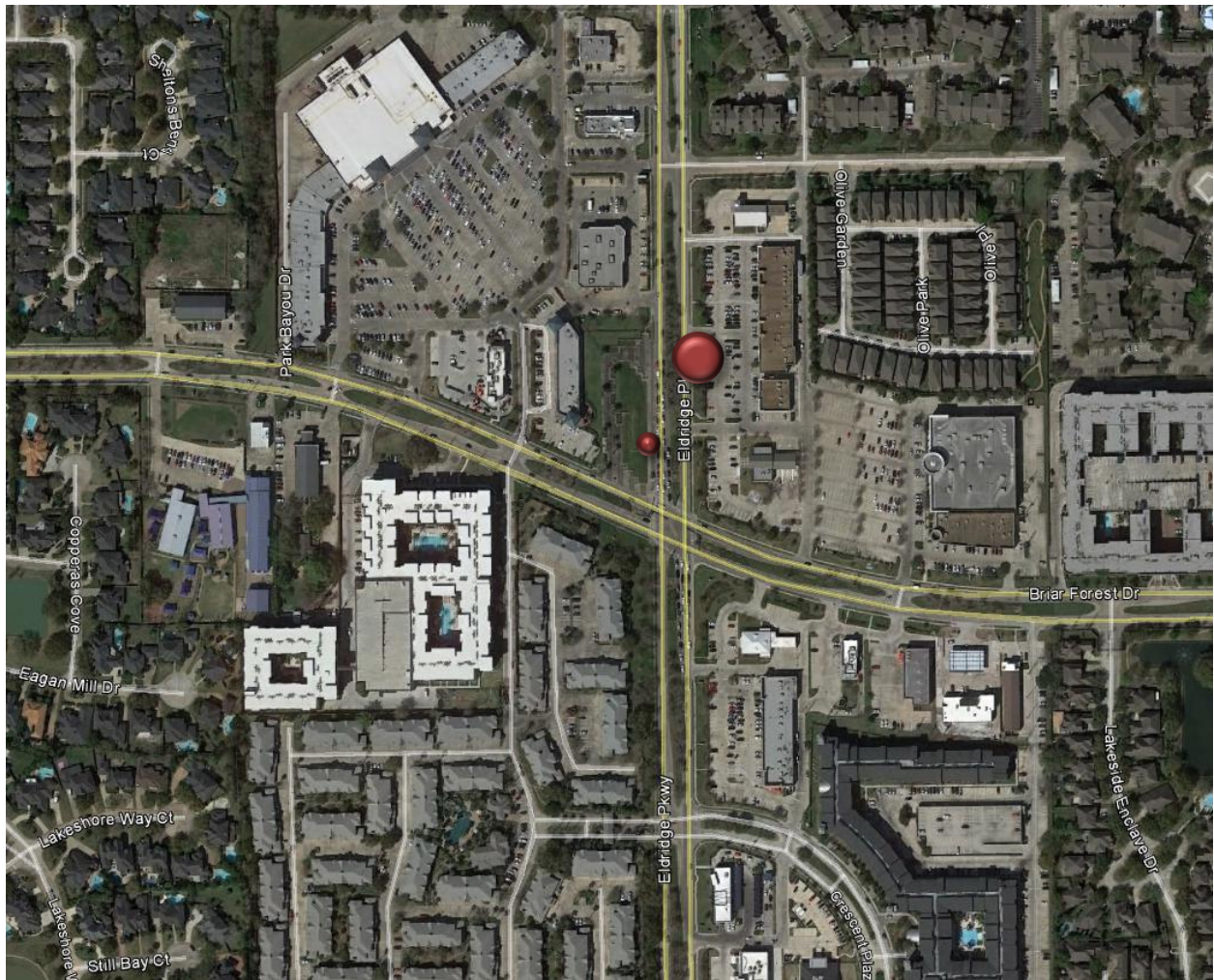
**Counter E**

Eldridge Parkway Northbound North of Briar Forest Drive

Location Information		
Location Name	Eldridge Parkway Northbound North of Briar Forest Drive	
Location Description	Sidewalk along Eldridge Parkway Northbound North of Briar Forest Drive	
Jurisdiction	Energy Corridor District/City of Houston	
Agency Deployed	Energy Corridor District	
GPS Coordinates	29°45'21.47"N, 95°37'30.61"W	
Surrounding Land Uses	North	Commercial/Retail, Multi-Family Residential
	South	Commercial/Retail, Multi-Family Residential
	East	Commercial/Retail, Single-Family Residential, Multi-Family Residential
	West	Open Space, Commercial/Retail, Multi-Family Residential
What object was device secured to?	Sign Post (Speed Limit)	
Sidewalk Width	4'	
Buffer Width	4'	
Street Width	Four-Lane Divided Roadway	
Parallel Parking	No	
Landscaping or Trees	Yes	
Sidewalk Pavement Type	Concrete	
ADA Ramps	Yes	
Sidewalk Condition	Good	
Speed Limit	35 miles per hour	
Street Lighting	Yes	
Street Traffic Volume	27,070 (1500 Eldridge Parkway: TxDOT 2012)	
Transit	Yes (METRO Bus Stop 200' South along Eldridge Parkway Northbound)	
Shade	No	
Have counts been collected by H-GAC at this location before?	No	

Trends
<ul style="list-style-type: none"> <li>Usage tends to be higher on weekdays (55 users/day) than during weekends (49 users/day).</li> <li>On weekdays, usage is highest in the morning (8:00 a.m. – 10:00 a.m.). There is also a pronounced increase in usage in the late evening (7:00 p.m. – 9:00 p.m.).</li> <li>During weekends, usage is highest in the late morning (11:00 a.m. – 12:00 p.m.).</li> </ul>

**Location Information: Map**



**Location Information: Photos**



Image 23: Sidewalk along Eldridge Parkway Northbound North of Briar Forest Drive Facing North



Image 24: Sidewalk along Eldridge Parkway Northbound North of Briar Forest Drive Facing South



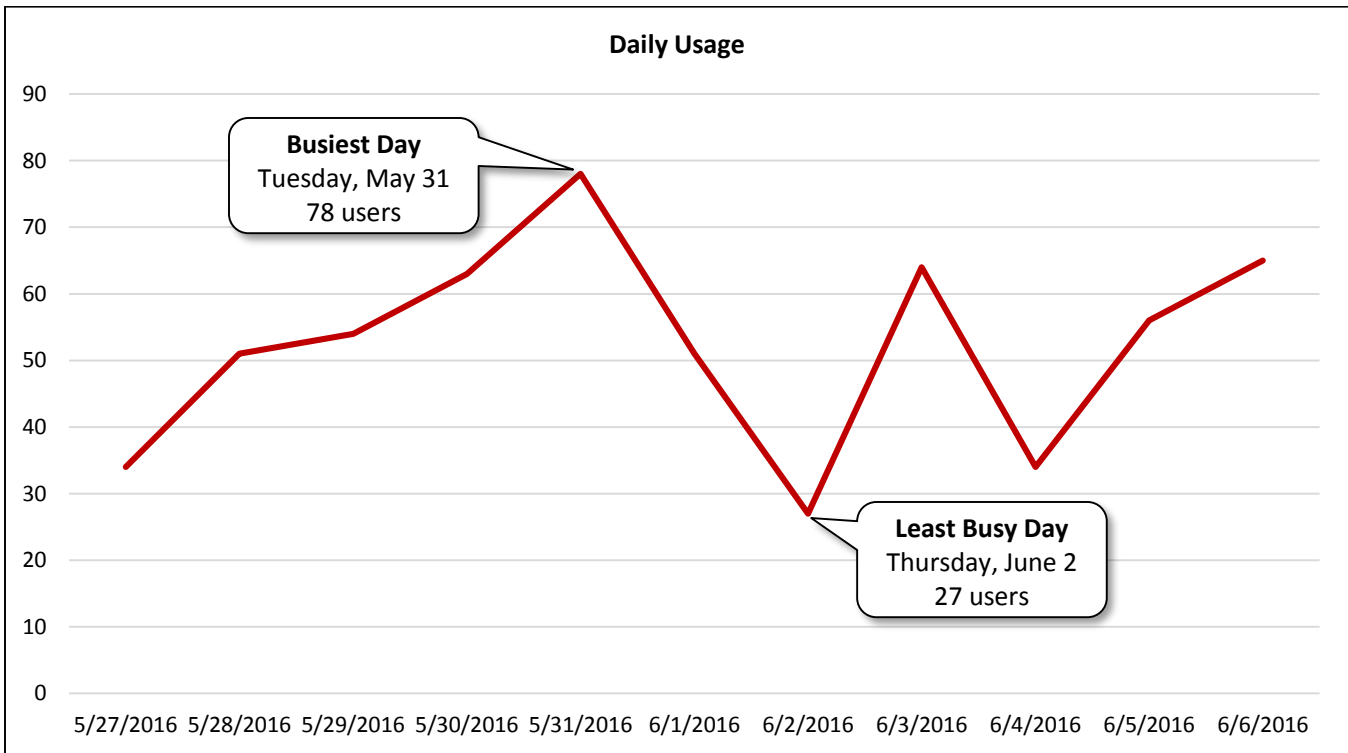
**Daily Usage**  
Eldridge Parkway Northbound North of Briar Forest Drive

Date	Users	Select Weather Data*		
		High Temperature (°F)	Low Temperature (°F)	Precipitation (inches)
Friday, May 27, 2016	34	84	66	1.13
Saturday, May 28, 2016	51	89	66	0
Sunday, May 29, 2016	54	88	71	0
Monday, May 30, 2016	63	86	71	0.01
Tuesday, May 31, 2016	78	88	70	0.02
Wednesday, June 1, 2016	51	87	73	0.06
Thursday, June 2, 2016	27	82	70	1.5
Friday, June 3, 2016	64	82	70	0.23
Saturday, June 4, 2016	34	82	70	0.48
Sunday, June 5, 2016	56	84	70	0.33
Monday, June 6, 2016	65	89	72	0

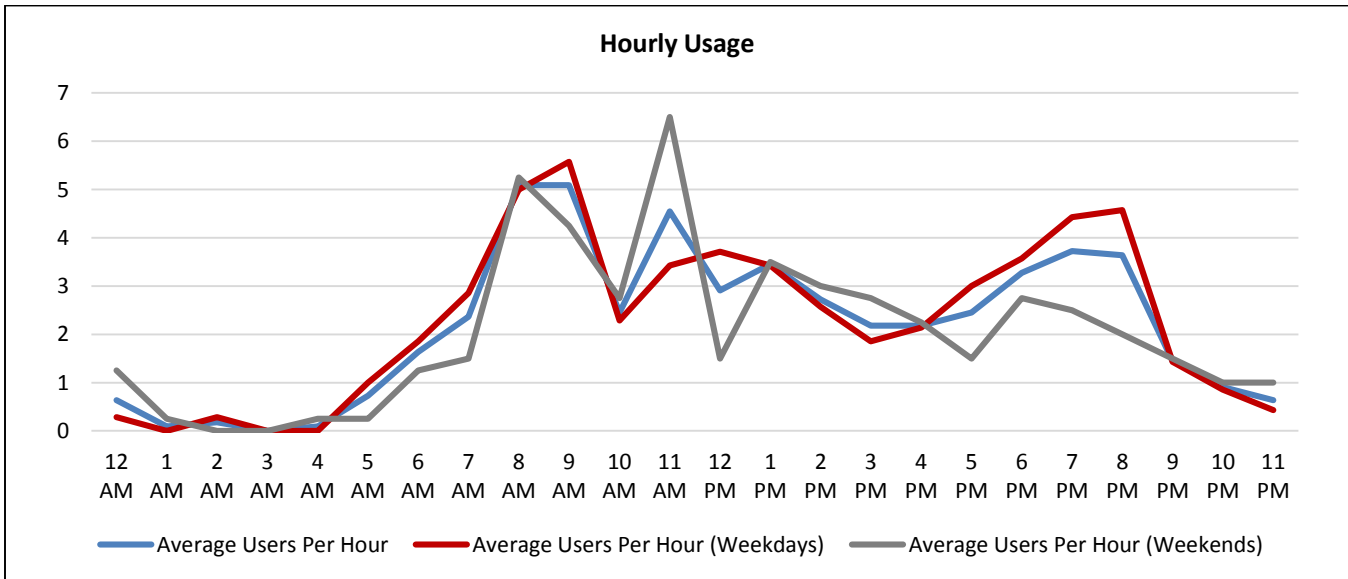
<b>Total</b>	577
<b>Average Daily Usage</b>	52
<b>Average Daily Usage (Weekday)</b>	55
<b>Average Daily Usage (Weekend)</b>	49

<b>Notes</b>
Memorial Day: Monday, May 30, 2016

\*Weather conditions recorded at KSGR.



<b>Hourly Usage</b> Eldridge Parkway Northbound North of Briar Forest Drive			
<b>Time of Day</b>	<b>Average Users Per Hour</b>	<b>Average Users Per Hour (Weekdays)</b>	<b>Average Users Per Hour (Weekends)</b>
12:00 a.m.	0.6	0.3	1.3
1:00 a.m.	0.1	0.0	0.3
2:00 a.m.	0.2	0.3	0.0
3:00 a.m.	0.0	0.0	0.0
4:00 a.m.	0.1	0.0	0.3
5:00 a.m.	0.7	1.0	0.3
6:00 a.m.	1.6	1.9	1.3
7:00 a.m.	2.4	2.9	1.5
8:00 a.m.	5.1	5.0	5.3
9:00 a.m.	5.1	5.6	4.3
10:00 a.m.	2.5	2.3	2.8
11:00 a.m.	4.5	3.4	6.5
12:00 p.m.	2.9	3.7	1.5
1:00 p.m.	3.5	3.4	3.5
2:00 p.m.	2.7	2.6	3.0
3:00 p.m.	2.2	1.9	2.8
4:00 p.m.	2.2	2.1	2.3
5:00 p.m.	2.5	3.0	1.5
6:00 p.m.	3.3	3.6	2.8
7:00 p.m.	3.7	4.4	2.5
8:00 p.m.	3.6	4.6	2.0
9:00 p.m.	1.5	1.4	1.5
10:00 p.m.	0.9	0.9	1.0
11:00 p.m.	0.6	0.4	1.0



## **Participants**

Energy Corridor District  
[www.energycorridor.org](http://www.energycorridor.org)

Houston-Galveston Area Council: Pedestrian-Bicyclist Planning  
[www.h-gac.com/go/pedbike](http://www.h-gac.com/go/pedbike)

Texas Transportation Institute  
<http://tti.tamu.edu/>