

HEMPSTEAD LIVABLE CENTERS STUDY – VALUES WORKSHOP



PARTNERS



Texas Department of Transportation
Providing safe, effective, and efficient movement of people and goods.



DESIGNWORKSHOP

UCC UrbanCore Collaborative

WALTER P MOORE

 CobbFendley



DESIGNWORKSHOP

AGENDA

- Project Background
- Purpose of Livable Centers Study
 - Approach and Process
 - Expectations
- Review Goals for Livable Centers Study
- Opportunity Analysis
- Schedule

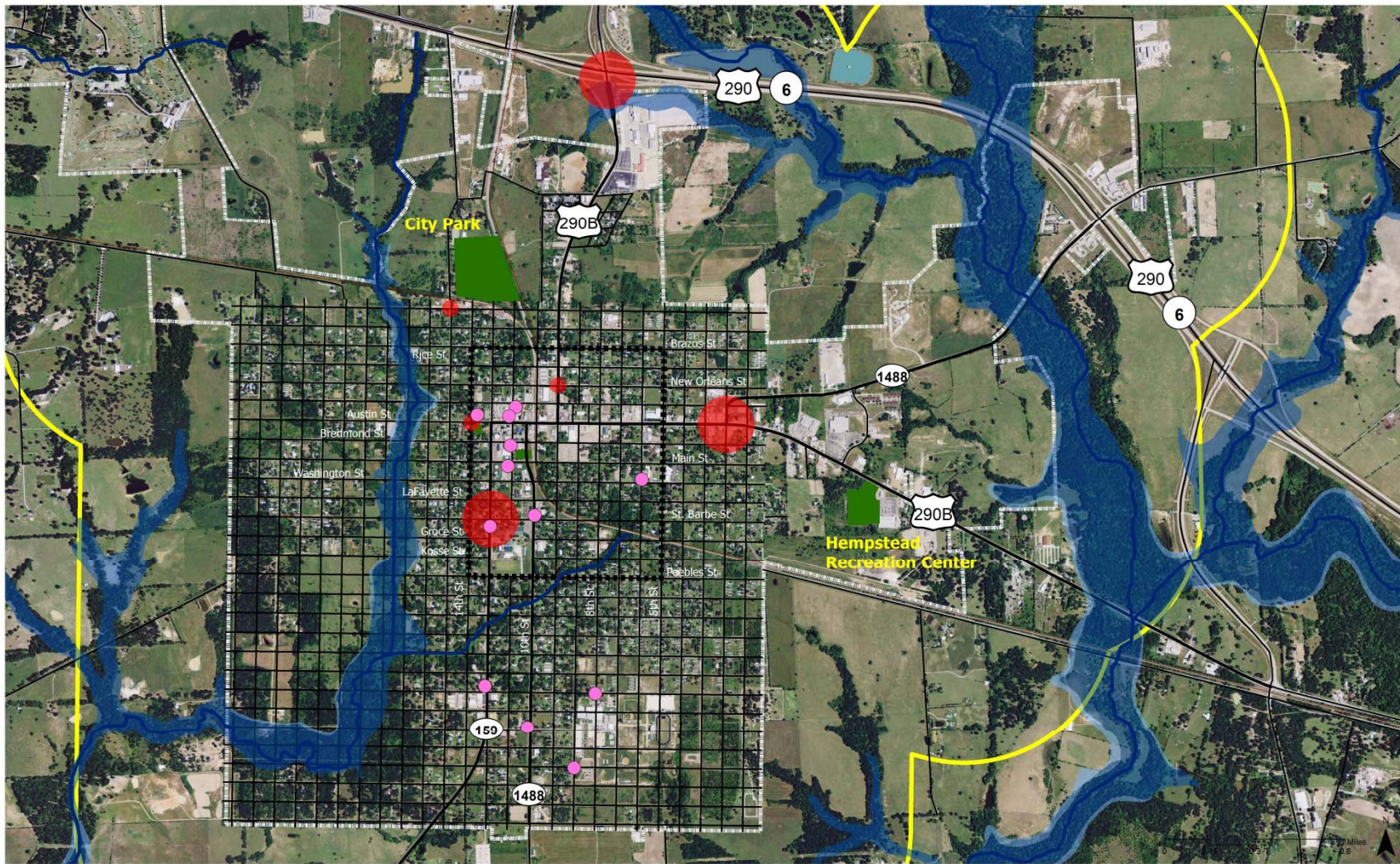


BACKGROUND

- H-GAC (Houston-Galveston Area Council): designated Metropolitan Planning Organization of the 8 county Houston-Galveston Transportation Management Area
 - Received funding for a Livable Centers Program
- What are livable centers?
 - walkable, mixed-use places that provide multimodal transportation options, improve environmental quality and promote economic development
- www.h-gac.com/livablecenters



STUDY AREA



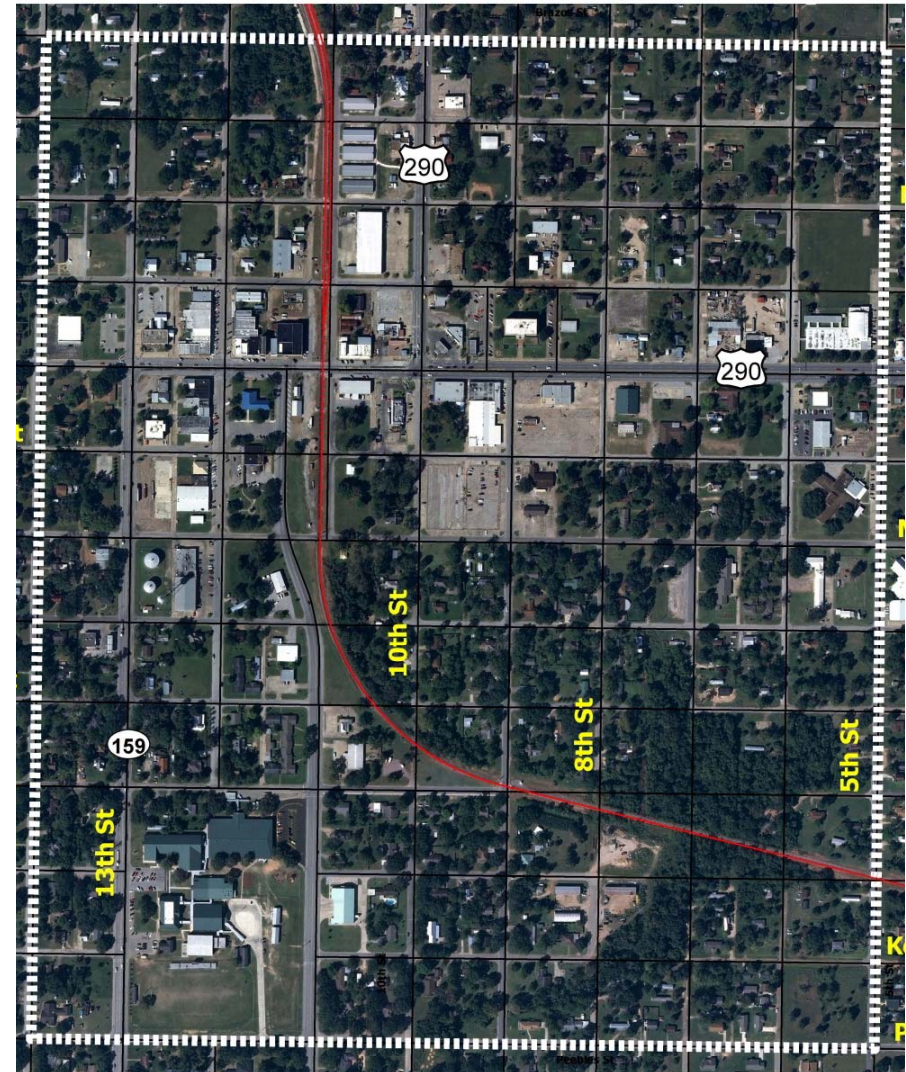
- Road
- Study Boundary
- Secondary Gateways
- Primary Gateways
- ETJ Boundary
- Floodzone
- Parks
- Community Facilities

Hempstead Vision Study Area

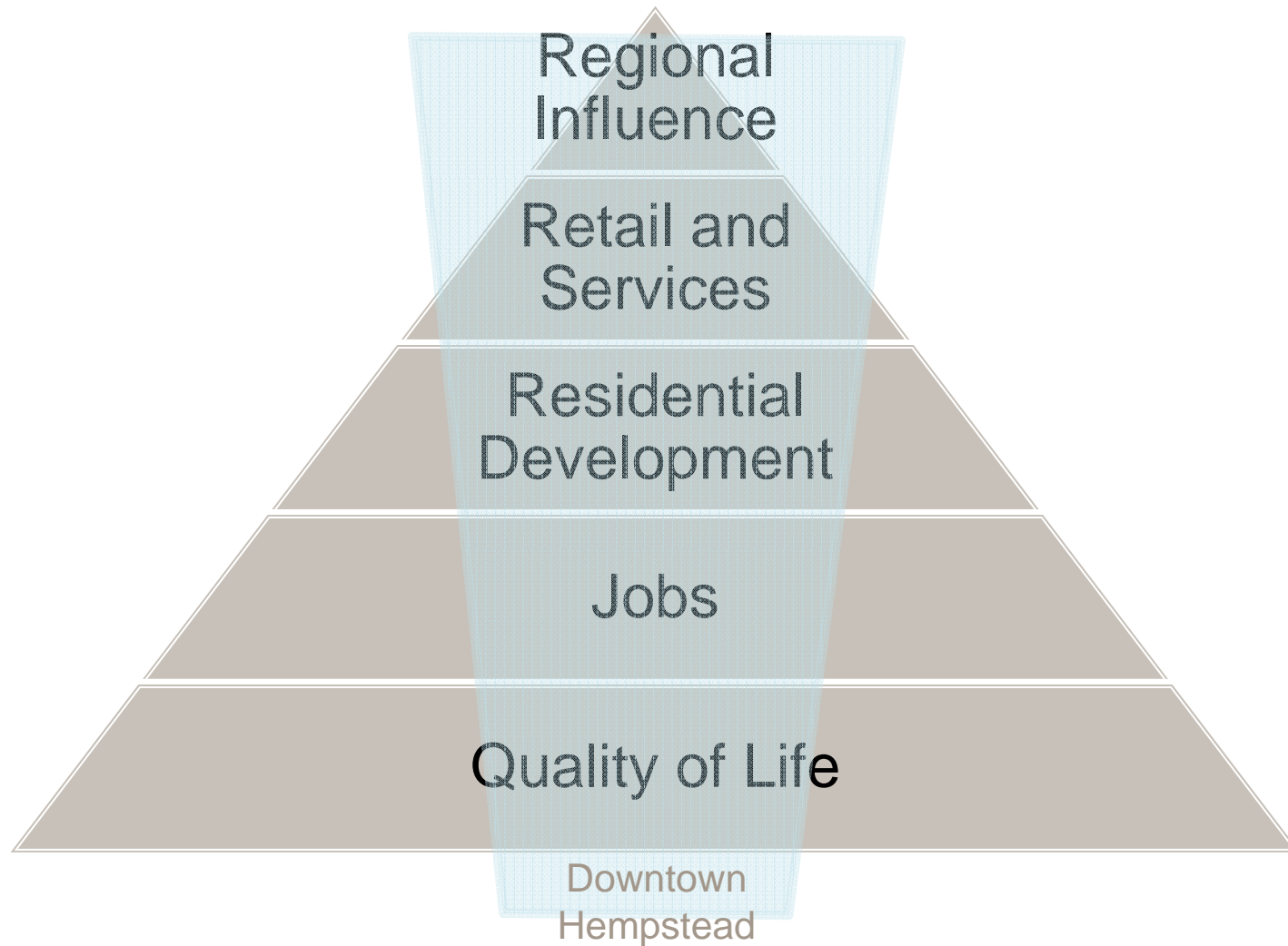


CRITICAL SUCCESS FACTORS

- Capitalize on quality of life in Hempstead.
- Reinforce the role of downtown in the economic development for the city.
- Plan should focus on implementation to attract private investment and leverage public improvements.
- “Complete streets” elements such as signage, sidewalks, and lighting improvements should be included in the plan.
- Consideration of Hempstead history and culture should inform the plan.



APPROACH



QUALITY OF LIFE

- Quality of life: refers to an individual or society's total well-being (emotional, social, and physical aspects of life)
- What would lead to an increased quality of life for citizens of Hempstead?
How can this plan increase quality of life?
 - Preserve parks and open space, increase accessibility/ activities
 - Continue efforts to improve school quality
 - Encourage walkability and increase access
 - Increase access to internet and community services
 - Improve infrastructure and public safety
 - Preserve historic buildings
 - Encourage tourism/festivals/
community gathering



GOALS

Goal 1: Encourage walkability and multimodal transit choices.

Goal 2: Encourage healthy living through safe public spaces.

Goal 5: Encourage a housing mix and affordability.

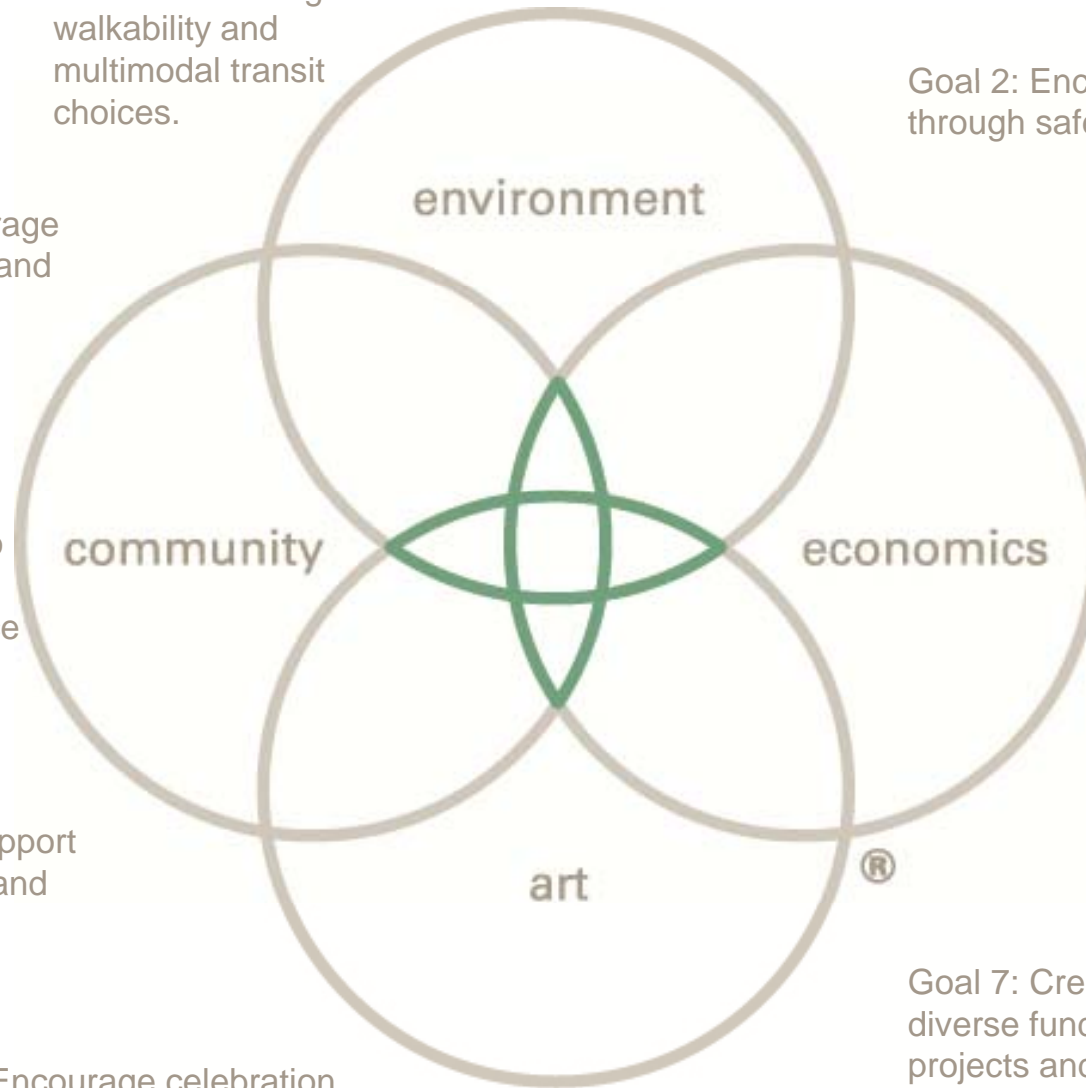
Goal 6: Identify role of downtown projects that complement economic development happening in key nodes in the City of Hempstead.

Goal 4: Establish community facilities to support the local neighborhoods' service needs.

Goal 8: Gain community support for the vision and projects.

Goal 3: Encourage celebration and highlight Hempstead through placemaking.

Goal 7: Create a balanced and diverse funding strategy for CIP projects and investments.



Which of these goals is most important to you. (Top three)

- 22% 1. Encourage walkability and multimodal transit choices.
- 30% 2. Encourage healthy living through safe public spaces.
- 30% 3. Encourage celebration and highlight Hempstead through placemaking.
- 19% 4. Establish community facilities to support the local neighborhoods service needs.
- 22% 5. Encourage a housing mix and affordability.
- 56% 6. Identify role of downtown projects that complement economic development happening in key nodes in the City of Hempstead.
- 33% 7. Create a balanced and diverse funding strategy for CIP projects and investments.
- 52% 8. Gain community support for the vision and projects.



CIRCULATION AND CONNECTIVITY



Transportation



CIRCULATION AND CONNECTIVITY OPPORTUNITIES



Improve sidewalk connections, especially the routes to schools.

\$

Create signed bike routes and paths.

\$

Improve walkability downtown and along major routes.

\$\$

Increase multi-modal opportunities around future transit stop.

\$

Improve access routes across the railroad tracks along major routes.

\$\$

Encourage safety by enhancing crosswalks with signage or traffic control measures.

\$\$

Connect Hempstead Park to downtown with better pedestrian, bicycle, and vehicular connections.

\$\$

Use shared driveways to reduce conflict points on major routes.

\$\$

Invest in wayfinding to route highway users to visit downtown Hempstead.

\$



- Potential future TIRZ (Tax Increment Reinvestment Zone)
- Livable Centers Implementation Grant Program
- City of Hempstead
- Texas Department of Transportation
- Private investors
- Community Development Block Grants
- Safe Routes to School

Choose the top three opportunities that you think are appropriate to address the Circulation and Connectivity goals.

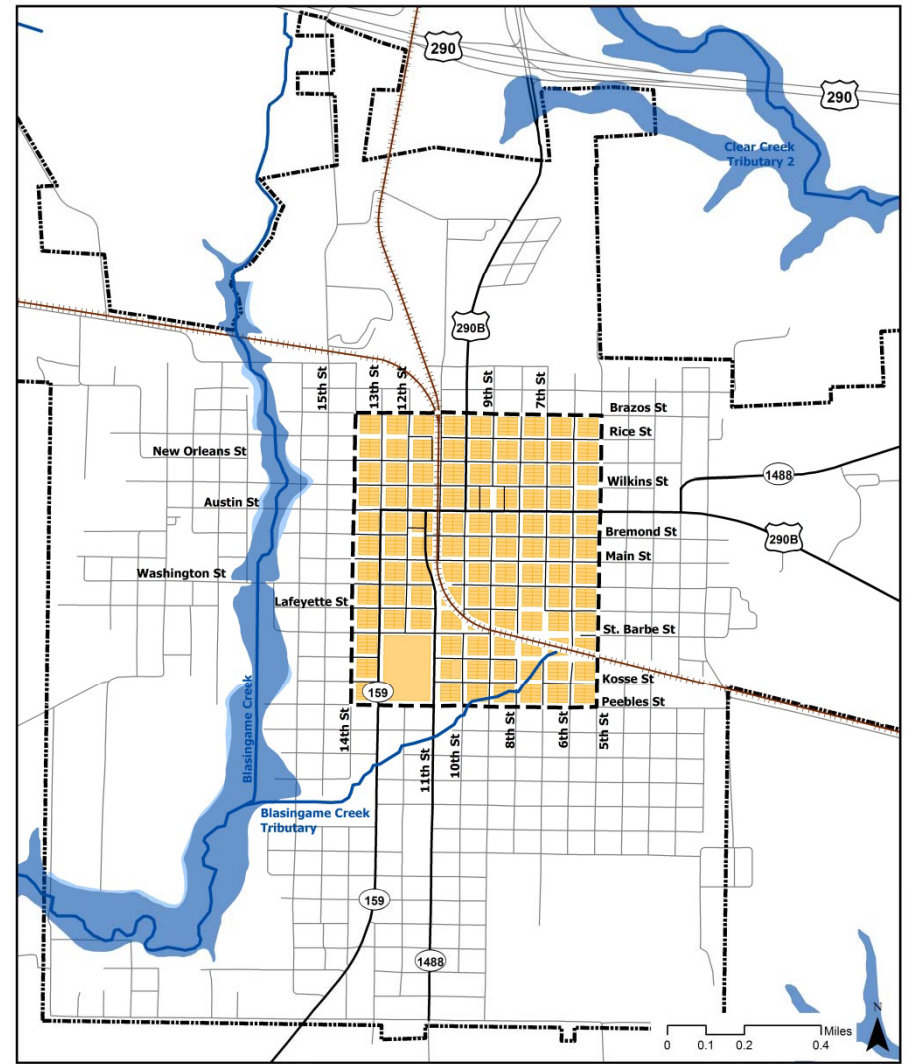
- 1. Improve sidewalk connections.
- 2. Create signed bike routes and paths.
- 3. Improve walkability downtown and along major routes.
- 4. Increase multi-modal opportunities around transit stop.
- 5. Improve access routes across the railroad tracks.
- 6. Encourage safety by enhancing crosswalks.
- 7. Connect Hempstead Park to downtown with better pedestrian, bike and vehicle connections.
- 8. Use shared driveways to reduce conflicts on major routes.
- 9. Invest in wayfinding to route highway users to visit downtown Hempstead.
- 10. I don't think any of these are appropriate.



PUBLIC SPACE AND ENVIRONMENT



Parks



Floodplain



PUBLIC SPACE AND ENVIRONMENT OPPORTUNITIES



- Encourage new parks in infill areas in downtown study area. \$\$
- Designate natural areas for use as nature parks and greenbelts. \$\$
- Improve amenities at existing parks. \$\$
- Improve lighting along major roads and/or at the watertower. \$
- Increase access to local, healthy food. \$



- City of Hempstead
- City of Hempstead EDC
- Private investors
- TIRZ
- Texas Community Development Block Grant Program
- H-GAC



Choose the top three opportunities that you think are appropriate for the Public Spaces and Environment opportunity.

52% 1. Encourage new parks in downtown.

60% 2. Designate natural areas as nature parks and greenbelts.

48% 3. Improve park amenities.

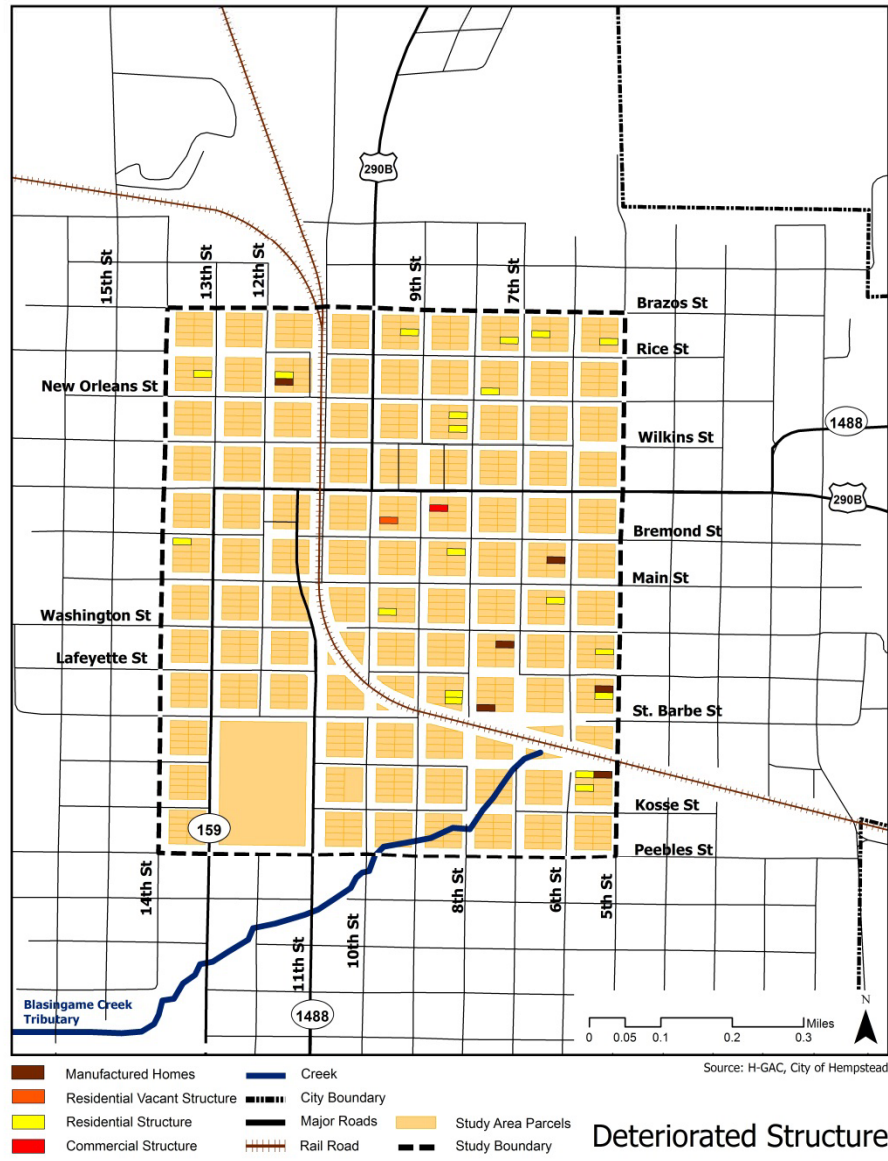
52% 4. Improve lighting.

40% 5. Increase access to local food.

4% 6. I don't think any of these are appropriate.



COMMUNITY DEVELOPMENT PATTERN



Deteriorated Structure



COMMUNITY DEVELOPMENT PATTERN OPPORTUNITIES



- Provide for housing affordability and a mix of housing types.
- Increase quality of housing stock.
- Establish community facilities to support local needs.
- Enforce current codes to ensure vacant properties contribute to the value of the neighborhood.
- Encourage green building standards.



\$
\$\$
\$\$\$
\$\$
\$



- Community Development Block Grant
- New Market Tax Credits
- Non-profit
- Churches
- Private investors
- Banks
- TIRZ
- Tax Abatements



Choose the top three opportunities that you think are appropriate for the Community Development opportunity.

37% 1. Provide affording housing availability.

48% 2. Increase quality of housing stock.

63% 3. Establish community facilities to support local need

63% 4. Enforce current codes.

30% 5. Encourage green building standards.

0% 6. I don't think any of these are appropriate.



PLACEMAKING AND BRANDING



- Develop gateway signage at key intersections. \$\$
- Develop a signage program and install wayfinding signage to local businesses and events. \$
- Create a marketing package to enhance reputation of Hempstead as a regional destination. \$
- Encourage local festivals and events. \$
- Promote local art (ex. Murals on buildings, Watermelon festival) \$

- City of Hempstead EDC
- TIRZ
- EDA Grants (Federal)
- Hempstead Chamber of Commerce



Choose the top three opportunities that you think are appropriate for the Placemaking and Branding opportunity.

69% 1. Encourage gateway signage.

35% 2. Develop a signage program.

69% 3. Create marketing package.

65% 4. Encourage local festivals and events.

31% 5. Promote local art.

4% 6. I don't think any of these are appropriate.



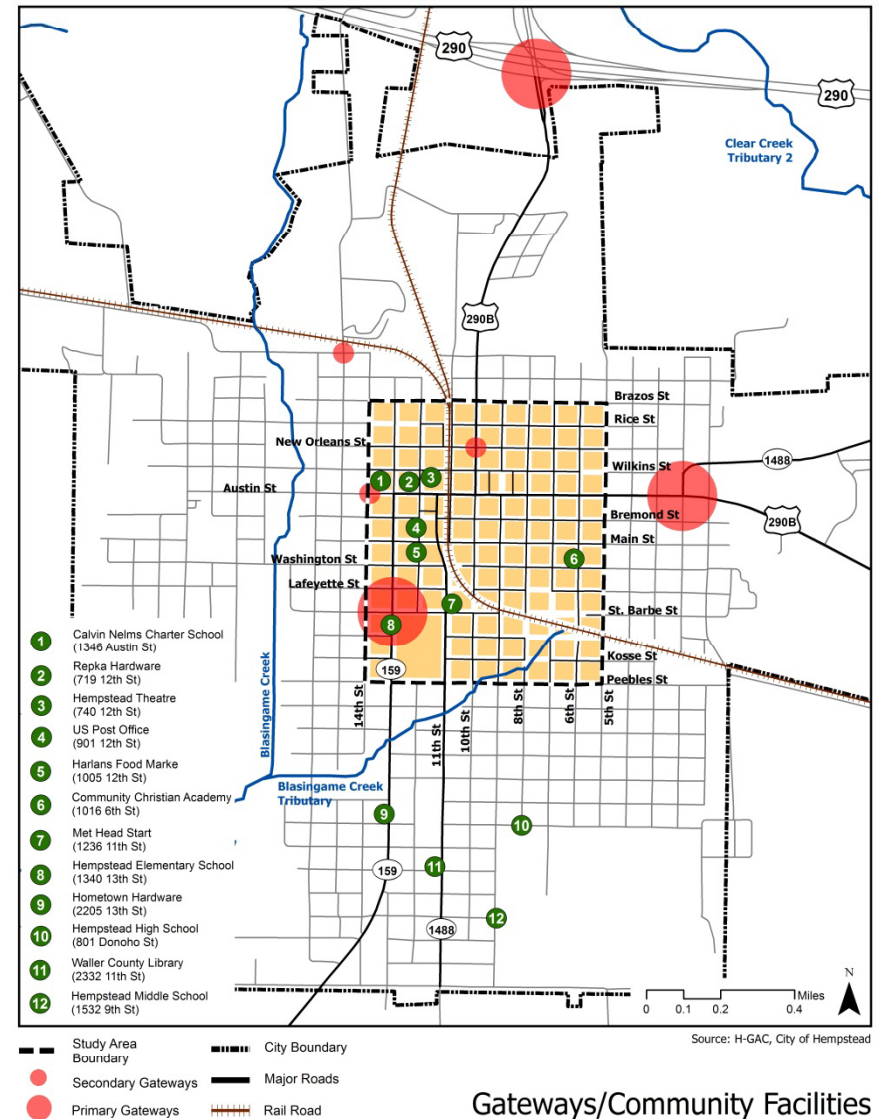
Do we have the gateway locations correct?

50%
1. Yes

0%
2. No

3. Maybe, but there are other
44% locations that should be
considered.

6%
4. I don't know.

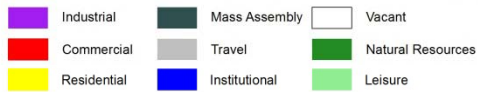
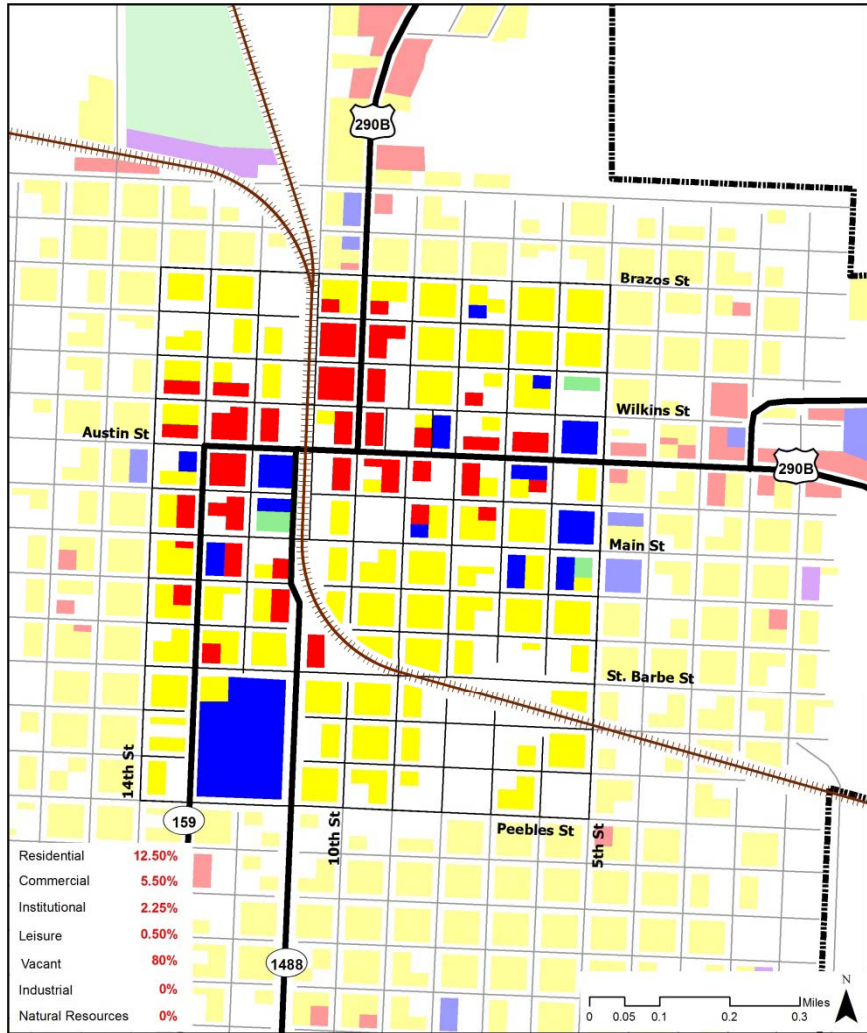


Gateways/Community Facilities

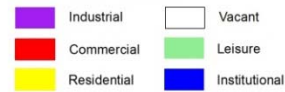
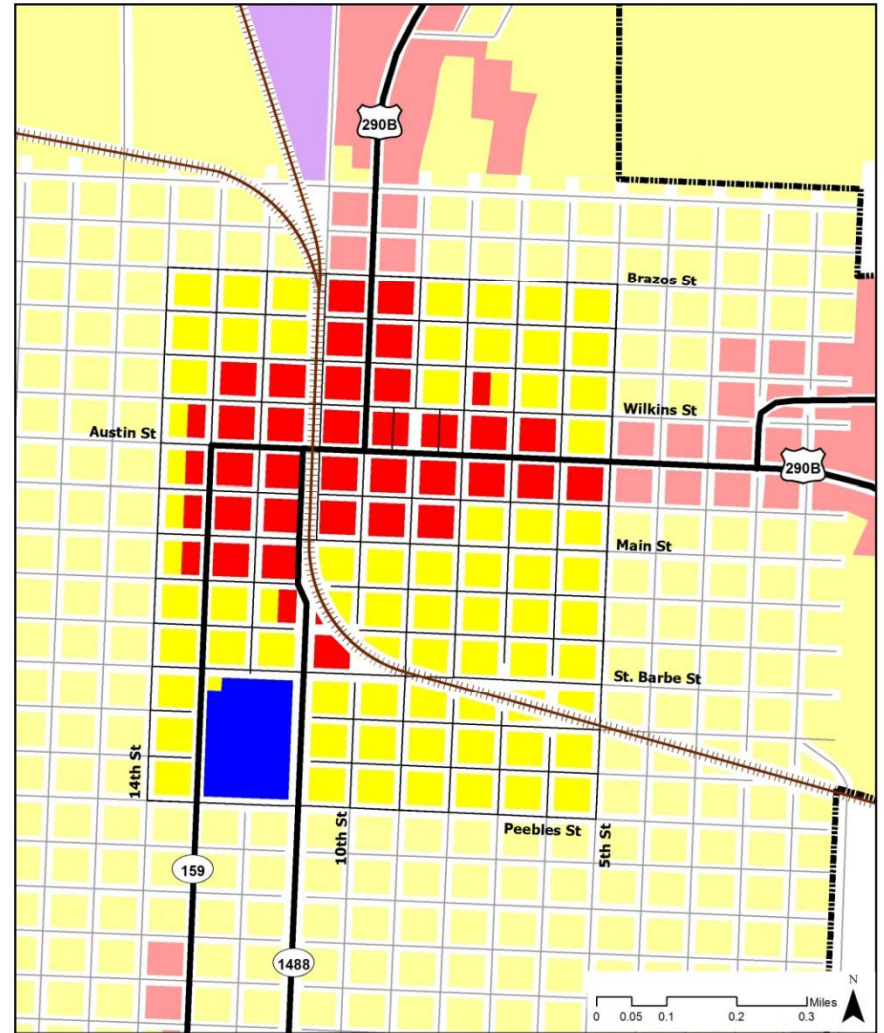
DESIGNWORKSHOP



ECONOMIC DEVELOPMENT



Existing Land Use



Future Land Use



ECONOMIC DEVELOPMENT OPPORTUNITIES



- Create a balanced, diverse funding strategy for CIP projects and investments specific to Hempstead.

\$

- Increase commercial and mixed uses around the future transit stop.

\$\$\$

- Reduce blighted or dilapidated buildings.

\$

- Attract local businesses by offering tax incentives and other means of support.

\$



- City of Hempstead
- Private investors
- City of Hempstead EDC
- TIRZ
- H-GAC
- TxDOT
- CDBG
- City/County Tax Abatements



Choose the top three opportunities that you think are appropriate for the Economic Development opportunity.

59% 1. Create a balanced, diverse funding strategy.

52% 2. Increase commercial and mixed uses around future transit stop.

81% 3. Clear unsightly and dilapidate buildings.

74% 4. Attract local businesses.

0% 5. I don't think any of these are appropriate.



NEXT STEPS

- Visioning Workshop
 - April 19
 - Presentation of vision
- Draft Livable Centers Plan
 - End of May
- Stakeholder meeting
 - Early June
- Final Plan
 - End of June

