

A wide-angle photograph of a prairie field. The foreground is filled with tall green grasses and numerous purple flower spikes. The middle ground is dominated by a dense field of pink flowers, likely prairie clover, stretching towards the horizon. The sky is overcast with grey clouds. In the far distance, a line of trees and utility poles is visible.

# Why Prairies Matter to You and the Region

**Coastal  
Prairie  
Conservancy**   
Formerly Katy Prairie Conservancy

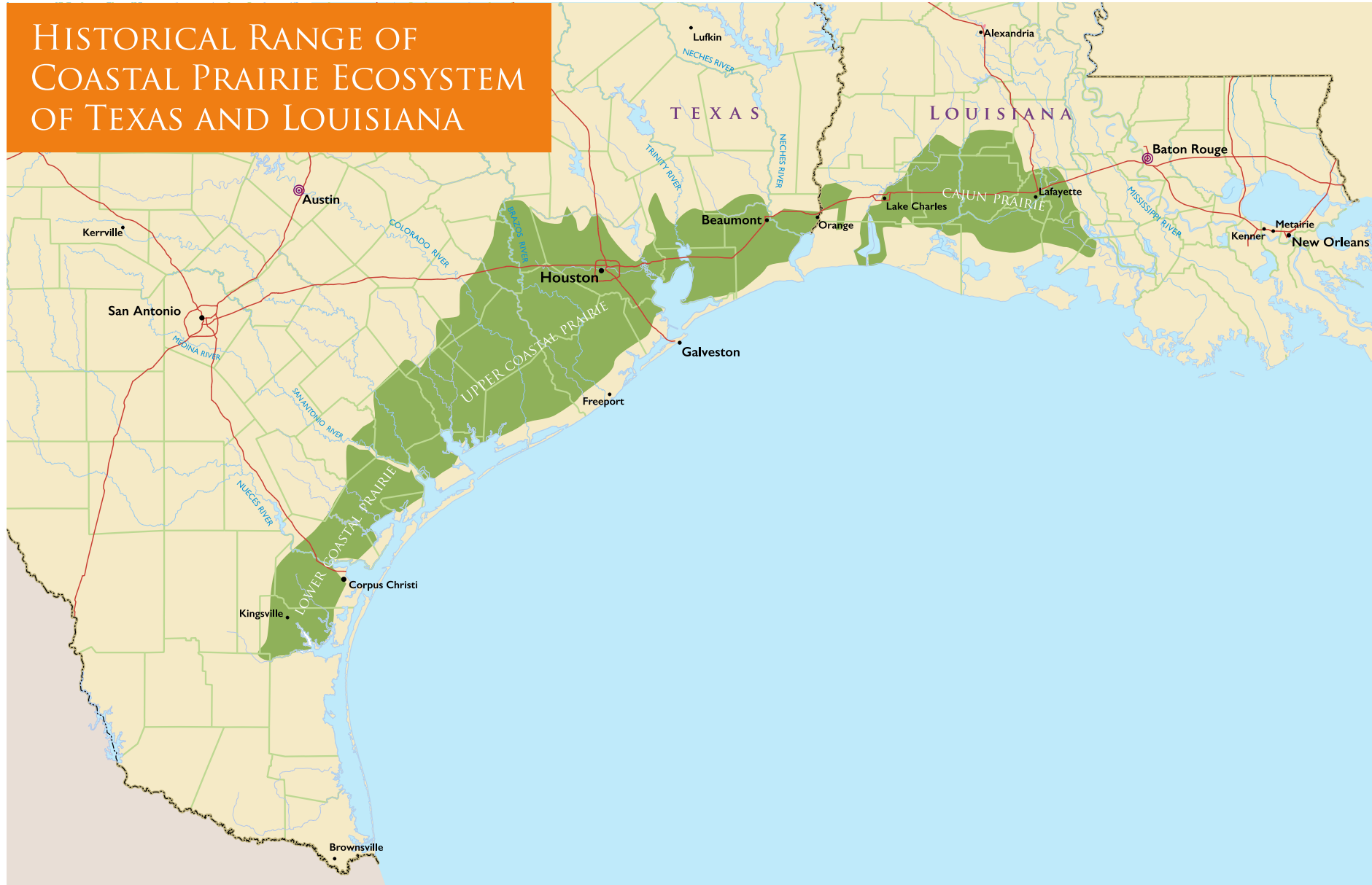


# WHAT IS A PRAIRIE?





# HISTORICAL RANGE OF COASTAL PRAIRIE ECOSYSTEM OF TEXAS AND LOUISIANA





# COASTAL PRAIRIE – PRAIRIE PLANTS





# WHY ARE PRAIRIES IMPORTANT?



**Coastal**   
**Prairie Conservancy**

[coastalprairieconservancy.org](http://coastalprairieconservancy.org)





# BIODIVERSITY





# STORM PROTECTION





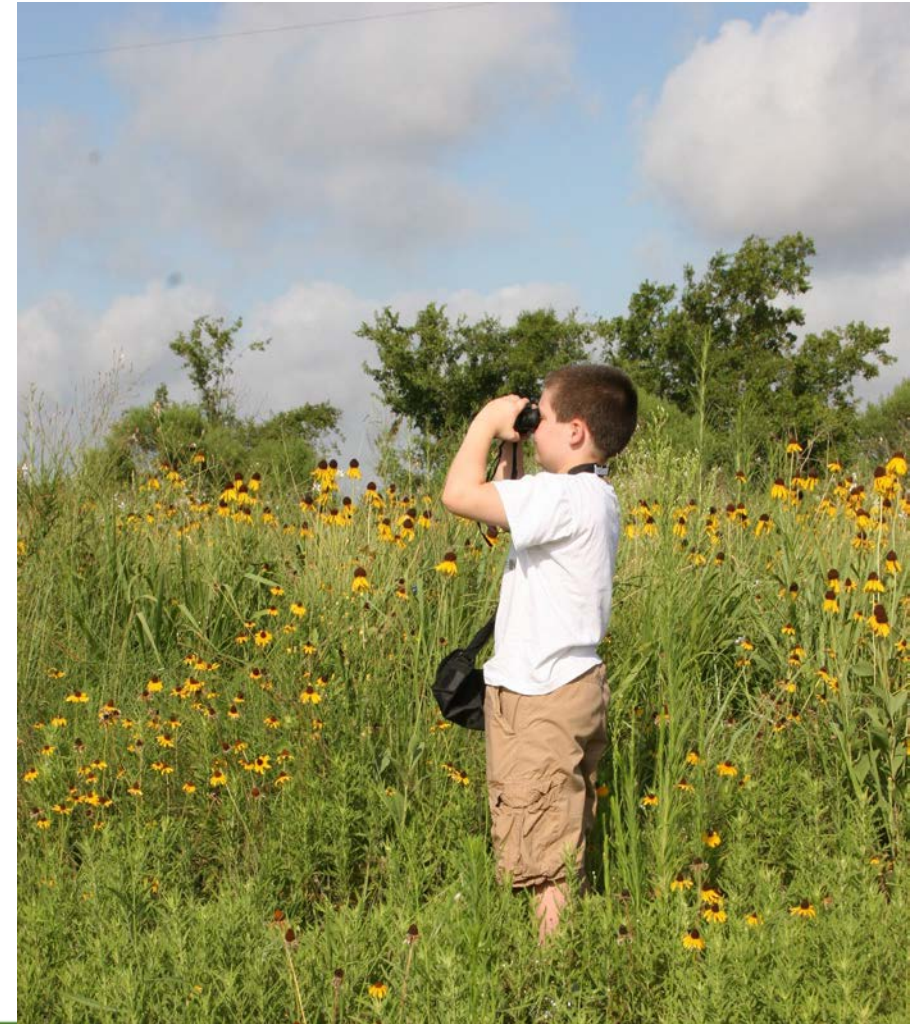


# WATER QUALITY





# RECREATION AND TOURISM







# AGRICULTURE







# CULTURAL HERITAGE



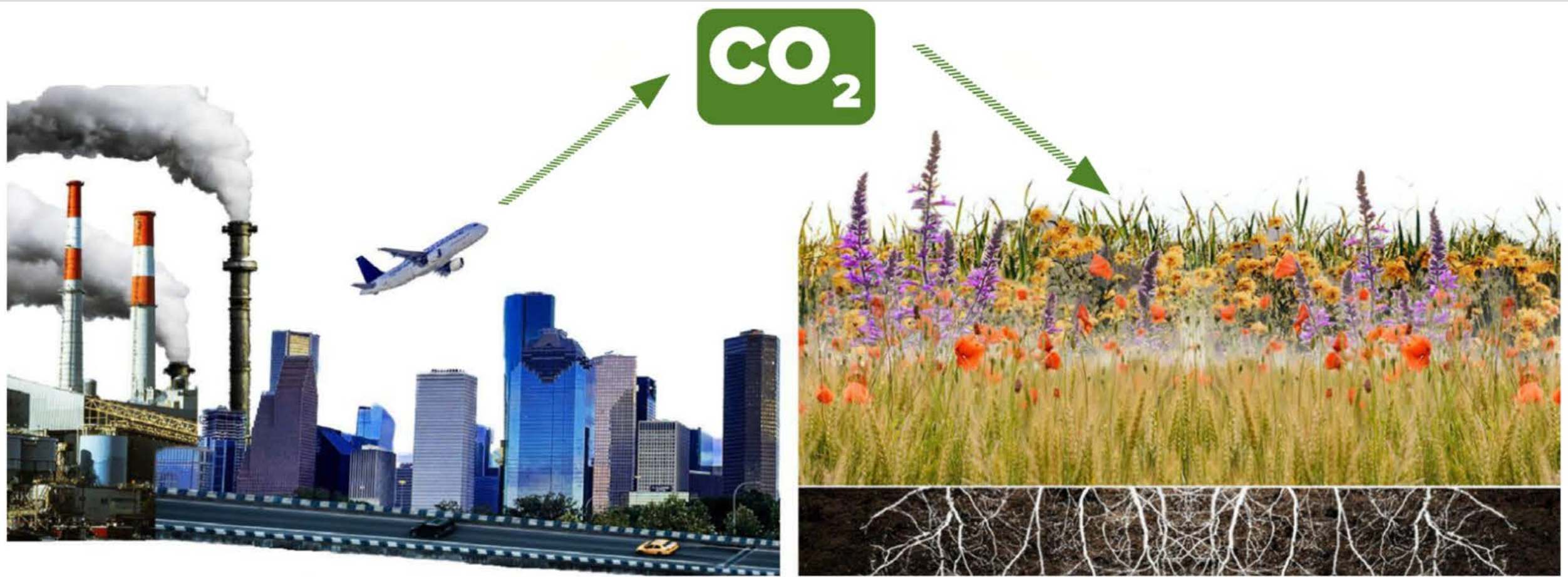


# SCIENTIFIC RESEARCH





# CARBON SEQUESTRATION





# EDUCATIONAL OPPORTUNITIES





# AESTHETIC VALUE





# FUNDING OPPORTUNITIES

## Conserving Prairies – land protection

- NRCS Grassland of Special Significance
- NAWCA (plus associated wetlands)
- NFWF
- RESTORE
- Private Philanthropy (Fdns/Corps)

## Restoring Prairies – land stewardship

- NAWCA (plus associated wetlands)
- TPWD – Landowner Incentive Prog.
- FWS – Partners for Wildlife





# EXAMPLES OF NEARBY PRAIRIES

- Williams Prairie -Fulshear
- Flo Hannah Prairie - Angleton
- Nash Prairie - Brazoria
- Deer Park Prairie – Pasadena
- Precinct I
- TMC Prairie – Holcombe Blvd.
- Hermann Park’s Whistlestop Prairie





# THANK YOU PHOTOGRAPHERS



Chuck Duplant, Michael  
Morton, Carolyn  
Fannon, Frank Farese,  
Alisa Kline, Don Pine



Mary Anne Piacentini

President and CEO

maryanne@coastalprairieconservancy.org

---



@coastalprairieconservancy



@coastalprairieconservancy



(713) 523-6135



www.coastalprairieconservancy.org

Coastal  
Prairie   
Conservancy