

County	Household Population (Thousands)										
	1980	1990	2000	2010	2020	2025	2030	2035	2040	2045	2050
Brazoria	162	183	231	303	372	421	462	501	571	676	770
Chambers	18	20	26	35	48	64	73	79	80	87	101
Fort Bend	127	221	348	579	823	952	1,033	1,144	1,237	1,343	1,453
Galveston	193	215	246	287	351	375	397	427	437	462	503
Harris	2,389	2,789	3,358	4,048	4,734	4,936	5,225	5,486	5,766	5,971	6,166
Liberty	47	52	65	70	90	116	143	181	184	204	213
Montgomery	128	181	292	453	621	763	894	1,021	1,148	1,246	1,339
Waller	17	20	29	40	57	73	103	120	147	165	178
Region	3,082	3,681	4,596	5,814	7,096	7,700	8,329	8,961	9,571	10,154	10,723

County	Household Population Change (Thousands)								
	1980-1990	1990-2000	2000-2010	2010-2020	2020-2030	2030-2040	2040-2050	1990-2020	2020-2050
Brazoria	21	48	72	70	90	109	199	189	398
Chambers	2	6	9	13	25	7	20	28	53
Fort Bend	94	127	231	244	210	205	216	602	630
Galveston	22	31	41	64	46	41	65	136	152
Harris	400	569	689	686	490	541	400	1,945	1,432
Liberty	5	13	5	20	53	41	30	39	123
Montgomery	53	111	160	168	274	253	192	440	719
Waller	4	9	10	17	46	45	31	36	122
Region	599	915	1,219	1,282	1,233	1,241	1,152	3,416	3,626

County	Household Population Growth Rate (%)								
	1980-1990	1990-2000	2000-2010	2010-2020	2020-2030	2030-2040	2040-2050	1990-2020	2020-2050
Brazoria	13%	26%	31%	23%	24%	24%	35%	104%	107%
Chambers	8%	29%	35%	37%	52%	10%	25%	139%	110%
Fort Bend	74%	57%	66%	42%	25%	20%	17%	272%	76%
Galveston	11%	15%	17%	22%	13%	10%	15%	63%	43%
Harris	17%	20%	21%	17%	10%	10%	7%	70%	30%
Liberty	11%	26%	8%	28%	58%	28%	16%	75%	136%
Montgomery	41%	62%	55%	37%	44%	28%	17%	244%	116%
Waller	22%	44%	34%	43%	81%	44%	21%	177%	215%
Region	19%	25%	27%	22%	17%	15%	12%	93%	51%



Sources
1980, 1990, 2000, 2010 and 2020: U.S. Decennial Census of Population
2021 to 2050 H-GAC Forecast (2024)

County	Jobs (Thousands)										
	1980	1990	2000	2010	2020	2025	2030	2035	2040	2045	2050
Brazoria	68	71	80	92	117	123	131	134	143	194	241
Chambers	7	6	8	10	25	33	33	34	35	35	35
Fort Bend	38	51	94	142	238	265	288	306	324	363	406
Galveston	73	80	93	101	159	166	168	170	170	171	174
Harris	1,381	1,538	1,944	2,107	2,520	2,793	2,957	3,125	3,303	3,469	3,639
Liberty	14	14	17	18	21	24	30	43	48	50	52
Montgomery	26	43	83	139	219	237	273	298	313	325	338
Waller	6	8	11	15	21	25	38	43	44	46	47
Region	1,613	1,811	2,329	2,624	3,321	3,667	3,918	4,153	4,380	4,653	4,932

County	Jobs Change (Thousands)								
	1980-1990	1990-2000	2000-2010	2010-2020	2020-2030	2030-2040	2040-2050	1990-2020	2020-2050
Brazoria	3	9	12	25	15	12	98	46	125
Chambers	(1)	2	3	15	8	1	0	19	10
Fort Bend	13	44	48	96	50	36	82	187	168
Galveston	7	13	8	58	9	2	4	79	15
Harris	157	405	163	413	437	346	336	982	1,119
Liberty	0	2	1	3	9	19	3	7	31
Montgomery	17	40	56	80	54	40	26	176	119
Waller	2	3	4	6	16	6	3	14	26
Region	198	518	295	697	598	461	553	1,509	1,612

County	Jobs Growth Rate (%)								
	1980-1990	1990-2000	2000-2010	2010-2020	2020-2030	2030-2040	2040-2050	1990-2020	2020-2050
Brazoria	5%	13%	15%	27%	13%	9%	68%	65%	107%
Chambers	-19%	25%	36%	144%	34%	3%	1%	314%	39%
Fort Bend	35%	86%	51%	68%	21%	12%	25%	370%	71%
Galveston	10%	16%	8%	58%	6%	1%	2%	98%	9%
Harris	11%	26%	8%	20%	17%	12%	10%	64%	44%
Liberty	4%	17%	5%	20%	40%	64%	7%	47%	145%
Montgomery	64%	92%	68%	58%	24%	14%	8%	407%	54%
Waller	29%	40%	40%	43%	77%	16%	7%	180%	121%
Region	12%	29%	13%	27%	18%	12%	13%	83%	49%

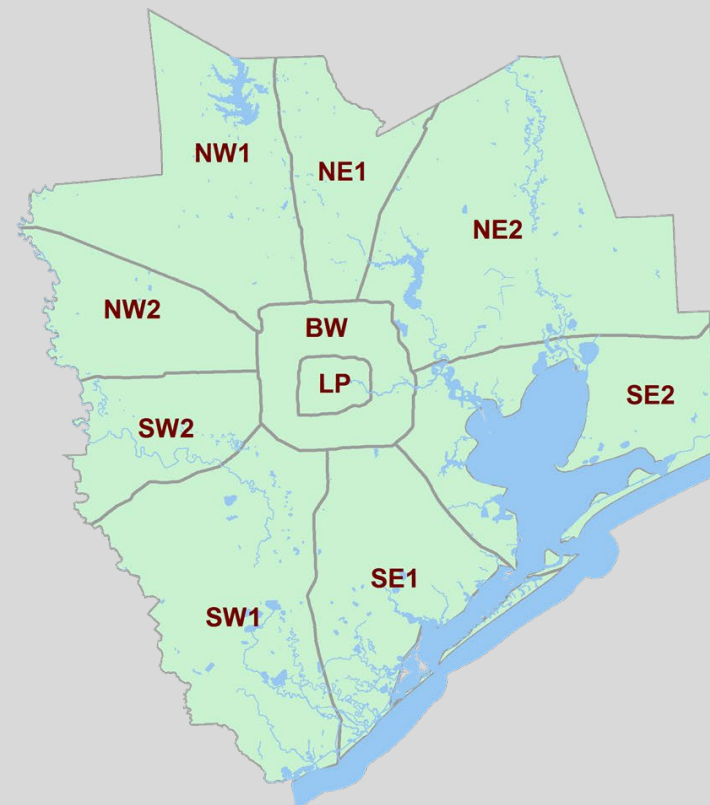


Sources
 1980, 1990, 2000, 2010 and 2020: U.S. Census
 2021 to 2050 H-GAC Forecast (2024)

Section	Household Population (Thousands)										
	1980	1990	2000	2010	2020	2025	2030	2035	2040	2045	2050
BW	1,246	1,271	1,482	1,587	1,706	1,740	1,797	1,859	1,975	2,091	2,185
LP	481	412	433	441	520	602	667	699	742	750	751
NE1	111	157	197	328	435	481	525	595	667	717	761
NE2	158	213	271	366	485	534	585	654	676	719	753
NW1	196	353	549	820	1,059	1,155	1,282	1,389	1,496	1,561	1,634
NW2	51	135	205	373	512	612	748	845	906	950	982
SE1	207	252	312	394	465	502	528	571	606	690	787
SE2	299	346	399	444	513	508	513	525	540	553	579
SW1	163	202	270	378	496	569	632	703	800	932	1,049
SW2	207	340	477	683	903	997	1,050	1,121	1,160	1,190	1,241
Region	3,119	3,681	4,596	5,814	7,095	7,698	8,328	8,959	9,569	10,153	10,721

Section	Household Population Change (Thousands)									
	1980-1990	1990-2000	2000-2010	2010-2020	2020-2030	2030-2040	2040-2050	1990-2020	2020-2050	
	BW	26	210	105	119	91	178	210	434	479
LP	(69)	21	8	79	147	75	9	108	231	
NE1	45	40	131	108	89	143	93	279	326	
NE2	55	59	95	119	100	91	76	273	268	
NW1	157	196	271	239	223	214	138	706	575	
NW2	84	69	168	139	237	157	76	376	470	
SE1	45	60	82	71	62	79	180	214	322	
SE2	47	54	44	70	(0)	27	40	168	66	
SW1	39	68	108	118	136	167	249	294	552	
SW2	133	137	206	220	147	110	81	563	338	
Region	562	915	1,219	1,281	1,233	1,241	1,152	3,415	3,626	

Section	Household Population Growth Rate (%)									
	1980-1990	1990-2000	2000-2010	2010-2020	2020-2030	2030-2040	2040-2050	1990-2020	2020-2050	
	BW	2%	17%	7%	7%	5%	10%	11%	34%	28%
LP	-14%	5%	2%	18%	28%	11%	1%	26%	44%	
NE1	41%	26%	66%	33%	21%	27%	14%	178%	75%	
NE2	35%	28%	35%	33%	21%	16%	11%	128%	55%	
NW1	80%	55%	49%	29%	21%	17%	9%	200%	54%	
NW2	163%	51%	82%	37%	46%	21%	8%	278%	92%	
SE1	22%	24%	26%	18%	13%	15%	30%	85%	69%	
SE2	16%	16%	11%	16%	0%	5%	7%	49%	13%	
SW1	24%	34%	40%	31%	27%	26%	31%	146%	111%	
SW2	65%	40%	43%	32%	16%	10%	7%	166%	37%	
Region	18%	25%	27%	22%	17%	15%	12%	93%	51%	

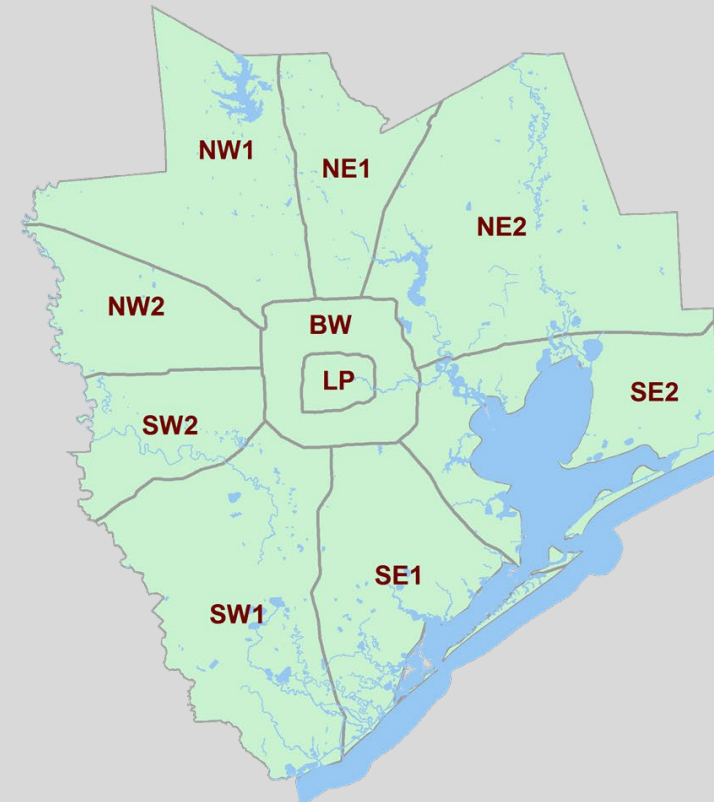


Sources
 1980, 1990, 2000, 2010 and 2020: U.S. Decennial Census of Population
 2021 to 2050 H-GAC Forecast (2024)

Section	Jobs (Thousands)										
	1980	1990	2000	2010	2020	2025	2030	2035	2040	2045	2050
BW	n/a	583	692	696	864	944	994	1,061	1,174	1,235	1,317
LP	n/a	529	572	622	617	694	740	773	782	789	795
NE1	n/a	78	119	137	162	179	194	208	221	227	234
NE2	n/a	56	73	72	125	139	160	186	195	199	203
NW1	n/a	93	191	278	391	441	475	502	514	533	554
NW2	n/a	38	85	112	199	233	281	308	329	394	448
SE1	n/a	64	85	82	135	143	149	152	156	190	224
SE2	n/a	193	220	221	341	362	364	369	371	373	375
SW1	n/a	53	83	103	156	176	191	199	222	260	306
SW2	n/a	124	165	197	331	355	371	393	415	453	477
Region	1,613	1,811	2,284	2,519	3,320	3,667	3,918	4,153	4,380	4,653	4,932

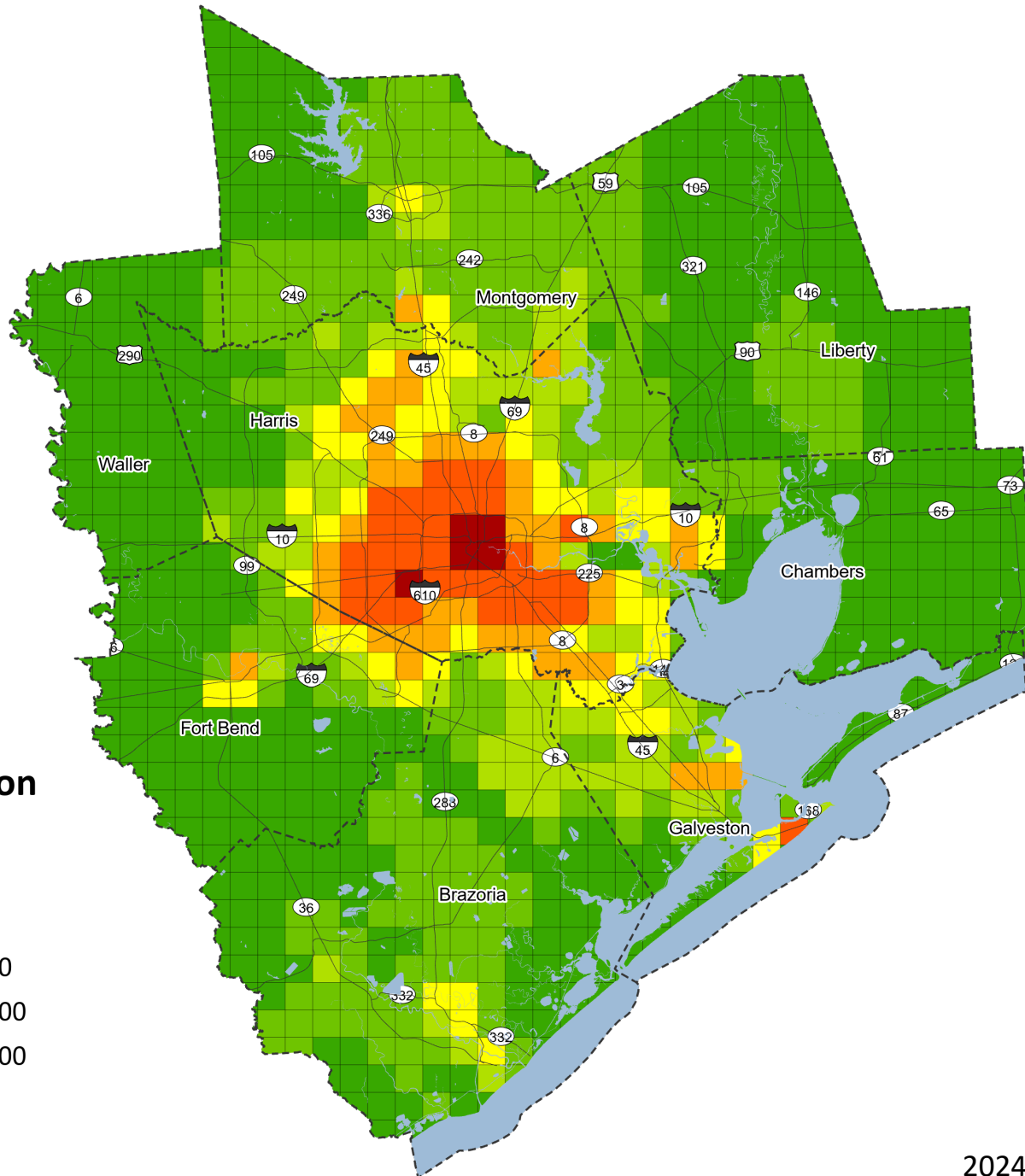
Section	Jobs Change (Thousands)								
	1980-1990	1990-2000	2000-2010	2010-2020	2020-2030	2030-2040	2040-2050	1990-2020	2020-2050
BW	n/a	108	4	168	130	180	143	280	453
LP	n/a	43	50	(5)	123	43	13	87	178
NE1	n/a	40	18	25	32	27	13	84	71
NE2	n/a	17	(1)	53	36	35	7	69	78
NW1	n/a	98	87	113	84	39	40	298	163
NW2	n/a	48	26	87	82	49	119	161	249
SE1	n/a	21	(3)	53	14	7	68	70	89
SE2	n/a	26	1	120	23	7	4	148	34
SW1	n/a	30	20	53	36	30	84	103	150
SW2	n/a	41	33	134	39	44	62	207	146
Region	198	473	235	802	598	461	553	1,509	1,612

Section	Jobs Growth Rate (%)								
	1980-1990	1990-2000	2000-2010	2010-2020	2020-2030	2030-2040	2040-2050	1990-2020	2020-2050
BW	n/a	19%	1%	24%	15%	18%	12%	48%	52%
LP	n/a	8%	9%	-1%	20%	6%	2%	17%	29%
NE1	n/a	52%	15%	18%	19%	14%	6%	107%	44%
NE2	n/a	31%	-2%	74%	29%	22%	4%	125%	62%
NW1	n/a	105%	45%	41%	21%	8%	8%	319%	42%
NW2	n/a	127%	31%	78%	41%	17%	36%	429%	125%
SE1	n/a	32%	-4%	65%	11%	5%	44%	110%	66%
SE2	n/a	14%	1%	55%	7%	2%	1%	77%	10%
SW1	n/a	57%	24%	52%	23%	16%	38%	195%	96%
SW2	n/a	33%	20%	68%	12%	12%	15%	168%	44%
Region	12%	26%	10%	32%	18%	12%	13%	83%	49%



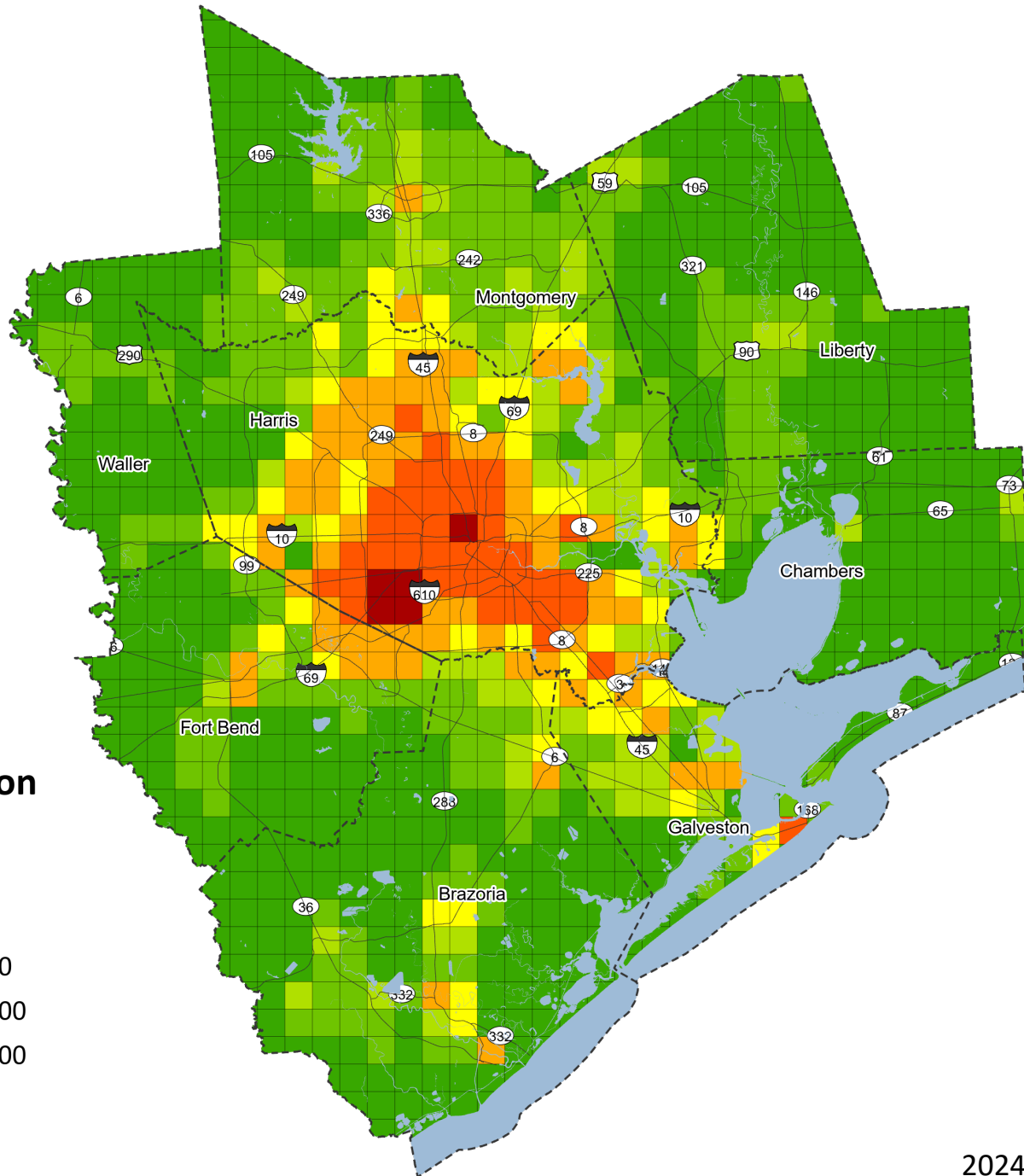
Sources
1980, 1990, 2000, 2010 and 2020: U.S. Census
2021 to 2050 H-GAC Forecast (2024)

1980 Population



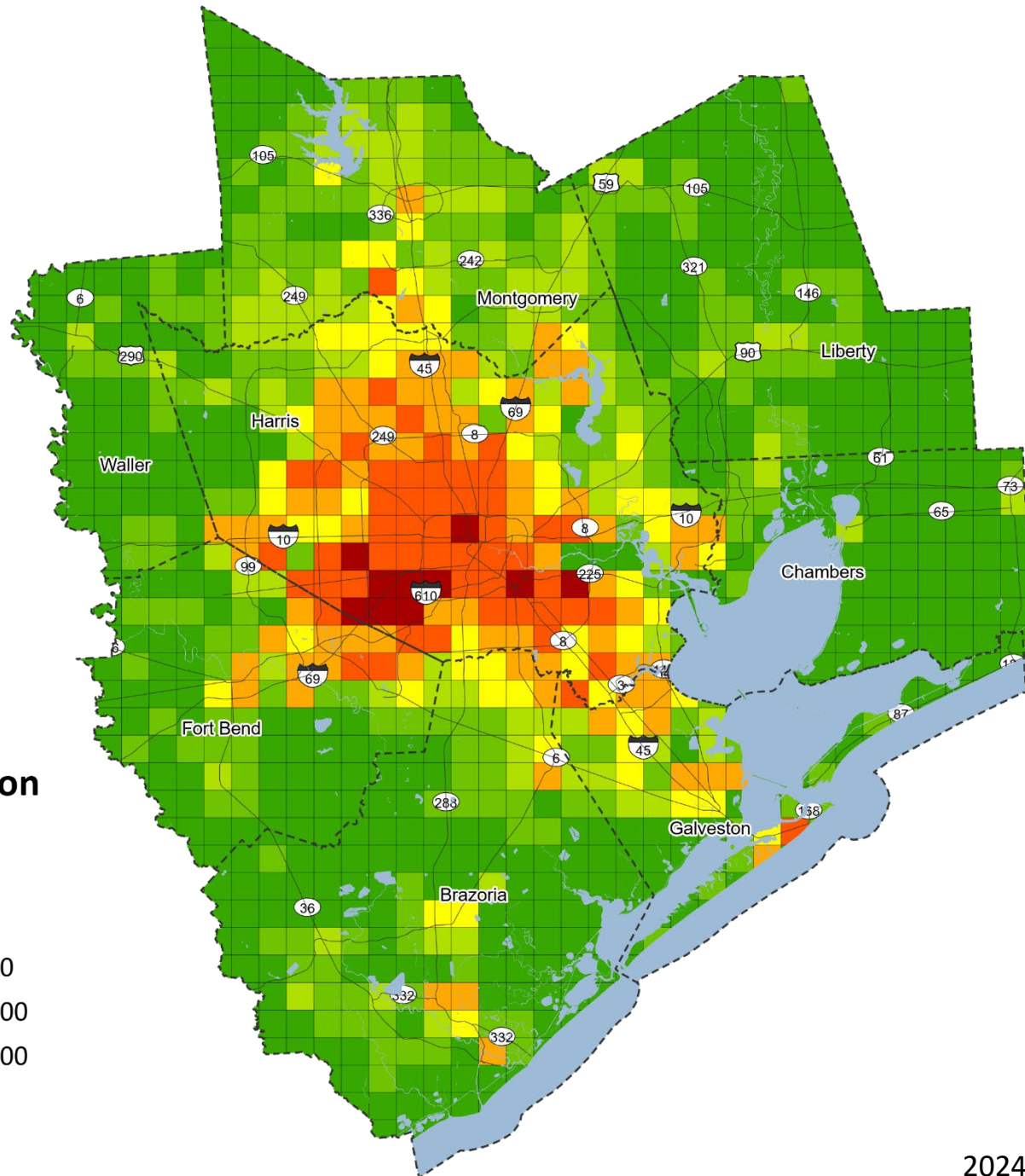
2024 (3x3 mile grid)

1990 Population



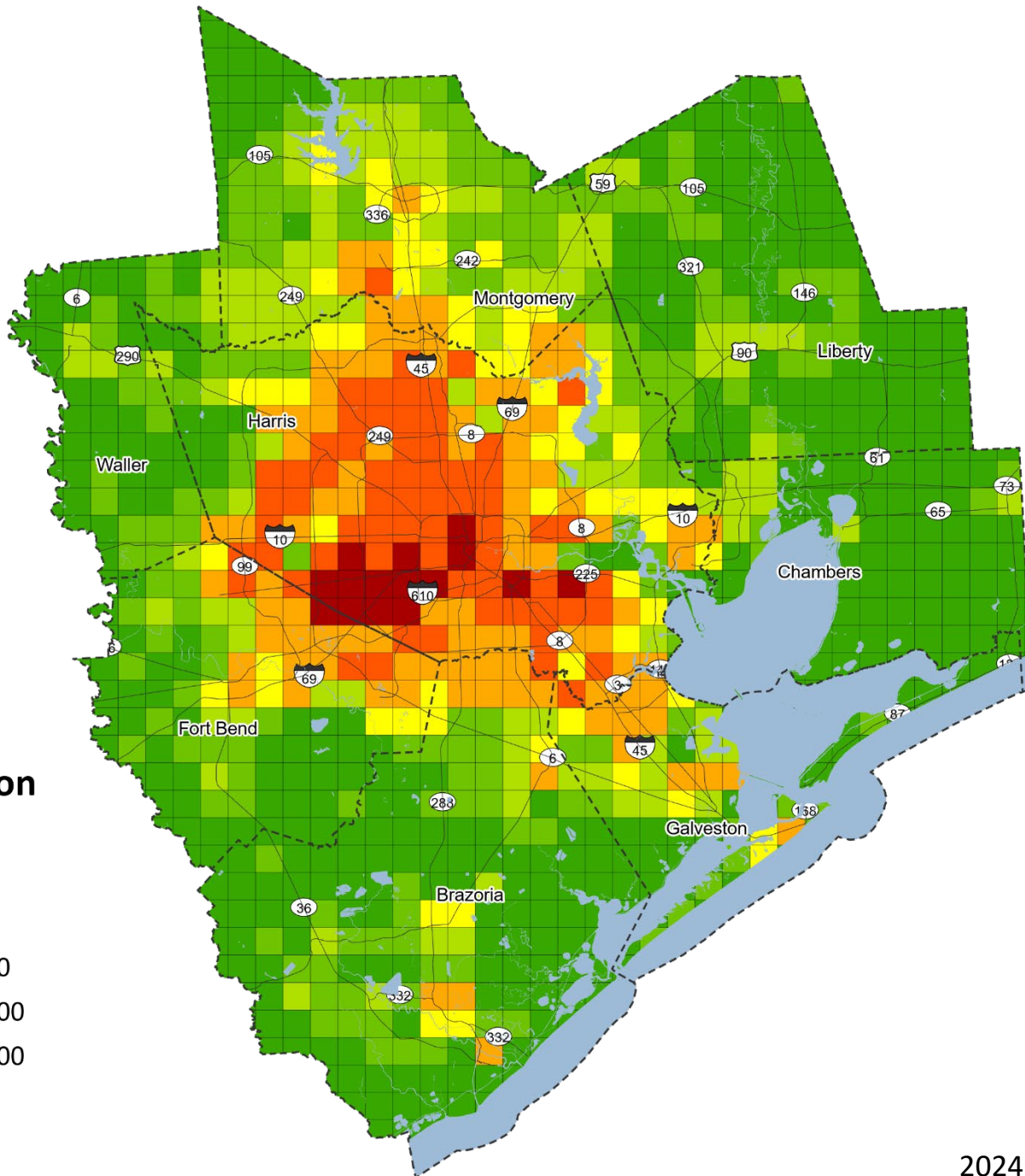
2024 (3x3 mile grid)

2000 Population



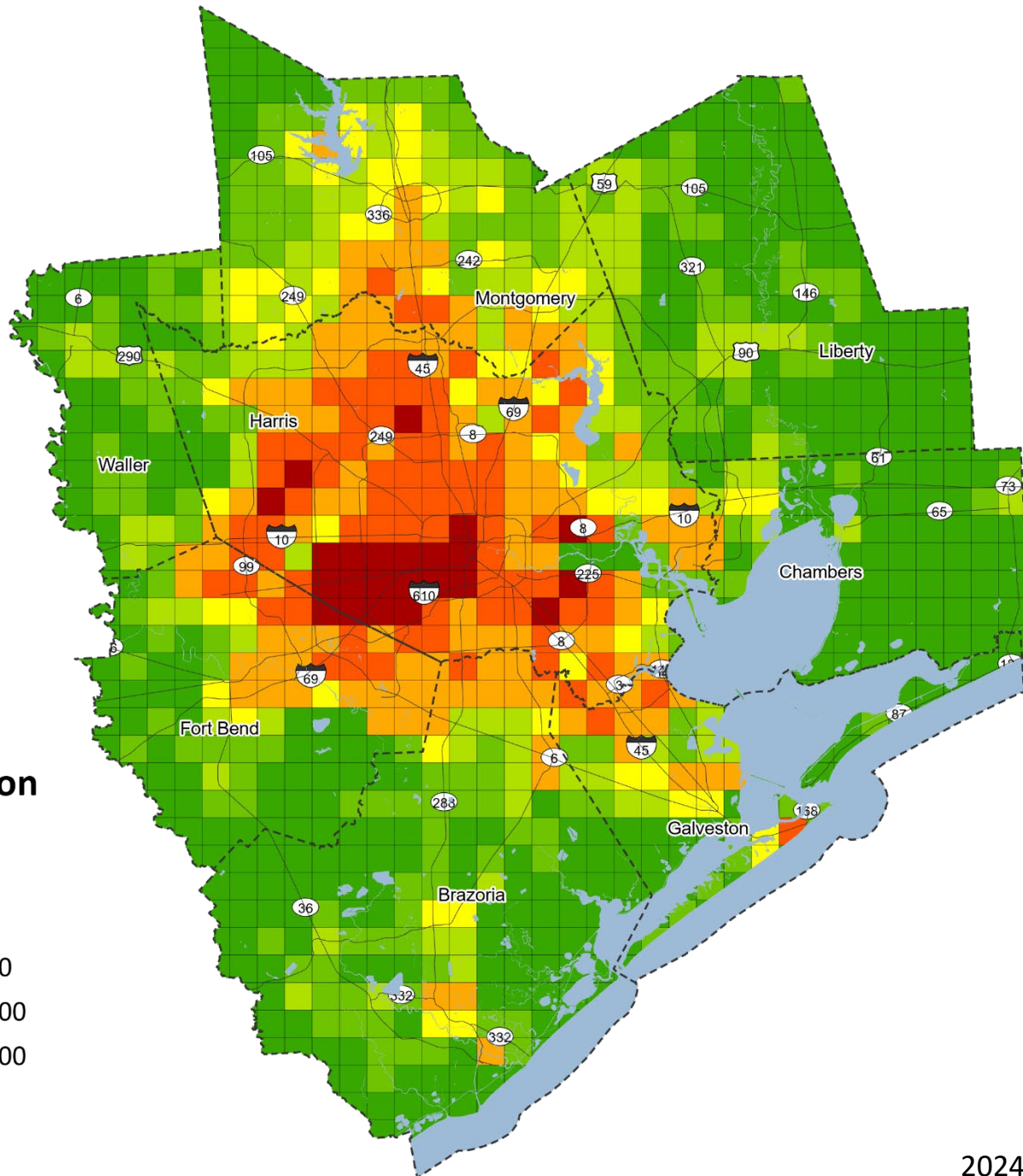
2024 (3x3 mile grid)

2010 Population



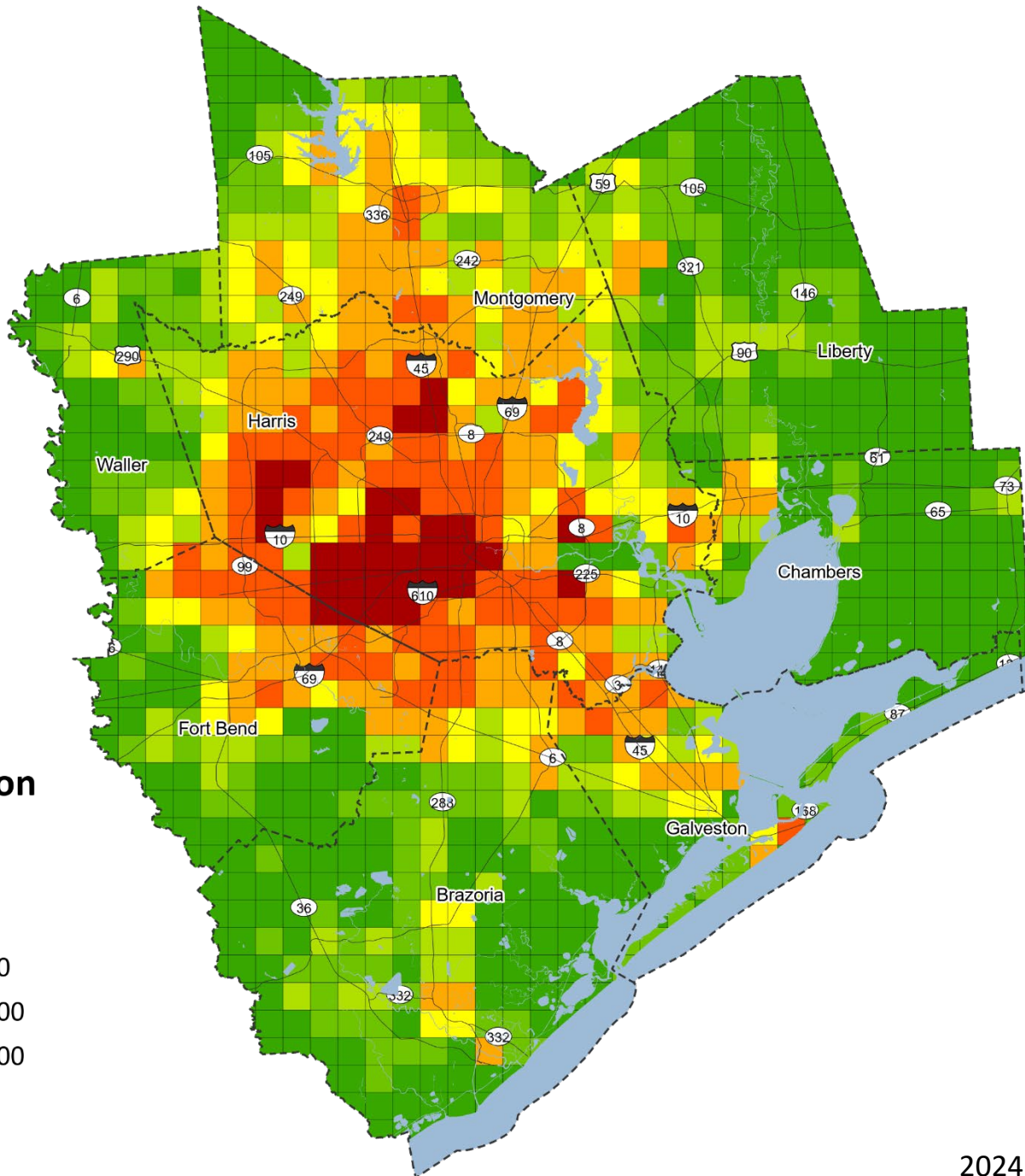
2024 (3x3 mile grid)

2020 Population



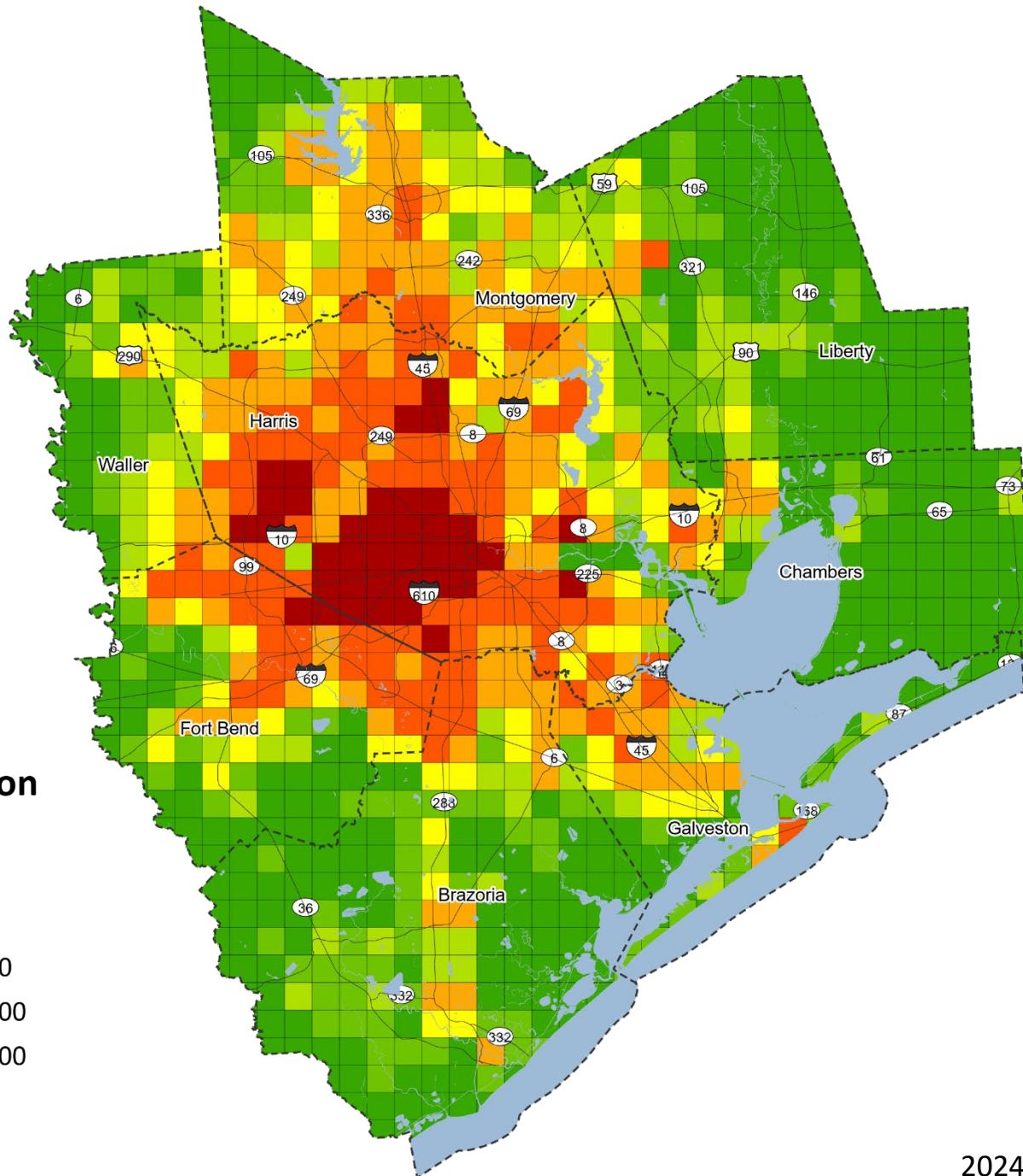
2024 (3x3 mile grid)

2030 Population



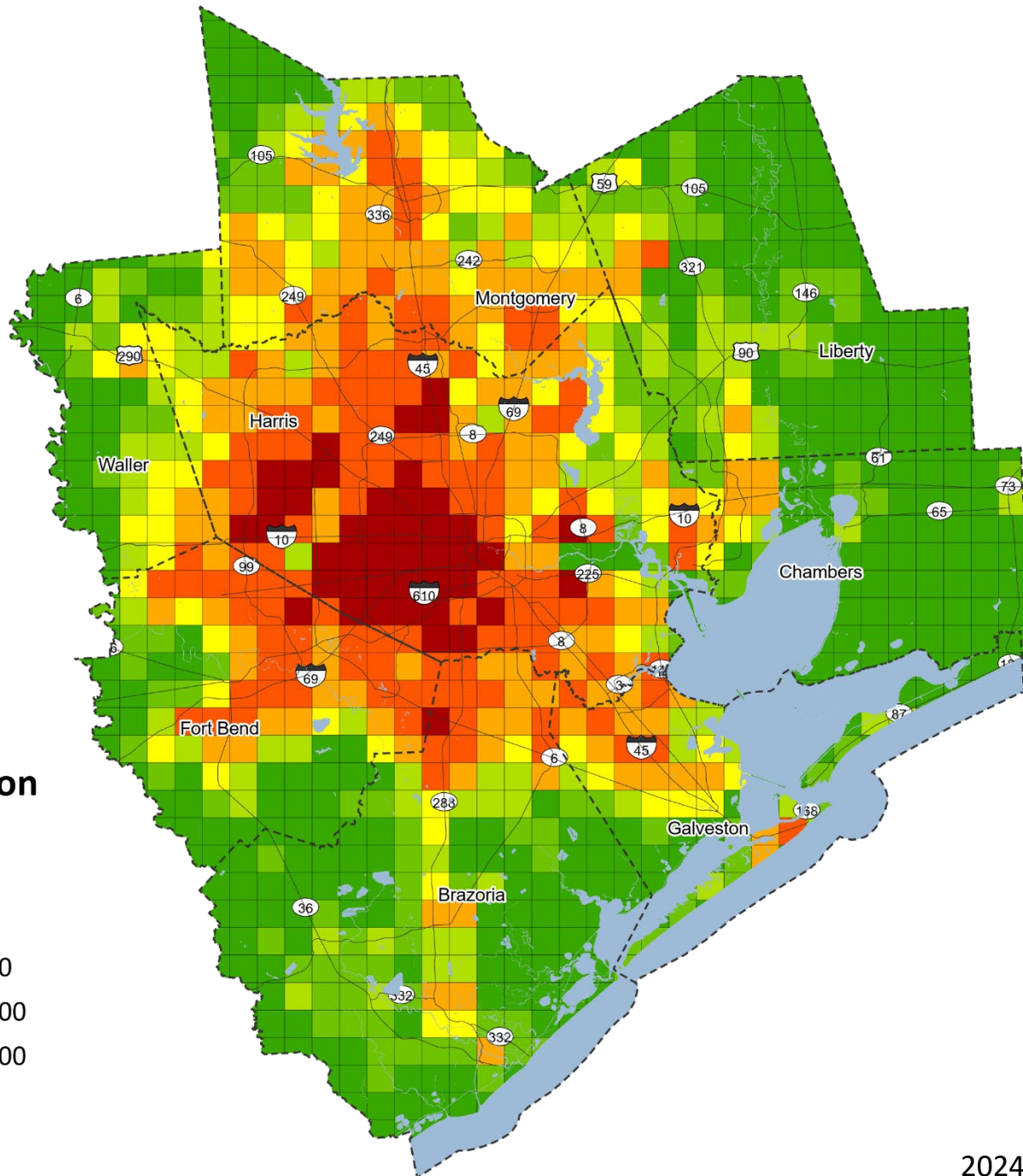
2024 (3x3 mile grid)

2040 Population



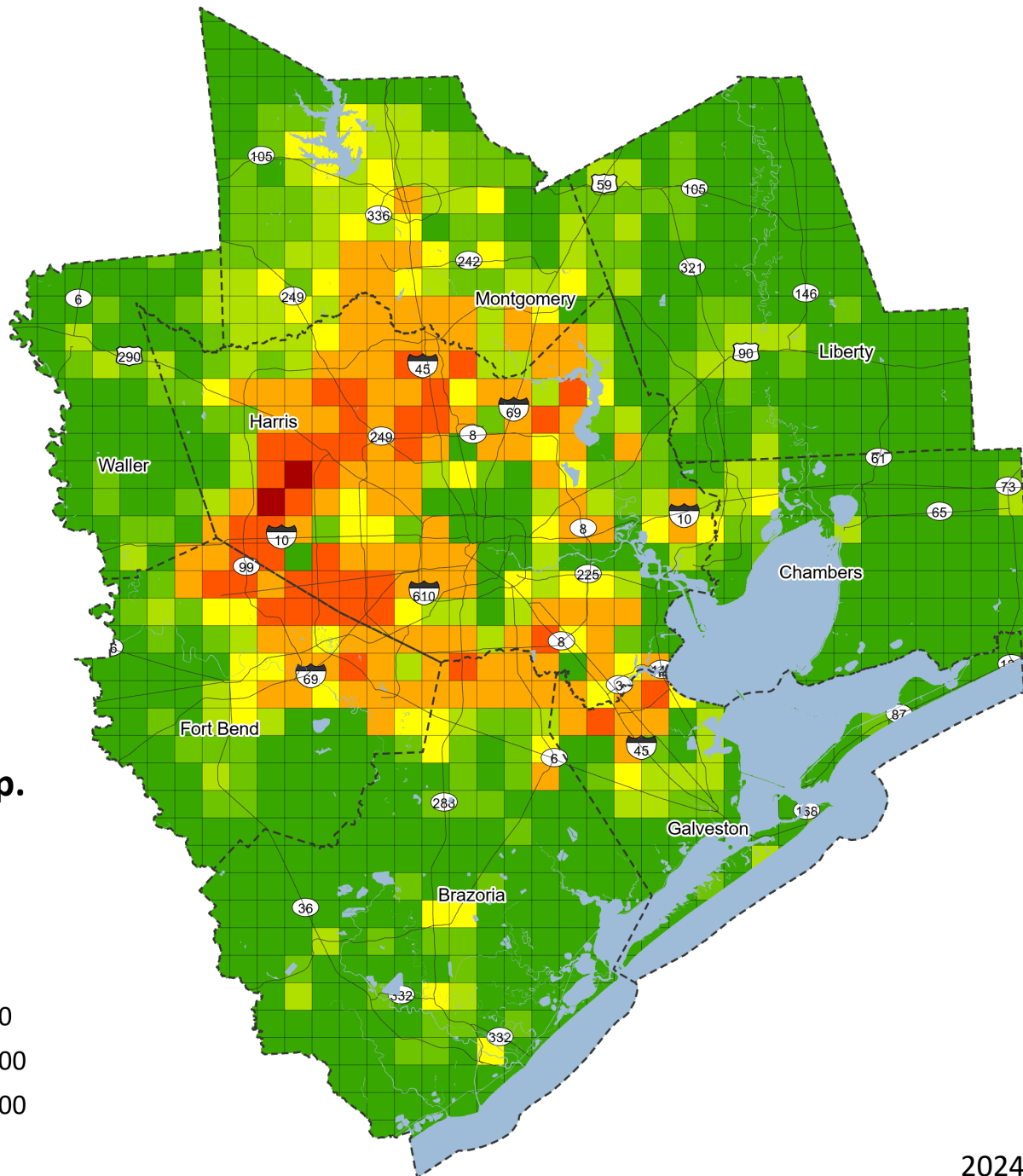
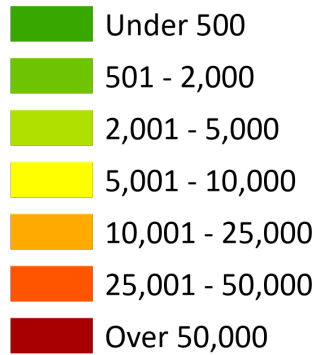
2024 (3x3 mile grid)

2050 Population



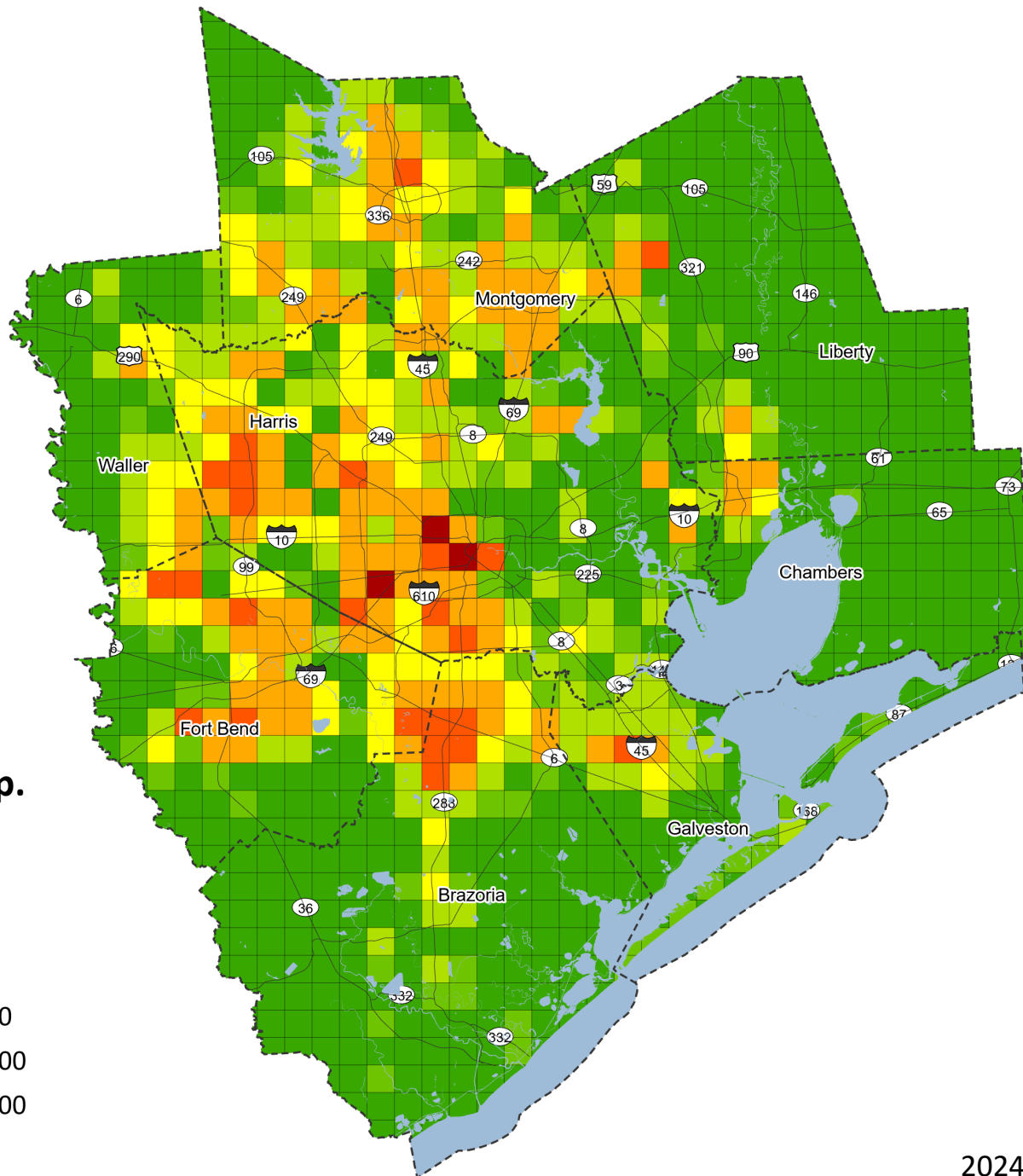
2024 (3x3 mile grid)

1980-2020 Pop. Change



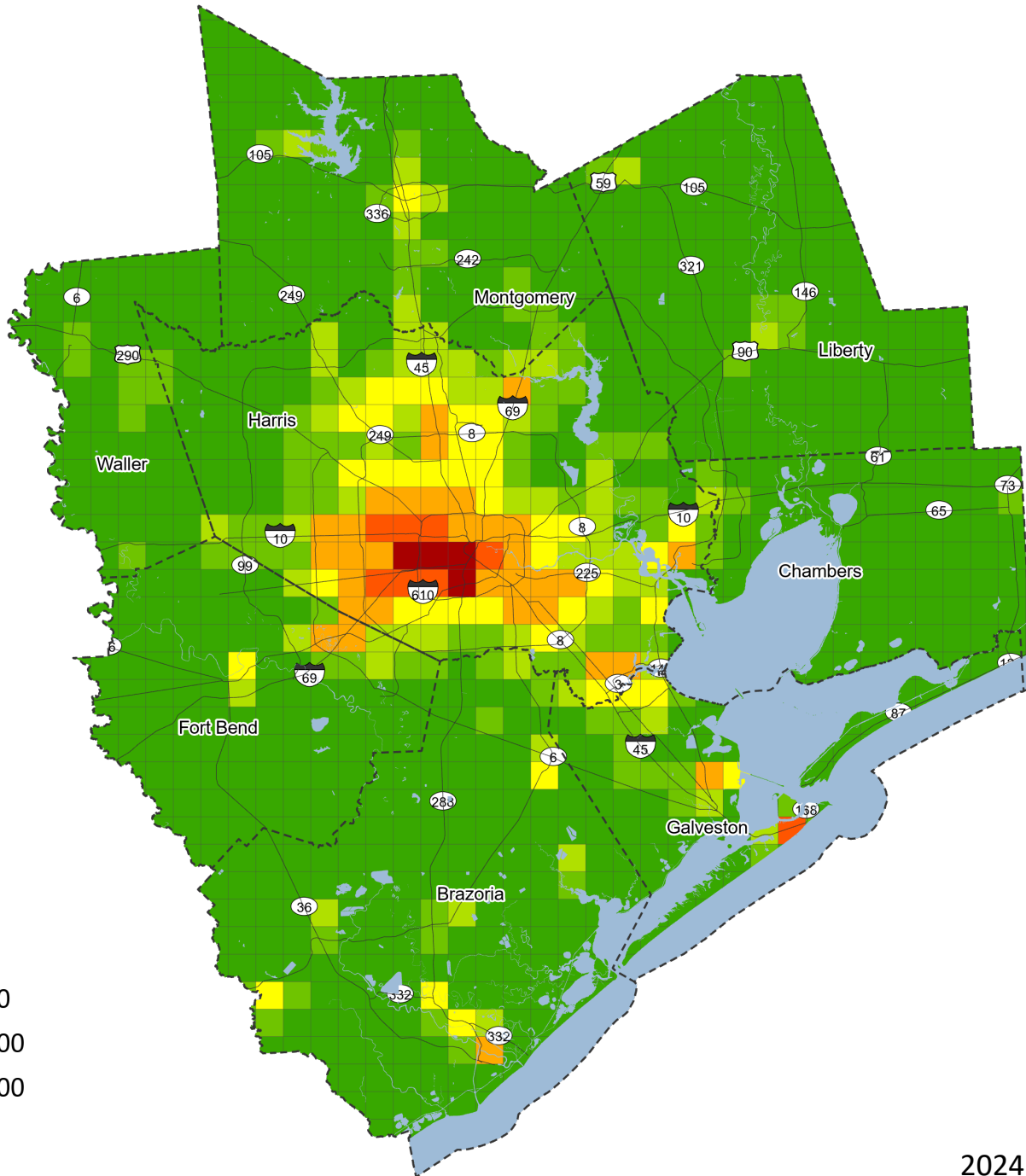
2024 (3x3 mile grid)

2020-2050 Pop. Change



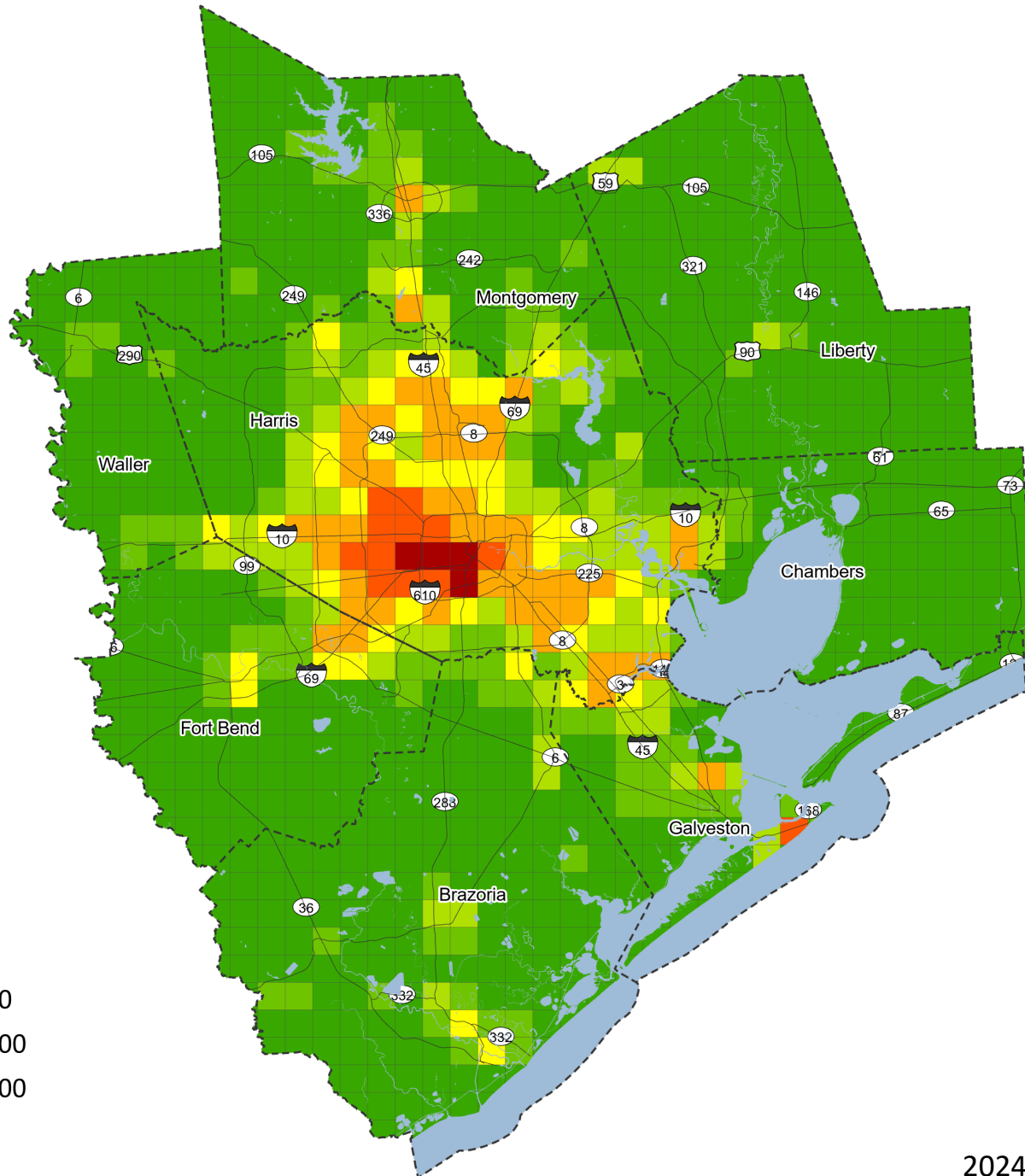
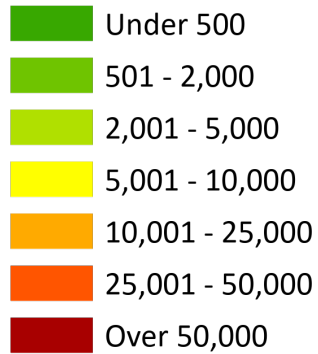
2024 (3x3 mile grid)

1990 Jobs



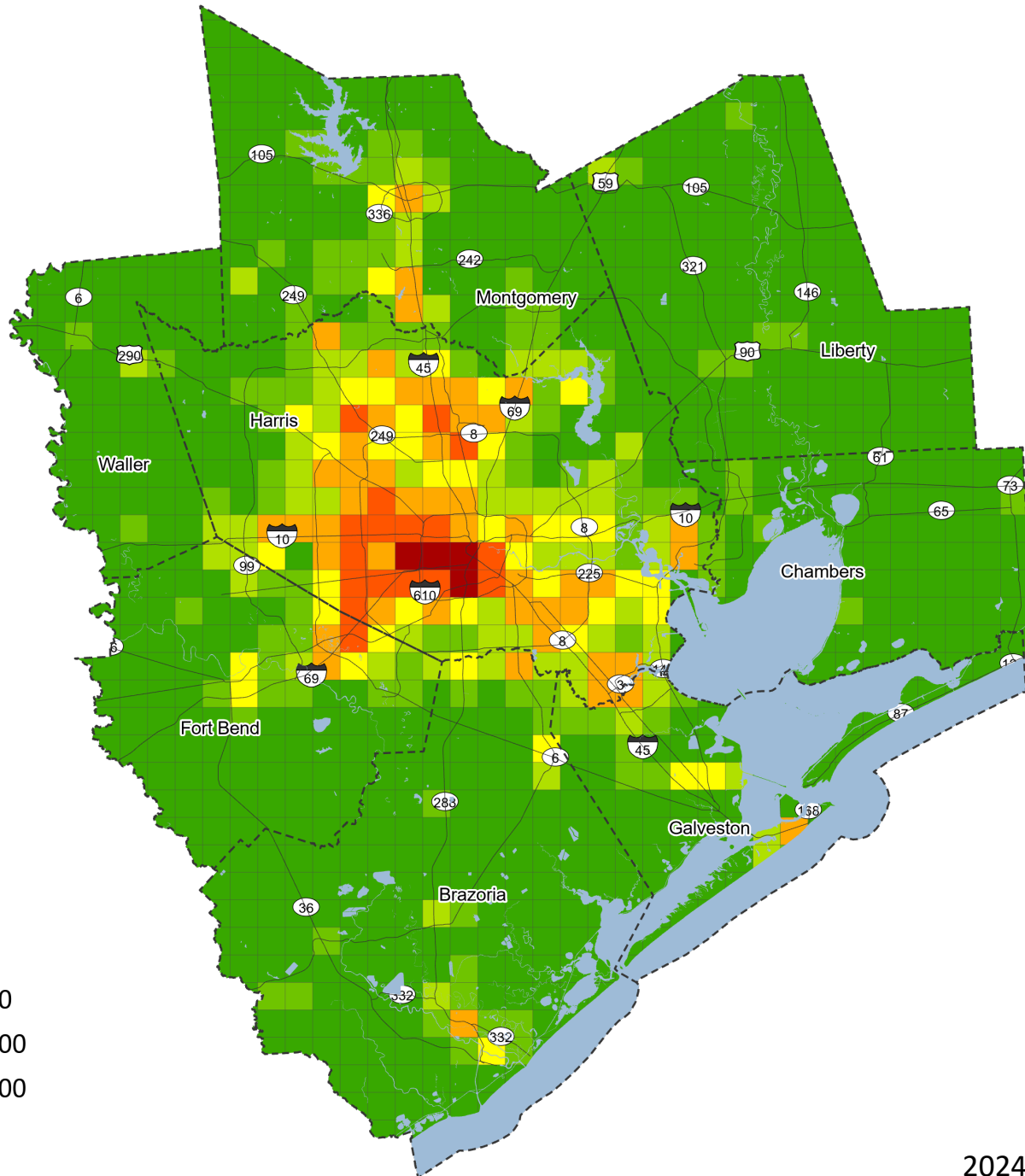
2024 (3x3 mile grid)

2000 Jobs



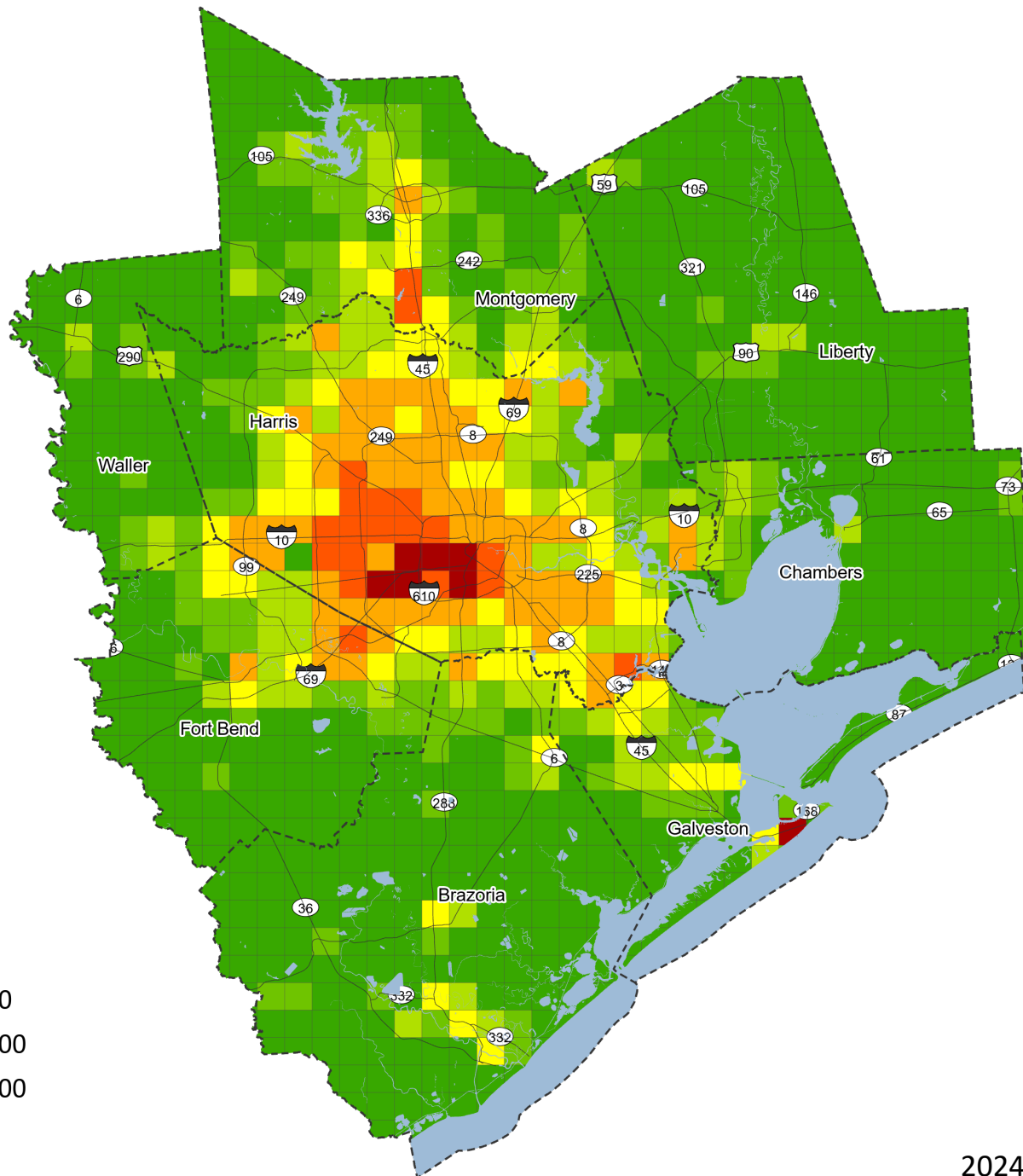
2024 (3x3 mile grid)

2010 Jobs



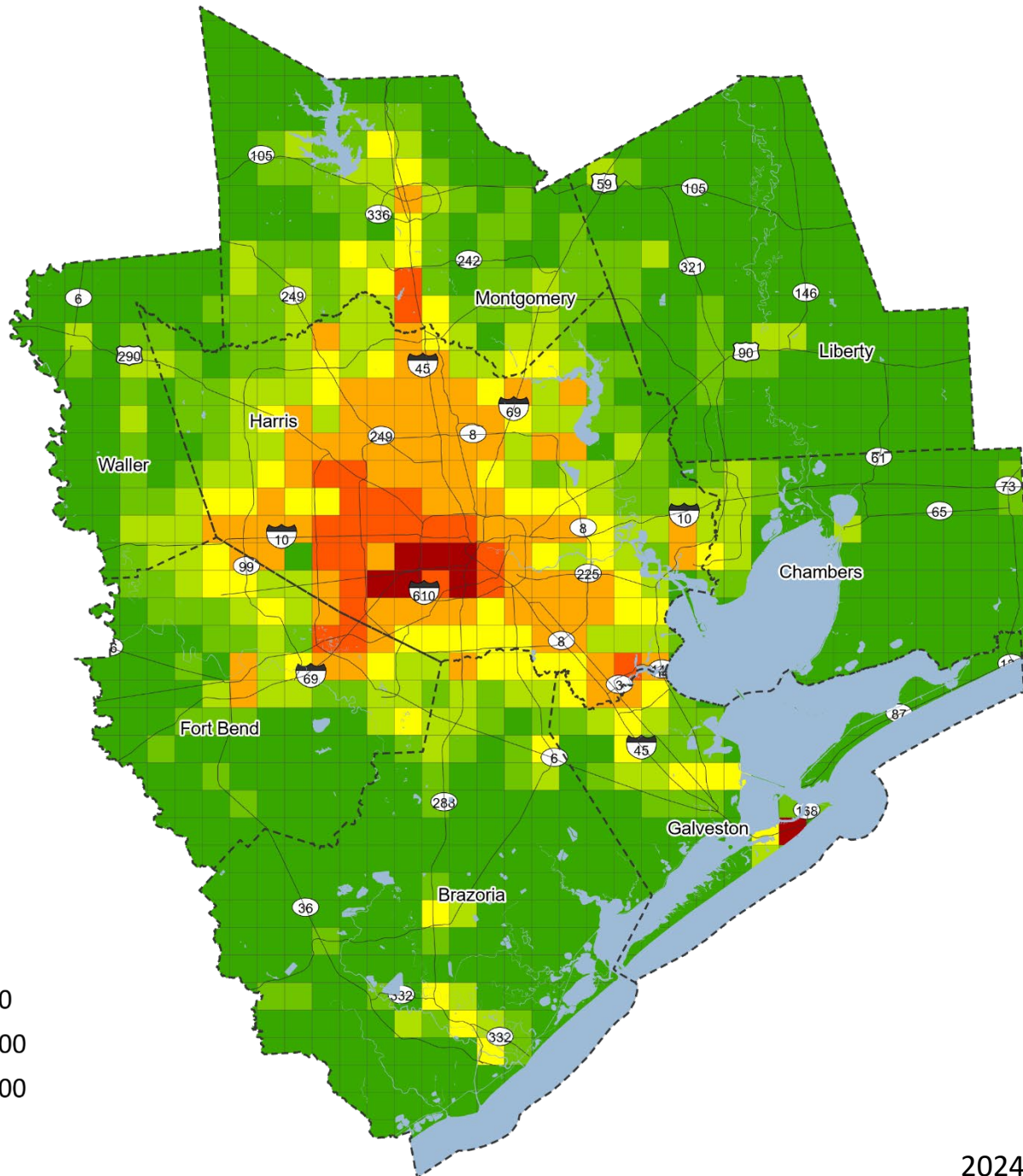
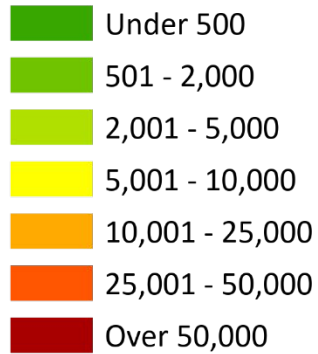
2024 (3x3 mile grid)

2020 Jobs



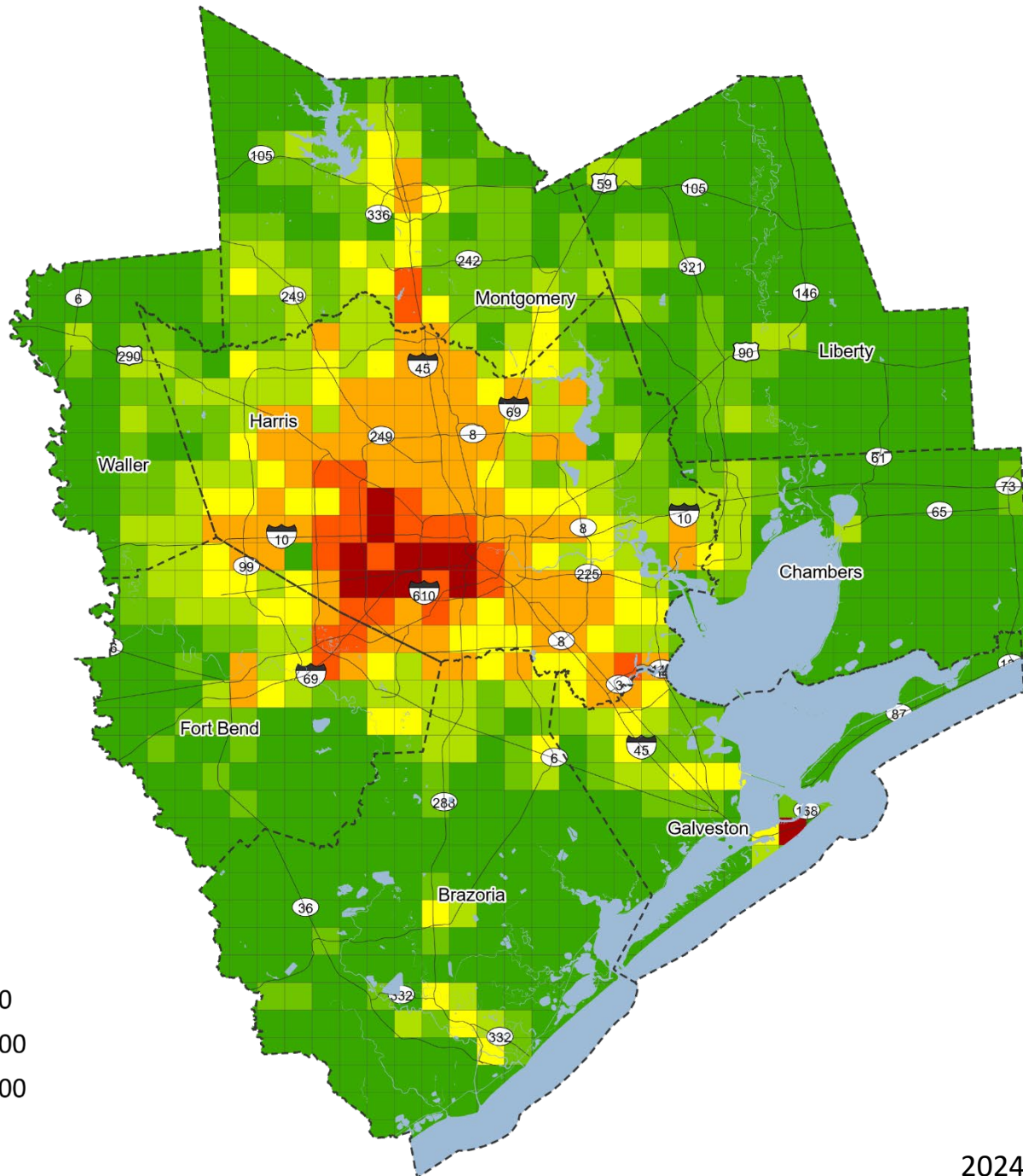
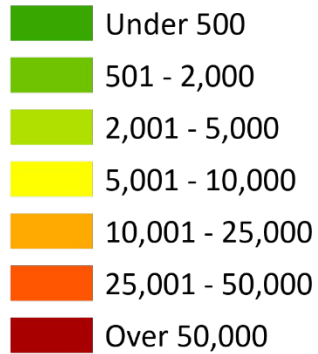
2024 (3x3 mile grid)

2030 Jobs



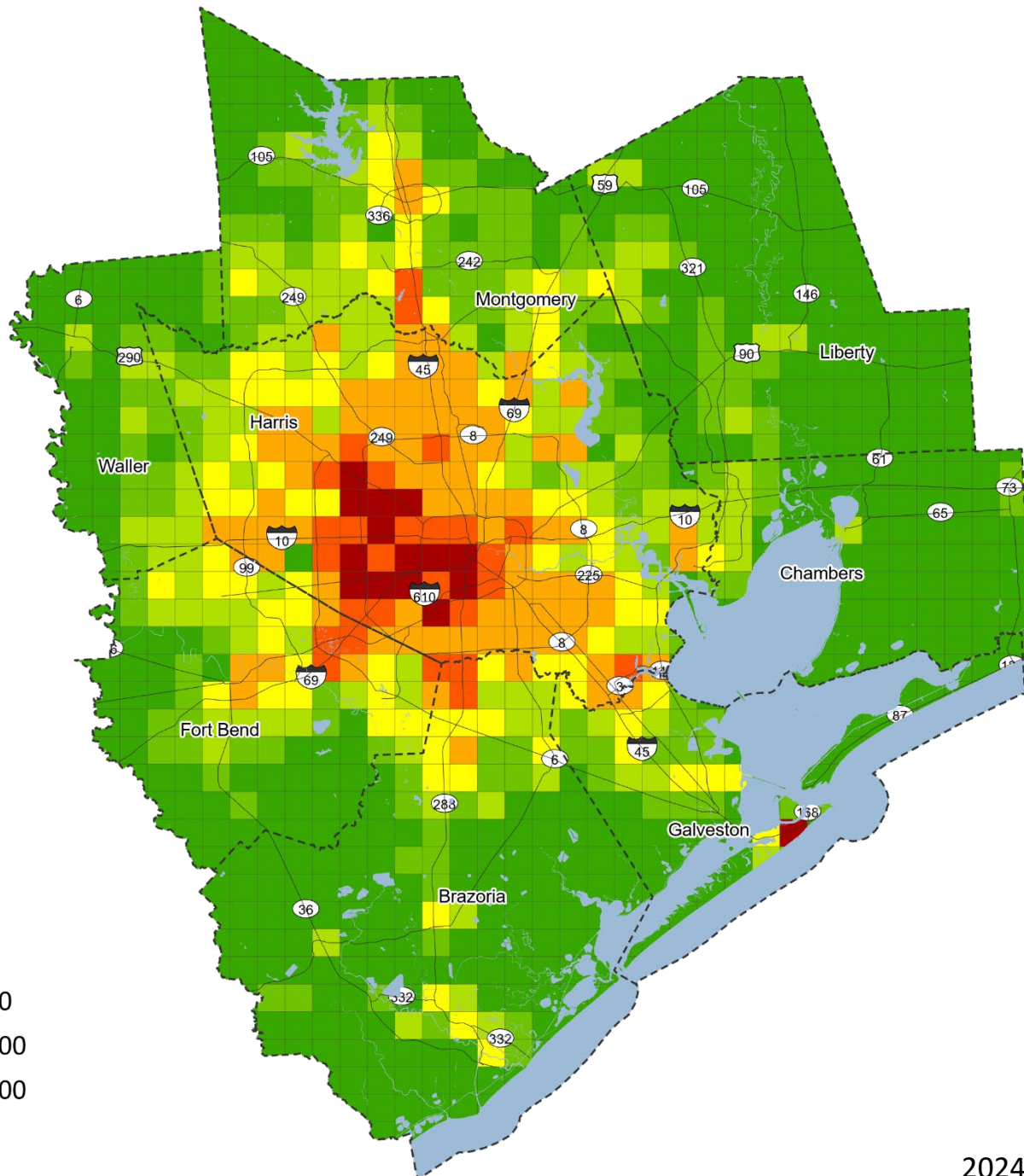
2024 (3x3 mile grid)

2040 Jobs



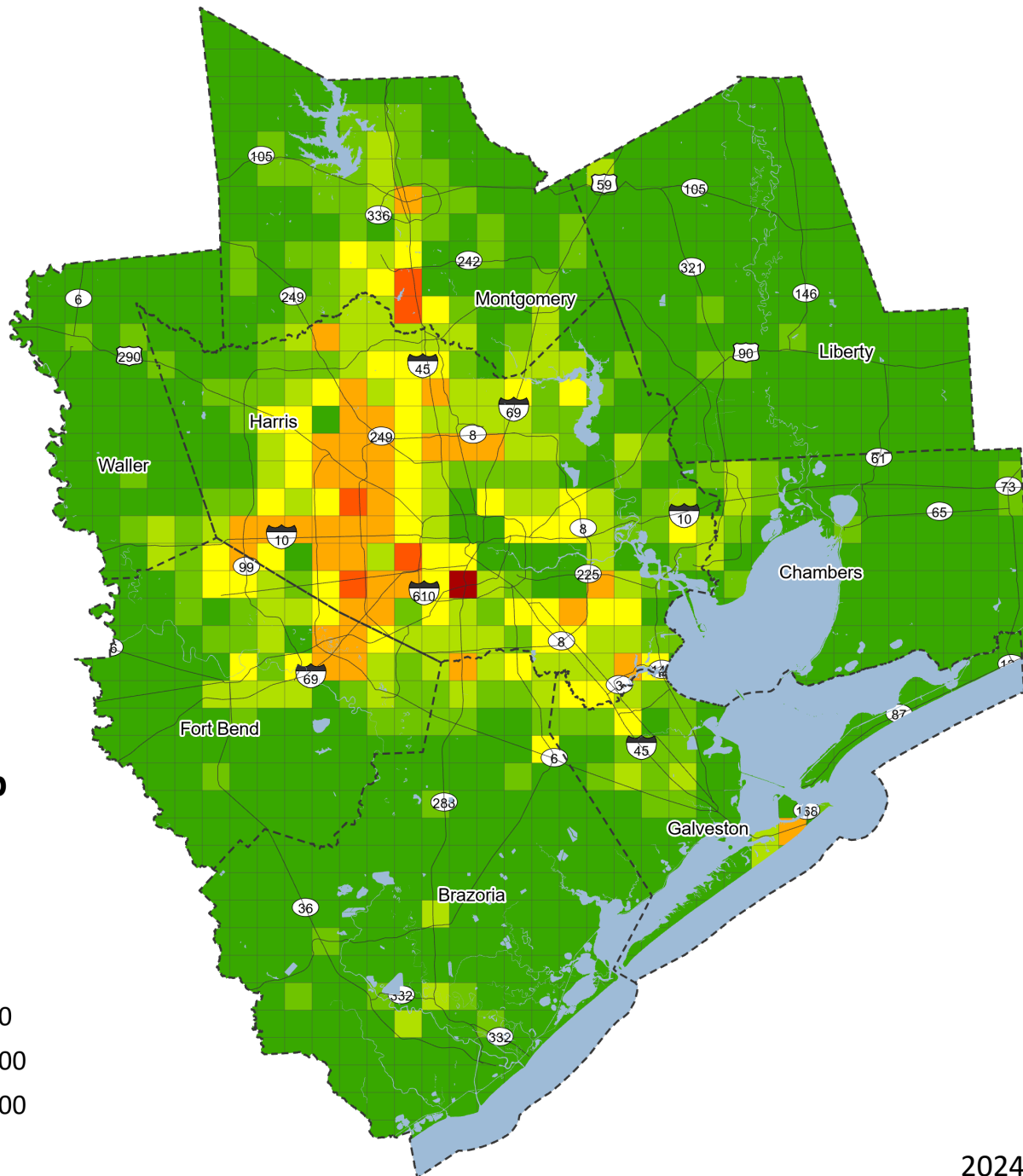
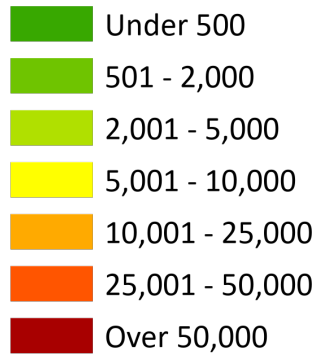
2024 (3x3 mile grid)

2050 Jobs



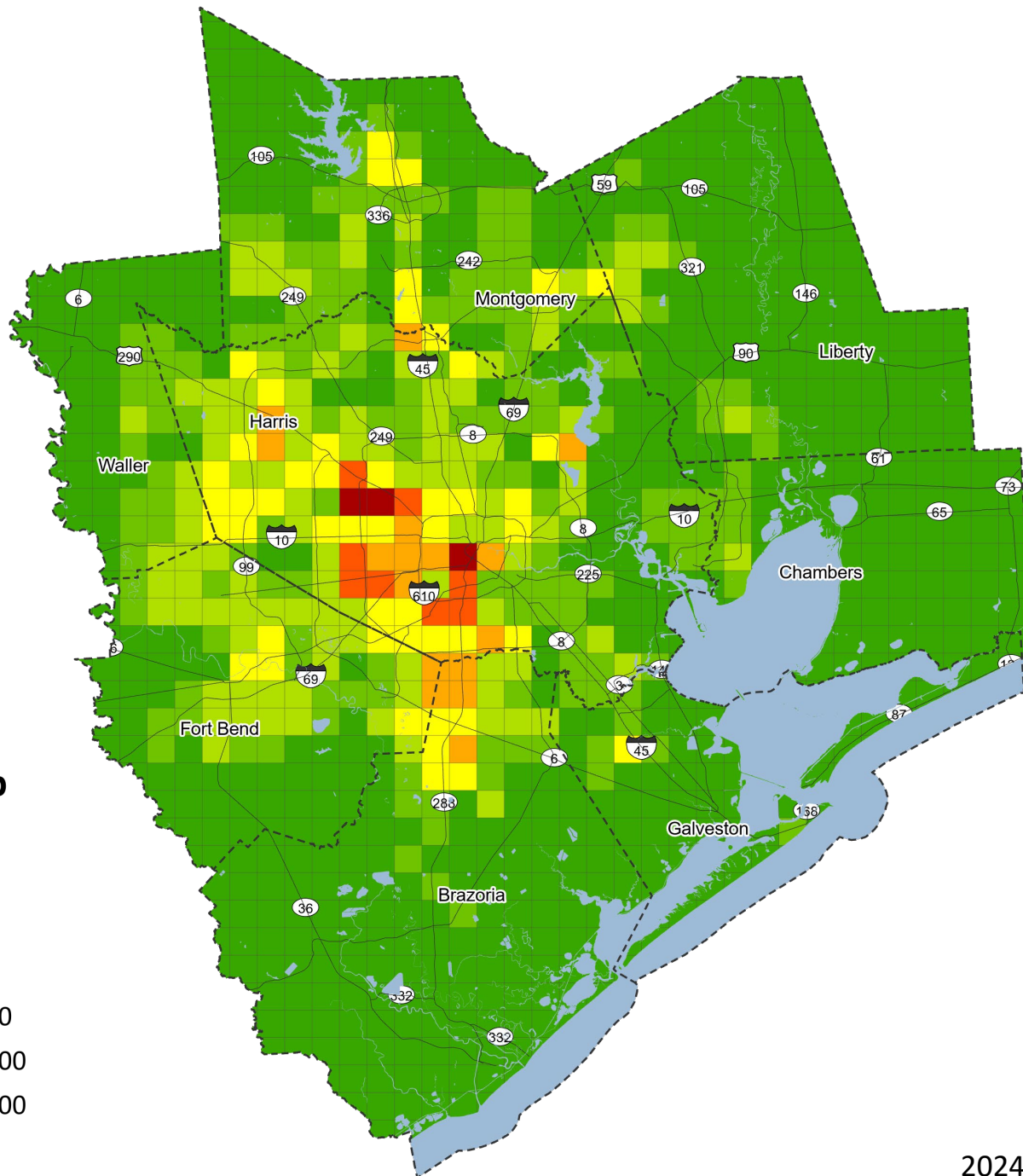
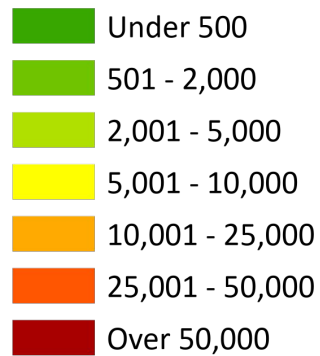
2024 (3x3 mile grid)

1990-2020 Job Change



2024 (3x3 mile grid)

2020-2050 Job Change



2024 (3x3 mile grid)