



Project Selection Process Funding Instructions



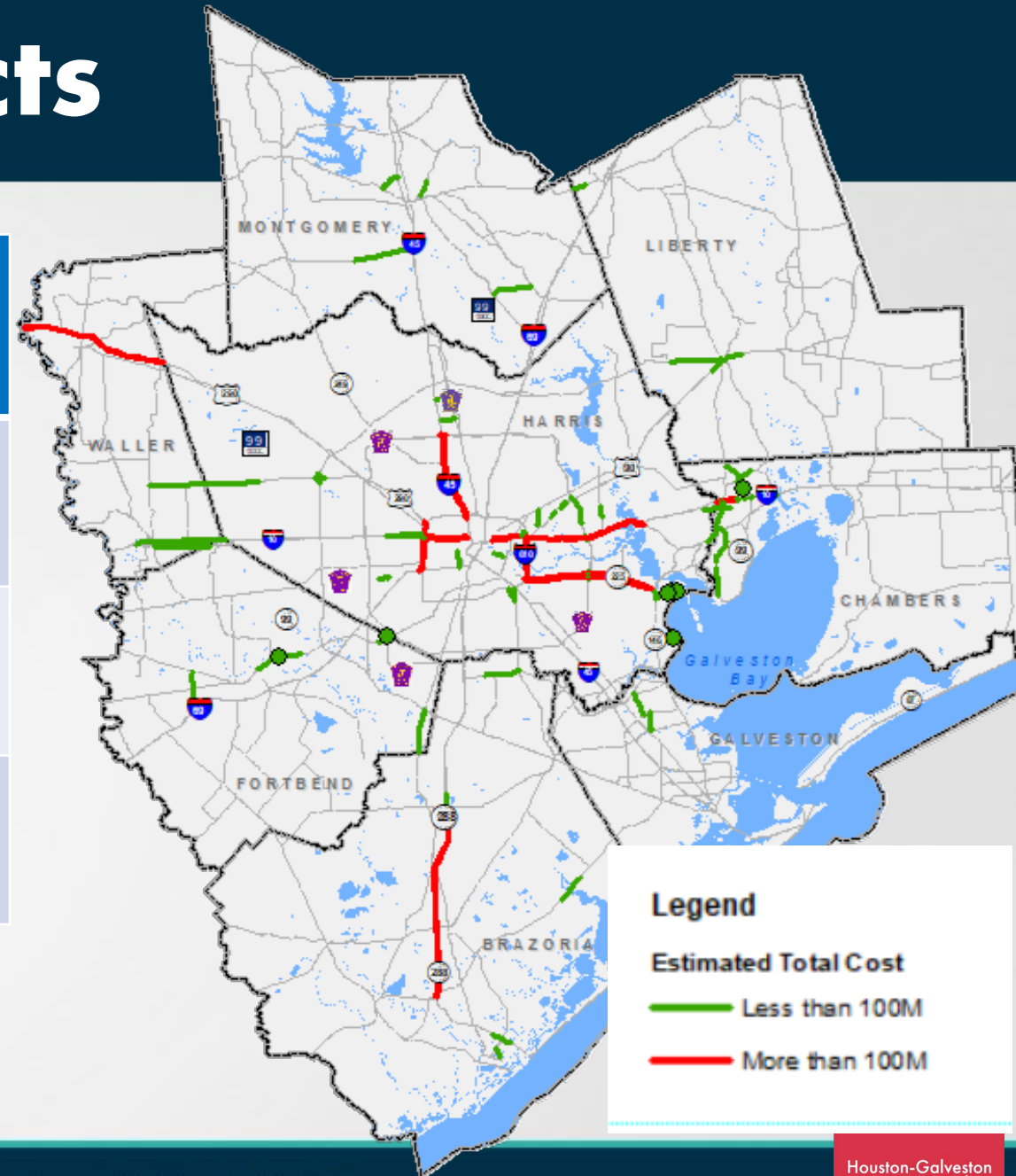
June 7, 2023

Regional Goods Movement Evaluation Status

- Sponsors submitted additional scoring information
- Online questionnaire closed on May 15, 2023
- 15 sponsors submitted 88 projects with cost of \$11.8B
- 64 Projects with cost of \$2.35B will be scored for Regional Goods Movement Criteria
- 24 Projects with cost greater than \$100M will be scored for major investment criteria
- Staff will start asking for Benefit-Cost and project readiness information in June/July.

Submitted RGM Projects

Submitted	Sponsors	Projects	Cost (\$B)
Total	15	88	\$11.80
> than \$100 M	2	24	\$9.45
< than \$100 M	15	64	\$2.35



Benefits Calculators

- Crash Reductions
- Delay Reductions
- Emission Reductions
- Total Benefits/ Costs
- Benefits/ Costs ratios in to points 0-100
 - Review outliers

Investment Categories: Purpose

Investment Category	Description and Purpose (“Identify, develop, and fund...”)
Regional Goods Movement	Projects that most effectively enhance or improve safe and reliable freight mobility throughout the region.
Major Projects	Projects that are regional in scope, most effectively address goals and priorities of the Transportation Policy Council or identified in the Regional Transportation Plan and exceed \$100 million in total estimated costs.
High-Growth Area Needs	Projects that most effectively address mobility, accessibility, and congestion mitigation needs in areas experiencing rapid or significant growth in population or other demographic measures, economic development, travel demand, or other indicators identified by local agencies.
Resiliency & State of Good Repair	Projects that most effectively help the transportation system avoid or recover quickly from events that create delays, closures, or other impacts, and projects that provide maintenance of current transportation facilities and services.
Operational Improvements & Congestion Management	Projects that most effectively deliver traffic management and other operational improvements, as well as mitigate current congestion.
Transit	Projects that most effectively provide, expand, or enhance transit infrastructure throughout the region.
Active Transportation	Projects that most effectively enhance or improve walking and bicycling for essential trip-making in the region.
Safety **	Projects that most effectively will reduce or eliminate crashes that result in fatalities and serious injuries.

Eligible Activities Potential Spending

Investment Category	Rehab/ Restoration	Added Capacity	New Road	Access Management	Intersection Improv.	ITS	Sidewalks/ Bike Lanes	Transit Facilities
Regional Goods Movement	11%*							
Operational Improvements	16%*							
High-Growth Area Needs	25%*							
Active Transportation	7.5%*							
Transit	7.5%*							
Major Projects (~25%*)	25%*							
Resiliency **	8%*							
Safety **								
Potential availability	26.5%	77%	61%	77%	92.5%	92.5%	65%	73.5%

Project Selection Funding Instructions

- Develop a recommendation for Transportation Policy Council to instruct level of investment in an Investment Category
- Two Approaches
 - Approach 1: Identify and achieve TPC's desired policy outcomes
 - Approach 2: Funding instructions proportional to the sponsor submittals
- Staff's potential recommendation is a combination of approaches 1 & 2

Funding Instruction Alternatives

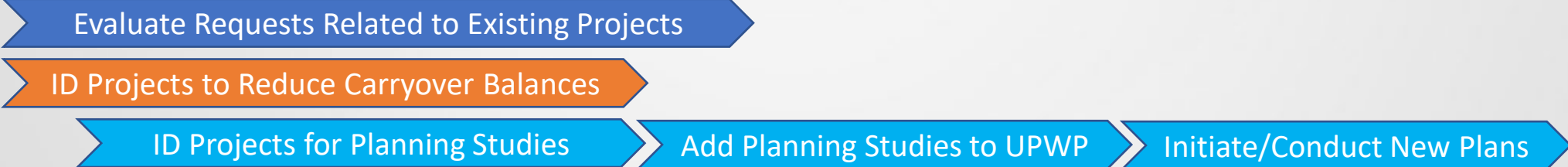
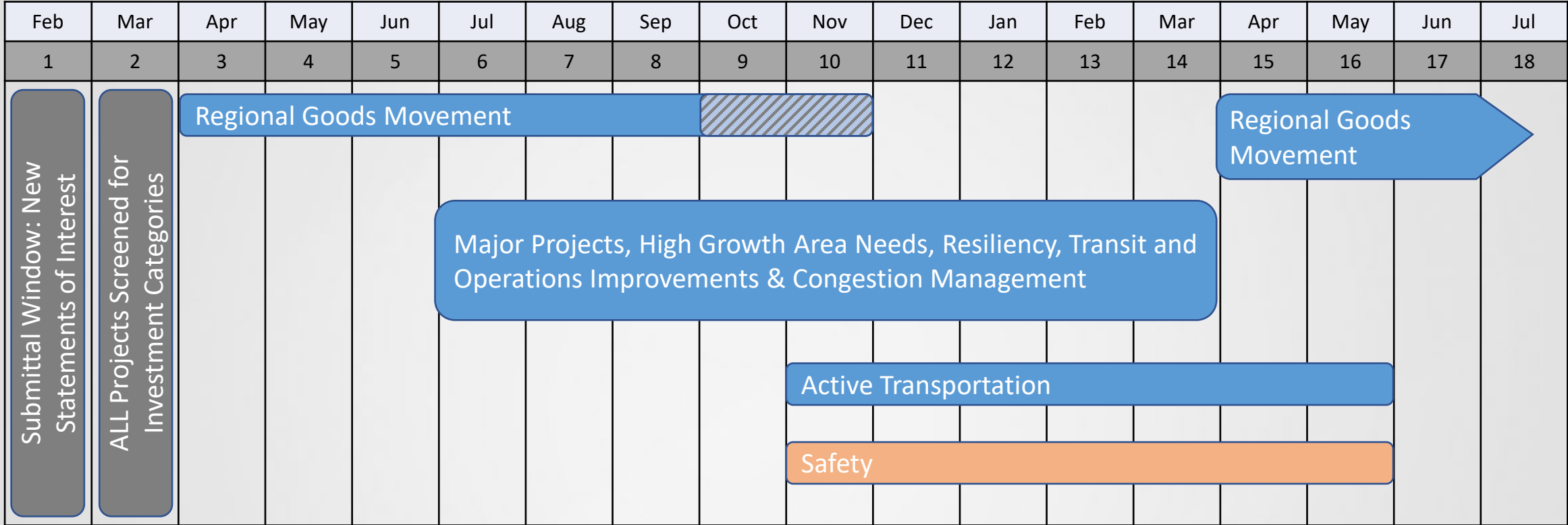
Investment Category	Initial Recommendation	Draft Funding Instructions			
		New Projects	No Fed/State	All	Adjusted
Regional Goods Movement	12%	11%	12%	14%	11%
Operational Improvements & Congestion Management	13%	22%	19%	19%	16%
High-Growth Area Needs	25%	19%	20%	21%	25%
Active Transportation	7.5%	10%	6%	6%	7.5%
Transit	7.5%	11%	13%	14%	7.5%
Major Projects	30%	17%	20%	19%	25%
Resiliency & State of Good Repair	5%	9%	9%	7%	8%
Safety **	TBD; ~\$30M/year				

TAC Discussion

- Increase transit category funding instruction from 7.5% to 10%
- Possible categories to consider for contributing 2.5%? to transit




Investment Category	Adjusted Funding Instructions
Regional Goods Movement	11%
Operational Improvements & Congestion Management	16%
High-Growth Area Needs	25%
Active Transportation	7.5%
Transit	7.5%
Major Projects	25%
Resiliency & State of Good Repair	8%
Safety **	TBD; ~\$30M/year

Investment Categories – Revised Timeline



Revised Timeline: Elements of Process

		Revised Project Selection Process Timeline										
		May	June	July	Aug	Sept	Oct	Nov	Dec	Jan	Feb	March
Selection Process Steps		1	2	3	4	5	6	7	8	9	10	11
Staff	Announce PSP											
Staff	Publish Evaluation Criteria											
Sponsors	Provide Additional Scoring Information - 45 days											
Staff	Staff Screens for Criteria (50 points Cutoff) - 45 days											
Sponsors	Provide Benefit - Cost Information											
Staff	Validation of Scores and BCAs											
Sponsors	Provide Readiness Information											
Staff	Project Readiness Determined (for Sorting)											
Staff	Ranked list Developed											
TAC/TPC	Ranked List Preview Approval											
Staff	TIP/RTP Amendments for AQ-Exempt Projects											
Staff	TIP/RTP Amendments for AQ-Non-Exempt Projects											TBD

-  July 1st Online Selection Criteria Questionnaire Opens
-  Aug 15th Selection Criteria Questionnaire Submitted
-  Oct 1st Benefits Templates Provided by Staff and Readiness Questionnaire opens
-  Oct 31st Benefits Templates and Readiness information Submitted

Scoring Point Distribution

Scoring Factor	Investment Category					
	Regional Goods Movement	Operational Improvements	High-Growth Area Needs	Active Transportation	Transit	Resiliency & SOGR
Regional Goods Movement	50	4	3	3	3	4
Operational Improvements	6	50	4	4	3	5
High-Growth Area Needs	5	4	50	4	4	3
Active Transportation	2	3	4	50	5	3
Transit	3	4	5	5	50	5
Resiliency & State of Good Repair	4	5	4	4	5	50
Planning Factors	30	30	30	30	30	30
TOTAL POINTS	100	100	100	100	100	100



Planning Factors Point Distributions

Planning Factor	Investment Category					
	Regional Goods Movement	Operational Improvements	High-Growth Area Needs	Active Transportation	Transit	Resiliency & SOGR
Safety	7	7	7	7	7	7
Resiliency	5	5	5	5	5	5
Access/Connectivity	5	5	5	5	5	5
Environmental Justice	5	5	5	5	5	5
Impact on Cultural/Natural	5	5	5	5	5	5
Innovation	3	3	3	3	3	3
Planning Factors Total	30	30	30	30	30	30
TOTAL POINTS	100	100	100	100	100	100
Screening Factor						
Planning Coordination						

High Growth Area Needs

Investment Category Focused Criteria	Max 50 Pts
Narrative defining high growth area needs	Up to 5 Pts
High growth area defined by local jurisdiction/Project recommended in a statewide, regional or a local plan	Up to 5 Pts
Provides access to new developments or expands existing networks to alleviate anticipated congestion	Up to 20 Pts
Project improves or provides new alternative route to existing corridor (Road or transit route)	Up to 10 Pts
Project is located on a state designated hurricane evacuation route or a facility that functions as an alternative route to a hurricane evacuation route	Up to 10 Pts

Resiliency and State of Good Repair (SOGR)

Investment Category Focused Criteria	Max 50 Pts
Regional significance/Scores high score on criticality	Up to 15 Pts
Narrative explaining how proposed project reduces inoperability for significant periods of time due to damaged infrastructure	Up to 5 Pts
Daily Users (AADT, Transit riders)	Up to 10 Pts
Condition and age of the facility	Up to 10 Pts
Project is located on a state designated hurricane evacuation route or a facility that functions as an alternative route to a hurricane evacuation route	Up to 10 Pts

Operational Improvements & Congestion Management

Investment Category Focused Criteria	Max 50 Pts
Existing congestion (TTI) (Quantitative)	Up to 10 Pts
Improvement (TTI) (Quantitative)	Up to 20 Pts
Congestion management strategy narrative (Qualitative)	Up to 10 Pts
Project improves hurricane evacuation (Qualitative)	Up to 10 Pts

Transit

Investment Category Focused Criteria	Max 50 Pts
Project recommended in a transit plan (Yes/No)	Up to 10 Pts
Expands or provides new transit service (Yes/No)	Up to 10 Pts
Provides connection to other transit services (service operated by other transit agency/fixed route/commuter/rail etc.)	Up to 5 Pts
Improves or provides new connectivity to jobs	Up to 5 Pts
Daily ridership (estimated ridership)	Up to 10 Pts
Narrative explaining how proposed transit project helps in evacuation during emergencies	Up to 10 Pts

Major Projects

Investment Category Focused Criteria	Max 100 Pts
Narrative explaining how Proposed project supports 2045 RTP update vision and Goals	Up to 25 Pts
Regional significance (Roadway facility FC/Commuter transit)	Up to 15 Pts
Project is located on a state designated hurricane evacuation route or a facility that functions as an alternative route to a hurricane evacuation route	Up to 10 Pts
Narrative explaining how project benefits to other investment categories	Up to 20 Pts
Planning factors	Up to 30 Pts

Next Steps/Timeline

	Elements of Process	Month
Sponsor	Additional information for RGM Projects Submitted	May
Staff	Scoring RGM Projects	June
TAC/TPC	Approve Funding Instructions	June
Staff	Publish Revised Timeline for 5 Categories	June
Staff	Publish Scoring Criteria for 5 Categories	June
Staff	Provide Benefits Calculator Templates and Project Readiness Forms for RGM	July
Sponsor	Benefits Calculator Templates and Project Readiness Forms for RGM Submission	July
Staff	Scoring BCA for RGM Projects	July
Staff	Ranked list of RGM Projects	August
Staff	Open Scoring Criteria Questionnaire for 5 Categories	July
Sponsor	Additional information for 5 Categories Submitted	Aug
Staff	Scoring 5 Category Projects	Aug/Sept
Staff	Provide Benefits Calculator Templates and Project Readiness Forms for 5 Categories	Oct
Sponsor	Benefits Calculator Templates and Project Readiness Forms for 5 Categories Submission	Oct
Staff	Scoring BCA for 5 Category Projects	Nov
Staff	Ranked list of 5 Category Projects	Dec