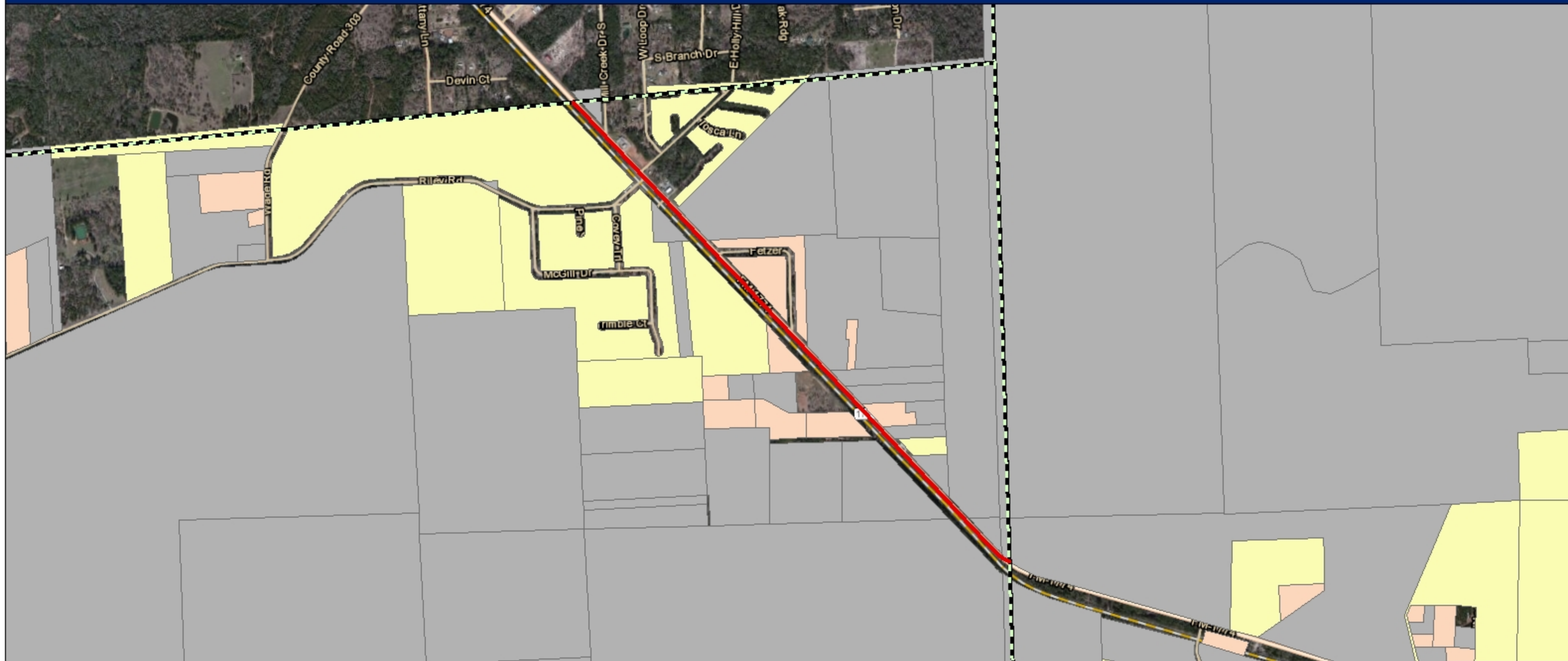


CSJ Number: 1400-03-006
MPO Number: 7407
County: Waller

FM 1774 Widening

from Grimes C/L to Montgomery C/L



Description: Widen to 4-lane divided rural

Legend: (Source: H-GAC)

- | | |
|---------------------------------------|----------------------------|
| Commercial | Proposed TxDOT TIP Project |
| Government/Medical/Education | Hospital |
| Government/Medical/Education | Library |
| Industrial | Metro Bus Stops |
| Multiple | Metro Park and Rides |
| Parks/Open Spaces | Schools |
| Residential | |
| Vacant Developable (includes Farming) | |