

INPUTS

Project Identification	
Name:	FM 2354
Application ID Number:	300798
Sponsor ID Number (CSJ, etc.):	

Import from Crash History Data Tab?

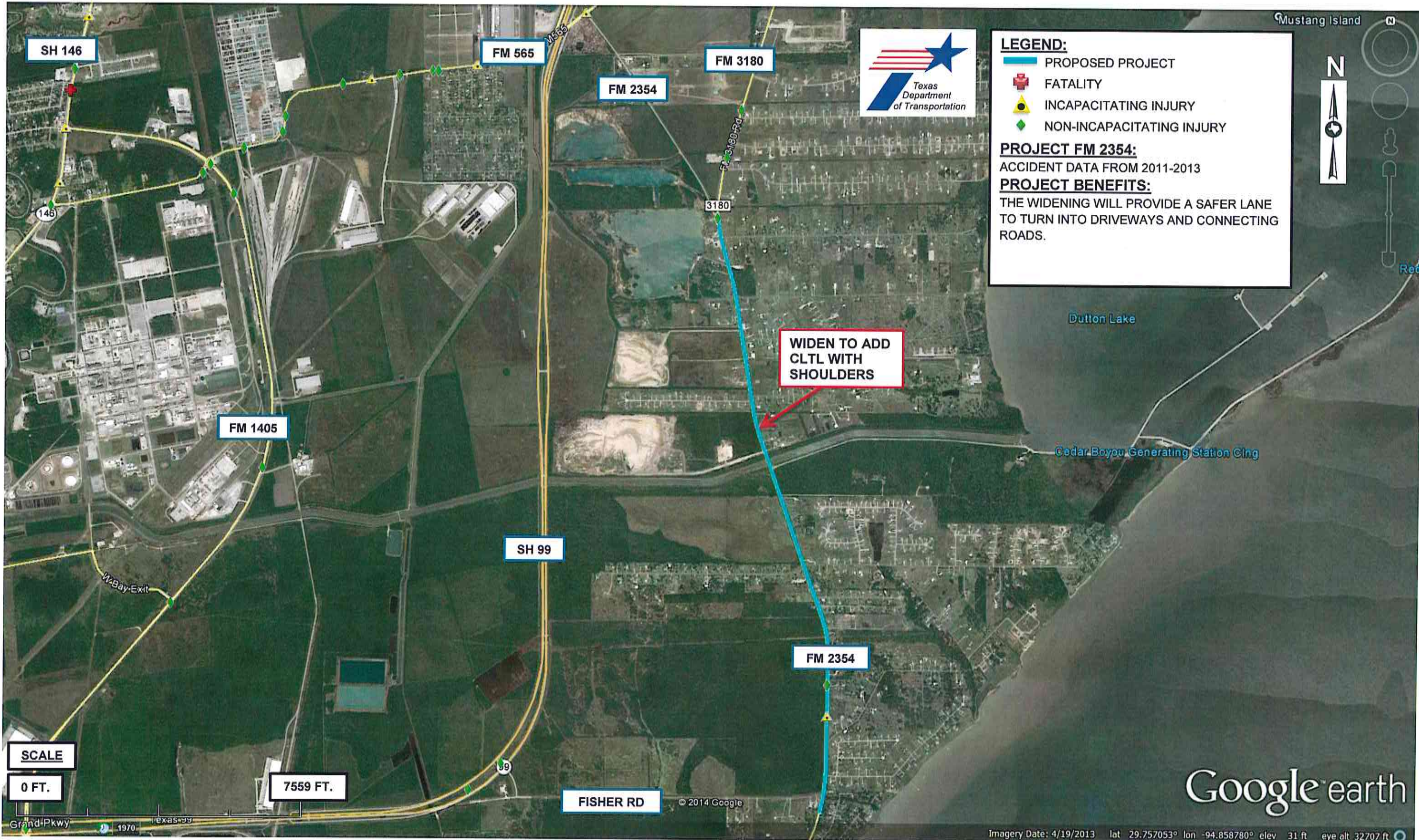
Improvement Information	
Year Open to Traffic? (Must be >=2018)	2018
Appropriate Crash Reduction Factor (%):	46%
Service Life (years):	20

Daily Travel Demand	<i>With Project</i>
2018 Volume	2,600
2018 Capacity	12,200
2025 Volume	3,100
2025 Capacity	12,200
2040 Volume	4,300
2040 Capacity	12,200

Preventable Crash History	Year 1	Year 2	Year 3	Average
Death_Cnt	0	0	0	0.00
Incap_Injry_Cnt	0	0	1	0.33
Nonincap_Injry_Cnt	1	0	0	0.33
Poss_Injry_Cnt	1	2	0	1.00
Non_Injry_Cnt	2	2	6	3.33
Unkn_Injry_Cnt	0	0	0	0.00

OUTPUTS

Benefit Results	
Discounted Safety Benefits @ 7% (2015 \$, '000s)	\$1,376
Discounted Safety Benefits @ 3% (2015 \$, '000s)	\$2,145



LEGEND:

- PROPOSED PROJECT
- + FATALITY
- ▲ INCAPACITATING INJURY
- ◆ NON-INCAPACITATING INJURY

PROJECT FM 2354:
ACCIDENT DATA FROM 2011-2013

PROJECT BENEFITS:
THE WIDENING WILL PROVIDE A SAFER LANE TO TURN INTO DRIVEWAYS AND CONNECTING ROADS.

WIDEN TO ADD CLTL WITH SHOULDERS

SCALE
0 FT. 7559 FT.

Google earth