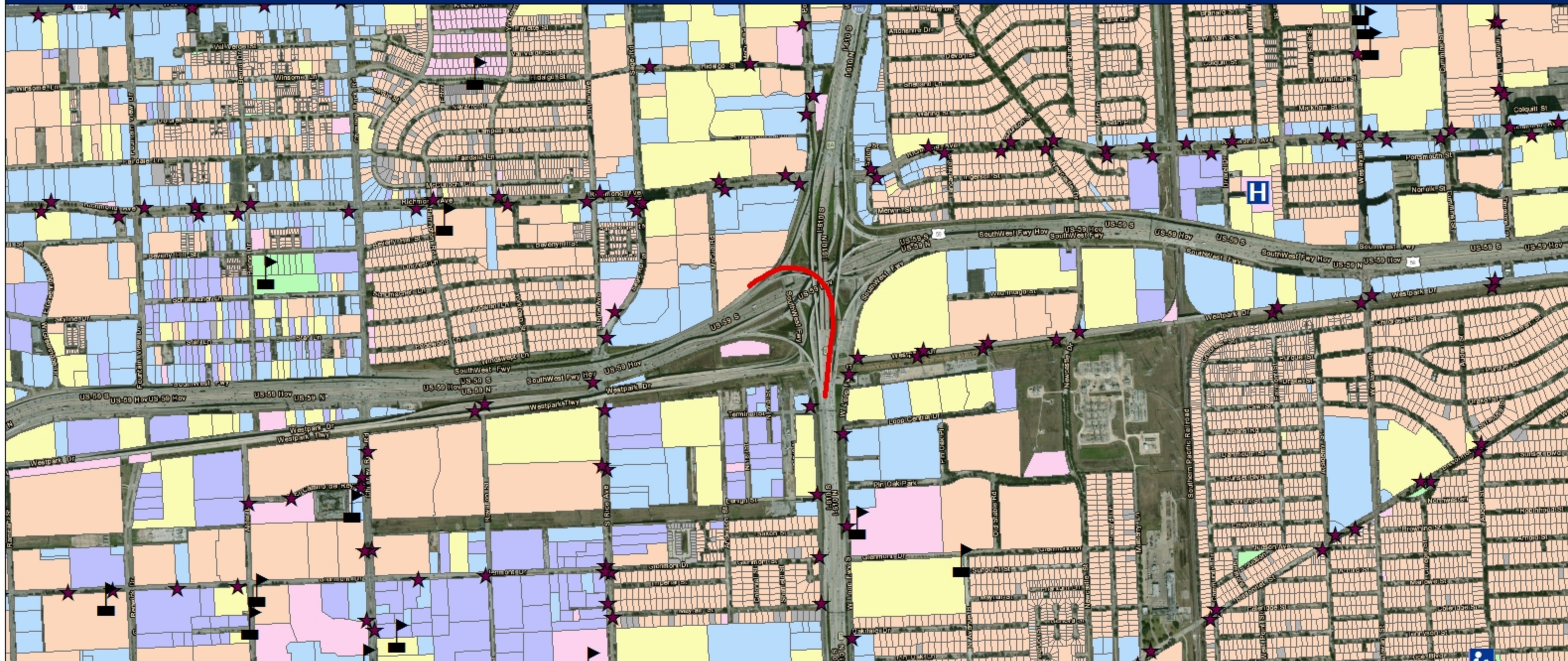


IH 610 @ US 59 S Director Connector (NB/SWB)

from IH 610 (NB) to At US 59 (STR #104) to SB



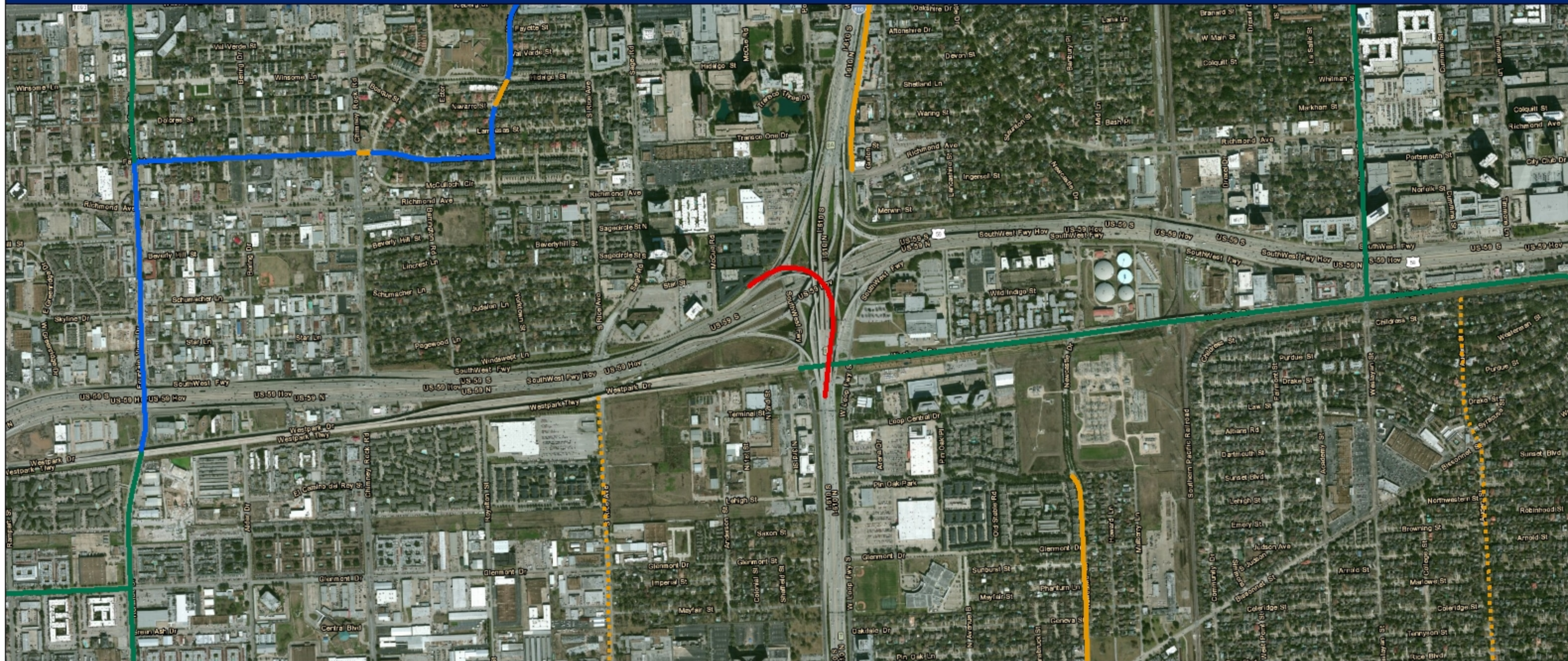
Description: Construct direct connector (IH 610 NB to US 59 SB)

Legend : (Source: H-GAC)

- | | |
|---------------------------------------|----------------------------|
| Commercial | Proposed TxDOT TIP Project |
| Government/Medical/Education | Hospital |
| Government/Medical/Education | Library |
| Industrial | Metro Bus Stops |
| Multiple | Metro Park and Rides |
| Parks/Open Spaces | Schools |
| Residential | |
| Vacant Developable (includes Farming) | |

IH 610 @ US 59 S Director Connector (NB/SWB)

from IH 610 (NB) to At US 59 (STR #104) to SB



Description: Construct direct connector (IH 610 NB to US 59 SB)

Legend : (Source: H-GAC)

- Proposed TxDOT TIP Project
- Existing Bike Lane
- Existing Shared Use Path/Trail
- Existing Signed Shared Roadway
- Existing Signed Shoulder Bike Route
- - - - Proposed Bike Lane
- - - - Proposed Shared Use Path/Trail
- - - - Proposed Signed Shared Roadway
- - - - Proposed Signed Shoulder Bike Route