

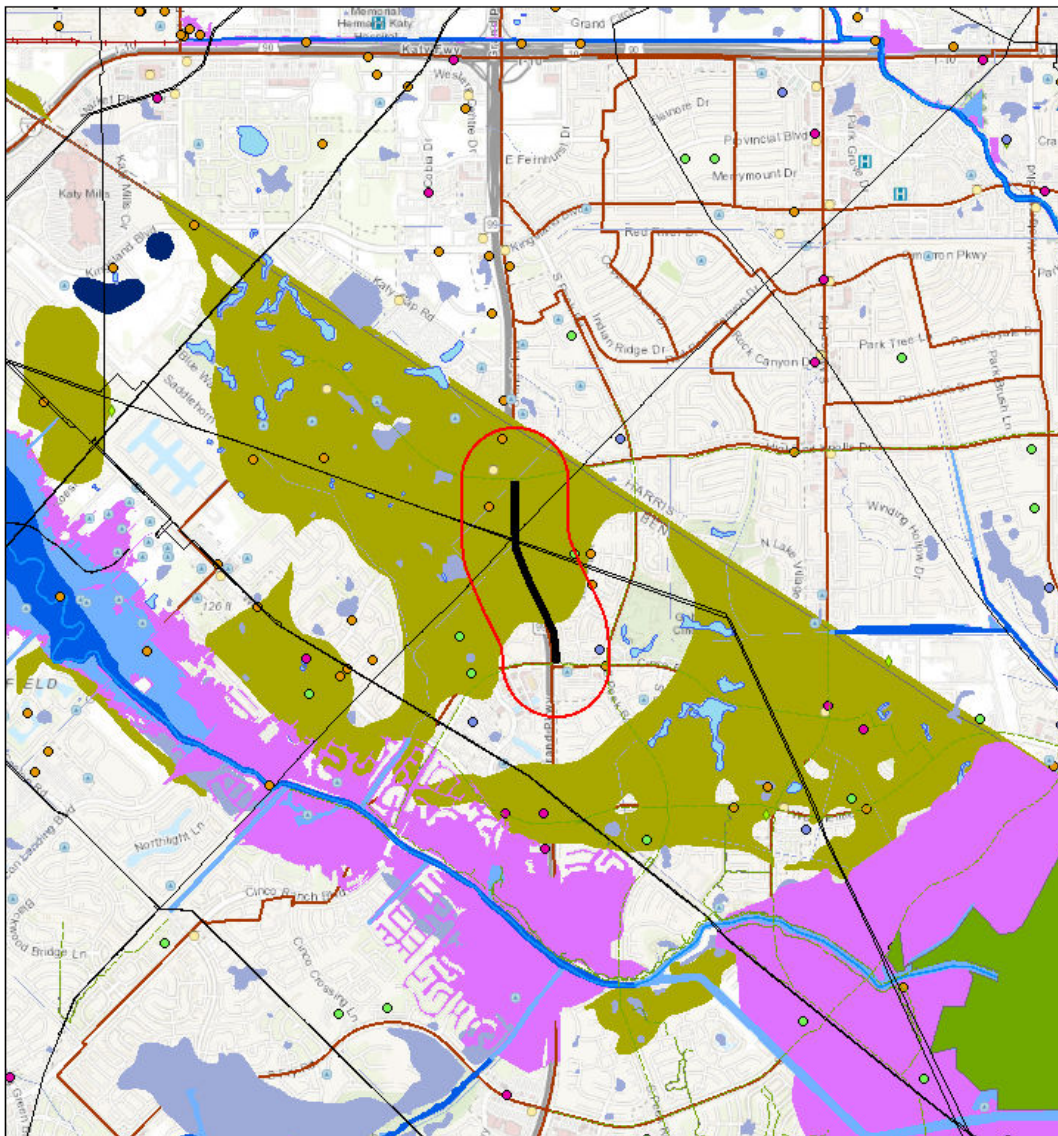
# Red Flag Report

## Area of Interest (AOI) Information

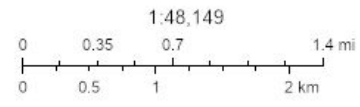
Area : 407.44 acres

Jan 22 2024 14:57:40 Central Standard Time

### Letter ANSI A Portrait



- |  |                                 |                              |
|--|---------------------------------|------------------------------|
| Vulnerable Population (BOC)                | Rivers & Streams (WAT)          | Recreational Facilities (NF) |
| Prime Farmlands (EOD)                      | Impaired 303D Waterways (WAT)   | Managed Lands (NF)           |
| Critical Habitats (ECO)                    | Underground Storage Tanks (HAZ) | Cemeteries (NF)              |
| Rare, Threatened, Endangered Species (ECO) | RORA Sites (HAZ)                | Trails (NF)                  |
| Eco-Types (ECO)                            | NPDES Facilities (HAZ)          | Railroad (NF)                |
| Historical Sites (GIL)                     | Closed Landfills (HAZ)          | Pipelines (NF)               |
| Wetlands (WAT)                             | Active Landfills (HAZ)          | Religious Facilities (NF)    |
| Lakes & Ponds (WAT)                        | Superfund Sites (HAZ)           | Hospitals (NF)               |
| Floodplains (WAT)                          | Brownfields (HAZ)               | Education Facilities (NF)    |
| Coastal Flood Zone                         | Wells (MN)                      | COLLEGE & UNIVERSITY         |
| FLOODWAY                                   | Sand & Gravel Operators (MN)    | PRIVATE SCHOOL               |
| 100YR Floodplain                           | Metals & Mineral Resources (MN) | PUBLIC SCHOOL                |
| 500YR Floodplain                           |                                 | Airports (NF)                |



City of Houston, HPB, Texas Parks & Wildlife, Esri, HERE, Garmin, INCREMENT P, USGS, METI/NASA, EPA, USDA

## Summary

Name	Count	Area(acres)	Length(mi)
Airports (INF)	0	N/A	N/A
Education Facilities (INF)	2	N/A	N/A
Hospitals (INF)	0	N/A	N/A
Religious Facilities (INF)	0	N/A	N/A
Pipelines (INF)	3	N/A	1.83
Railroad (INF)	0	N/A	0
Trails (INF)	4	N/A	1.18
Cemeteries (INF)	0	0	N/A
Managed Lands (INF)	0	0	N/A
Recreational Facilities (INF)	0	0	N/A
Mines & Mineral Resources (MIN)	0	N/A	N/A
Sand & Gravel Operations (MIN)	0	N/A	N/A
Wells (MIN)	1	N/A	N/A
Brownfields (HAZ)	0	N/A	N/A
Superfund Sites (HAZ)	0	N/A	N/A
Active Landfills (HAZ)	0	N/A	N/A
Closed Landfills (HAZ)	0	N/A	N/A
NPDES Facilities (HAZ)	6	N/A	N/A
RCRA Sites (HAZ)	0	N/A	N/A
Underground Storage Tanks (HAZ)	2	N/A	N/A
Impaired 303D Waterways (WAT)	0	N/A	0
Rivers & Streams (WAT)	0	N/A	0
Floodplains (WAT)	0	0	N/A
Lakes & Ponds (WAT)	0	0	N/A
Wetlands (WAT)	2	2.35	N/A
Historical Sites (CUL)	0	0	N/A
Eco-Types (ECO)	0	0	N/A
Rare, Threatened, Endangered Species (ECO)	2	407.44	N/A
Critical Habitats (ECO)	0	0	N/A
Prime Farmlands (ECO)	1	276.31	N/A
Vulnerable Population (SOC)	6	407.44	N/A

## Education Facilities (INF)

#	Name	School Type	Address	City	State
1	EDNA MAE FIELDER EL	PUBLIC SCHOOL	2100 GREENWAY VILLAGE DR	KATY	TX
2	CINCO RANCH MONTESSORI	PRIVATE SCHOOL	2530 S PEEK RD	KATY	TX

#	ZIP	County	Count
1	77494	FORT BEND	1
2	77450	FORT BEND	1

## Pipelines (INF)

#	Operator	System Name	Diameter	Commodity	System Type	County	Length(mi)
1	GULF SOUTH PIPELINE COMPANY, LP	129	30	NATURAL GAS	Gas Transmission	FORT BEND	0.66
2	ENTERPRISE CRUDE PIPELINE LLC	TEPPCO SOUTH TEXAS CRUDE LINES	10.75	CRUDE OIL	Crude Transmission	FORT BEND	0.59
3	COPANO NGL SERVICES LLC	SHERIDAN-HOUSTON	6.63	HIGHLY VOLATILE LIQUID (HVL)	Highly Volatile Liquids (Propa)	FORT BEND	0.58

## Trails (INF)

#	Sponsor	Location	Local Name	Bikeway Type	Length(mi)
1	Harris County	CINCO RANCH BLVD	<i>No Data</i>	Existing Shared Use Path/Trail	0.51
2	Harris County	BAY HILL BLVD	<i>No Data</i>	Existing Shared Use Path/Trail	0.50
3	Harris County	S PEEK RD	<i>No Data</i>	Existing Shared Use Path/Trail	0.17

## Wells (MIN)

#	Unique ID	Well Description	Count
1	1031122	Dry Hole	1

## NPDES Facilities (HAZ)

#	Registry ID	Primary Name	Address	City	County
1	110010921574	HARRIS-FT.BEND CO MUD 5 WWTP	1730 OCOTILLO CT	FORT BEND COUNTY	FORT BEND
2	110070527061	KATY PARKWAY MARKET PLACE PHASE 1	1420 W GRAND PKWY S	KATY	<i>No Data</i>
3	110070544218	CLAY 99 BUILDING 5 - PHASE 1	3900 S PEEK RD	KATY	<i>No Data</i>

#	ZIP	Facility URL	Count
1	77056	<a href="https://ofmpub.epa.gov/frs_public2/fii_query_detail_disp_program_facility?p_registry_id=110010921574">https://ofmpub.epa.gov/frs_public2/fii_query_detail_disp_program_facility?p_registry_id=110010921574</a>	2
2	77494	<a href="https://ofmpub.epa.gov/frs_public2/fii_query_detail_disp_program_facility?p_registry_id=110070527061">https://ofmpub.epa.gov/frs_public2/fii_query_detail_disp_program_facility?p_registry_id=110070527061</a>	2
3	77450	<a href="https://ofmpub.epa.gov/frs_public2/fii_query_detail_disp_program_facility?p_registry_id=110070544218">https://ofmpub.epa.gov/frs_public2/fii_query_detail_disp_program_facility?p_registry_id=110070544218</a>	2

## Underground Storage Tanks (HAZ)

#	RN	Facility ID	UST Type	Facility Name	Address
1	RN101753234	70085	FULLY REGULATED	CINCO RANCH CHEVRON	23307 CINCO RANCH BLVD
2	RN102918927	72405	FULLY REGULATED	KROGER FUEL FACILITY 733	1550 W GRAND PKWY N

#	City	State	ZIP	County	Count
1	KATY	TX	77494	FORT BEND	1
2	KATY	TX	77493	HARRIS	1

## Wetlands (WAT)

#	Wetland Type	Acres	Area(acres)
1	Riverine	2.2361457322217544	1.24
2	Riverine	7.19348022012931	1.11

## Rare, Threatened, Endangered Species (ECO)

#	Name	TPWD Link	Area (Sq Miles)	Area(acres)
1	Fort Bend	<a href="https://tpwd.texas.gov/gis/rtest/ES_Reports.aspx?countyname=Fort+Bend">https://tpwd.texas.gov/gis/rtest/ES_Reports.aspx?countyname=Fort Bend</a>	885.11	403.03
2	Harris	<a href="https://tpwd.texas.gov/gis/rtest/ES_Reports.aspx?countyname=Harris">https://tpwd.texas.gov/gis/rtest/ES_Reports.aspx?countyname=Harris</a>	1777.15	4.41

## Prime Farmlands (ECO)

#	Area Name	Farm Class	Area(acres)
1	Fort Bend County, Texas	All areas are prime farmland	276.31

## Vulnerable Population (SOC)

#	Block Group	Area (Sq Miles)	County	Total Household Population	Total Population
1	481576730013	0.43	Fort Bend	2542	2542
2	481576731012	2.61	Fort Bend	10448	10448
3	481576730012	0.67	Fort Bend	2823	2823
4	481576731021	2.37	Fort Bend	10451	10451
5	482014551021	0.28	Harris	1315	1315
6	481576730011	0.96	Fort Bend	2779	2779

#	Households	Population in Poverty	Non-Hispanic Minorities	Hispanic Minorities	Limited English Proficiency
1	746	No Data	323	144	No Data
2	3087	57	2788	2554	408
3	1012	169	557	480	52
4	3864	321	3281	2198	248
5	432	18	126	61	32
6	945	96	784	316	108

#	Disable Family	Elderly	Car-less	Single Female Householder	Vulnerable Index	Area(acres)
1	179	<i>No Data</i>	<i>No Data</i>	<i>No Data</i>	0.1	177.18
2	345	64	<i>No Data</i>	240	2.7	166.18
3	108	135	13	32	4.6	31.88
4	641	822	110	389	20.3	27.31
5	68	43	<i>No Data</i>	<i>No Data</i>	0.4	4.41
6	197	380	44	96	35.6	0.47