

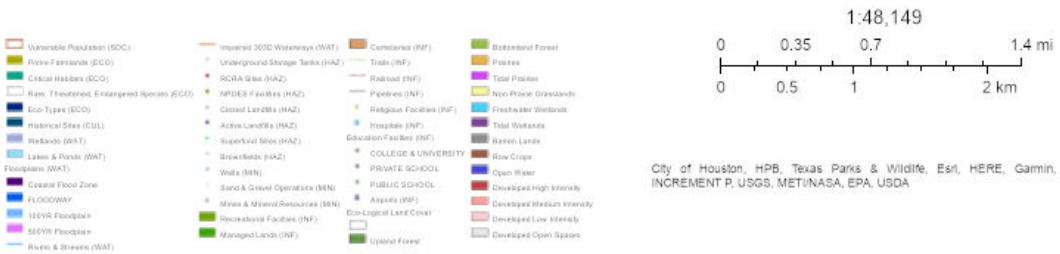
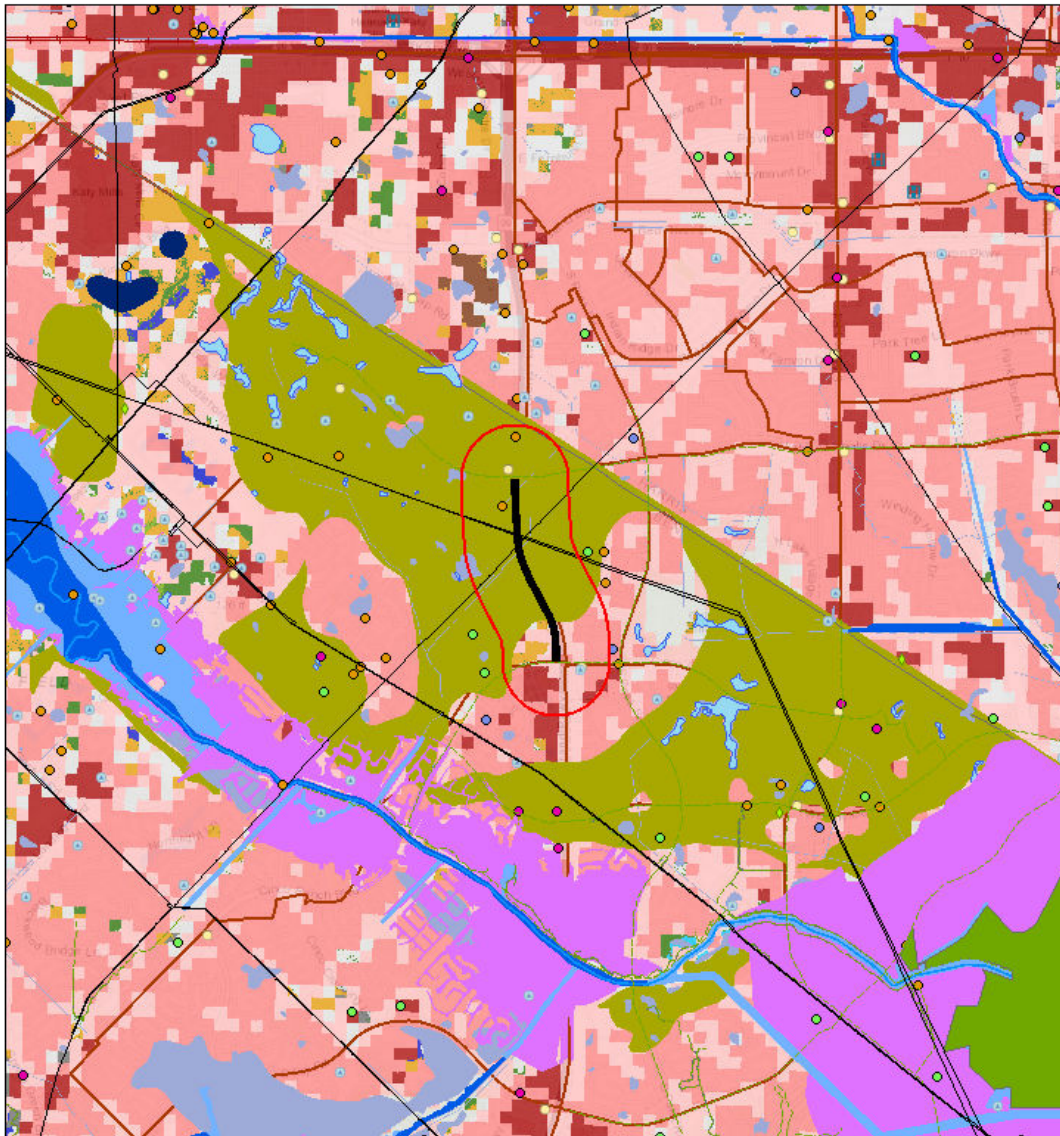
# Red Flag Report

## Area of Interest (AOI) Information

Area : 408.73 acres

Feb 12 2024 15:3:4 Central Standard Time

### Letter ANSI A Portrait



## Summary

Name	Count	Area(acres)	Length(mi)
Airports (INF)	0	N/A	N/A
Education Facilities (INF)	0	N/A	N/A
Hospitals (INF)	0	N/A	N/A
Religious Facilities (INF)	0	N/A	N/A
Pipelines (INF)	3	N/A	1.78
Railroad (INF)	0	N/A	0
Trails (INF)	3	N/A	1.01
Cemeteries (INF)	0	0	N/A
Managed Lands (INF)	0	0	N/A
Recreational Facilities (INF)	0	0	N/A
Mines & Mineral Resources (MIN)	0	N/A	N/A
Sand & Gravel Operations (MIN)	0	N/A	N/A
Wells (MIN)	1	N/A	N/A
Brownfields (HAZ)	0	N/A	N/A
Superfund Sites (HAZ)	0	N/A	N/A
Active Landfills (HAZ)	0	N/A	N/A
Closed Landfills (HAZ)	0	N/A	N/A
NPDES Facilities (HAZ)	4	N/A	N/A
RCRA Sites (HAZ)	0	N/A	N/A
Underground Storage Tanks (HAZ)	2	N/A	N/A
Impaired 303D Waterways (WAT)	0	N/A	0
Rivers & Streams (WAT)	0	N/A	0
Floodplains (WAT)	0	0	N/A
Lakes & Ponds (WAT)	0	0	N/A
Wetlands (WAT)	4	6.29	N/A
Historical Sites (CUL)	0	0	N/A
Eco-Types (ECO)	0	0	N/A
Rare, Threatened, Endangered Species (ECO)	2	408.73	N/A
Critical Habitats (ECO)	0	0	N/A
Prime Farmlands (ECO)	1	292.95	N/A
Vulnerable Population (SOC)	5	408.73	N/A

## Pipelines (INF)

#	Operator	System Name	Diameter	Commodity	System Type	County	Length(mi)
1	GULF SOUTH PIPELINE COMPANY, LP	129	30	NATURAL GAS	Gas Transmission	FORT BEND	0.63
2	ENTERPRISE CRUDE PIPELINE LLC	TEPPCO SOUTH TEXAS CRUDE LINES	10.75	CRUDE OIL	Crude Transmission	FORT BEND	0.58
3	COPANO NGL SERVICES LLC	SHERIDAN-HOUSTON	6.63	HIGHLY VOLATILE LIQUID (HVL)	Highly Volatile Liquids (Propa)	FORT BEND	0.57

## Trails (INF)

#	Sponsor	Location	Local Name	Bikeway Type	Length(mi)
1	Harris County	CINCO RANCH BLVD	No Data	Existing Shared Use Path/Trail	0.51
2	Harris County	BAY HILL BLVD	No Data	Existing Shared Use Path/Trail	0.50

## Wells (MIN)

#	Unique ID	Well Description	Count
1	1031122	Dry Hole	1

## NPDES Facilities (HAZ)

#	Registry ID	Primary Name	Address	City	County
1	110010921574	HARRIS-FT.BEND CO MUD 5 WWTP	1730 OCOTILLO CT	FORT BEND COUNTY	FORT BEND
2	110070527061	KATY PARKWAY MARKET PLACE PHASE 1	1420 W GRAND PKWY S	KATY	No Data

#	ZIP	Facility URL	Count
1	77056	<a href="https://ofmpub.epa.gov/frs_public2/fii_query_detail_disp_program_facility?p_registry_id=110010921574">https://ofmpub.epa.gov/frs_public2/fii_query_detail_disp_program_facility?p_registry_id=110010921574</a>	2
2	77494	<a href="https://ofmpub.epa.gov/frs_public2/fii_query_detail_disp_program_facility?p_registry_id=110070527061">https://ofmpub.epa.gov/frs_public2/fii_query_detail_disp_program_facility?p_registry_id=110070527061</a>	2

## Underground Storage Tanks (HAZ)

#	RN	Facility ID	UST Type	Facility Name	Address
1	RN101753234	70085	FULLY REGULATED	CINCO RANCH CHEVRON	23307 CINCO RANCH BLVD
2	RN102918927	72405	FULLY REGULATED	KROGER FUEL FACILITY 733	1550 W GRAND PKWY N

#	City	State	ZIP	County	Count
1	KATY	TX	77494	FORT BEND	1
2	KATY	TX	77493	HARRIS	1

## Wetlands (WAT)

#	Wetland Type	Acres	Area(acres)
1	Freshwater Emergent Wetland	6.4095442779153045	3.03
2	Riverine	2.2361457322217544	1.49
3	Riverine	7.19348022012931	1.26
4	Freshwater Emergent Wetland	2.477606544237494	0.51

### Rare, Threatened, Endangered Species (ECO)

#	Name	TPWD Link	Area (Sq Miles)	Area(acres)
1	Fort Bend	<a href="https://tpwd.texas.gov/gis/rtest/ES_Reports.aspx?countyname=Fort+Bend">https://tpwd.texas.gov/gis/rtest/ES_Reports.aspx?countyname=Fort Bend</a>	885.11	408.17
2	Harris	<a href="https://tpwd.texas.gov/gis/rtest/ES_Reports.aspx?countyname=Harris">https://tpwd.texas.gov/gis/rtest/ES_Reports.aspx?countyname=Harris</a>	1777.15	0.56

### Prime Farmlands (ECO)

#	Area Name	Farm Class	Area(acres)
1	Fort Bend County, Texas	All areas are prime farmland	292.95

### Vulnerable Population (SOC)

#	Block Group	Area (Sq Miles)	County	Total Household Population	Total Population
1	481576731012	2.61	Fort Bend	10448	10448
2	481576730013	0.43	Fort Bend	2542	2542
3	481576731021	2.37	Fort Bend	10451	10451
4	481576730012	0.67	Fort Bend	2823	2823
5	482014551021	0.28	Harris	1315	1315

#	Households	Population in Poverty	Non-Hispanic Minorities	Hispanic Minorities	Limited English Proficiency
1	3087	57	2788	2554	408
2	746	No Data	323	144	No Data
3	3864	321	3281	2198	248
4	1012	169	557	480	52
5	432	18	126	61	32

#	Disable Family	Elderly	Car-less	Single Female Householder	Vulnerable Index	Area(acres)
1	345	64	No Data	240	2.7	208.75
2	179	No Data	No Data	No Data	0.1	140.63
3	641	822	110	389	20.3	36.57
4	108	135	13	32	4.6	22.23
5	68	43	No Data	No Data	0.4	0.56