

**CITY OF MONT BELVIEU, TEXAS  
2018–2028 CAPITAL IMPROVEMENTS PLAN**

Project No.	Project Name	Prior Funding	Projected Allocations by Fiscal Year										2018–2028 TOTAL
			18/19	19/20	20/21	21/22	22/23	23/24	24/25	25/26	26/27	27/28	
<b>Facilities</b>													
FC-027	City Hall Renovation - City Hall	-	950,000	5,900,000	5,000,000	2,000,000	-	-	-	-	-	-	13,850,000
TBD	City Hall Renovation - Police Station	-	-	-	-	-	-	1,905,000	-	-	-	-	1,905,000
TBD	Fire Substation 2	-	-	398,000	2,716,000	-	-	-	-	-	-	-	3,114,000
<b>Transportation</b>													
RD-020	Langston Blvd. from Eagle Dr. to Grand Parkway	-	2,250,000	6,000,000	-	-	-	-	-	-	-	-	8,250,000
RD-021	Perry Ave. from FM 1409 to FM 565	-	833,750	6,600,000	-	-	-	-	-	-	-	-	7,433,750
RD-022	Lakes of Champions Blvd. from Cotton Bayou to Perry Ave.	-	300,000	-	-	-	-	-	-	5,470,800	-	-	5,770,800
RD-017	Street Resurfacing - Phase 4	-	3,565,000	-	-	-	-	-	-	-	-	-	3,565,000
RD-024	Street Resurfacing - Phase 5	-	650,000	4,000,000	-	-	-	4,416,323	-	-	-	-	9,066,323
RD-006	Grand Parkway Gateway Enhancements	-	100,000	-	157,000	531,000	-	1,657,000	-	-	-	-	2,445,000
TBD	Interstate 10 Gateway Enhancements	-	-	128,000	-	-	-	2,209,000	-	-	-	-	2,337,000
TBD	Langston Blvd. from Eagle Dr. to Grand Parkway - Complete Boulevard, Landscaping, Hardscaping, Illumination	-	-	-	-	-	-	-	-	-	-	4,206,000	4,206,000
TBD	Perry Ave. from WWTP to FM 1409	-	-	149,000	1,229,000	-	-	-	-	-	-	-	1,378,000
TBD	FM 565 Reconstruction	-	-	-	-	-	-	-	-	-	18,043,000	-	18,043,000
TBD	Eagle Dr. from FM 565 to SH 146	-	-	-	-	-	-	-	-	27,368,000	-	-	27,368,000
<b>Parks and Recreation</b>													
TBD	Hackberry Park	-	-	-	1,000,000	1,000,000	-	1,000,000	1,000,000	2,000,000	2,000,000	1,000,000	9,000,000
<b>Drainage</b>													
DR-010	Drainage Master Plan	-	350,000	-	-	-	-	-	-	-	-	-	350,000
TBD	Cherry Point Drainage – Conveyance Solution	-	-	-	625,000	5,307,000	-	-	-	-	-	-	5,932,000
TBD	Cotton Bayou Diversion Channel	-	-	-	-	-	-	-	-	-	-	13,272,700	13,272,700
<b>Water</b>													
WA-007	12" Waterline from Magnolia Landing to Langston Blvd.	-	1,500,000	1,250,000	-	-	-	-	-	-	-	-	2,750,000
TBD	Waterline Hatcherville	-	-	-	-	-	-	-	4,958,487	-	-	-	4,958,487
TBD	12" Waterline along North SH 146	-	-	-	-	107,000	1,516,000	-	-	-	-	-	1,623,000
TBD	Perry Well Rehabilitation	-	100,000	-	-	-	-	-	-	-	-	-	100,000
<b>Wastewater</b>													
SS-002	Wastewater Treatment Plant (WWTP) Reconstruction	-	1,000,000	3,600,000	6,500,000	6,500,000	-	-	1,500,000	9,500,000	9,000,000	-	37,600,000
TBD	Lift Station Abandonment	-	-	3,224,000	-	-	-	-	-	-	-	-	3,224,000
TBD	Southern East-West Deep Sewer	-	-	-	-	-	-	7,874,000	-	-	-	-	7,874,000
<b>Miscellaneous</b>													
N/A	Salaries	-	1,131,593	1,188,173	1,247,581	1,309,960	1,375,458	1,444,231	1,516,443	1,592,265	1,671,878	1,755,472	14,233,055
<b>TOTAL</b>		<b>-</b>	<b>12,730,343</b>	<b>32,437,173</b>	<b>18,474,581</b>	<b>16,754,960</b>	<b>2,891,458</b>	<b>20,505,554</b>	<b>8,974,930</b>	<b>45,931,065</b>	<b>30,714,878</b>	<b>20,234,172</b>	<b>209,649,115</b>

**Assumptions**

- (1) Cost estimates provided by Jones and Carter include 10% contingency.
- (2) Design costs assumed to be 15% of construction costs unless otherwise noted.
- (3) 2% inflation applied to land acquisition, design, and construction costs unless otherwise noted. Inflation not applied to 18/19 projects.

**CITY OF MONT BELVIEU, TEXAS  
2018–2028 CAPITAL IMPROVEMENTS PLAN**

Funding Sources	Prior Funding	Projected Allocations by Fiscal Year										2018–2028 TOTAL	
		18/19	19/20	20/21	21/22	22/23	23/24	24/25	25/26	26/27	27/28		
Bond - Series 2014	-	400,000	-	-	-	-	-	-	-	-	-	-	400,000
Bond - Series 2015	-	2,231,593	100,000	-	-	-	-	-	-	-	-	-	2,331,593
Bond - Series 2016	-	3,950,000	149,000	-	-	-	-	-	-	-	-	-	4,099,000
Bond - Series 2017A	-	2,648,750	398,000	3,945,000	-	-	-	-	-	-	-	-	6,991,750
Bond - Series 2019	-	3,500,000	19,538,173	5,697,581	-	-	-	-	-	-	-	-	28,735,754
Bond - Series 2020	-	-	9,028,000	6,250,000	6,500,000	-	-	-	-	-	-	-	21,778,000
Bond - Series 2021	-	-	-	1,957,000	2,009,960	-	-	-	-	-	-	-	3,966,960
Bond - Series 2022	-	-	-	-	2,831,000	1,375,458	-	-	-	-	-	-	4,206,458
Bond - Series 2024	-	-	-	-	-	-	12,631,554	3,016,443	500,000	-	-	-	16,147,997
Bond - Series 2025	-	-	-	-	-	-	-	5,958,487	10,592,265	9,000,000	-	-	25,550,752
Bond - Series 2026	-	-	-	-	-	-	-	-	7,470,800	1,671,878	-	-	9,142,678
Bond - Series 2027	-	-	-	-	-	-	-	-	-	2,000,000	1,755,472	-	3,755,472
Bond - Series 2028	-	-	-	-	-	-	-	-	-	-	5,206,000	-	5,206,000
Grant	-	-	2,418,000	468,750	3,980,250	-	5,905,500	-	21,894,400	14,434,400	9,954,525	-	59,055,825
Impact fees	-	-	-	-	107,000	1,516,000	-	-	-	-	-	-	1,623,000
Unallocated funds	-	-	806,000	156,250	1,326,750	-	1,968,500	-	5,473,600	3,608,600	3,318,175	-	16,657,875
<b>TOTAL</b>	-	<b>12,730,343</b>	<b>32,437,173</b>	<b>18,474,581</b>	<b>16,754,960</b>	<b>2,891,458</b>	<b>20,505,554</b>	<b>8,974,930</b>	<b>45,931,065</b>	<b>30,714,878</b>	<b>20,234,172</b>	-	<b>209,649,115</b>

**CITY OF MONT BELVIEU, TEXAS  
2018-2028 CAPITAL IMPROVEMENTS PLAN**

<b>Project Name</b>	City Hall Renovation - City Hall
<b>Project Category</b>	City Funded Facilities
<b>Project Number</b>	FC-027
<b>Project Description</b>	Design and construction of City Hall expansion building. Includes remodeling of existing old senior center to convert into new council chambers and courts.
<b>Project Justification</b>	City population growth requires additional staff. Existing facility is not large enough to accommodate required staff for the expected population growth of 30,000 people by 2035.



Notes:  
 (1) Construction cost from city staff.  
 (2) Design costs assumed to be 15% of construction cost.  
 (3) No inflation applied to active project.

Project Costs	Prior Budget	Projected Allocations by Fiscal Year										TOTAL
		18/19	19/20	20/21	21/22	22/23	23/24	24/25	25/26	26/27	27/28	
Land Acquisition												-
Design and Surveying		950,000	900,000									1,850,000
Construction			5,000,000	5,000,000	2,000,000							12,000,000
Contingency and Inflation												-
<b>TOTAL</b>	-	950,000	5,900,000	5,000,000	2,000,000	-	-	-	-	-	-	13,850,000

Funding Sources	Prior Funding	Projected Allocations by Fiscal Year										TOTAL
		18/19	19/20	20/21	21/22	22/23	23/24	24/25	25/26	26/27	27/28	
Bond - Series 2014		50,000										50,000
Bond - Series 2015		900,000	100,000									1,000,000
Bond - Series 2016												-
Bond - Series 2017A												-
Bond - Series 2019			5,800,000	4,200,000								10,000,000
Bond - Series 2020												-
Bond - Series 2021				800,000	700,000							1,500,000
Bond - Series 2022					1,300,000							1,300,000
Bond - Series 2024												-
Bond - Series 2025												-
Bond - Series 2026												-
Bond - Series 2027												-
Bond - Series 2028												-
Grant												-
Impact fees												-
Unallocated funds												-
<b>TOTAL</b>	-	950,000	5,900,000	5,000,000	2,000,000	-	-	-	-	-	-	13,850,000

**CITY OF MONT BELVIEU, TEXAS  
2018-2028 CAPITAL IMPROVEMENTS PLAN**

<b>Project Name</b>	City Hall Renovation - Police Station
<b>Project Category</b>	City Funded Facilities
<b>Project Number</b>	TBD
<b>Project Description</b>	Interior updates to the Mont Belvieu Police Department facility located within the City Hall Complex.
<b>Project Justification</b>	Aging facilities at the Police Department require modernization in order to effectively serve the community.



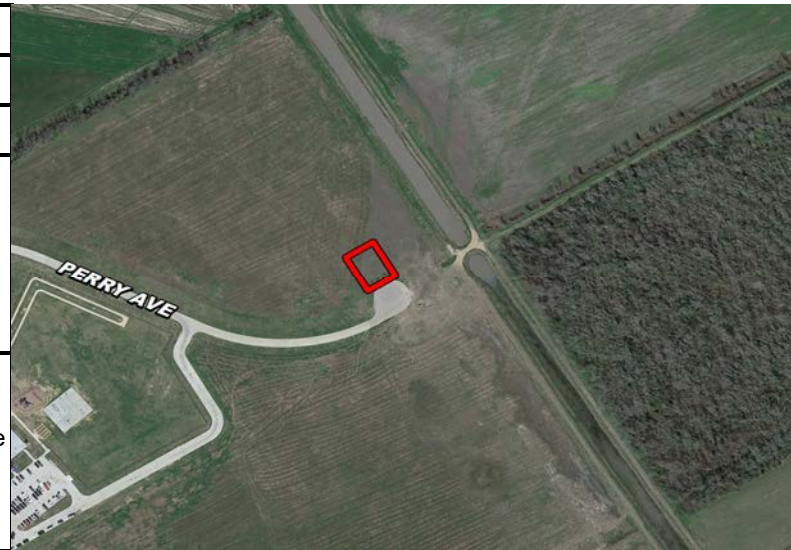
Notes:  
(1) Construction cost from city staff.

Project Costs	Prior Budget	Projected Allocations by Fiscal Year										TOTAL	
		18/19	19/20	20/21	21/22	22/23	23/24	24/25	25/26	26/27	27/28		
Land Acquisition													-
Design and Surveying							225,000						225,000
Construction							1,500,000						1,500,000
Contingency and Inflation							180,000						180,000
<b>TOTAL</b>	-	-	-	-	-	-	1,905,000	-	-	-	-	-	1,905,000

Funding Sources	Prior Funding	Projected Allocations by Fiscal Year										TOTAL	
		18/19	19/20	20/21	21/22	22/23	23/24	24/25	25/26	26/27	27/28		
Bond - Series 2014													-
Bond - Series 2015													-
Bond - Series 2016													-
Bond - Series 2017A													-
Bond - Series 2019													-
Bond - Series 2020													-
Bond - Series 2021													-
Bond - Series 2022													-
Bond - Series 2024							1,905,000						1,905,000
Bond - Series 2025													-
Bond - Series 2026													-
Bond - Series 2027													-
Bond - Series 2028													-
Grant													-
Impact fees													-
Unallocated funds													-
<b>TOTAL</b>	-	-	-	-	-	-	1,905,000	-	-	-	-	-	1,905,000

**CITY OF MONT BELVIEU, TEXAS  
2018-2028 CAPITAL IMPROVEMENTS PLAN**

<b>Project Name</b>	Fire Substation 2
<b>Project Category</b>	City Funded Facilities
<b>Project Number</b>	TBD
<b>Project Description</b>	Construction of new fire station facility located at the intersection of FM 1409 and Perry Ave.
<b>Project Justification</b>	Area population growth requires additional fire service in order to effectively serve the community.



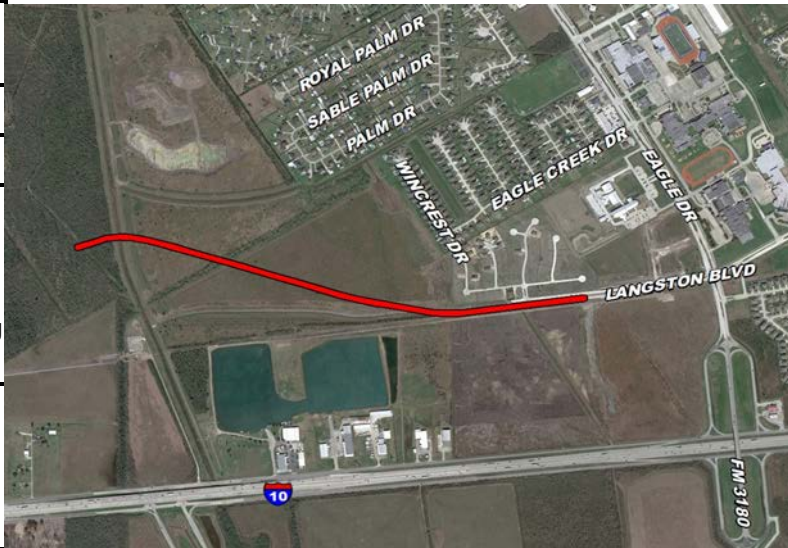
Notes:  
(1) Construction cost from city staff.

Project Costs	Prior Budget	Projected Allocations by Fiscal Year										TOTAL
		18/19	19/20	20/21	21/22	22/23	23/24	24/25	25/26	26/27	27/28	
Land Acquisition												-
Design and Surveying			390,000									390,000
Construction				2,610,000								2,610,000
Contingency and Inflation			8,000	106,000								114,000
<b>TOTAL</b>	-	-	398,000	2,716,000	-	-	-	-	-	-	-	3,114,000

Funding Sources	Prior Funding	Projected Allocations by Fiscal Year										TOTAL
		18/19	19/20	20/21	21/22	22/23	23/24	24/25	25/26	26/27	27/28	
Bond - Series 2014												-
Bond - Series 2015												-
Bond - Series 2016												-
Bond - Series 2017A			398,000	2,716,000								3,114,000
Bond - Series 2019												-
Bond - Series 2020												-
Bond - Series 2021												-
Bond - Series 2022												-
Bond - Series 2024												-
Bond - Series 2025									-			-
Bond - Series 2026												-
Bond - Series 2027												-
Bond - Series 2028												-
Grant												-
Impact fees												-
Unallocated funds												-
<b>TOTAL</b>	-	-	398,000	2,716,000	-	-	-	-	-	-	-	3,114,000

**CITY OF MONT BELVIEU, TEXAS  
2018-2028 CAPITAL IMPROVEMENTS PLAN**

<b>Project Name</b>	Langston Blvd. from Eagle Dr. to Grand Parkway
<b>Project Category</b>	Transportation
<b>Project Number</b>	RD-020
<b>Project Description</b>	Extend Langston Boulevard 0.8 miles to proposed Grand Parkway intersection. Construct as a two-lane, undivided 24-foot concrete roadway with curbs and storm sewer. Design to allow for future expansion to four-lane divided boulevard. Includes cost of mitigating impacts to wetlands.
<b>Project Justification</b>	Roadway extension is needed to serve proposed Grand Parkway overpass and better connect the city to the regional transportation system. New east-west thoroughfare will increase transportation options for the community.



**Notes:**

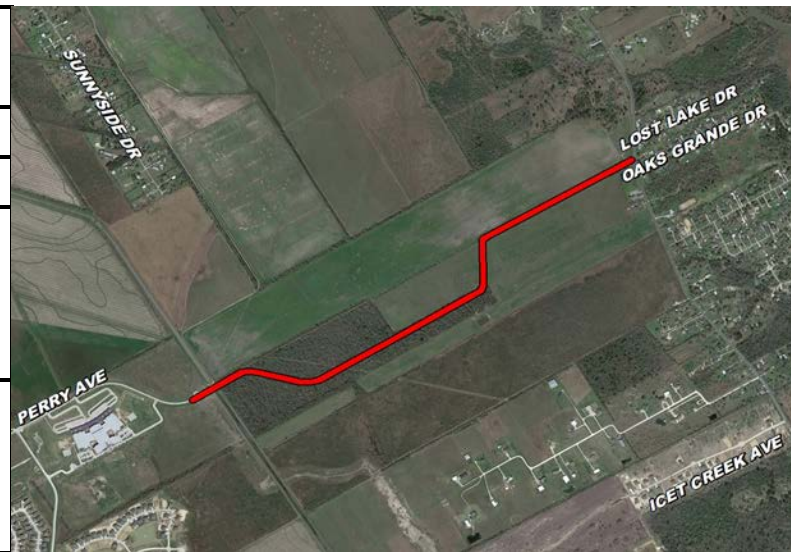
- (1) At the time of this CIP, design work was under contract.
- (2) Cobb Findley provided cost estimates for wetland mitigation.
- (3) Construction cost from estimate calculated by Jones and Carter.
- (4) No inflation applied to active project.

Project Costs	Prior Budget	Projected Allocations by Fiscal Year										TOTAL	
		18/19	19/20	20/21	21/22	22/23	23/24	24/25	25/26	26/27	27/28		
Land Acquisition/Wetland Mitigation		600,000											600,000
Design and Surveying		650,000											650,000
Construction		1,000,000	6,000,000										7,000,000
Contingency and Inflation													-
<b>TOTAL</b>	-	2,250,000	6,000,000	-	-	-	-	-	-	-	-	-	8,250,000

Funding Sources	Prior Funding	Projected Allocations by Fiscal Year										TOTAL	
		18/19	19/20	20/21	21/22	22/23	23/24	24/25	25/26	26/27	27/28		
Bond - Series 2014													-
Bond - Series 2015													-
Bond - Series 2016		385,000											385,000
Bond - Series 2017A		865,000											865,000
Bond - Series 2019		1,000,000	3,000,000										4,000,000
Bond - Series 2020			3,000,000										3,000,000
Bond - Series 2021													-
Bond - Series 2022													-
Bond - Series 2024													-
Bond - Series 2025													-
Bond - Series 2026													-
Bond - Series 2027													-
Bond - Series 2028													-
Grant													-
Impact fees													-
Unallocated funds													-
<b>TOTAL</b>	-	2,250,000	6,000,000	-	-	-	-	-	-	-	-	-	8,250,000

**CITY OF MONT BELVIEU, TEXAS  
2018-2028 CAPITAL IMPROVEMENTS PLAN**

<b>Project Name</b>	Perry Ave. from FM 1409 to FM 565
<b>Project Category</b>	Transportation
<b>Project Number</b>	RD-021
<b>Project Description</b>	Extend Perry Avenue 1.28 miles to existing intersection of FM 565 and Oaks Grande Dr. Phase 1 includes storm sewer trunk main and paving for southern two lanes of boulevard section. Phase 2 includes buildout of remaining two boulevard lanes.
<b>Project Justification</b>	Extension to FM 565 will create a new east-west thoroughfare, improving mobility for community members.



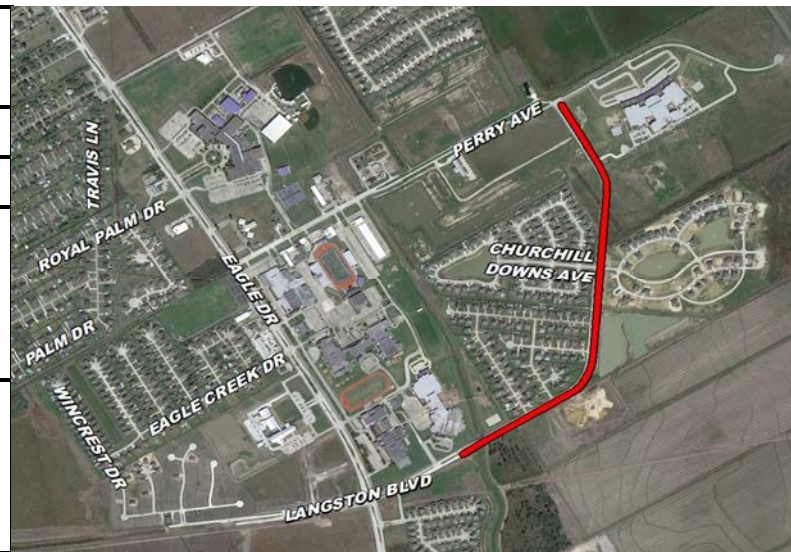
Notes:  
 (1) Construction cost from ARKK Engineers.  
 (2) No inflation applied to active project.

Project Costs	Prior Budget	Projected Allocations by Fiscal Year										TOTAL
		18/19	19/20	20/21	21/22	22/23	23/24	24/25	25/26	26/27	27/28	
Land Acquisition												-
Design and Surveying		833,750										833,750
Construction			6,600,000									6,600,000
Contingency and Inflation												-
<b>TOTAL</b>	-	833,750	6,600,000	-	-	-	-	-	-	-	-	7,433,750

Funding Sources	Prior Funding	Projected Allocations by Fiscal Year										TOTAL
		18/19	19/20	20/21	21/22	22/23	23/24	24/25	25/26	26/27	27/28	
Bond - Series 2014												-
Bond - Series 2015												-
Bond - Series 2016												-
Bond - Series 2017A		833,750										833,750
Bond - Series 2019			4,700,000									4,700,000
Bond - Series 2020			1,900,000									1,900,000
Bond - Series 2021												-
Bond - Series 2022												-
Bond - Series 2024												-
Bond - Series 2025												-
Bond - Series 2026												-
Bond - Series 2027												-
Bond - Series 2028												-
Grant												-
Impact fees												-
Unallocated funds												-
<b>TOTAL</b>	-	833,750	6,600,000	-	-	-	-	-	-	-	-	7,433,750

**CITY OF MONT BELVIEU, TEXAS  
2018-2028 CAPITAL IMPROVEMENTS PLAN**

<b>Project Name</b>	Lakes of Champions Blvd. from Cotton Bayou to Perry Ave.
<b>Project Category</b>	Transportation
<b>Project Number</b>	RD-022
<b>Project Description</b>	Expand 0.93 mile of existing two-lane Lakes of Champions Boulevard to four-lane configuration with landscaped median. Includes paving, storm sewer, landscape, hardscape, and illumination.
<b>Project Justification</b>	Increase capacity and efficiency of Lakes of Champions to accommodate development east of Eagle Drive and better serve the needs of BHISD.



Notes:  
(1) Construction cost from city staff.

Project Costs	Prior Budget	Projected Allocations by Fiscal Year										TOTAL	
		18/19	19/20	20/21	21/22	22/23	23/24	24/25	25/26	26/27	27/28		
Land Acquisition													-
Design and Surveying		300,000								301,800			601,800
Construction										4,460,000			4,460,000
Contingency and Inflation										709,000			709,000
<b>TOTAL</b>	-	300,000	-	-	-	-	-	-	-	5,470,800	-	-	5,770,800

Funding Sources	Prior Funding	Projected Allocations by Fiscal Year										TOTAL	
		18/19	19/20	20/21	21/22	22/23	23/24	24/25	25/26	26/27	27/28		
Bond - Series 2014													-
Bond - Series 2015													-
Bond - Series 2016													-
Bond - Series 2017A		300,000											300,000
Bond - Series 2019													-
Bond - Series 2020													-
Bond - Series 2021													-
Bond - Series 2022													-
Bond - Series 2024													-
Bond - Series 2025													-
Bond - Series 2026										5,470,800			5,470,800
Bond - Series 2027													-
Bond - Series 2028													-
Grant													-
Impact fees													-
Unallocated funds													-
<b>TOTAL</b>	-	300,000	-	-	-	-	-	-	-	5,470,800	-	-	5,770,800



**CITY OF MONT BELVIEU, TEXAS  
2018-2028 CAPITAL IMPROVEMENTS PLAN**

<b>Project Name</b>	Street Resurfacing - Phase 4
<b>Project Category</b>	Transportation
<b>Project Number</b>	RD-017
<b>Project Description</b>	Resurfacing of asphalt and concrete streets within the community. Includes some drainage improvements. Streets include: Trinity Dr., Bridgette Ln., Kathleen Dr., Ronnie Dr., Travis Ln., and Krystine Dr.
<b>Project Justification</b>	Deteriorating concrete conditions necessitate resurfacing on city streets.



Notes:  
 (1) Construction cost from city staff.  
 (2) No inflation applied to active project.

Project Costs	Prior Budget	Projected Allocations by Fiscal Year										TOTAL	
		18/19	19/20	20/21	21/22	22/23	23/24	24/25	25/26	26/27	27/28		
Land Acquisition													-
Design and Surveying		465,000											465,000
Construction		3,100,000											3,100,000
Contingency and Inflation													-
<b>TOTAL</b>	-	3,565,000	-	-	-	-	-	-	-	-	-	-	3,565,000

Funding Sources	Prior Funding	Projected Allocations by Fiscal Year										TOTAL	
		18/19	19/20	20/21	21/22	22/23	23/24	24/25	25/26	26/27	27/28		
Bond - Series 2014													-
Bond - Series 2015													-
Bond - Series 2016		3,565,000											3,565,000
Bond - Series 2017A													-
Bond - Series 2019													-
Bond - Series 2020													-
Bond - Series 2021													-
Bond - Series 2022													-
Bond - Series 2024													-
Bond - Series 2025													-
Bond - Series 2026													-
Bond - Series 2027													-
Bond - Series 2028													-
Grant													-
Impact fees													-
Unallocated funds													-
<b>TOTAL</b>	-	3,565,000	-	-	-	-	-	-	-	-	-	-	3,565,000

**CITY OF MONT BELVIEU, TEXAS  
2018-2028 CAPITAL IMPROVEMENTS PLAN**

<b>Project Name</b>	Street Resurfacing - Phase 5
<b>Project Category</b>	Transportation
<b>Project Number</b>	RD-024
<b>Project Description</b>	Resurfacing of asphalt and concrete streets within the community. Includes some drainage, water, and sewer improvements. Streets include: Cherry Creek Dr., White Oak Ln., Cherry Point Rd., Royal Palm Dr., Sable Palm Dr., and Palm Dr.
<b>Project Justification</b>	Deteriorating concrete conditions necessitate resurfacing on city streets.



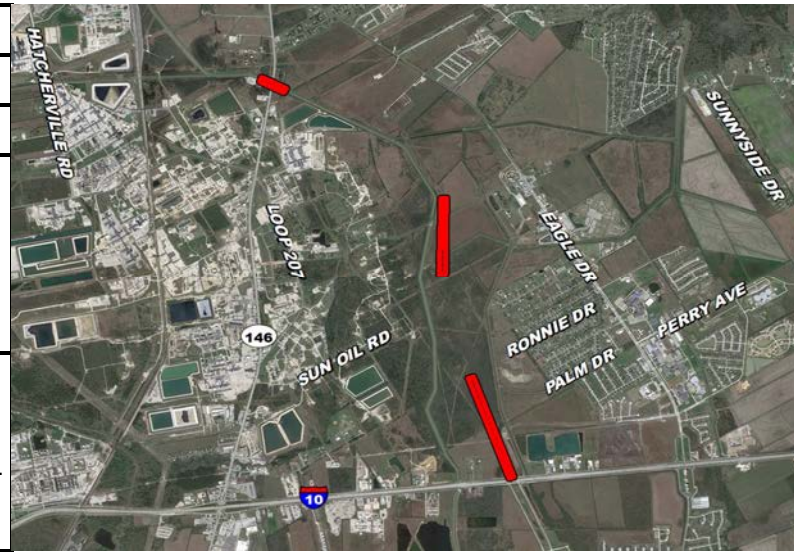
Notes:  
 (1) Construction cost from city staff.  
 (2) No inflation applied to active project.

Project Costs	Prior Budget	Projected Allocations by Fiscal Year										TOTAL	
		18/19	19/20	20/21	21/22	22/23	23/24	24/25	25/26	26/27	27/28		
Land Acquisition													-
Design and Surveying		650,000											650,000
Construction			4,000,000				4,000,000						8,000,000
Contingency and Inflation							416,323						416,323
<b>TOTAL</b>	-	650,000	4,000,000	-	-	-	4,416,323	-	-	-	-	-	9,066,323

Funding Sources	Prior Funding	Projected Allocations by Fiscal Year										TOTAL	
		18/19	19/20	20/21	21/22	22/23	23/24	24/25	25/26	26/27	27/28		
Bond - Series 2014													-
Bond - Series 2015													-
Bond - Series 2016													-
Bond - Series 2017A		650,000											650,000
Bond - Series 2019													-
Bond - Series 2020			4,000,000										4,000,000
Bond - Series 2021													-
Bond - Series 2022													-
Bond - Series 2024							4,416,323						4,416,323
Bond - Series 2025													-
Bond - Series 2026													-
Bond - Series 2027													-
Bond - Series 2028													-
Grant													-
Impact fees													-
Unallocated funds													-
<b>TOTAL</b>	-	650,000	4,000,000	-	-	-	4,416,323	-	-	-	-	-	9,066,323

**CITY OF MONT BELVIEU, TEXAS  
2018-2028 CAPITAL IMPROVEMENTS PLAN**

<b>Project Name</b>	Grand Parkway Gateway Enhancements
<b>Project Category</b>	Transportation
<b>Project Number</b>	RD-006
<b>Project Description</b>	Design and construction of monumentation and beautification at SH 146, FM 565, and Langston Boulevard exits along Grand Parkway.
<b>Project Justification</b>	Monumentation will welcome Mont Belvieu residents and visitors and help establish city brand and identity.



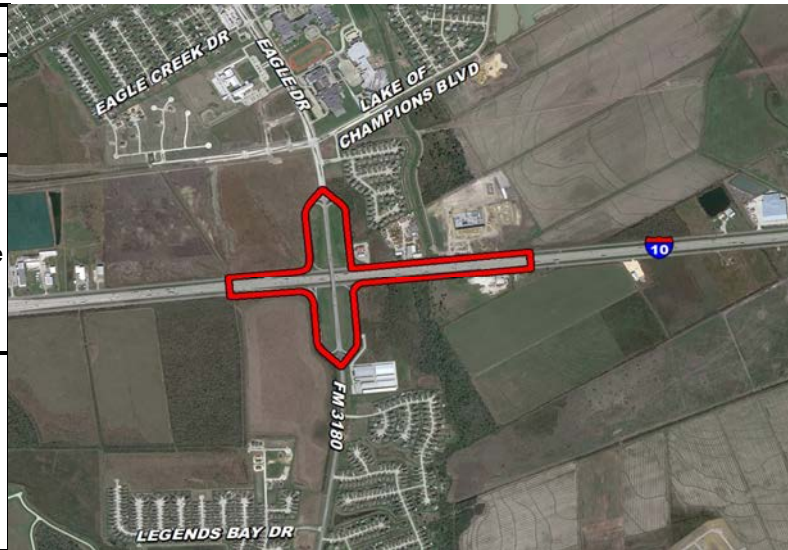
Notes:  
 (1) Design cost from city staff.  
 (2) Project scheduled to follow TxDOT construction.

Project Costs	Prior Budget	Projected Allocations by Fiscal Year										TOTAL	
		18/19	19/20	20/21	21/22	22/23	23/24	24/25	25/26	26/27	27/28		
Land Acquisition													-
Design and Surveying		100,000		150,000									250,000
Construction					500,000		1,500,000						2,000,000
Contingency and Inflation				7,000	31,000		157,000						195,000
<b>TOTAL</b>	-	100,000	-	157,000	531,000	-	1,657,000	-	-	-	-	-	2,445,000

Funding Sources	Prior Funding	Projected Allocations by Fiscal Year										TOTAL	
		18/19	19/20	20/21	21/22	22/23	23/24	24/25	25/26	26/27	27/28		
Bond - Series 2014													-
Bond - Series 2015		100,000											100,000
Bond - Series 2016													-
Bond - Series 2017A													-
Bond - Series 2019													-
Bond - Series 2020													-
Bond - Series 2021				157,000									157,000
Bond - Series 2022					531,000								531,000
Bond - Series 2024							1,657,000						1,657,000
Bond - Series 2025													-
Bond - Series 2026													-
Bond - Series 2027													-
Bond - Series 2028													-
Grant													-
Impact fees													-
Unallocated funds													-
<b>TOTAL</b>	-	100,000	-	157,000	531,000	-	1,657,000	-	-	-	-	-	2,445,000

**CITY OF MONT BELVIEU, TEXAS  
2018-2028 CAPITAL IMPROVEMENTS PLAN**

<b>Project Name</b>	Interstate 10 Gateway Enhancements
<b>Project Category</b>	Transportation
<b>Project Number</b>	TBD
<b>Project Description</b>	Design and construction of monumentation and beautification at Eagle Drive overpass along Interstate 10.
<b>Project Justification</b>	Monumentation will welcome Mont Belvieu residents and visitors and help establish city brand and identity.



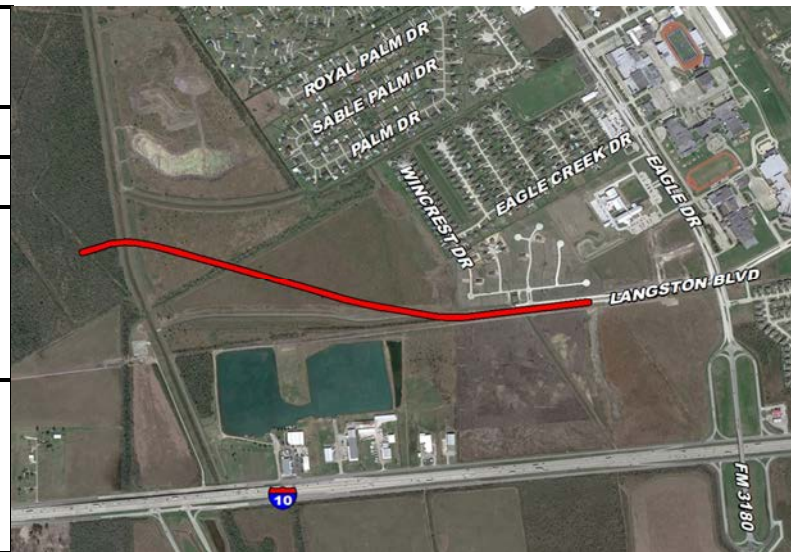
Notes:  
 (1) Construction cost from city staff.  
 (2) Project scheduled to follow TxDOT construction.

Project Costs	Prior Budget	Projected Allocations by Fiscal Year										TOTAL	
		18/19	19/20	20/21	21/22	22/23	23/24	24/25	25/26	26/27	27/28		
Land Acquisition													-
Design and Surveying			125,000										125,000
Construction							2,000,000						2,000,000
Contingency and Inflation			3,000				209,000						212,000
<b>TOTAL</b>	-	-	128,000	-	-	-	2,209,000	-	-	-	-	-	2,337,000

Funding Sources	Prior Funding	Projected Allocations by Fiscal Year										TOTAL	
		18/19	19/20	20/21	21/22	22/23	23/24	24/25	25/26	26/27	27/28		
Bond - Series 2014													-
Bond - Series 2015													-
Bond - Series 2016													-
Bond - Series 2017A													-
Bond - Series 2019													-
Bond - Series 2020			128,000										128,000
Bond - Series 2021													-
Bond - Series 2022													-
Bond - Series 2024							2,209,000						2,209,000
Bond - Series 2025													-
Bond - Series 2026													-
Bond - Series 2027													-
Bond - Series 2028													-
Grant													-
Impact fees													-
Unallocated funds													-
<b>TOTAL</b>	-	-	128,000	-	-	-	2,209,000	-	-	-	-	-	2,337,000

**CITY OF MONT BELVIEU, TEXAS  
2018-2028 CAPITAL IMPROVEMENTS PLAN**

<b>Project Name</b>	Langston Blvd. from Eagle Dr. to Grand Parkway - Complete Boulevard, Landscaping, Hardscaping, Illumination
<b>Project Category</b>	Transportation
<b>Project Number</b>	TBD
<b>Project Description</b>	Construct final two lanes to expand roadway to complete boulevard configuration. Install decorative landscaping, specialty lighting, and paving along Langston Blvd. as elements of the future Hackberry Park.
<b>Project Justification</b>	Development and Grand Parkway necessitate additional roadway capacity to serve community. Aesthetic improvements positively impact the community. The road is a major component of the future Hackberry Park as adopted by City Council.



Notes:  
(1) Construction cost from city staff.  
(2) Project in +5 year range.

Project Costs	Prior Budget	Projected Allocations by Fiscal Year										TOTAL	
		18/19	19/20	20/21	21/22	22/23	23/24	24/25	25/26	26/27	27/28		
Land Acquisition													-
Design and Surveying												459,000	459,000
Construction												3,060,000	3,060,000
Contingency and Inflation												687,000	687,000
<b>TOTAL</b>	-	-	-	-	-	-	-	-	-	-	-	4,206,000	4,206,000

Funding Sources	Prior Funding	Projected Allocations by Fiscal Year										TOTAL	
		18/19	19/20	20/21	21/22	22/23	23/24	24/25	25/26	26/27	27/28		
Bond - Series 2014													-
Bond - Series 2015													-
Bond - Series 2016													-
Bond - Series 2017A													-
Bond - Series 2019													-
Bond - Series 2020													-
Bond - Series 2021													-
Bond - Series 2022													-
Bond - Series 2024													-
Bond - Series 2025													-
Bond - Series 2026													-
Bond - Series 2027													-
Bond - Series 2028												4,206,000	4,206,000
Grant													-
Impact fees													-
Unallocated funds													-
<b>TOTAL</b>	-	-	-	-	-	-	-	-	-	-	-	4,206,000	4,206,000

**CITY OF MONT BELVIEU, TEXAS  
2018-2028 CAPITAL IMPROVEMENTS PLAN**

<b>Project Name</b>	Perry Ave. from WWTP to FM 1409
<b>Project Category</b>	Transportation
<b>Project Number</b>	TBD
<b>Project Description</b>	Construct 0.87 mile of two-lane roadway to complete buildout of the Perry Avenue boulevard section. Includes pavement and storm sewer.
<b>Project Justification</b>	New development and population growth necessitate expansion of city road network. Perry Ave. extension will accommodate traffic from BHIS and future FM 1409.



Notes:

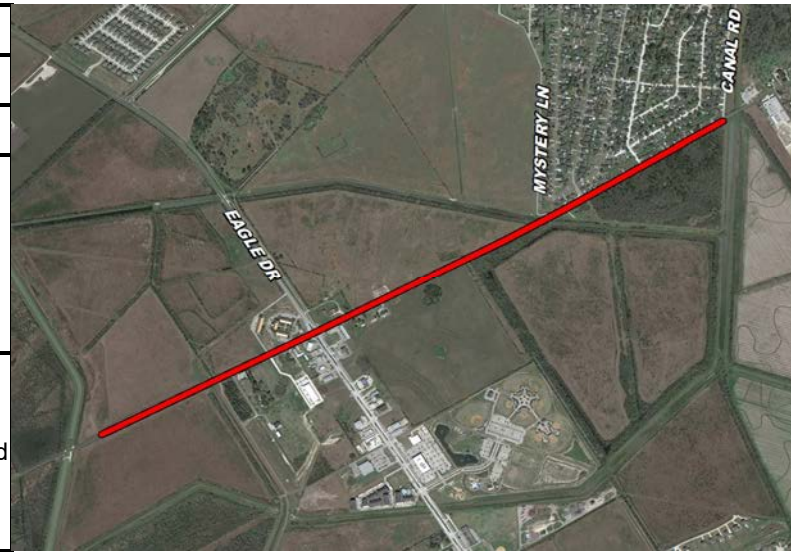
- (1) Construction cost from estimate calculated by Jones and Carter.
- (2) Potential cost share with Barbers Hill Independent School District.

Project Costs	Prior Budget	Projected Allocations by Fiscal Year										TOTAL
		18/19	19/20	20/21	21/22	22/23	23/24	24/25	25/26	26/27	27/28	
Land Acquisition												-
Design and Surveying			146,000									146,000
Construction				1,181,000								1,181,000
Contingency and Inflation			3,000	48,000								51,000
<b>TOTAL</b>	-	-	149,000	1,229,000	-	-	-	-	-	-	-	1,378,000

Funding Sources	Prior Funding	Projected Allocations by Fiscal Year										TOTAL
		18/19	19/20	20/21	21/22	22/23	23/24	24/25	25/26	26/27	27/28	
Bond - Series 2014												-
Bond - Series 2015												-
Bond - Series 2016			149,000									149,000
Bond - Series 2017A				1,229,000								1,229,000
Bond - Series 2019												-
Bond - Series 2020												-
Bond - Series 2021												-
Bond - Series 2022												-
Bond - Series 2024												-
Bond - Series 2025												-
Bond - Series 2026												-
Bond - Series 2027												-
Bond - Series 2028												-
Grant												-
Impact fees												-
Unallocated funds												-
<b>TOTAL</b>	-	-	149,000	1,229,000	-	-	-	-	-	-	-	1,378,000

**CITY OF MONT BELVIEU, TEXAS  
2018-2028 CAPITAL IMPROVEMENTS PLAN**

<b>Project Name</b>	FM 565 Reconstruction
<b>Project Category</b>	Transportation
<b>Project Number</b>	TBD
<b>Project Description</b>	Reconstruction of FM 565 from Grand Parkway to Canal St. in support of the planned Town Center. Project will consist of two phases: (1) 3,300 LF of urban boulevard from Grand Parkway to Eagle Drive (102-ft ROW) and (2) 6,400 LF of improved roadway from Eagle Dr. to Canal St. (70-ft ROW).
<b>Project Justification</b>	To support the development of the Town Center proposed by the Mont Belvieu Livable Centers Study (2018), public infrastructure improvements are needed along FM 565, which is a central corridor within the Town Center.



**Notes:**

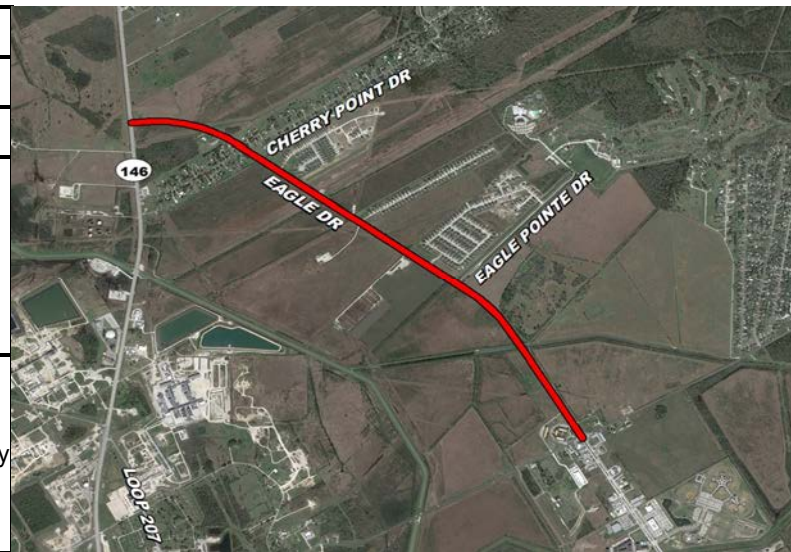
- (1) Construction unit costs adapted from reconstruction costs for Eagle Drive between Interstate 10 and FM 565 (2011).
- (2) Project in 5 to 10 year range.
- (3) Contingent upon grant funding (80% grant, 20% local).
- (4) Inflation calculated from 2011 base year.

Project Costs	Prior Budget	Projected Allocations by Fiscal Year										TOTAL	
		18/19	19/20	20/21	21/22	22/23	23/24	24/25	25/26	26/27	27/28		
Land Acquisition													-
Design and Surveying											1,750,000		1,750,000
Construction											11,656,000		11,656,000
Contingency and Inflation											4,637,000		4,637,000
<b>TOTAL</b>	-	-	-	-	-	-	-	-	-	-	18,043,000	-	18,043,000

Funding Sources	Prior Funding	Projected Allocations by Fiscal Year										TOTAL	
		18/19	19/20	20/21	21/22	22/23	23/24	24/25	25/26	26/27	27/28		
Bond - Series 2014													-
Bond - Series 2015													-
Bond - Series 2016													-
Bond - Series 2017A													-
Bond - Series 2019													-
Bond - Series 2020													-
Bond - Series 2021													-
Bond - Series 2022													-
Bond - Series 2024													-
Bond - Series 2025													-
Bond - Series 2026													-
Bond - Series 2027													-
Bond - Series 2028													-
Grant											14,434,400		14,434,400
Impact fees													-
Unallocated funds											3,608,600		3,608,600
<b>TOTAL</b>	-	-	-	-	-	-	-	-	-	-	18,043,000	-	18,043,000

**CITY OF MONT BELVIEU, TEXAS  
2018-2028 CAPITAL IMPROVEMENTS PLAN**

<b>Project Name</b>	Eagle Dr. from FM 565 to SH 146
<b>Project Category</b>	Transportation
<b>Project Number</b>	TBD
<b>Project Description</b>	Reconstruction of Eagle Dr. from FM 565 to SH 146 from undivided 2-lane roadway to divided 4-lane boulevard.
<b>Project Justification</b>	New development north of FM 565 necessitates increased roadway capacity to better serve community members.



**Notes:**

- (1) Construction unit costs adapted from reconstruction costs for Eagle Drive between Interstate 10 and FM 565 (2011).
- (2) Project in 5 to 10 year range.
- (3) Contingent upon grant funding (80% grant, 20% local).
- (4) Inflation calculated from 2011 base year.

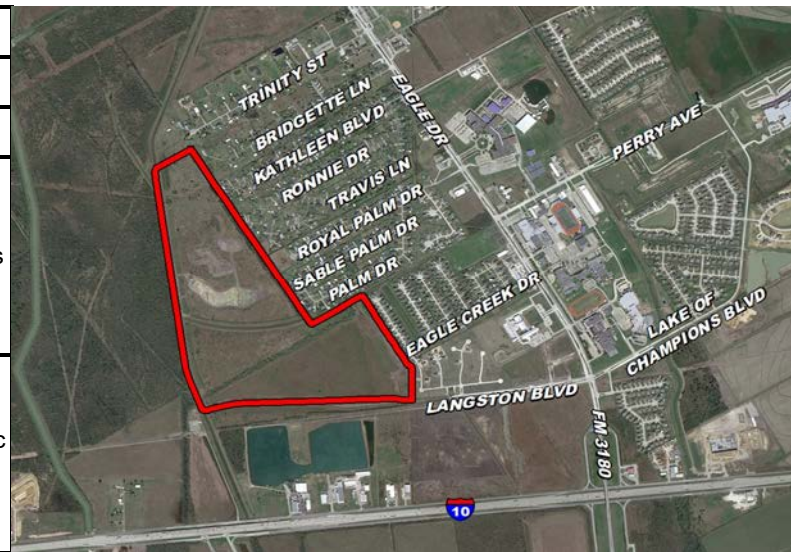
Project Costs	Prior Budget	Projected Allocations by Fiscal Year										TOTAL	
		18/19	19/20	20/21	21/22	22/23	23/24	24/25	25/26	26/27	27/28		
Land Acquisition													-
Design and Surveying										2,710,000			2,710,000
Construction										18,031,000			18,031,000
Contingency and Inflation										6,627,000			6,627,000
<b>TOTAL</b>	-	-	-	-	-	-	-	-	-	27,368,000	-	-	27,368,000

Funding Sources	Prior Funding	Projected Allocations by Fiscal Year										TOTAL	
		18/19	19/20	20/21	21/22	22/23	23/24	24/25	25/26	26/27	27/28		
Bond - Series 2014													-
Bond - Series 2015													-
Bond - Series 2016													-
Bond - Series 2017A													-
Bond - Series 2019													-
Bond - Series 2020													-
Bond - Series 2021													-
Bond - Series 2022													-
Bond - Series 2024													-
Bond - Series 2025													-
Bond - Series 2026													-
Bond - Series 2027													-
Bond - Series 2028													-
Grant										21,894,400			21,894,400
Impact fees													-
Unallocated funds										5,473,600			5,473,600
<b>TOTAL</b>	-	-	-	-	-	-	-	-	-	27,368,000	-	-	27,368,000



**CITY OF MONT BELVIEU, TEXAS  
2018-2028 CAPITAL IMPROVEMENTS PLAN**

<b>Project Name</b>	Hackberry Park
<b>Project Category</b>	Parks and Recreation
<b>Project Number</b>	TBD
<b>Project Description</b>	Design and development costs associated with the creation of Hackberry Park, including detention ponds and amenities.
<b>Project Justification</b>	Detention ponds necessary to mitigate drainage impact of future development. Additionally, new public park will improve the quality of life of Mont Belvieu community members.



**Notes:**

- (1) Construction cost from city staff – \$1 million per year for 10 years.
- (2) Design cost approximately 11% of construction cost.
- (3) Potential for partnership with developers for payment of \$36,000 per acre-foot of storage.
- (4) No inflation applied to this project.

Project Costs	Prior Budget	Projected Allocations by Fiscal Year										TOTAL	
		18/19	19/20	20/21	21/22	22/23	23/24	24/25	25/26	26/27	27/28		
Land Acquisition													-
Design and Surveying				100,000	100,000		100,000	100,000	200,000	200,000	100,000		900,000
Construction				900,000	900,000		900,000	900,000	1,800,000	1,800,000	900,000		8,100,000
Contingency and Inflation													-
<b>TOTAL</b>	-	-	-	1,000,000	1,000,000	-	1,000,000	1,000,000	2,000,000	2,000,000	1,000,000		9,000,000

Funding Sources	Prior Funding	Projected Allocations by Fiscal Year										TOTAL	
		18/19	19/20	20/21	21/22	22/23	23/24	24/25	25/26	26/27	27/28		
Bond - Series 2014													-
Bond - Series 2015													-
Bond - Series 2016													-
Bond - Series 2017A													-
Bond - Series 2019													-
Bond - Series 2020													-
Bond - Series 2021				1,000,000									1,000,000
Bond - Series 2022					1,000,000								1,000,000
Bond - Series 2024							1,000,000						1,000,000
Bond - Series 2025								1,000,000					1,000,000
Bond - Series 2026									2,000,000				2,000,000
Bond - Series 2027										2,000,000			2,000,000
Bond - Series 2028											1,000,000		1,000,000
Grant													-
Impact fees													-
Unallocated funds													-
<b>TOTAL</b>	-	-	-	1,000,000	1,000,000	-	1,000,000	1,000,000	2,000,000	2,000,000	1,000,000		9,000,000

**CITY OF MONT BELVIEU, TEXAS  
2018-2028 CAPITAL IMPROVEMENTS PLAN**

<b>Project Name</b>	Drainage Master Plan
<b>Project Category</b>	Drainage
<b>Project Number</b>	DR-010
<b>Project Description</b>	Engineering consultant shall perform analysis of existing drainage system and identify necessary future improvements. Includes analysis of areas flooded during Hurricane Harvey.
<b>Project Justification</b>	Population growth, development, and aging infrastructure necessitate a plan for how to best distribute city resources towards drainage issues.



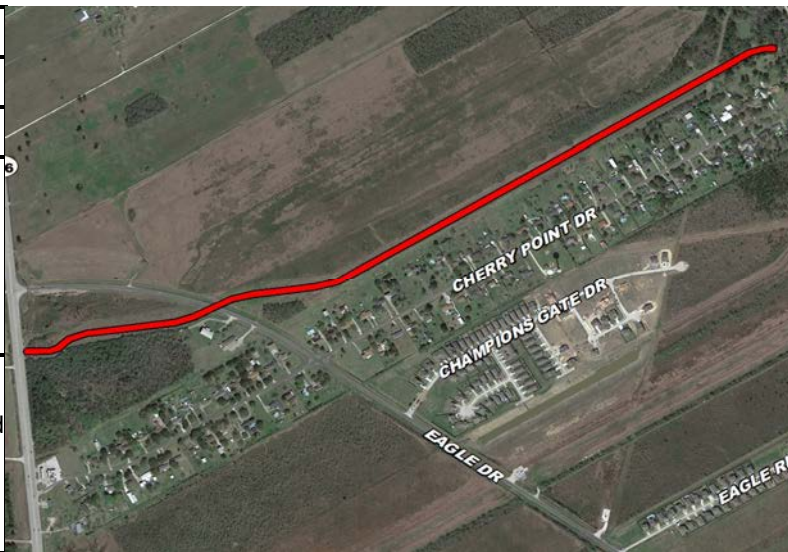
Notes:  
 (1) Consulting services cost from city staff.  
 (2) No inflation applied to active planning project.

Project Costs	Prior Budget	Projected Allocations by Fiscal Year										TOTAL	
		18/19	19/20	20/21	21/22	22/23	23/24	24/25	25/26	26/27	27/28		
Land Acquisition													-
Design and Surveying		350,000											350,000
Construction													-
Contingency and Inflation													-
<b>TOTAL</b>	-	350,000	-	-	-	-	-	-	-	-	-	-	350,000

Funding Sources	Prior Funding	Projected Allocations by Fiscal Year										TOTAL	
		18/19	19/20	20/21	21/22	22/23	23/24	24/25	25/26	26/27	27/28		
Bond - Series 2014		350,000											350,000
Bond - Series 2015													-
Bond - Series 2016													-
Bond - Series 2017A													-
Bond - Series 2019													-
Bond - Series 2020													-
Bond - Series 2021													-
Bond - Series 2022													-
Bond - Series 2024													-
Bond - Series 2025													-
Bond - Series 2026													-
Bond - Series 2027													-
Bond - Series 2028													-
Grant													-
Impact fees													-
Unallocated funds													-
<b>TOTAL</b>	-	350,000	-	-	-	-	-	-	-	-	-	-	350,000

**CITY OF MONT BELVIEU, TEXAS  
2018-2028 CAPITAL IMPROVEMENTS PLAN**

<b>Project Name</b>	Cherry Point Drainage – Conveyance Solution
<b>Project Category</b>	Drainage
<b>Project Number</b>	TBD
<b>Project Description</b>	Enlarge existing Cherry Point drainage channel from SH 146 to a point 1.2 miles downstream as a trapezoidal grass channel. Near Cherry Point Drive, channel will be enlarged into a trapezoidal concrete-lined channel. Also includes construction of mitigation pond.
<b>Project Justification</b>	Insufficient drainage within the Cherry Point watershed currently causes ponding in subdivisions and bridge overtopping during storm events.



**Notes:**

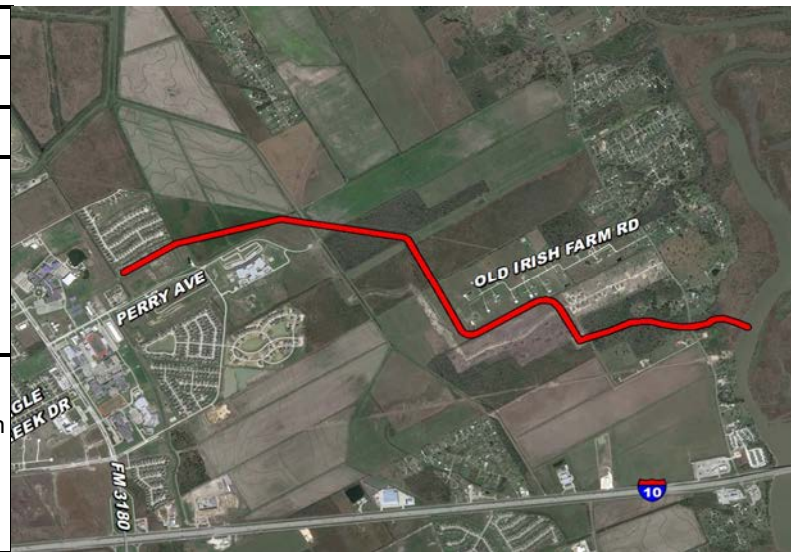
- (1) Construction cost estimate from City of Mont Belvieu Master Drainage Plan (Klotz Associates, 2009) and direction from city staff.
- (2) Design cost assumed to be 12% of construction cost.
- (3) Contingent on FEMA grant funding (75% federal, 25% local).

Project Costs	Prior Budget	Projected Allocations by Fiscal Year										TOTAL	
		18/19	19/20	20/21	21/22	22/23	23/24	24/25	25/26	26/27	27/28		
Land Acquisition													-
Design and Surveying				600,000									600,000
Construction					5,000,000								5,000,000
Contingency and Inflation				25,000	307,000								332,000
<b>TOTAL</b>	-	-	-	625,000	5,307,000	-	-	-	-	-	-	-	5,932,000

Funding Sources	Prior Funding	Projected Allocations by Fiscal Year										TOTAL	
		18/19	19/20	20/21	21/22	22/23	23/24	24/25	25/26	26/27	27/28		
Bond - Series 2014													-
Bond - Series 2015													-
Bond - Series 2016													-
Bond - Series 2017A													-
Bond - Series 2019													-
Bond - Series 2020													-
Bond - Series 2021													-
Bond - Series 2022													-
Bond - Series 2024													-
Bond - Series 2025													-
Bond - Series 2026													-
Bond - Series 2027													-
Bond - Series 2028													-
Grant				468,750	3,980,250								4,449,000
Impact fees													-
Unallocated funds				156,250	1,326,750								1,483,000
<b>TOTAL</b>	-	-	-	625,000	5,307,000	-	-	-	-	-	-	-	5,932,000

**CITY OF MONT BELVIEU, TEXAS  
2018-2028 CAPITAL IMPROVEMENTS PLAN**

<b>Project Name</b>	Cotton Bayou Diversion Channel
<b>Project Category</b>	Drainage
<b>Project Number</b>	TBD
<b>Project Description</b>	Construction of a 15,200 LF, 1,000 CFS overflow channel to service the Cotton Bayou watershed.
<b>Project Justification</b>	Mitigation of drainage issues related to ponding within the watershed, especially between Eagle Drive and Cotton Bayou.



**Notes:**

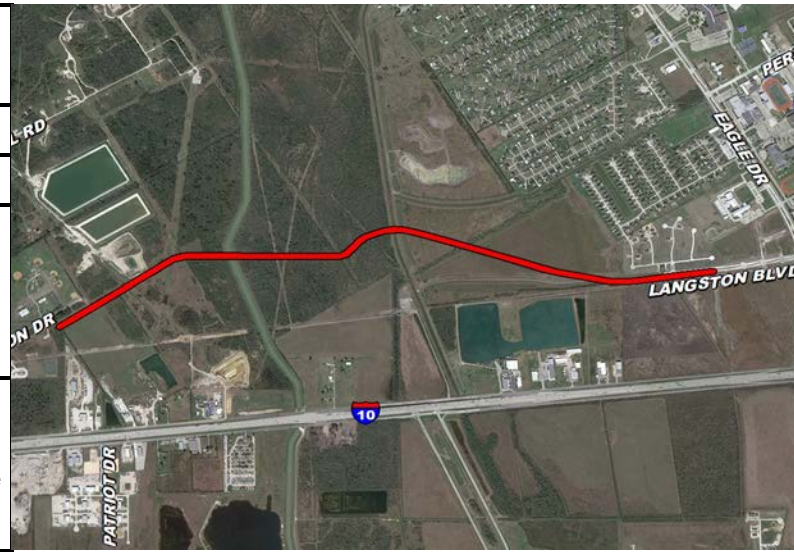
- (1) Construction cost estimate from City of Mont Belvieu Cotton Bayou Overflow Channel Feasibility Report (RPS Klotz Associates, 2016).
- (2) Design cost assumed to be 15% of construction cost.
- (3) Contingent on FEMA grant funding (75% federal, 25% local).
- (4) Inflation calculated from 2016 base year.

Project Costs	Prior Budget	Projected Allocations by Fiscal Year										TOTAL	
		18/19	19/20	20/21	21/22	22/23	23/24	24/25	25/26	26/27	27/28		
Land Acquisition												2,213,000	2,213,000
Design and Surveying												854,700	854,700
Construction												5,698,000	5,698,000
Contingency and Inflation												4,507,000	4,507,000
<b>TOTAL</b>	-	-	-	-	-	-	-	-	-	-	-	13,272,700	13,272,700

Funding Sources	Prior Funding	Projected Allocations by Fiscal Year										TOTAL	
		18/19	19/20	20/21	21/22	22/23	23/24	24/25	25/26	26/27	27/28		
Bond - Series 2014													-
Bond - Series 2015													-
Bond - Series 2016													-
Bond - Series 2017A													-
Bond - Series 2019													-
Bond - Series 2020													-
Bond - Series 2021													-
Bond - Series 2022													-
Bond - Series 2024													-
Bond - Series 2025													-
Bond - Series 2026													-
Bond - Series 2027													-
Bond - Series 2028													-
Grant												9,954,525	9,954,525
Impact fees													-
Unallocated funds												3,318,175	3,318,175
<b>TOTAL</b>	-	-	-	-	-	-	-	-	-	-	-	13,272,700	13,272,700

**CITY OF MONT BELVIEU, TEXAS  
2018-2028 CAPITAL IMPROVEMENTS PLAN**

<b>Project Name</b>	12" Waterline from Magnolia Landing to Langston Blvd.
<b>Project Category</b>	Water
<b>Project Number</b>	WA-007
<b>Project Description</b>	Design and construction 1.87 miles of new 12-inch water line and associated infrastructure.
<b>Project Justification</b>	Additional water service needed to support future residential and commercial development. New waterline will close loop south of the City and provide water for businesses on Interstate 10.



**Notes:**

- (1) Construction cost from internal estimate calculated by Jones & Carter.
- (2) No inflation applied to active project.

Project Costs	Prior Budget	Projected Allocations by Fiscal Year										TOTAL
		18/19	19/20	20/21	21/22	22/23	23/24	24/25	25/26	26/27	27/28	
Land Acquisition		100,000										100,000
Design and Surveying		300,000	150,000									450,000
Construction		1,100,000	1,100,000									2,200,000
Contingency and Inflation												-
<b>TOTAL</b>	-	1,500,000	1,250,000	-	-	-	-	-	-	-	-	2,750,000

Funding Sources	Prior Funding	Projected Allocations by Fiscal Year										TOTAL
		18/19	19/20	20/21	21/22	22/23	23/24	24/25	25/26	26/27	27/28	
Bond - Series 2014												-
Bond - Series 2015												-
Bond - Series 2016												-
Bond - Series 2017A												-
Bond - Series 2019		1,500,000	1,250,000									2,750,000
Bond - Series 2020												-
Bond - Series 2021												-
Bond - Series 2022												-
Bond - Series 2024												-
Bond - Series 2025												-
Bond - Series 2026												-
Bond - Series 2027												-
Bond - Series 2028												-
Grant												-
Impact fees												-
Unallocated funds												-
<b>TOTAL</b>	-	1,500,000	1,250,000	-	-	-	-	-	-	-	-	2,750,000

**CITY OF MONT BELVIEU, TEXAS  
2018-2028 CAPITAL IMPROVEMENTS PLAN**

<b>Project Name</b>	Waterline Hatcherville
<b>Project Category</b>	Water
<b>Project Number</b>	TBD
<b>Project Description</b>	Replacement of existing 2.22-mile 8" water line heading south from 12849 Hatcherville Rd. to the intersection of Hatcherville Rd. and Crosby Rd., then east on Crosby Rd. to the intersection with SH 146.
<b>Project Justification</b>	Increase capacity of aged infrastructure to better service local industry.



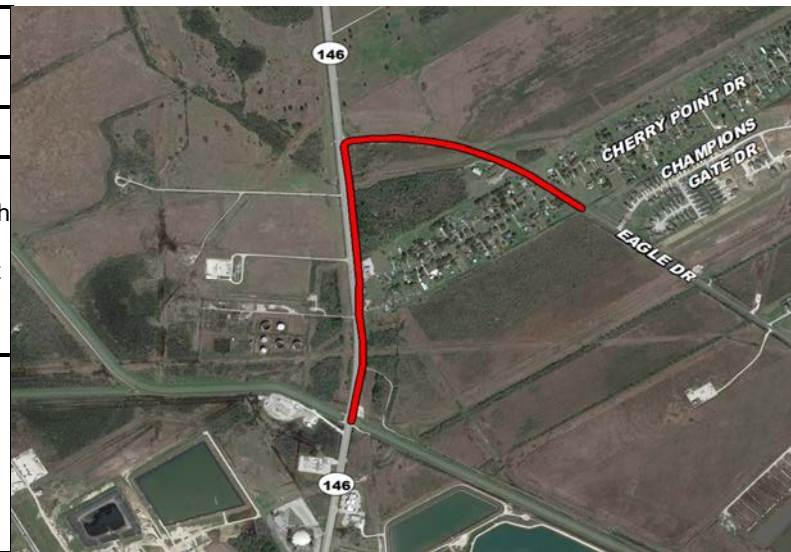
Notes:  
 (1) Construction cost from estimate calculated by Jones and Carter.  
 (2) Due to high density of pipelines, assume entire water line will be bored.

Project Costs	Prior Budget	Projected Allocations by Fiscal Year										TOTAL	
		18/19	19/20	20/21	21/22	22/23	23/24	24/25	25/26	26/27	27/28		
Land Acquisition													-
Design and Surveying								527,370					527,370
Construction								3,515,800					3,515,800
Contingency and Inflation								915,317					915,317
<b>TOTAL</b>	-	-	-	-	-	-	-	4,958,487	-	-	-	-	4,958,487

Funding Sources	Prior Funding	Projected Allocations by Fiscal Year										TOTAL	
		18/19	19/20	20/21	21/22	22/23	23/24	24/25	25/26	26/27	27/28		
Bond - Series 2014													-
Bond - Series 2015													-
Bond - Series 2016													-
Bond - Series 2017A													-
Bond - Series 2019													-
Bond - Series 2020													-
Bond - Series 2021													-
Bond - Series 2022													-
Bond - Series 2024													-
Bond - Series 2025								4,958,487					4,958,487
Bond - Series 2026													-
Bond - Series 2027													-
Bond - Series 2028													-
Grant													-
Impact fees													-
Unallocated funds													-
<b>TOTAL</b>	-	-	-	-	-	-	-	4,958,487	-	-	-	-	4,958,487

**CITY OF MONT BELVIEU, TEXAS  
2018-2028 CAPITAL IMPROVEMENTS PLAN**

<b>Project Name</b>	12" Waterline along North SH 146
<b>Project Category</b>	Water
<b>Project Number</b>	TBD
<b>Project Description</b>	Construction of new 1.11-mile water line heading north from north bank of CWA Canal along SH 146, then east along FM 3360 to city limit south of Cherry Point Road.
<b>Project Justification</b>	New waterline will provide additional capacity to northern section of the city and complete the loop in the existing waterline network.



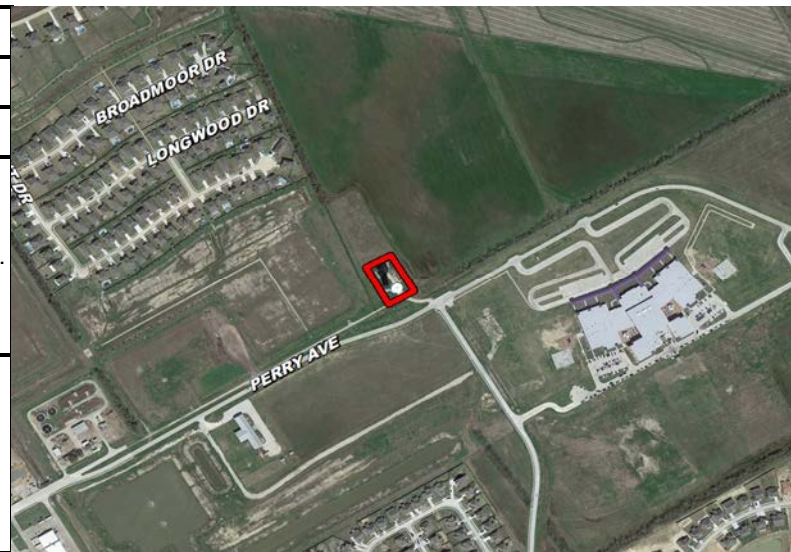
Notes:  
 (1) Construction cost from city staff.  
 (2) Project in +5 year range.  
 (3) Design has been completed.

Project Costs	Prior Budget	Projected Allocations by Fiscal Year										TOTAL
		18/19	19/20	20/21	21/22	22/23	23/24	24/25	25/26	26/27	27/28	
Land Acquisition					100,000							100,000
Design and Surveying												-
Construction						1,400,000						1,400,000
Contingency and Inflation					7,000	116,000						123,000
<b>TOTAL</b>	-	-	-	-	107,000	1,516,000	-	-	-	-	-	1,623,000

Funding Sources	Prior Funding	Projected Allocations by Fiscal Year										TOTAL
		18/19	19/20	20/21	21/22	22/23	23/24	24/25	25/26	26/27	27/28	
Bond - Series 2014												-
Bond - Series 2015												-
Bond - Series 2016												-
Bond - Series 2017A												-
Bond - Series 2019												-
Bond - Series 2020												-
Bond - Series 2021												-
Bond - Series 2022												-
Bond - Series 2024												-
Bond - Series 2025												-
Bond - Series 2026												-
Bond - Series 2027												-
Bond - Series 2028												-
Grant												-
Impact fees					107,000	1,516,000						1,623,000
Unallocated funds												-
<b>TOTAL</b>	-	-	-	-	107,000	1,516,000	-	-	-	-	-	1,623,000

**CITY OF MONT BELVIEU, TEXAS  
2018-2028 CAPITAL IMPROVEMENTS PLAN**

<b>Project Name</b>	Perry Well Rehabilitation
<b>Project Category</b>	Water
<b>Project Number</b>	TBD
<b>Project Description</b>	Rehabilitation and maintenance of existing water well.
<b>Project Justification</b>	Aging infrastructure requires renovation to meet demands of growing community.



Notes:  
(1) Construction cost from city staff.

Project Costs	Prior Budget	Projected Allocations by Fiscal Year										TOTAL
		18/19	19/20	20/21	21/22	22/23	23/24	24/25	25/26	26/27	27/28	
Land Acquisition												-
Design and Surveying												-
Construction		100,000										100,000
Contingency and Inflation												-
<b>TOTAL</b>	-	100,000	-	-	-	-	-	-	-	-	-	100,000

Funding Sources	Prior Funding	Projected Allocations by Fiscal Year										TOTAL
		18/19	19/20	20/21	21/22	22/23	23/24	24/25	25/26	26/27	27/28	
Bond - Series 2014												-
Bond - Series 2015		100,000										100,000
Bond - Series 2016												-
Bond - Series 2017A												-
Bond - Series 2019												-
Bond - Series 2020												-
Bond - Series 2021												-
Bond - Series 2022												-
Bond - Series 2024												-
Bond - Series 2025												-
Bond - Series 2026												-
Bond - Series 2027												-
Bond - Series 2028												-
Grant												-
Impact fees												-
Unallocated funds												-
<b>TOTAL</b>	-	100,000	-	-	-	-	-	-	-	-	-	100,000



**CITY OF MONT BELVIEU, TEXAS  
2018-2028 CAPITAL IMPROVEMENTS PLAN**

<b>Project Name</b>	Wastewater Treatment Plant (WWTP) Reconstruction
<b>Project Category</b>	Wastewater
<b>Project Number</b>	SS-002
<b>Project Description</b>	Expansion of the 1.5MGD WWTP to 4.5 MGD through the construction of a new facility and repurposing of the existing facility.
<b>Project Justification</b>	Current WWTP is nearing capacity and must be expanded to meet future demand. Expansion shall also bring facility into compliance with TCEQ regulations.



**Notes:**

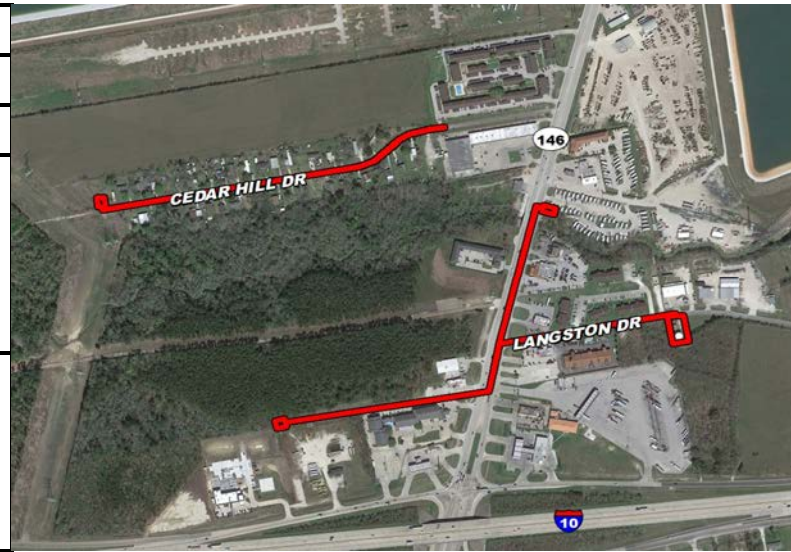
- (1) Cost from estimate produced by Jones & Carter based on estimated need of additional 3 MGD of capacity.
- (2) Does not include costs for interim phase.
- (3) Construction cost includes construction management and inspection costs.
- (4) Phase I = \$15 million for capacity of 1.5 MGD.
- (5) Phase II = \$18 million for capacity of 1.5 MGD to include a factor for inflation of approximately 16%.

Project Costs	Prior Budget	Projected Allocations by Fiscal Year										TOTAL
		18/19	19/20	20/21	21/22	22/23	23/24	24/25	25/26	26/27	27/28	
Land Acquisition												-
Design and Surveying		1,000,000	600,000					1,500,000	500,000			3,600,000
Construction			3,000,000	6,500,000	6,500,000				9,000,000	9,000,000		34,000,000
Contingency and Inflation												-
<b>TOTAL</b>	-	1,000,000	3,600,000	6,500,000	6,500,000	-	-	1,500,000	9,500,000	9,000,000	-	37,600,000

Funding Sources	Prior Funding	Projected Allocations by Fiscal Year										TOTAL
		18/19	19/20	20/21	21/22	22/23	23/24	24/25	25/26	26/27	27/28	
Bond - Series 2014												-
Bond - Series 2015												-
Bond - Series 2016												-
Bond - Series 2017A												-
Bond - Series 2019		1,000,000	3,600,000	250,000								4,850,000
Bond - Series 2020				6,250,000	6,500,000							12,750,000
Bond - Series 2021												-
Bond - Series 2022												-
Bond - Series 2024								1,500,000	500,000			2,000,000
Bond - Series 2025									9,000,000	9,000,000		18,000,000
Bond - Series 2026												-
Bond - Series 2027												-
Bond - Series 2028												-
Grant												-
Impact fees												-
Unallocated funds												-
<b>TOTAL</b>	-	1,000,000	3,600,000	6,500,000	6,500,000	-	-	1,500,000	9,500,000	9,000,000	-	37,600,000

**CITY OF MONT BELVIEU, TEXAS  
2018-2028 CAPITAL IMPROVEMENTS PLAN**

<b>Project Name</b>	Lift Station Abandonment
<b>Project Category</b>	Wastewater
<b>Project Number</b>	TBD
<b>Project Description</b>	Includes abandonment of three lift stations, construction of a new lift station on Langston Dr., abandonment of approximately 6,800 LF of sanitary sewer, and installation of approximately 1,800 LF of force main and 3,200 LF of gravity sewer.
<b>Project Justification</b>	Aging infrastructure must be replaced to serve local industry.



**Notes:**

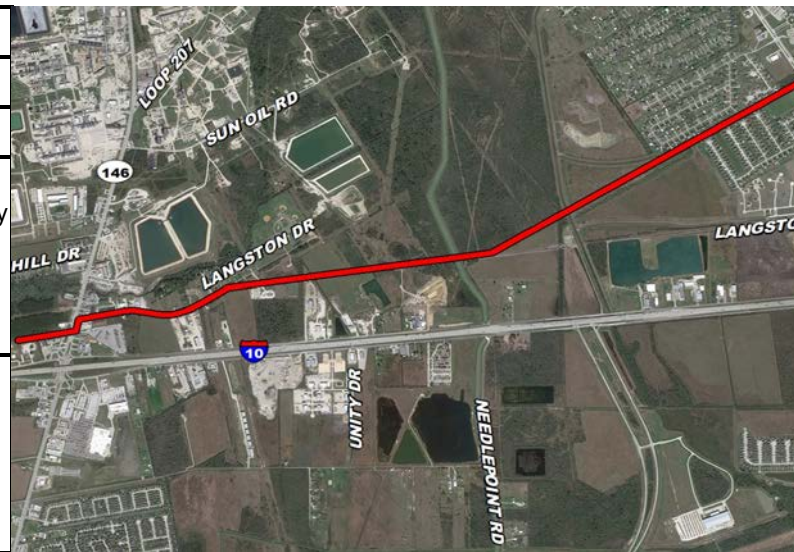
- (1) Construction and contingency costs from City of Mont Belvieu Wastewater Collection System Planning Study (Parsons, October 2018).
- (2) Contingent on FEMA grant funding (75% federal, 25% local).

Project Costs	Prior Budget	Projected Allocations by Fiscal Year										TOTAL
		18/19	19/20	20/21	21/22	22/23	23/24	24/25	25/26	26/27	27/28	
Land Acquisition												-
Design and Surveying			350,000									350,000
Construction			2,810,000									2,810,000
Contingency and Inflation			64,000									64,000
<b>TOTAL</b>	-	-	3,224,000	-	-	-	-	-	-	-	-	3,224,000

Funding Sources	Prior Funding	Projected Allocations by Fiscal Year										TOTAL
		18/19	19/20	20/21	21/22	22/23	23/24	24/25	25/26	26/27	27/28	
Bond - Series 2014												-
Bond - Series 2015												-
Bond - Series 2016												-
Bond - Series 2017A												-
Bond - Series 2019												-
Bond - Series 2020												-
Bond - Series 2021												-
Bond - Series 2022												-
Bond - Series 2024												-
Bond - Series 2025												-
Bond - Series 2026												-
Bond - Series 2027												-
Bond - Series 2028												-
Grant			2,418,000									2,418,000
Impact fees												-
Unallocated funds			806,000									806,000
<b>TOTAL</b>	-	-	3,224,000	-	-	-	-	-	-	-	-	3,224,000

**CITY OF MONT BELVIEU, TEXAS  
2018-2028 CAPITAL IMPROVEMENTS PLAN**

<b>Project Name</b>	Southern East-West Deep Sewer
<b>Project Category</b>	Wastewater
<b>Project Number</b>	TBD
<b>Project Description</b>	Design and construction of 17,400 LF of deep sanitary sewer (varying sizes) connecting lift station 11 to existing 42" sewer at Perry Ave. and Eagle Dr. along Langston Blvd.
<b>Project Justification</b>	Additional system capacity from new sanitary sewer connection will offset inflow and infiltration.



**Notes:**

- (1) Construction and contingency costs from City of Mont Belvieu Wastewater Collection System Planning Study (Parsons, October 2018).
- (2) Contingent on FEMA grant funding (75% federal, 25% local).

Project Costs	Prior Budget	Projected Allocations by Fiscal Year										TOTAL	
		18/19	19/20	20/21	21/22	22/23	23/24	24/25	25/26	26/27	27/28		
Land Acquisition													-
Design and Surveying							753,000						753,000
Construction							5,015,000						5,015,000
Contingency and Inflation							2,106,000						2,106,000
<b>TOTAL</b>	-	-	-	-	-	-	7,874,000	-	-	-	-	-	7,874,000

Funding Sources	Prior Funding	Projected Allocations by Fiscal Year										TOTAL	
		18/19	19/20	20/21	21/22	22/23	23/24	24/25	25/26	26/27	27/28		
Bond - Series 2014													-
Bond - Series 2015													-
Bond - Series 2016													-
Bond - Series 2017A													-
Bond - Series 2019													-
Bond - Series 2020													-
Bond - Series 2021													-
Bond - Series 2022													-
Bond - Series 2024													-
Bond - Series 2025													-
Bond - Series 2026													-
Bond - Series 2027													-
Bond - Series 2028													-
Grant							5,905,500						5,905,500
Impact fees													-
Unallocated funds							1,968,500						1,968,500
<b>TOTAL</b>	-	-	-	-	-	-	7,874,000	-	-	-	-	-	7,874,000

**CITY OF MONT BELVIEU, TEXAS  
2018-2028 CAPITAL IMPROVEMENTS PLAN**

<b>Project Name</b>	Salaries
<b>Project Category</b>	Miscellaneous
<b>Project Number</b>	N/A
<b>Project Description</b>	Allocations for salaries for city staff.
<b>Project Justification</b>	Allocations for salaries for city staff.



Notes:  
(1) Costs from city staff. Assume 5% annual inflation.

Project Costs	Prior Budget	Projected Allocations by Fiscal Year										TOTAL	
		18/19	19/20	20/21	21/22	22/23	23/24	24/25	25/26	26/27	27/28		
Land Acquisition													-
Design and Surveying													-
Construction													-
Contingency and Inflation													-
<b>TOTAL</b>	-	1,131,593	1,188,173	1,247,581	1,309,960	1,375,458	1,444,231	1,516,443	1,592,265	1,671,878	1,755,472	14,233,055	

Funding Sources	Prior Funding	Projected Allocations by Fiscal Year										TOTAL	
		18/19	19/20	20/21	21/22	22/23	23/24	24/25	25/26	26/27	27/28		
Bond - Series 2014													-
Bond - Series 2015		1,131,593											1,131,593
Bond - Series 2016													-
Bond - Series 2017A													-
Bond - Series 2019			1,188,173	1,247,581									2,435,754
Bond - Series 2020													-
Bond - Series 2021					1,309,960								1,309,960
Bond - Series 2022						1,375,458							1,375,458
Bond - Series 2024							1,444,231	1,516,443					2,960,674
Bond - Series 2025									1,592,265				1,592,265
Bond - Series 2026										1,671,878			1,671,878
Bond - Series 2027											1,755,472		1,755,472
Bond - Series 2028													-
Grant													-
Impact fees													-
Unallocated funds													-
<b>TOTAL</b>	-	1,131,593	1,188,173	1,247,581	1,309,960	1,375,458	1,444,231	1,516,443	1,592,265	1,671,878	1,755,472	14,233,055	