

BARKER CYPRESS AT US 290 INTERSECTION

SIX LANE EXPANSION

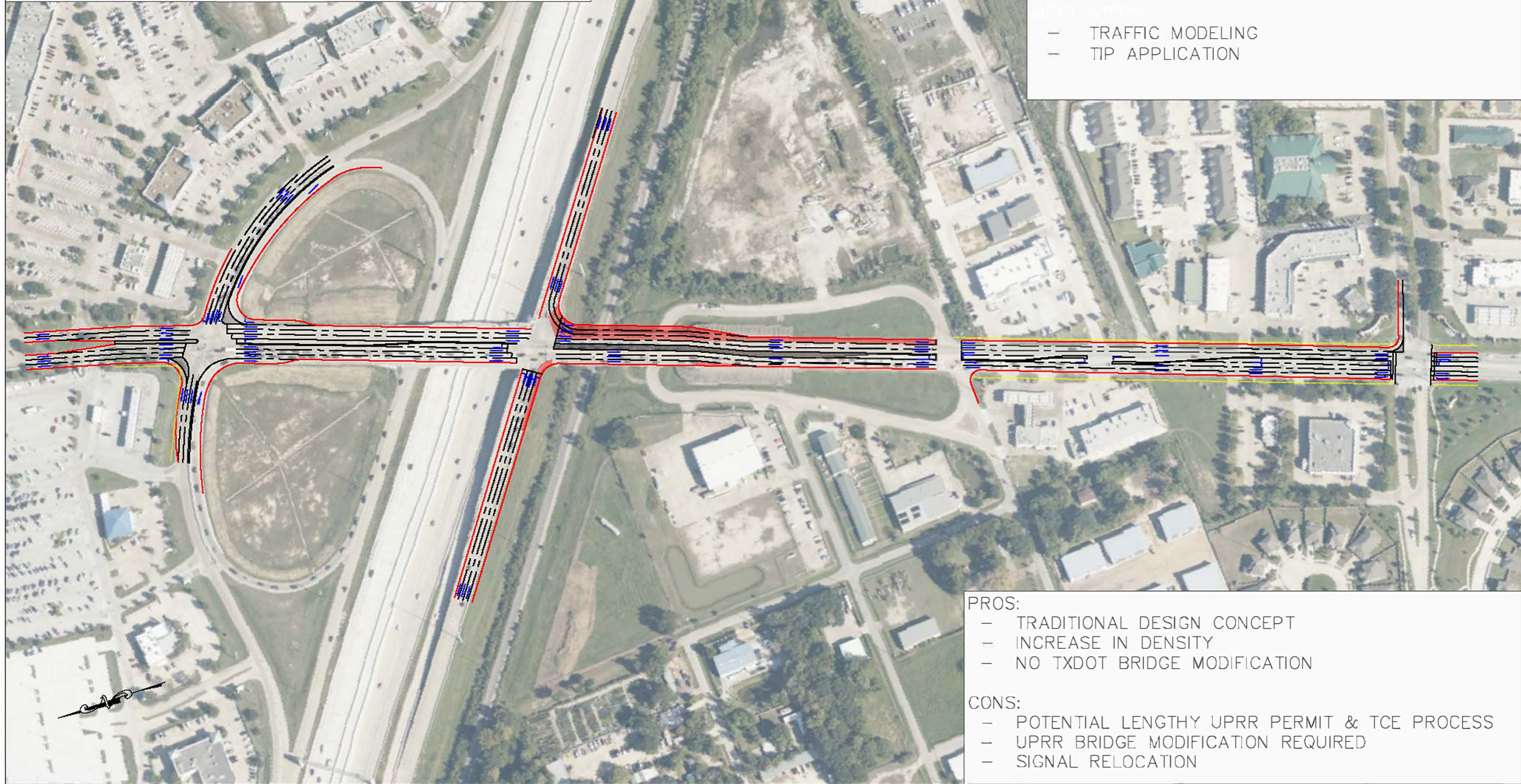
PROJECT STATUS: PLANNING PHASE

EXECUTIVE SUMMARY

TIMELINE: 1.5 YEARS

NEXT STEPS:

- TRAFFIC MODELING
- TIP APPLICATION



PROS:

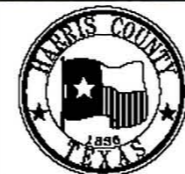
- TRADITIONAL DESIGN CONCEPT
- INCREASE IN DENSITY
- NO TXDOT BRIDGE MODIFICATION

CONS:

- POTENTIAL LENGTHY UPRR PERMIT & TCE PROCESS
- UPRR BRIDGE MODIFICATION REQUIRED
- SIGNAL RELOCATION

NO.	REVISIONS	DATE	NAME

HARRIS COUNTY
ENGINEERING DEPARTMENT



FOR INTERIM REVIEW ONLY
DOCUMENT INCOMPLETE.
NOT INTENDED FOR CONSTRUCTION,
BIDDING, OR PERMIT PURPOSES
ENGINEER: NAME
P.E. SERIAL No. NUMBER
DATE: / /

PROJECT TITLE: US 290 AT BARKER CYPRESS ROAD	
SHEET DESCRIPTION: SIX LANE EXPANSION	
DRAWN BY: MM/TMW	DATE: 4/29/2021
CK'D BY:	SHEET NO: 1 / 1
SCALE: 1" = 120'	

BARKER CYPRESS AT US 290 INTERSECTION

ROUNDBABOUT – OPTION 1

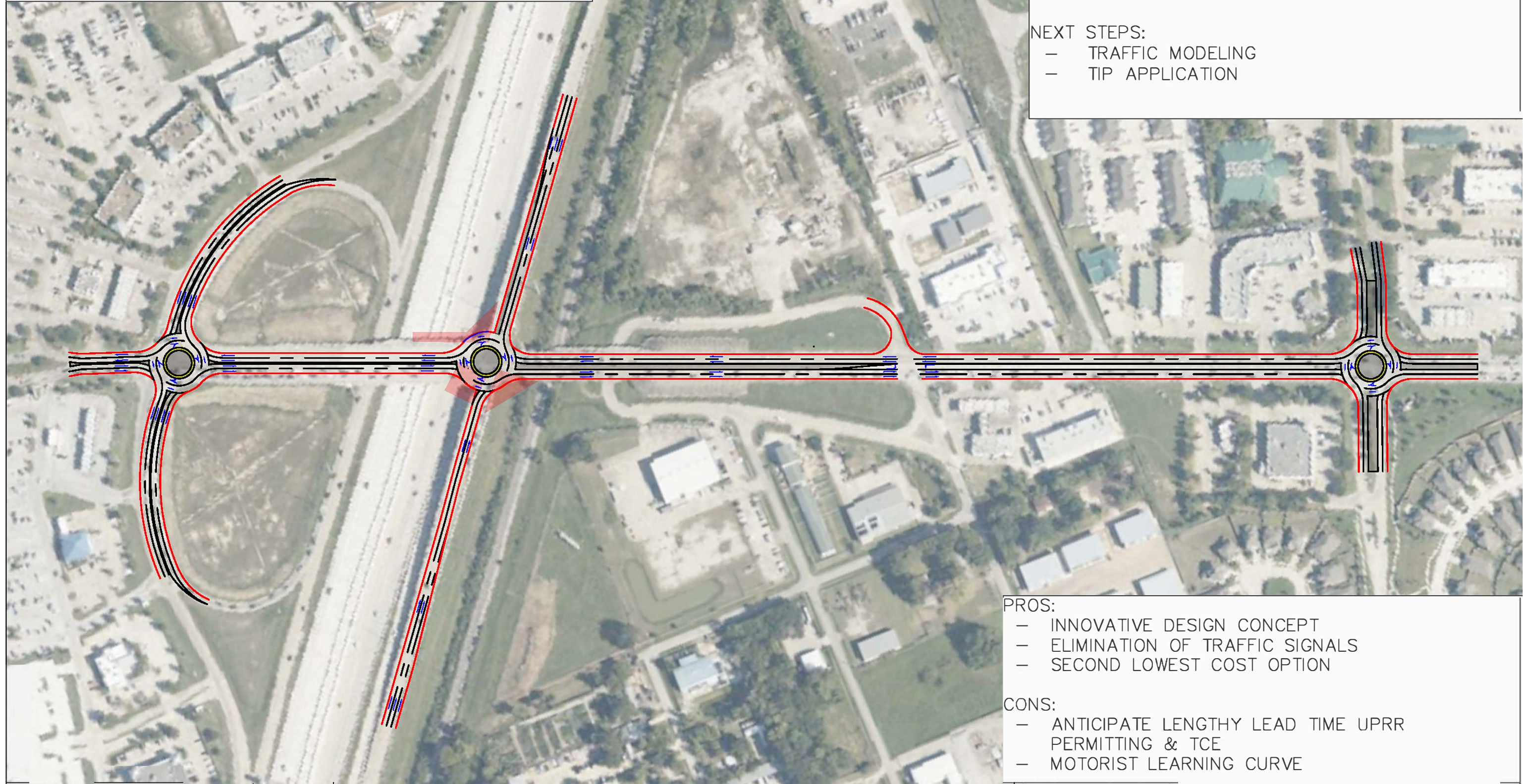
PROJECT STATUS: PLANNING PHASE

EXECUTIVE SUMMARY

TIMELINE: 1.5 YEARS

NEXT STEPS:

- TRAFFIC MODELING
- TIP APPLICATION



PROS:

- INNOVATIVE DESIGN CONCEPT
- ELIMINATION OF TRAFFIC SIGNALS
- SECOND LOWEST COST OPTION

CONS:

- ANTICIPATE LENGTHY LEAD TIME UPRR PERMITTING & TCE
- MOTORIST LEARNING CURVE

NO.	REVISIONS	DATE	NAME

HARRIS COUNTY
ENGINEERING DEPARTMENT



FOR INTERIM REVIEW ONLY
DOCUMENT INCOMPLETE:
NOT INTENDED FOR CONSTRUCTION,
BIDDING, OR PERMIT PURPOSES
ENGINEER: NAME
P.E. SERIAL No. NUMBER
DATE: / /

PROJECT TITLE: US 290 AT BARKER CYPRESS ROAD
SHEET DESCRIPTION: OPTION 1 – OVERPASS ROUNDABOUT
DRAWN BY: MM
DATE: 1/21/2021
CK'D BY: SCAL
SCALE: 1" = 120'
1 / 1

BARKER CYPRESS AT US 290 INTERSECTION

ROUNDBOUT – OPTION 2 – SOUTH LOCATION

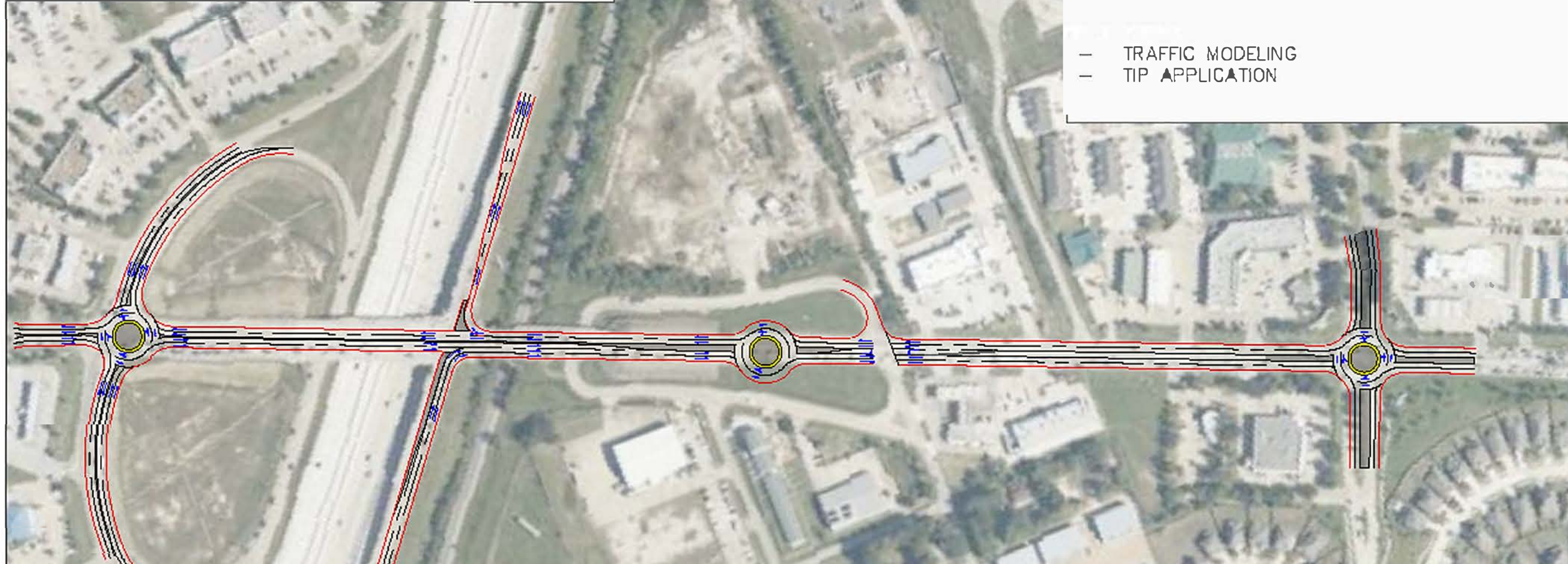
PROJECT STATUS: PLANNING PHASE

EXECUTIVE SUMMARY

TIMELINE: 1 YEAR

NEXT STEPS:

- TRAFFIC MODELING
- TIP APPLICATION



PROS:

- MINIMAL UPRR PERMIT & TCE TIME
- INNOVATIVE DESIGN CONCEPT
- ELIMINATION OF TRAFFIC SIGNALS
- LEAST EXPENSIVE CONCEPT
- NO MODIFICATION TO UPRR/TXDOT BRIDGES

CONS:

- THROUGH TRAFFIC OF SOUTH 290 INTERSECTION MUST STAY ON 290 FEEDER/DIVERT TO ROUNDABOUT
- MOTORIST LEARNING CURVE

NO.	REVISIONS

**HARRIS COUNTY
ENGINEERING DEPARTMENT**



FOR INTERIM REVIEW ONLY
DOCUMENT INCOMPLETE.
NOT INTENDED FOR CONSTRUCTION,
BIDDING, OR PERMIT PURPOSES
ENGINEER NAME:
P.E. SERIAL NO.:
DATE: / /

PROJECT TITLE:	US 290 AT BARKER CYPRESS ROAD
SHEET DESCRIPTION:	OPTION 2 – SOUTH ROUNDABOUT
DRAWN BY:	MM
CHECKED BY:	SCALE: 1" = 120'
DATE:	1/21/2021
SHEET NO.:	1 / 1

BARKER CYPRESS AT US 290 INTERSECTION

DIVERGING DIAMOND SCHEMATIC

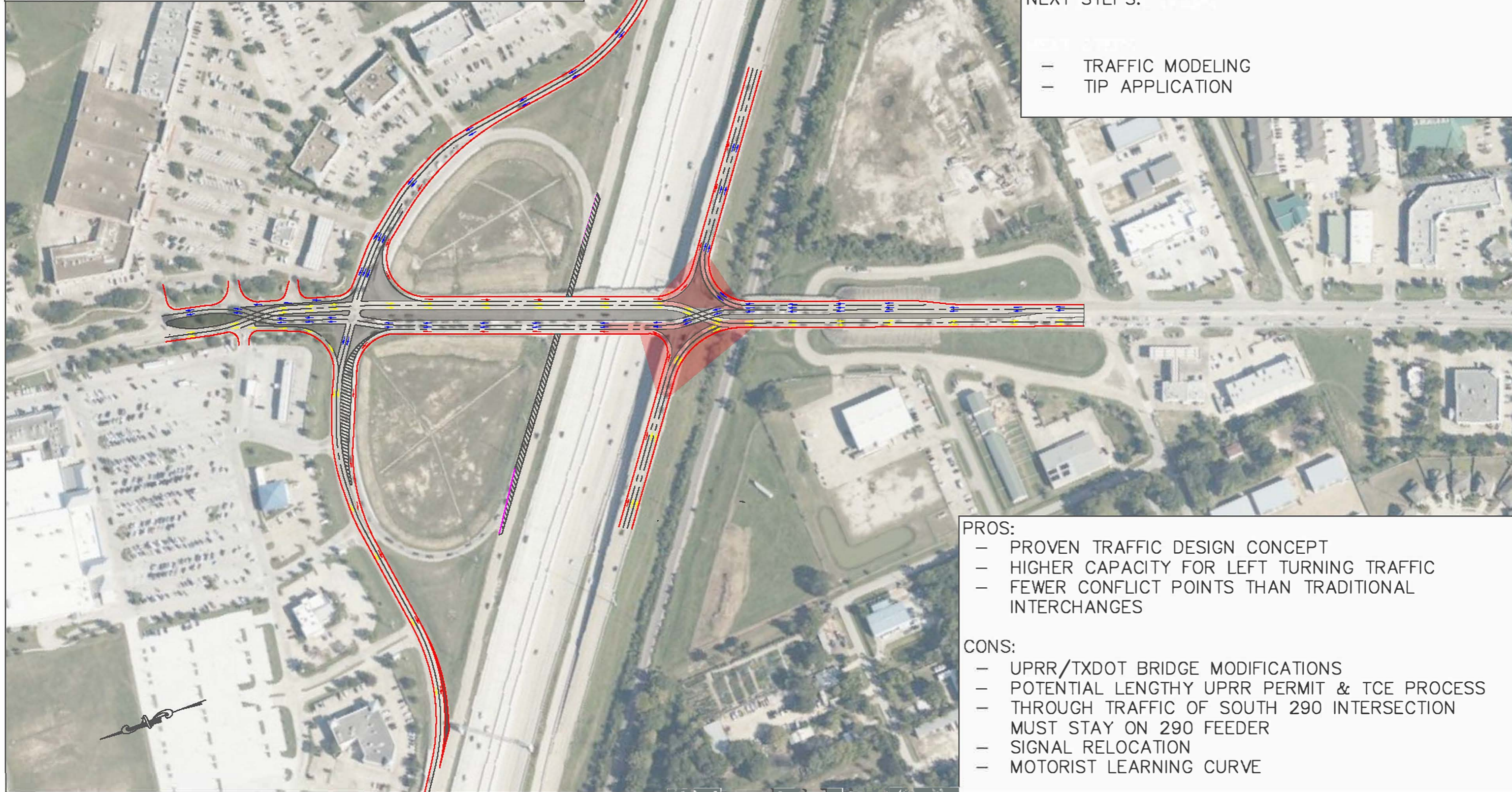
PROJECT STATUS: PLANNING PHASE

EXECUTIVE SUMMARY

TIMELINE: 1.5 YEARS

NEXT STEPS:

- TRAFFIC MODELING
- TIP APPLICATION



PROS:

- PROVEN TRAFFIC DESIGN CONCEPT
- HIGHER CAPACITY FOR LEFT TURNING TRAFFIC
- FEWER CONFLICT POINTS THAN TRADITIONAL INTERCHANGES

CONS:

- UPRR/TXDOT BRIDGE MODIFICATIONS
- POTENTIAL LENGTHY UPRR PERMIT & TCE PROCESS
- THROUGH TRAFFIC OF SOUTH 290 INTERSECTION MUST STAY ON 290 FEEDER
- SIGNAL RELOCATION
- MOTORIST LEARNING CURVE

NO.	REVISIONS	DATE	NAME

HARRIS COUNTY
ENGINEERING DEPARTMENT



FOR INTERIM REVIEW ONLY
DOCUMENT INCOMPLETE:
NOT INTENDED FOR CONSTRUCTION,
BIDDING, OR PERMIT PURPOSES
ENGINEER: NAME
P.E. SERIAL No. NUMBER
DATE: / /

PROJECT TITLE: US 290 AT BARKER CYPRESS ROAD	
SHEET DESCRIPTION: DIVERGING DIAMOND	
DRAWN BY: LB	DATE: 01/01/2021
CK'D BY:	SHEET NO: 1 / 1
SCALE: 1" = 120'	