



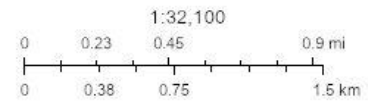
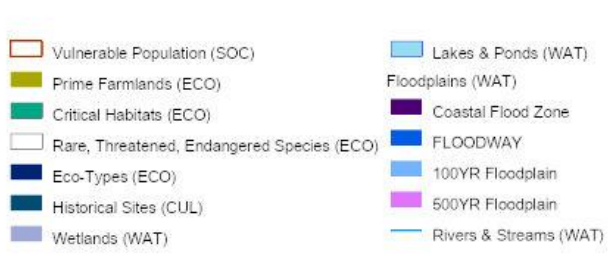
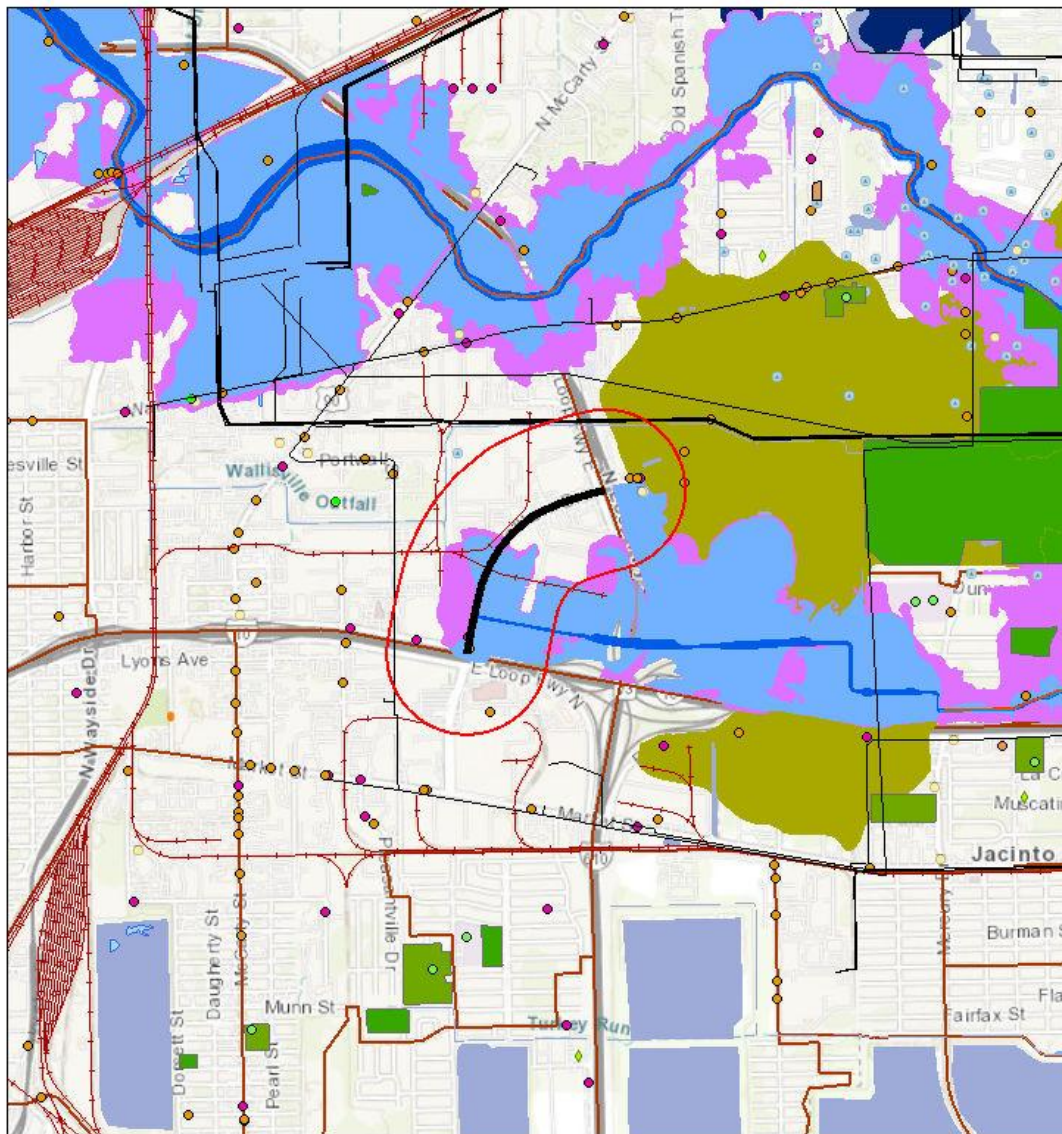
# Red Flag Report

## Area of Interest (AOI) Information

Area : 358.98 acres

May 9 2023 11:39:33 Central Daylight Time

### Letter ANSI A Portrait



City of Houston, HPS, Texas Parks & Wildlife, Esri, HERE, Garmin, INCREMENT P, USGS, MET/NASA, EPA, USDA

## Summary

Name	Count	Area(acres)	Length(mi)
Airports (INF)	0	N/A	N/A
Education Facilities (INF)	0	N/A	N/A
Hospitals (INF)	0	N/A	N/A
Religious Facilities (INF)	0	N/A	N/A
Pipelines (INF)	10	N/A	1.99
Railroad (INF)	10	N/A	1.44
Trails (INF)	0	N/A	0
Cemeteries (INF)	0	0	N/A
Managed Lands (INF)	0	0	N/A
Recreational Facilities (INF)	0	0	N/A
Mines & Mineral Resources (MIN)	0	N/A	N/A
Sand & Gravel Operations (MIN)	0	N/A	N/A
Wells (MIN)	0	N/A	N/A
Brownfields (HAZ)	0	N/A	N/A
Superfund Sites (HAZ)	0	N/A	N/A
Active Landfills (HAZ)	0	N/A	N/A
Closed Landfills (HAZ)	0	N/A	N/A
NPDES Facilities (HAZ)	8	N/A	N/A
RCRA Sites (HAZ)	5	N/A	N/A
Underground Storage Tanks (HAZ)	1	N/A	N/A
Impaired 303D Waterways (WAT)	0	N/A	0
Rivers & Streams (WAT)	0	N/A	0
<b>Floodplains (WAT)</b>	9	<b>107.78</b>	N/A
Lakes & Ponds (WAT)	0	0	N/A
<b>Wetlands (WAT)</b>	2	<b>3.24</b>	N/A
<b>Historical Sites (CUL)</b>	0	<b>0</b>	N/A
Eco-Types (ECO)	0	0	N/A
Rare, Threatened, Endangered Species (ECO)	1	358.98	N/A
Critical Habitats (ECO)	0	0	N/A
Prime Farmlands (ECO)	1	37.22	N/A
Vulnerable Population (SOC)	3	358.98	N/A

## Pipelines (INF)

#	Operator	System Name	Diameter	Commodity	System Type	County	Length(mi)
1	MAGELLAN CRUDE OIL PL CO, L.P.	MAGELLAN PIPE LINE	16	CRUDE OIL	Crude Transmission	HARRIS	0.31
2	MAGELLAN CRUDE OIL PL CO, L.P.	MAGELLAN PIPE LINE	24	CRUDE OIL	Crude Transmission	HARRIS	0.30
3	MAGELLAN CRUDE OIL PL CO, L.P.	BRIDGETEX SYSTEM	24	CRUDE OIL	Crude Transmission	HARRIS	0.30
4	MAGELLAN PIPELINE COMPANY, L.P.	MAGELLAN PIPELINE SYSTEM	20	REFINED LIQUID PRODUCT	Hazardous Liquid Products (Gas)	HARRIS	0.29
5	SHELL PIPELINE COMPANY LP	SINCO-COLEX PRODUCTS SYSTEM	12.75	REFINED LIQUID PRODUCT	Hazardous Liquid Products (Gas)	HARRIS	0.28
6	MAGELLAN PIPELINE COMPANY, L.P.	MAGELLAN PIPE LINE	12.75	REFINED LIQUID PRODUCT	Hazardous Liquid Products (Gas)	HARRIS	0.27
7	CENTERPOINT ENERGY INTRA P/L,LLC	833	6.63	NATURAL GAS	Gas Transmission	HARRIS	0.25

### Railroad (INF)

#	Railroad Company	Length(mi)
1	Union Pacific Railroad Company	1.44

### NPDES Facilities (HAZ)

#	Registry ID	Primary Name	Address	City	County
1	110005024302	JB HUNT TRANSPORT	350 GELLHORN DR	HOUSTON	HARRIS
2	110000461401	ANHEUSER-BUSCH HOUSTON BREWERY	775 GELLHORN DR	HOUSTON	HARRIS COUNTY
3	110070371415	GELLHORN DRIVE FROM IH-610 TO WALLISVILLE ROAD	PROJECT RUNS FROM INTERSECTION OF GELLHORN DR AT I	HOUSTON	HARRIS COUNTY
4	110035153295	STEWART AND STEVENSON HOUSTON I-10	8631 EAST FWY	HOUSTON	HARRIS

#	ZIP	Facility URL	Count
1	77013	<a href="https://ofmpub.epa.gov/frs_public2/fii_query_detail_disp_program_facility?p_registry_id=110005024302">https://ofmpub.epa.gov/frs_public2/fii_query_detail_disp_program_facility?p_registry_id=110005024302</a>	2
2	77029	<a href="https://ofmpub.epa.gov/frs_public2/fii_query_detail_disp_program_facility?p_registry_id=110000461401">https://ofmpub.epa.gov/frs_public2/fii_query_detail_disp_program_facility?p_registry_id=110000461401</a>	2
3	77013	<a href="https://ofmpub.epa.gov/frs_public2/fii_query_detail_disp_program_facility?p_registry_id=110070371415">https://ofmpub.epa.gov/frs_public2/fii_query_detail_disp_program_facility?p_registry_id=110070371415</a>	2
4	770291409	<a href="https://ofmpub.epa.gov/frs_public2/fii_query_detail_disp_program_facility?p_registry_id=110035153295">https://ofmpub.epa.gov/frs_public2/fii_query_detail_disp_program_facility?p_registry_id=110035153295</a>	2

### RCRA Sites (HAZ)

#	Registry ID	Primary Name	Address	City	County
1	110067267638	KROGER MAINTENANCE	680 GELLHORN DR	HOUSTON	HARRIS
2	110000461401	ANHEUSER-BUSCH HOUSTON BREWERY	775 GELLHORN DR	HOUSTON	HARRIS COUNTY
3	110000461394	AMERICAN NATIONAL CAN COMPANY	8501 EAST FREEWAY	HOUSTON	HARRIS
4	110022307831	PENSKE TRUCK LEASING HOUSTON GELLHORN	351 GELLHORN DRIVE	HOUSTON	HARRIS
5	110035153295	STEWART AND STEVENSON HOUSTON I-10	8631 EAST FWY	HOUSTON	HARRIS

#	ZIP	Facility URL	Count
1	77029-1404	<a href="https://ofmpub.epa.gov/frs_public2/fii_query_detail_disp_program_facility?p_registry_id=110067267638">https://ofmpub.epa.gov/frs_public2/fii_query_detail_disp_program_facility?p_registry_id=110067267638</a>	1
2	77029	<a href="https://ofmpub.epa.gov/frs_public2/fii_query_detail_disp_program_facility?p_registry_id=110000461401">https://ofmpub.epa.gov/frs_public2/fii_query_detail_disp_program_facility?p_registry_id=110000461401</a>	1
3	77029-1615	<a href="https://ofmpub.epa.gov/frs_public2/fii_query_detail_disp_program_facility?p_registry_id=110000461394">https://ofmpub.epa.gov/frs_public2/fii_query_detail_disp_program_facility?p_registry_id=110000461394</a>	1
4	77013-6101	<a href="https://ofmpub.epa.gov/frs_public2/fii_query_detail_disp_program_facility?p_registry_id=110022307831">https://ofmpub.epa.gov/frs_public2/fii_query_detail_disp_program_facility?p_registry_id=110022307831</a>	1
5	770291409	<a href="https://ofmpub.epa.gov/frs_public2/fii_query_detail_disp_program_facility?p_registry_id=110035153295">https://ofmpub.epa.gov/frs_public2/fii_query_detail_disp_program_facility?p_registry_id=110035153295</a>	1

### Underground Storage Tanks (HAZ)

#	RN	Facility ID	UST Type	Facility Name	Address
1	RN104591003	77306	FULLY REGULATED	PENSKE TRUCK LEASING HOUSTON GELLHORN	351 GELLHORN DR

#	City	State	ZIP	County	Count
1	HOUSTON	TX	77013	HARRIS	1

### Floodplains (WAT)

#	Category	Area(acres)
1	100YR	73.56
2	500YR	32.62
3	FLOODWAY	1.60

### Wetlands (WAT)

#	Wetland Type	Acres	Area(acres)
1	Riverine	15.501987824109612	2.71
2	Freshwater Emergent Wetland	0.5291023043921939	0.53

### Rare, Threatened, Endangered Species (ECO)

#	Name	TPWD Link	Area (Sq Miles)	Area(acres)
1	Harris	<a href="https://tpwd.texas.gov/gis/rtest/ES_Reports.aspx?countyname=Harris">https://tpwd.texas.gov/gis/rtest/ES_Reports.aspx?countyname=Harris</a>	1777.15	358.98

### Prime Farmlands (ECO)

#	Area Name	Farm Class	Area(acres)
1	Harris County, Texas	All areas are prime farmland	37.22

### Vulnerable Population (SOC)

#	Block Group	Area (Sq Miles)	County	Total Household Population	Total Population
1	482012124002	2.83	Harris	838	838
2	482012326001	1.46	Harris	1472	1472
3	482012125001	1.19	Harris	1320	1320

#	Households	Population in Poverty	Non-Hispanic Minorities	Hispanic Minorities	Limited English Proficiency
1	274	204	10	812	249
2	402	283	37	1236	210
3	415	634	372	925	316

#	Disable Family	Elderly	Car-less	Single Female Householder	Vulnerable Index	Area(acres)
1	141	62	27	69	89.6	233.63
2	110	88	12	47	47.4	64.06
3	113	37	9	43	68.4	61.29