



**HOUSTON
PUBLIC WORKS**

Transportation and
Drainage Operations

OATES ROAD (WALLISVILLE- BEAUMONT HWY) REHABILITATION PROJECT

TRANSPORTATION & DRAINAGE OPERATIONS

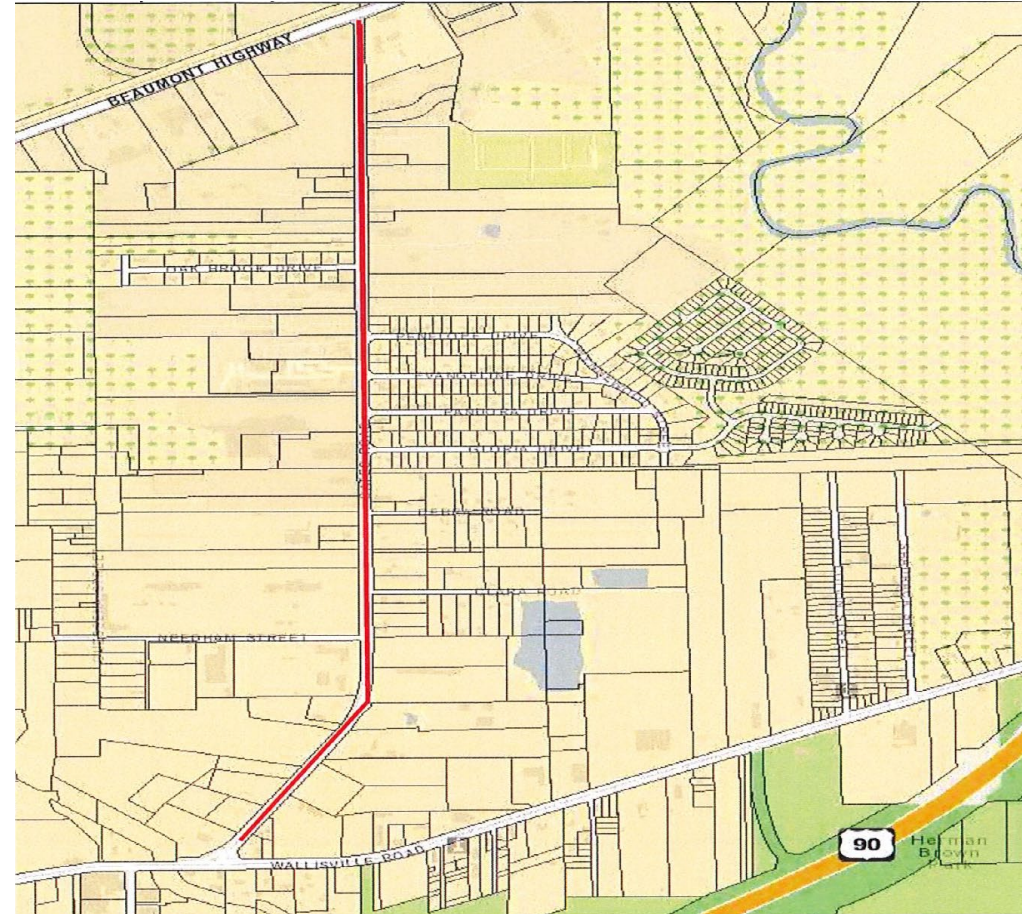


PROJECT DETAILS

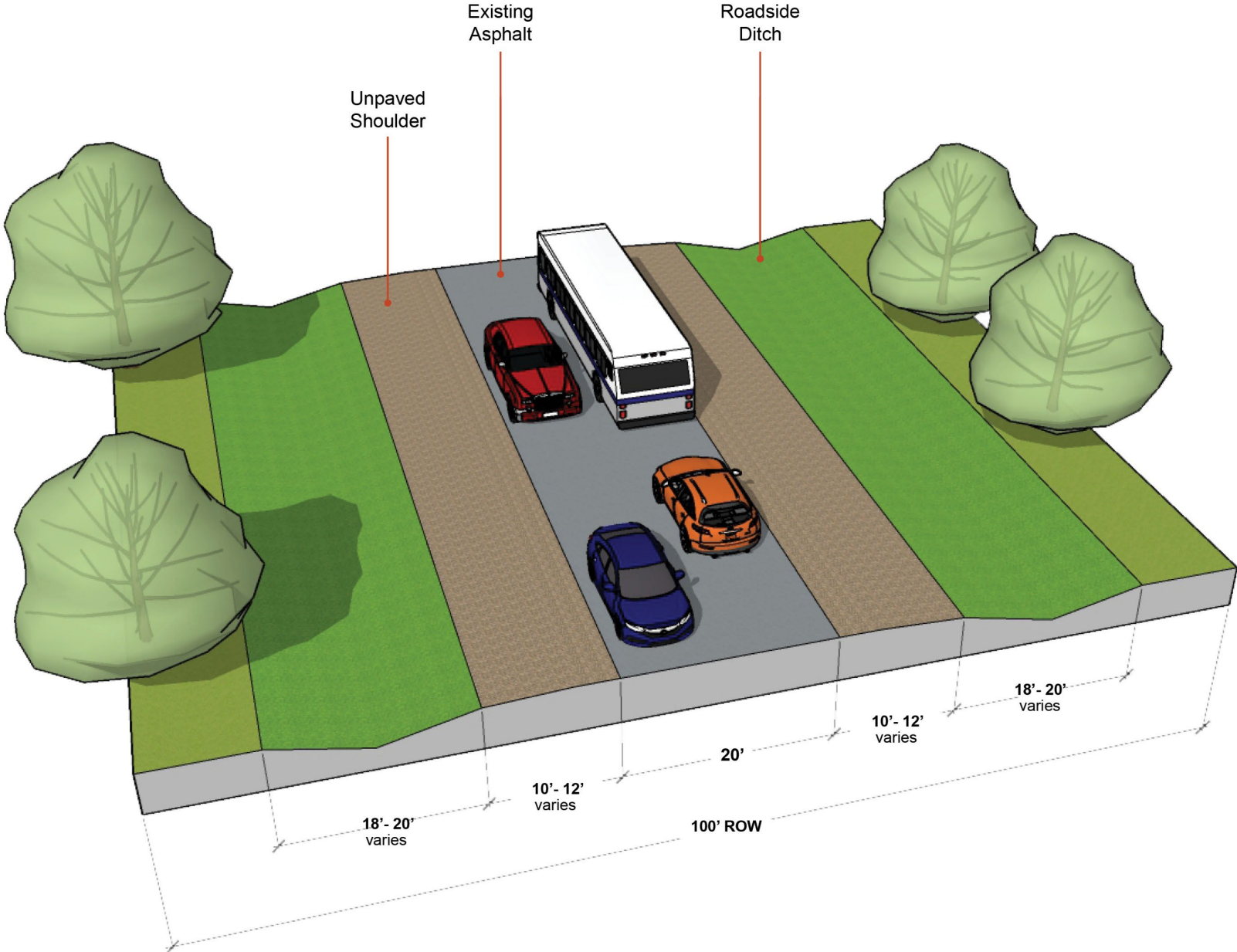
OATES ROAD
(WALLISVILLE-BEAUMONT HWY)

4.0 LANE MILES OF STREET

START DATE
WINTER 2021



Existing Conditions



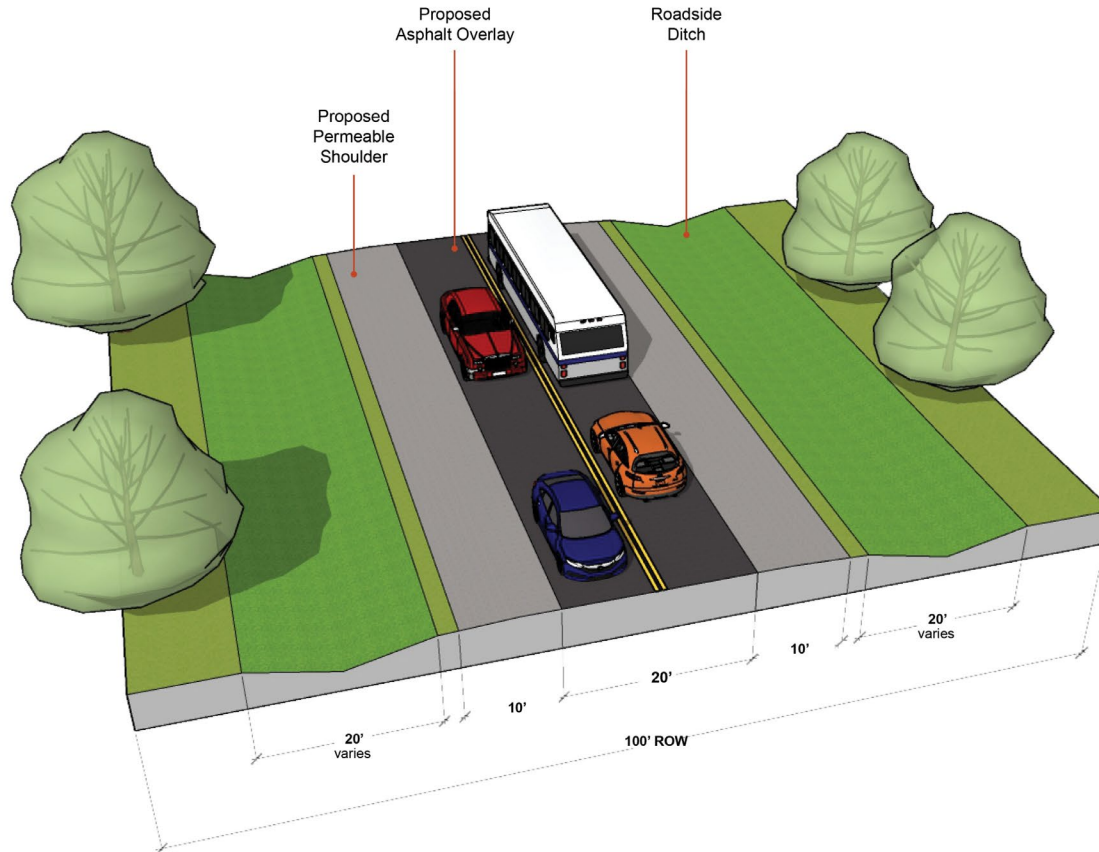
PROJECT IMPROVEMENTS

Base
Repairs

Paved
Shoulders

Mill &
Overlay

Proposed Conditions



CONSTRUCTION PROCESS

Mill Up the Existing Surface



Identify Base Repairs

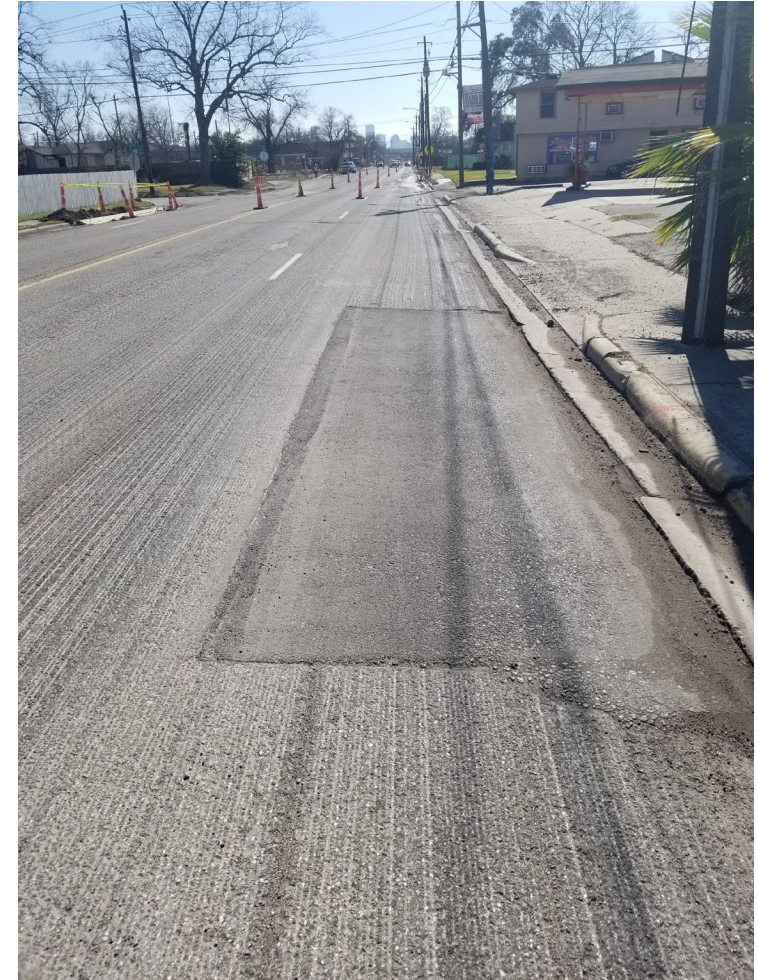


CONSTRUCTION PROCESS

Remove Sections of Base that Need Replacement



Replace the Base with New Material



CONSTRUCTION PROCESS

Placing New Surface

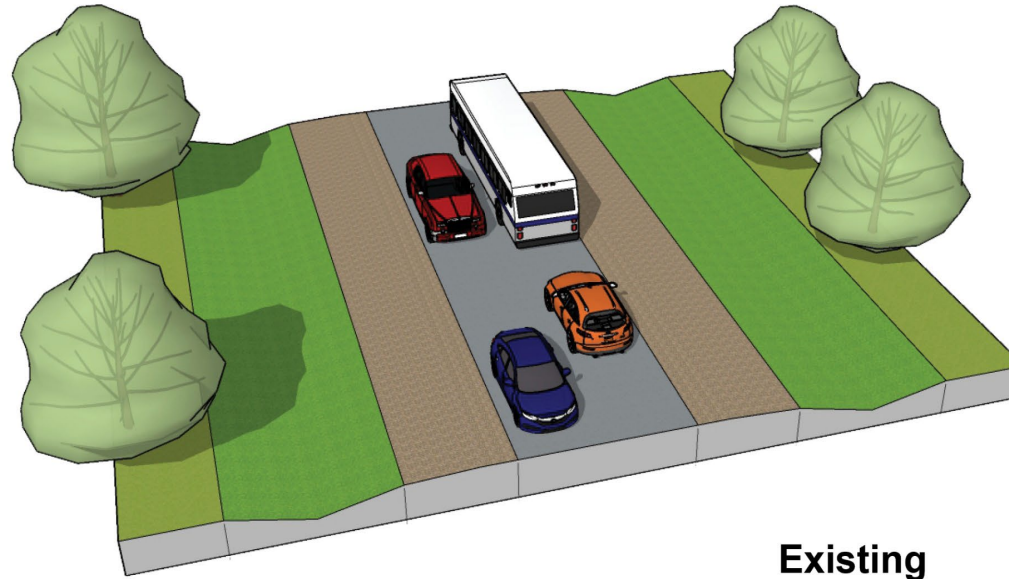


Completed Street Rehab

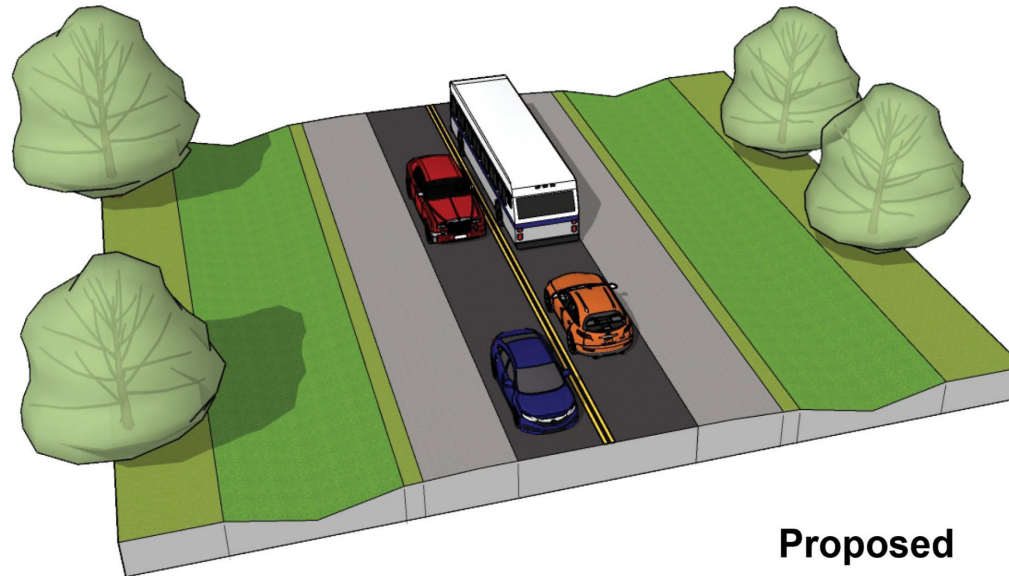


Comparison

- Right of Way remains the same at 100 feet
- Roadway surface (paved area) width remains the same at 10 feet per travel lane
- Unpaved shoulder to be replaced with a graded stone/limestone permeable shoulder
- Roadside ditches remain



Existing



Proposed

Safety is PRIORITY #1 for everyone involved in this project. For your safety and ours, please pay attention to the following...



HOW TO PREPARE



keep doorhanger & project team contact

When it is time for the contractor to start the work, they will be distributing doorhangers with pertinent contact information in case you have further questions or concerns. So keep your door hanger throughout the project.

WHO TO CONTACT



questions? call 311 (713.837.0311)

visit houstontx.gov/311 (N-321040-0030-4)



send photos, concerns or comments to

311@houstontx.gov

engagehouston.org

buildforward@houstontx.gov



Oates Road Design Concept Report

DCR – Oates Road

Purpose and Need:

The purpose of DCR is to identify long-term needs and develop solutions to address corridor deficiencies.



- » Long term solutions being evaluated include:
 - Total roadway reconstruction
 - *Concrete pavement*
 - *Paved shoulders*
 - *Capacity improvements*
 - Drainage and flooding improvements
 - Sidewalks and bike lanes
 - Safety enhancements
 - Intersection improvements
 - Access management
 - Upgraded signing, pavement markings, and traffic signals

PROJECT DEVELOPMENT PROCESS



Design Concept Report



Plans Specifications
Estimates



Construction



Acceptance By
The City

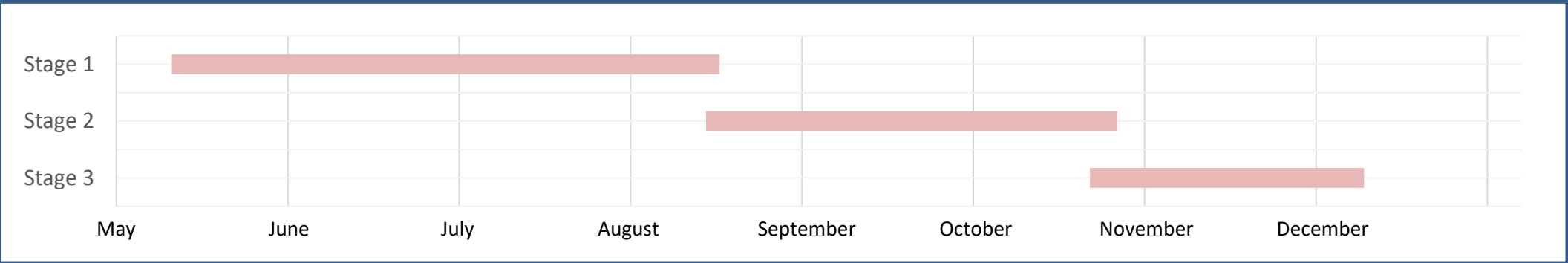


Maintenance &
Operations

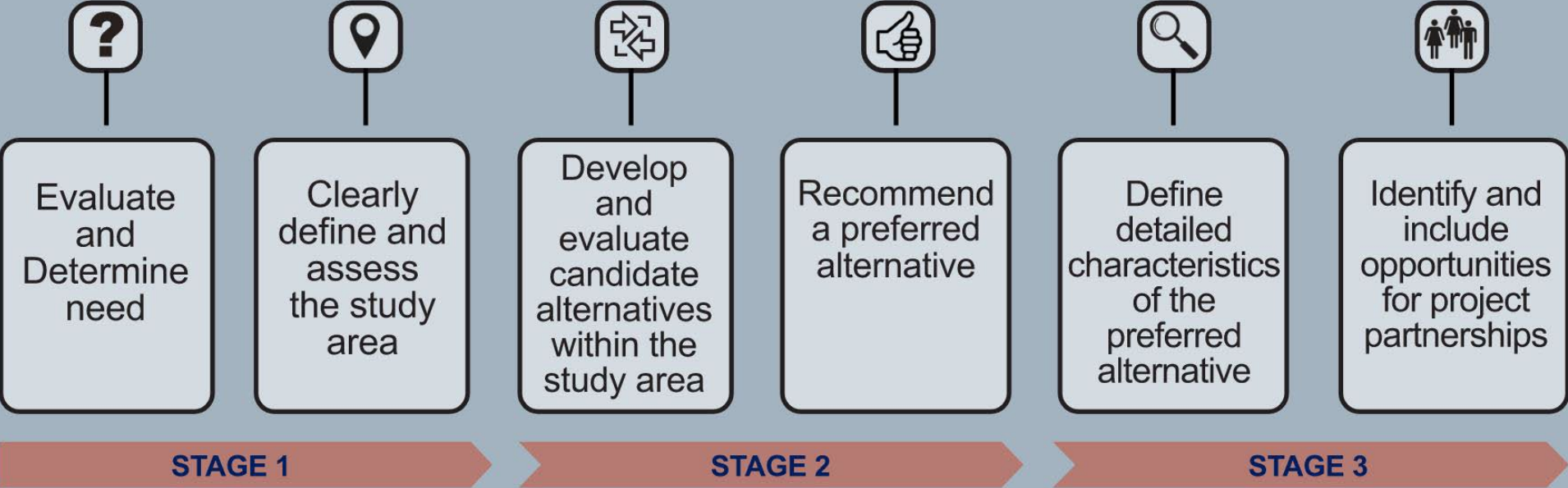


DESIGN CONCEPT REPORT

The Design Concept Report (DCR) is The First Stage of Project Development



Process



Identified Deficiencies

- » Poor pavement conditions
- » No visible striping/pavement markings
- » Unpaved shoulders of varying width
- » Existing storm sewer system may have areas with inadequate capacity
- » Limited pedestrian facilities
- » Some intersection movements operating at poor LOS

Potential Improvements

- » Roadway reconstruction
 - Widen to 24' (12-ft lanes)
 - 3-lane section w/ TWLTL
- » Paved shoulders
- » Curb and Gutter
- » Sidewalks
- » Intersection Improvements at Wallisville Rd and US 90

Questions?

